

DESCRIPTION

The Fail-Safe Terrapin provides exceptional aesthetics with remarkable strength. The wide variety of products allow an interior and exterior architectural theme throughout an entire facility. Cast, extra-heavy aluminum walls of the housings offer rugged durability and afford efficient heat dissipation. AccUVView UV-Guard coating protects the inside and outside of all UV stabilized polycarbonate lenses. The combination of narrow prismatic blondels on the interior and a prescription texture on the exterior of the lens provides exceptional lamp obscuration. Lifetime Warranty against breakage.

SPECIFICATION FEATURES

Housing

Precision cast aluminum housing. Extra-heavy thickness, minimum 0.125" thick, promotes durability and efficient heat dissipation through integral ballast heat sinks. Marine-grade, lowcopper alloy aluminum resists corrosion. All backplates are constructed of 16 gauge aluminum.

Finish

Injection-molded color is matte black standard or white painted. Border paint option is a premium baked on finish to maximize resistance to chipping and scratching. The VariColor option is available on all lenses and decorative faces. VariColor paint option allows perfect color matching to official organizational color (color chip requested for correct match).

Die-cast Housing Finish

Polyester-powder coat paint is applied in a five-stage process at 2.0-mil thickness and baked on at 400° F. The finish is TGIC, textured, thermoset, polyester powder coat.

Gasket

Die-cut closed cell silicone gasket seals lens to casting. Gasket is secured with adhesive and locked in place to the back casting. When the casting is not required the gasket is mechanically attached to the aluminum back plate. Terrapin requires only one gasket to seal the entire fixture.

Reflectors

Eyelid reflectors provide a shortforward throw optical pattern. Specular aluminum, internal, faceted reflectors provide 95% total reflectivity. All other decorative faces are provided with a white polyester powder coat reflector of 94% total reflectivity.

Lens

One-piece, injection-molded polycarbonate, 0.125" thick. In clear prismatic or opal, the lens is scientifically designed to obscure lamp image while maintaining efficiency. The state-of-the art design consists of an internal prism designed to spread the light evenly, in combination with the texture prescription on the exterior of the lens. This new design concept substantially reduces glare. Attached with 4 recessed T20 stainless-steel TORX®-head fasteners. All lenses are provided with AccUVView UV-Guard coating on the interior and exterior surfaces of the lens. The AccUVView coating guards against the treacherous rays of the sun and the UV radiation from lamp sources.

Decorative Faces

Faceplate designs consist of highimpact, injection molded, 0.125 minimum thickness, polycarbonate overlay attached to lens with two recessed T20 stainless steel TORX®-head fasteners. Provide true 360° backlit halo effect. Custom faces available, consult

Catalog #		Type
Project		
Comments		Date
Prepared by		

customer service for maximum wattage availability. Eyelid offers optimal lamp shielding and optical distribution. Open face is clear or opal lens only for continuous radial light pattern. The Border face utilizes the standard open lens with premium paint process, eliminates backlit halo effect.

Lamps

By others.

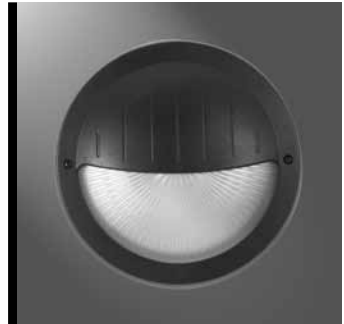
Sockets/Ballasts

HID sockets are porcelain, medium base sockets with a nickel-plated brass screw shell. HID ballasts are standard HPF, with minimum starting temperatures of -40°C (-40°F) for HPS and -30°C (-20°F) for MH. Compact fluorescent sockets are polycarbonate and incorporate: 26-watt GX24q3; 32-watt GX24q3; 42-watt GX24q4; 57-watt GX24q5; or 70-watt GX24q6 base with a 2-pin reject that ensures proper lamping. Compact fluorescent ballasts are electronic, universal voltage 120-277V, less than 10% harmonic distortion, with minimum starting temperature of -17°C (0°F).

Labels

UL/cUL listed for wet locations. High pressure hose down rated for 200 PSI. HID and incandescent units to mount on non-combustible surface only. Fluorescent units mount on combustible surfaces or non-combustible surfaces.

TORX® is a registered trademark of Camcar Division of Textron Inc.



TR 15

15" Round
Harmony Terrapin
Compact Fluorescent
High Pressure Sodium
Metal Halide
Incandescent
Vandal Resistant



HARMONY™
Vandal Resistant

ENERGY DATA

Input Watts:

Electronic

- (2) 26W CFL 54.0 Watts
- (2) 32W CFL 74.0 Watts
- (2) 42W CFL 94.0 Watts
- (2) 57W CFL 118.0 Watts
- (2) 70W CFL 146.0 Watts

High Power Factor

- (1) 50W HPS 60.0 Watts
- (1) 70W HPS 95.0 Watts
- (1) 100W HPS 130.0 Watts
- (1) 150W HPS 190.0 Watts
- (1) 50W MH 69.0 Watts
- (1) 70W MH 94.0 Watts
- (1) 100W MH 125.0 Watts
- (1) 175W MH 210.0 Watts

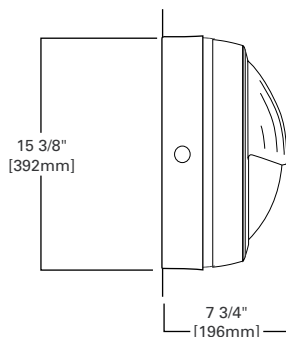
For Energy Management related technical data to support the performance of this fixture series, refer to the ordering information for input wattage.

ADC050508
2013-01-03 16:16:13



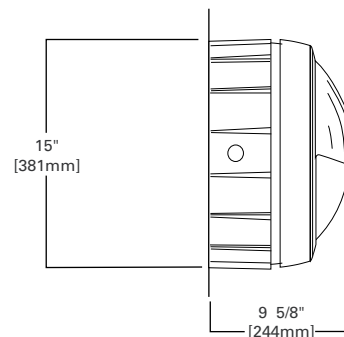
FLAT

(Compact Fluorescent Units
except 2-42 CT - no EM)



SHALLOW CASTING

(Units with CSTG option, EM,
2-42 CT lamps)



DEEP CASTING

(HID Units)

ORDERING INFORMATION

SAMPLE NUMBER: TRE15-C-232CT-DT-BK-L

Product T = Terrapin	Lamp Qty / Type Compact Fluorescent 1 or 2/26CT ² 1 or 2/32CT ² 1 or 2/42CT ⁴ 1 or 2/57CT ⁴ HID 1/50MH 1/70MH 1/100MH 1/150MH ¹ 1/70HPS 1/100HPS 1/150HPS Incandescent 1 or 2/75IN 1/150IN	Voltage Compact Fluorescent DT = Universal 120-277V 347 = 347V HID DT = Dual-tap 120/277V Ballast ³ (Wired 277V) 120V = 120V Ballast 240V = 240V Ballast 277V = 277V Ballast 347V = 347V Ballast 480V = 480V Ballast MT = Multi-tap 120, ³ 208, 240, 277V (Wired 277V) Incandescent 120V = 120V	Color BK = Black WH = White BRZ = Bronze	Options EM=Emergency Battery Pack ⁴ (Fluorescent only) F1 = Single Fuse, 120, 277, or ⁸ 347V (with HID specify single voltage only) F2=Double Fuse, 208, 240, or ⁸ 480V (with HID specify single voltage only) L= With lamp ⁶ Q= Quartz restrike ⁷ QS= Quartz socket ⁷ REG= Regress (100W max) Specify "REG-CP" or "REG-BB" (See previous for details.) CSTG= Shallow casting (Same as SCB15, but ships with fixture) ⁴	Accessories (order separately) VRSD =T20 Center-pin tamperproof TORX®-head bit SCB15= Surface conduit box, 15", shallow, with drilled/tapped plugs
Shape R = Round					
Style B = Border Paint S = Single Band E = Eyelid F = Four Quadrant O = Open Face R = Ring					
Size 15 = 15"					
Lens C = Clear prismatic O = Opal					

Notes:

Products also available in non-US voltages and 50Hz for international markets. Ceiling mount HID units to be mounted on non-combustible material only.

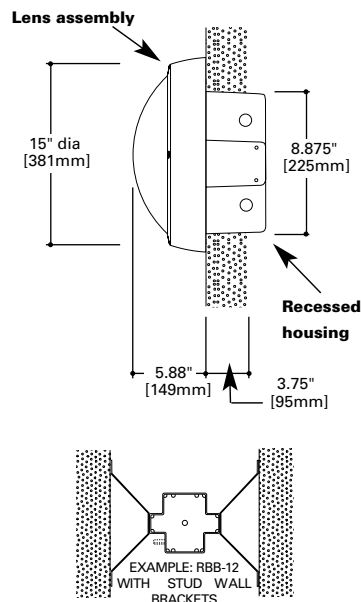
- Ceiling mount only.
- Ceiling mount two (2) 26CT & two (2) 32CT versions require CSTG Option, (e.g. TRO15-C-226CT-DT-BK-CSTG). Wall mount does not require shallow casting - can be mounted flat to the wall.
- Available wired to voltages other than 277V, add desired voltage before MT or DT, (i.e. 120V/MT).
- 2-42CT, 1 or 2-57CT and EM (regardless of lamp type/quantity) supplied standard with shallow casting (CSTG). EM not available with 57W lamps.
- Wall mount only.
- Standard with MH fixtures 150W and below.
- Not available with CFL.
- Fixtures with F1 or F2 option ship with shallow casting.

TORX ® is a registered trademark of Camcar Division of Textron Inc.

RECESSED HOUSING MOUNTING (AVAILABLE IN FLUORESCENT, INCANDESCENT AND HID; 100W MAX)

RECESSED SAMPLE NUMBER:

SHIP FIXTURE COMPLETE (1 LINE ITEM)	1. TRE-15-C-232CT-BK-REG-BB ↑ * Specify BB for combustible material application * Specify CP for brick or concrete pour
SHIP BACK BOX IN ADVANCE OF FIXTURE (2 LINE ITEMS)	1. TRE-15-C-LH-232CT-BK-REG-BB ↑ Less Recessed Housing 2. RBB-12-F ↓ <div> The following recessed housings may be ordered in advance : RBB-12-F=For Combustible (Studwall) Applications - Fluorescent Fixtures Only RBB-12=For Combustible (Studwall) Applications - HID and Incandescent Fixtures Only RCP-12=For Non-Combustible (Brick, Concrete-Pour) Applications - HID, Fluorescent, and Incandescent Fixtures </div>

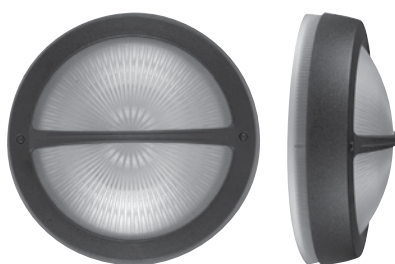
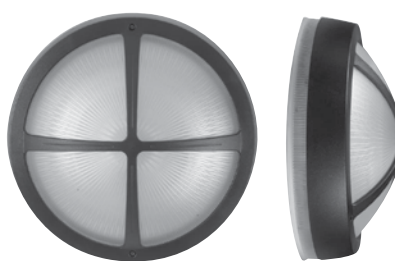


Lifetime Warranty

Fail-Safe will repair or provide a replacement fixture for any VR architectural luminaire found to be inoperative due to physical abuse for the duration of the installation. ** This includes all VR polycarbonate lens luminaires. This warranty is only valid to proper installation of the luminaire, using the four-point mounting method for all luminaires. Furthermore, Fail-Safe cannot warranty product against some forms of anti-social human behavior involving corrosive chemicals, fire, paint or gunfire.

** To make a claim, contact your Cooper Lighting Agent to arrange an RMA (Return Material Authorization) for the claimed product. Upon receipt and verification of the defect, Cooper Lighting will return to you a repaired or, at Cooper Lighting's sole option, replacement fixture.

DESIGN GALLERY

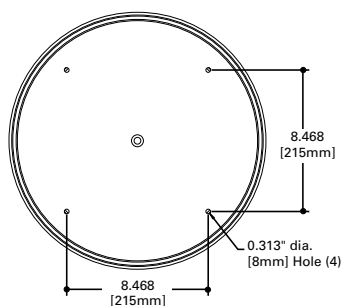
**Eyelid****Single Band****Border****Ring****Four Quadrant****Open**

Lens Options: Clear prismatic or Opal

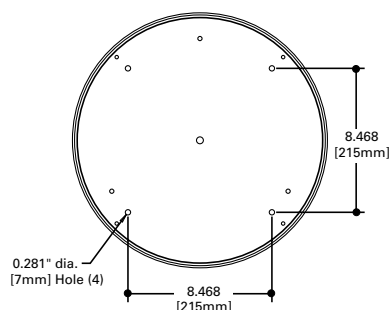
MOUNTING

FLAT

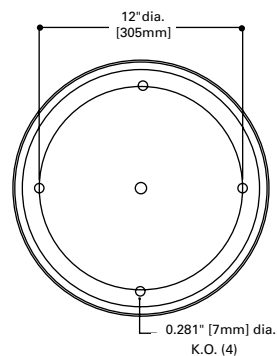
CT Units

**SHALLOW CASTING**

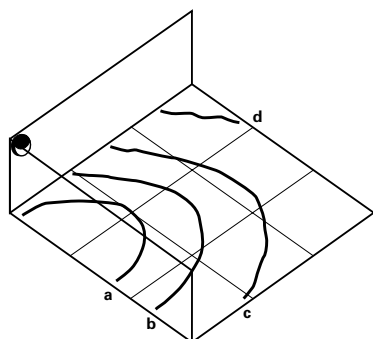
CSTG Option, EM Option,
SCB15 Accessory

**DEEP CASTING**

HID Units, QL



PHOTOMETRICS

Candlepower Distribution**Footcandle Multipliers**

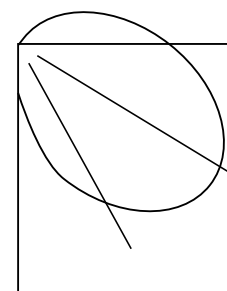
For other than 8' mounting heights use
appropriate multiplier value:

6'	8'	10'	12'	14'
x1.7	x1.0	x0.64	x0.44	x0.32

Information

	a	b	c	d
TRE15-C-226CT-DT-BK	2.0	1.0	.50	.25
BA # 10850				

All grid lines in units of mounting heights

**(2) 26W Eyelid**

(2) 26W Compact Fluorescent
TRE15-C-226CT-DT-BK
BA # 10850
8' Mounting Height