

DESCRIPTION

The FWE combines vandalproof features with commercial aesthetics to offer owners an unbreakable solution to the problem of broken fixtures in unsupervised areas like employee locker rooms or service station washrooms. The FWE is specifically designed for use in public access areas where vandalism may occur and for areas that must maintain a clean, well-lighted appearance. Ideal for schools, dormitories, hallways, locker rooms, shower facilities, and restrooms.

Catalog #		Type
Project		
Comments		Date
Prepared by		

SPECIFICATION FEATURES

Fasteners

Captive, stainless steel tamperproof, T20 TORX®-head screws prevent unauthorized access.

Housing

Die-formed 16 ga. CRS with welded and ground ends and internal weld bands for added strength.

Finish

High gloss, electrostatically applied, white powder coat finish, average minimum reflectance 92%. 1000 hour salt spray test.

Lens

One-piece, injection-molded, UV stabilized polycarbonate, min. 0.156" thick.

Lamps

By others.

Lens Retention

Double-wall lens channel captivates lens to prevent unauthorized fixture penetration.

Ballast

Electronic Class P, CBM/ETL ballast.

Labels

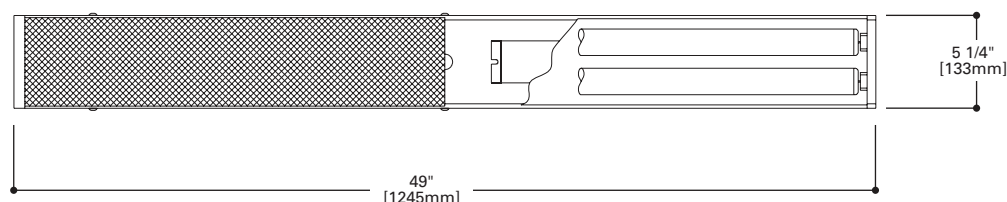
UL/cUL listed for damp locations. Wet location under covered ceiling optional.



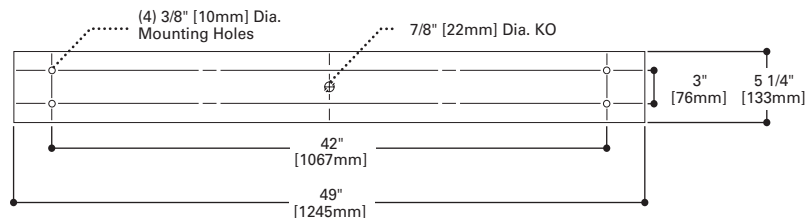
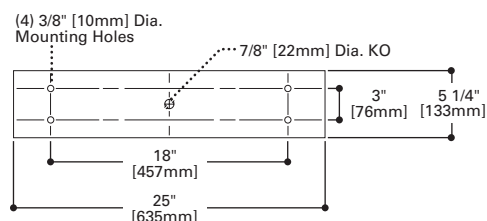
FWE

T5
T8
Fluorescent
Vandal Resistant

CEILING MOUNT
1 & 2 Lamps

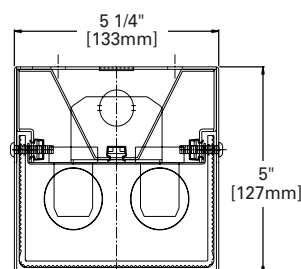


MOUNTING DIMENSIONS



Consult factory for 8' length mounting details.

CROSS-SECTION VIEW DIMENSIONS



RATINGS

UL/cUL listed
Damp Location
Wet location (Optional)

TORX® is a registered trademark of Camcar Division of Textron Inc.

ORDERING INFORMATION

SAMPLE NUMBER: FWE-228-UNV-EB51-FNL

Product Family	Lamp Type	Voltage ²	Ballast ²	Options	Accessories (order separately)
FWE					
FWE =High Abuse Ceiling Mount Luminaire 8TFWE =High Abuse Ceiling Mount 8' Length	2' Fixture ^{4, 5} T5 Fluorescent 114 =(1) 14W Lamp 214 =(2) 14W Lamps 124 =(1) 24W Lamp 224 =(2) 24W Lamps	120 =120V 277 =277V 347 =347V UNV =120V-277V	Electronic Ballast ¹ EB81 =(1) Ballast for use with T8 Lamp EB82 =(2) Ballasts for use with T8 Lamp EBX1 =(1) Ballast for use with Biaxial Lamp EBX2 =(2) Ballasts for use with Biaxial Lamp EB51 =(1) Ballast for use with T5 Lamp EB52 =(2) Ballasts for use with T5 Lamp EB83 =(3) Ballast for use with T8 Lamp ³ EB84 =(4) Ballasts for use with T8 Lamp ³ EB53 =(3) Ballast for use with T5 Lamp ³ EB54 =(4) Ballasts for use with T5 Lamp ³	EL4 =EM Pack, T8, Biax EL5 =EM Pack, T5, T5HO FNL =Fluorescent Night Light (5, 7, 9W) GCO =Grounded Convenience Outlet GLR =Fuse and Holder OPL =Opal Diffuser WL = Wet Location (covered ceiling only)	VRSD =TORX®-Head Vandal- Resistant Screwdriver
T8 Fluorescent 117 =(1) 17W Lamp 217 =(2) 17W Lamps Biaxial Fluorescent 140BX =(1) 40W Biaxial Lamp 240BX =(2) 40W Biaxial Lamps 3' Fixture T5 Fluorescent 121 =(1) 21W T5 Lamp 139 =(1) 39W T5HO Lamp 221 =(2) 21W T5HO Lamps 239 =(2) 39W T5 Lamps T8 Fluorescent 125 =(1) 25W T8 Lamp 225 =(2) 25W T8 Lamps 4' Fixture T8 Fluorescent 132 =(1) 32W Lamp 232 =(2) 32W Lamps	4' Fixture T5 Fluorescent 128 =(1) 28W Lamp 228 =(2) 28W Lamps 154 =(1) 54W T5HO Lamp 254 =(2) 54W T5HO Lamps 8' Fixture (8T FWE) 128 =(1) 28WT5 Lamp 228 =(2) 28WT5 Lamps 154 =(1) 54W T5HO Lamp 254 =(2) 54W T5HO Lamps 132 =(1) 32W T8 Lamp 232 =(2) 32W T8 Lamps				

Notes:
¹ For specific electronic ballast, specify brand and catalog number.
² Products also available in non-US voltages and 50Hz for international markets. Consult your Cooper Lighting Representative for availability and ordering information.
³ 3 and 4 ballasts available in 8' fixture only.
⁴ 2' unit not available with EM Pack.
⁵ 2' unit not available with (2) T5 or T5HO ballasts.