

# GPCS – Patient Control Station

Catalog#	Prepared by
Project	Date
Comments	Type

## Overview

The Greengate Patient Control Station provides the hospital patient or nursing home resident easy control over their lighting controls and shades, with the added security of a standard connection to the Nurse Call system and the comfort of a universal TV controller. The patient control station provides large, clearly labeled buttons in a fully sealed case

## Features

- Provides patients access to control natural and electric lighting from the bed
- Incorporates lighting and shade control buttons with Nurse Call, TV and other features
- Reduces nuisance calls to the nursing staff by providing patient control of in room lighting and shades
- Proprietary sealed design reduces potential risk of infectious fluids or solids settling into the unit, even in the speaker area
- Durable, lightweight universal handheld control with comfort grip case
- Large button layout
- 37 pin connection standard
- Designed to withstand over 100 drops onto a concrete floor without impacting functionality
- RoHS compliant



\*Model GPCS-3Z-DIM shown

## Specifications

<b>Size</b>	8.375"H x 3.5"W x 1.5"D
<b>Housing</b>	Durable injection-molded ABS plastic complies with UL 94V-0
<b>Switch Rating</b>	30 VDC, 500mA or less
<b>Switch Type</b>	SPDT, Momentary contact
<b>Tested With the Following Nurse Call Stations</b>	GE Telligence™
	Hill-Rom NaviCare®
	Rauland Responder® IV
	Rauland Responder® 5
<b>Standards</b>	West-Com Novus®
	UL 1069 Listed

## Description/Operation

The Greengate Patient Control Station provides the hospital patient or nursing home resident easy control over their lighting controls and shades, with the added security of a standard connection to the Nurse Call system and the comfort of a universal TV controller. The patient control station provides large, clearly labeled buttons in a fully sealed case.

## Installation

This system accessory will require mounting and wiring at the site. The patient control station then plugs into this receptacle, connecting it to the nurse call system and the healthcare television.

## Configuration

GPCS-3Z



GPCS-3Z-DIM



GPCS-2Z



GPCS-2Z-DIM



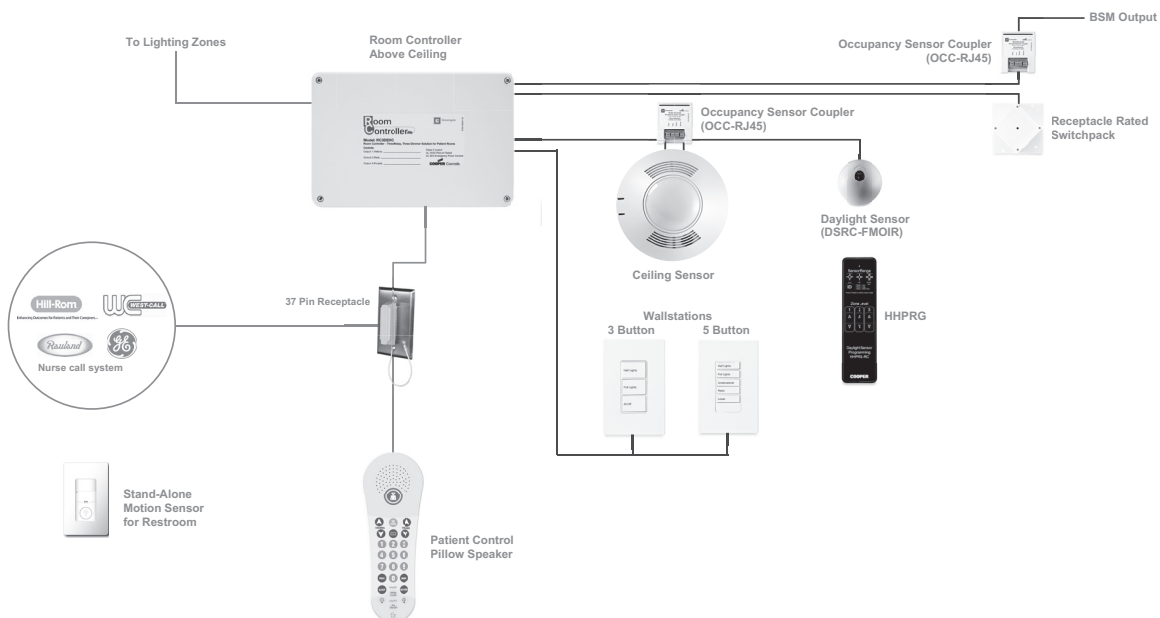
GPCS-2Z-SHD



GPCS-2Z-SHD-DIM



## Sample One-Line



## Ordering

This is an accessory for the Greengate Room Controller (RC3DEHC) and ControlKeeper 4A lighting control panels. There is no factory assembly needed.

Catalog #	Description
GPCS-3Z	Patient Control Station, 3 Zones, All On/All Off button
GPCS-3Z-DIM	Patient Control Station, 3 Zones, All On/All Off button, Dim raise/lower buttons
GPCS-2Z	Patient Control Station, 2 Zones, All On/All Off button
GPCS-2Z-DIM	Patient Control Station, 2 Zones, All On/All Off button, Dim raise/lower buttons
GPCS-2Z-SHD	Patient Control Station, 2 Zones, All On/All Off button, Shade raise/lower button
GPCS-2Z-SHD-DIM	Patient Control Station, 2 Zones, All On/All Off button, Shade raise/lower button, and Dim raise/lower buttons

### Eaton

1000 Eaton Boulevard  
Cleveland, OH 44122  
United States  
Eaton.com

Eaton's Cooper Controls Business  
203 Cooper Circle  
Peachtree City, GA 30269  
coopercontrol.com

© 2014 Eaton  
All Rights Reserved  
Printed in USA  
Publication No. ACC131703  
September 23, 2014

Eaton is a registered trademark.

All other trademarks are property  
of their respective owners.