

## DESCRIPTION

The Fail-Safe Terrapin provides exceptional aesthetics with remarkable strength. The wide variety of products allow an interior and exterior architectural theme throughout an entire facility. Cast, extra-heavy aluminum walls of the housings offer rugged durability and afford efficient heat dissipation. AccUView UV-Guard coating protects the inside and outside of all UV stabilized polycarbonate lenses. The combination of narrow prismatic blondels on the interior and a prescription texture on the exterior of the lens provides exceptional lamp obscuration. Lifetime Warranty against breakage.

## SPECIFICATION FEATURES

### Housing

Precision cast aluminum housing. Extra-heavy thickness, minimum 0.125" thick, promotes durability and efficient heat dissipation through integral ballast heat sinks. Marine-grade, low copper alloy aluminum resists corrosion. All backplates are constructed of 16 gauge aluminum.

### Finish

Injection-molded color is matte black standard or white painted. Border paint option is a premium baked on finish to maximize resistance to chipping and scratching. The VariColor option is available on all lenses and decorative faces. VariColor paint option allows perfect color matching to official organizational color (color chip requested for correct match).

### Die-cast Housing Finish

Polyester-powder coat paint is applied in a five-stage process at 2.0-mil thickness and baked on at 400° F. The finish is TGIC, textured, thermoset, polyester powder coat.

### Gasket

Die-cut closed cell silicone gasket seals lens to casting. Gasket is secured with adhesive and locked in place to the back casting. When the casting is not required the gasket is mechanically attached to the aluminum back plate. Terrapin requires only one gasket to seal the entire fixture.

### Reflectors

Eyelid reflectors provide a shortforward throw optical pattern. Specular aluminum, internal, faceted reflectors provide 95% total reflectivity. All other decorative faces are provided with a white polyester powder coat reflector of 94% total reflectivity.

### Lens

One-piece, injection-molded polycarbonate, 0.125" thick. In clear prismatic or opal, the lens is scientifically designed to obscure lamp image while maintaining efficiency. The state-of-the art design consists of an internal prism designed to spread the light evenly, in combination with the texture prescription on the exterior of the lens. This new design concept substantially reduces glare. Attached with 4 recessed T20 stainless-steel TORX®-head fasteners. All lenses are provided with AccUView UV-Guard coating on the interior and exterior surfaces of the lens. The AccUView coating guards against the treacherous rays of the sun and the UV radiation from lamp sources.

### Decorative Faces

Faceplate designs consist of highimpact, injection molded, 0.125 minimum thickness, polycarbonate overlay attached to lens with two recessed T20 stainless steel TORX®-head fasteners. Provide true 360° backlit halo effect. Custom faces available, consult

Catalog #		Type
Project		
Comments		Date
Prepared by		

customer service for maximum wattage availability. Eyelid offers optimal lamp shielding and optical distribution. Open face is clear or opal lens only for continuous radial light pattern. The Border face utilizes the standard open lens with premium paint process, eliminates backlit halo effect.

### Lamps

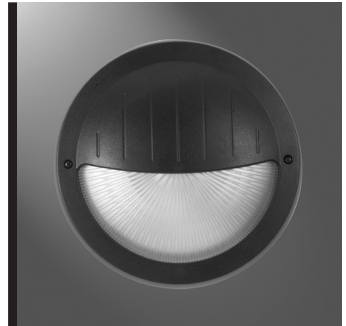
By others.

### Sockets/Ballasts

Compact fluorescent sockets are polycarbonate and incorporate: 26-watt GX24q3; 32-watt GX24q3; 42-watt GX24q4; 57-watt GX24q5; or 70-watt GX24q6 base with a 2-pin reject that ensures proper lamping. Compact fluorescent ballasts are electronic, universal voltage 120-277V, less than 10% harmonic distortion, with minimum starting temperature of -17°C (0°F).

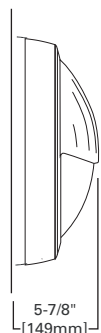
### Labels

UL/cUL listed for wet locations. High pressure hose down rated for 200 PSI. Incandescent units to mount on non-combustible surface only. Fluorescent units mount on combustible surfaces or non-combustible surfaces.



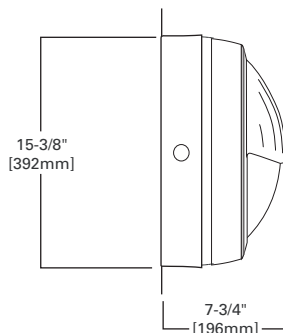
## TR 15

15" Round  
Terrapin  
Compact Fluorescent  
Incandescent  
Vandal Resistant



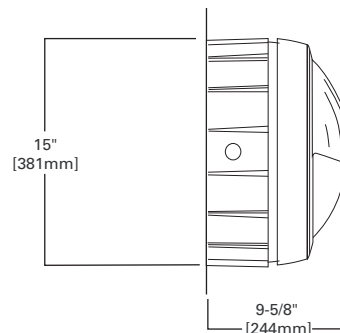
### FLAT

(Compact Fluorescent Units except 2-42 CT - no EM)



### SHALLOW CASTING

(Units with CSTG option, EM, 2-42 CT lamps)



### DEEP CASTING

(Units with DPTG Option)

## ORDERING INFORMATION

SAMPLE NUMBER: TRE15-C-232CT-DT-BK-L

<b>Product</b> <b>T</b> = Terrapin	<b>Lamp Qty / Type</b> <b>Compact Fluorescent</b> <b>1 or 2/26CT</b> <sup>1</sup> <b>1 or 2/32CT</b> <sup>1</sup> <b>1 or 2/42CT</b> <sup>2</sup> <b>1 or 2/57CT</b> <sup>2</sup>  <b>Incandescent</b> <b>1 or 2/75IN</b> <b>1/150IN</b>	<b>Voltage</b> <b>Compact Fluorescent</b> <b>DT</b> = Universal (120V-277V) <b>347</b> = 347V  <b>Incandescent</b> <b>120V</b> = 120V	<b>Color</b> <b>BK</b> = Black <b>WH</b> = White <b>BRZ</b> = Bronze	<b>Options</b> <b>EM</b> =Emergency Battery Pack <sup>2</sup> (Fluorescent only) <b>F1</b> = Single Fuse, 120, 277, or 347V <b>L</b> = With lamp <b>CSTG</b> = Shallow casting (Same as <sup>2</sup> SCB15, but ships with fixture) <b>DPTG</b> = Deep casting	<b>Accessories</b> (order separately) <b>VRSD</b> =T20 Center-pin tamperproof TORX®-head bit  <b>SCB15</b> = Surface conduit box, 15", Shallow, with drilled/tapped plugs <b>SCBD15</b> = Surface conduit box,15", Deep, with drilled/tapped plugs
<b>Shape</b> <b>R</b> = Round					
<b>Style</b> <b>B</b> = Border Paint <b>E</b> = Eyelid <b>F</b> = Four Quadrant <b>O</b> = Open Face <b>R</b> = Ring					
<b>Size</b> <b>15</b> = 15"					
<b>Lens</b> <b>C</b> = Clear prismatic <b>O</b> = Opal					

## Notes:

Products also available in non-US voltages and 50Hz for international markets.

- <sup>1</sup> Ceiling mount two (2) 26CT & two (2) 32CT versions require CSTG Option, (e.g. TR015-C-226CT-DT-BK-CSTG). Wall mount does not require shallow casting - can be mounted flat to the wall.
- <sup>2</sup> 2-42CT, 1 or 2-57CT and EM (regardless of lamp type/quantity) supplied standard with shallow casting (CSTG). EM not available with 57W lamps.

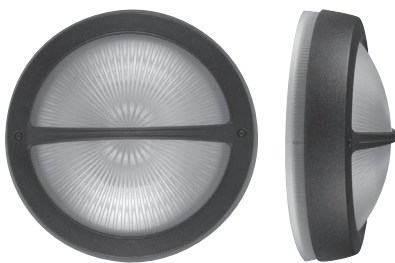
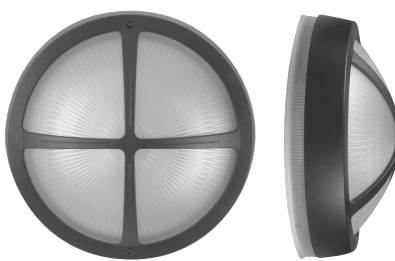
TORX<sup>®</sup> is a registered trademark of Camcar Division of Textron Inc.

## Lifetime Warranty

Fail-Safe will repair or provide a replacement fixture for any VR architectural luminaire found to be inoperatiave due to physical abuse for the duration of the installation. \*\* This includes all VR polycarbonate lens luminaires. This warranty is only valid to proper installation of the luminaire, using the four-point mounting method for all luminaires. Furthermore, Fail-Safe cannot warranty product against some forms of anti-social human behavior involving corrosive chemicals, fire, paint or gunfire.

\*\* To make a claim, contact your Cooper Lighting Agent to arrange an RMA (Return Material Authorization) for the claimed product. Upon receipt and verification of the defect, Cooper Lighting will return to you a repaired or, at Cooper Lighting's sole option, replacement fixture.

## DESIGN GALLERY

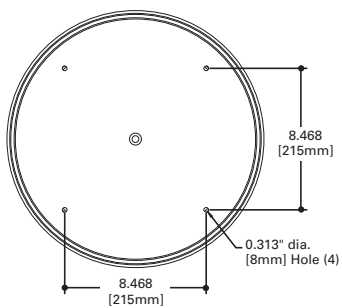
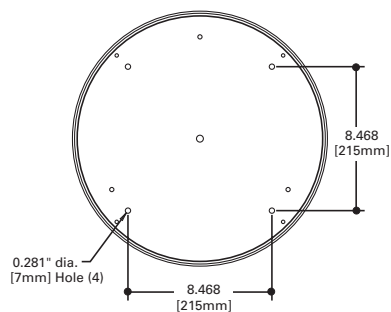
**Eyelid****Single Band****Border****Ring****Four Quadrant****Open**

**Lens Options:** Clear prismatic or Opal

## MOUNTING

**FLAT**

CT Units

**SHALLOW CASTING**CSTG Option, EM Option,  
SCB15 Accessory**DEEP CASTING**