

## DESCRIPTION

The UCL and UCLV provide effective LED task lighting in most any demanding environment. Heavy gauge cold rolled steel, finished with powder coat white paint, encloses and protects the linear LED module. Stainless steel brushed or painted is available for extreme environments. The LED module is available in color temperatures from 3000K to 5000K. UCL and UCLV are available in acrylic or polycarbonate lenses. Available in 1' to 4' lengths, in 1' increments.

## SPECIFICATION FEATURES

### Housing/Cover

**UCL** - 20 gauge cold-rolled steel housing. K.O. on back and each end. Keyhole slots for mounting.

**UCLV** - 20 gauge cold-rolled steel housing with keyhole slots for mounting. K.O. on back and ends for power. Seam-welded cover fits over housing (lens between housing cover). Four counter-sunk holes allow counter-sunk screws to attach cover to housing.

### Finish

Gloss white polyester powder coat standard. Optional matte white anti-microbial powder coat white paint available. Stainless steel brushed or stainless steel painted powder coat white optional.

### Fasteners

UCLV incorporates (4) stainless steel counter-sunk tamper proof TORX® T-20 screws which secure housing to back pan. Philips-head screws available.

### Lens

Opal acrylic, Pattern 12 acrylic, KSH25, polycarbonate Pattern 12, 0.125", 0.156" or 0.187" thick.

### Electrical / LEDs

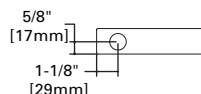
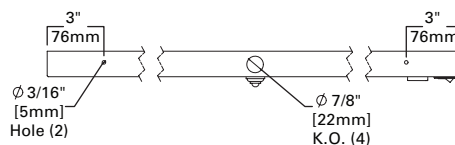
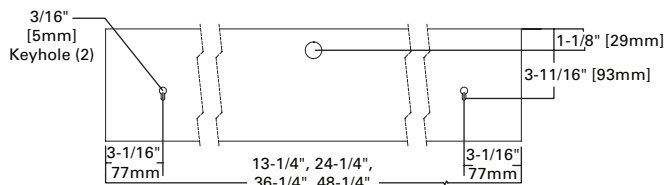
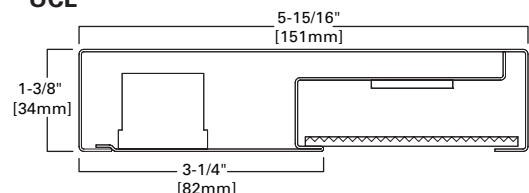
LED's are available in 3000K, 3500K, 4000K or 5000K with 85 CRI. 90 CRI available. Nominal 750 lumens per linear foot. Replaceable LED / driver assembly. Life is 50,000 hours at 70% lumen output. Electronic drivers standard for 120-277V applications. 120V or 277V standard for 1' and 2' fixtures. Optional 0-10V dimming driver for 3' and 4' fixtures.

### Labels

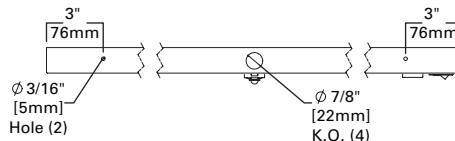
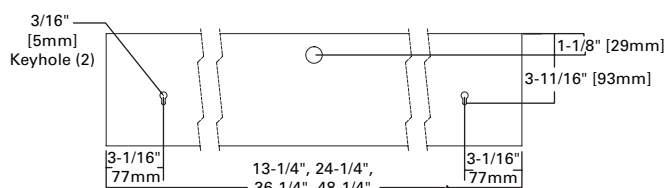
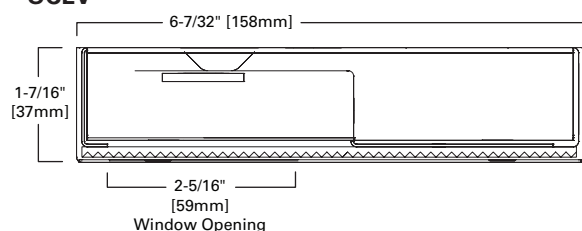
UL/cUL listed for damp locations. UCLV optional IP63 rated.

## DIMENSIONS

### UCL



### UCLV



UCL



UCLV

## UCL UCLV

LD4 LED  
Undercabinet

Commercial  
Medical  
Vandal Resistant



| Nominal Length | Nominal Input Watts |
|----------------|---------------------|
| 1' (300mm)     | 6.9                 |
| 2' (600mm)     | 9.1                 |
| 3' (900mm)     | 18.3                |
| 4' (1200mm)    | 30.4                |

| Nominal Length | Nominal Delivered Lumens* |
|----------------|---------------------------|
| 1' (300mm)     | 600                       |
| 2' (600mm)     | 800                       |
| 3' (900mm)     | 1600                      |
| 4' (1200mm)    | 2400                      |

\*A12125 Lens

## PHOTOMETRICS

See website for IES/photometric files

## ORDERING INFORMATION

SAMPLE NUMBERS: UCL-2-LD4-35-A12125-EDC1-UNV-ALH / UCLV-4-LD4-40-82-EDD1-UNV-NTP

| Series   | Fixture Length   | LED Type   | Color Temperature                            | Lens  | Driver   | Voltage    | Options  |
|--|--|------------|--|---|--|------------|--|
| <b>UCL</b> =Undercabinet, LED<br><b>UCLV</b> =Undercabinet LED, Captive Lens | 1=1' Length<br>2=2' Length<br>3=3' Length<br>4=4' Length | <b>LD4</b> | 30=3000K<br>35=3500K<br>40=4000K<br>50=5000K | <b>A12125</b> =Acrylic Pattern 12, 0.125" thick<br><b>89AH</b> =Polycarbonate Pattern 12, 0.125" Thick<br><b>KSH25</b> =Linear Ribbed Acrylic, 0.115" Thick<br><b>81</b> =Polycarbonate, Pattern 12, 0.156" thick<br><b>82</b> =Polycarbonate, Pattern 12, 0.187" thick<br><b>89BW</b> =Acrylic, Opal Smooth, 0.125" thick<br><b>89AM</b> =Polycarbonate, Opal Smooth, 0.125" thick | <b>EDC1</b> =Electronic Driver, <sup>5</sup> Single Circuit, Non-Dimming<br><b>EDD1</b> =Electronic Driver, Single Circuit, 0-10V Dimming, 10%<br><b>ED1D1</b> =Electronic Driver, Single Circuit, 0-10V Dimming, 1% | <b>UNV</b> | <b>GLR</b> =Fuse and Holder<br><b>ALH</b> =Aluminum Housing and Reflector, Powder Coat Painted White<br><b>SHN</b> =Stainless Steel, Housing and Reflector, Brushed Natural Finish on Exterior<br><b>SHP</b> =Stainless Steel, Housing and Reflector, Powder Coat Painted White<br><b>OS</b> =Occupancy Sensor, Passive Infrared Technology (not available on 1' length) <sup>6</sup><br><b>RSW</b> =Rocker Switch, White <sup>1,2,4</sup><br><b>AM</b> =Anti-Microbial Paint, Matte White<br><b>6CP</b> =6' Cord with Grounded Plug <sup>2</sup><br><b>GCO</b> =Grounded Convenience Outlet <sup>1,3,4</sup><br><b>NTP</b> =Non Tamper Proof Screws (Philips Head Countersunk) - UCLV only<br><b>GSK</b> =Gasketing applied to lens, and to cover (UCLV only) <sup>7</sup><br><b>IP63</b> =IP63 rated (UCLV only) <sup>7</sup><br><b>90</b> =90CRI <sup>8</sup> |
| <b>LD4</b> =LED Version 4.0  |  |            |  |   | <b>UNV</b> =120-277  |            |  |

**Notes:**

- Consult factory for compatibility with other options.
- Must specify voltage.
- 120V only.
- UCLV with RSW or GCO will not be available with the GSK or IP63. Please note that the RSW or GCO option on the UCLV will compromise the full vandal resistant feature.
- Standard "EDC1" driver, low voltage leads not connected to driver. "EDD1" and "ED1D1" driver, low voltage leads connected to driver.
- Occupancy Sensor is positioned on the front cover on the UCL & UCLV, and maybe subject to abuse.
- GSK not available with IP63.
- 90CRI option may require extended lead time.



## 15 Day Quick Ship

| Product | Length | LED | Color Temp | Lens   | Driver/Circuits | Voltage | Option |
|---------|--------|-----|------------|--------|-----------------|---------|--------|
| QS-UCL  | 2      | LD4 | 35         | A12125 | EDC1            | UNV     | RSW    |
|         | 4      |     | 40         |        | EDD1            |         |        |

## Notes:

Maximum order quantity is 50 pieces  
 15 days from receipt of Purchase Order at Eaton facility to shipment from Eaton facility  
 Must specify 120 or 277 voltage when using RSW option

Example Catalog #: QS-UCL-4-LD4-35-A12125-EDC1-UNV