

DESCRIPTION

The VRVT2 is an energy-efficient industrial Vaportite fixture that features rugged and durable construction. The VRVT2 incorporates a full metal fixture liner inside a reinforced fiberglass housing with a high- impact diffuser. This Vaportite is suitable for interior and exterior applications and can be surface- or chain-mounted. The rugged, durable VRVT2 is perfect for coolers, car washes, breeze/walkways, canopies and other outdoor or indoor areas where environmental abuse is a problem.

SPECIFICATION FEATURES

Construction

Fiberglass housing is reinforced polyester and self-extinguishing (ASTM-D635-74) plastic of a permanent pearl gray color. Top of housing has nine embossments (4' unit) and thirteen embossments (8' unit), providing mounting flexibility on uneven surfaces. A watertite hub for 1/2" conduit entry is provided at each end of housing (standard) for continuous feed. Polyurethane gasketing is formed in the housing providing a continuous seamless seal for the diffuser. Six sturdy cam latches

with integral T20 stainless steel TORX® screws clamp diffuser tightly for a positive seal between housing, gasket and diffuser.

Reflectors

"DR" - Clear, low brightness pattern acrylic with 15% high-impact additive. "DR-100" - Clear, low brightness pattern acrylic with 100% high-impact additive. Example: VRVT2-248HODR-100 "LEX" - High-impact, clear, low brightness pattern polycarbonate. LEXAN Example: VRVT2-248HOLEX.

Electrical *

Unit has full metal liner (channel) secured by brass internal/external mounting studs for positive grounding, maximum protection and rigidity. Ballasts are CBM/ETL Class "P" certified suitable to minus 20°F. Spring loaded lampholders.

Labels

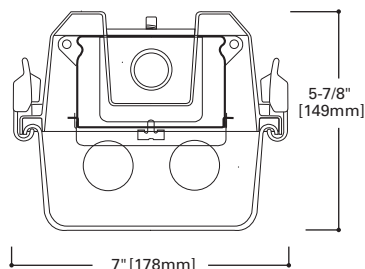
UL/cUL listed for wet locations.** IP65 approved.



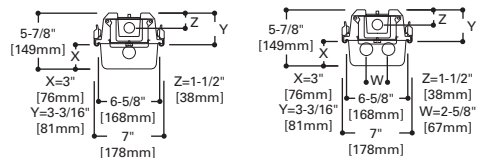
VRVT2

4' Length
Fluorescent
Vandal Resistant

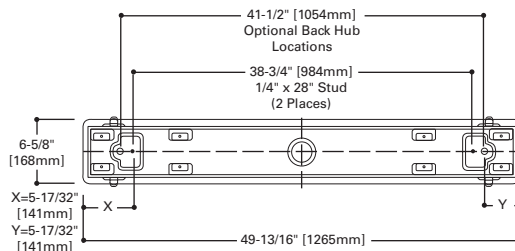
Vapor Tight
High Output
IP65 Rated



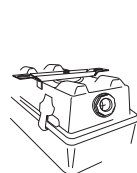
LAMP CONFIGURATIONS



MOUNTING DATA



INSTALLATION DATA



MOUNTING BRACKETS
Furnished
Two per 2' and 4' Unit
Four per 8' Unit



OPTIONAL CHAIN HANGING SET (VT2-CHAIN/SET-U)

Includes 6 ft. of chain, 4 large S-Hooks and 4 small S-Hooks
Order One (1) Kit for each 2' or 4' Fixture
Two (2) Kits Recommended For 8' Fixture

ENERGY DATA

Input Watts
STD Ballast & STD Lamps
148HO (82)
248HO (145)
148T8HO (57)
248T8HO (99)

Luminaire Efficacy Rating

LER = FI-36
Catalog Number: VRVT2-248HO DR-WL
Yearly Cost of 1000 lumens,
3000 hrs at .08 KWH = \$6.67

* Reference the lamp/ballast data in the Technical Section for specific lamp/ballast requirements.

** Not suitable for wet locations if EL4 Option is added. Consult Pre-Sales Technical Support.

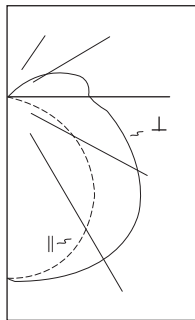
TORX® is a registered trademark of Camcar Division of Textron Inc.

ORDERING INFORMATION

SAMPLE NUMBER: VRVT2-248HO DR-WL

Tandem	Series	No. of Lamps	Wattage (Length)	Wattage (Length)	Lens Type	Voltage	Ballast Type	Options (Add as Suffix)	Accessories (Order separately)
2	VRVT2								
8T = 8' Length									
VRVT2									
1 or 2 Lamps (Not included)									
48=60W (48") 96T8=59W (96") SL									
HO=High Output (800 MA)									
Notes: For additional options, please consult Cooper Lighting Representative. ¹ Optional VT2 1/2" Stem Bushing Available.									
				DR= Internal Prismatic Lens/15% DR High-Impact Additive (Standard) DR-100=100% High-Impact Additive LEX = High-Impact Clear Polycarbonate LEXAN Lens/Low Brightness Pattern 120=120V 277=277V 347=347V UNV=Universal (120-277V)		LEOC8= Energy Saving Ballast (T8 Lamp only) EB = Generic Electronic Ballast ¹ No. of Ballasts 1 or 2 Lamp Size 8=T8 (For specific Electronic Ballast specify Brand and Catalog Number.) Ambient Thermal Conditions: Operating Ambient Temperature Limitations are applicable. Contact Sales Engineering for full "operating temperature range" of specific features.		GL= Internal Single Element Fusing GM= Dual Element Fusing EL4 = Emergency Lighting (self-contained) EL8= Emergency Lighting (self-contained) RIF1 = Radio Interference Suppressor TH = (2) Top Watertight Hubs ¹ TEH = (2) Top & (2) End - Watertite Hubs - (All Watertite Hubs Have 1/2" Conduit Entry) ¹ TILW=Tandem In-Line Wiring Option (Consult TILW Option catalog page) PI/CPI= Plug-In Option DL=Damp Location Labeled WL=Wet Location Labeled	
								VRSD=T20 Center Pin Tamperproof TORX®-head bit	

PHOTOMETRICS



VRVT2-248HO DR-WL
Electronic Ballast
F48T12/CW/HO
Lamps
4050 Lumens

Spacing criterion:
(II) 1.3 x mounting
height, (⊥) 1.5 x
mounting height
Efficiency 62.8%

Test Report
#ITL44660

LER = FI-36

Yearly Cost of 1000
lumens, 3000 hrs at
.08 KWH = \$6.67

Coefficients of Utilization

Effective floor cavity reflectance										20%											
rc	80%				70%				50%				30%				10%				0%
rw	70	50	30	10	70	50	30	10	50	30	10	50	30	10	50	30	10	0			
RCR																					
0	72	72	72	72	70	70	70	70	64	64	64	59	59	59	55	55	55	53			
1	64	60	57	54	61	58	55	52	53	51	49	49	47	45	45	44	42	40			
2	58	52	47	43	55	50	45	41	46	42	39	42	39	36	39	36	34	32			
3	52	45	39	35	50	43	38	34	40	35	32	37	33	30	34	31	28	26			
4	47	39	33	29	45	38	32	28	35	30	27	32	28	25	30	26	24	22			
5	43	35	29	24	41	33	28	24	31	26	23	29	25	21	26	23	20	19			
6	40	31	25	21	38	30	24	20	28	23	20	26	22	19	24	20	18	16			
7	37	28	22	18	35	27	22	18	25	20	17	23	19	16	22	18	15	14			
8	34	25	20	16	33	25	19	16	23	18	15	21	17	14	20	16	14	12			
9	32	23	18	14	30	23	18	14	21	17	13	20	16	13	18	15	12	11			
10	30	21	16	13	29	21	16	13	19	15	12	18	14	12	17	14	11	10			

Zonal Lumen Summary

Zone	Lumens	%Lamp	%Fixture
0-30	876	10.8	17.2
0-40	1483	18.3	29.1
0-60	2833	35.0	55.7
0-90	4273	52.8	84.0
90-180	815	10.1	16.0
0-180	5088	62.8	100.0

Candela

Angle	Along II	45°	Across ⊥
0	1070	1070	1070
10	1060	1066	1077
20	999	1047	1086
30	903	1001	1084
40	772	935	1061
50	601	833	996
60	404	693	880
70	218	557	754
80	85	440	621
90	13	308	478
100	16	287	480
110	9	209	394
120	3	110	258
130	1	43	130
140	1	14	44
150	1	4	14
160	1	1	3
170	0	0	0
180	0	0	0