

INSTALLATION INSTRUCTIONS

IMPORTANT: READ BEFORE REMOVING FIXTURE FROM CARTON. RETAIN FOR FUTURE REFERENCE.



SAFETY: This fixture must be wired in accordance with the National Electrical Code and applicable local codes and ordinances. Proper grounding is required to insure personal safety. Carefully observe grounding procedure under installation section.

WARNING: Make certain power is OFF before starting installation or attempting any maintenance. Risk of fire/electric shock. If not qualified, consult an electrician.

- **RISK OF ELECTRIC SHOCK** – Disconnect power at fuse or circuit breaker before installing or servicing.

- **RISK OF BURN** – Disconnect power and allow fixture to cool before servicing.
- **RISK OF PERSONAL INJURY** – Fixture may become damaged and/or unstable if not installed properly. Tighten all fixture components to their recommended torque values.
- **RISK OF PERSONAL INJURY** – Do not lift pole into place by securing lifting device to lighting fixture or mounting arm.
- **DO NOT** mount luminaire within 6" of a combustible surface.
- **DO NOT** handle or touch the LEDs area of the luminaire.

WARNING: Make certain power is OFF before starting installation or attempting any maintenance.

NOTE: A 3" – O.D. tenon structure is required for both single and double post mount fixtures.

APPLICATIONS

This lighting fixture is designed for outdoor lighting services, and should not be used in areas of limited ventilation or in high ambient temperature enclosures. It must be stored in a dry location prior to installation. Do not expose lighting fixture to rain, dust or other environmental conditions prior to installation and insertion of photocontrol or shorting cap (if so equipped). Construction is suitable for down lighting only. Best results will be obtained if installed and maintained according to the following recommendations.

Rated for 40°C (104°F) ambient. Suitable for wet location. Pole mount and wall mount options.

A. TO POST MOUNT A SINGLE FIXTURE

1. Loosen the captive screw and take off the cap shown in **FIG. 1**.
2. Pull supply wires from pole through the hole originally covered by the cap.
3. Pull all leads from fixture out of the same hole.
4. Slip fit the fixture onto the tenon.
5. Rotate the fixture to desired position.
6. Tighten all four (4) 3/8-16 set screws (provided) to approximately 17 ft.-lbs.
Over tightening screws may cause fixture damage.
7. Connect leads properly.
8. Push wires back into the hole.
9. Close the hole with cap and tighten the captive screw to seal the hole.

B. TO POST MOUNT DOUBLE FIXTURES WITH ARM

1. Loosen the captive screw and take off the cap shown in **FIG. 2**.
2. Pull supply wires from post through the hole originally covered by the cap.
3. Pull all leads from pole and both arm wings out of the hole.
4. Slip fit the arm onto the tenon.
5. Rotate the arm to desired position.
6. Tighten all eight (8) 3/8-16 set screws (provided) to approximately 17 ft.-lbs.
Over tightening screws may cause arm damage.
7. Connect leads properly.
8. Push wires back into the hole.
9. Repeat steps A1 through A9 above to mount both fixtures onto the arm, one on each wing.
10. Close the hole with cap.

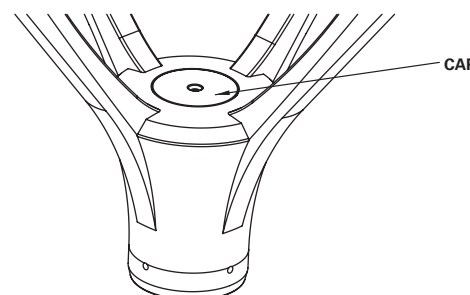


FIG. 1

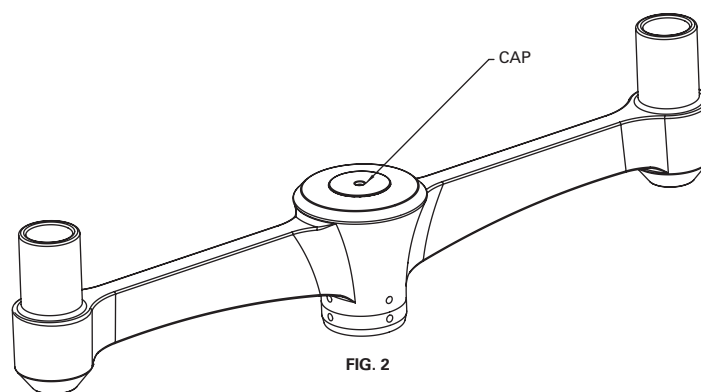


FIG. 2

These instructions do not claim to cover all details or variations in the equipment, procedure, or process described, nor to provide directions for meeting every possible contingency during installation, operation or maintenance. When additional information is desired to satisfy a problem not covered sufficiently for user's purpose, please contact your nearest representative. **NOTE:** Specifications and dimensions subject to change without notice.

INSTALLATION INSTRUCTIONS

IMPORTANT: READ BEFORE REMOVING FIXTURE FROM CARTON. RETAIN FOR FUTURE REFERENCE.

WARNING: Make certain power is OFF before starting installation or attempting any maintenance.

C. TO WALL MOUNT A FIXTURES WITH ARM

1. Using wall mount plate as a template, drill six (6) holes in wall **FIG. 3**. Install appropriate wall anchors (not supplied). Silicone caulk around junction box and wall anchors. Secure wall mount plate to wall with six (6) 1/2-13 x 1-1/2 long bolts and six (6) lockwashers. Torque bolts to 37 ft-lbs.
2. Extend supply wires from junction box to minimum 3 feet in length.
3. Pull extended supply wires through arm and hook the arm over installed wall mount plate.
4. Secure the arm by tightening the set screw on bottom to approximately 17 ft-lbs toward wall mount plate.
5. Repeat steps A1 through A9 above to mount fixture onto the arm. **B10.** Close the hole with cap.

NOTE: To wire fixture to circuits not having a neutral lead such as 480V. Connect the fixture voltage lead to one of the supply leads; the fixture common lead to the other supply lead and the fixture ground lead to a suitable ground.

WARNING: Recheck to be sure that the fixture has been wired properly. Improper wiring may result in driver failure which voids all warranties.

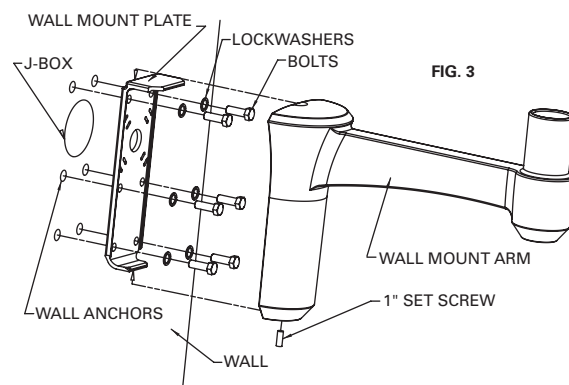
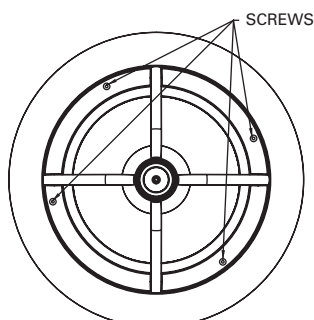
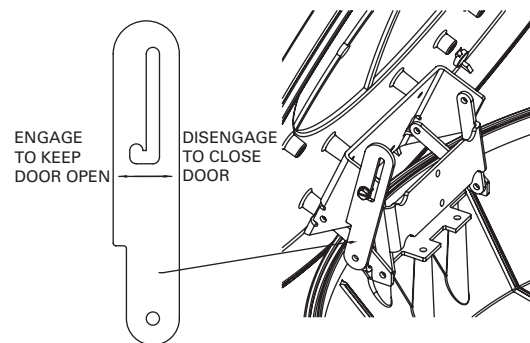
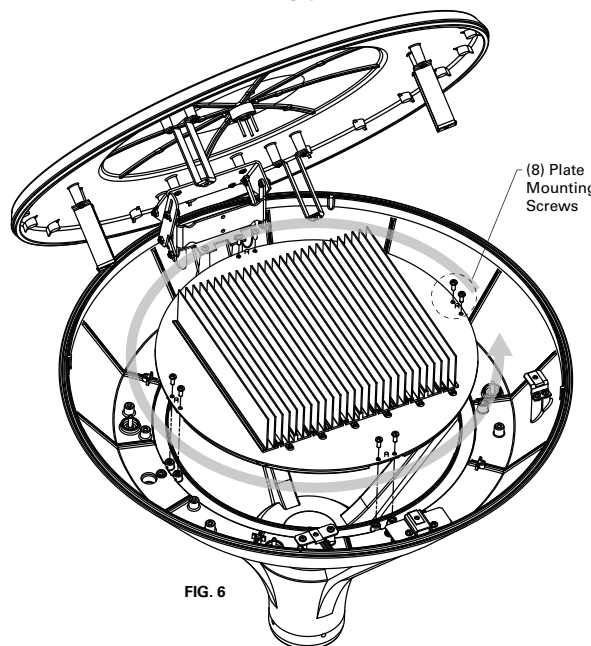
D. DISTRIBUTION

Some of the reflector options are directional beam orientated. If it is desirable to change beam direction, you have the option to rotate beam 90°.

1. Loosen all four (4) captive screws on bottom of luminaire at locations shown in **FIG. 4** until disengaged inside.
2. On top of fixture, look for an arrow sign and word "OPEN HERE". Open the top firmly and slowly from this location.
3. **ENGAGE** The HINGE LOCK as shown in **FIG. 5**. Failure to engage the hinge may cause injury.
4. Unscrew eight (8) plate mounting screws and rotate either 90° clockwise or counter clockwise to new mounting position **FIG. 6**.
5. Screw in the eight (8) plate mounting screws, then hold the top firmly and **DISENGAGE** THE HINGE LOCK as shown in **FIG. 5** Failure to disengage the hinge will cause hinge damage.
6. Close the top slowly.
7. Tighten back all four (4) captive screws.

E. TO REPLACE THE DRIVER TRAY

1. Open the top of fixture as described in D1 through D3.
2. Disconnect the driver tray completely by disengaging all connectors in the fixture.
3. Disengage all three (3) wing head screws on the tray from the housing.
4. Remove the tray using the handle on top of the tray.
5. Place new tray back, align bottom edge to the channel and all three (3) wing head screws to receptacles on housing. Tighten three (3) screws evenly.
6. Re-connect all connectors that were previously disconnected.
7. Close the top as described in D6 through D7.


FIG. 3

FIG. 4 (BOTTOM VIEW)

FIG. 5

FIG. 6

These instructions do not claim to cover all details or variations in the equipment, procedure, or process described, nor to provide directions for meeting every possible contingency during installation, operation or maintenance. When additional information is desired to satisfy a problem not covered sufficiently for user's purpose, please contact your nearest representative. **NOTE:** Specifications and dimensions subject to change without notice.

INSTALLATION INSTRUCTIONS

IMPORTANT: READ BEFORE REMOVING FIXTURE FROM CARTON. RETAIN FOR FUTURE REFERENCE.

WARNING: Make certain power is OFF before starting installation or attempting any maintenance.

F. PHOTOCONTROL ORIENTATION (IF EQUIPPED)

NOTE: The orientation procedure is only required for photocontrols which specifically require the cell to be aimed north. Otherwise, factory orientation will function properly. Follow the directions recommended by the photocontrol supplier for proximity to light sources. Lighted signs, building surface reflection, floodlights, tree branches, etc. may affect final position of the photocontrol.

1. Loosen the two (2) screws to allow rotation of the receptacle **FIG. 7**.
2. Insert screwdriver into center slot and rotate receptacle until indicator arrow points north.
3. Retighten screws.
4. Insert the photoelectric control (or shorting cap) in receptacle and twist into locking position.

NOTE: The photocontrol (not included) must contain a soft, resilient gasket fastened to the bottom surface to assure a proper weather seal between the control and the receptacle.

BI-LEVEL SWITCHING (IF EQUIPPED)

For Bi-level switching, the input leads to the fixture will be independently labeled to indicate switching preferences as appropriate (as defined by the order requirements). Two (2) separate supply lines of line voltage, neutral, and ground must be provided to the fixture to enable the bi-level switching functionality of the fixture.

MAINTENANCE

A regular maintenance schedule should be followed to retain optimal light output and thermal performance. Optical lens cleaning should be performed with a clean dry cloth to remove any dust or other contaminants. Additional cleaning can be performed with non-abrasive acrylic cleansing solution.

MOV CIRCUIT MODULE REPLACEMENT

1. Disconnect wires connected to and from quick connectors by lifting levers to corresponding wires.
2. Remove #10-24 Pan Philip screw and pull MOV Circuit Module off **FIG. 8**.
3. Insert new MOV Circuit Module and screw down to lock in place.
4. Reattach MOV Circuit Module wires to corresponding quick connectors and flip levers down to lock wires in place.

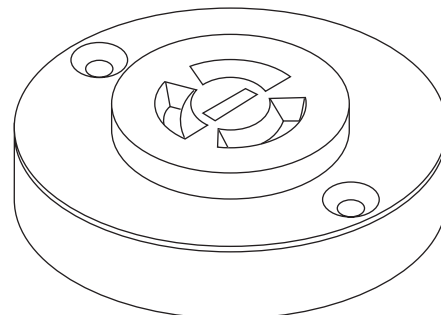


FIG. 7

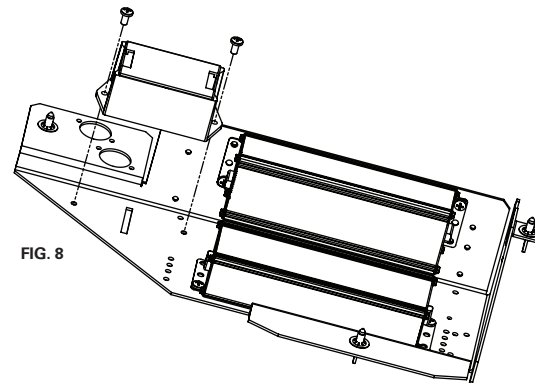


FIG. 8

These instructions do not claim to cover all details or variations in the equipment, procedure, or process described, nor to provide directions for meeting every possible contingency during installation, operation or maintenance. When additional information is desired to satisfy a problem not covered sufficiently for user's purpose, please contact your nearest representative. **NOTE:** Specifications and dimensions subject to change without notice.