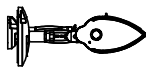
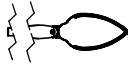



BASE MOUNT

WALL MOUNT

CANTILEVER MOUNT

CEILING MOUNT

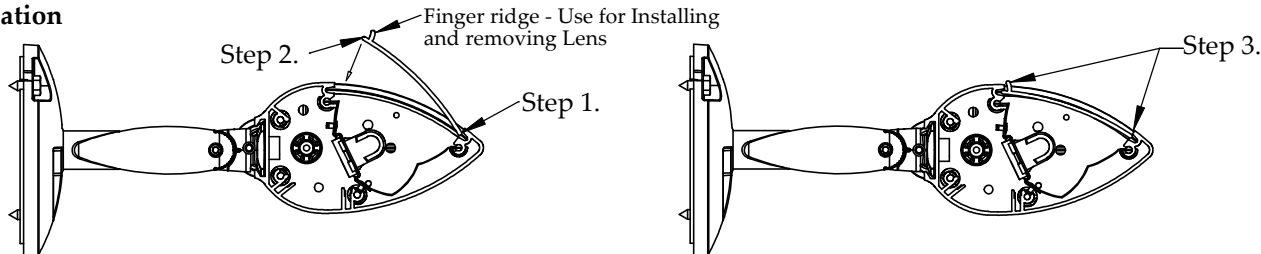
These installation instructions are valid with the above Arrowlinear mounting options.

ARROWLINEAR OUTDOOR SEALING

BASE, CEILING, WALL,
CANTILEVER

Warning: Before starting any work ensure that all sources of power are turned off. All work must meet local/national codes and be performed by a certified electrician. **Do not** mount fixtures vertically. Indoor fixtures cannot be used for outdoor applications.

Lens removal and installation



1A. To remove the lens:

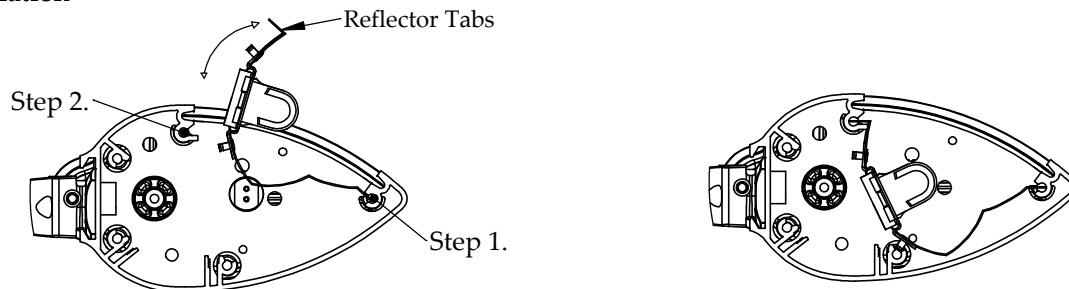
- Locate the finger ridge along the top edge of the lens.
- Using three or four fingers, firmly grip the back edge of the finger ridge at one corner, pull up and back until the corner of the lens is released, then gently lift up along the top edge of the lens until it is completely released.

1B. To install the lens:

- With the finger ridge on top, and the plain edge on the bottom, place the bottom edge of the lens into the bottom gasket channel as shown in Step 1.
- Starting at one end, push the top corner of the lens into the top gasket channel (Step 2), then continue to push the lens into the channel along the entire top edge of the opening until the lens snaps firmly in place (Step 3). **IMPORTANT:** Bottom edge of the lens must remain perfectly aligned and engaged with the bottom gasket channel during this step.

WARNING: Lens must be properly inserted and snapped firmly in place to engage the lens gaskets, which is necessary for proper sealing. Improper installation of the lens, or use of a damaged lens and/or gasket may allow water into the luminaire which can damage the electrical components and/or cause personal injury or death.

Reflector removal and installation



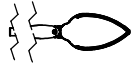
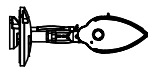
2A. To remove the reflector (required to install power feed and make electrical connections)

- Carefully remove the lens as instructed in "LENS REMOVAL AND INSTALLATION" 1A (above).
- Locate the reflector tabs along the top of the reflector at both ends, then gently pull the tabs out of the mounting channel.
- Gently rotate the reflector forward and out, being careful not to bend, scratch or otherwise damage the reflector.

2B. To re-install the reflector

- After all wire connections have been made, align the reflector with the fixture opening, then carefully insert the lower edge of the reflector into the lower reflector channel (below the bottom gasket channel) as shown in Step 1.
- Gently insert the top edge of the reflector into the top reflector channel, being careful not to bend, scratch or otherwise damage the reflector. **IMPORTANT:** Top and bottom edge of the reflector must be completely inserted into the top and bottom reflector channel during this step.

WARNING: The reflector must be inserted completely into the top and bottom reflector channels. Failure to do so may prevent the lens from snapping firmly in place, which is necessary for proper sealing. Improper sealing may allow water into the luminaire which can damage the electrical components and/or cause personal injury or death.


BASE MOUNT
WALL MOUNT
CANTILEVER MOUNT
CEILING MOUNT

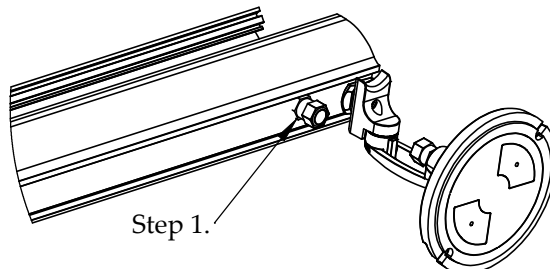
These installation instructions are valid with the above Arrowlinear mounting options.

ARROWLINEAR OUTDOOR SEALING

AK / AC : BASE, CEILING,
WALL, CANTILEVER

Warning: Before starting any work ensure that all sources of power are turned off. All work must meet local/national codes and be performed by a certified electrician. **Do not** mount fixtures vertically. Indoor fixtures cannot be used for outdoor applications.

Installation of water-proof power cord connector

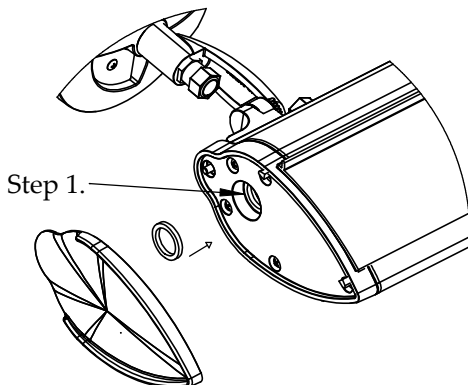


3A. To install water-proof cord connector

- Remove the flat plug located on the back side of the fixture by unscrewing.
- Screw the water-proof cord connector into the hole as shown in Step 1 - do not tighten yet.
- Insert the power cord through the water-proof cord connector, then tighten the water-proof cord connector using a double wrench - tighten only the top nut until the seal is complete. Water-proof cord connector should be firmly tightened, but do not over tighten.

WARNING: The water-proof cord connector must be firmly tightened for proper sealing. Improper sealing may allow water into the luminaire which can damage the electrical components and/or cause personal injury or death.

Installation of decorative end caps

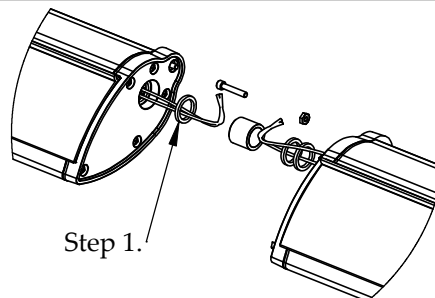


4A. To install decorative end caps

- Install gasket (provided) inside the large opening at each end of the fixture as shown in Step 1.
- Align and attach the decorative end cap using the 10 x 32 x 1/2" socket cap screw (provided). Screw should be firmly tightened, but do not over tighten.

WARNING: Decorative end caps must be properly gasketed and firmly tightened for proper sealing. Improper sealing may allow water into the luminaire which can damage the electrical components and/or cause personal injury or death.

Attaching multiple fixtures (continuous row configurations only)



5A. To attach fixtures to one another

- Install gaskets (provided) inside the large opening at each end of the two fixtures to be joined as shown in Step 1.
- Insert the stainless steel wiring sleeve into the large opening at each end of the two fixtures to be joined.
- Pull through-wiring through the stainless steel wiring sleeve.
- Align and attach the two fixtures together using the 10 x 32 x 1/2" socket cap screw (provided). Screw should be firmly tightened, but do not over tighten.

WARNING: When attaching multiple fixtures the stainless steel wiring sleeve must be inserted, and end caps must be properly gasketed and firmly tightened for proper sealing. Improper sealing may allow water into the luminaire which can damage the electrical components and/or cause personal injury or death.