

DESCRIPTION

Recessed 6 inch aperture lens downlight for two horizontal 26W double twin tube compact fluorescent lamps. Fixture is suitable for commercial construction and wet location listed. Insulation must be kept 3" from top and sides of housing. Universal input electronic ballast with dimming and emergency options.

Catalog #		Type
Project		
Comments		Date
Prepared by		

SPECIFICATION FEATURES

MECHANICAL

Frame

Boat shaped galvanized steel frame with 1/2" plaster lip accommodates ceilings up to 2" thick. May be used for new construction or remodeling installations. Provided with (2) remodel clips to secure frame when installed from below the ceiling.

Mounting Brackets

Bar hanger receivers adjusts 2" vertically from above the ceiling or thru the aperture. Use with No Fuss™ bar hangers or with 1/2" EMT. Removable to facilitate installation from below the ceiling.

No Fuss™ Bar Hangers

Optional bar hanger locks to tee grid with a screwdriver or pliers. Centering mechanism allows consistent positioning of fixtures.

OPTICAL

Reflector

One piece aluminum reflector secures lens in place with integrated spring clips for a visually comfortable optic and allows for tool-less lens exchange from below the ceiling. Available with clear, diffuse, prismatic, fresnel or drop opal glass lens. Optional cross blade louver provides sharper cutoff to lamp. Self flanged standard.

- **Specular Reflectors** - Polished flange standard with white painted flange option.
- **Baffles and White Reflector** - White painted flange standard.

Trim Retention

Reflector is retained with two torsion springs and held tightly to the finished ceiling surface.

ELECTRICAL

Junction Box

(6) 1/2" and (2) 3/4" trade size pry outs positioned to allow straight conduit runs. Listed for (12) #12 AWG (six in, six out) 90°C conductors and feed thru branch wiring.

Lamp Socket

4-pin G24q base accepts (2) 26W DTT lamps.

Socket Housing

Galvanized steel socket housing attached securely to reflector with captive thumbscrew. Vents provide effective lamp thermal management.

Control Gear

Universal 120V - 277V UNV or 347V input electronic ballast for 26W compact fluorescent lamp.

Emergency Battery Pack

REM - Remote emergency test switch. Housing includes 120V/277V, 60Hz dual-tap battery pack provides 90 minutes of emergency illumination. Long life maintenance free sealed nickel cadmium batteries recharge fully in 24 hours. REM configuration includes prewired and attached remote test switch plate and indicator light. REM option is the standard emergency configuration, and is compatible with all standard reflector options, ordered separately.

IEM - Integral emergency test switch. Housing includes 120V/277V, 60Hz dual-tap battery pack provides 90 minutes of emergency illumination. Long life maintenance free sealed nickel cadmium batteries recharge fully in 24 hours. IEM configuration includes a prewired integral

emergency test switch and indicator light that are both accessible inside the reflector. The IEM option requires "EM" designated reflectors only, ordered separately.

Emergency Battery Pack - Average Lamp Lumen Ratings

REM option: (1-lamp only) 26W 425lm

IEM option: (2) 26W 1220lm

(Note: average lamp lumens are based upon REM and IEM manufacturer ratings. Delivered lumens depend upon trim; refer to trim photometry to factor delivered lumens).

Code Compliance

- Thermally protected and cULus listed for wet locations.
- IP44 rated for lens trims.
- NFPA Life Safety (Emergency Battery Pack).
- EMI/RFI per FCC Title 47 CFR, Part 18, non consumer limits.
- High efficacy luminaire may be used to meet IECC, ASHRAE, and Title 24 commercial standards.



**PD6H226
62H**

(2) 26W DTT

Compact Fluorescent

**6-Inch Aperture
Lens Downlight**

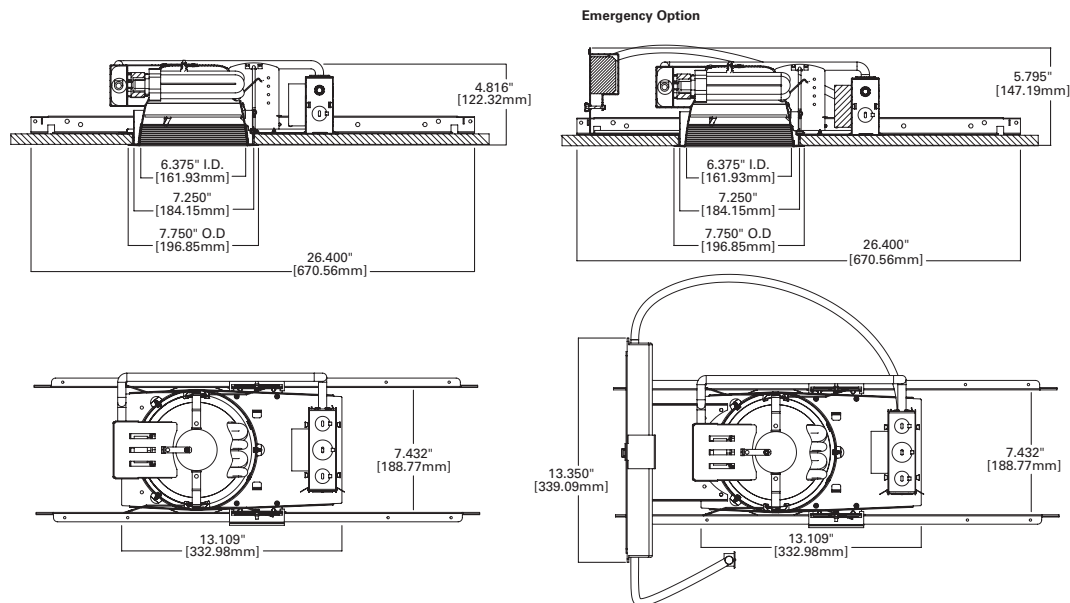
**New Construction or
Remodel
Non-IC**

ENERGY DATA

PD6H226E, PD6CPH226E	
Min. Starting Temp -5°F / -20°C	Sound Rating Class A
EMI/RFI Emissions FCC 47CFR Part 18 Non-Consumer Limits	
Input Frequency 50/60 Hz	Power Factor > 0.98
THD < 10%	Input Voltage 120V - 277V ±10%
Crest factor < 1.7	Ballast factor 1.00
Operating Frequency > 40kHz	UL Listed Class P, Type 1 Outdoor, CSA or C/UL Certified
(2) CFQ26W/G24Q	Input Power 54W
	Input Current 0.50A @ 120V
	Input Current 0.22A @ 277V

PD6H2263E	
Min. Starting Temp 0°F / -18°C	Sound Rating Class A
EMI/RFI Emissions FCC 47CFR Part 18 Non-Consumer Limits	
Input Frequency 60Hz	Power Factor > 0.98
THD < 10%	Input Voltage 347VAC ±10%
CREST FACTOR < 1.5	Ballast factor 0.98
Operating Frequency 50-60 kHz	cULus Listed Class P, Type 1 Outdoor, Type CC
(2) CFQ26W/G24Q	Input Power 57W
	INPUT CURRENT 0.17A @ 347V

DIMENSIONS



ORDERING INFORMATION

SAMPLE NUMBER: PD6H226E 62H1GC

Order housing, reflector and lamp separately for a complete luminaire.

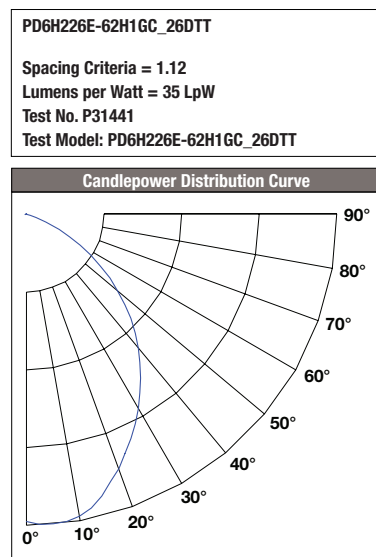
Housing PD6H226 = 6 Inch horizontal (2) 26W DTT CFL PD6CPH226 = 6 Inch horizontal (2) 26W DTT CFL, CCEA listed (Chicago Plenum)	Reflector 62H = 6" horizontal 62HEM = 6" Horizontal, Emergency (required with IEM ballast option)	Regressed Lens Option 1G =Prismatic Glass 2G =Diffuse Glass 3G =Clear Glass 4G =Fresnel Glass Polymer "Dead Front" Trim^{1,2} 1GDF =Prismatic Glass with "Dead Front" Trim 2GDF =Diffuse Glass with "Dead Front" Trim 3GDF =Clear Glass with "Dead Front" Trim 4GDF =Fresnel Glass with "Dead Front" Trim 5GDF =Drop Opal Glass with "Dead Front" Trim	Finish Option C =Specular Clear G =Specular Gold H =Semi Specular Clear W =White BB = Black baffle WB = White baffle Flange Option Blank =Polished Flange (C, G, H) Blank =White flange (W, BB, WB) WF =White Flange (C, G, H)	Accessories HB128APK = L channel hanger bar, 26", 'No-Fuss', pair (replacement) RMB22 = 22" long wood joist mounting bars
------------------------------------------------------------------------------------------------------------------------------------------------------------	------------------------------------------------------------------------------------------------------------------------------	-------------------------------------------------------------------------------------------------------------------------------------------------------------------------------------------------------------------------------------------------------------------------------------------------------------------------------------------------------------------------------------------------------------------------------------------------------------------------------	-----------------------------------------------------------------------------------------------------------------------------------------------------------------------------------------------------------------------------------------------------------------------------------------------------------------------------------------------	------------------------------------------------------------------------------------------------------------------------------------------------------

Ballast Option
E = 120V - 277V 50/60Hz UNV
REM = 120V/277V 60Hz dual-tap emergency battery ballast with remote test switch plate
3E = 347V, 50/60Hz
1DMARKX = 5% two-wire (26W) dimming, 120V
2DMARKX = 5% two-wire (26W) dimming, 277V
EDMARK7 = 5% 0-10V discrete two-wire (26W) dimming, 120-277V
1DMARKXREM = 5% two-wire (26W) dimming, 120V; with REM emergency option
2DMARKXREM = 5% two-wire (26W) dimming, 277V; with REM emergency option
EDMARK7REM = 5% 0-10V discrete two-wire (26W) dimming, 120-277V; with REM emergency option

Integral Emergency Ballast Option
IEM = 120/277V 60Hz dual-tap, Integral Emergency battery ballast with test switch through reflector*
1DMARKXIEM = 5% two-wire (26W) dimming, 120V; with IEM emergency option*
2DMARKXIEM = 5% two-wire (26W) dimming, 277V; with IEM emergency option*
EDMARK7IEM = 5% 0-10V discrete two-wire (26W) dimming, 120-277V; with IEM emergency option*
 *Requires "EM" reflectors only, ordered separately

Note:
 1 "DF" trim option includes Specular Clear (C) reflector and white polymer flange only. No other finish or flange options apply.
 2 "DF" trim option not available with "IEM" emergency.

PHOTOMETRY



Candela Distribution	
Degrees Vertical	Candela
0*	920
5	931
15	873
25	742
35	599
45	442
55	272
65	109
75	3
85	0
90	0

*CBCP

Luminance	
(Average Candela/M²)	
Degree	Avg. 0° Luminance
45	24463
55	17140
65	8265
75	297
85	0

Cone of Light Footcandles			
Distance to Illuminated Plane	Initial Nadir Footcandles	Beam (ft.)	
		L Length	W Width
5.5'	30	5.7	6.2
7'	19	7.2	7.9
8'	14	8.3	9.1
9'	11	9.3	10.2
10'	9	10.3	11.3
12'	6	12.4	13.6
14'	5	14.4	15.8

Beam diameter is to 50% of maximum footcandles, rounded to the nearest half-foot.
Footcandle values are initial, apply appropriate light loss factors where necessary.

Zonal Lumen Summary			
Zone	Lumens	% Lamp	% Fixture
0-30	651.83	19.10	37.80
0-40	1017.79	29.80	59.00
0-60	1595.78	46.70	92.60
0-90	1723.88	50.40	100.00