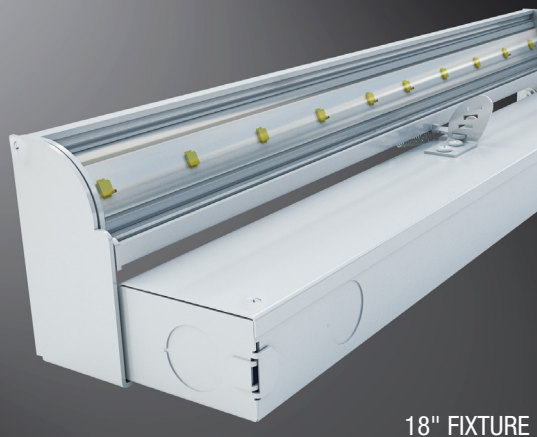
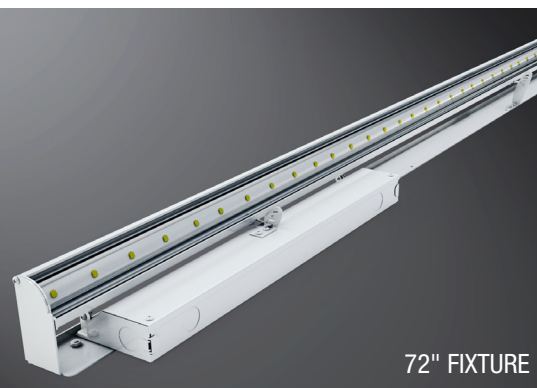


raye G2

3"H X 3.6"W



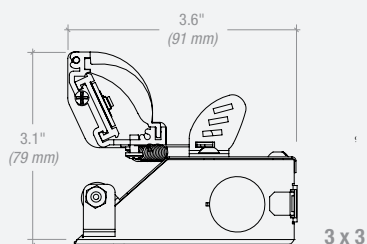
18" FIXTURE



72" FIXTURE

5-year warranty

Dimensions



3 x 3

LED lighting facts®
A Program of the U.S. DOE

io Lighting

Light Output (Lumens) **3369**
Watts **74.4**
Lumens per Watt (Efficacy) **45**

Color Accuracy
Color Rendering Index (CRI) **83**

Light Color
Correlated Color Temperature (CCT) **3155 (Bright White)**

Warm White Bright White Daylight
2700K 3000K 4500K 6500K

Warranty** **Yes**

All results, except LED Lumen Maintenance, are according to IESNA LM-79-2008: Approved Method for the Electrical and Photometric Testing of Solid-State Lighting. The U.S. Department of Energy (DOE) verifies product test data and results.

** See www.lightingfacts.com/products for details.

Registration Number: PNE4-GEJS2H (7/11/2013)

Model Number: 0.08.3KV2HO.C33.1.72

Type: Cove light

Label references 72" raye fixture in V2HO 3000K. Lighting Facts for additional beam spreads and light output levels may be obtained from io Lighting.

Application

raye Generation 2 (G2) is today's answer to high performance cove applications. Available in a 3" x 3" housing (2" x 6" housing also available), much of the extruded aluminum heat sinking (required for Raye Gen 1) has been removed enabling a cost reduction while maintaining superior thermal management. **io** utilizes the highest efficacy LEDs and tightest Binning (2-step MacAdam). **raye** Gen 2 is the high-performance, affordable answer to new and retrofit cove applications. While exceeding T8 & T5 high performance alternatives, **raye's** optical assembly has been designed to uniformly illuminate the interior surfaces of the cove while offering a very precise asymmetric beam projection. Now field adjustable, the fixture can be tilted up to illuminate various types of ceiling conditions (i.e. barrel vaults). An LED tray can be removed in the field via a quick disconnect for future maintenance without disrupting the permanent installation. The driver is also easily accessible for future maintenance. Projected average rated life is 50,000 hours at 70% of lamp lumen output. **io** utilizes LEDs that are compliant with LM 80 standards. Ambient temperature surrounding the fixture shall not exceed 122°F (50°C).

Light Output

raye is available with four lumen outputs for white light only. All values listed below represent initial lumens. LM79 IES format files are available on the Cooper website. **io** only delivers high quality white light solutions with 2-step Binning. 80+CRI is standard. For 90+ CRI, please consult factory for pricing and lead-time.

>> 2-step MacAdam Binning.

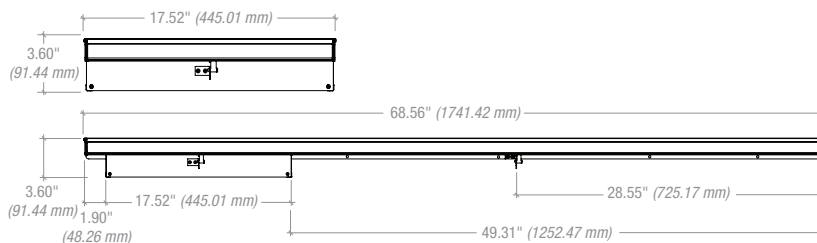
	Standard Output	Mid Output	Very High Output	V2HO
INITIAL LUMENS				
2700K White:	342 lms/ft	456 lms/ft	661 lms/ft	684 lms/ft
3000K White:	384 lms/ft	512 lms/ft	742 lms/ft	768 lms/ft
3500K White:	390 lms/ft	520 lms/ft	754 lms/ft	780 lms/ft
4000K White:	414 lms/ft	552 lms/ft	800 lms/ft	828 lms/ft
POWER CONSUMPTION*				
	4.80 w/ft	6.40 w/ft	9.60 w/ft	10.56 w/ft

Non-standard color temperatures available as a custom offering for a modest additional cost and lead-time.

* Power Consumption does not include power supply losses.

Construction

raye's wireway housing is die formed 20 gauge prime cold rolled steel. The wireway is 17.15" in length for both the 18" & 72" fixtures. Knockouts are provided for 1/2" conduit fittings. Wiring components and Drivers are mounted to a one piece back housing, permitting removal of the cover for ease of maintenance. An anodized aluminum channel which houses the LED tray and optic is mechanically fastened to a metal channel that runs the length of the fixture.



Mounting Options

raye is designed to be surface mounted within an architectural cove for indirect illumination. For a uniform distribution (with no socket shadows) of light fixtures should be mounted end-to-end.

Electrical

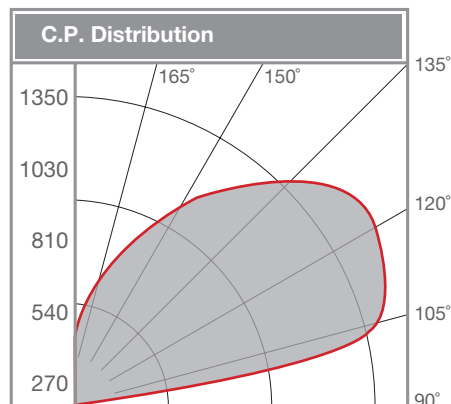
All fixtures are pre-wired and pre-assembled for easy installation. Electronic drivers (universal power supplies, 120-277v) are integral within the sheet metal wire way housing for both the 18" and 72" units.

Finish

White powder coat paint finish is standard.

COVE LIGHTING

3KV2HO – 72" Length



10" MOUNTING DISTANCE

Ceiling Height	2'	4'	6'	8'	10'	12'
11'-6" (3.51m)	25.5fc	26.3fc	25.5fc	23.5fc	22.4fc	22.2fc
10'-6" (3.20m)	26.8fc	27.3fc	25.4fc	22.9fc	20.9fc	20.4fc
9'-6" (2.90m)	28.5fc	28.3fc	24.8fc	21.5fc	19.1fc	18.5fc
8'-6" (2.59m)	32.5fc	32.2fc	27.2fc	21.9fc	18.0fc	17.3fc

*Calculations based on 3KV2HO LEDs.

LIGHT OUTPUT CONVERSION TABLE

	Standard Output	High Output	Very High Output	V2HO
2700K White	0.44 ⁽¹⁾	0.72 ⁽¹⁾	0.95 ⁽¹⁾	1.40 ⁽¹⁾
3000K White	0.47 ⁽¹⁾	0.75 ⁽¹⁾	1.00 ⁽¹⁾	1.47 ⁽¹⁾
3500K White	0.48 ⁽¹⁾	0.77 ⁽¹⁾	1.03 ⁽¹⁾	1.51 ⁽¹⁾
4000K White	0.47 ⁽¹⁾	0.75 ⁽¹⁾	1.00 ⁽¹⁾	1.47 ⁽¹⁾

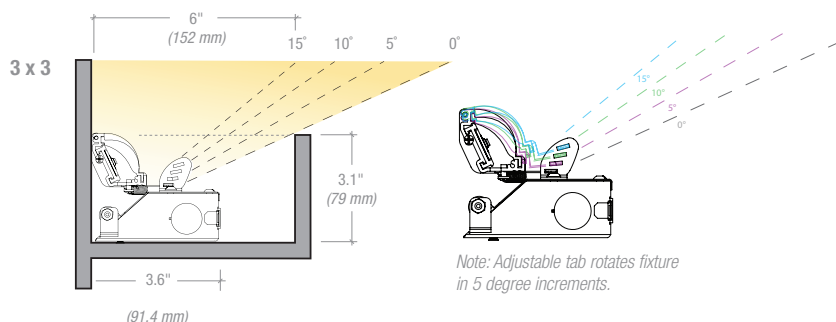
Visit www.iolighting.com or contact an **io** representative for IES format photometrics.

NEW: FIELD ADJUSTABLE ILLUMINATION ANGLES



Application Notes

- For cove applications, there should not be less than 6" of lampless (fixtureless) space at the end of all run lengths.
- For cove applications, **raye** luminaires shall be butted end to end to eliminate any opportunity for socket shadows.
- For ease of maintenance, the Printed Circuit Board (PCB) Assembly may be removed from the all **raye** housings via a quick disconnect and a removable extruded aluminum sliding tray (which contains the PCB). This can be accomplished without removing the wireway which is connected to line voltage.



Note: Adjustable tab rotates fixture in 5 degree increments.

Order Code

0	08			1			
io	1	2	3	4	5	6	

1. SERIES

08 raye Gen 2

2. COLOR

27K White 2700K S0⁽¹⁾
27KH0 White 2700K H0⁽¹⁾
27KVH0 White 2700K VHO⁽¹⁾
27KV2HO White 2700K V2HO⁽¹⁾
3K White 3000K S0⁽¹⁾
3KH0 White 3000K H0⁽¹⁾
3KVH0 White 3000K VHO⁽¹⁾
3KV2HO White 3000K V2HO⁽¹⁾

35K White 3500K S0⁽¹⁾
35KH0 White 3500K H0⁽¹⁾
35KVH0 White 3500K VHO⁽¹⁾
35KV2HO White 3500K V2HO⁽¹⁾
4K White 4000K S0⁽¹⁾
4KH0 White 4000K H0⁽¹⁾
4KVH0 White 4000K VHO⁽¹⁾
4KV2HO White 4000K V2HO⁽¹⁾
CC Custom Color⁽²⁾

3. MOUNTING

C33 Cove 3" x 3"
Note: 2" x 6" profile also available

4. FINISH

1 White

5. LENGTH

UNITS (ACTUAL)
18 18" (17.52"/445.01mm)
72 72" (68.56"/68.56mm)

FOR CONTINUOUS ROW
Specify length (e.g., 51'-0")
Note: Overall length must be multiples of 72" and 18" lengths.

6. VOLTAGE / DIMMING

ND Non-Dimming (120-277v)
D 0-10V (Osram)⁽³⁾
DALI DALI (Osram)⁽³⁾
DMX DMX (Osram)⁽³⁾
L Lutron Hi-lume A-Series

Footnotes

- White light variance between LEDs is equal to or better than 3-step MacAdam Binning.
- Non-standard color temperature and CRI are available. Consult factory for availability.
- Consult factory for other dimming driver options.



YouTube

raye applications
youtube.com/iolighting