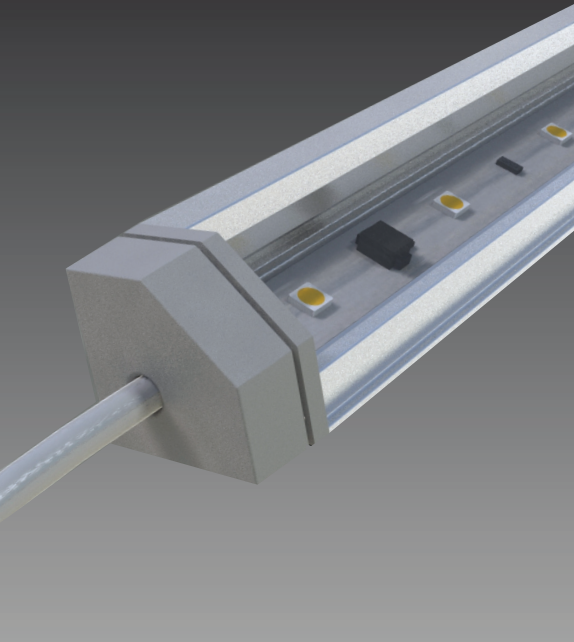


line™ .75

INTERIOR APPLICATIONS

ASYMMETRIC



5-year warranty

Application

io Lighting's **line series .75** is approximately .75" x .75" in cross section. UL listed for dry locations, its low profile housing enables functional luminous intensities from "tight" architectural details such as niches, coves and casework. Similar to halogen light sources, LEDs are point sources that offer superior definition to three-dimensional objects and sparkle to reflective surfaces. **line .75** asymmetric is also suitable for closet applications.

series .75 is a low voltage linear accent luminaire that may be ordered in incremental lengths that range from 6" to 72" nominal. The asymmetric beam spread is optimized for a forward throw distribution. For details on the symmetric beam spread, see dedicated specification sheet. Projected average rated life is 50,000 hours at 70% of lamp lumen output. To ensure proper performance, architectural details should allow for ventilation and air flow around the fixture. Ambient temperature surrounding the fixture shall not exceed 122°F (50°C).

Light Output

line series .75 is available with three lumen outputs for white light only. All values below represent the initial raw lumens of the LED. IES format photometry of Lighting Facts labels represent actual light output measured in lumens and candlepower. Light Output losses include optical, thermal and power supply inefficiencies. IES LM-79 format files may be obtained from the factory or downloaded from www.iolighting.com. All products have a CRI greater than 80. Results are typical measurements.

>> 3-step MacAdam Binning.

	Standard Output	High Output	Very High Output
INITIAL LUMENS			
2700K White:	72 lms/ft	253 lms/ft	362 lms/ft
3000K White:	81 lms/ft	284 lms/ft	406 lms/ft
3500K White:	83 lms/ft	289 lms/ft	413 lms/ft
4000K White:	88 lms/ft	307 lms/ft	438 lms/ft
POWER CONSUMPTION*			
	1.02 w/ft	3.81 w/ft	5.08 w/ft

Non-standard color temperatures available as a custom offering at additional cost and lead-time.

* Power Consumption does not include power supply losses.

Construction

Extruded aluminum housing coupled with a patented optical assembly may not be disassembled for re-lamping. Customized acrylic optics offer very high transmissivity, UV stability and excellent longevity. Three mounting bracket options include: surface, side surface and field adjustable. Bracket material is composed of stainless steel for ease of installation and removal as required.

Electrical

4'-0" 22 AWG, 300 volt rated power cords are supplied on one or both ends of the fixture as specified. Field configurable electrical feed guards against unforeseen field conditions. For detailed information regarding daisy chain limitations, remote distance limitations, power supply options, and dimming options consult the io website (www.iolighting.com) or an io representative.

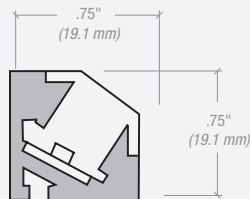
DRIVER REMOTE DISTANCE

- 7'-0" (2.1m) w/22 AWG
- 18'-0" (5.5m) w/18 AWG
- 46'-0" (14.0m) w/14 AWG
- 71'-0" (21.6m) w/12 AWG

Finish

Anodized aluminum finish is standard. Custom finishes may be available upon request.

Dimensions



io Lighting

LED lighting facts
A Program of the U.S. DOE

Light Output (Lumens)	1030
Watts	18.5
Lumens per Watt (Efficacy)	56
Color Accuracy Color Rendering Index (CRI)	
	82
Light Color Correlated Color Temperature (CCT)	
3007 (Bright White)	
Warranty**	Yes

All results, except LED Lumen Maintenance, are according to IESNA LM-79-2008: Approved Method for the Electrical and Photometric Testing of Solid-State Lighting. The U.S. Department of Energy (DOE) verifies product test data and results.

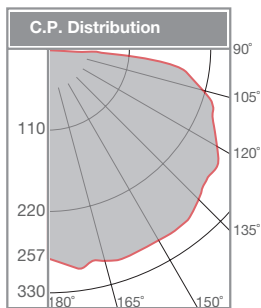
** See www.lightingfacts.com/products for details.

Registration Number: PNE4-6CTBZQ (7/11/2013)
Model Number: 0.03.1.3KVHO.90.1.06.2
Type: Under-cabinet or Shelf-mounted light

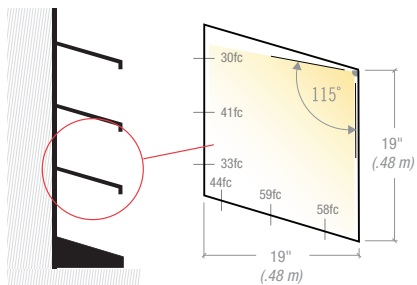
Label references 72" line .75 asymmetric fixture in Very High Output 3000K. Lighting Facts for additional beam spreads and light output levels may be obtained from io Lighting.

30" 3KHO 90 DEGREE

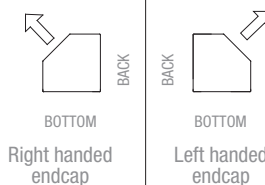
Light Output / Distributions



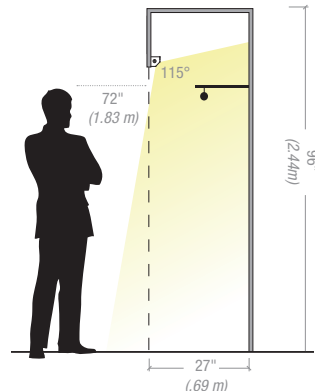
SHELF LIGHTING - 3000K High Output



BEAM DIRECTION



CLOSET LIGHT APPLICATION



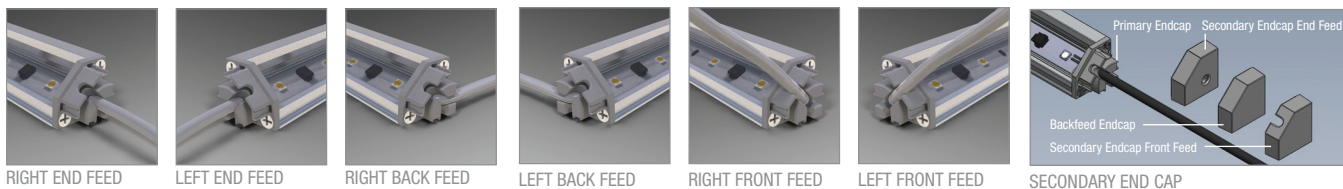
LIGHT OUTPUT CONVERSION TABLE

	Standard Output	High Output	Very High Output
2700K White	0.25 ⁽¹⁾	0.94 ⁽¹⁾	1.30 ⁽¹⁾
3000K White	0.27 ⁽¹⁾	1.00 ⁽¹⁾	1.39 ⁽¹⁾
3500K White	0.29 ⁽¹⁾	1.06 ⁽¹⁾	1.54 ⁽¹⁾
4000K White	0.29 ⁽¹⁾	1.06 ⁽¹⁾	1.49 ⁽¹⁾

Note: Visit www.iolighting.com or contact an *io* representative for IES format photometrics.

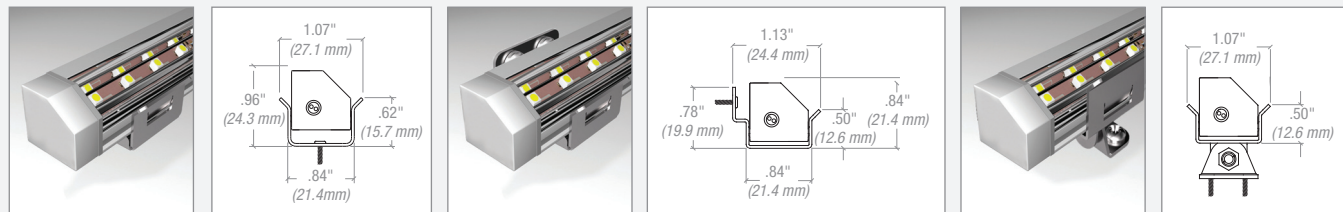
NEW FIELD CONFIGURABLE ELECTRICAL FEED

Electrical Feed Options



Note: Electrical contractor may adjust orientation of electrical feed in the field.

Mounting Options



100 Surface (io part #: SA.BK.SURF)

101 Side surface (io part #: SA.BK.WALL)

102 Field adjustable (io part #: SA.BK.ADJMT)

0 03 I 1 2 3 4 5 6 7 8 9 10 11

Order Code

- 1. **LINE SERIES**
03 .75 SO, HO or VHO
- 2. **LOCATION**
I Interior
IC Closet
- 3. **COLOR**
27K White 2700K SO⁽¹⁾
27KHO White 2700K HO⁽¹⁾
27KVHO White 2700K VHO⁽¹⁾
3K White 3000K SO⁽¹⁾
3KHO White 3000K HO⁽¹⁾
3KVHO White 3000K VHO⁽¹⁾
35K White 3500K SO⁽¹⁾
35KHO White 3500K HO⁽¹⁾
35KVHO White 3500K VHO⁽¹⁾

- 4K White 4000K SO⁽¹⁾
4KHO White 4000K HO⁽¹⁾
4KVHO White 4000K VHO⁽¹⁾
CC Custom Color⁽²⁾
- 4. **DISTRIBUTION**
90 Asymmetric clear lens
91 Asymmetric opal white lens
- 5. **MOUNTING**
100 Surface
101 Side surface
102 Field adjustable

- 6. **FINISH**
1 Anodized aluminum
2 Anodized custom color
- 7. **LENGTH**
ACTUAL (in/mm)
01 6" (6.53"/165.86mm)
02 12" (12.22"/310.38mm)
03 18" (17.97"/456.43mm)
04 24" (23.53"/597.66mm)
05 30" (29.22"/742.18mm)
06 36" (34.97"/888.23mm)
07 42" (40.53"/1029.46mm)
08 48" (46.22"/1173.98mm)
09 54" (51.97"/1320.03mm)
10 60" (57.53"/1461.26mm)
11 66" (63.22"/1605.78mm)
12 72" (68.97"/1751.83mm)

- 8. **ELECTRICAL FEED**
1 One feed right end
2 One feed left end
12 Double end feed
Note: Electrical contractor may adjust orientation of electrical feed in the field.
- 9. **VOLTAGE / DIMMING**
1 120v
2 277v
3 120v w/dim
4 277v w/dim
5 Other (International voltage)

- 10. **SPECIFY DRIVER / DIMMING**
Note: If not specified otherwise, *io* will supply 100 watt drivers. Download Power Supply specification sheet from www.iolighting.com.
- 11. _____
CE Available upon request.

Footnotes

1. White light variance between LEDs is equal to or better than 3-step MacAdam Binning.
2. Non-standard color temperature and CRI are available. Consult factory for availability.

YouTube
line .75 applications
youtube.com/iolighting