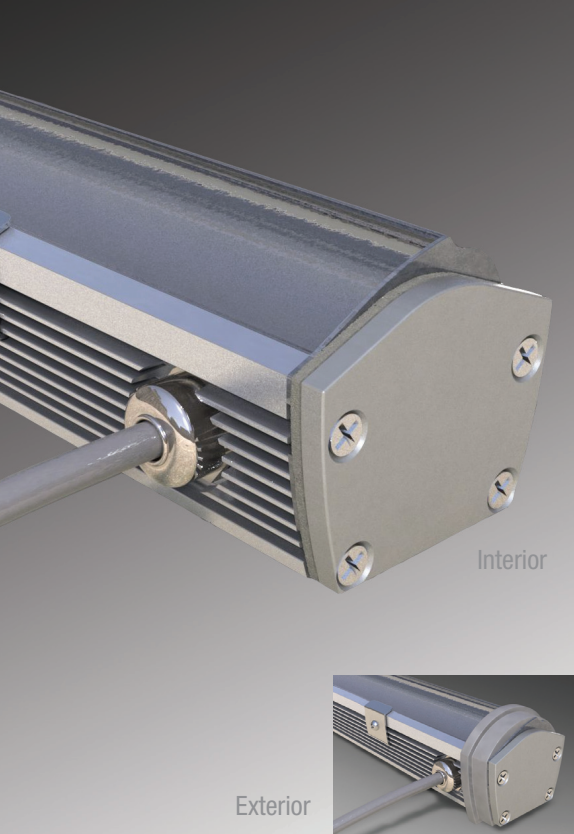


line™ 2.0

INTERIOR/EXTERIOR
APPLICATIONS

ASYMMETRIC

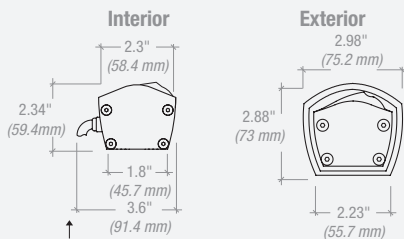


Interior

Exterior

5-year warranty

Dimensions



Dimension includes electrical feed and wire bending radius.

Application

io Lighting's **line series 2.0** is a low voltage linear floodlight luminaire that utilizes high brightness LEDs. **series 2.0** may be specified for interior or exterior applications and may be ordered in nominal lengths of 18", 36", 54" and 72". The precise asymmetric beam spread is excellent for wall washing, sign lighting or pathway applications. **series 2.0's** patented optical assembly is designed to practically eliminate stray light, making it perfect for applications where light pollution and/or light trespass are important design considerations.

Projected average rated life is 50,000 hours at 70% of lamp lumen output. Ambient temperature surrounding the fixture shall not exceed 122°F (50°C).

Light Output

Asymmetric series 2.0 is available with four lumen outputs for white light only. Refer to light output tables for footcandle values at various distances. All values below represent the initial raw lumens of the LED. IES format photometry of Lighting Facts labels represent actual light output measured in lumens and candle power. Light Output losses include optical, thermal and power supply inefficiencies. IES LM-79 format files may be obtained from the factory or downloaded from www.iolighting.com. All products have a CRI greater than 80. Results are typical measurements.

>> 2-step MacAdam Binning.

| | Standard Output | Mid Output | Very High Output | V2HO |
|--------------------|-----------------|------------|------------------|------------|
| INITIAL LUMENS | | | | |
| 2700K White: | 252 lms/ft | 420 lms/ft | 504 lms/ft | 785 lms/ft |
| 3000K White: | 264 lms/ft | 440 lms/ft | 528 lms/ft | 823 lms/ft |
| 3500K White: | 271 lms/ft | 452 lms/ft | 542 lms/ft | 845 lms/ft |
| 4000K White: | 276 lms/ft | 460 lms/ft | 552 lms/ft | 860 lms/ft |
| POWER CONSUMPTION* | | | | |
| | 3.52 w/ft | 5.28 w/ft | 7.39 w/ft | 10.52 w/ft |

Non-standard color temperatures available as a custom offering for a modest additional cost and lead-time.

* Power Consumption does not include power supply losses.

Construction

Heavy-duty aluminum housing provides required thermal management. Precision optics are composed of a customized acrylic material offering excellent light transmission and UV stability. High strength adhesive bonds the housing and patented optical assembly. Exterior rated fixtures are sealed for life, while interior rated fixtures are designed with a quick disconnect to enable the printed circuit board to be changed in the field.

Mounting Options

series 2.0 may be surface mounted, side surface mounted or surface mounted with field adjustability and lockable aiming.

Electrical

4'-0", 14 AWG UV rated electrical feed is side mounted to enable continuous row mounting. For detailed information regarding remote distance limitations, power supply options, and dimming options consult the **io** website (www.iolighting.com) or an **io** representative.

DRIVER REMOTE DISTANCE

46'-0" (14.0m) w/14AWG
71'-0" (21.6m) w/12AWG
120'-0" (36.6m) w/10AWG

Finish

Anodized aluminum finish is standard. Custom finishes may be available upon request.



All results, except LED Lumen Maintenance, are according to IESNA LM-79-2008: Approved Method for the Electrical and Photometric Testing of Solid-State Lighting. The U.S. Department of Energy (DOE) verifies product test data and results.

** See www.lightingfacts.com/products for details.

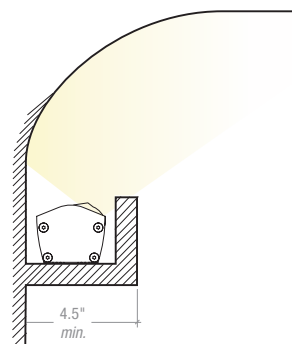
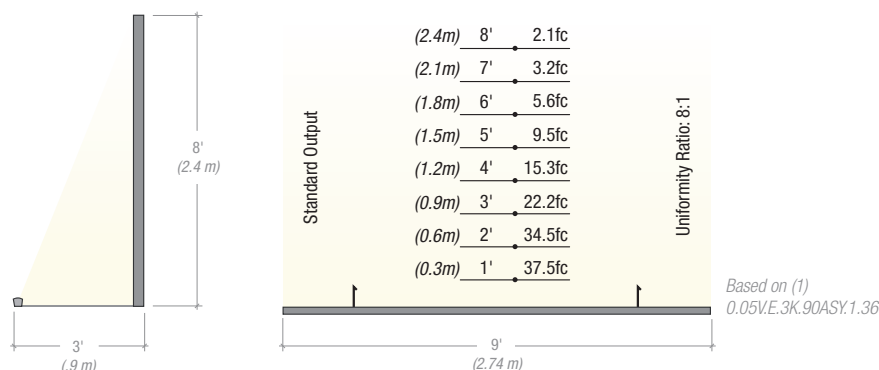
Registration Number: PNE4-DZAREM (7/24/2013)
Model Number: 0.05V2.1.3K.90ASYM.1.36
Type: Other

Label references 36" **line 2.0** asymmetric fixture in V2HO 3000K. Lighting Facts for additional beam spreads and light output levels may be obtained from **io** Lighting.

SIGN LIGHTING / BUILDING FLOOD LIGHTING (3000K WHITE)

EXTERIOR COVE DETAILS (i.e., canopies)

Applications / Light Output



LIGHT OUTPUT CONVERSION TABLE

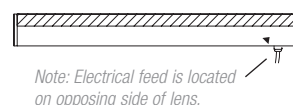
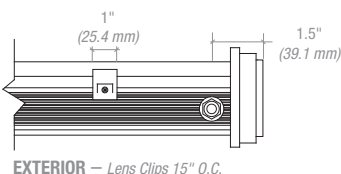
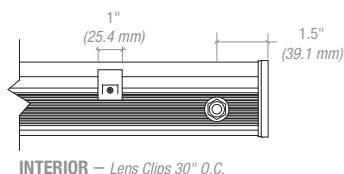
| | Standard Output | High Output | Very High Output | V2H0 |
|-------------|---------------------|---------------------|---------------------|---------------------|
| 2700K White | 0.44 ⁽¹⁾ | 0.72 ⁽¹⁾ | 0.95 ⁽¹⁾ | 1.40 ⁽¹⁾ |
| 3000K White | 0.47 ⁽¹⁾ | 0.75 ⁽¹⁾ | 1.00 ⁽¹⁾ | 1.47 ⁽¹⁾ |
| 3500K White | 0.48 ⁽¹⁾ | 0.77 ⁽¹⁾ | 1.03 ⁽¹⁾ | 1.51 ⁽¹⁾ |
| 4000K White | 0.47 ⁽¹⁾ | 0.75 ⁽¹⁾ | 1.00 ⁽¹⁾ | 1.47 ⁽¹⁾ |

Visit www.iolighting.com or contact an *io* representative for IES format photometrics.

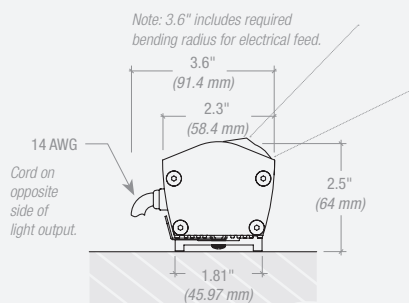


line series 2.0 is UL Listed for wet locations. It is not rated for submersible applications. line 2.0 should not be mounted in conditions where there is any standing water whatsoever.

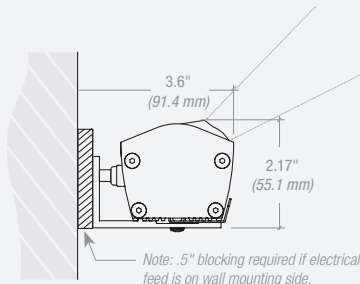
End Cap Detail



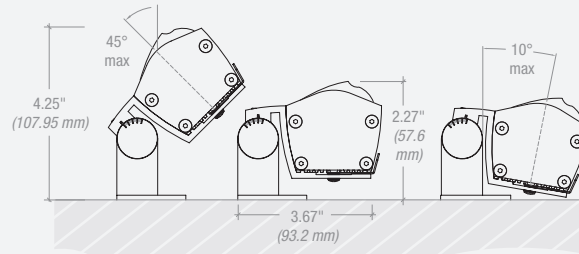
Mounting Options



100 Surface (io part #: LA.BK.SURFMT)



101 Side surface (io part #: LA.BK.WALLMT)



102 Field adjustable with lockable aiming (io part #: LA.BK.ADJMT)

| | | | | | | | | | |
|----|---|---|---|--------|---|---|---|---|---|
| 0 | 1 | 2 | 3 | 4 | 5 | 6 | 7 | 8 | 9 |
| io | | | | 90ASYM | | | | | |

Order Code

1. LIGHT OUTPUT

04 2.0 S0
05 2.0 H0
05V 2.0 VHO
05V2 2.0 V2H0

2. LOCATION

I Interior
E Exterior

3. COLOR

27K White 2700K⁽¹⁾
3K White 3000K⁽¹⁾
35K White 3500K⁽¹⁾
4K White 4000K⁽¹⁾
CC Custom Color⁽²⁾

4. DISTRIBUTION

90ASYM 90°ASYM

5. MOUNTING

100 Surface
101 Side surface
102 Field adjustable

6. FINISH

1 Anodized aluminum
2 Custom color

7. LENGTH

ACTUAL (in/mm)

18 18" (457.15mm)
36 36" (914.3mm)
54 54" (1371.6mm)
72 72" (1828.8mm)

8. VOLTAGE / DIMMING

SIDE FEED STANDARD

1 120v
2 277v
3 120v w/dim
4 277v w/dim
5 Other (International voltage)

9. SPECIFY DRIVER / DIMMING

Note: If not specified otherwise, *io* will supply 100 watt drivers. Download Power Supply specification sheet from www.iolighting.com.

Footnotes

1. White light variance between LEDs is equal to or better than 3-step MacAdam Binning.
2. Non-standard color temperature and CRI are available. Consult factory for availability.



YouTube

line 2.0 applications
youtube.com/iolighting