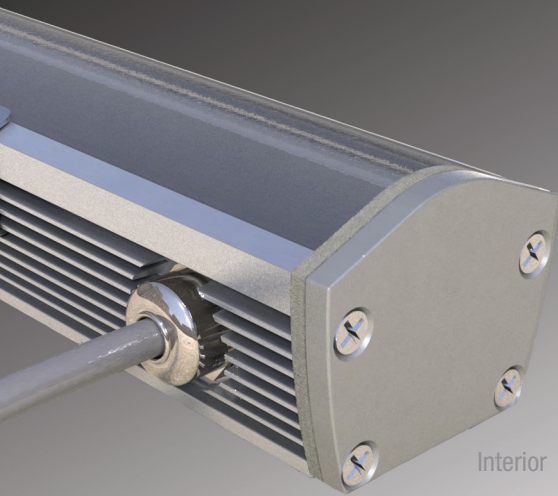


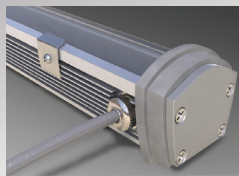
line™ 2.0

INTERIOR/EXTERIOR
APPLICATIONS

SYMMETRIC



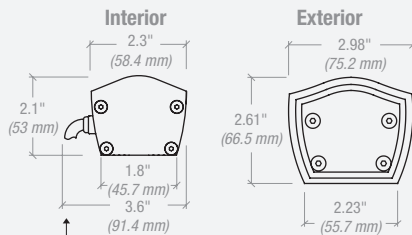
Interior



Exterior

5-year warranty

Dimensions



Dimension includes electrical feed and wire bending radius.

LED lighting facts®
A Program of the U.S. DOE

Light Output (Lumens)	1511
Watts	34
Lumens per Watt (Efficacy)	44
Color Accuracy Color Rendering Index (CRI)	85
Light Color Correlated Color Temperature (CCT)	2974 (Warm White)
Warranty**	Yes

2700K 3000K 4500K 6500K

All results, except LED Lumen Maintenance, are according to IESNA LM-79-2008:
Approved Method for the Electrical and Photometric Testing of Solid-State Lighting.
The U.S. Department of Energy (DOE) verifies product test data and results.

** See www.lightingfacts.com/products for details.

Registration Number: PNE4-INTREJ (7/12/2013)
Model Number: 0.05V2.1.3K.05.1.36
Type: Other

Label references 36" line 2.0 symmetric fixture with a 5° beam spread in V2HO 3000K. Lighting Facts for additional beam spreads and light output levels may be obtained from **io** Lighting.

Application

io Lighting's **line series 2.0** is approximately 2"x 2" in cross section, which allows for luminous accents to be delivered from "tight" architectural details. This low voltage linear luminaire may be specified for interior or exterior applications. Nominal lengths include 18", 36", 54" and 72". Precise beam spreads of 5°, 10°, 30°, 60° and 90° along the perpendicular axis of the fixture are well suited for accent or general illumination. **io**'s proprietary "grazing" allows the luminaire to be placed right next to a vertical surface and wash it uniformly. Individual units may be placed end to end to create continuous rows without obvious shadows between fixtures. **series 2.0**'s patented optical assembly is designed to practically eliminate stray light, making it perfect for applications where light pollution and/or light trespass are important design considerations.

Projected average rated life is 50,000 hours at 70% of lamp lumen output. Ambient temperature surrounding the fixture shall not exceed 122°F (50°C).

Light Output

series 2.0 is available with four lumen outputs for white light only. Refer to light output tables for footcandle values at various distances. All values below represent the initial raw lumens of the LED. IES format photometry of Lighting Facts labels represent actual light output measured in lumens and candle power. Light Output losses include optical, thermal and power supply inefficiencies. IES LM-79 format files may be obtained from the factory or downloaded from www.iolighting.com. All products have a CRI greater than 80. Results are typical measurements.

>> 2-step MacAdam Binning.

	Standard Output	Mid Output	Very High Output	V2HO
INITIAL LUMENS				
2700K White:	267 lms/ft	445 lms/ft	534 lms/ft	785 lms/ft
3000K White:	280 lms/ft	466 lms/ft	560 lms/ft	823 lms/ft
3500K White:	287 lms/ft	479 lms/ft	575 lms/ft	845 lms/ft
4000K White:	290 lms/ft	488 lms/ft	585 lms/ft	860 lms/ft
POWER CONSUMPTION*				
	3.39 w/ft	5.09 w/ft	7.12 w/ft	10.52 w/ft

Non-standard color temperatures available as a custom offering for a modest additional cost and lead-time.

* Power Consumption does not include power supply losses.

Construction

Heavy-duty aluminum housing provides required thermal management. Precision optics are composed of a customized acrylic material offering excellent light transmission and UV stability. High strength adhesive bonds the housing and patented optical assembly. Fabrication methods differ for each application. Exterior rated fixtures are sealed for life while interior rated fixtures are designed with a quick disconnect to enable the printed circuit board to be changed in the field. Interior fixtures may be sent back to the factory to change printed circuit board.

Mounting Options

series 2.0 may be surface mounted, side surface mounted or surface mounted with field adjustability and lockable aiming. Alternate mounting brackets available upon request. Consult factory for details.

Electrical

4'-0", 14 AWG UV rated electrical feed is side mounted to enable continuous row mounting. For detailed information regarding remote distance limitations, power supply options, and dimming options consult the **io** website (www.iolighting.com) or an **io** representative.

DRIVER REMOTE DISTANCE

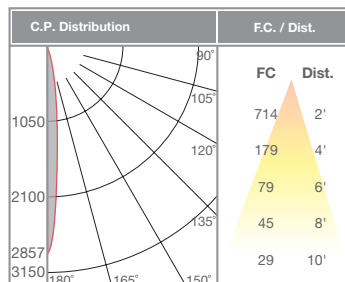
46'-0" (14.0m) w/14AWG
71'-0" (21.6m) w/12AWG
120'-0" (36.6m) w/10AWG

Finish

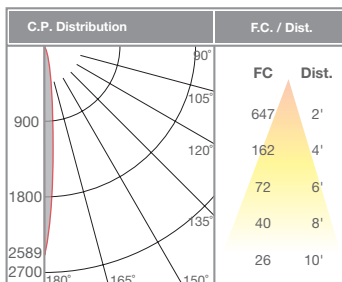
Anodized aluminum finish is standard. Custom finishes may be available upon request.

Light Output / Distributions

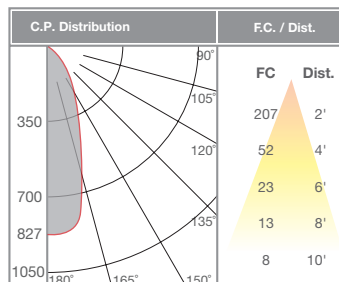
36" 3KV2HO 5 DEGREE*



36" 3KV2HO 10 DEGREE*

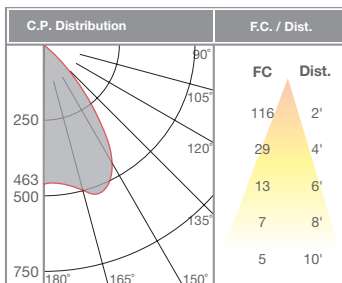


36" 3KV2HO 30 DEGREE*

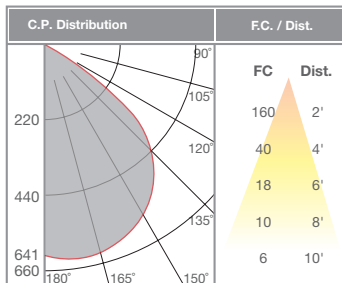


line series 2.0 is UL listed for wet locations. It is not rated for submersible applications. line 2.0 should not be mounted in conditions where there is any standing water whatsoever.

36" 3KV2HO 60 DEGREE*



36" 3KV2HO 90 DEGREE*



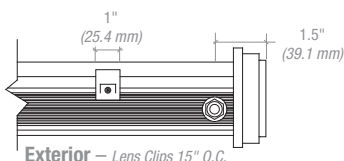
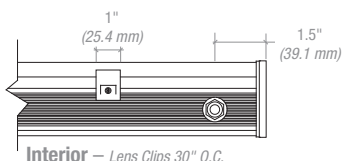
LIGHT OUTPUT CONVERSION TABLE

White	Standard Output	High Output	Very High Output	V2HO
2700K	0.44 ⁽¹⁾	0.72 ⁽¹⁾	0.95 ⁽¹⁾	1.40 ⁽¹⁾
3000K	0.47 ⁽¹⁾	0.75 ⁽¹⁾	1.00 ⁽¹⁾	1.47 ⁽¹⁾
3500K	0.48 ⁽¹⁾	0.77 ⁽¹⁾	1.03 ⁽¹⁾	1.51 ⁽¹⁾
4000K	0.47 ⁽¹⁾	0.75 ⁽¹⁾	1.00 ⁽¹⁾	1.47 ⁽¹⁾

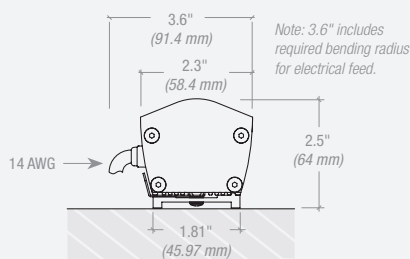
Visit www.iolighting.com or contact an io representative for IES format photometrics.

* Note: Light output / distributions based on IES file

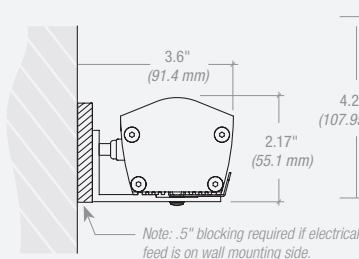
End Cap Detail



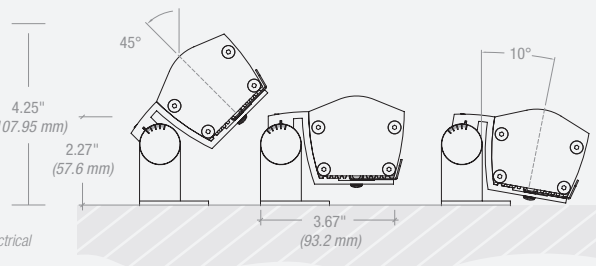
Mounting Options



100 Surface (io part #: LA.BK.SURFMT)



101 Side surface (io part #: LA.BK.WALLMT)



102 Field adjustable with lockable aiming (io part #: LA.BK.ADJMT)

Order Code

0	1	2	3	4	5	6	7	8	9	10
io	1	2	3	4	5	6	7	8	9	10
1. LIGHT OUTPUT	4. DISTRIBUTION	7. LENGTH	9. SPECIFY DRIVER / DIMMING							
04 2.0 S0	5 5°	ACTUAL (in/mm)	Note: If not specified otherwise, io will supply 100 watt drivers. Download Power Supply specification sheet from www.iolighting.com .							
05 2.0 HO	10 10°	18 18" (17.71"/449.83mm)								
05V 2.0 VHO	30 30°	36 36" (34.71"/881.63mm)								
05V2 2.0 V2HO	60 60°	54 54" (51.71"/1313.43mm)								
	90SYM 90° SYM	72 72" (68.71"/1745.23mm)								
2. LOCATION	Note: Grazing already included in optics	8. VOLTAGE / DIMMING								
I Interior	5. MOUNTING	SIDE FEED STANDARD								
E Exterior	100 Surface	1 120v								
3. COLOR	101 Side surface	2 277v								
27K White 2700K ⁽¹⁾	102 Field adjustable	3 120v w/dim								
3K White 3000K ⁽¹⁾	6. FINISH	4 277v w/dim								
35K White 3500K ⁽¹⁾	1 Anodized aluminum	5 Other (International voltage)								
4K White 4000K ⁽¹⁾	2 Custom color									
CC Custom Color ⁽²⁾										

Footnotes

Consult factory for other CCT options.
1. White light variance between LEDs is equal to or better than 3-step MacAdam Binning.
2. Non-standard color temperature and CRI are available. Consult factory for availability.



YouTube

line 2.0 applications
youtube.com/iolighting