

LumaWatt Pro

powered by
Enlighted



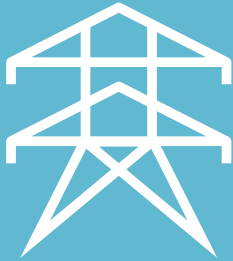
Powering Business Worldwide



EAT•N

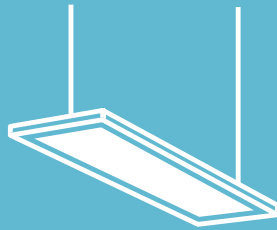
Powering Business Worldwide

LumaWatt Pro powered by Enlighted



EATON POWER

Unparalleled knowledge
of electrical
power management



LIGHTING

Advanced LED fixtures



CONNECTIVITY

Communications &
sensing technology
Physical devices
& controllers



SOFTWARE

Software applications
Data accumulation
& analysis

A lighting system that transforms into an enterprise network

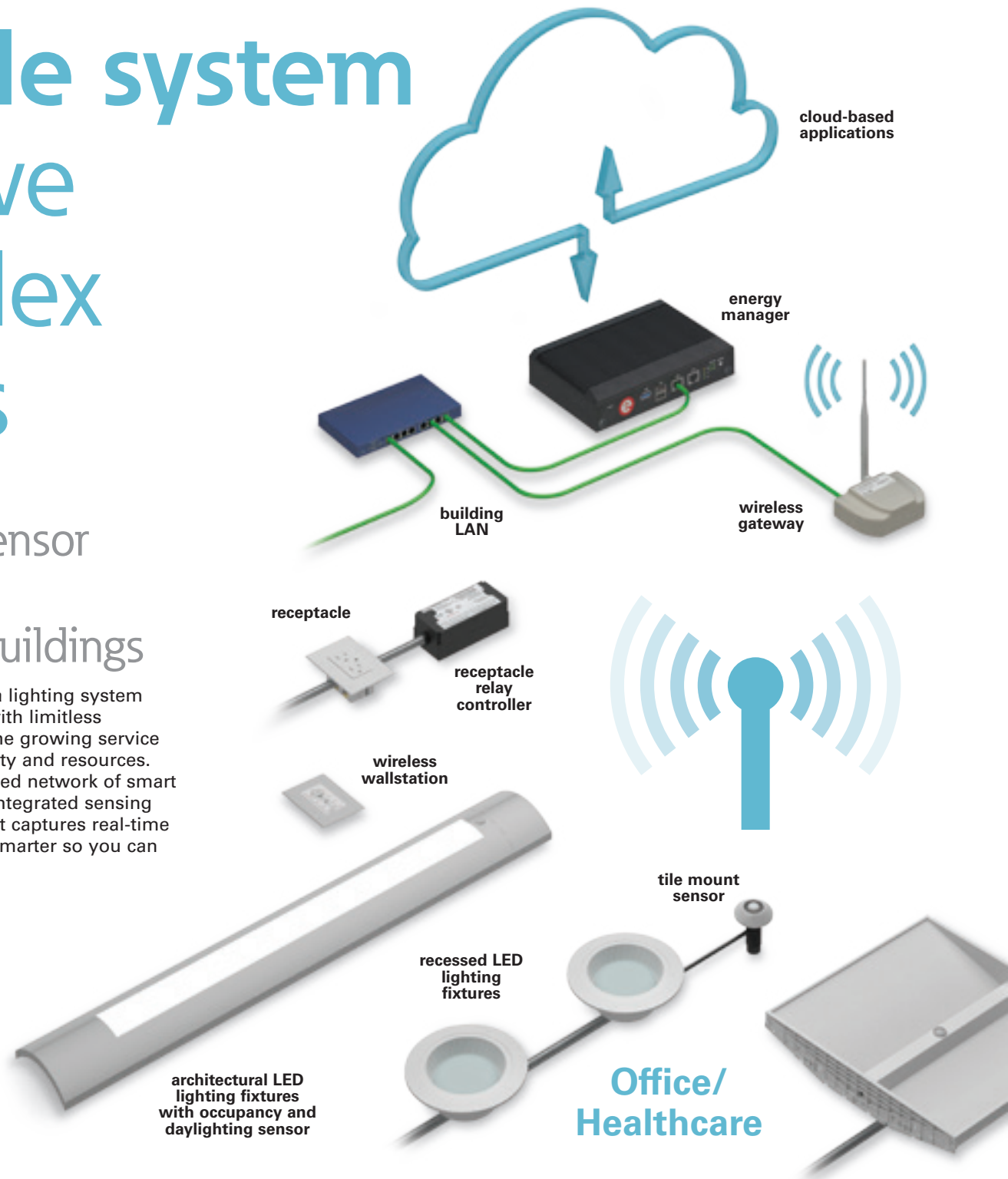
Eaton's LumaWatt Pro powered by Enlighted is the connected lighting solution that combines a broad selection of energy-efficient LED luminaires with a powerful wireless sensor system. The sensor controls the lighting system in compliance with the latest energy codes and collects valuable data about building performance and use. Software applications turn the granular data into information through energy dashboards and specialized apps that make it simple and help optimize the use of building resources, beyond lighting.

Connected Lighting simplified by Eaton

Simple system to solve complex needs

A wireless sensor platform for connected buildings

LumaWatt Pro transforms a lighting system into an IoT infrastructure with limitless potential to keep up with the growing service demands of people, property and resources. LumaWatt Pro is a distributed network of smart LED lighting fixtures with integrated sensing and beacon technology that captures real-time data; making your facility smarter so you can make smarter decisions.



Better data. Better decisions.

Beyond brilliant:

A high-efficiency lighting system that doubles as an enterprise network.

- LED lighting and advanced lighting controls bring an IoT platform into your buildings
- Create value by making operational decisions through real-time data and analytics
- Simple and scalable way to manage one system for all your needs
- Safety, security and productivity improvements through value-added applications



Industrial

LED round high-bay with occupancy and daylighting sensor

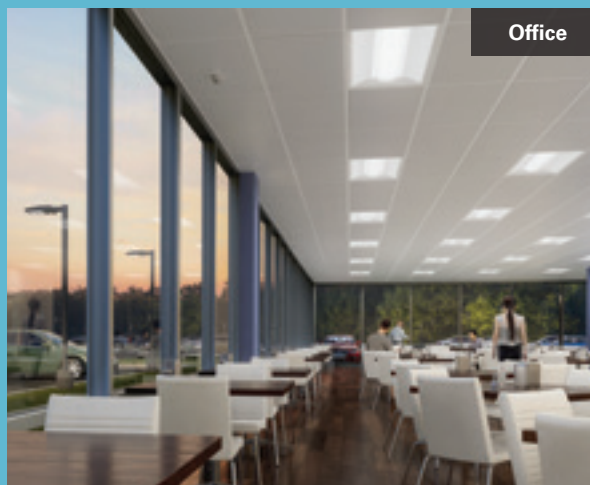
Outdoor



LED area, site and roadway lighting with occupancy and daylighting sensor

For a complete list of compatible products, see:
www.eaton.com/LumaWattPro

ambient LED lighting fixtures with occupancy and daylighting sensor



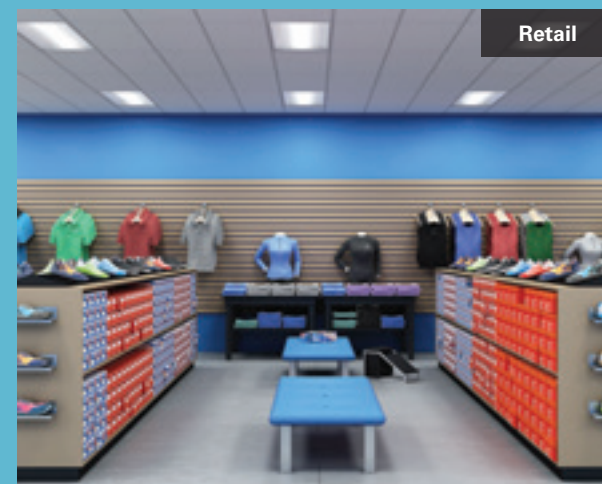
Office



Industrial



Healthcare



Retail



Technology

Harness the power of connected lighting

The LumaWatt Pro system, complete with LED luminaires, integrated wireless sensors, and controls, is the new standard in performance. Leveraging an advanced IoT platform, the system collects real-time data to enable energy efficiency, smarter space planning, enhanced safety and productivity, and more. And, the potential for future applications is endless.

Efficient

LumaWatt Pro can reduce lighting energy costs by 70%, providing high-efficiency lighting control strategies.

Insightful

LumaWatt Pro provides dashboards of real-time lighting energy usage, projected energy savings, and lighting system health.

Equipped

LumaWatt Pro transforms a lighting system into an IoT infrastructure with limitless potential to harness and leverage building data.

INtuitive.
INtelligent.
INtegrated.

Save energy and gain the power of information





Solutions

An investment that pays for itself

With the LumaWatt Pro Connected Lighting System powered by Enlighted, you can expect to save up to 70% of your lighting energy costs. Updating to high efficiency LED lighting fixtures with LumaWatt Pro's integrated sensors can mean hundreds of thousands of dollars in savings per year.



Payback period as little as 18 months:
installation and services
paid for out of
energy cost savings

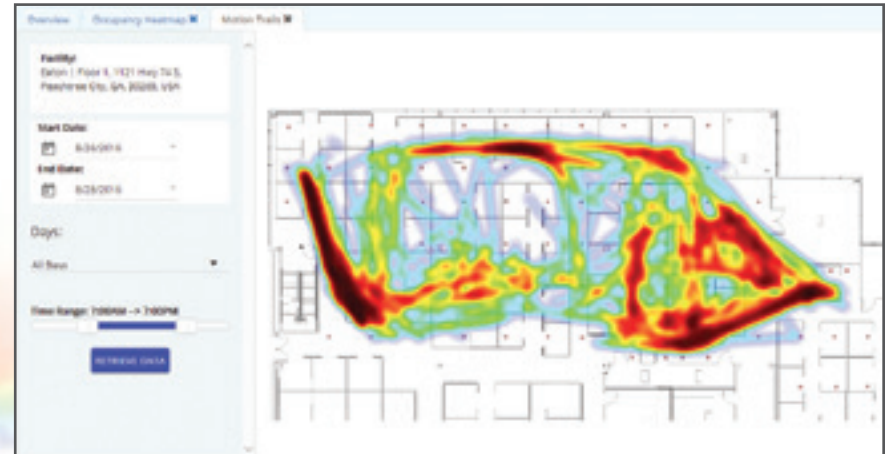
Gain the power of information

LumaWatt Pro delivers powerful information and dashboards, right to your browser. See your real-time energy usage, projected energy savings, and system health reports, and get a more comprehensive understanding of total lighting systems performance.

- Occupancy/vacancy-based control
- Daylight-responsive control
- Schedule-based control
- Task tuning
- Scene-based control
- Receptacle control
- Demand response
- BMS integration

Make better decisions with visual insights

LumaWatt Pro's Space application provides actionable insight into building usage, with detailed occupancy views and graphs leveraging LumaWatt Pro's Sensor Network data. Seeing detailed, non-intrusive views of workspaces and employee movement allows you to increase productivity, optimize workspaces, and drive cost-saving initiatives.



space

Motion trails shows how people move through a space over time which can help facility managers reduce the number of congested areas

Heat maps offer accurate insight into building usage, detailed occupancy views and patterns using the data collected

The utilization rate for leased spaces is less than 50%



Are monthly heating and cooling cost rising?

The LumaWatt Pro system can save you energy by enabling demand-driven heating or cooling. LumaWatt Pro's Aire integrates with your building management system (BMS) by using the data collected by LumaWatt Pro's advanced distributed sensor network and occupancy application. Aire enables facility managers to direct cooling or heating in real-time to the space where occupants are working.



Nurses lose
up to 15%
productivity
searching for
equipment

Losing time looking for equipment?

With LumaWatt Pro's asset tracking feature, the first place you look will be the last. Save time looking for misplaced equipment using Bluetooth connection points, which locate items with data tags attached. The system will reveal its exact whereabouts through a cloud-based app.

The distributed network of smart LED lighting, gives the ability for reliable tracking, saving time looking for equipment.

One system. Multiple solutions.

LumaWatt Pro is completely connected, completely scalable, and completely smart. Leverage today's most advanced Internet of Things technology to convert your indoor and outdoor LED lighting system into a cost-saving machine that's painless to use and maintain.

Make better use of
building and parking resources
with LumaWatt Pro

Advanced controls

Deliver the right light at the right time

The LumaWatt Pro lighting system offers superior performance and eliminates energy waste by providing the right amount of light, at the right time, in the right place. Able to control the lighting system on a fixture-by-fixture basis, the integrated wireless sensors monitor the occupancy and available daylight of the surrounding environment, and execute the programmed schedule, ensuring the lights are on when needed, at the correct level, and off whenever possible.



Fixture-Integrated Sensor

Sensors are factory-installed in each luminaire. Just install the LED fixture at the jobsite.



Wireless Gateway

The gateway communicates wirelessly to sensors, wallstations, and receptacle/relay controllers.



Wireless Wallstation

The wallstation communicates wirelessly with local fixture-integrated sensors to change light levels in the area using four, easy-to-understand buttons.



Wireless Receptacle/Relay Controller

Turn receptacles on and off in response to occupancy while reporting their usage.



Energy Manager

The Energy Manager configures and manages the behavior of the lighting system and transitions it to an enterprise network, sharing system data and offering insight into the use and status of building resources. It generates dashboards that detail energy use, energy savings, and lighting system health.

- Creates lighting control profiles
- Configurable role-based accounts
- Aggregates and manages data
- Optional email status alerts for system events
- Detailed reports on savings and maintenance needs
- Automatic, full backup to USB drive
- Standards-based communications
- Hardened, solid-state edge device
- Building system integration using BACNET
- Stores reported data for up to 36 months
- Local, browser-based user interface
- Flexible deployment

Lighting products

The LumaWatt Pro system is compatible with many LED fixtures. Indoors and outdoors, LumaWatt Pro integrated luminaires cover the entire building with one complete system.



**Metalux
SSLED**
Industrial LED
round high-bay

Ambient lighting



**Metalux
Encounter**
Recessed ambient
WaveStream LED



**Metalux
SkyRidge**
Recessed ambient
WaveStream LED



**Metalux
Cruze**
LED recessed ambient



**Metalux
Arcline**
Architectural recessed
ambient



**Metalux
FR**
LED recessed
ambient



**Metalux
GRLED**
LED recessed
ambient



**Metalux
WSL**
Linear surface / suspended series
WaveStream LED



**Metalux
SWLED**
LED surface, suspended or
wall mount luminaire



**Metalux
Industrial LED**
Industrial LED
linear bay



For a complete list of
compatible products, see:
www.eaton.com/LumaWattPro

Architectural lighting



**Neo-Ray
Covera**
WaveStream LED
suspended luminaire
with LuxWire™



**Neo-Ray
Converge**
WaveStream LED
suspended luminaire
with LuxWire™



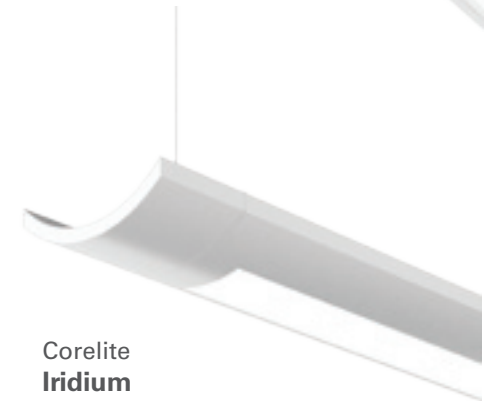
**Neo-Ray
Define**
LED linear recessed
luminaire



**Corelite
Bridge**
Architectural recessed
WaveStream LED



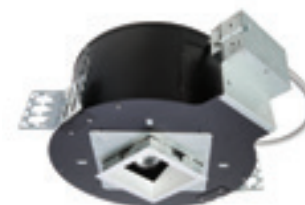
**Corelite
Divide**
Architectural recessed
WaveStream LED



**Corelite
Iridium**
Linear suspended
WaveStream LED



Recessed lighting



**Portfolio
LDSQA4A**
LED square adjustable
accent/slope



**Portfolio
LD4A and LDSQ4A**
Round and square
recessed downlight

For a complete list of compatible products, see: www.eaton.com/LumaWattPro



Outdoor lighting



McGraw-Edison
Galleon
Area, site
and roadway
LED luminaire



Lumark
Prevail
Area and site
LED luminaire



McGraw-Edison
Galleon Wall
Area and site
wall mount
LED luminaire



McGraw-Edison
Top Tier
Parking garage
and canopy
WaveStream LED luminaire



Lumark
Navion
Area, site and roadway
LED luminaire



Invue
Mesa
Decorative area
LED luminaire



McGraw-Edison
Valet
Parking garage
LED luminaire



Invue
Vision
Architectural area
LED luminaire

For a complete list of compatible products, see: www.eaton.com/LumaWattPro

Ready to get started?

Take your smart buildings to a whole new level of capabilities with
LumaWatt Pro Wireless Connected Lighting System powered by Enlighted.



Smart buildings of tomorrow – today.



We make connections work*
Connected Lighting simplified by Eaton

What is Connected Lighting?

Eaton's portfolio of connected lighting solutions leverages the real-estate of the physical light fixture to increase building, business and community operating efficiency through controls and data. With connected lighting solutions, we go beyond controlling light to solve higher complexity problems enabled by sensing and communication capabilities within the light fixture itself.

With innovation you can rely on, and connections you can build on; that's how Eaton makes connections work*

Lighting Product Lines

Halo
Halo Commercial
Portfolio
Iris
RSA
Metalux
Corelite
Neo-Ray
Fail-Safe
MWS
Ametrix
Shaper
io
Lumark
McGraw-Edison
Invue
Ephesus
Lumière
Streetworks
AtLite
Sure-Lites

Controls Product Lines

Greengate
iLumin
Zero 88
Fifth Light Technology
iLight (International Only)

Connected Lighting Systems

LumaWatt Pro
WaveLinx
Distributed Low-Voltage Power
ConnectWorks



Eaton
1121 Highway 74 South
Peachtree City, GA 30269
P: 770-486-4800
www.eaton.com/lighting

Canada Sales
5925 McLaughlin Road
Mississauga, Ontario L5R 1B8
P: 905-501-3000
F: 905-501-3172

© 2017 Eaton
All Rights Reserved
Printed in USA
Publication No. BR503010EN
May 2017

Eaton is a registered trademark.

All other trademarks are property of their respective owners.

Product availability, specifications, and compliances are subject to change without notice.