

Lighting BACnet/IP Interface

Overview

The LumaWatt Pro Lighting BACnet/IP interface enables seamless integration between the LumaWatt Pro lighting control network and any BACnet® compatible Building Management System. This feature is a license-enabled software available on the LumaWatt Pro Energy Manager servers.

Software

The LumaWatt Pro Lighting BACnet/IP interface shares lighting data with BACnet clients such as Building Management System (BMS). The BACnet/IP interface allows access to the lighting control features such as dimming, emergency overrides, and demand response. The BMS with BACnet/IP capability can smoothly integrate, monitor, manage, and control the LumaWatt Pro Lighting system through Group and Individual points.

Features

Area Points: Provides aggregate metering data and control points for a group of sensors. Bacnet can be requested in two ways, area or energy manager.

- **Area:** Provides Area-wide energy consumption, occupancy status, emergency override, and fixture outage count points
- **Energy Manager:** Provides Energy Manager-wide energy consumption, emergency override, and demand response points

Individual Points: Provides metering data and control points for individual devices such as a lighting fixture, node or plugload. Each provides the following individual points.

- **Lighting load:** Provides energy consumption, dim level, and outage status points for each fixture
- **Plugload:** Provides energy consumption and plugload emergency status points for each plugload

The data points are published over BACnet/IP server at every five to 15-minute intervals. Bacnet enablement of user interface will be completed and defined with onsite commissioning.



LumaWatt Pro Energy Manager



LumaWatt Pro Midrange Energy Manager



LumaWatt Pro Enterprise Energy Manager



Powering Business Worldwide

How to request the licensing?

Once requirements are understood, Eaton can help determine license requirements. The BACnet base license includes Energy Manager group points. Additional Group and Individual points must be purchased separately. The Energy Manager GUI allows you to configure the network, ports, and the base instance ID ranges for BACnet/IP. The total number of BACnet points supported depends on the type of hardware device.

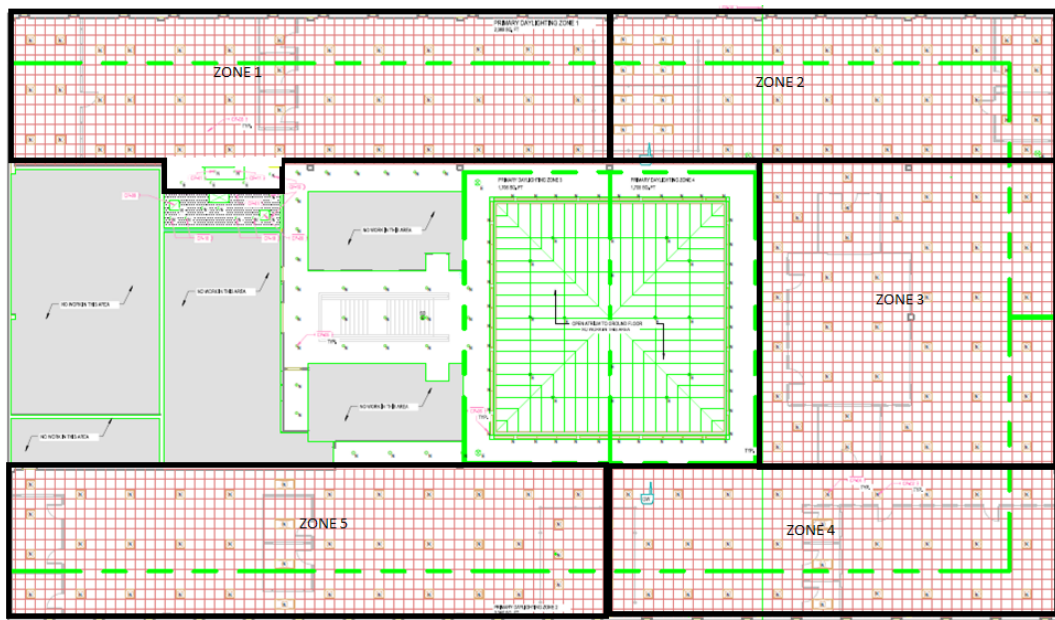
Deployment

The following four types of Enlighted Energy Managers are available.

- Energy Manager (EM): Manages up to 1500 sensors and 3,500 BACnet points
- Midrange Energy Manager: Controls up to 5000 sensors and 7,000 BACnet points
- Enterprise Energy Manager (EEM): Manages up to 10,000 sensors and 35,000 BACnet points

Refer to the corresponding Energy Manager Data Sheet or contact Enlighted Sales for details.

Example of a 5 Zone Area Purchased with Base License for Entire Space



Bachnet Catalog Logic for LumaWatt Pro Systems

Catalog	Description
LWP-NB-BS-01	LumaWatt Pro Bacnet Lighting Module Base License
LWP-NB-GP-01	LumaWatt Pro Bacnet per point license - Group level
LWP-NB-SP-01	LumaWatt Pro Bacnet per point license - Sensor level

Eaton
1121 Highway 74 South
Peachtree City, GA 30269
www.eaton.com/lightingsystems
For service or technical assistance:
1-800-553-3879

© 2017 Eaton
All Rights Reserved
Printed in USA
Publication No. TD620095EN
April 25, 2017