

LIGHTBAR™ TECHNOLOGY

ENERGY SAVINGS AND ENVIRONMENTAL STEWARDSHIP

The simplest and most effective way to reduce a lighting fixture's impact on the environment is to minimize its energy consumption. By incorporating Cooper Lighting's patented LED LightBAR™ technology, Ridgeview LED provides energy savings between 30-75% over standard HID sources.

LONG LIFE

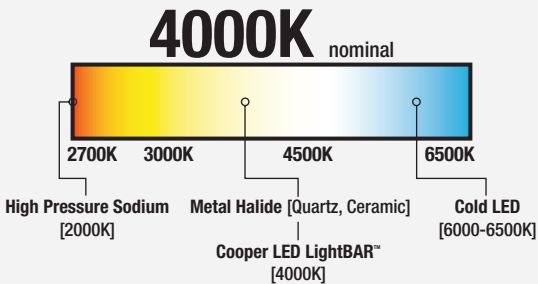
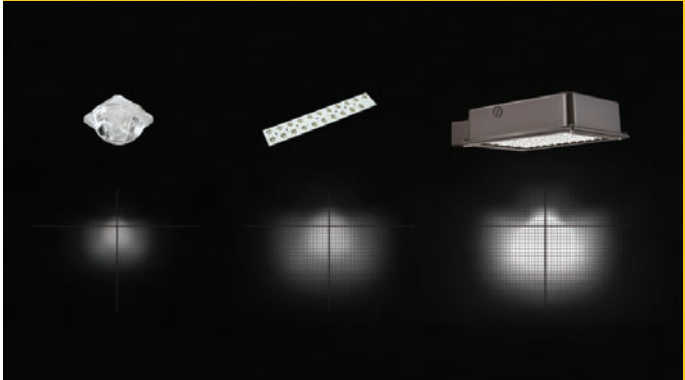
With a 50,000+ hour rated life at 70% lumen maintenance, Ridgeview LED operates six [6] times longer than traditional Metal Halide sources.



PATENTS PENDING

SCALABLE ILLUMINATION

WARM WHITE COLOR



Each patented LED LightBAR™ optic renders the entirety of the pattern. As the number of LightBAR™ elements increase so does the application illuminance, allowing lumen and energy output to be scaled and optimized per application. Obtrusive spill light and glare is replaced by uniform, application specific illumination.

Lighting Designers, Architects and Specifying Engineers have long preferred light sources which provide a balanced spectral power distribution and warm white light. Typical LED solutions standardize on a cold blue 6000-6500K correlated color temperature [CCT] to maximize lumen output. Ridgeview LED provides warm white light at a standard 4000K CCT with no sacrifice in lumen output.

AccuLED Optics™



SUPERIOR EFFICIENCY AND CONTROL

With efficiencies as high as 95%, patented AccuLED Optics™ systems are as much as 30% more efficient than traditional HID optical systems. Available in thirteen [13] beam distributions, AccuLED Optics™ systems provide the flexibility and performance required for any outdoor application.

RIDGEVIEW LED SITE

ORDERING INFORMATION

SAMPLE NUMBER: LDRV-T2-B02-E-DP

LAMP TYPE	SERIES	DISTRIBUTION ¹		NUMBER OF LIGHTBARS ^{2,3}	VOLTAGE	OPTIONS ⁵	COLOR ⁶	ACCESSORIES
LD=Solid State Light Emitting Diodes [LED]	RV=Ridgeview	T2=Type II T3=Type III T3S=Type III Short T4=Type IV 5MQ=Type V Square Medium 5WQ=Type V Square Wide 5XQ=Type V Square Extra Wide	RW=Rectangular Wide SL2=Type II w/Spill Control SL3=Type III w/Spill Control SL4=Type IV w/Spill Control SLL=90° Spill Light Eliminator Left SLR=90° Spill Light Eliminator Right	B01=[1] 21 LED LightBAR B02=[2] 21 LED LightBARS B03=[3] 21 LED LightBARS B04=[4] 21 LED LightBARS C01=[1] 7 LED LightBAR C02=[2] 7 LED LightBARS C03=[3] 7 LED LightBARS C04=[4] 7 LED LightBARS	E=Electronic [120-277V] 347=347V ⁴ 480=480V ⁴	[see below]	BZ=[Standard Color is Bronze] WH=White BK=Black AP=Grey DP=Dark Platinum GM=Graphite Metallic	[see below]

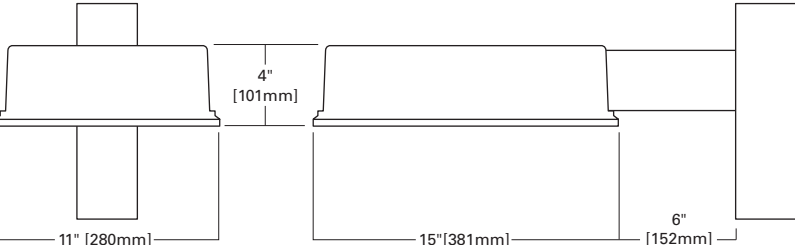
OPTIONS AND ACCESSORIES [Must be listed in the order shown and separated by a dash]

OPTIONS ⁵ WM=Wall Mount Arm and Mounting Plate ⁷ HA=50°C High Ambient Temperature Rating ⁸ L90=Optics Rotated Left 90° R90=Optics Rotated Right 90° PC=Button Type Photocontrol [specify voltage] ⁹ PER=NEMA Twistlock Photocontrol Receptacle 2L=Bi-Level Switching Capable ¹⁰ 7060=70 CRI / 6000K CCT ¹¹ 8030=80 CRI / 3000K CCT ¹¹ LCF=LightBAR Cover Plate Matches Housing Finish BBLEDCLD=UL924 LED Cold Battery Back-up [Specify Voltage] ¹² MS-LXX=Motion Sensor for On/Off Operation ¹³ MS/X-LXX=Motion Sensor for Bi-level Switching ¹⁴	ACCESSORIES ¹⁵ OA/RA1013=Shorting Cap OA/RA1014=Photoelectric Control, 120V NEMA Type OA/RA1016=Photoelectric Control, 105-285V NEMA Type OA/RA1027=Photoelectric Control, 480V NEMA Type OA/RA1201=Photoelectric Control, 347V NEMA Type MA1175-XX=Single Tenon Adapter for 3-1/2" O.D. Tenon MA1176-XX=2 @ 180° Tenon Adapter for 3-1/2" O.D. Tenon MA1177-XX=3 @ 120° Tenon Adapter for 3-1/2" O.D. Tenon MA1178-XX=4 @ 90° Tenon Adapter for 3-1/2" O.D. Tenon MA1179-XX=2 @ 90° Tenon Adapter for 3-1/2" O.D. Tenon MA1180-XX=2 @ 120° Tenon Adapter for 3-1/2" O.D. Tenon MA1181-XX=3 @ 90° Tenon Adapter for 3-1/2" O.D. Tenon	MA1182-XX =Single Tenon Adapter for 2-3/8" O.D. Tenon MA1183-XX =2 @ 180° Tenon Adapter for 2-3/8" O.D. Tenon MA1184-XX =3 @ 120° Tenon Adapter for 2-3/8" O.D. Tenon MA1185-XX =4 @ 90° Tenon Adapter for 2-3/8" O.D. Tenon MA1186-XX =2 @ 90° Tenon Adapter for 2-3/8" O.D. Tenon MA1187-XX =3 @ 90° Tenon Adapter for 2-3/8" O.D. Tenon RV/WG =Field Installed Wire Guard MA1300-XX =Wall Mount Plate [R Drill Pattern] MA1305-XX =R to M Square Pole Adapter MA1306-XX =R to M Round Pole Adapter MA1253 =10kV Circuit Module Replacement
--	---	--

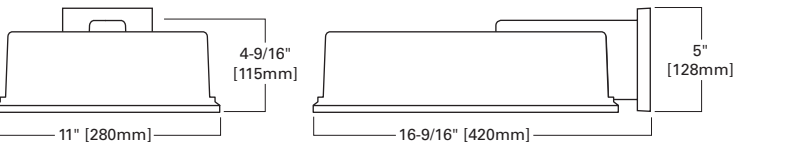
NOTES: 1 6" Arm and round pole adapter included with fixture. 2 21 LED LightBAR powered at 350mA, 7 LED LightBAR powered at 1 Amp. 3 Lumen values based upon 4000°K CCT, 350mA or 1 Amp drive current, 25°C ambient operating temperature. 4 Not available with 2L. Bi-level Switching Option. 5 Add as suffix. 6 Standard housing color is bronze. 7 Wall mount arm and mounting plate included with fixture. 8 HA not available with BBLEDCLD option. Limit 3 BARs with HA option. 9 Specify voltage. Available in 120, 277, 208, 240V. 10 Consult factory for configurations. Not available with 347 or 480V. 11 Consult factory for lead time and lumen multiplier. 12 Specify 120 or 277V. Available with B01 or C01 configurations only. 25°C ambient operating temperature. 13 Sensor housed in external box mounted to the luminaire. Replace XX with mounting height in feet for proper lens selection (i.e., MS-L20). Consult factory for additional information. 14 Motion sensor for bi-level switching. Sensor housed in external box mounted to the luminaire. Available in B02-B04 and C02-C04 configurations. Replace X with number of bars operating in low output mode and replace XX with fixture mounting height for proper lens selection (i.e., MS/3-L20). Consult factory for additional information. 15 Order separately. Replace XX with color designation. 16 Specifications and dimensions subject to change without notice.

DIMENSIONS

Pole Mount

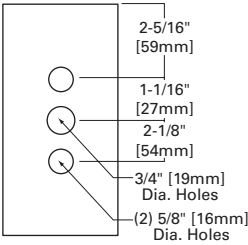


Wall Mount

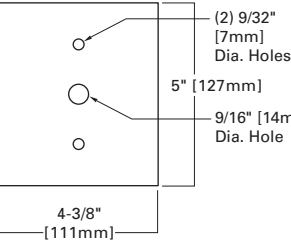


DRILLING PATTERNS

Type "R"



Wall Mount [WM]



CERTIFICATIONS

UL and cUL Listed
IP65 Fixture Rating
IP66 LightBARS
LM79 / LM80 Compliant
3G Vibration Rated
ARRA Compliant
ISO 9001

ENERGY DATA

Electronic LED Driver
>0.9 Power Factor
<20% Total Harmonic Distortion
120-277V/50 & 60Hz, 347V/60Hz, 480V/60Hz
40°C Ambient Temperature Rating
50°C [Optional] Ambient Temperature Rating
-30°C Minimum Temperature

AMBIENT DATA

Ambient Temperature	Lumen Multiplier
10°C	1.04
15°C	1.03
25°C	1.00
40°C	0.96
50°C	0.92

EPA

Effective Projected Area [sq. ft.]	w/o Arm	w/ Arm
1-4 Bars	0.48	0.67

SHIPPING DATA

Approximate Net Weight	1-4 Bars
	12.5 [5.67 kgs.]



25% PCRF

Cooper Lighting, Lumark, Ridgeview, SustainabLEDesign, LightBAR and AccuLED Optics are valuable trademarks of Cooper Industries in the United States and other countries. You are not permitted to use the Cooper Trademarks without the prior written consent of Cooper Industries.

Cooper Lighting, LLC
1121 Hwy 74 South
Peachtree City, Georgia 30269
P: 770-486-4800
www.cooperlighting.com

ADH111431

Printed in USA

COOPER Lighting

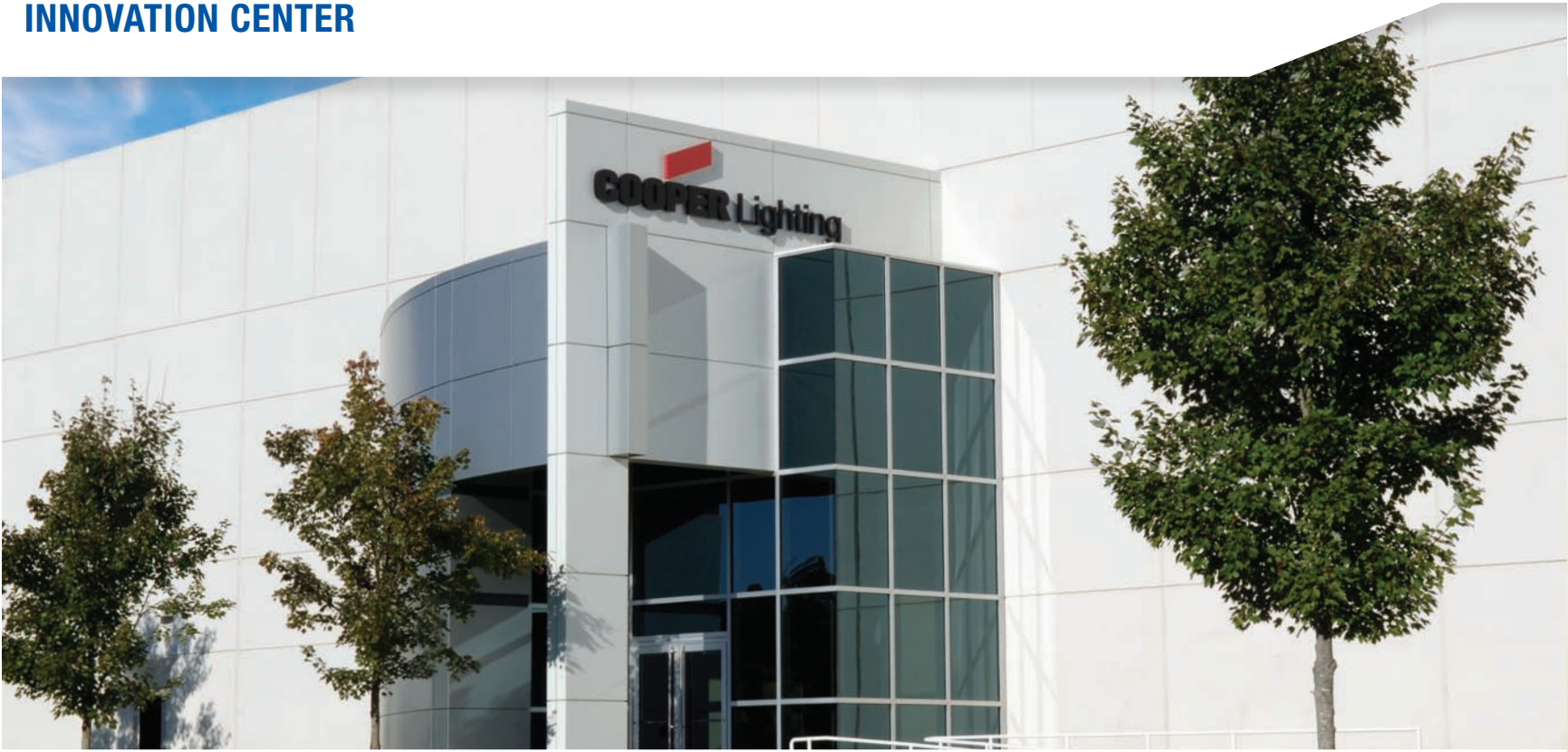
LUMARK



Sustainable Design

Ridgeview LED Site
Area/Roadway Luminaire

COOPER Lighting



INNOVATION IN ACTION



The Cooper name has stood for innovation, service and expertise for over 175 years. Today, Cooper Lighting's LED Innovation Center is home to the design, validation and manufacturing of proprietary LED technologies. Through changing times and technologies, Cooper answers the call to provide relevant, industry-leading solutions to evolving market needs.

BEST-IN-CLASS DESIGN AND RELIABILITY

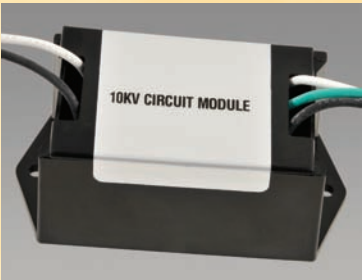


Precision design practices and rigorous reliability testing result in dependable luminaires that thrive in outdoor environments. Ridgeview LED is rated for operation in -30°C to 40°C ambient environments [for 50°C ambient, specify HA option], comes equipped with 10kV transient surge protection and is backed by a five-year warranty from a world class manufacturer.

FEATURES AND BENEFITS

CONSTRUCTION + FINISH

Low profile, die-cast aluminum housing finished in a 5-stage Super TGIC polyester powder coat paint. Six [6] standard colors. RAL and custom color matches available.



SURGE SUPPRESSION

Ridgeview LED is shipped standard with a replaceable circuit module [MA1253] incorporating internal fusing and MOV's designed to withstand 10kV of transient line surge.



ACCUED OPTICS™

AccuLED Optics™ provide shaped distributions and scalability to meet exacting application requirements. Ridgeview LED is offered in 1-4 LightBAR™ configurations with a choice of thirteen [13] high efficiency optical systems including a family of spill light eliminator optics [SL] that drastically reduce spill light behind the luminaire. Optional factory-set optic rotation [L90 or R90] allows uniform product orientation on the site independent of optical orientation. LightBARs feature an IP66 enclosure rating.

POWER AND LUMENS BY NUMBER OF LIGHTBARS

Number of LightBARs	DISTRIBUTION												
	Power [Watts]	T2	T3	T3S	T4	SL2	SL3	SL4	5MQ	5WQ	5XQ	RW	SLR/SLL
7 LED LIGHTBAR													
C01	27	1,886	1,858	1,796	1,842	1,869	1,895	1,842	1,959	1,929	1,965	1,866	1,742
C02	54	3,743	3,687	3,564	3,655	3,708	3,761	3,655	3,886	3,827	3,899	3,702	3,457
C03	77	5,514	5,431	5,251	5,385	5,463	5,540	5,384	5,725	5,638	5,744	5,454	5,093
C04	101	7,334	7,224	6,984	7,163	7,266	7,369	7,161	7,615	7,499	7,640	7,254	6,774
21 LED LIGHTBAR													
B01	27	2,320	2,285	2,210	2,266	2,299	2,331	2,266	2,409	2,373	2,417	2,295	2,143
B02	51	4,604	4,534	4,384	4,496	4,561	4,625	4,495	4,780	4,707	4,796	4,554	4,252
B03	73	6,782	6,680	6,459	6,624	6,719	6,814	6,622	7,042	6,935	7,065	6,708	6,264
B04	95	9,021	8,885	8,591	8,810	8,938	9,064	8,808	9,366	9,224	9,397	8,923	8,332



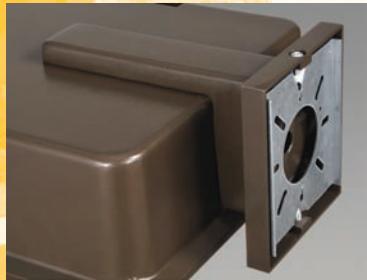
ENERGY SAVING SOLUTIONS

Ridgeview LED provides up to 75% energy savings over traditional sources when utilizing equivalent LED LightBAR configurations in conjunction with optional bi-level switching [2L]. LightBAR™ additive design technology allows for the reduction of luminaire power consumption without impacting the overall shape or directionality of the distribution, closely maintaining lighting uniformity levels.



POLE MOUNT

Ridgeview LED is shipped complete with a 6" square pole arm and round pole adapter allowing for consolidated product arrival to the site. Extruded arm features internal bolt guides for easy positioning of fixture during installation to pole.



WALL MOUNT

Wall mount configuration offers seamless integration of luminaire to wall. Shipped installed with wall mount arm, covered wall plate and hardware.