

# INSTALLATION INSTRUCTIONS

PRODUCT: GALLERIA  
SMALL - MEDIUM - LARGE  
IMI-383

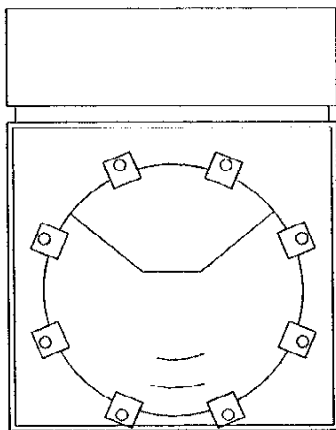
IMPORTANT: READ CAREFULLY BEFORE INSTALLING FIXTURE. RETAIN FOR FUTURE REFERENCE.

GENERAL: UPON RECEIPT OF FIXTURE THOROUGHLY INSPECT FOR ANY FREIGHT DAMAGE, WHICH SHOULD BE BROUGHT TO THE ATTENTION OF THE DELIVERING CARRIER. COMPARE THE CATALOG DESCRIPTION LISTED ON THE PACKING SLIP WITH THE FIXTURE LABEL ON THE HOUSING TO ASSURE YOU HAVE RECEIVED THE CORRECT MERCHANDISE.

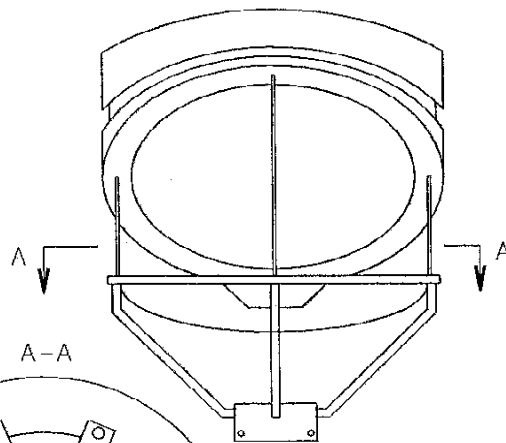
SAFETY: THIS FIXTURE MUST BE WIRED IN ACCORDANCE WITH THE NATIONAL ELECTRICAL CODE AND APPLICABLE LOCAL CODES AND ORDINANCES. PROPER GROUNDING IS REQUIRED TO INSURE PERSONAL SAFETY. CAREFULLY OBSERVE GROUNDING PROCEDURE UNDER INSTALLATION SECTION. ALL WORK SHOULD BE DONE BY A QUALIFIED ELECTRICIAN.

**WARNING:** MAKE CERTAIN POWER IS OFF BEFORE STARTING INSTALLATION OR ATTEMPTING ANY MAINTENANCE.

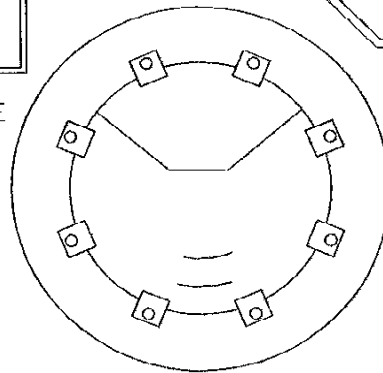
## HOUSE SHIELD INSTALLATION



ARM MOUNT FIXTURE  
WITH DOOR OPEN



FITTER MOUNT FIXTURE  
WITH HOUSING OPEN



DOOR REMOVED FOR CLARITY

CAUTION: TO AVOID POSSIBLE ELECTRICAL SHOCK, BE SURE THAT POWER SUPPLY IS TURNED OFF BEFORE INSTALLING OR SERVICING THIS LUMINAIRE.

STEP 1: LOOSEN (2) SCREWS OPPOSITE HINGE SIDE AND OPEN DOOR DO NOT REMOVE DOOR

STEP 2: LOOSEN (2) HEX NUTS ON THE HINGE SIDE THAT HOLD THE GLASS CLIPS DOWN.

STEP 3: SLIDE THE HOUSE SIDE SHIELD UNDER THE (2) CLIPS AND FOLD THE TABS OVER THE GLASS, RETIGHTEN (2) NUTS.

STEP 4: CLOSE DOOR, TIGHTEN (2) SCREWS TO HOLD DOOR IN PLACE. TURN ON POWER SUPPLY.

CAUTION: TO AVOID POSSIBLE ELECTRICAL SHOCK, BE SURE THAT POWER SUPPLY IS TURNED OFF BEFORE INSTALLING OR SERVICING THIS LUMINAIRE.

STEP 1: LOOSEN (2) SCREWS OPPOSITE HINGE SIDE AND RAISE HOUSING AND LATCH OPEN.

STEP 2: LOOSEN (2) HEX NUTS ON THE HINGE SIDE THAT HOLD THE GLASS CLIPS DOWN.

STEP 3: SLIDE THE HOUSE SIDE SHIELD UNDER THE (2) CLIPS AND FOLD THE TABS OVER THE GLASS, RETIGHTEN (2) NUTS.

STEP 4: LATCH HOUSING AND LOWER TO DOOR, TIGHTEN (2) SCREWS TO HOLD DOOR IN PLACE. TURN ON POWER SUPPLY.



COOPER LIGHTING

P.O. BOX 820-824

VICKSBURG, MS 39181-0824

THESE INSTRUCTIONS DO NOT CLAIM TO COVER ALL DETAILS OR VARIATIONS IN THE EQUIPMENT, PROCEDURE, OR PROCESS DESCRIBED, NOR TO PROVIDE DIRECTIONS FOR MEETING EVERY POSSIBLE CONTINGENCY DURING INSTALLATION, OPERATION OR MAINTENANCE. WHEN ADDITIONAL INFORMATION IS DESIRED TO SATISFY A PROBLEM NOT COVERED SUFFICIENTLY FOR USER'S PURPOSE, PLEASE CONTACT YOUR NEAREST REPRESENTATIVE.