

DESCRIPTION

The Lumière Eon LED 303-P1-LEDB1 is a compact, low profile, dimmable, ground mounted LED pathway lighting luminaire. It is provided with clear lens for maximum output and has been designed to provide downlight, but head can be aimed if necessary. The luminaire mounts directly to an integral recessed junction box and comes standard with an ELV, reverse phase dimming, universal input LED driver (120 - 277V, 50/60 Hz). An optional 0 - 10V dimming driver is available. The 303-P1-LEDB1 fixture may be used indoors or outdoors and carries an IP66 rating.

Catalog #	Type
Project	
Comments	Date
Prepared by	

SPECIFICATION FEATURES

Construction

The 303-P1-LEDB1 is precision machined from corrosion-resistant 6061-T6 aluminum. It is available with either a 12", 18" or 24" length extruded stem. Consult factory for additional lengths. The head of the luminaire can be adjusted for easy aiming. The base of the 303-P1 can be rotated 360° and locked in position. Stainless steel hardware is included.

Mounting

The luminaire mounts directly to an integral black polyester powder coated recessed junction box. Located on the bottom of the integral recessed junction box are two (2) 1/2 NPSM threaded conduit entries. A direct mount stability plate is also provided.

For further mounting information see technical notes section on page 2.

Optical

LightBAR™ and optical assembly are sealed by a clear, impact resistant tempered glass lens. The optical assembly is available in three distributions: T2 (lateral throw), T4 (forward throw) and T5X (Extra Wide Flood). Available in several color temperatures: 2700K, 3000K, 3500K, 4000K and TSAM (Amber). Both color temperature and distribution must be specified when ordering – see catalog logic for details. An edge-lit option is available.

Electrical

The 8.5W 303-P1-LEDB1 is standard with an ELV trailing edge phase dimmable driver that accepts a universal input (120-277, 50/60Hz). It will operate in -40°C to 50°C [-40°F to

122°F]. The driver incorporates surge protection. An optional 0-10V dimming driver is also available.

Finish

The luminaires are double protected by a RoHS compliant chemical film undercoating and polyester powder coat paint finish. A variety of standard colors are available. RAL and custom color matches available upon request. Luminaires can also be brushed with a clear coat finish. The LightBAR™ cover plates are standard white.

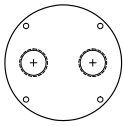
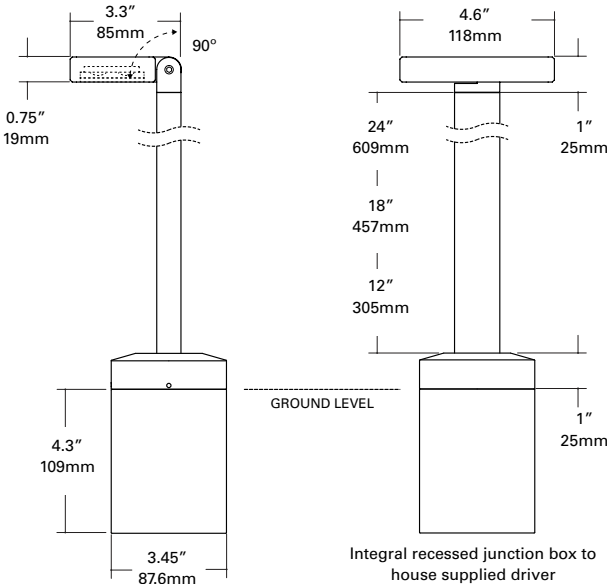
Warranty

Lumière warrants the EON series of fixtures against defects in material and workmanship for five (5) years. Auxiliary equipment such as LED drivers carries the original manufacturer's warranty.



303-P1-LEDB1
EON LED

APPLICATIONS:
PATHWAY
GROUND MOUNT



Integral box has two 1/2 NPSM threaded conduit entries located on the bottom.

CERTIFICATION DATA

UL and cUL Wet Location Listed
LM79 / LM80 Compliant
ROHS Compliant
IP66 Ingress Protection Rated

TECHNICAL DATA

50°C Maximum Temperature Rating
External Supply Wiring 90°C Minimum



ORDERING INFORMATION

Sample Number: 303-P1-LEDB1-2700-UNV-T2-DIM10-BK-12-EDGE

Series ⁴	Color Temperature	Input Voltage	Optics	Dimming	Finish ¹	Stem Length ²	Options ³
303-P1-LEDB1 Head contains one (1) Mini LightBAR™	2700=2700K 3000=3000K 3500=3500K 4000=4000K TSAM =Turtle Safe Amber (585-595nm)	UNV=Universal 120-277, 50/60Hz	T2=Type II, Lateral Throw T4=Type IV, Forward Throw T5X=Type V, Extra Wide Flood	DIMELV=Trailing Edge Phase DIM10=0-10V Dimming	Painted BK=Black BZ=Bronze CS=City Silver WT=White <u>Premium Finish</u> BA=Brushed	12=12" Stem 18=18" Stem 24=24" Stem	EDGE=Edge lit glass lens

NOTES: 1 Custom and RAL color matching available upon request. Consult factory for further information. 2 Stem lengths are nominal (shown in inches). 3 Add suffix in the order shown. 4 DesignLights Consortium™ Qualified and classified for DLC Standard. Refer to www.designlights.org for details on exact qualified EON 303-P1-LEDB1 product as not all configurations are DLC classified.

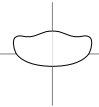
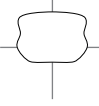
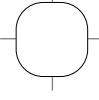
LUMEN MAINTENANCE

Ambient Temperature	TM-21 Lumen Maintenance (72,000 Hours)	TM-21 Reported L70(10k) (Hours)	Theoretical L70 (Hours)
25°C	> 94%	> 60,000	365,000
40°C			
50°C			

CURRENT DRAW

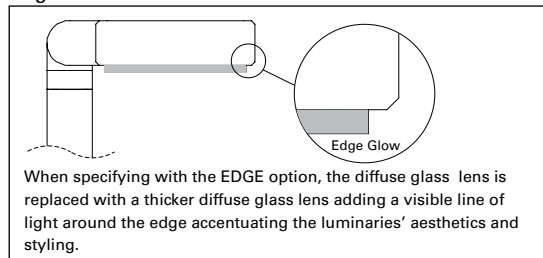
Model	Line Voltage	Current Draw
303-P1-LEDB1	120-277V, 50/60Hz	0.068A

LUMENS - CRI/CCT TABLE

Optic Type	Distribution	Watts	Delivered Lumens	LPW	CCT (K) / Color	CRI nom. / Wavelength
T2 (Lateral Throw)		8.5	419	50	2700	95
			696	83	3000	75
			487	58	3500	85
			767	92	4000	75
		6.5	213	33	TSAM (Amber)	585-595nm
T4 (Forward Throw)		8.5	375	44	2700	95
			623	74	3000	75
			436	51	3500	85
			687	81	4000	75
		6.5	191	29	TSAM (Amber)	585-595nm
T5X (Extra Wide Flood)		8.5	395	47	2700	95
			656	79	3000	75
			459	55	3500	85
			723	86	4000	75
		6.5	201	31	TSAM (Amber)	585-595nm

OPTIONS

Edge



TECHNICAL NOTES

1. If luminaire will not be dimmed, the luminaire must still be ordered with DIMELV option.
2. Integral recessed junction box is 3.45 inches in diameter and has 4.3 inches below ground level. It is machined from aluminum 6061-T6 and is double protected by a RoHS compliant chemical film undercoating and black polyester powder coat paint finish. It has two 1/2 NPSM conduit entries on the bottom of the box.
3. Stability plate directly mounts to base of integral recess box with four (4) screws. In addition, four (4) holes to accept 3/8" threaded anchor bolts if necessary.

