

INSTALLATION INSTRUCTIONS

IMPORTANT: READ CAREFULLY BEFORE INSTALLING FIXTURE.

General: Upon receipt of fixture thoroughly inspect for any freight damage, which should be brought to the attention of the delivery carrier. Compare the catalog description listed on the packing slip with the fixture label to assure you have received the correct merchandise.

Safety: This fixture must be wired in accordance with the national electrical code and applicable local codes and ordinance. Proper grounding is required to insure personal safety. Carefully observe grounding procedure. All work should be done by an electrician.



WARNING: Risk of Electric Shock. Disconnect power before installing or servicing.

WARNING: Do not mount in ground or ceiling application. Do not submerge in water.

WARNING: Risk of Fire. Supply conductors (power wires) connecting the fixture must be rated minimum 90°C.

WARNING: Do not mount 1235 fixtures that have a 20 watt T3 source in combustible materials.

CAUTION: Fixture may be hot during normal operation.

CAUTION: Clean gloves should be worn during installation and maintenance to avoid damaging the optic and to keep hands safe.

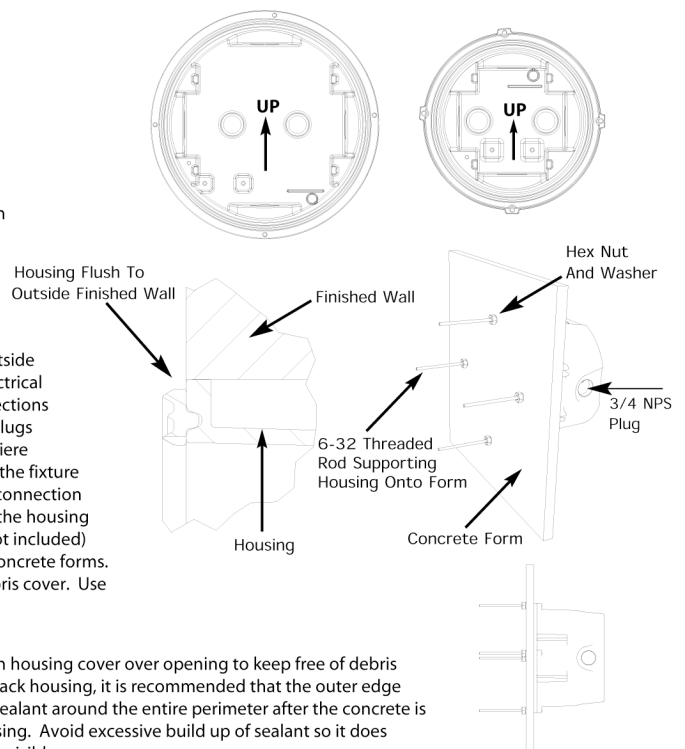
NOTE: Approved for through circuit wiring using 6 (3IN/3OUT), #12AWG wires, maximum current 16 amps, rated 90°C for daisy chain applications. Rated for 25°C ambient applications.
For recessed wall mount applications only.

Recessed Back Housing - For use in 5" or thicker walls Concrete Pour Application (non-combustible materials)

Note: All concrete pour rated fixtures are designed to have the housing completely flush with the outside finished wall. If additional material is being added to the already poured wall (such as decorative marble or Dryvit™), then accommodations will need to be considered and made for the back housing to be completely flush with the final layer of finish material. Failure to follow this procedure may result in incorrect sealing of the fixture and inability to mount final trim.

1. The Housing Assembly may be mounted within forms before the concrete is poured. Run electrical supply lines prior to pouring wall. Use 3/4" water tight conduit fittings.
2. Remove housing cover. Ensure that the housing is in "UP" position (see inside housing) and at proper height. The outside front surface of the housing must be flush with the outside finished wall to ensure proper installation. Choose appropriate conduit entry hub for electrical wiring and make sure there is adequate space for conduit run within wall. Conduit connections must be water tight and any conduit entry ports not used by conduit must be plugged (plugs included). Conduit plugs must be sealed and water tight, just like the conduit itself. Lumiere recommends the use of re-enterable, non-hardening sealant, to ensure water-tightness of the fixture (keytight joint compound, McMaster-Carr #4586K4 or equivalent). Connect "quick" wire connection module to supply wires. A pour cover is provided to aid in keeping debris from entering the housing during the pouring of concrete. Concrete form can be mounted using 6-32 all thread (not included) through form and secured with hex nuts and washers. Make sure housing is flush with concrete forms. (see Figure 1) Secure bolts through form into respective holes that are used to attach debris cover. Use of washers under bolts heads is recommended.
3. When concrete forms are removed, clear any debris from around the front surface. Fasten housing cover over opening to keep free of debris for future installation. Due to possible imperfection of joint around the perimeter of the back housing, it is recommended that the outer edge of the flange that meets flush with the mounting material be caulked/sealed with liquid sealant around the entire perimeter after the concrete is poured. This will offer greater protection of moisture penetration between wall and housing. Avoid excessive build up of sealant so it does not interfere with finish trim faceplate. If it is installed correctly, this seam area will not be visible.

Figure 1: Housing Assembly



These instructions do not claim to cover all details or variations in the equipment, procedure, or process described, nor to provide directions for meeting every possible contingency during installation, operation or maintenance. When additional information is desired to satisfy a problem not covered sufficiently for user's purpose, please contact your nearest representative.

INSTALLATION INSTRUCTIONS

IMPORTANT: READ CAREFULLY BEFORE INSTALLING FIXTURE.



WARNING: Risk of Electric Shock. Disconnect power before installing or servicing.

WARNING: Do not mount in ground or ceiling application. Do not submerge in water.

WARNING: Risk of Fire. Supply conductors (power wires) connecting the fixture must be rated minimum 90°C.

WARNING: Do not mount 1235 fixtures that have a 20 watt T3 source in combustible materials.

CAUTION: Fixture may be hot during normal operation.

CAUTION: Clean gloves should be worn during installation and maintenance to avoid damaging the optic and to keep hands safe.

NOTE: Approved for through circuit wiring using 6 (3IN/3OUT), #12AWG wires, maximum current 16 amps, rated 90°C for daisy chain applications. Rated for 25°C ambient applications.
For recessed wall mount applications only.

Recessed Back Housing - For use in 5" or thicker walls

Masonry Application (non-combustible materials)

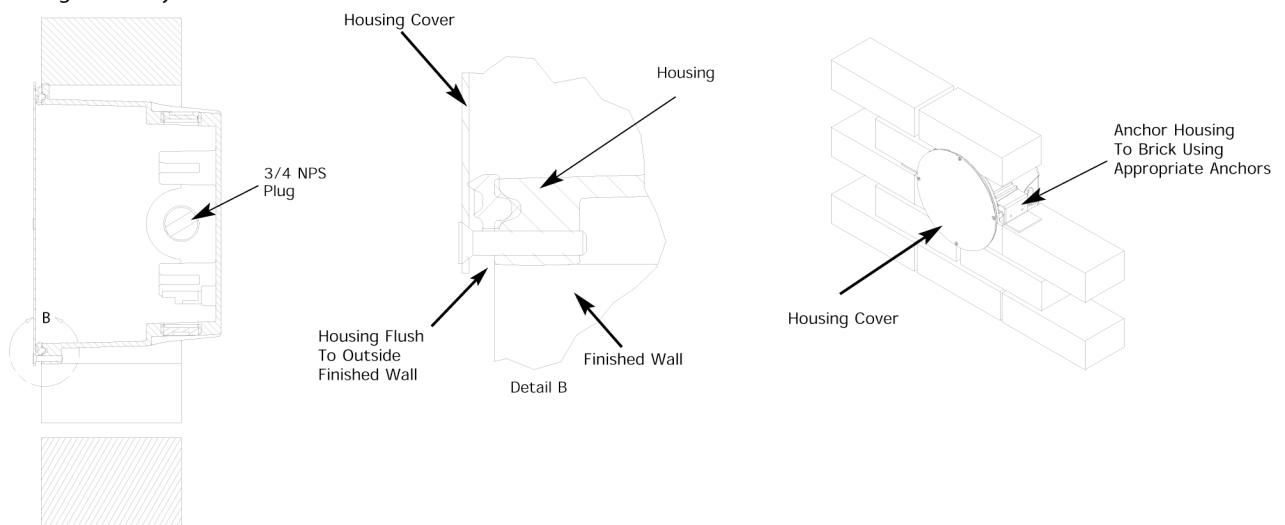
Note: All masonry rated fixtures are designed to have the housing completely flush with the outside finished wall. If additional material is being added to the wall (such as decorative marble or Dryvit™), then accommodations will need to be considered and made for the back housing to be completely flush with the final layer of finish material. Failure to follow this procedure may result in incorrect sealing of the fixture and inability to mount final trim.

- Unit may be placed at time of brick/masonry construction. Remove housing cover. Run electrical supply lines prior to building wall. Use 3/4" conduit fittings.

Ensure that the housing is in the "up" position and at proper height (see inside housing.) Attach the brackets to the sides of the housing. Brackets can then be anchored to the concrete blocks or bricks while brick wall is being completed. Choose appropriate conduit entry for electrical wiring and make sure there is adequate space for the conduit run within wall. Connect the "quick" wire connection module to supply wires. Conduit connections must be water tight and any conduit entry ports not used by conduit must be plugged (plugs included). Conduit plugs must be sealed and water tight, just like the conduit itself. Lumière recommends the use of re-enterable, non-hardening sealant, to ensure water-tightness of the fixture (keytight joint compound, McMaster-Carr #4586K4 or equivalent).

- When complete, clear any debris from the front surface. Fasten housing cover over opening to keep free of debris for future installation. Due to possible imperfection of mortar joint around the perimeter of the back housing, it is recommended that the outer perimeter of the flange be caulked/sealed with liquid sealant around the entire perimeter. This will offer greater protection of the moisture penetration between wall and housing. Avoid excessive build up of sealant so it does not interfere with finish trim faceplate. If installed correctly, this seam area will not be visible.

Figure 2: Housing Assembly



These instructions do not claim to cover all details or variations in the equipment, procedure, or process described, nor to provide directions for meeting every possible contingency during installation, operation or maintenance. When additional information is desired to satisfy a problem not covered sufficiently for user's purpose, please contact your nearest representative.

INSTALLATION INSTRUCTIONS

IMPORTANT: READ CAREFULLY BEFORE INSTALLING FIXTURE.



WARNING: Risk of Electric Shock. Disconnect power before installing or servicing.

WARNING: Do not mount in ground or ceiling application. Do not submerge in water.

WARNING: Risk of Fire. Supply conductors (power wires) connecting the fixture must be rated minimum 90°C.

WARNING: Do not mount 1235 fixtures that have a 20 watt T3 source in combustible materials.

CAUTION: Fixture may be hot during normal operation.

CAUTION: Clean gloves should be worn during installation and maintenance to avoid damaging the optic and to keep hands safe.

NOTE: Approved for through circuit wiring using 6 (3IN/3OUT), #12AWG wires, maximum current 16 amps, rated 90°C for daisy chain applications.
Rated for 25°C ambient applications.
For recessed wall mount applications only.

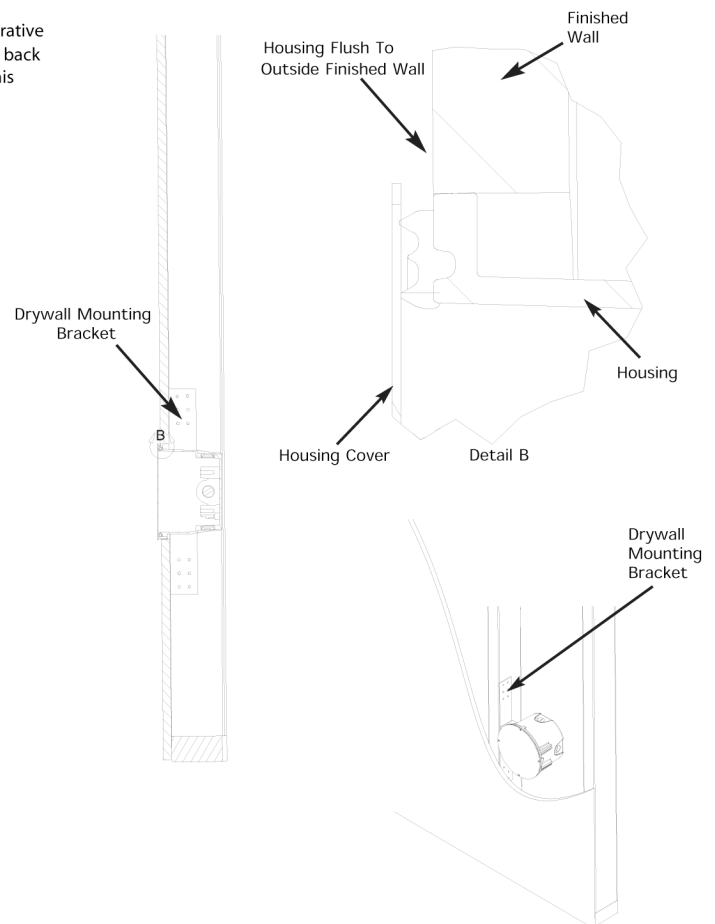
Recessed Back Housing - For use in 5" or thicker walls

Drywall or similar material Application (combustible materials)

Note: All drywall rated fixtures are designed to have the housing completely flush with the outside finished wall. If additional material is being added to the wall (such as decorative marble or Dryvit™), then accommodations will need to be considered and made for the back housing to be completely flush with the final layer of finish material. Failure to follow this procedure may result in incorrect sealing of the fixture and inability to mount final trim.

1. Unit may be placed at time of drywall construction. Attach drywall mounting bracket to one side of the fixture housing. One drywall bracket is required for each housing. Mounting flanges on bracket will align with mounting rails on the outside of the housing and will slide together. Ensure that the housing is in the "up" position and that the proper height (see up arrow inside of housing). Attach drywall mounting bracket to stud or wood blocking as required. Additional blocking may be required to place housing in final location.
2. Choose appropriate conduit entry for electrical wiring and make sure there is adequate space for conduit run within wall. Conduit connections must be water tight and any conduit entry ports not used by conduit must be plugged (plugs included). Conduit plugs must be sealed and water tight, just like the conduit itself. Lumiere recommends the use of re-enterable, non-hardening sealant, to ensure water-tightness of the fixture (keytight joint compound, McMaster-Carr #4586K4 or equivalent). Connect "quick" wire connection module to supply wires.
3. Mounting the 1235-20T3 model in combustible materials requires the use of an insulation detector. All other models do not require an insulation detector. Make sure the insulation detector is snapped into the bottom conduit entry port of the housing.
4. Clear any debris from the front surface. Fasten cover over opening to keep free of debris for future installation.

Figure 3: Housing Assembly



These instructions do not claim to cover all details or variations in the equipment, procedure, or process described, nor to provide directions for meeting every possible contingency during installation, operation or maintenance. When additional information is desired to satisfy a problem not covered sufficiently for user's purpose, please contact your nearest representative.

INSTALLATION INSTRUCTIONS

IMPORTANT: READ CAREFULLY BEFORE INSTALLING FIXTURE.

01/15/07



- WARNING:** Risk of Electric Shock. Disconnect power before installing or servicing.
- WARNING:** Do not mount in ground or ceiling application. Do not submerge in water.
- WARNING:** Risk of Fire. Supply conductors (power wires) connecting the fixture must be rated minimum 90°C.
- WARNING:** Do not mount 1235 fixtures that have a 20 watt T3 source in combustible materials.
- CAUTION:** Fixture may be hot during normal operation.
- CAUTION:** Clean gloves should be worn during installation and maintenance to avoid damaging the optic and to keep hands safe.

NOTE: Approved for through circuit wiring using 6 (3IN/3OUT), #12AWG wires, maximum current 16 amps, rated 90°C for daisy chain applications. Rated for 25°C ambient applications. For recessed wall mount applications only.

Mounting Instructions: Finishing Section (Faceplate assembly/Power Tray assembly)

This unit is designed to be mounted onto a housing assembly that has been recess mounted into a wall. The complete finished fixture consists of four sub-assemblies (recessed back housing assembly, power tray assembly, lens/bezel assembly and faceplate assembly).

1. Remove the plastic cover, if available. Before installation of faceplate, make sure housing is clean, dry and free of debris.
2. Remove power tray assembly, lens/bezel assembly and faceplate assembly from shipping carton. Check to ensure gasket is aligned around perimeter of the housing. Peel off top layer of white adhesive tape (located on the rear surface of the power tray) and install the power tray inside of the already mounted back housing. Make sure the electrical connector on power tray is connected to the connector on inside of housing. Complete electrical connection, pack wires to avoid interference with attached components on back of power tray. Complete attachment of power tray using (1) 4-40 Phillips head screw. (provided)
3. Install lamp with correct specification and wattage.
4. Lens/Bezel Assembly: Position lens/bezel assembly with up arrow pointing upwards. Mount the lens/bezel assembly to the housing using (4) 6-32 Phillips head screws (provided). Tighten screws manually with hand held, non-powered screwdriver to compress gasket. Use of powered screwdriver may over torque screws and damage gasket.
5. Faceplate Assembly: Position the faceplate assembly with the set screw pointing downwards. Rotate the faceplate assembly approximately 20° counterclockwise so that the screw heads in the faceplate assembly align with the adjustment slots in the lens/bezel assembly. Insert the faceplate assembly into the lens/bezel assembly and rotate the faceplate assembly approximately 10° clockwise or until the faceplate is aligned correctly. Note that the adjustment slots allow for +/- 10° adjustment of the faceplate assembly to make up for the misalignment of the housing assembly. To make faceplate attachment easier, the screws on the back of the faceplate may be loosened slightly, if necessary. Using an allen wrench, secure the faceplate in final position by tightening the set screw.

Figure 4: 1237 Housing Assembly

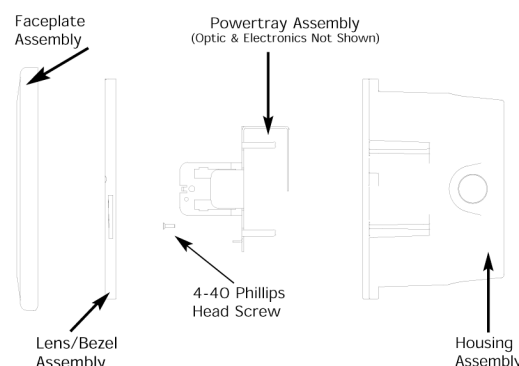
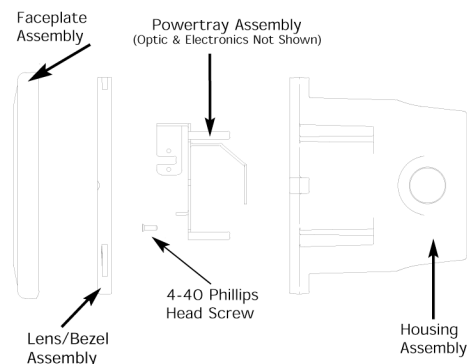


Figure 5: 1235 Housing Assembly



These instructions do not claim to cover all details or variations in the equipment, procedure, or process described, nor to provide directions for meeting every possible contingency during installation, operation or maintenance. When additional information is desired to satisfy a problem not covered sufficiently for user's purpose, please contact your nearest representative.