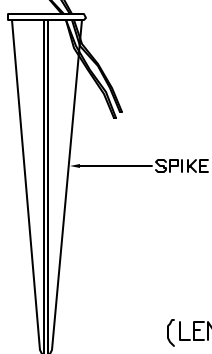
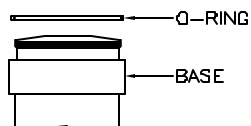
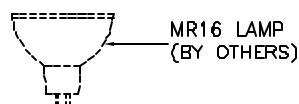
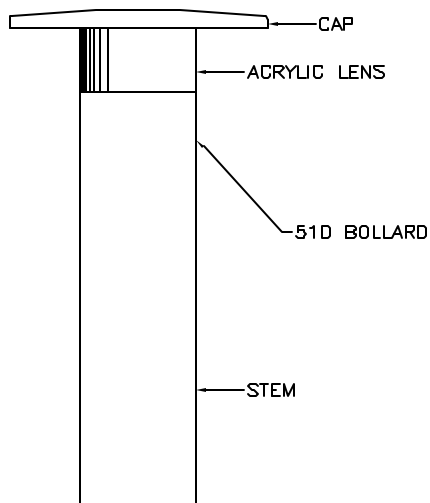




Lumiere
1250 Calle Suerte
Camarillo, CA 93012
Telephone: (805) 484-7713
FAX: (805) 445-7693

COOPER Lighting

INSTALLATION INSTRUCTIONS FOR 501, 502, 503, 504, 507, 510.



WARNING:

WIRING AND INSTALLATION MUST BE PERFORMED BY A QUALIFIED ELECTRICIAN ONLY.
TURN POWER OFF BEFORE INITIAL INSTALLATION, SERVICING, MAINTENANCE, OR RELAMPING. FOR USE WITH MAXIMUM 25A, 15V POWER UNITS ONLY.
FIXTURES SHOULD ALWAYS BE INSTALLED IN ACCORDANCE WITH LOCAL AND NATIONAL ELECTRIC CODES.

NOTE:

THIS IS A 12 VOLT FIXTURE. A REMOTE TRANSFORMER IS REQUIRED (NOT INCLUDED).

DO NOT INSTALL THIS FIXTURE IN ANY COMBUSTIBLE MATERIALS!
USE UL LISTED WATERPROOF WIRE CONNECTORS: CAT. NUMBER KING-T6, MANUFACTURED BY KING TECHNOLOGY, INC OR EQUIVALENT.

INSTALLATION:

1. ASSEMBLE SPIKE AND FIXTURE BASE TOGETHER.
2. REMOVE FIXTURE STEM (IF ASSEMBLED). INSTALL LAMP.
3. RETURN STEM TO BASE. MAKE SURE O-RING IS IN PLACE.
4. POSITION FIXTURE IN ITS LOCATION. CHECK FIXTURE IS PLUMB.
5. CONNECT FIXTURE WIRES TO 12V POWER LINE FROM REMOTE TRANSFORMER (NOT INCLUDED).
6. APPLY POWER TO FIXTURE TO TEST FOR PROPER OPERATION.

RELAMPING:

WARNING:

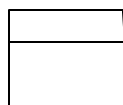
USE 12 VOLT 20 WATT (MAXIMUM) MR16 HALOGEN LAMP. CHECK PACKAGE AND FIXTURE LABELING CAREFULLY TO ENSURE USING LAMP OF PROPER TYPE AND WATTAGE.

TO RELAMP:

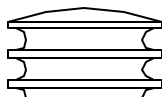
REMOVE (UNSCREW) FIXTURE STEM FROM BASE. PULL (DO NOT TWIST) THE LAMP OUT. PUSH A NEW LAMP IN. RETURN STEM TO BASE. CHECK O-RING. REPLACE IF NECESSARY.

Cooper Lighting - Lumiere reserves the right to make design changes without notice.

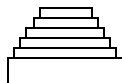
ACRYLIC LENSES AVAILABLE WITH LUMIERE MINI BOLLARDS:
(LENSES ARE FACTORY INSTALLED AND ARE NOT FIELD REPLACEABLE)



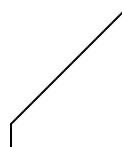
501



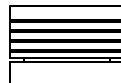
502




503



504



507

A	02-27-02	PRODUCTION RELEASE	MCN
REV.	DATE	DESCRIPTION	2/142
TITLE		 Lumiere 1250 Calle Suerte Camarillo, CA 93012 Telephone: (805) 484-7713 FAX: (805) 445-7693	
MODEL		501,502,503,504,507,510	REV. A
DWG No.		8794	
DFTSMN ELENA KUSHINSKAYA		SHEET 1 OF 1	