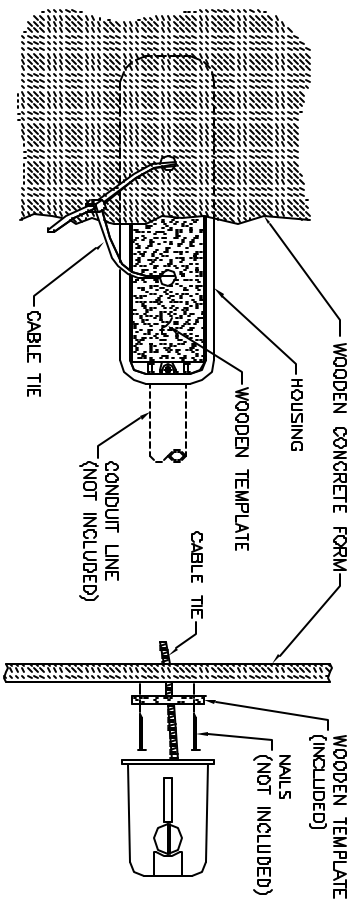




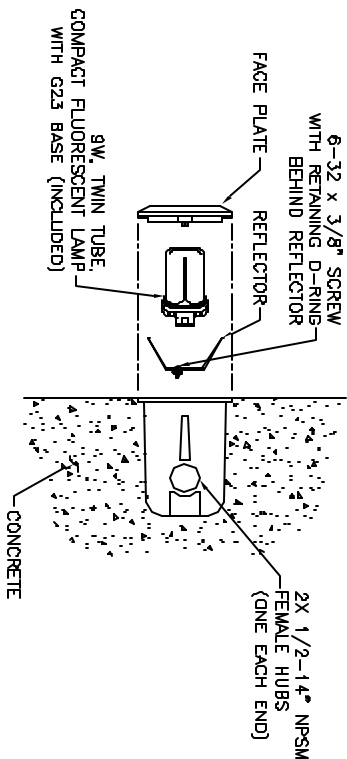
Lumière
1250 Calle Suente
Camarillo, CA 93012-8053
Telephone: (805) 484-7713 FAX: (805) 445-7693



CONCRETE POUR PREPARATION



WOODEN CONCRETE FORM REMOVED



FOR CONNECTION TO
120 VOLT POWER SUPPLY ONLY

INSTALLATION INSTRUCTIONS CATALOG NO: 1211 SERIES (NON-IC) 9W TWIN COMPACT FLUORESCENT LAMP WITH G23 BASE: FOR NON COMBUSTIBLE INSTALLATION:

WARNING:

WIRING AND INSTALLATION MUST BE PERFORMED BY A QUALIFIED ELECTRICIAN ONLY. TURN POWER OFF BEFORE INITIAL INSTALLATION, SERVICING, MAINTENANCE, OR RELAMPING. FIXTURES SHOULD ALWAYS BE INSTALLED IN ACCORDANCE WITH LOCAL AND NATIONAL ELECTRIC CODES.

INSTALLATION INSTRUCTIONS:

1. NAIL THE WOODEN TEMPLATE (INCLUDED) TO THE BACK OF THE WOODEN CONCRETE FORM IN THE DESIRED LOCATION.
2. DRILL TWO 1/4" HOLES INTO THE WOODEN FORM USING THE HOLES IN THE WOODEN TEMPLATE TO GUIDE DRILL.
3. REMOVE THE REFLECTOR FROM THE HOUSING.
4. CONNECT CONDUIT AND 120V SUPPLY WIRES (NOT INCLUDED) INTO THE HOUSING.
5. CONNECT THE WIRES USING U.L. LISTED WIRE NUT CONNECTORS, WATERPROOF TYPE (Cot.# King I-6, Mtd. by King Technologies, Inc. or equivalent).
6. PULL THE CABLE TIE ENDS FROM HOUSING THROUGH EACH HOLE AND OUT TO THE FRONT OF THE WOODEN FORM. INSERT THE CABLE TIE END INTO THE CABLE TIE LOCK.
7. PULL CABLE TIE TIGHT TO PULL THE HOUSING UP AGAINST THE BACK OF THE WOODEN FORM.
8. AFTER THE CONCRETE HAS SET, CUT THE CABLE TIE AND REMOVE WOODEN CONCRETE FORM.
9. REMOVE CABLE TIE, CABLE TIE PAD AND ATTACHING SCREW (DISCARD).
10. INSTALL REFLECTOR WITH SCREW INTO BOSS INSIDE HOUSING.
11. INSTALL 9W TWIN TUBE, COMPACT FLUORESCENT LAMP WITH G23 BASE.
12. PER LAMPING INSTRUCTIONS BELOW.
13. INSTALL FACE PLATE (SOLD SEPARATELY) USING TWO SCREWS (INCLUDED WITH FACE PLATE).
14. TURN ON POWER TO TEST FOR PROPER OPERATION.

RELAMPING:

USE ONLY 9W TWIN TUBE, COMPACT FLUORESCENT LAMP WITH G23 BASE. CHECK PACKAGE AND FIXTURE LABELING CAREFULLY TO ENSURE USING ONLY LAMPS OF PROPER TYPE AND WATTAGE.

TO RELAMP:
LOOSEN SCREWS OF FACE PLATE. PULL FACE PLATE STRAIGHT OUT. PULL OLD LAMP OUT FROM SOCKET (DO NOT TWIST). SNAP NEW LAMP INTO SOCKET. REPLACE FACE PLATE TO HOUSING.

REV.	DATE	DESCRIPTION	MCN#
C	03-11-02	SEE MCN M2165 FOR CHANGES	M2165
B	02-25-02	SEE MCN M2147 FOR CHANGES	M2147
A	08-24-92	PRODUCTION RELEASE	-
TITLE			
INSTALLATION INSTRUCTIONS			
MODEL		DWG No.	REV.
1211 SERIES (NON-IC)		2621	C

Cooper Lighting Lumière reserves the right to make design changes without notice.