

## DESCRIPTION

Low brightness 4-1/2-inch aperture reflector for use with 26W Triple Twin Tube compact fluorescent lamps. The precisely formed non-imaging reflector ensures 55° cutoff to lamp and lamp image and the one piece design eliminates light leaks at the ceiling. Standard features include low iridescent finish on all reflector colors to eliminate "rainbowing" and venting to ensure maximum lamp life and lumen output. The fixture optics offer unparalleled performance in glare free lighting providing a smooth beam devoid of hot spots. Open downlight, lens, and open wall wash trims are interchangeable within the same housing.

## SPECIFICATION FEATURES

### Reflector

.050 thick aluminum in a one piece spun macrofocal parabolic contour. Available in a variety of Alzak® finishes. Positive reflector mounting pulls trim tight to ceiling.

### Trim Ring Options

Self flanged or molded white trim ring. Rimless or metal trim ring accessories available.

### Socket Cap

One piece vented and finned die cast aluminum cap for maximum thermal performance.

### Housing Mounting Frame

One piece precision die cast aluminum 1-1/2" deep collar accommodates varying dimensions of ceiling materials.

### Universal Mounting Bracket

Accepts 1/2" EMT, C Channel, T bar fasteners, and bar hangers. Adjusts 5" vertically from above or below ceiling.

### Conduit Fitting

Die cast screw tight connectors.

### Junction Box

Listed for eight #12AWG (four in, four out) 90°C conductors feed through branch wiring. 1/2" and two 3/4" pry outs. Positioned to allow straight conduit runs. Access to junction box by removing reflector.

### Socket

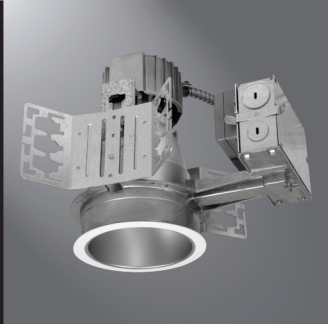
4-pin GX24q3 base for C4026 fatigue free stainless steel lamp spring ensures positive lamp retention.

### Electronic Ballast

Electronic ballast provides full light output and rated lamp life. Provides flicker free and noise free operation and starting. End of lamp life protection is standard.

### Labels

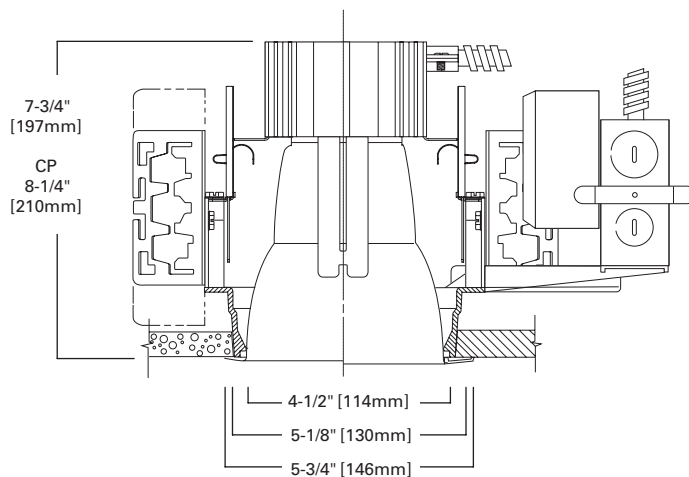
cULus listed, standard damp label.



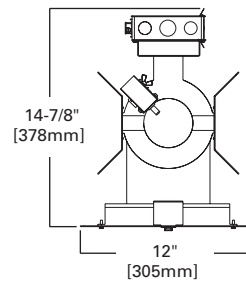
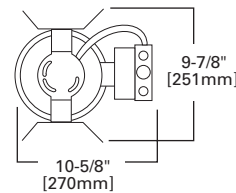
## C4026 4050/4051

26W TTT  
Compact Fluorescent

4-Inch Open Downlight



### Top View



(with IEM Option)

ENERGY DATA	
26W TTT 4-pin	
Ballast: Electronic	
120V Input Watts: 29	Line Amps: 0.25
277V Input Watts: 26	Line Amps: 0.09
Power Factor: >0.99	THD: <90%
Min. Starting Temperature: -10°C (15°F)	
Sound Rating: Class A Standards	

**NOTES:** Accessories should be ordered separately. For additional options, please consult your Cooper Lighting Representative. Alzak is a registered trademark of Aluminum Company of America.

# ORDERING INFORMATION

C4026 4050/4051

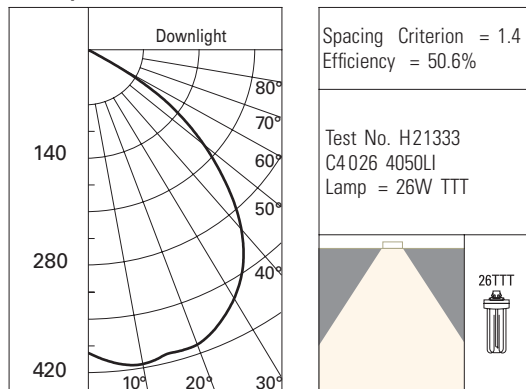
EXAMPLE: C4026E 4051WH

Housing	Wattage	Ballast	Options	Trims	Finish	Options	Accessories
<b>C40</b> =4" CF Vertical	<b>26</b> =(1) 26W TTT Lamp	<b>E</b> =120/277V 50/60 Hz Electronic <b>3E</b> =347V 50/60 Hz Electronic <b>D5LT</b> =120-277V Fifth Light (DALI Dimming) <b>3D5LT</b> =347V Fifth Light (DALI Dimming) <b>D</b> =120-277V Dimming Lutron EcoSystem/ 3-Wire Control (Factory Wired for 3-Wire) <b>D MARK VII</b> =26W 120-277V Advance MARK 7 <b>1D MARK X</b> =26W 120V Advance MARK 10 <b>2D MARK X</b> =26W 277V Advance MARK 10	<b>CP</b> =Chicago Plenum <b>EM</b> =Emergency Module with Remote Test Switch <b>IEM</b> =Emergency Module with integral test switch	<b>4051</b> =Self Flanged <b>4050</b> =Reflector, Molded Trim Ring, White <b>4051E</b> =Reflector, Self Flanged, use with IEM option <b>4050E</b> =Reflector, Molded Trim Ring, White, use with IEM option	<b>LI</b> =Low Iridescent Clear <b>H</b> =Haze <b>WMH</b> =Warm Haze <b>G</b> =Gold <b>WH</b> =Wheat <b>W</b> =Gloss White <b>GP</b> =Graphite <b>GPH</b> =Graphite Haze	<b>WF</b> =White Painted Flange (Self Flanged only)	<b>HB26</b> =C Channel Bar Hangers, 26" Long, Pair <b>HB50</b> =C Channel Bar Hangers, 50" Long, Pair <b>TRM4</b> =Metal Trim Ring, Specify Finish <sup>1</sup> <b>TRR4</b> =Rimless Trim Ring, White <sup>1</sup> <b>FK5</b> =5 Amp Field Installable Fuse Kit 300V Max <b>RMB-22</b> =Wood Joist Bar Hanger, 22" Long, Pair <b>HSA4</b> =Slope Adapter for 4" Aperture Housings, Specify Slope

**Notes:** <sup>1</sup> Order trim with polymer trim ring (Consult specification sheet for ordering information and options).

## PHOTOMETRICS

### Candlepower Distribution Curve



### Cone of Light

Distance Fixture to Lighted Plane	Initial Footcandles at Nadir	Beam Diameter
4'0"	25	5'6"
6'0"	11	8'0"
7'6"	7	10'0"
8'0"	6	11'0"
10'0"	4	13'6"

### Coefficients of Utilization

Ceiling Wall % RCR	80%				70%			50%	
	70	50	30	10	50	30	10	50	10
Zonal cavity method -- floor reflectance = 20%									
0	60	60	60	60	59	59	59	56	56
1	56	55	53	52	54	52	51	51	49
2	52	49	47	44	48	46	44	47	43
3	49	44	41	38	44	40	38	42	37
4	45	40	36	33	39	36	33	38	33
5	42	36	32	29	36	32	29	35	29
6	39	33	29	26	32	29	26	32	26
7	36	30	26	23	30	26	23	29	23
8	34	27	24	21	27	23	21	26	21
9	31	25	21	19	25	21	19	24	19
10	30	23	20	17	23	20	17	23	17