

DESCRIPTION

Low brightness 4-1/2-inch aperture lensed reflector for use with 13W Quad tube compact fluorescent lamps. The deeply regressed lens provides superb shielding to eliminate brightness at higher angles. Choice of lenses for various aesthetics. Standard features include low iridescent finish on all reflector colors (to eliminate "rainbowing") and venting to ensure maximum lamp life and lumen output. The modular housing will also accept various downlight and wall wash reflectors.

SPECIFICATION FEATURES

Reflector

.050 thick aluminum, in a one piece spun macrofocal parabolic contour. Available in a variety of Alzak® finishes. Positive reflector mounting pulls trim tight to ceiling.

Lens

Choice of tempered fresnel, prismatic, diffuse, or clear glass lenses or molded prismatic acrylic, opal diffuser or clear UV stabilized acrylic. Lens is fixed to lower reflector.

Trim Ring Options

Self flanged or molded white trim ring.

Socket Cap

One piece vented and finned die cast aluminum cap for maximum thermal performance.

Housing Mounting Frame

One piece precision die cast aluminum 1-1/2" deep collar accommodates varying dimensions of ceiling materials.

Universal Mounting Bracket

Accepts 1/2" EMT, C Channel, T bar fasteners, and bar hangers. Adjusts 5" vertically from above or below ceiling.

Conduit Fittings

Die cast screw tight connectors.

Junction Box

Listed for eight #12AWG (four in, four out) 90°C conductors feed through branch wiring. 1/2" and two 3/4" pry outs. Positioned to allow straight conduit runs. Access to junction box by removing reflector.

Catalog

Project

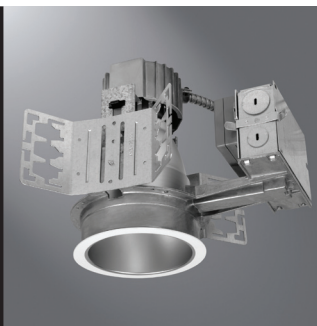
Comments

Prepared by

Type

Date

PORTFOLIO™



**C4013
4080/4081**

**13W Quad
Compact Fluorescent**

4-Inch Lensed Downlight

ENERGY DATA

13W TTT 4-pin

Ballast: Electronic

120V Input Watts: 16 Line Amps: 0.13

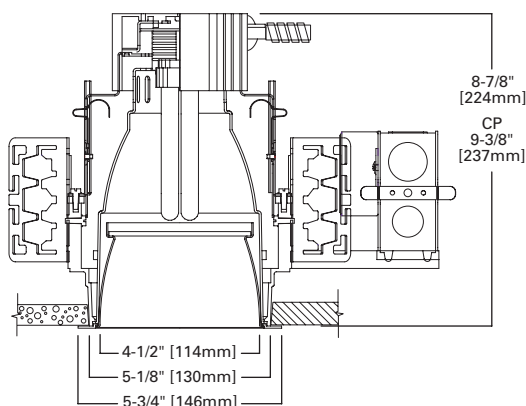
277V Input Watts: 16 Line Amps: 0.06

Power Factor: >0.99 THD: <10%

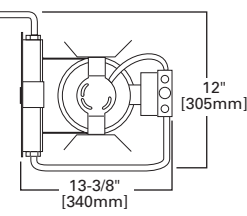
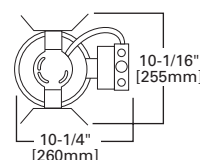
Min. Starting Temperature: -10°C (15°F)

Sound Rating: Class A Standards

NOTES: Accessories should be ordered separately. For additional options, please consult your Cooper Lighting Representative. Alzak is a registered trademark of Aluminum Company of America.



Top View



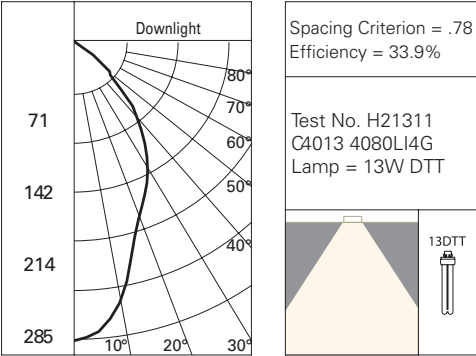
(with EM Option)

EXAMPLE: C4013E 4081LI3G

Housing	Wattage	Ballast	Options	Trims	Finish	Lens	Option	Accessories
C40=4" CF Vertical		E=120/277V 50/60 Hz Electronic 3E=347V 50/60 Hz Electronic	CP=Chicago Plenum EM=Emergency Module with Remote Test Switch	4081=Lensed, Reflector, Self Flanged 4080=Lensed, Reflector, Molded Trim Ring	LI=Low Iridescent Clear H=Haze WMH=Warm Haze G=Gold WH=Wheat W=Gloss White GP=Graphite GPH=Graphite Haze BB=Black Baffle (4080 only) WB=White Baffle (4080 only)	1=Prismatic Lens 2=Diffuse Lens 3=Clear Lens 1G=Prismatic Glass 2G=Diffuse Glass 3G=Clear Glass 4G=Fresnal Glass	WF=White painted flange (self flanged only)	HB26=C Channel Bar Hangers, 26" Long, Pair HB50=C Channel Bar Hangers, 50" Long, Pair FK5=5 Amp Field Installable Fuse Kit 300V Max RMB-22=Wood Joist Bar Hanger, 22" Long, Pair HSA4=Slope Adapter for 4" Aperture Housings. Specify Slope

PHOTOMETRICS

Candlepower Distribution Curve



Cone of Light

Distance Fixture to Lighted Plane	Initial Footcandles at Nadir	Beam Diameter
4'0"	18	3'0"
6'0"	8	4'6"
7'0"	6	5'6"
8'0"	4	6'0"
10'0"	3	8'0"

Coefficients of Utilization

Ceiling Wall% RCR	80%				70%				50%	
	70	50	30	10	50	30	10		50	10
Zonal cavity method – floor reflectance = 20%										
0	40	40	40	40	39	39	39		38	38
1	38	37	36	35	36	36	35		35	34
2	36	34	32	31	33	32	31		32	30
3	34	31	29	28	31	29	28		30	27
4	32	29	27	25	28	26	25		28	24
5	30	26	24	23	26	24	22		25	22
6	28	24	22	20	24	22	20		24	20
7	26	23	20	19	22	20	19		22	19
8	25	21	19	17	21	19	17		21	17
9	23	20	17	16	20	17	16		19	16
10	22	18	16	15	18	16	15		18	15