

DESCRIPTION

Low brightness 4-1/2-inch aperture lensed reflector for use with 26W Triple Twin Tube compact fluorescent lamps. The deeply regressed lens provides superb shielding to eliminate brightness at higher angles. Choice of lenses for various aesthetics. Standard features include low iridescent finish on all reflector colors (to eliminate "rainbowing") and venting to ensure maximum lamp life and lumen output. The modular housing will also accept various downlight and wall wash reflectors.

SPECIFICATION FEATURES

Reflector

.050 thick aluminum, in a one piece spun macrofocal parabolic contour. Available in a variety of Alzak® finishes. Also available with white or black baffle. Positive reflector mounting pulls trim tight to ceiling.

Lens

Choice of tempered fresnel, prismatic, diffuse, or clear glass lenses or molded prismatic acrylic, opal diffuser or clear UV stabilized acrylic. Lens is fixed to lower reflector.

Trim Ring Options

Self flanged or molded white trim ring.

Socket Cap

One piece vented and finned die cast aluminum cap for maximum thermal performance.

Housing Mounting Frame

One piece precision die cast aluminum 1-1/2" deep collar accommodates varying dimensions of ceiling materials.

Universal Mounting Bracket

Accepts 1/2" EMT, C Channel, T bar fasteners, and bar hangers. Adjusts 5" vertically from above or below ceiling.

Conduit Fittings

Die cast screw tight connectors.

Junction Box

Listed for eight #12AWG (four in, four out) 90°C conductors feed through branch wiring. 1/2" and two 3/4" pry outs. Positioned to allow straight conduit runs. Access to junction box by removing reflector.

Socket

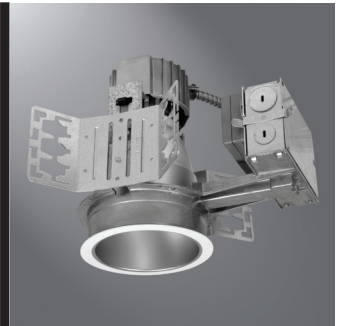
4-pin GX24q3 base for C4026 with fatigue free stainless steel lamp spring ensures positive lamp retention.

Electronic Ballast

Electronic ballast provides full light output and rated lamp life. Provides flicker free and noise free operation and starting. End of lamp life protection is standard.

Labels

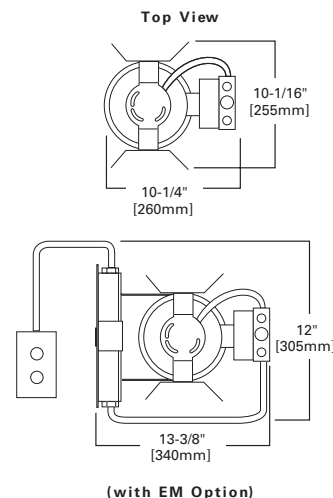
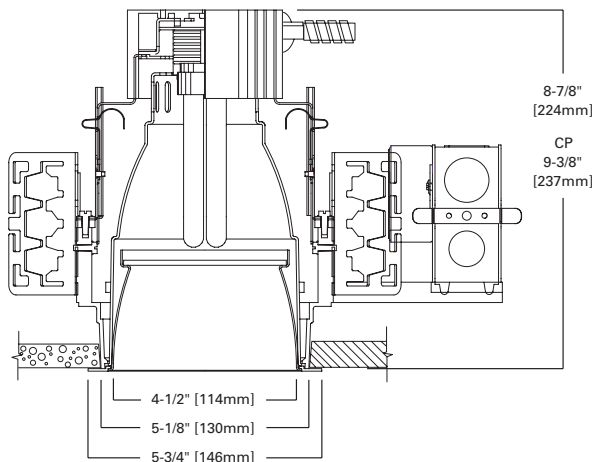
cULus listed, standard wet label.



**C4026
4080/4081**

**26W TTT
Compact Fluorescent**

4-Inch Lensed Downlight



ENERGY DATA	
26W TTT 4-pin	
Ballast: Electronic	
120V Input Watts: 29	Line Amps: 0.25
277V Input Watts: 29	Line Amps: 0.10
Power Factor: >0.99	THD: <10%
Min. Starting Temperature: -10°C (15°F)	
Sound Rating: Class A Standards	

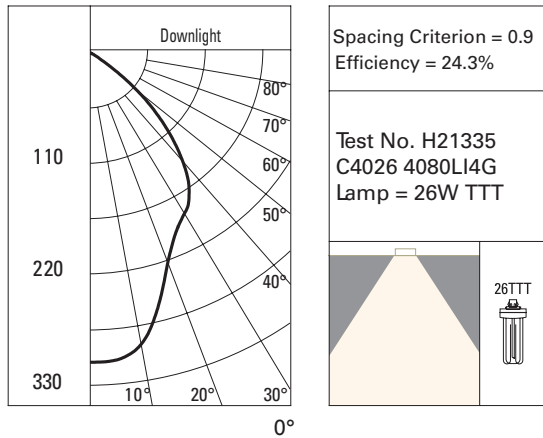
NOTES: Accessories should be ordered separately. For additional options, please consult your Cooper Lighting Representative. Alzak is a registered trademark of Aluminum Company of America.

EXAMPLE: C4026E 4080LI3G

Housing	Wattage	Ballast	Options	Trims	Finish	Lens	Options	Accessories
C40 =4" CF Vertical	26 =(1) 26W TTT Lamp	E =120/277V 50/60 Hz Electronic 3E =347V 50/60 Hz Electronic D5LT =120-277V Fifth Light (DALI Dimming) 3D5LT =347V Fifth Light (DALI Dimming) D =120-277V Dimming Lutron EcoSystem/ 3-Wire Control (Factory Wired for 3-Wire) DMARKVII =26W120-277V Advance MARK 7 1DMARKX =26W 120V Advance MARK 10 2DMARKX =26W 277V Advance MARK 10	CP =Chicago Plenum EM =Emergency Module with RemoteTest Switch	4081 =Lensed Reflector, Self-Flanged 4080 =Lensed Reflector, Molded Trim Ring	LI =Low Iridescent Clear H =Haze WMH =Warm Haze G =Gold WH =Wheat W =Gloss White GP =Graphite GPH =Graphite Haze BB =Black Baffle (4080 only) WB =White Baffle (4080 only)	1 =Prismatic Lens 2 =Diffuse Lens 3 =Clear Lens 1G =Prismatic Glass 2G =Diffuse Glass 3G =Clear Glass 4G =Fresnel Glass	WF =White painted Flange (self Flanged only)	HB26 =C Channel Bar Hangers, 26" Long, Pair HB50 =C Channel Bar Hangers, 50" Long, Pair FK5 =5 Amp Field Installable Fuse Kit 300V Max RMB-22 =Wood Joist Bar Hanger, 22" Long, Pair HSA4 =Slope Adapter for 4" Aperture Housings, Specify Slope

PHOTOMETRICS

Candlepower Distribution Curve



Cone of Light

Distance Fixture to Lighted Plane	Initial Footcandles at Nadir	Beam Diameter
4'0"	19	3'6"
6'0"	9	5'6"
7'0"	6	6'6"
8'0"	5	7'6"
9'0"	4	8'0"
10'0"	3	9'0"

Coefficients of Utilization

Ceiling Wall % RCR	80 %				70 %			50 %	
	70	50	30	10	50	30	10	50	10
Zonal cavity method -- floor reflectance = 20%									
0	29	29	29	29	28	28	28	27	27
1	27	26	26	25	26	25	25	25	24
2	26	24	23	22	24	23	22	23	21
3	24	22	20	19	22	20	19	21	19
4	22	20	18	17	20	18	17	19	17
5	21	18	17	15	18	16	15	18	15
6	19	17	15	14	17	15	14	16	14
7	18	16	14	13	15	14	12	15	12
8	17	14	13	11	14	13	11	14	11
9	16	13	12	10	13	12	10	13	10
10	15	12	11	10	12	11	10	12	10