

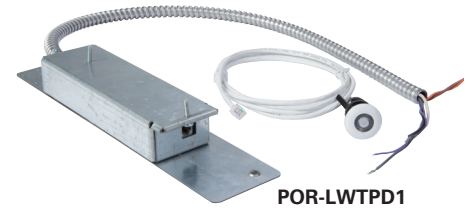
# Portfolio / Halo Commercial

## PORTFOLIO/HALO COMMERCIAL LUMAWATT PRO CONNECTED LIGHTING SYSTEM POWERED BY ENLIGHTED

LumaWatt Pro powered by Enlighted is an integrated system of luminaires, digital sensors, and application-based software for any size project. The strengths of LumaWatt Pro are based on the independent, secure operation of individual sensors in every lighting fixture, combined with wireless communication to the powerful Energy Manager. The system aggregates input from the project to provide visibility to entire aspects of environmental data, pushing the input into easy-to-read dashboards of analytic detail. The dashboards enable you to take additional action with the system to improve energy savings, master the use of the space, interact with heating, ventilation, and air-conditioning (HVAC) systems, and report on system modes to reduce maintenance. By collecting granular, real-time data from state-of-the-art integrated sensors and advanced, smart building solutions, you are in control.

### How it works:

- Recessed luminaires are field wired to accessory sensor kits, which provide lighting control and more as independent, fault-proof, resilient networks of powerful end-points. Sensors have profiles with all the variables for the application assigned once a configuration is set. The sensor will manage the fixture without connectivity to the system.
- Sensors gather data from four on-board inputs PIR occupancy light, temperature, and current use. Local processors and memory pull the information together and communicate wirelessly to gateways using easy installation and secure set up.
- Gateways communicate using industry-standard wired technology to the Energy Manager, for powerful, familiar dashboards of information tailored for easy use on a connected computer.
- Energy Managers connect to optional cloud-based applications, maximizing the dense, data-rich sensing within the footprint of the luminaire for management of the building environment, and much more.



POR-LWTPD1

## LUMAWATT PRO POWERED BY ENLIGHTED IN PORTFOLIO AND HALO COMMERCIAL RECESSED LUMINAIRES



Portfolio  
LD4B



Portfolio  
LDSQ4B



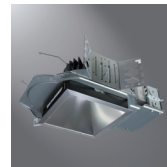
Portfolio  
LDA4A



Portfolio  
LDSQA4A



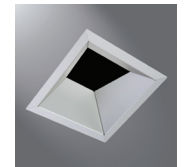
Portfolio  
LD6B



Portfolio  
LDSQ6B



Portfolio  
LDA6A



Portfolio  
LDSQA6A



Portfolio  
LD8A



Portfolio  
LSR4B/LSSQ4B



Portfolio  
LSR6B/LSSQ6B



Portfolio  
LSR8A/LSRWM8A

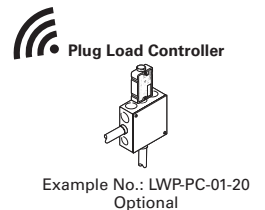
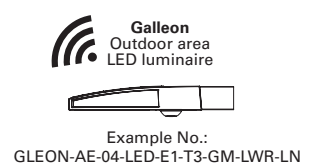
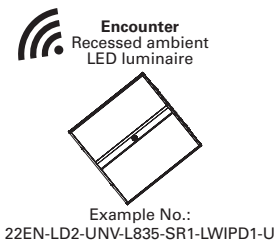
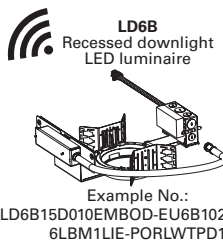
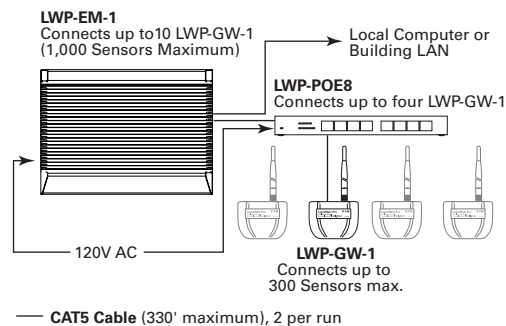


Halo Commercial  
PD6

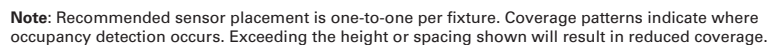


Halo Commercial  
PR8

## SYSTEM CONFIGURATIONS



**Note:** The minimum system requires at least one luminaire, one Gateway, a Power over Ethernet (POE) network, and one Energy Manager. Other components are optional, and the system is expandable. See System Planning and Extents table for more details. For additional details and the most current luminaire compatibility, see [www.eaton.com/lumawattpro](http://www.eaton.com/lumawattpro).



**Note:** Recommended sensor placement is one-to-one per fixture. Coverage patterns indicate where occupancy detection occurs. Exceeding the height or spacing shown will result in reduced coverage.

4. 7 feet low-voltage plenum rated cable included.