

## DESCRIPTION

The Conical shade is a shallow, truncated cone with open top and lensed bottom. The integrated LED light sources, available in 827, 830, 835 and 840 color choices, evenly illuminate the shade and bottom lens. Stem, canopy and finial finishes are available in painted options. Shaper's Fabrique Collection is known for its high quality hand-tucked fabrics, heavy gauge steel frame, laminated styrene backing and minimal internal structure. 3 sizes of shade allow this design to be used in a range of applications. More than 8 standard fabrics, as well as the ability to customize, allow a designer to select a look to match any pallet.

## SPECIFICATION FEATURES

### Material/Mounting

Cold-rolled steel frame and aluminum wire body, painted white. Matte white acrylic bottom diffuser with one finial, standard. Optional matte white acrylic top cover.

Single Stem (P1S): 5" diameter canopy with a self-aligning swivel. One 1/2" stem with a standard hang height of 24" (OA) for the 24" DIA, 30" (OA) for the 30" DIA and 36" (OA) for the 36" DIA, minimum 12" (OA) for the 24" DIA, 14" (OA) for the 30" DIA and 16" (OA) for the 36" DIA. Maximum overall hang height for one piece stem assembly is 8' (OA). 9' to 25' (OA) stems are supplied in multiple sections. Supplied ith a self-aligning swivel which will accommodate from 18°-30° (total) adjustment.

Single Stem Aircraft Cables (P1SAC): One 1/2" stem and 3-3/64" cables with a standard hang height of 24" (OA) for the 24" DIA, 30" (OA) for the 30" DIA and 36" (OA) for the 36" DIA, minimum 12" (OA) for the 24" DIA, 14" (OA) for the 30" DIA and 16" (OA) for the 36" DIA. Maximum overall hang height is 28' (OA).

### Finishes

ALP (Aluminum Paint)  
BM (Bronze Metallic)  
DP (Dark Platinum)  
GRM (Graphite Metallic)  
MB (Matte Black)  
MW (Matte White)  
CC (Custom Color – Specify)

For Custom Color contact factory for quotation.

### Shades

Solid cold-rolled steel construction. material on heavy translucent white styrene. All shades are "Hand-Tucked" except for vinyl options.

### Fabric

LAT (Linen Alabaster)  
LBS (Linen Biscuit)  
NGS (Nutmeg Shimmer)  
SIW (Silk White)  
SIY (Silk Ivory)

### Shantung Fabric

SWH (Shantung White)  
SEG (Shangtung Eggshell)  
SBG (Shangtung Beige)

### Vinyl Coated Fabric

ABR (Alabaster)  
NFX (Natural Flax)  
GHY (Golden Honey)

(NOTE: For humid environments such as shower rooms or open lobbies, Vinyl Coated Fabrics are recommended)

Catalog #		Type
Project		
Comments		Date
Prepared by		

### LED

24" and 30" L5:4000 nominal lumens at max 37W  
36" L9:8000 nominal lumens at max 72W

### Drive

Long-life LED system coupled with electrical driver to deliver optimal performance. Electronic drivers are available for 120-277V applications. A 0-10V dimming control is available (Standard) on all models

### Compliance

All Fabrique Collection products are UL and cUL approved for interior damp locations. All LED components in the Fabrique Collection are RoHS compliant and drivers conform to appropriate FCC regulations. Fabrique Collection Sconces meet ADA regulations.



## 144 SERIES

### Diameter: 24"

- Lumen Output Source Lumens: 4000
- Wattage: 40W
- Color Rendering: CRI 83+
- Correlated Color Temperature: 4000K, 3500K, 3000K, 2700K
- Rated Life of Lamp (hrs): 50,000
- Dimming: 0-10V
- Warranty: 5 year limited warranty on LED components

### Diameter: 30"

- Lumen Output Source Lumens: 4000
- Wattage: 40W
- Color Rendering: CRI 83+
- Correlated Color Temperature: 4000K, 3500K, 3000K, 2700K
- Rated Life of Lamp (hrs): 50,000
- Dimming: 0-10V
- Warranty: 5 year limited warranty on LED components

### Diameter: 36"

- Lumen Output Source Lumens: 8000
- Wattage: 76W
- Color Rendering: CRI 83+
- Correlated Color Temperature: 4000K, 3500K, 3000K, 2700K
- Rated Life of Lamp (hrs): 50,000
- Dimming: 0-10V
- Warranty: 5 year limited warranty on LED components

## ORDERING INFORMATION (SELECT FIXTURE AND SHADE KIT TO COMPLETE SPECIFICATION)

Fixture Number: 144-24-P1S-L5/827-UNV-MW-24

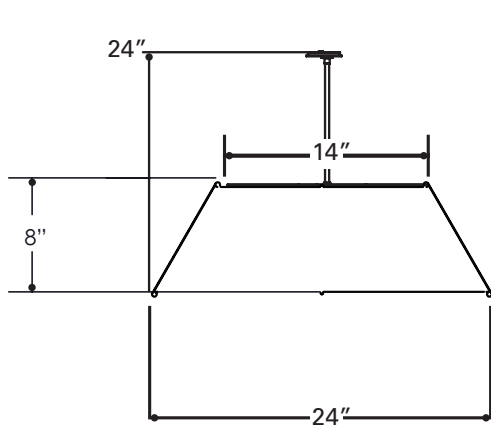
Series	Size	Mounting Type	LED Lamp			LED Voltage	Finish		Options	OA
144 = Conical Pendant <sup>1</sup>	24=24" 30=30" 36=36"	P1S P1SAC	24"	30"	36"	UNV (120-277V)	MW=Matte White MB=Matte Black BM=Bronze Metallic DP= Dark Platinum	ALP=Aluminum Paint GRM=Graphite Metallic CC=Custom Color - Specify	SCA= Sloped Ceiling Adapter <sup>2</sup> TC= White Acrylic Top Cover	24=24"OA <sup>3</sup> 30=30"OA <sup>4</sup> 36=36"OA <sup>5</sup>
			L5/827	L5/827	L9/827					
			L5/830	L5/830	L9/830					
			L5/835	L5/835	L9/835					
			L5/840	L5/840	L9/840					

Notes: <sup>1</sup> Fabric Kit is not included. Please specify Fabric Kit (below) to complete specification. <sup>2</sup> Specify up to 45. <sup>3</sup> Standard for the 24" DIA fixture. <sup>4</sup> Standard for the 30" DIA fixture. <sup>5</sup> Standard for the 36" DIA fixture.

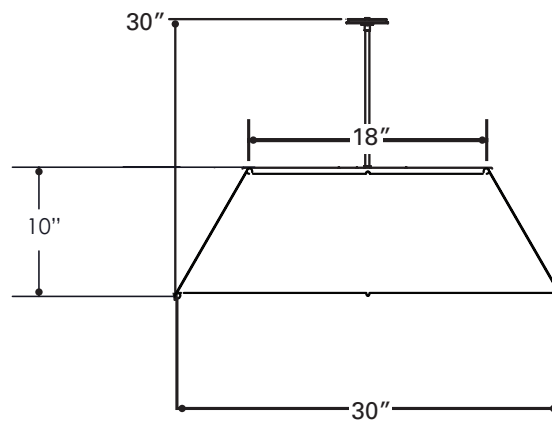
Shade Number: 144-24-SHD-SIW

Series	Size	SHD	Material		
144 = Conical Pendant	24=24" 30=30" 36=36"		Fabric SIW (Silk White) SIY (Silk Ivory) SWH (Shantung White) SEG (Shangtung Eggshell) SBG (Shangtung Beige)	Fabric LAT (Linen Alabaster) LBS (Linen Biscuit) NGS (Nutmeg Shimmer)	Vinyl Coated Fabric ABR (Alabaster Vinyl) NFX (Natural Flax Vinyl) GHY (Golden Honey Vinyl)

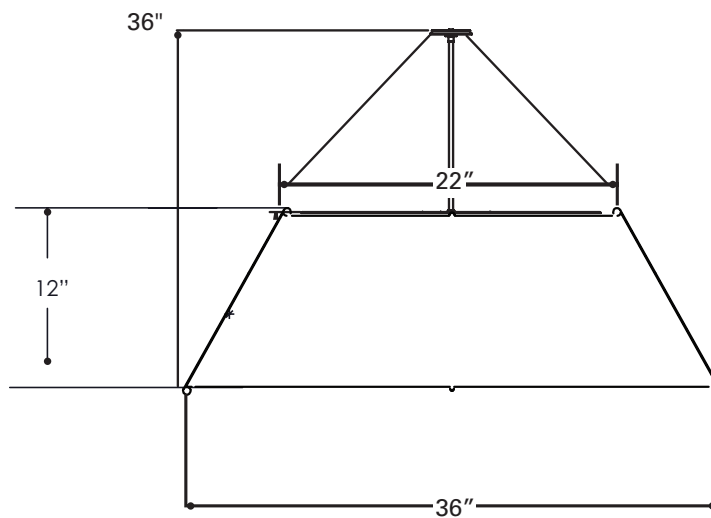
## DIMENSIONS



**144-24-P1S**  
**(SINGLE STEM)**

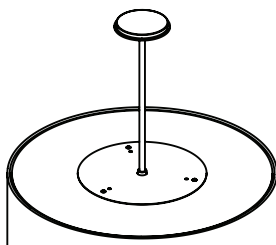


**144-30-P1S**  
**(SINGLE STEM)**

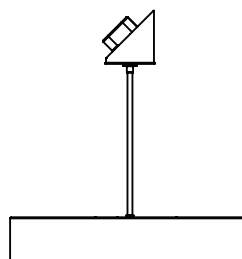


**144-36-P1S**  
**(SINGLE STEM)**

## OPTIONS



**TOP COVER (TC)**



**SLOPED CEILING  
ADAPTOR (SCA)**