

DESCRIPTION

340 Farallon LED Glass Recessed Luminaire features a 4" Portfolio Downlight with Twelve Glass options and two dimming options. New construction.

Catalog #		Type
Project		
Comments		Date
Prepared by		

SPECIFICATION FEATURES

Material

5mm thick, outer Cylindrical or Splayed Borosilicate Glass*. Available in clear, frosted or with Shaper's exclusive sandblasted patterns. Ground and polished bottom edge. Optional 2.3mm thick, Inner Fluted cylindrical Borosilicate Glass*. Available in clear or frosted. Ground and polished bottom edge. Portfolio recessed downlights are the LD4A09 and LD4A13. Refer to Portfolio specification sheets for additional details. Note that Shaper Farallon LED Glass Luminaire is provided complete from Shaper. *Borosilicate Glass - Contains 5% or more of B₂O₃, is highly resistant to heat and shock with low coefficients of expansion, which makes it heat-resistant.

Glass

Farallon Glass trims are hand-cut, hand-polished and hand-etched. It is an artisan process. No trims will be exactly alike and slight glass and pattern inconsistencies may occur.

See page 2 for glass options.

Optics

Two-stage reflector system produces smooth distribution with excellent light control and low aperture brightness.

LED

LED system contains a plurality of high brightness white LEDs combined with a high reflectance upper reflector and convex transitional lense producing even distribution with no pixilation. Rated for 50,000 hours at 70% lumen maintenance. Auto resetting, thermally protected, LEDs are turned off when safe operating temperatures are exceeded. Color variation within 3-step MacAdam ellipses. Available in 900 and 1300 lumen delivered packages, in 2700K, 3000K, 3500K, and 4000K color temperatures at 80 CRI.

Driver

Combination 120-277V 0-10V or 120V trailing edge phase cut driver provides flicker free dimming from 100% to 10%. Optional 1 to 100% Lutron Ecosystem.

Compliance

Thermally protected and U.L. and C.U.L. listed for damp location. EMI/RFI emissions per FCC 47CFR Part 18 Class B consumer limits. New construction, non-IC rated - Insulation must be kept 3" from top and sides of housing. RoHS Compliant. Title 24 2008 Compliant with designated trims, contact factory for details.



340-4 LED DL SERIES

Recessed LED Luminaire
4" Farallon
Glass Downlight

- Lumen output:
- 09 : 900 source lumens
- 13 : 1300 source lumens
- Wattage: 09: 14.1 W-900
13: 22.4W-1300
- Color Rendering: CRI 80
- Correlated Color Temperature 2700, 3000, 3500 or 4000 k
- Rated Life: 50,000 hrs
- Dimming 0-10 V
- Warranty: 5 year limited warranty on LED components.

ORDERING INFORMATION (SELECT FIXTURE AND FABRIC KIT TO COMPLETE SPECIFICATION)

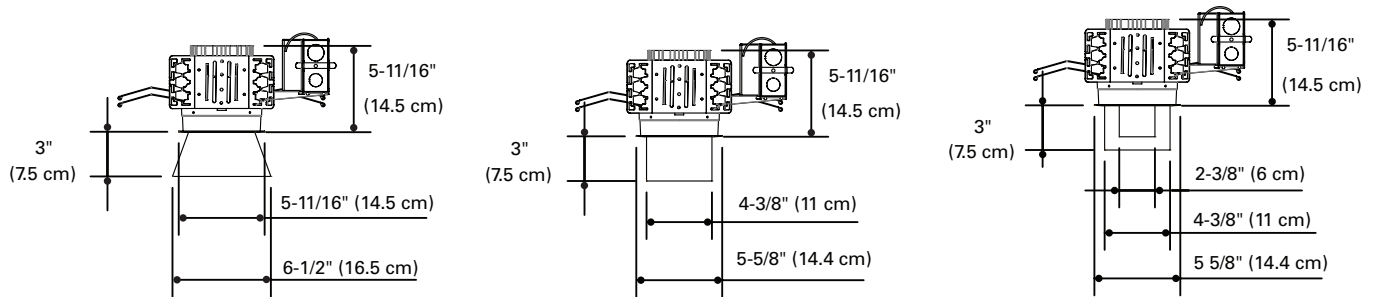
Sample Number: 340-6-DL-LED835/1/18-120V-SCSF-ERW6-SGPC-DMR7

Series	Light Level	Color Temp.	Voltage	Driver	Finish / Power Module	Glass Options	
340-S-DL = Recessed 6" Downlight	09= 900 Lumens 13= 1300 Lumens	827= 2700K 830= 3000K 835= 3500K 840= 4000K	UNV= Universal	D010TE=120- 277V 0-10V 10% Dimming or Trailing Edge 120 V Dimming DL3= 1 to 100% Dimming, 120- 277V Lutron® Hi- Lume, Ecosystem or 3 Wire	SCSF-ERW6=6" module for Wide Beam, Semi Specular Clear, Self Flanged Reflector	SGPC=Splayed Glass, Polished - Clear SGPF=Splayed Glass, Polished - Frosted CYC=Cylindrical Glass, Polished - Clear CYF-DVN=Cylindrical Glass, Polished - Frosted Division CYF-QDE=Cylindrical Glass, Polished-Frosted Quadrate CYF-CRT=Cylindrical Glass, Polished-Frosted Crossette	CYF-CTY=Cylindrical Glass, Polished-Frosted Cantenary CYF-SGL=Cylindrical Glass, Polished - Frosted Spangle GIG-FIFO=Glass-in-a-Glass, Polished-Frosted Inside, Frosted Outside GIG-FICO=Glass-in-a-Glass, Polished-Frosted Inside, Clear Outside GIG-CICO=Glass-in-a-Glass, Polished-Clear Inside, Clear Outside

Notes: ¹ Refer to LED details in Specification Features (one page 1) for actual wattages. ² A dimming driver is supplied standard, one must be selected to complete catalog number. ³ Source Lumens.

Energy Data			
Sound Rating: Class A standard			
(Values at non-dimming line voltage)			
Minimum Starting Temperature: -30° C (-22°F)			
EMI/RFI: FCC Title 47 CFR, Part 15, Class B (Consumer)			
Input Voltage: UNV (120V-277V)			
Power Factor: >0.90 (at nominal input 120-277 VAC & 100% of Rated Output Power)			
Input Frequency: 50/60 Hz			
1300 Lumen D010TE		900 Lumen D010TE	
Input Power: 22.4 W	THD: <20%	Input Power: 14.1 W	THD: <20%
120V Input Current: .12A	277V Input Current: .09A	120V Input Current: .12A	277V Input Current: .06A

DIMENSIONS

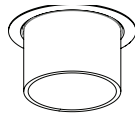


340-4-LED-SGPC or SGPF

340-4-LED-CYC or CYF

340-4-LED-GIG

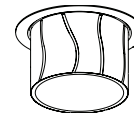
GLASS OPTIONS



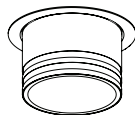
340-4-CYC OR CYF
(CYLINDRICAL GLASS,
POLISHED - CLEAR OR FROSTED)



340-4-CYF-CRT
(CYLINDRICAL GLASS,
POLISHED - FROSTED CROSSETTE)



340-4-CYF-CTY
(CYLINDRICAL GLASS,
POLISHED - FROSTED CATENARY)



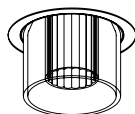
340-4-CYF-DVN
(CYLINDRICAL GLASS,
POLISHED - FROSTED DIVISION)



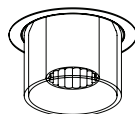
340-4-CYF-QDE
(CYLINDRICAL GLASS,
POLISHED - FROSTED QUADRATE)



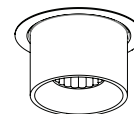
340-4-CYF-SGL
(CYLINDRICAL GLASS,
POLISHED - FROSTED SPANGLE)



340-4-GIG-CICO
(CYLINDRICAL GLASS-IN-A-GLASS
POLISHED - CLEAR INSIDE,
CLEAR OUTSIDE)



340-4-GIG-FICO
(CYLINDRICAL GLASS-IN-A-GLASS
POLISHED - FROSTED INSIDE,
CLEAR OUTSIDE)



340-4-GIG-FIFO
(CYLINDRICAL GLASS-IN-A-GLASS
POLISHED - FROSTED INSIDE,
FROSTED OUTSIDE)



340-4-SGPC OR SGPF
(SPRAYED GLASS
POLISHED - CLEAR OR FROSTED)