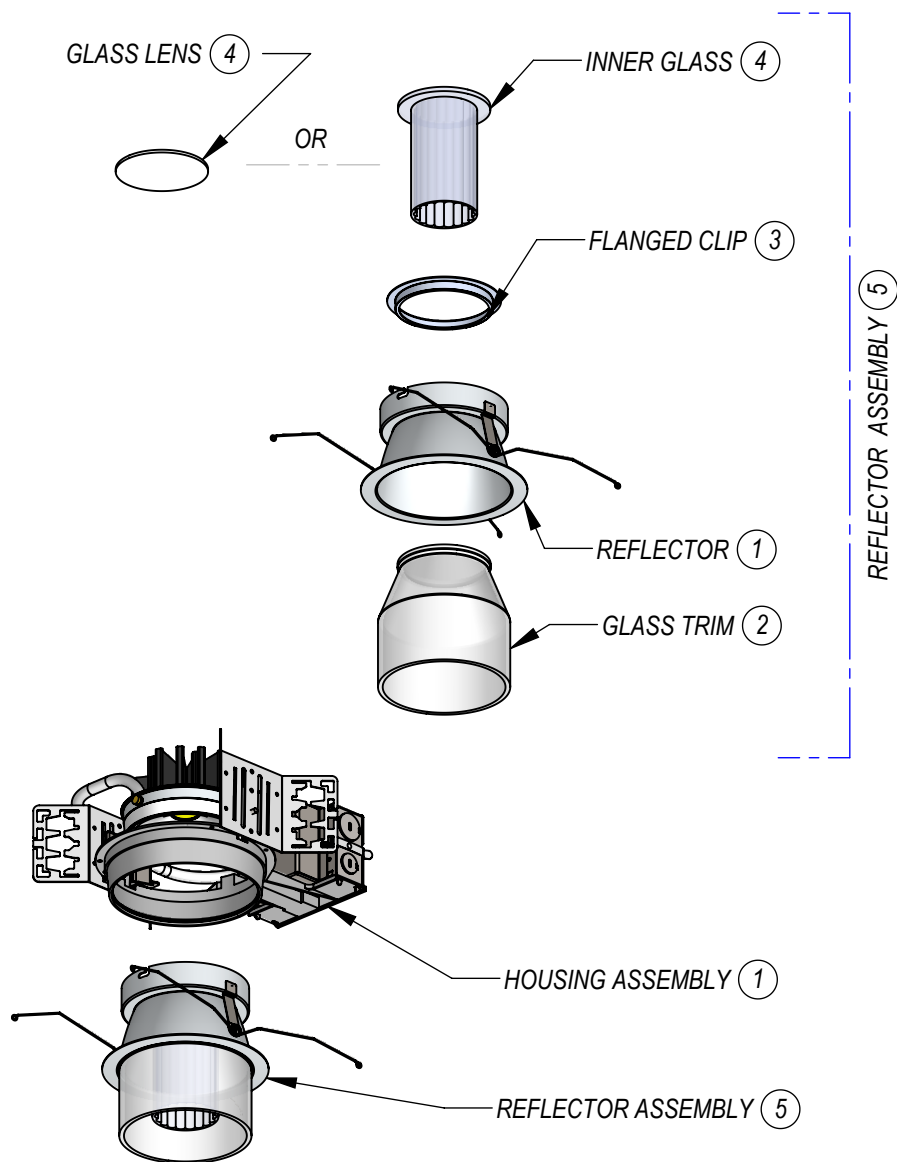


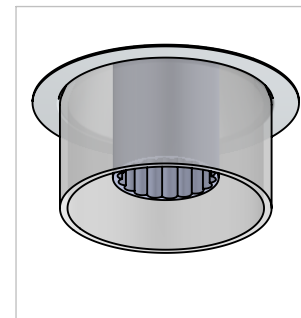
# INSTALLATION INSTRUCTIONS

ANY ISSUES WITH INSTALLATION REQUIRES IMMEDIATE CALLS TO SHAPER



## NOTICE:

- ☐ For proper installation, have a qualified electrician install this product.
- ☐ Before installation of any luminaire onto an electrical junction box, be sure to disconnect power.
- ☐ This luminaire must be wired and grounded in accordance with the National Electrical Code, local codes, and ordinances.
- ☐ Wire supply connections must be made with U.L. approved connectors.
- ☐ Check that luminaire voltage and building voltage are the same.



340-LED

## CAUTION:

EXERCISE SPECIAL CARE AND SAFETY WHILE INSTALLING AND SERVICING LUMINAIRE. USE OF SOFT GLOVES AND PADDED MATERIALS ARE RECOMMENDED DURING HANDLING TO AVOID MARRING THE FINISH.

## INSTRUCTIONS:

0. Make sure power to fixture is turned off.
1. Follow installation instructions shipped with housings to install housing and REFLECTOR.
2. Insert GLASS TRIM from bottom of REFLECTOR.
3. Secure GLASS TRIM to REFLECTOR using FLANGED CLIP.
4. Insert either GLASS LENS or INNER GLASS to cover GLASS TRIM.
5. Insert REFLECTOR ASSEMBLY into HOUSING ASSEMBLY.
6. Turn power on to test installation.