

DESCRIPTION

673-WP Luminous wall source features 6 standard finishes, 2 decorative trim bar options and is ADA compliant.

Catalog #		Type	
Project			
Comments		Date	
Prepared by			

SPECIFICATION FEATURES

Material

Painted solid aluminum with a 1/8" matte white extruded acrylic panel. Open bottom and enclosed top. Luminous top and bottom for LED

Finishes

ALP (Aluminum Paint)
MW (Matte White)
MB (Matte Black)
GRM (Graphite Metallic)
DP (Dark Platinum)
BM (Bronze Metallic)
CC (Custom Color – Specify)
For Custom Color contact factory for quotation.

LED

16" L3:2000 nominal lumens at max 20W
37" L3:2000 nominal lumens at max 20W
25" L4:3000 nominal lumens at max 29W

Driver

LED system coupled with electrical driver to deliver optimal performance. Electronic drivers are available for 120-277V applications. A 0-10V dimming control is available (Standard) on all models

Standard integral class 2 driver
29W max., 0-10V dimming.

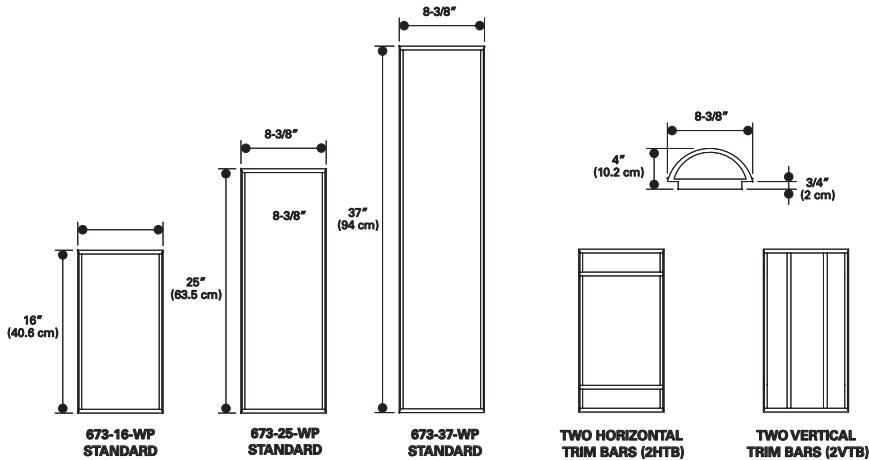
Options

Two Horizontal Trim Bars (2HTB)
Two Vertical Trim Bars (2VTB)
Remote Battery Pack (RBP)
5' Max Distance - Must be Interior Mounted

Compliance

U.L. and C.U.L. listed for wet location. ADA compliant, except with proud trim options.

DIMENSIONS



673-WP SERIES

Diameter: 16"

- Lumen Output Source Lumens: L3:2000 nominal lumens
- Wattage: 20W
- Color Rendering: CRI 83+
- Correlated Color Temperature: 4000K, 3500K, 3000K, 2700K
- Rated Life of Lamp (hrs): 50,000
- Dimming: 0-10V
- Warranty: Warranty: 5 year limited warranty on LED components

Diameter: 25"

- Lumen Output Source Lumens: L3:2000 nominal lumens
- Wattage: 20W
- Color Rendering: CRI 83+
- Correlated Color Temperature: 4000K, 3500K, 3000K, 2700K
- Rated Life of Lamp (hrs): 50,000
- Dimming: 0-10V
- Warranty: Warranty: 5 year limited warranty on LED components

Diameter: 37"

- Lumen Output Source Lumens: L4:3000 nominal lumens
- Wattage: 29W
- Color Rendering: CRI 83+
- Correlated Color Temperature: 4000K, 3500K, 3000K, 2700K
- Rated Life of Lamp (hrs): 50,000
- Dimming: 0-10V
- Warranty: Warranty: 5 year limited warranty on LED components

ORDERING INFORMATION

Fixture Number: 673-16-WP-L3/827-UNV-ALP

Series	Size	Mounting Type	LED Lamp			LED Voltage	Finish	Options
			16"	25"	37"			
673 = Luminous Half Cylinder	16=16" 25=25" 37=37"	WP=Exterior Wall	L3/827	L3/827	L4/827	UNV (120-277V)	ALP=Aluminum Paint MW=Matte White MB=Matte Black DP= Dark Platinum GRM=Graphite Metallic BM=Bronze Metallic CC=Custom Color - Contact factory for quotation	2VTB=Two vertical Trim Bars 2HTB=Two Horizontal Trim Bars RBP= Remote Battery Pack (5' Max Distance) Battery Must Be Remote Mounted In An Interior Location
			L3/830	L3/830	L4/830			
			L3/835	L3/835	L4/835			
			L3/840	L3/840	L4/840			