

- Step 3.** Mount the unit securely in place through the four holes provided in the housing.
- Step 4.** Make conduit connections using Allen-Bradley series 1490 connectors or other UL listed suitable for wet location connector. See "INSTALLATION OF CONDUIT, CONDUIT CONNECTOR (HUB) AND GROUNDING ADAPTER."
- Step 5.** Extend unswitched 24 hour supply of rated voltage and connect as shown in figure 2 (277V orange, 120V black, odd voltages brown, [in place of orange and black], neutral white). Insulate any unused leads. Connect ground in accordance with N.E.C. or local codes.
- Step 6.** If remote lamps are to be connected, extend DC circuit per article 700 and 720 of N.E.C. and connect to yellow and violet leads provided.
- Step 7.** Connect red(+) and blue(-) leads from PC board to battery(s). Lamps will not light at this time.
- Step 8.** Replace cover.
- Step 9.** Turn on AC supply.
- Step 10.** If a power supply cord is to be used, make connection with a Daniel Woodhead Max-Lock Cord Sealing Grip or other suitable UL listed liquid tight connector.

INSTALLATION OF CONDUIT, CONDUIT CONNECTOR (HUB) AND GROUNDING ADAPTER.

Conduit hubs and grounding adapters selected from Table 1 provide a means to comply with equipment grounding requirements.

- Step 1.** Prepare conduit holes in enclosure at the desired location using preferred methods such as hole cutter or hole saw (see table for hole size). When using the hole cutter, place the punch on the inside of the enclosure and draw it through to the outside.

IMPORTANT: In order to guard against enclosure damage, the conduit should be aligned so as to prevent unnecessary stress on the enclosure walls.

- Step 2.** Secure the conduit connector (hub) onto the conduit and then secure conduit connector (hub) into the prepared enclosure hole using connector locknut.

- Step 3.** Install the grounding adapter (See fig. 1) so that the wiring terminal is accessible after installation.

IMPORTANT: To complete the bonding between the grounding bushings or between the grounding bushings and the equipment grounding terminals (when provided), bonding must be provided in accordance with all applicable codes.

MAINTENANCE

Replace batteries every 12 to 15 years according to ambient. Equipment should be tested regularly in accordance with local codes.

NOTE: Servicing of any parts should be performed by qualified service personnel. For replacement lamps, battery or PC board, see fixture labels.

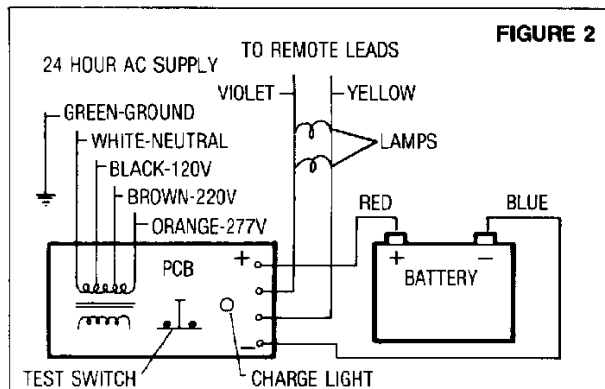
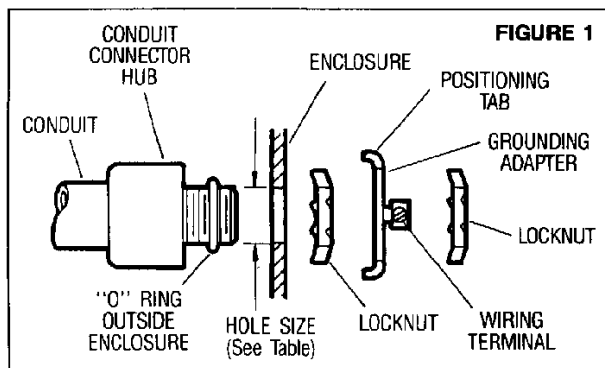


TABLE 1

Conduit Size	Conduit Connector (Hub)		Grounding Adapter	
	Hole Size	Catalog Number	Catalog Number	Ground Wire Range
1/2"	7/8"	1490-N1	1490-N19	14-10
3/4"	1 1/4"	1490-N9	1490-N20	14-8

OPERATION

1. To test, depress test switch. DC lamps will come on.
2. Release test switch. DC lamps will extinguish.

CAUTION: The UMB Series Emergency Light is furnished with a sophisticated low voltage battery dropout circuit to protect the battery from over discharge after the useful output has been reached. Allow 24 hours recharge time after installation or power failure for full load testing.

TROUBLESHOOTING GUIDE

EMERGENCY LAMP DOES NOT COME ON — PILOT LIGHT OUT BEFORE TEST:

Check AC supply. Be certain that unit has 24 hour AC supply.

PILOT LIGHT ON — LAMPS DO NOT LIGHT:

Either output shorted or battery not connected.

EMERGENCY LAMPS COME ON DIM:

Battery discharged. Permit unit to charge for 24 hours and then retest. If lamp is still dim, check charger for charger function, if functioning properly, replace battery.

If following the above trouble shooting hints does not resolve your problem, contact your local Sure-Lites Representative or consult the factory for assistance.



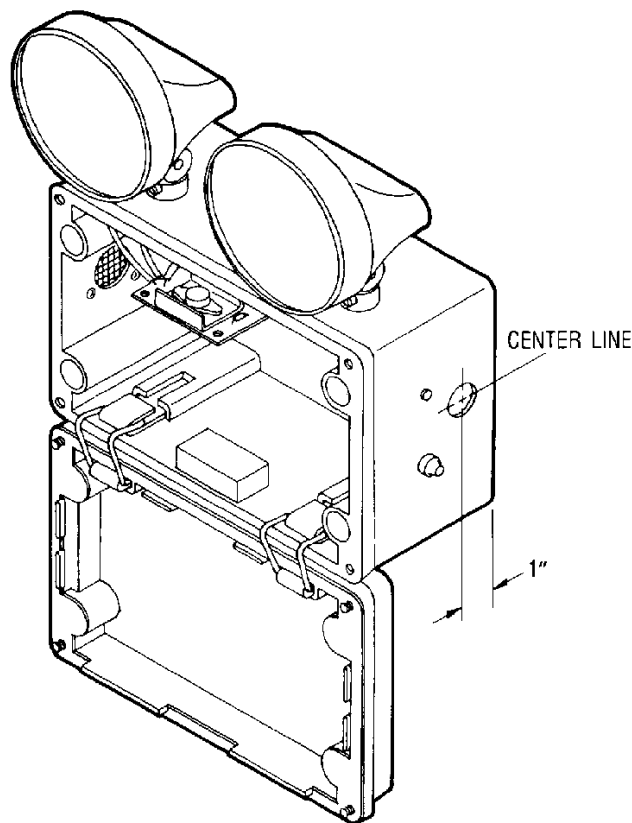
HALO LIGHTING

Sure-Lites
400 Busse Road
Elk Grove Village, Illinois 60007

049-13-B

SURE-LITES

UMB Series



IMPORTANT SAFEGUARDS

When using electrical equipment, basic safety precautions should always be followed including the following:

1. Read and follow all safety instructions.
2. Do not use outdoors.
3. Do not let power supply cords touch hot surfaces.
4. Do not mount near gas or electric heaters.
5. Equipment should be mounted in locations and at heights where it will not readily be subjected to tampering by unauthorized personnel.
6. The use of accessory equipment not recommended by *Sure-Lites* may cause an unsafe condition.
7. Do not use this equipment for other than its intended purpose.
8. Some equipment covered by these instructions are approved for remote fixtures. This equipment does not require a load fuse because its sophisticated solid state transfer switch is current limited. Check load rating of equipment to calculate remote capability. DO NOT exceed TOTAL OUTPUT RATING of equipment. TRANSFER CIRCUIT will automatically shut down if overloaded.
9. Caution: Halogen cycle lamp(s) may be used in this equipment. To avoid shattering: Do not operate lamp in excess of rated voltage, protect lamp against abrasion and scratches and against liquids when lamp is operating, dispose of lamp with care.
10. Halogen cycle lamps operate at high temperatures. Do not store or place flammable materials near lamp.
11. **SAVE THESE INSTRUCTIONS.**

CAUTION: To avoid possible electrical shock, be sure that power supply is turned off before installing or servicing this unit.

INSTALLATION

- Step 1.** Loosen the four screws at corners of cover and open cover.
- Step 2.** Drill a conduit hole on either side of housing one inch from the back surface and approximately centered. If remote lamps are to be utilized, it will be necessary to drill a conduit hole on each side.



HALO LIGHTING

Sure-Lites
400 Busse Road
Elk Grove Village, Illinois 60007

049-13-B