

## DESCRIPTION

Series 70 is part of an aesthetically-pleasing family of perimeter wall lighting systems that work in harmony with well designed architectural elements. The continuous fixture runs are field adjusted to adapt to ceiling conditions. There are no visible joints or hardware. The wall angle is heavy extruded aluminum, floating away from the wall. The adjustable fascia is heavy gauge steel, double formed "U" shaped, rigid, straight, and true with a 3/8" regress soft lit edge.

Note: Fixtures shall be installed before ceiling.

Catalog #	Type
Project	
Comments	Date
Prepared by	

## SPECIFICATION FEATURES

### A ... Construction

20-gauge steel housing sections in 3', 4', 6' and 8' lengths.

### B ... Shielding

Acrylic diffuser, prismatic lens. Parabolic or bold baffle.

### C ... Electrical

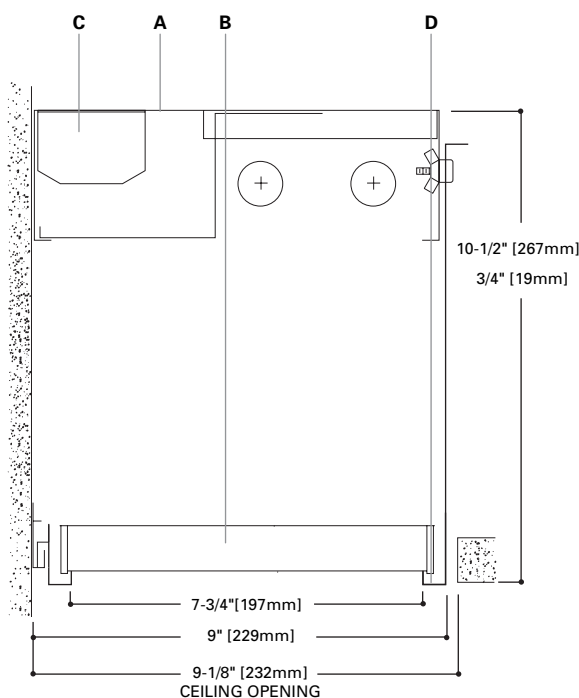
120, 277, 347 or Universal Voltage electronic ballast. Fixtures and electrical components certified to UL and CUL standards. Note: Please consult factory, Fifthlight may not be available in some configured options.

### D ... Finish

Durable, low gloss, white, powder coated acrylic finish.

### Mounting

Recessed.



**70**

1 & 2T8  
1 & 2T5  
1 & 2T5HO

**Perimeter  
Wall Wash**

### Light Distribution:

Indirect - 0.0%  
Direct - 100.0%



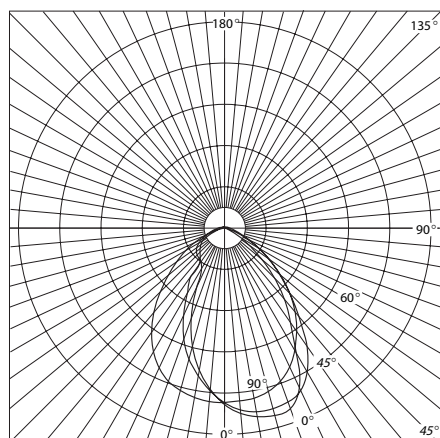
## ORDERING INFORMATION

Sample Number: 70-2T8-48R-1EB-SI-S58

Series	Number of Lamps (Not included)	Run Length Overall Nominal Run Length ____ ft.	Voltage <sup>1</sup>	Wiring	Fusing	Shielding
70: Perimeter	1: 1 Lamp 2: 2 Lamps	Individual or Run D: Individual R: Continuous Run	1: 120V 2: 277V 3: 347V U: Universal	C: Standard Circuit D: Dimming	GLR GMF	S22: White Acrylic Diffuser S58: KSH-12 Acrylic Lens S72: White Bold Baffle S79: Semi-Specular Aluminum Parabolic Baffle
	Lamp Type T8 T5 T5HO		Ballast EB: Electronic Ballast (Standard) DB: Dimming Ballast			

Notes: 1 Not all options available. Please consult your Cooper Lighting Representative for availability.

## PHOTOMETRICS



**70-2T12-S79-8'**  
 (2) F40T12RS/WW  
 3200 Lumens  
 Efficiency 39.7%  
 Test Report  
 #4384.0

## Coefficients of Utilization

Effective floor cavity reflectance								20%		
rc	80%				50%			30%		
rw	70	50	30	10	50	30	10	50	30	10
RCR										
1	44	43	42	41	41	40	39	39	38	38
2	42	39	37	36	37	36	34	36	35	34
3	39	37	37	31	37	36	34	33	31	30
4	36	33	33	31	34	32	31	30	28	27
5	34	30	27	25	28	26	24	28	26	24
6	31	27	24	22	26	24	22	25	23	22
7	29	25	22	20	24	21	19	23	21	19
8	27	22	19	17	22	19	17	21	17	15
9	25	20	17	15	20	17	15	19	17	15
10	23	19	16	14	18	16	14	18	15	14

## Zonal Lumen Summary

Zone	Lumens	%Lamp	%Fixture
0-30	1087	8.5	21.4
0-40	3287	25.7	64.7
0-60	4760	37.2	93.8
0-90	5076	39.7	100.0
0-120	5076	39.7	100.0
0-180	5076	39.7	100.0

Total Luminaire Efficiency = 39.7%

## Candela

Angle	Along $\parallel$	45°	Across $\perp$
0	3035	3035	3035
5	3215	3180	3041
10	3270	3197	3003
15	3339	3204	2934
20	3382	3205	2831
25	3108	3093	2630
30	2571	2911	2423
35	1980	2489	2194
40	1424	2010	1934
45	976	1397	1546
50	847	986	1252
55	645	661	906
60	475	449	464
65	304	252	145
70	163	100	60
75	81	47	32
80	27	30	22
85	24	22	13
90	0	0	0

## RUN AND PATTERNS

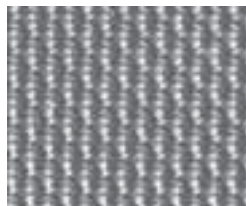
PATTERNS ARE PROVIDED IN 1FT. INCREMENTS PLUS FILL-IN SECTION, FIELD CUT TO SUIT

9" X 9" CORNER BOX  
 PATTERNS ARE PROVIDED IN 1FT. INCREMENTS PLUS FIELD CUT FILL-IN SECTION AND MITERED CORNER

## SHIELDING INFORMATION



**S22 Acrylic Diffuser**  
 3/16" thick, matte white finish with mullion, no light leaks.



**S58 Acrylic Lens**  
 1/8" thick, clear acrylic prismatic lens.



**S72 Bold Baffle**  
 1" high x 1.2" o.c., 3/16" thick aluminum baffle, continuous and unbroken, no visible joints.



**S79 Parabolic Baffle**  
 1-1/4" high blades. 2.4" o.c., semi-specular lo-brightness Pearlescent aluminum baffle. Continuous and unbroken, no visible joints.