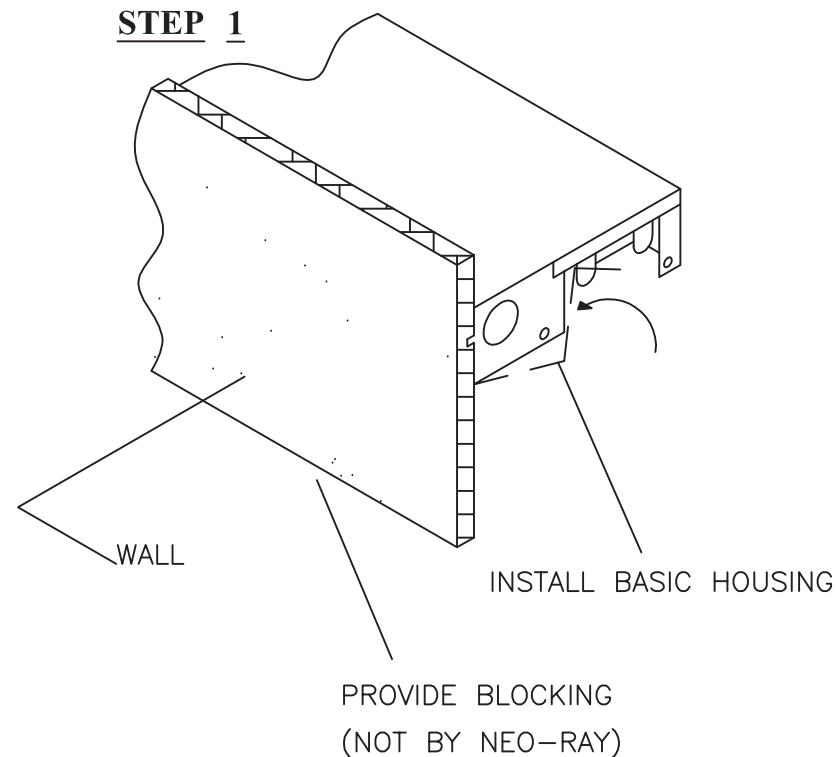
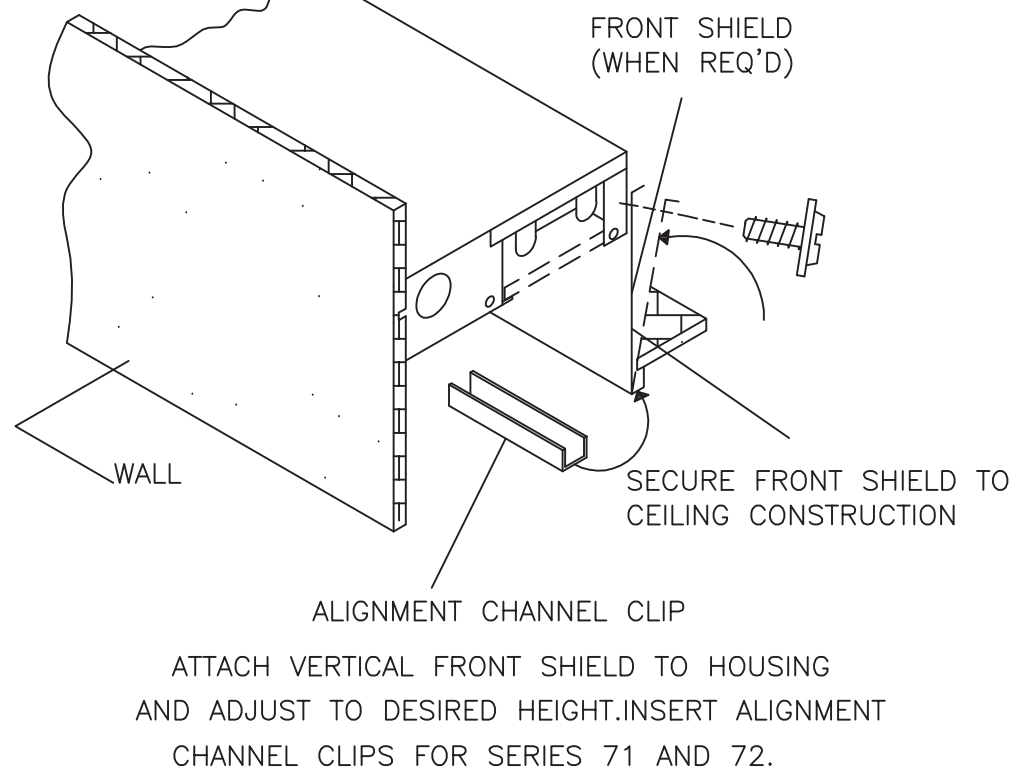


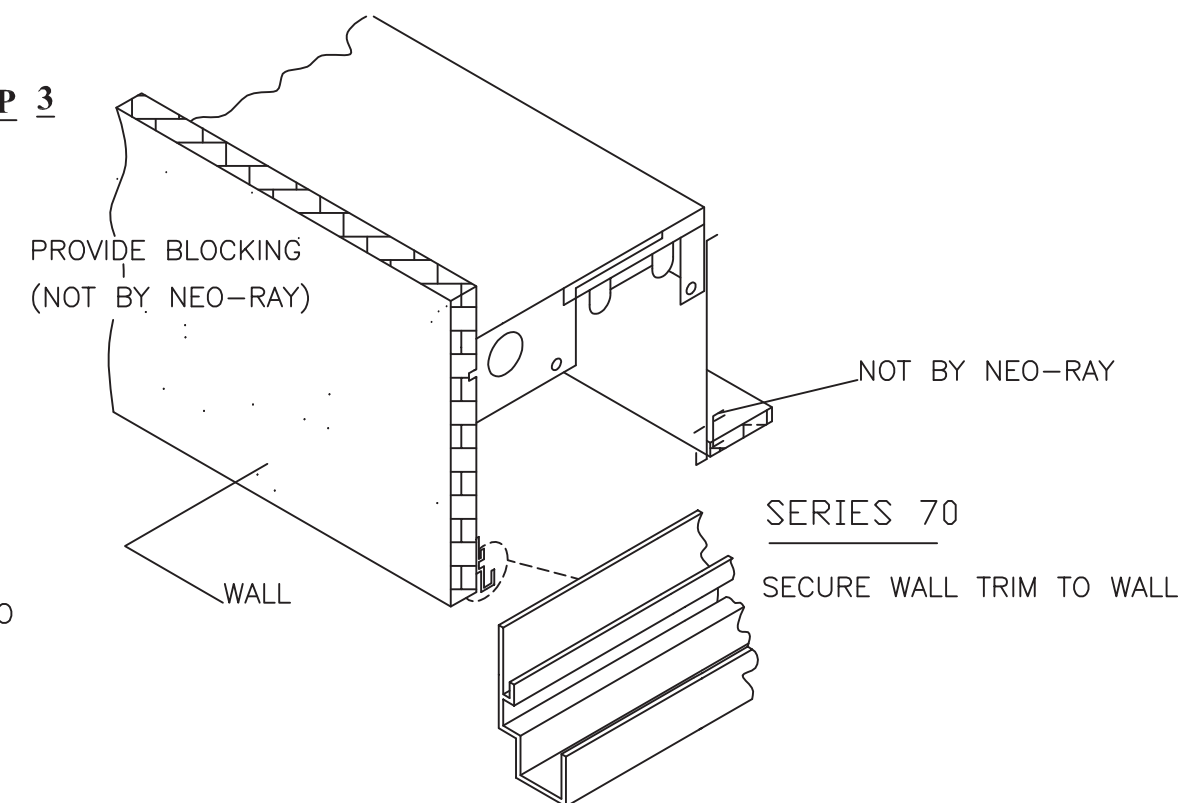
STEP 1



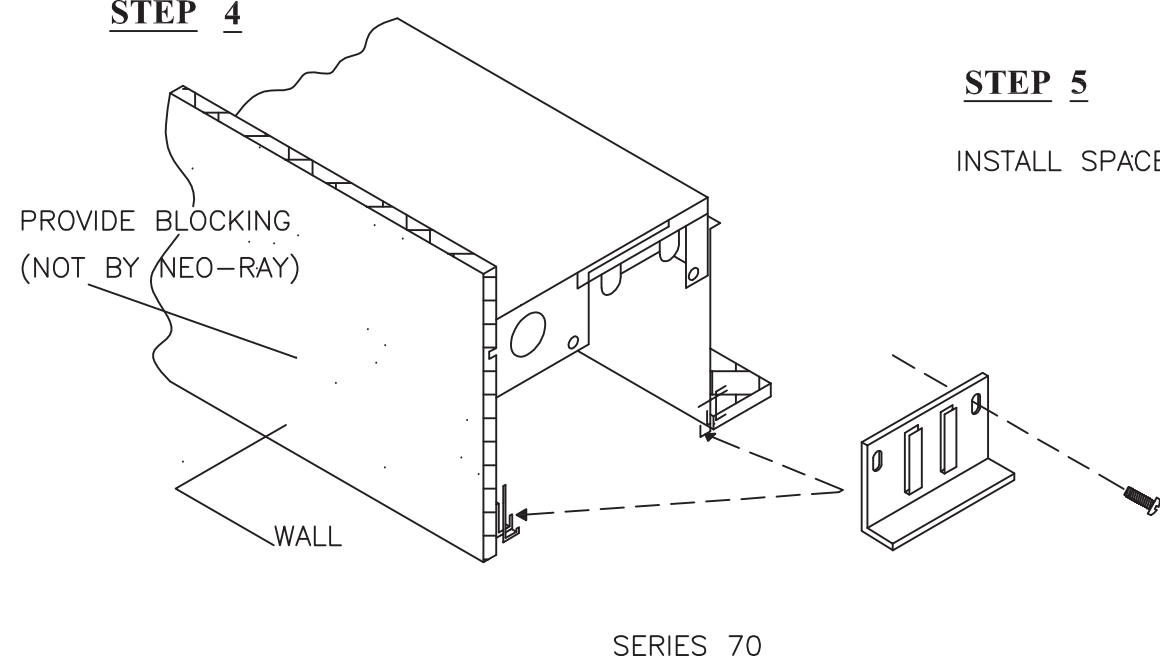
STEP 2



STEP 3

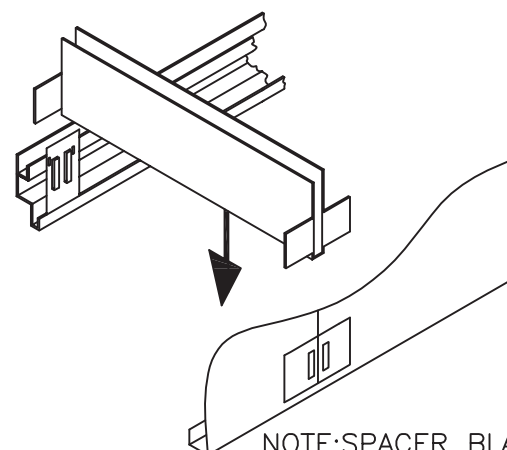


STEP 4

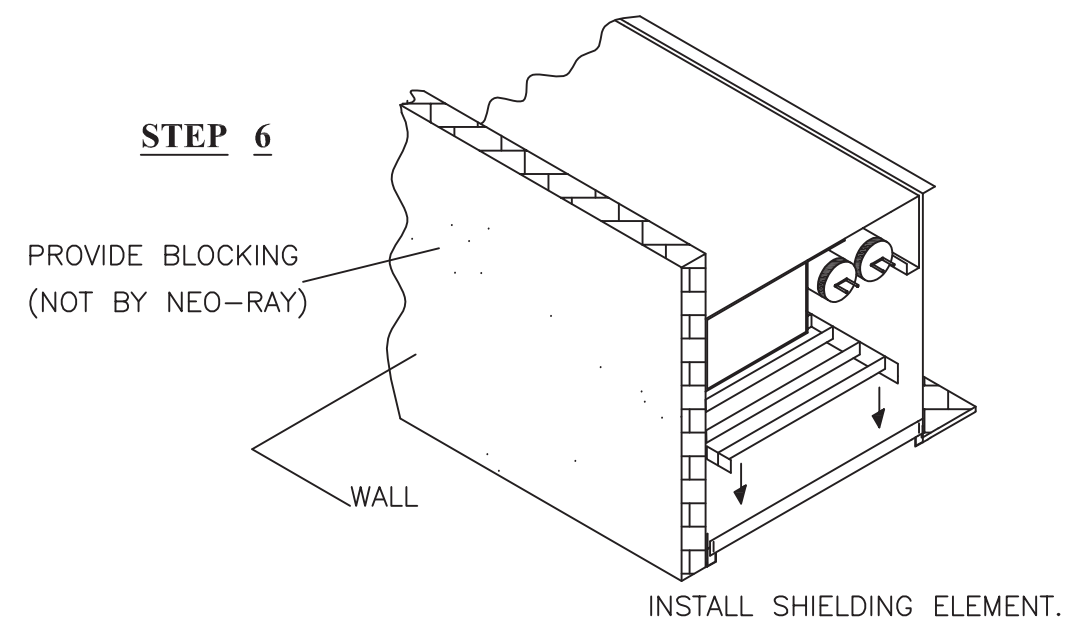


STEP 5

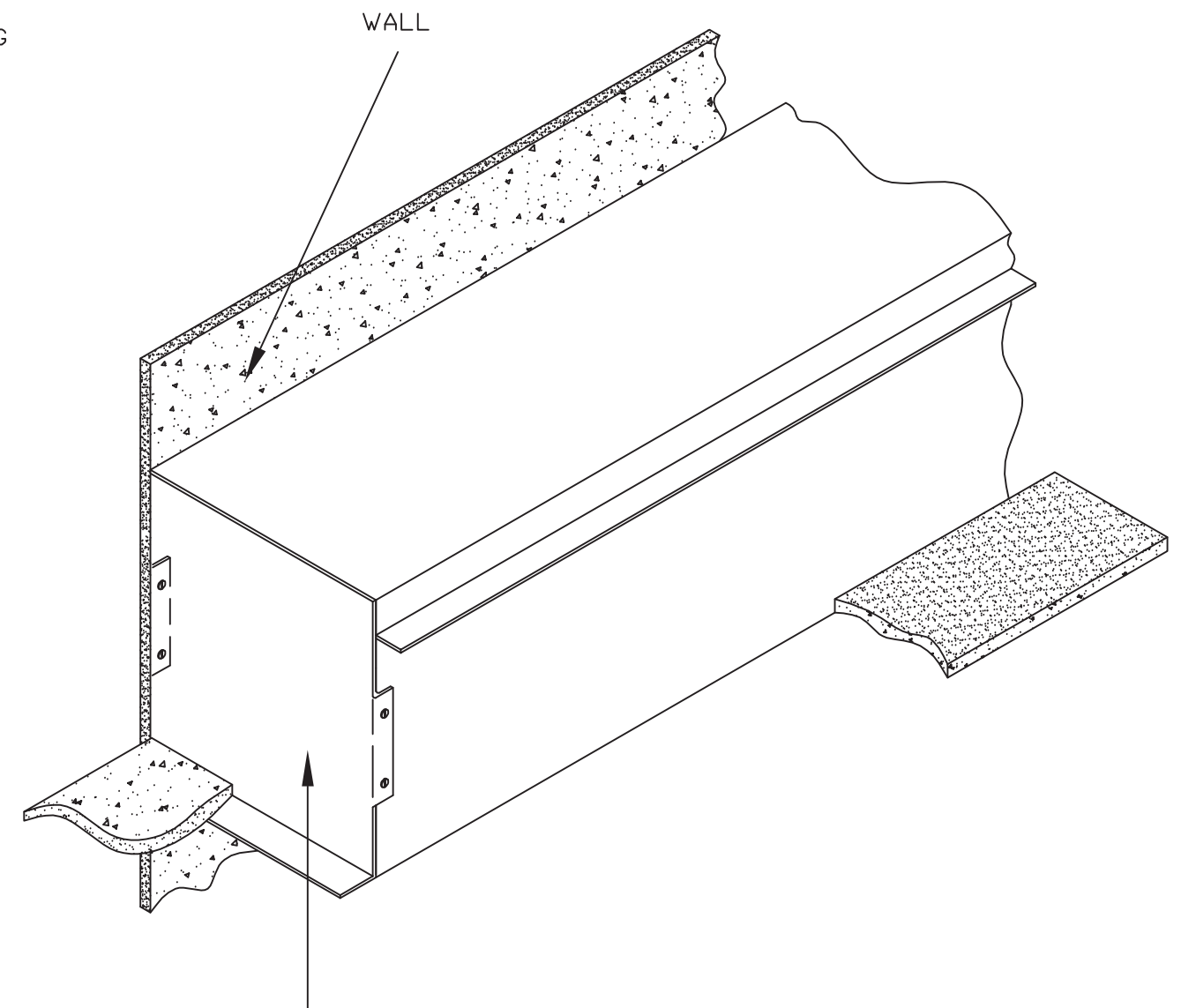
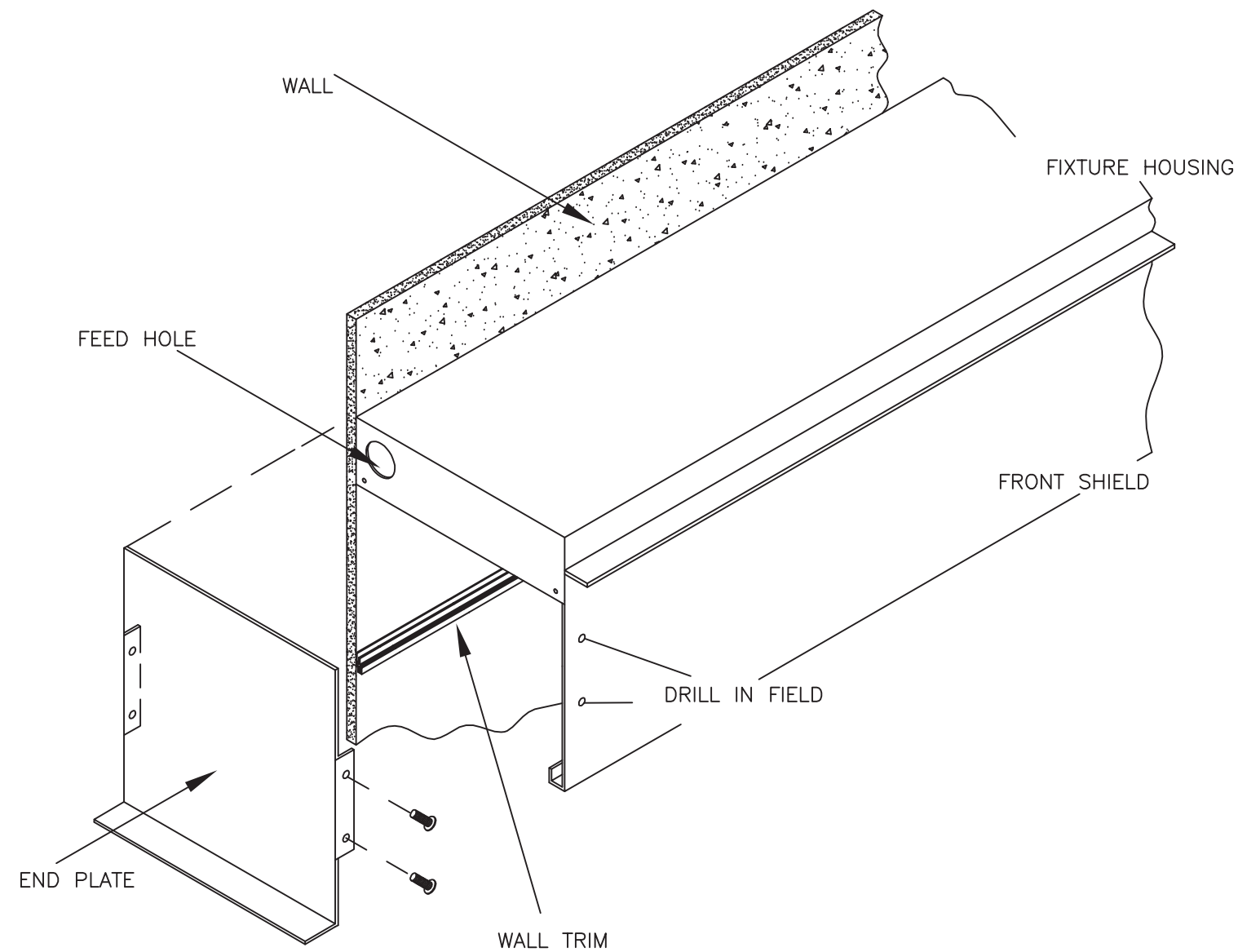
INSTALL SPACER BLADE AT EVERY ALIGNMENT CLIP.



STEP 6



SECURE ALIGNMENT CLIP TO FRONT SHIELD
AND WALL TRIM.
CENTERED ON JOINT LINE AND AT CENTER OF
6FT. AND 8FT. FIXTURES AND AT LAMP ENDS OF
5FT. AND 7FT. FIXTURES.



TO INSTALL END PLATE

1. END PLATE MUST BE INSTALLED BEFORE COMPLETION OF CEILING.
2. ALIGN END PLATE WITH BOTTOM OF WALL ANGLE AND FRONT SHIELD AS SHOWN.
3. DRILL MOUNTING HOLES IN FRONT SHIELD.
4. SCREW END PLATE TO WALL AND CEILING SIDE OF FRONT SHIELD.
5. IF REQUIRED TRIM TOP OF END PLATE FLUSH WITH TOP OF FIXTURE HOUSING.
6. COMPLETE CEILING INSTALLATION.