

DESCRIPTION

Series 71 is part of an aesthetically-pleasing family of perimeter wall lighting systems that work in harmony with well designed architectural elements. The continuous fixture runs are field adjusted to adapt to ceiling conditions. There are no visible joints, mullions, or hardware. The wall angle is heavy extruded aluminum, floating away from the wall. The adjustable fascia is heavy gauge steel, double formed "U" shaped, rigid, straight, and true with a 3/8" regress soft lit edge. Note: Fixtures shall be installed before ceiling.

Catalog #		Type
Project		
Comments		Date
Prepared by		

SPECIFICATION FEATURES

A ... Construction

20-gauge steel housing sections in 3', 4', 6' and 8' lengths.

B ... Shielding

Clear prismatic lens, lateral baffle.

C ... Electrical

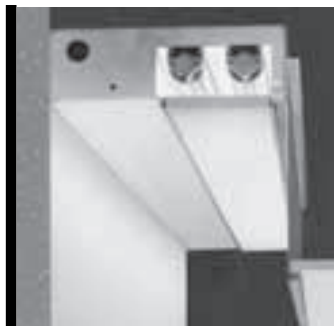
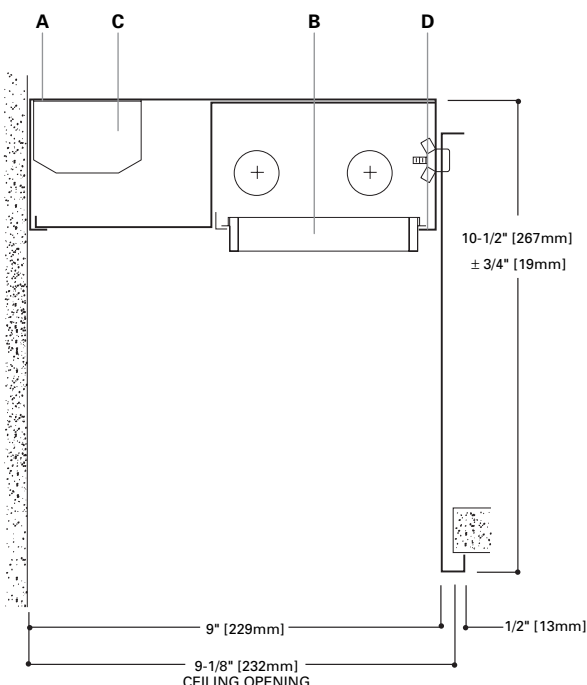
120, 277, 347 or Universal Voltage electronic ballast. Fixtures and electrical components certified to UL and CUL standards. Note: Please consult factory, Fifthlight may not be available in some configured options.

D ... Finish

Durable, low gloss, white, powder coated acrylic finish.

Mounting

Recessed.



71

1 & 2T8
1 & 2T5
1 & 2T5HO

**Perimeter
Wall Wash**

Light Distribution:

Indirect - 0.0%
Direct - 100.0%

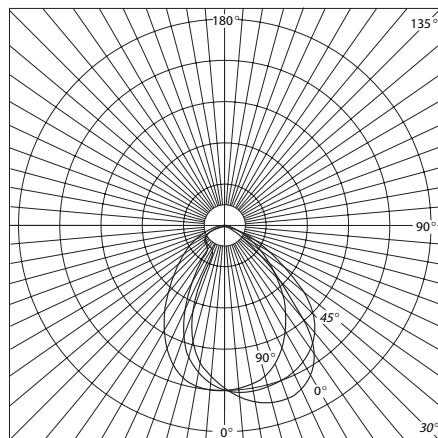


ORDERING INFORMATION

Sample Number: S71-1T8-8-D-1EB-SI-C-S58

Series	Number of Lamps (Not included)	Run Length Overall Nominal Run Length ____ ft.	Voltage ¹	Wiring	Fusing	Shielding
71: Perimeter	1: 1 Lamp 2: 2 Lamps	Individual or Run R: Continuous Run	1: 120V 2: 277V 3: 347V U: Universal	C: Standard Circuit D: Dimming	GLR GMF	S58: KSH-12 Acrylic Lens S62: Lateral Louver
	Lamp Type T8 T5 T5HO		Ballast EB: Electronic Ballast (Standard) DB: Dimming Ballast			

Notes: 1 Not all options available. Please consult your Cooper Lighting Representative for availability.



71-2T12-S62-8'
 (2) F40T12RS/WW
 3200 Lumens
 Efficiency 38.8%
 Test Report
 #4387.0

Coefficients of Utilization

Effective floor cavity reflectance									20%		
rc	80%				50%			30%			
rw	70	50	30	10	50	30	10	50	30	10	
RCR											
1	43	42	41	39	40	39	38	38	37	37	
2	40	38	36	34	36	34	33	35	33	32	
3	38	34	32	30	33	31	29	32	30	29	
4	35	31	28	26	30	28	26	29	27	26	
5	33	26	23	21	25	22	21	24	22	23	
6	30	26	23	21	25	22	21	24	22	20	
7	28	24	21	19	23	20	19	22	20	18	
8	26	22	19	17	21	18	17	21	18	17	
9	25	20	17	15	19	17	15	19	16	15	
10	23	18	15	14	18	15	14	17	15	13	

Zonal Lumen Summary

Zone	Lumens	%Lamp	%Fixture
0-30	2140	16.7	43.0
0-40	3137	24.5	63.0
0-60	4377	34.2	88.0
0-90	4971	38.8	100.0
0-120	0	0.0	100.0
0-180	4971	38.8	100.0

Total Luminaire Efficiency = 38.8%

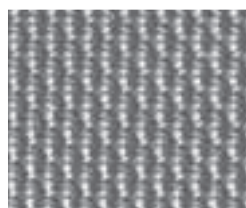
Candela

Angle	Along II	45°	Across ⊥
0	3078	3078	3078
5	3213	2151	3101
10	3321	3163	2980
15	3364	3138	2813
20	3368	3205	2612
25	3247	3093	2304
30	3097	2911	2008
35	2617	2489	1697
40	1767	2010	1395
45	1006	1397	1037
50	647	1052	859
55	579	694	727
60	421	487	578
65	316	399	453
70	212	247	301
75	144	166	196
80	92	101	98
85	46	52	23
90	0	0	0

RUNS AND PATTERNS



SHIELDING INFORMATION



S58 Acrylic Lens
 1/8" thick, clear acrylic prismatic lens.



S62 Lateral Louver
 3/16" high x 3/4" o.c., aluminum lateral louver white finish.