

DESCRIPTION

Neo-Ray's 75 Series features a slim 3" aperture perimeter lighting system that blends into the architecture while providing uniform illumination from the perimeter of the room. Staggered lamps virtually eliminate socket shadows and illuminated corners provide for continuous illuminated uninterrupted lines of light. Choose from many different types of shielding to put the finishing touch on the space.

Catalog #	Type
Project	
Comments	Date
Prepared by	

SPECIFICATION FEATURES

A ... Construction

Housing and lighting strips constructed of 20 gauge steel

B ... Shielding

Various options include: clear acrylic prismatic lens, white acrylic diffuser, bold baffle and parabolic blade louver. Bold baffles and parabolic blade louvers are also available with acrylic overlay.

C ... Electrical

120, 277, 347 or Universal Voltage electronic ballast. Dimming and Emergency Battery pack ballasts available. Fixtures and electrical components are UL and CUL listed.

D ... Finish

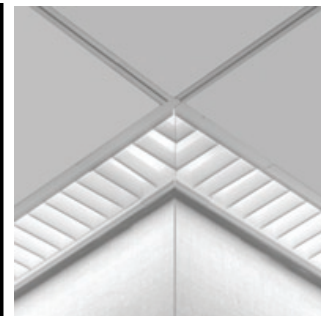
Durable, low gloss, white, baked powder coated acrylic finish.

E ... Staggered Lamps

T8 lamps have 3" stagger, T5 lamps have 6" stagger

F ... Mounting

Fixture ceiling trims are available to accomodate various ceiling grids and constructions.



ULTRA-NARROW 75

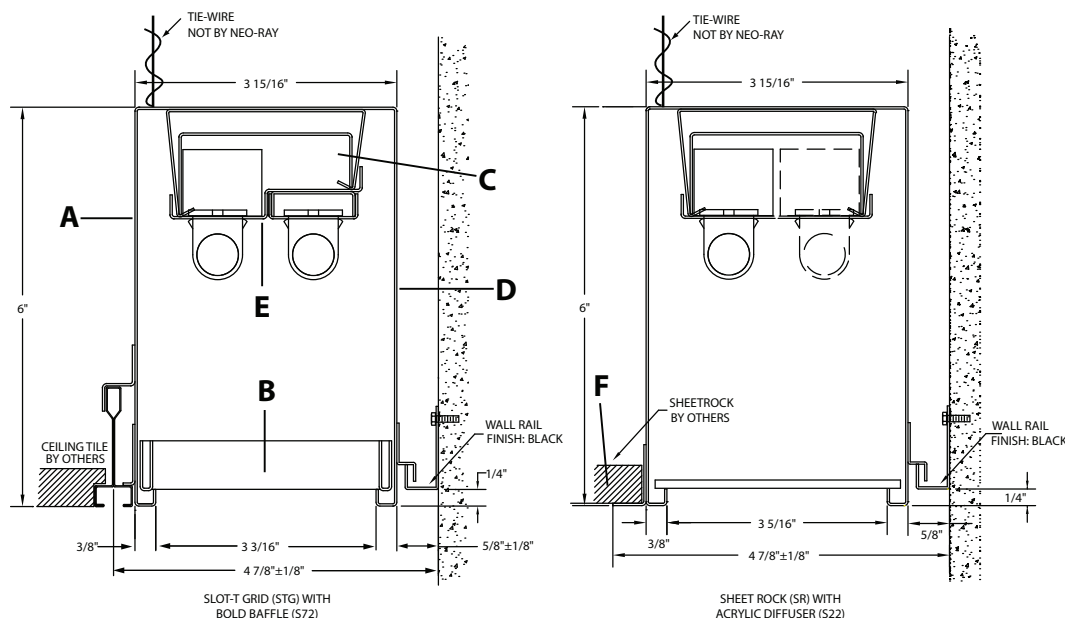
1 & 2T8
1 & 2T5
1 & 2T5HO

3" Perimeter

Light Distribution:

Indirect - 0.0%

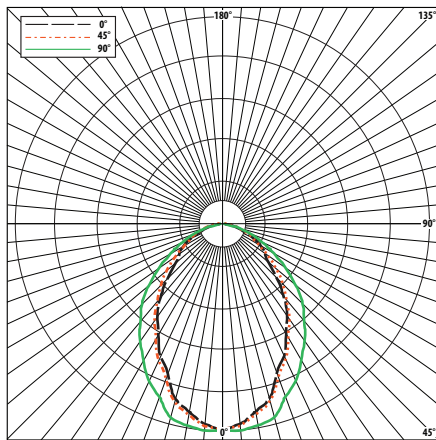
Direct - 100.0%



ORDERING INFORMATION

Sample Ordering Information: **75R/2T5/ETG21/UEB-SI-S72**

Series	Number of Lamps	Ceiling Type	Voltage	Ballast	Switching Options	Fusing	Shielding Options
75 - Perimeter	1 = 1 Lamp 2 = 2 Lamps	ETG = 1 1/2" High X 15/16" Flat Tee Grid FTG = 1 1/2" High X 9/16" Flat Tee Grid STG = 1 3/4" High X 9/16" Slot Tee Grid SR = Sheetrock (Flanged) FSR = Sheetrock (Flangeless) GTG = 1 11/16" High X 9/16" Flat Tee Grid HTG = 1 11/16" High X 15/16" Flat Tee Grid	1 = 120V 2 = 277V 3 = 347V U = Universal	EB = Electronic Ballast DB = Dimming Ballast	SI = Single Switching DU = Dual Switching	GLR = GLR GMF = GMF	S58 = Clear Acrylic Prismatic Lens w/Mullion S22 = White Acrylic Diffuser w/Mullion S72 = Bold Baffle S72P = Bold Baffle with Overlay S72PF = Bold Baffle with Perforated Blades S72PP = Bold Baffle with Perforated Blades and Overlay S79 = Semi-Specular Aluminum Parabolic Louvre S79P = Semi-Specular Aluminum Parabolic Louvre with Overlay
Mounting Type	Lamp Type	Run Length	Emergency				
R = Recessed	T8 = T8 T5 = T5 T5HO = T5HO	FT	EM = Emergency Pack				



75
(2) F28T5 / 835
2900 Lumens
Efficiency 30%
Test Report
#13012.0

Coefficients of Utilization

rc	Effective floor cavity reflectance				20%			
	80%				50%			
rw	70	50	30	10	50	30	10	50
RCR	30	10	30	10	30	10	30	10
0	36	36	36	36	33	33	33	32
1	33	32	31	31	30	29	29	29
2	31	29	27	26	27	26	25	26
3	29	26	24	22	25	23	22	24
4	27	24	21	20	22	21	19	22
5	25	21	19	17	20	18	17	20
6	23	19	17	15	18	17	15	18
7	21	18	15	14	17	15	13	16
8	20	16	14	12	15	13	12	15
9	18	14	12	11	14	12	10	14
10	17	13	11	09	13	11	09	12

Zonal Lumen Summary

Zone	Lumens	%Lamp	%Fixture
0-30	666	11.4	38.1
0-40	1003	17.3	57.9
0-60	1516	26.1	87.5
0-90	1733	29.9	100.0

Total Luminaire Efficiency = 30%

Candela

Angle	Along II	45°	Across	⊥
0	957	957	957	
5	930	942	960	
10	879	897	945	
15	834	853	925	
20	726	749	849	
25	664	685	798	
30	571	590	716	
35	504	523	652	
40	417	437	573	
45	321	369	506	
50	250	289	411	
55	221	213	329	
60	180	162	247	
65	131	125	169	
70	87	88	101	
75	60	61	65	
80	35	34	36	
85	15	16	16	
90	0	0	0	

RUNS AND PATTERNS

18' Continuous Run				
8' Steel Housing		6' Steel Housing		4' Aluminum Housing
(1) T8		(2) T8		(2) T5
Housings	(1) 8' STEEL HOUSING (1) 6' STEEL HOUSING (1) 4' ALUMINUM HOUSING ²	(1) 8' STEEL HOUSING (1) 6' STEEL HOUSING (1) 4' ALUMINUM HOUSING ²	(1) 8' STEEL HOUSING (1) 6' STEEL HOUSING (1) 4' ALUMINUM HOUSING ²	(1) 8' STEEL HOUSING (1) 6' STEEL HOUSING (1) 4' ALUMINUM HOUSING ²
Lighting Strips	ONE LIGHT LIGHTING STRIPS (1) 8FT STAGGERED (1) 4FT STAGGERED (1) 3FT STAGGERED (1) 4FT ONE LIGHT ADJUSTABLE STRIP* ¹	TWO LIGHT LIGHTING STRIPS (1) 8FT STAGGERED* (1) 4FT STAGGERED* (1) 4FT TWO LIGHT ADJUSTABLE STRIP* ¹	ONE LIGHT ADJUSTABLE STRIPS (1) 8FT STAGGERED (1) 4FT STAGGERED (1) 3FT STAGGERED (1) 4FT ONE LIGHT ADJUSTABLE STRIP	TWO LIGHT ADJUSTABLE STRIPS (1) 8FT STAGGERED (1) 4FT STAGGERED (1) 4FT TWO LIGHT ADJUSTABLE STRIP

* - All lighting strip lengths are nominal

1 - Adjustable strips are adjustable up to 20"

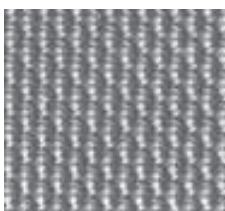
2 - 4' aluminum housing to be cut by hand saw in the field to fit opening

Lighting strips installed into the fixture housing on the job site.

NOTES

1. Install lighting strips from left to right, beginning with larger strips to smaller. Adjustable strip should be installed on right end of fixture run
2. For two lamp strips - if the telescopic strip has a stagger of over 12", light output will diminish at the end of run
3. For one lamp strip - if telescopic has a stagger of less than 12", fixture is brighter where adjustable strip installed.

SHIELDING INFORMATION



S58 Acrylic Lens
1/8" thick, clear acrylic prismatic lens.



S72 Bold Baffle
1" high x 1.2" o.c., 3/16" thick aluminum baffle, continuous and unbroken, no visible joints.



S79 Parabolic Louvre
1-1/4" high blades, 2.4" o.c., semi-specular low-brightness Pearlescent Aluminum Louvre. Continuous and unbroken, no visible joints.



22 Acrylic Lens
Soft white acrylic lens with Mullion



90° and 135°
Illuminated inside and outside corners available