

DESCRIPTION

Series 77 means architectural compatibility. A logical and visual relationship exists between the perimeter wall through system and the center through system when mounted in the same space. The Parabolic Baffle and the Bold Baffle lamp shielding options are varied in scale. The lighting is continuous and unbroken, utilizing one or two lamps staggered. Runs are field adjusted. There are no blank filler sections, visible joints, mullions or hardware. The trims are heavy extruded aluminum, rigid, straight and true with a 3/8" regress soft lit edge.

NOTE: Fixture must be installed before ceiling.

SPECIFICATION FEATURES

A ... Construction

20-gauge steel housing.

B ... Shielding

Parabolic or bold baffles.

C ... Electrical

120, 277, 347 or Universal Voltage electronic ballast. Fixtures and electrical components certified to UL and CUL standards. Note: Please consult factory, Fifthlight may not be available in some configured options.

D ... Finish

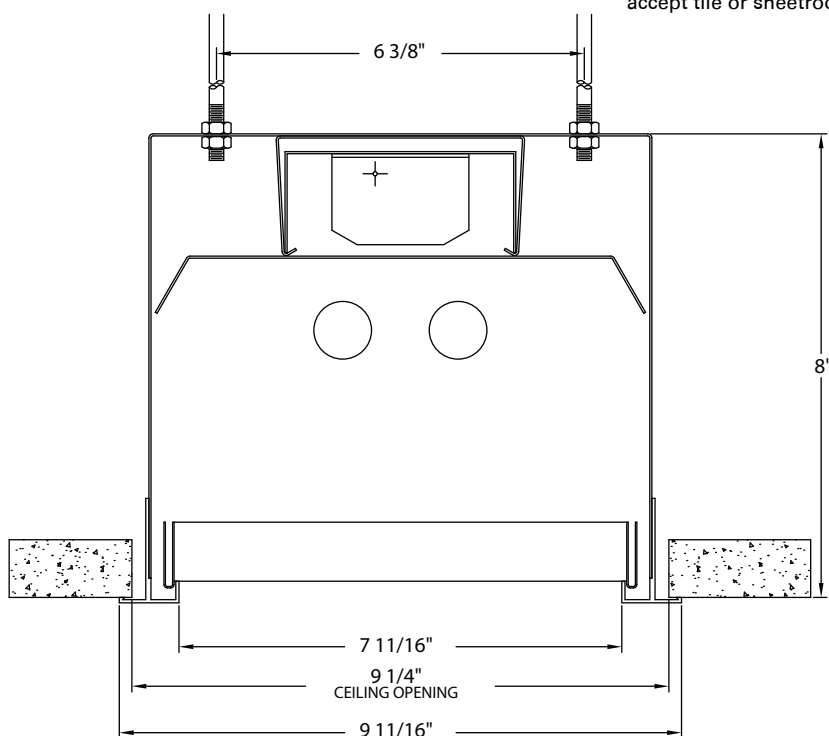
Durable, low gloss, white, powder coated acrylic finish.

Staggered Lamps

T8=3", T5=6"

Mounting

Recessed. Fixture flange will accept tile or sheetrock.



77

1 & 2T8

1 & 2T5

1 & 2T5HO

Recessed

Direct

Light Distribution

Indirect - 0.0%

Direct - 100.0%



ORDERING INFORMATION

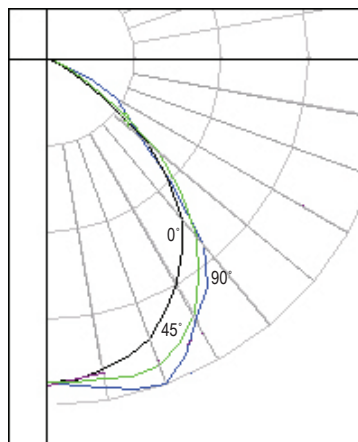
Series	Number of Lamps (Not included)	Lamp Type	Voltage ¹	Ballast	Shielding
77	1= 1 Lamp 2= 2 Lamps	T8 T5 T5HO	1= 120V 2= 277V 3= 347V U= Universal	EB= Electronic Ballast (Standard) DB= Dimming Ballast	S58= KSH-12 Acrylic Lens S72= White Bold Baffle S79= Semi-Specular Aluminum Parabolic Baffle
Mounting	Run Length	Emergency	Fusing		
R= Recessed	Overall Nominal Run Length ___ ft.	EM= Emergency Pack (Consult Factory)	GLR GMF		

Notes: 1 Not all options available. Please consult your Cooper Lighting Representative for availability.

PHOTOMETRICS

Series 77

77-2T8-4D-S10



Zonal Lumen Summary

Zone	Lumens	%Lamp	%Fixt
0-30	1220.95	20.70	38.70
0-40	1972.95	33.40	62.50
0-60	2984.2	50.60	94.50
0-90	3157.08	53.50	100.00
0-180	3157.08	53.50	100.00

Total Luminaire Efficiency = 53.50%

Total Rated Lamp Lumens	5900 (2 lamps)
Luminaire Efficacy Rating (LER)	37
Total Luminaire Watts	85
Ballast Factor	1.00
Total Luminaire Efficiency	53.5 %
Report#:	4475.2

Candela

Angle	0	45	90
0	1487	1487	1487
5	1487	1498	1510
10	1454	1500	1542
15	1419	1513	1578
25	1282	1444	1508
35	1083	1218	1281
45	778	861	790
55	311	407	445
65	54	103	237
75	14	24	34
85	6	17	20
90	0	0	0

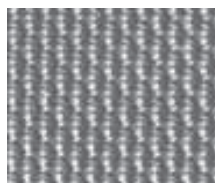
RUNS AND PATTERNS

STANDARD ILLUMINATED SECTIONS MITERED CORNERS ARE INSTALLED CONTINUOUS AND UNBROKEN, AND ARE FIELD CUT TO SUIT.

UTILIZE 8', 6' AND 4' STEEL LUMINAIRES WITH 4' ALUMINUM END FOR FIELD CUTTING.



SHIELDING INFORMATION



S58 - KSH-12 Acrylic Lens
1/8" thick, clear acrylic
prismatic lens with mullion.



S72 Bold Baffle
1" high x 1.2" o.c., 3/16"
thick aluminum baffle,
continuous and unbroken,
no visible joints.



S79 Parabolic Baffle
1-1/4" high blades. 2.4"
o.c., semi-specular
lo-brightness Pearlescent
Aluminum baffle.
Continuous and unbroken,
no visible joints.



90° Mitered Baffle
1-1/4" high x 2.4" on
center. S79 Parabolic
Baffle is shown. Also
typical for S72 Bold Baffle.