

DESCRIPTION

23XR wall wash completes the Straight & Narrow family. Its precise optical reflector design provides wall illumination up to 10' in height with smooth gradation from top to bottom of the wall. 23XR application is perfect for classrooms, conference rooms, corridor walls, arcades and galleries. 23XR features excellent photometrics and high efficiency while offering smooth wall wash free of striations and shadows. Runs are provided to the nearest foot and the light source is hidden from most viewing angles.

Catalog #		Type
Project		
Comments		Date
Prepared by		

SPECIFICATION FEATURES

Construction

Housing is one-piece, die-formed, cold rolled steel. Standard 2', 3', 4' and 5' fixture lengths.

Electrical

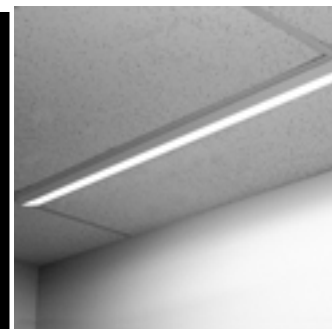
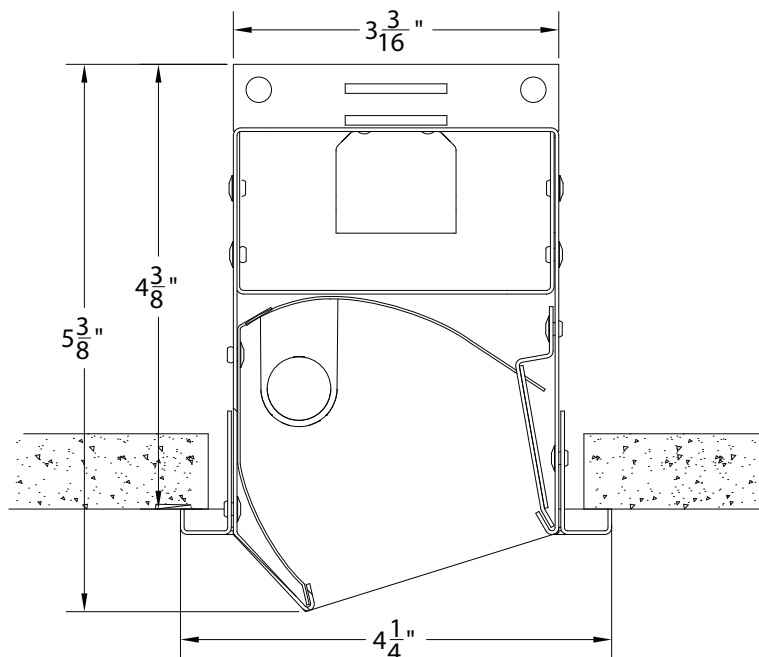
120, 277, 347 or Universal Voltage electronic ballast. Fixtures and electrical components certified to UL and CUL standards. Note: Please consult factory, Fifthlight may not be available in some configured options.

Finish

Durable, low gloss, white, powder coat acrylic. Optional custom finish.

Mounting

Recessed.



WALL WASH 23XR Gen II

1T5
1T5HO

Wall Wash
Direct-Indirect

Light Distribution:
Indirect = 1%
Direct = 99%



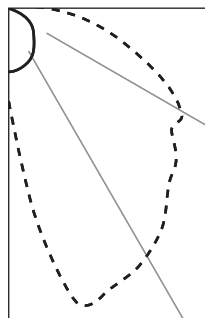
ORDERING INFORMATION

Sample Number: S23XR-1T5-ETG-4-U-EB-S92HT

Series	Mounting	Number of Lamps (not included)	Lamp Type	Ceiling Type	Length	Section	Voltage	Ballast	Switching	Fusing
S23X= Series 23 Wall Wash	R= Recessed	1 = 1 lamp	T5 T5HO	ETG = 15/16" (exposed T-grid) FTG= 9/16" (exposed T-grid) STG = Slot T-grid SR = Sheet Rock (flanged) FSR= Sheet Rock (trimless)	2= 2' 3= 3' 4= 4' 6= 6' 8= 8'	D= Individual I= Intermediate B= Beginning of Run E= End of Run	120 = 120V 277= 277V UNV = Universal (120v-277v)	EB= Electronic Ballast DB= Dimming Ballast	SI=Single Switching	GLR GMF

Notes:

- Not all options available. Please consult your local Cooper Lighting Representative for availability.
- Specification and Dimensions subject to change without notice.



23XR
1T5HO lamp
Efficiency 61.7%
Test#168P236

0 - - - -
90 - - - -

Zonal Lumen Summary

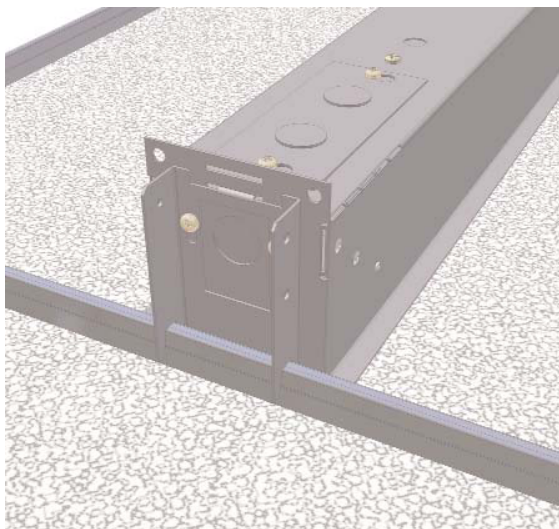
Zone	Lumens	%Lamp	%Fixture
0-30	650	13.0	21.1
0-40	1146	22.9	37.1
0-60	2174	43.5	70.4
0-90	3068	61.4	99.4
0-180	3086	61.7	100.0

Total Luminaire Efficiency = 61.7%

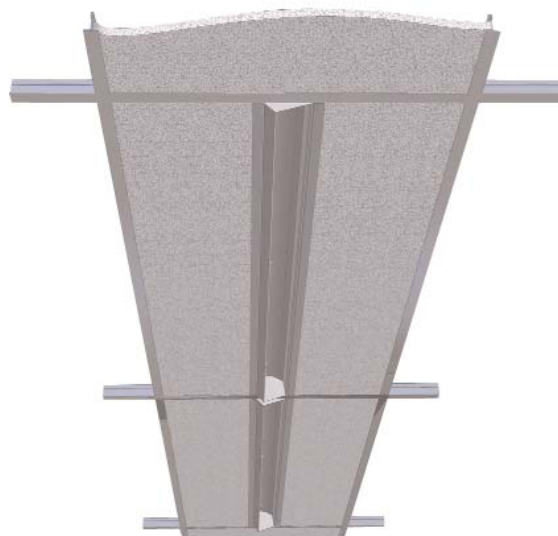
Candela

Angle	Along	II	45°	Across	⊥
0	417	417	417		
5	883	734	417		
15	1999	1698	403		
25	1912	1873	374		
35	1768	1692	330		
45	1530	1475	272		
55	1344	1189	204		
65	1143	968	132		
75	746	661	63		
85	419	310	9		
90	222	144	2		
95	46	6	2		

MOUNTING INFORMATION



Patent pending adjustable ceiling mounting system. Adjust to various ceiling grid types and enables end installation precise fit for integrated ceiling appearance. Access plate and pre-wired assembly allows for easy wiring.

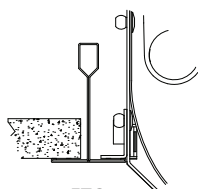


Recommended distance from fixture longitudinal axis and wall is 1' to 3'. Optimum performance distance is 2'. Fixture housing lengths are 3', 4' and 5' mounted individually in grid ceilings and in sheet rock can be mounted in continuous rows. Fixtures can be butted up against each other, end-to-end for continuous row mounting.

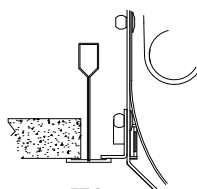


Ideal for vertical surfaces. The shape of the reflector was specially designed to produce uniform lighting on walls. The fitting's size is reduced. It uses high performance fluorescent lamps with low energy consumption. It is also quite easy to install.

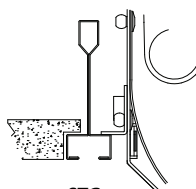
MOUNTING OPTIONS



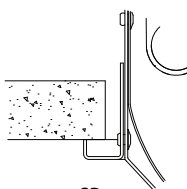
ETG
15/16" TEE GRID



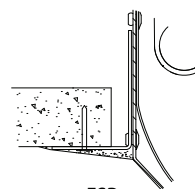
FTG
9/16" TEE GRID



STG
9/16" TEE GRID
(SLOTTED)



SR
SHEET ROCK



FSR
"FLANGELESS"
SHEET ROCK