

DESCRIPTION

Parabolic Baffle and/or Bold Baffle Series 76 are staggered lamp perimeter lighting systems providing a shadowless wall wash configuration of uninterrupted light. The lighting is continuous and unbroken, utilizing one or two lamp staggered. Runs and patterns are field adjusted. There are no blank filler sections, visible joints, mullions, or hardware. The floating wall angle and ceiling trim with heavy extruded aluminum, rigid, straight and true with a 3/8" regress soft lit edge.

Features: PentaFlex (TM) reflector system, continuous and seamless up to 40'.

SPECIFICATION FEATURES

A ... Construction

20-gauge steel housing sections in 3', 4', 6' and 8' lengths.

B ... Shielding

White bold baffle. Semi-specular aluminum parabolic baffle.

C ... Electrical

120, 277, 347 or Universal Voltage electronic ballast. Fixtures and electrical components certified to UL and CUL standards. Note: Please consult factory, Fifthlight may not be available in some configured options.

Mounting

Recessed.

D ... Finish

Durable, low gloss, white, powder coated acrylic finish.

E ... Staggered Lamps

T8=3", T5=6"

F ... Reflector

Pentaflex(TM) continuous white reflector is seamless up to 40'.

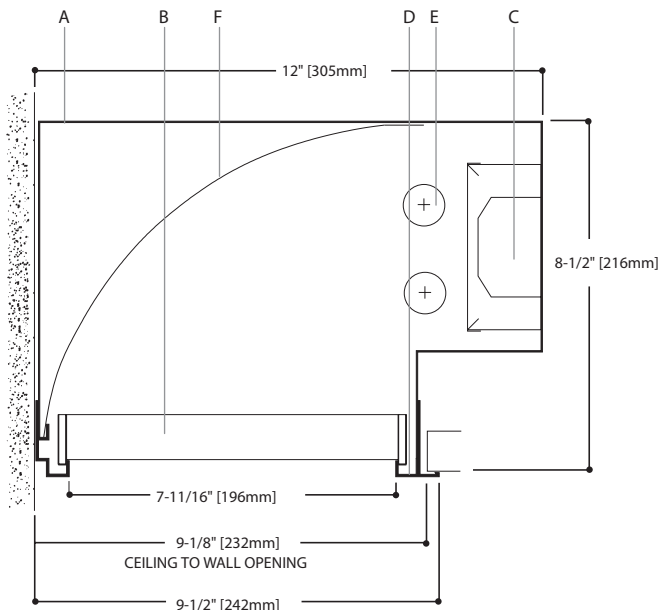


Series 76PF with PentaFlex

1 & 2T8
1 & 2T5
1 & 2T5HO

Perimeter
Recessed Direct
Wall Wash

Light Distribution:
Indirect - 0.0%
Direct - 100.0%

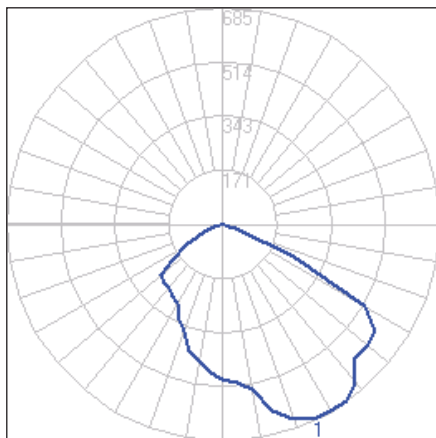


ORDERING INFORMATION

Sample Number: S76PF-2T8-56-R-2EB-SI-S72

Series 76PF : Perimeter with Pentaflex	Number of Lamps (Not included) 1 : 1 Lamp 2 : 2 Lamps Lamp Type T8 T5 T5HO		Run Length Overall Nominal Run Length ____ ft. Individual or Run D : Individual R : Continuous Run		Voltage ¹ 1 : 120V 2 : 277V 3 : 347V U : Universal Ballast EB : Electronic Ballast (Standard) DB : Dimming Ballast		Wiring C : Standard Circuit D : Dimming	Fusing GLR GMF		Shielding S58 : KSH-12 Acrylic Lens S72 : White Bold Baffle S79 : Semi-Specular Aluminum Parabolic Baffle		

Notes: 1 Not all options available. Please consult your Cooper Lighting Representative for availability.



76PF
(1) F32T8/835
2950 Lumens
Efficiency 42.60%
Test Report
#14779.0

Coefficients of Utilization

Effective floor cavity reflectance								20%		
RC	80				70			50		
RW	70	50	30	10	50	30	10	50	30	10
0	51	51	51	51	47	47	47	45	45	45
1	47	45	44	43	43	42	41	41	40	39
2	43	40	38	36	38	36	34	37	35	34
3	40	36	33	30	34	32	30	33	31	29
4	37	32	29	26	30	28	25	29	27	25
5	34	29	25	23	33	28	25	27	24	22
6	31	26	22	20	30	26	22	24	21	19
7	29	24	20	18	28	23	20	22	19	17
8	27	21	18	16	26	21	18	20	17	15
9	25	20	16	14	25	19	16	19	16	14
10	24	18	15	13	23	18	15	17	15	13

Zonal Lumen Summary

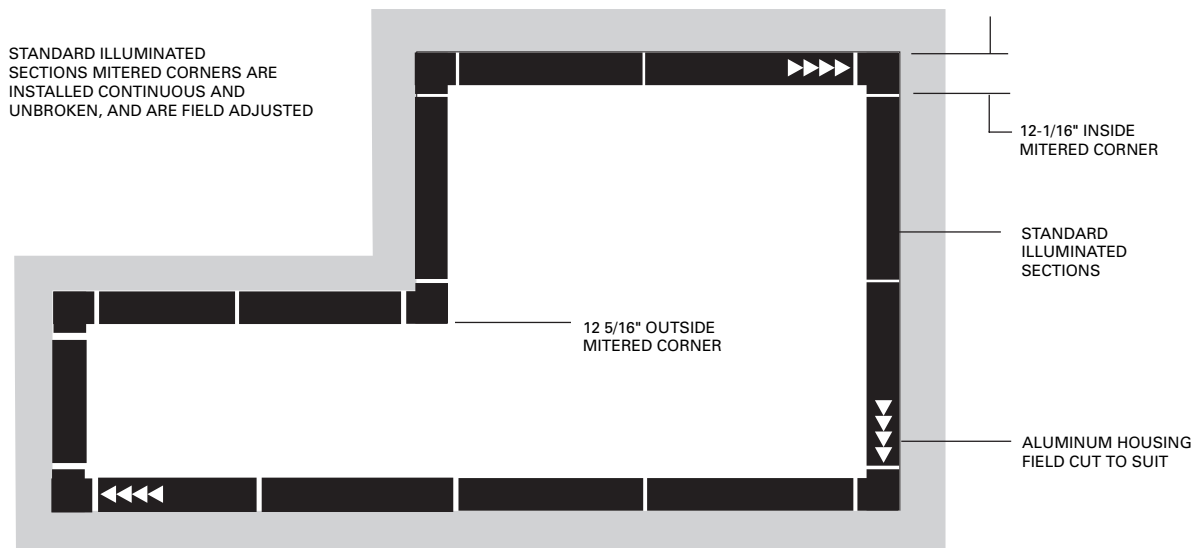
Zone	Lumens	%Lamp	%Fixt
0-30	394.46	13.40	31.40
0-40	655.45	22.20	52.20
0-60	1137.62	38.60	90.60
0-90	1255.88	42.60	100.00
90-180	0.00	0.00	0.00
0-180	1255.88	42.60	100.00

Total Luminaire Efficiency = 42.60%

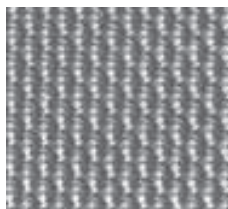
Candela

Angle	Along	II	45°	Across
0	492	492	492	492
5	502	499	490	486
10	529	502	486	482
15	610	535	482	415
20	658	547	421	381
25	683	579	363	311
30	680	588	248	201
35	685	584	133	61
40	653	545	26	16
45	595	485	10	5
50	597	448	3	1
55	588	368	0	0
60	521	251		
65	246	125		
70	43	25		
75	21	16		
80	7	7		
85	3	3		
90	0	0		

RUNS AND PATTERNS



SHIELDING INFORMATION



S58 Acrylic Lens
1/8" thick, clear acrylic prismatic lens.



S72 Bold Baffle
1" high x 1.2" o.c., 3/16" thick aluminum baffle, continuous and unbroken, no visible joints.



S79 Parabolic Baffle
1-1/4" high blades. 2.4" o.c., semi-specular lo-brightness Pearlescent Aluminum baffle. Continuous and unbroken, no visible joints.