

## DESCRIPTION

79OS is an enhanced addition to the perimeter wall wash family. This open slot wall washer in a simple format, just a wall disappearing into an open slot trimmed out with a room side extrusion, which totally hides the lamps from any viewing angle. Smooth graduated wall illumination. Individual fixtures are provided with wall rail and ceiling extrusion cut to size, and length is not adjustable.

Catalog #	Type
Project	
Comments	Date
Prepared by	

## SPECIFICATION FEATURES

### A ... Construction

Steel housing sections in 3', 4', 6' and 8' lengths.

### B ... Electrical

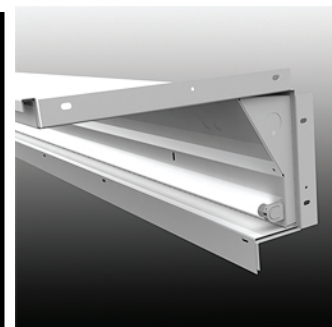
120, 277, 347, or Universal Voltage electronic ballast. Fixtures and electrical components certified to UL and CUL standards. Note: Please consult factory, Fifthlight may not be available in some configured options.

### C ... Finish

Durable, low gloss, white, powder coated finish.

### Mounting

Recessed.

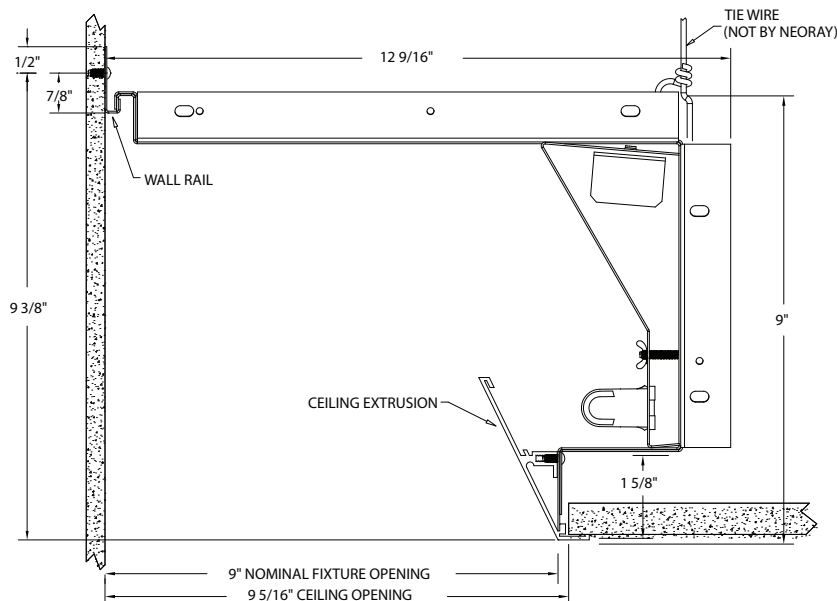


## 79-OS Individual

1T8  
1T5  
T5HO

**Perimeter**  
Direct Wall Wash

**Light Distribution:**  
Indirect - 0.0%  
Direct - 100.0%



Note: INDIVIDUAL FIXTURES ARE NOT ADJUSTABLE, AND CANNOT BE COMBINED INTO RUNS.  
If adjustability is required, use 79OS continuous fixture.



## ORDERING INFORMATION

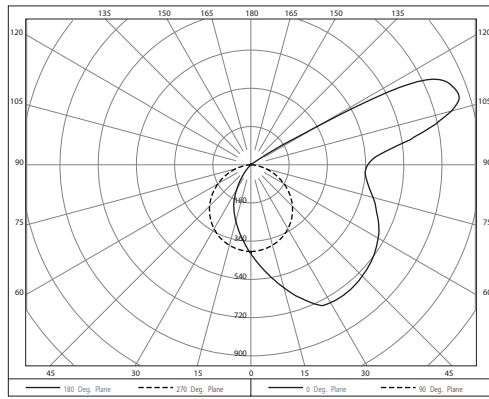
Sample Number: 79OS-1T5-D-UEB-SI

Series	Number of Lamps (Not included)	Lamp Type	Individual or Run	Ballast	Fusing
79OS: 79OS	1: 1 Lamp	T8: T8 T5: T5 T5HO: T5HO	D: Individual <sup>1</sup>  Voltage <sup>2</sup> 1: 120V 2: 277V 3: 347V U: Universal	EB: Electronic Ballast (Standard) DB: Dimming Ballast  Wiring C: Standard Circuit D: Dimming	GLR: GLR GMF: GMF  End Plate <sup>1</sup> EP: Flanged End Plate

- Notes: 1 For individual fixtures flanged end plates provided by default.  
2 Not all options available. Please consult your Cooper Lighting Representative for availability.

**79OS**

79OS-1T5HO-4I-2EB-SI

**Zonal Lumen Summary**

Zone	Lumens	%Lamp	%Fixt
0-30	345.86	7.90	14.70
0-40	586.04	13.30	24.90
0-60	1111.32	25.30	47.20
0-90	1749.96	39.80	74.40
0-180	2352.63	53.50	100.00

Total Luminaire Efficiency = 53.50%  
 Total Rated Lamp Lumens 4400  
 Total Luminaire Watts 59  
 Ballast Factor 1.00  
 CIE Type Semi-Direct  
 Luminous Length (0-180) 0.74 ft  
 Luminous Width (90-270) 3.83 ft  
 Luminous Height 0.67 ft  
 Report#: 12281

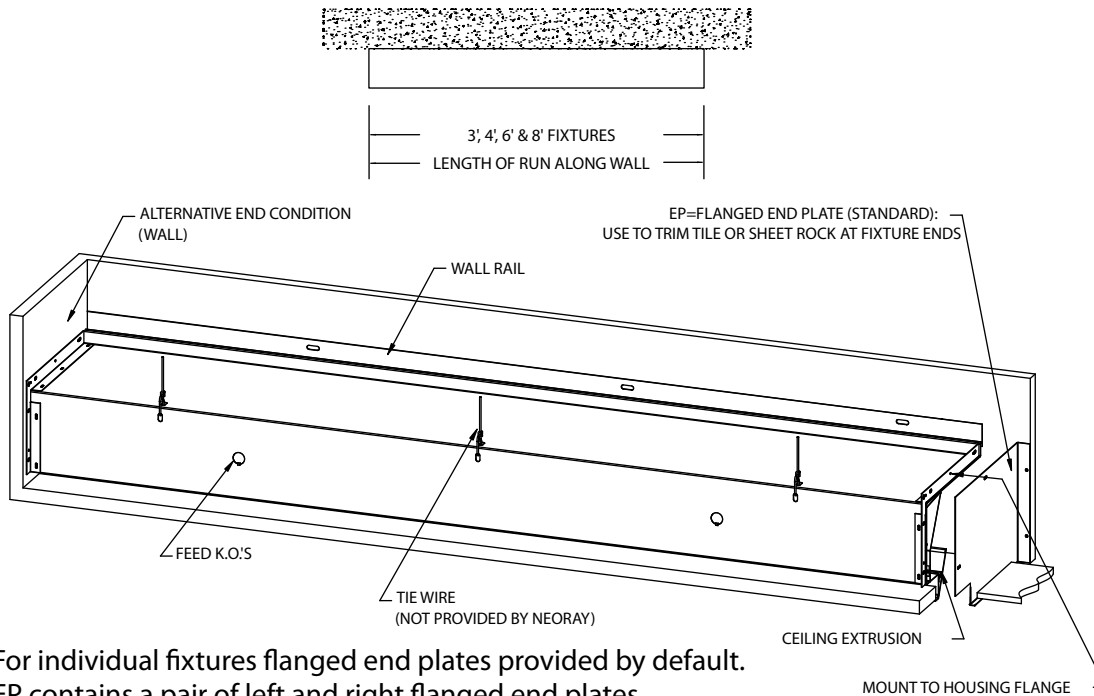
**Candela**

Angle	0	45	90
0	413	413	413
5	475	448	406
10	537	484	401
15	600	519	393
25	726	589	366
35	753	642	327
45	742	620	277
55	714	567	214
65	664	510	145
75	596	427	74
80	562	383	41
90	550	344	0

**Mounting Information**

NOTE: T5 Fixtures smaller than nominal size to minimize shadow, see table below for actual sizes.

NOMINAL	3'	4'	6'	8'
T5 ACTUAL	34 1/4"	46 1/8"	68 1/2"	92 1/8"
T8 ACTUAL	36"	48"	72"	96"

**TYPICAL INDIVIDUAL FIXTURE APPLICATION**

NOTE: For individual fixtures flanged end plates provided by default.  
EP contains a pair of left and right flanged end plates.