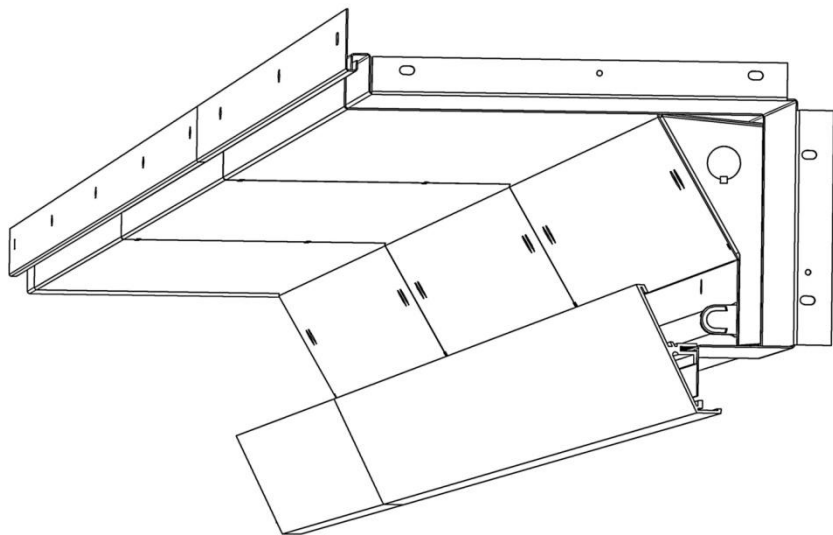


SERIES S790S INSTALLATION INSTRUCTIONS



PLEASE MAKE SURE YOU HAVE THE FOLLOWING BEFORE INSTALLATION

- Free access to the space where the fixture is to be mounted.
(NOTE: FIXTURE MUST BE INSTALLED BEFORE CEILING.)
- Extruded ceiling rail & wall rail
- Box of hardware
- Tie wires (not provided by Neo-Ray)
- Screwdriver & screws suitable for securing wall rail.
(Dependent on wall material, not provided by Neo-Ray)

OVERVIEW

STEP 1*: Cut & mount wall rail(s).

STEP 2*: Determine fixture position. Mount corner & Beginning Of Run (BOR) fixture. Attach tie wires.

STEP 3: WALL: Pull Beginning Of Run extension flush with wall & attach.

CEILING (-EP OPTION): Attach end plate to extension & wall.

STEP 4: Attach each Intermediate (INT) fixture to the run.

STEP 5: Pull End Of Run extension to desired length as needed for wall/ceiling & attach. (See step 3.)

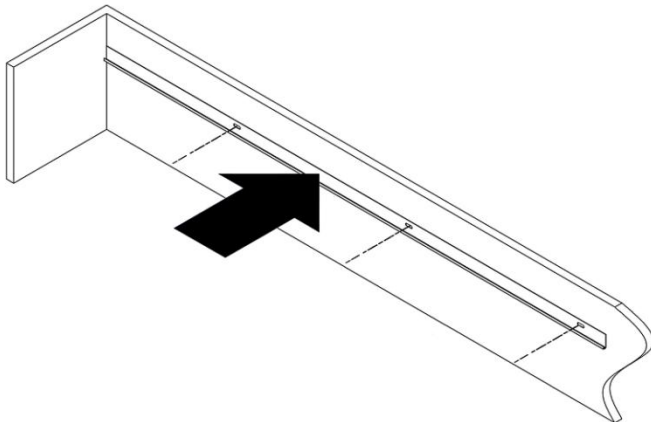
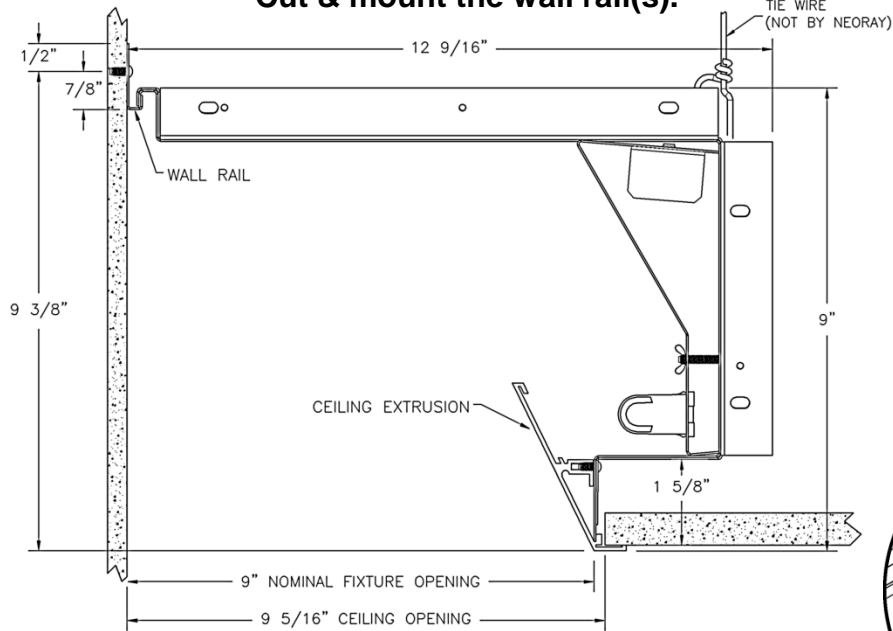
STEP 6*: Mount ceiling extrusion(s) to fixture(s) & cut.

STEP 7*: Trim fixture(s) with ceiling.

* Note: Individual (IND) fixtures are not used in runs, and are not adjustable. If you have an IND fixture, only these steps are required.

STEP 1

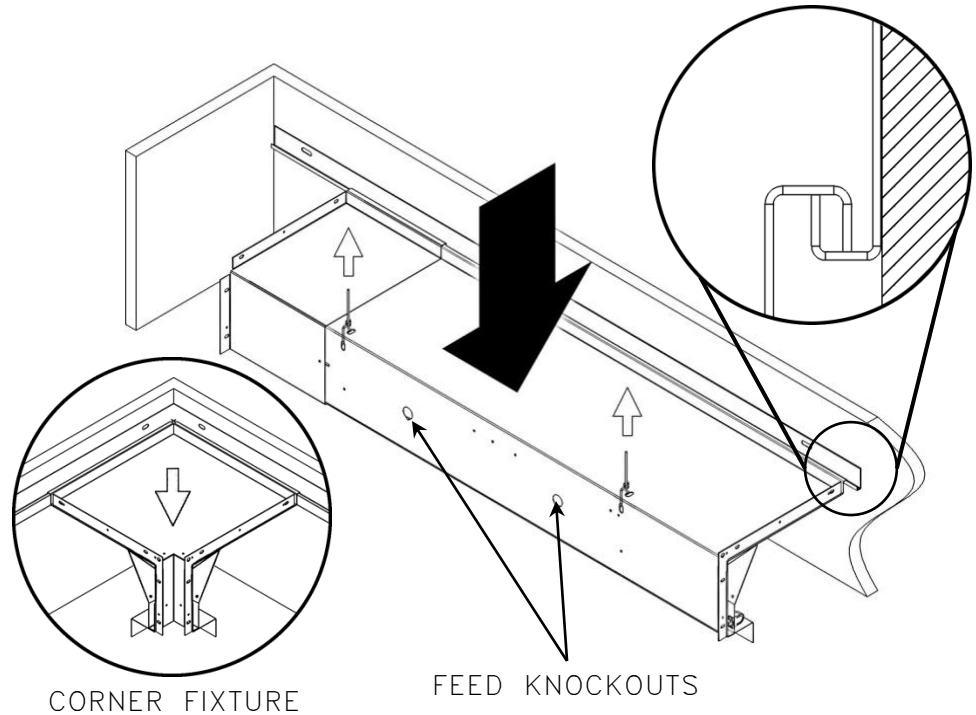
Cut & mount the wall rail(s).



Cut the wall rail(s) to the desired length. Using screws, mount each to the wall as shown, making sure each is flat and level for best appearance.

STEP 2

Determine fixture position. Mount corner & Beginning Of Run (BOR) fixture. Attach tie wires.



Determine proper placement of fixtures using submittal drawing. (Lighting should be centered along wall.) Check that the wall rail channel is clear of debris. If there is a corner fixture to the left of the BOR, mount it first. Attach & configure all necessary wiring, including feeds, as needed. Hang the fixture over the wall rail channel and attach supporting tie wires to the holes in the rear of the fixture, as shown.

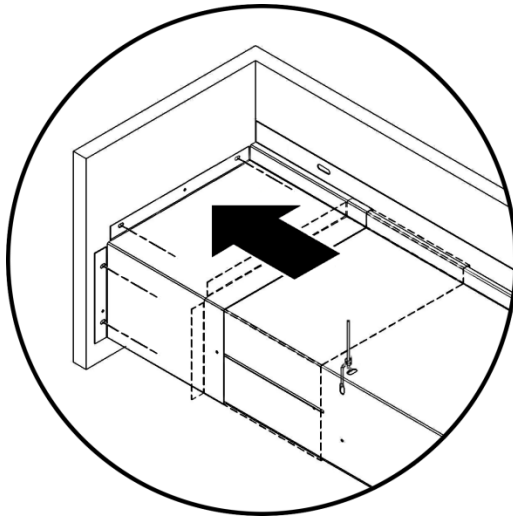
neoray

100 Andrews Rd., Hicksville, NY 11801

TEL: 516-470-1000

STEP 3

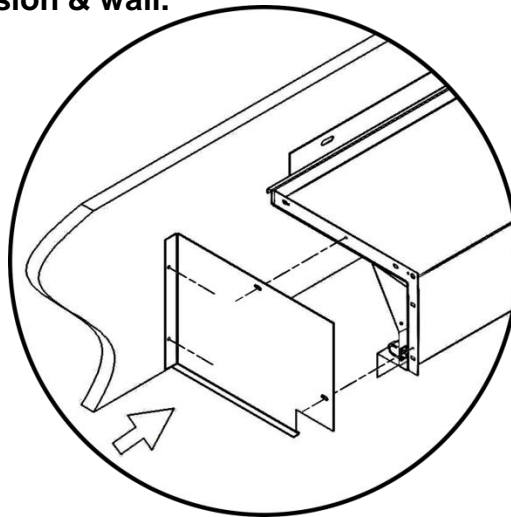
WALL: Pull Beginning Of Run extension flush with wall & attach.



If your BOR attaches to a wall, pull the extension out until it sits flush with the wall, and affix it using screws.

CEILING (-EP OPTION): Attach end plate to extension & wall.

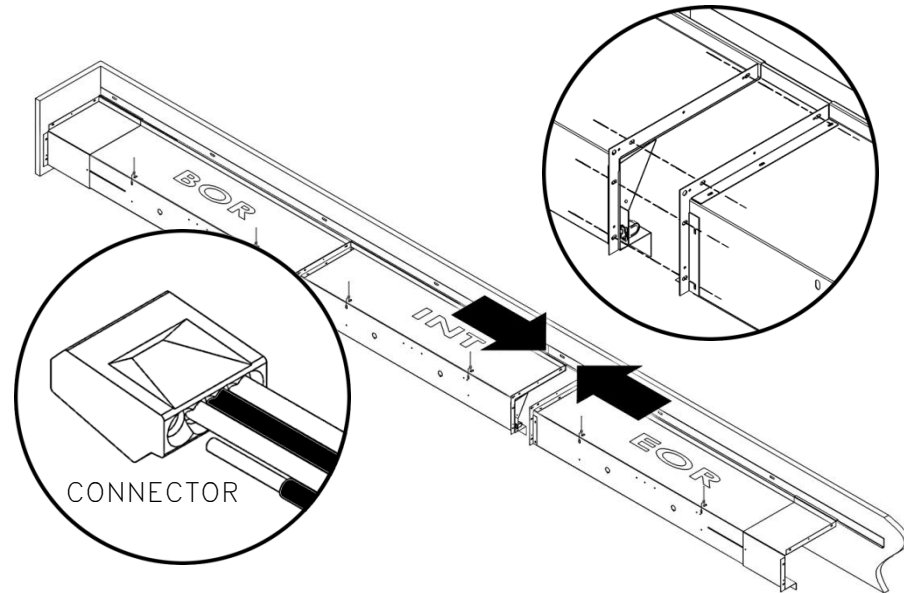
If you ordered the -EP option and your BOR does not attach to a wall, pull the extension to the desired length, then attach an end plate to the extension's flange. Affix the end plate to the wall using screws.



(NOTE: THE EXTENSION DOES NOT REQUIRE TIGHTENING.)

STEP 4

Attach each intermediate (INT) fixture to the run.



Attach each intermediate (INT) fixture to the run, using screws & nuts to pull flanges together. Connect appropriate wiring where desired using supplied electrical connectors.

STEP 5

Pull End Of Run extension to desired length as needed for ceiling/wall & attach. (See step 3.)

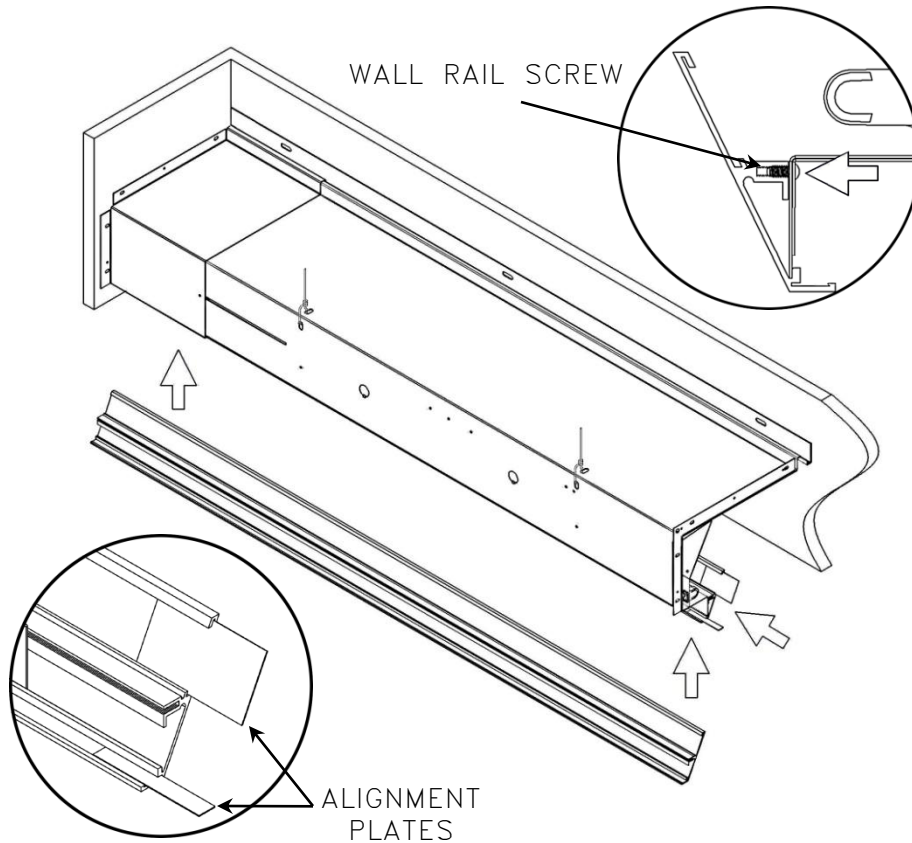
neoray

100 Andrews Rd., Hicksville, NY 11801

TEL: 516-470-1000

STEP 6

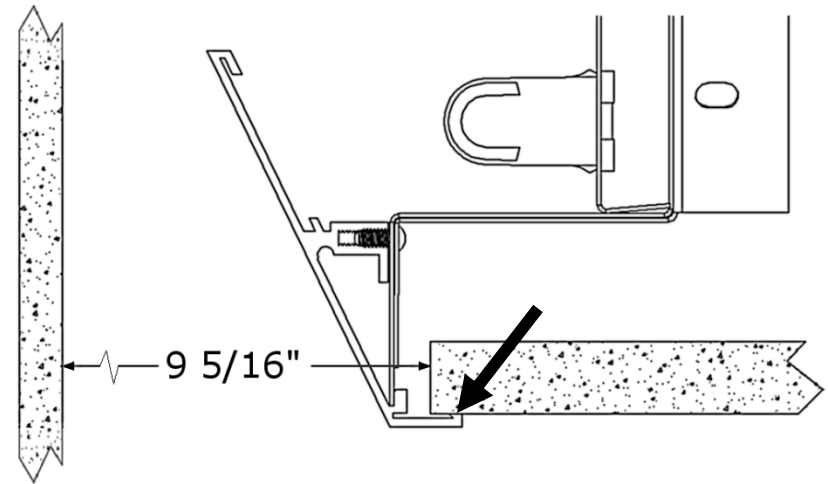
Mount ceiling extrusion(s) to fixture(s) & cut.



Extrusions are supplied in twelve-foot lengths. Attach the ceiling extrusions to each fixture as shown. Insert alignment plates between segments, making sure each is flush & level. Cut final extrusion to run length.

STEP 7

Trim fixture(s) with ceiling.



Cut ceiling grid or sheetrock to interface with fixture as shown. Level with indicated face of ceiling rail. Check to make sure all parts are properly seated & flush.

neoray

100 Andrews Rd., Hicksville, NY 11801
TEL: 516-470-1000