

DESCRIPTION

A seamless continuous line of light and walls softly glowing...that is what every lighting consultant and architect visualizes when designing perimeter wall lighting for their spaces.

Features

- PentaFlex (TM) reflector system, continuous and seamless up to 40'.
- Smooth softly graduated wall illumination without a hint of lamp sockets shadows.
- Totally shielded lamps from all viewing angles.
- Installation friendly.

Catalog #	Type
Project	
Comments	
Prepared by	

SPECIFICATION FEATURES

A ... Construction

20-gauge steel housing.

B ... Shielding

PentaFlex™, continuous white reflector is seamless up to 40'.

C ... Electrical

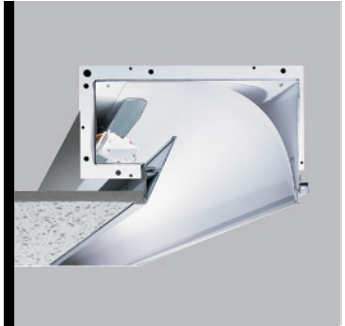
120, 277, 347 or Universal Voltage electronic ballast. Fixtures and electrical components certified to UL and CUL standards.

D ... Finish

Durable, low gloss, white, powder coated acrylic finish.

Mounting

Recessed.

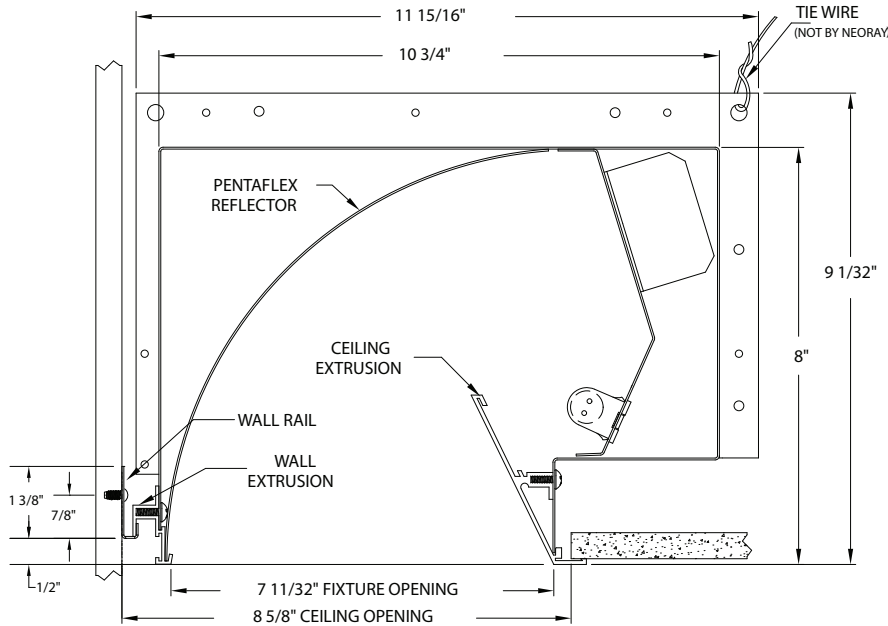


PentaFlex™ 79-PF

1 & 2T8
1 & 2T5
1 & 2T5HO

Perimeter
Direct Wall Wash

Light Distribution:
Indirect - 0.0%
Direct - 100.0%



Note: Actual wall length must be provided; Do Not round up
Refer to run length chart on page 3

Ordering Information

Sample Number: 79PF-2T5-300-UEB-SI

79PF								
Series 79PF = 79PF	Number of Lamps 1=1 Lamp 2=2 Lamps	Lamp Type T8=T8 T5=T5 T5HO=T5HO	Length of run along the wall ² ___ Ft ___ In	Voltage ¹ 1=120V 2=277V 3=347V U=Universal	Ballast EB=Electronic Ballast DB=Dimming Ballast	Switching Options SI= Single Switching DU= Dual Switching	Fusing GLR= GLR GMF= GMF	Flanged End Plate Option ³ EP = End Plate
						Emergency EM= Emergency Pack		

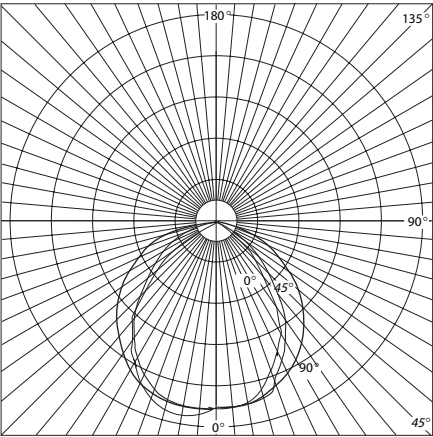
Notes:

¹ Not all options available. Please consult your Cooper Lighting Representative for availability.

² Do not round up

³ A pair of End Closures per run is provided by default. No flanged end plates are provided. If flanged end plate is required, order EP. See graphics on page 2.

NOTE: Not available as an individual fixture.



79PF
(1) F32T8/735/RS
2850 Lumens
Efficiency 34.8%
Test Report
#9826.0

Coefficients of Utilization

rc	Effective floor cavity reflectance											
	80%				50%				20%			
	70	50	30	10	50	30	10		50	30	10	
rvw	70	50	30	10	50	30	10		50	30	10	
RCR												
1	38	37	35	34	34	33	33		33	32	32	
2	35	32	30	28	31	29	27		29	28	27	
3	32	29	26	24	27	25	23		26	25	23	
4	30	26	23	21	24	22	20		24	22	20	
5	27	23	20	18	22	20	18		21	19	18	
6	25	21	18	16	20	18	16		19	17	16	
7	24	19	16	14	18	16	14		18	16	14	
8	22	17	15	13	17	14	13		16	14	13	
9	21	16	13	11	16	13	11		15	13	11	
10	19	15	12	10	14	12	10		14	12	10	

Zonal Lumen Summary

Zone	Lumens	%Lamp	%Fixture
0-30	324.87	11.4	32.8
0-40	519.97	18.2	52.4
0-60	844.17	29.6	85.1
0-90	991.42	34.8	100.0
90-180	0	0.0	0.0
0-180	991	34.8	100.0

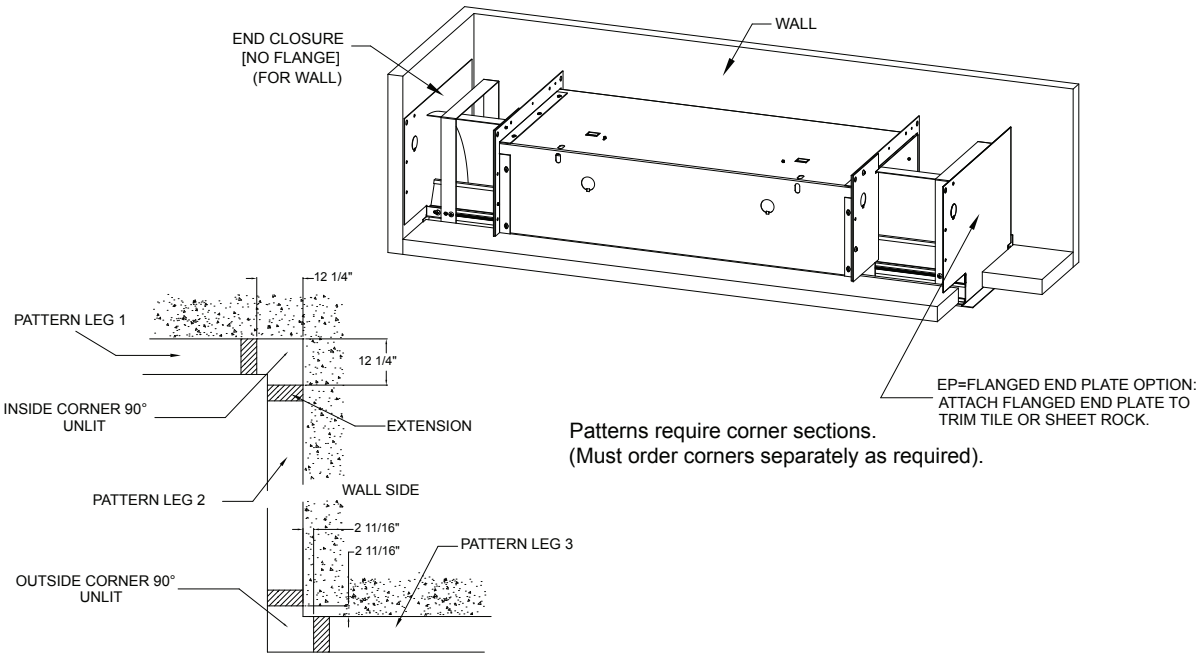
Total Luminaire Efficiency = 34.8%

Candela

Angle	Along II	45°	Across ⊥
0	401	401	401
5	412	411	406
10	424	422	414
15	424	424	412
20	414	416	401
25	393	402	388
30	338	376	366
35	292	350	353
40	220	296	324
45	156	246	302
50	126	185	271
55	98	129	241
60	55	129	207
65	34	100	174
70	18	70	133
75	4	31	92
80	11	23	49
85	4	8	21
90	0	0	0

MOUNTING INFORMATION

NOTE: A pair of End Closures per run are provided by default. No flanged end plates are provided. If flanged end plate is required, order "EP".
EP contains a pair of left and right flanged end plates.



Specify wall length in __ Ft __ Inches. Do not round up.
Table below depicts resulting run lengths based only on nominal lengths.

NOMINAL LENGTH (FEET)	T5		T8		NOMINAL LENGTH (FEET)	T5		T8	
	MINIMUM LENGTH (LIGHTED)	MAXIMUM LENGTH	MINIMUM LENGTH (LIGHTED)	MAXIMUM LENGTH		MINIMUM LENGTH (LIGHTED)	MAXIMUM LENGTH	MINIMUM LENGTH (LIGHTED)	MAXIMUM LENGTH
3'	2' 10 1/4"	3' 10 1/4"	3' 0"	4' 0"	52'	51' 9 1/4"	52' 9 1/4"	52' 0"	53' 0"
4'	3' 10 1/8"	4' 10 1/8"	4' 0"	5' 0"	53'	52' 9 1/8"	53' 9 1/8"	53' 0"	54' 0"
5'	4' 8 3/4"	5' 8 3/4"	5' 0"	6' 0"	54'	53' 8 7/8"	54' 8 7/8"	54' 0"	55' 0"
6'	5' 8 1/2"	6' 8 1/2"	6' 0"	7' 0"	55'	54' 7 1/2"	55' 7 1/2"	55' 0"	56' 0"
7'	6' 8 3/8"	7' 8 3/8"	7' 0"	8' 0"	56'	55' 7 3/8"	56' 7 3/8"	56' 0"	57' 0"
8'	7' 8 1/8"	8' 8 1/8"	8' 0"	9' 0"	57'	56' 7 1/8"	57' 7 1/8"	57' 0"	58' 0"
9'	8' 6 3/4"	9' 6 3/4"	9' 0"	10' 0"	58'	57' 7 1/16"	58' 7 1/16"	58' 0"	59' 0"
10'	9' 6 5/8"	10' 6 5/8"	10' 0"	11' 0"	59'	58' 5 5/8"	59' 5 5/8"	59' 0"	60' 0"
11'	10' 6 3/8"	11' 6 3/8"	11' 0"	12' 0"	60'	59' 5 3/8"	60' 5 3/8"	60' 0"	61' 0"
12'	11' 6 1/4"	12' 6 1/4"	12' 0"	13' 0"	61'	60' 5 1/4"	61' 5 1/4"	61' 0"	62' 0"
13'	12' 4 7/8"	13' 4 7/8"	13' 0"	14' 0"	62'	61' 5 1/16"	62' 5 1/16"	62' 0"	63' 0"
14'	13' 4 5/8"	14' 4 5/8"	14' 0"	15' 0"	63'	62' 3 5/8"	63' 3 5/8"	63' 0"	64' 0"
15'	14' 4 1/2"	15' 4 1/2"	15' 0"	16' 0"	64'	63' 3 1/2"	64' 3 1/2"	64' 0"	65' 0"
16'	15' 4 1/4"	16' 4 1/4"	16' 0"	17' 0"	65'	64' 3 1/4"	65' 3 1/4"	65' 0"	66' 0"
17'	16' 2 7/8"	17' 2 7/8"	17' 0"	18' 0"	66'	65' 3 1/8"	66' 3 1/8"	66' 0"	67' 0"
18'	17' 2 3/4"	18' 2 3/4"	18' 0"	19' 0"	67'	66' 1 3/4"	67' 1 3/4"	67' 0"	68' 0"
19'	18' 2 1/2"	19' 2 1/2"	19' 0"	20' 0"	68'	67' 1 1/2"	68' 1 1/2"	68' 0"	69' 0"
20'	19' 2 3/8"	20' 2 3/8"	20' 0"	21' 0"	69'	68' 1 3/8"	69' 1 3/8"	69' 0"	70' 0"
21'	20' 1 1/16"	21' 1 1/16"	21' 0"	22' 0"	70'	69' 1 1/8"	70' 1 1/8"	70' 0"	71' 0"
22'	21' 0 3/4"	22' 0 3/4"	22' 0"	23' 0"	71'	70' 11 5/8"	71' 11 5/8"	71' 0"	72' 0"
23'	22' 0 5/8"	23' 0 5/8"	23' 0"	24' 0"	72'	71' 11 3/8"	72' 11 3/8"	72' 0"	73' 0"
24'	23' 0 3/8"	24' 0 3/8"	24' 0"	25' 0"	73'	72' 11 1/4"	73' 11 1/4"	73' 0"	74' 0"
25'	24' 10 7/8"	25' 10 7/8"	25' 0"	26' 0"	74'	73' 9 7/8"	74' 9 7/8"	74' 0"	75' 0"
26'	25' 10 5/8"	26' 10 5/8"	26' 0"	27' 0"	75'	74' 9 5/8"	75' 9 5/8"	75' 0"	76' 0"
27'	26' 10 1/2"	27' 10 1/2"	27' 0"	28' 0"	76'	75' 9 1/2"	76' 9 1/2"	76' 0"	77' 0"
28'	27' 9 1/8"	28' 9 1/8"	28' 0"	29' 0"	77'	76' 9 1/4"	77' 9 1/4"	77' 0"	78' 0"
29'	28' 8 7/8"	29' 8 7/8"	29' 0"	30' 0"	78'	77' 7 7/8"	78' 7 7/8"	78' 0"	79' 0"
30'	29' 8 3/4"	30' 8 3/4"	30' 0"	31' 0"	79'	78' 7 3/4"	79' 7 3/4"	79' 0"	80' 0"
31'	30' 8 1/2"	31' 8 1/2"	31' 0"	32' 0"	80'	79' 7 1/2"	80' 7 1/2"	80' 0"	81' 0"
32'	31' 7 1/8"	32' 7 1/8"	32' 0"	33' 0"	81'	80' 7 3/8"	81' 7 3/8"	81' 0"	82' 0"
33'	32' 7 1/16"	33' 7 1/16"	33' 0"	34' 0"	82'	81' 6 1/16"	82' 6 1/16"	82' 0"	83' 0"
34'	33' 6 3/4"	34' 6 3/4"	34' 0"	35' 0"	83'	82' 5 3/4"	83' 5 3/4"	83' 0"	84' 0"
35'	34' 6 5/8"	35' 6 5/8"	35' 0"	36' 0"	84'	83' 5 5/8"	84' 5 5/8"	84' 0"	85' 0"
36'	35' 5 1/4"	36' 5 1/4"	36' 0"	37' 0"	85'	84' 5 3/8"	85' 5 3/8"	85' 0"	86' 0"
37'	36' 5 1/16"	37' 5 1/16"	37' 0"	38' 0"	86'	85' 4 1/16"	86' 4 1/16"	86' 0"	87' 0"
38'	37' 4 7/8"	38' 4 7/8"	38' 0"	39' 0"	87'	86' 3 7/8"	87' 3 7/8"	87' 0"	88' 0"
39'	38' 4 5/8"	39' 4 5/8"	39' 0"	40' 0"	88'	87' 3 5/8"	88' 3 5/8"	88' 0"	89' 0"
40'	39' 3 1/4"	40' 3 1/4"	40' 0"	41' 0"	89'	88' 3 1/2"	89' 3 1/2"	89' 0"	90' 0"
41'	40' 3 1/8"	41' 3 1/8"	41' 0"	42' 0"	90'	89' 2 1/8"	90' 2 1/8"	90' 0"	91' 0"
42'	41' 2 7/8"	42' 2 7/8"	42' 0"	43' 0"	91'	90' 1 7/8"	91' 1 7/8"	91' 0"	92' 0"
43'	42' 2 3/4"	43' 2 3/4"	43' 0"	44' 0"	92'	91' 1 3/4"	92' 1 3/4"	92' 0"	93' 0"
44'	43' 1 3/8"	44' 1 3/8"	44' 0"	45' 0"	93'	92' 1 1/2"	93' 1 1/2"	93' 0"	94' 0"
45'	44' 1 1/8"	45' 1 1/8"	45' 0"	46' 0"	94'	94' 0 1/16"	95' 0 1/16"	94' 0"	95' 0"
46'	45' 1 1/16"	46' 1 1/16"	46' 0"	47' 0"	95'	94' 11 3/4"	95' 11 3/4"	95' 0"	96' 0"
47'	46' 0 3/4"	47' 0 3/4"	47' 0"	48' 0"	96'	95' 11 5/8"	96' 11 5/8"	96' 0"	97' 0"
48'	47' 11 1/4"	48' 11 1/4"	48' 0"	49' 0"	97'	96' 10 1/4"	97' 10 1/4"	97' 0"	98' 0"
49'	48' 11 1/16"	49' 11 1/16"	49' 0"	50' 0"	98'	97' 10 1/16"	98' 10 1/16"	98' 0"	99' 0"
50'	49' 10 7/8"	50' 10 7/8"	50' 0"	51' 0"	99'	98' 9 7/8"	99' 9 7/8"	99' 0"	100' 0"
51'	50' 9 1/2"	51' 9 1/2"	51' 0"	52' 0"	100'	99' 9 5/8"	100' 9 5/8"	100' 0"	101' 0"