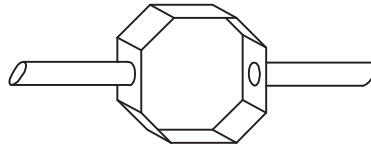
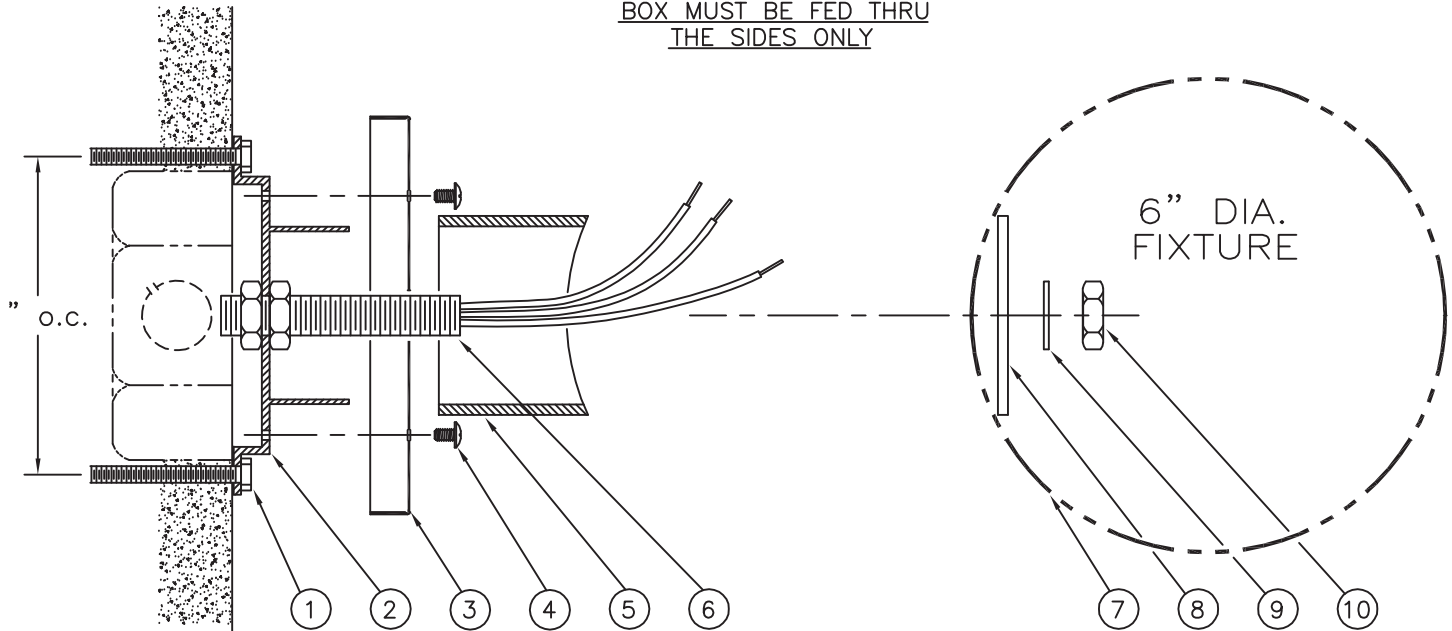


## SERIES 6 WALL MOUNTED INSTALLATION MANUAL



4" OCTAGONAL BOX  
(NOT BY NEO-RAY)  
BOX MUST BE FED THRU  
THE SIDES ONLY



### MOUNTING INSTRUCTION

- ① FASTEN EXTRUDED ALUM. BKT. (ITEM 2) TO WALL.  
NOTE: MAINTAIN ALIGNMENT BETWEEN NIPPLE (ITEM 6)
- ② SLIP CANOPY (ITEM 3), ARM (ITEM 5) THRU NIPPLE (ITEM 6)  
AND FASTEN CANOPY TO MOUNTING BKT. WITH 8/32 SCREWS (ITEM 4)
- ③ SLIP HOUSING INTO NIPPLES & FASTEN USING ITEMS 8, 9 AND 10.

### MATERIAL REQ'D PER BRACKET

- ① ANCHOR BOLTS (BY OTHERS)  
2 REQUIRED
- ② EXTRUDED ALUM. BRACKET  
WITH NIPPLE
- ③ 5" DIA. x 1/2" DEEP CANOPY—  
ANCHOR BOLT COVER. (1 REQUIRED)
- ④ No. 8/32 x 1/4" LONG CANOPY  
SCREWS. (1 REQUIRED)
- ⑤ 1 1/4" x 2 1/2" EXTRUDED ALUM.  
ARM. (1 REQUIRED)
- ⑥ 1/2" O.D. x 3" LONG THREADED  
NIPPLE. (1 REQUIRED)
- ⑦ HOUSING— EXTRUDED ALUM.
- ⑧ BACK-UP LOCKING PLATE  
(1 REQUIRED)
- ⑨ LOCK-WASHER  
1 REQUIRED
- ⑩ LOCK-NUT  
3 REQUIRED

**NOTE:**  
SEE CATALOG SHEETS FOR  
LOCATIONS OF BRACKETS