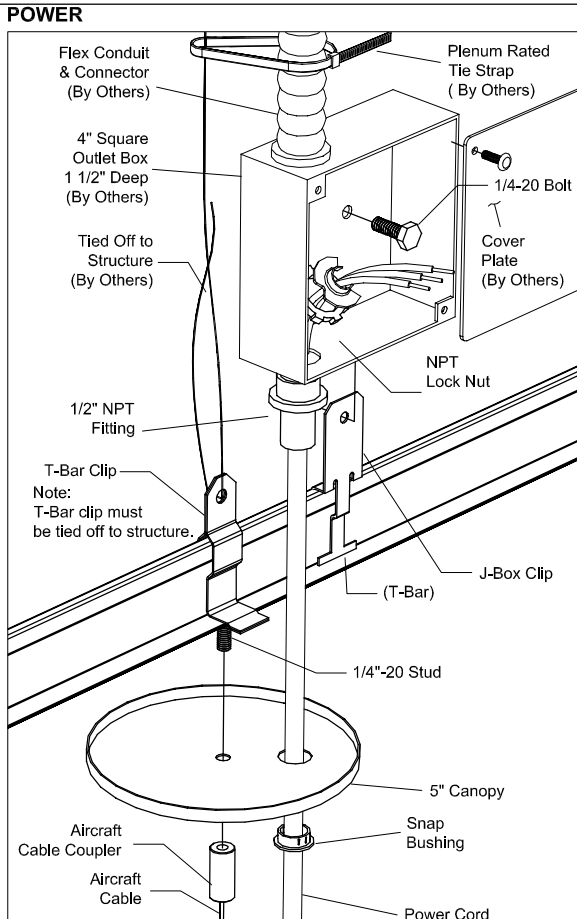


Corelite luminaires are precision tooled for simple trouble free contractor installation. Standard aircraft cable connects directly to a 1/4-20 stud at all mounts. Suspension points are 4'-0", 8'-0" or 12'-0" on center. Standard drop lengths are 12", 15", 18", 21", 24" & 27". Optional cable adjuster (AC48, AC120, AC240, AC300, AC360).

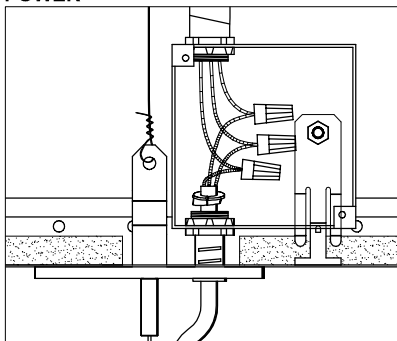
### T-BAR - STANDARD INTERFACE (Connection at Ceiling) Aircraft Cable Mounting AC-\_-T1

#### MOUNT DETAILS

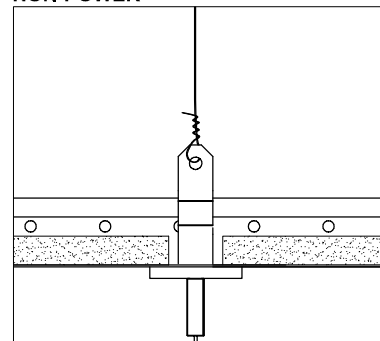
\*FOR ALL CORELITE SUSPENDED LUMINAIRES



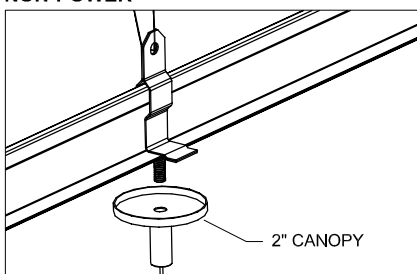
#### POWER



#### NON-POWER



#### NON-POWER

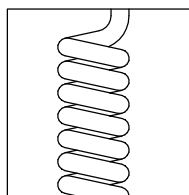


J-Box should be oriented as shown.

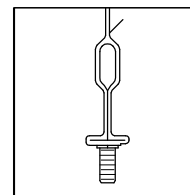
#### FIXTURE INSTALLATION SEQUENCE:

#### OPTIONS:

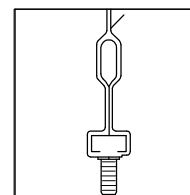
1. Layout mounting locations.
2. Ensure that power feed is at the UL end of the fixture.  
*Power feed: to be installed to local/national electrical codes by a Certified Electrician.*
3. Install T-Bar clip to T-Bar and tie back to structure.
4. Place canopy over caddy clip stud and attach aircraft cable.
5. At the end of the 4 x 4 Square Outlet Box break KO in corner and secure 1/2" NPT fitting to box.
6. Clip J-Box Clip to T-Bar.
7. Secure J-Box to J-Box Clip using 1/4"-20 bolt.
8. Secure Snap Bushing to canopy and align up to NPT fitting.
9. Install solid or flexible conduit from power source to 1/2" cable fitting and secure to tie wire using Plenum Rated Tie Strap.
10. Feed power cord through canopy and J-Box, then install metal strain relief.
11. Attach wires ensuring all connections are properly matched.
12. Cover J-Box using appropriate cover plate.



**Curly Cord (AK):**  
SJT - 18/3 or  
SJT - 18/4  
Curly Cord



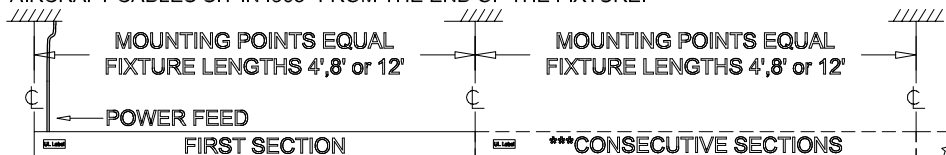
**9/16" T-Bar (T9):**  
This option provides a T-Bar Clip for 9/16" wide T-Bar.



**Slot T-Bar (TS):**  
This option provides a T-Bar Clip for 9/16" x 5/16" slotted T-Bar.

#### MOUNTS LOCATIONS

AIRCRAFT CABLES SIT IN .368" FROM THE END OF THE FIXTURE.

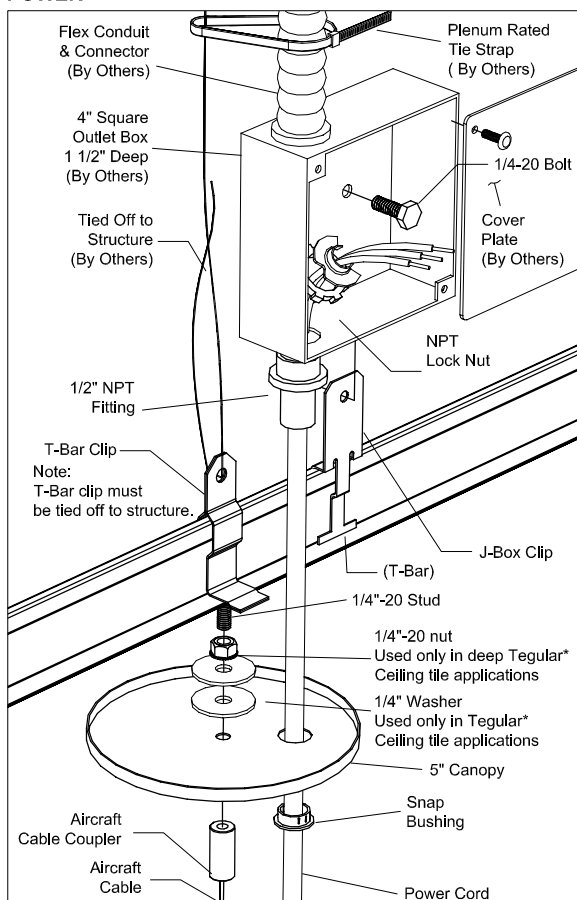


Corelite luminaires are precision tooled for simple trouble free contractor installation. Standard aircraft cable connects directly to a 1/4"-20 stud at all mounts. Suspension points are 4'-0", 8'-0" or 12'-0" on center. Standard drop lengths are 12", 15", 18", 21", 24" & 27". Optional cable adjuster (AC48, AC120, AC240, AC300, AC360).

### T-BAR - \*\*TEGULAR CEILING INTERFACE (Connection at Ceiling) Aircraft Cable Mounting AC-\_-T1

#### MOUNT DETAILS POWER

\*FOR ALL CORELITE SUSPENDED LUMINAIRES



J-Box should be oriented as shown.

#### FIXTURE INSTALLATION SEQUENCE:

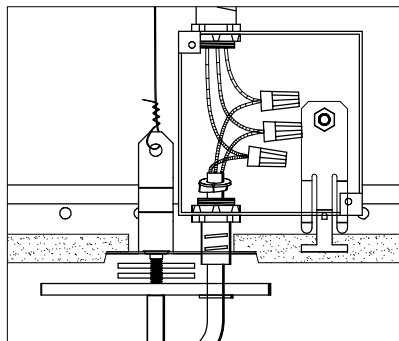
1. Layout mounting locations.
2. Ensure that power feed is at the UL end of the fixture.  
*Power feed: to be installed to local/national electrical codes by a Certified Electrician.*
3. Install T-Bar clip to T-Bar and tie back to structure.
4. Place canopy over caddy clip stud and attach aircraft cable.

For Tegalur Ceiling Tile applications use (2) 1/4" washers (supplied) for spacing between the canopy and the ceiling tile.

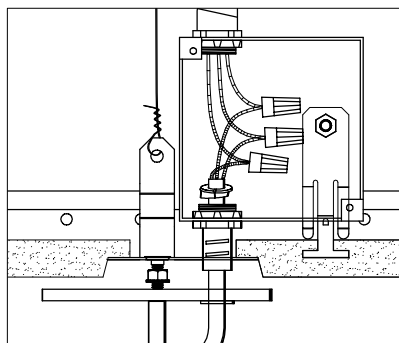
For Deep Tegalur Ceiling Tile applications use 1/4"-20" nut (supplied) for spacing between the canopy and the ceiling tile.

5. At the end of the 4 x 4 Square Outlet Box break KO in corner and secure 1/2" NPT fitting to box.
6. Clip J-Box Clip to T-Bar.
7. Secure J-Box to J-Box Clip using 1/4"-20 bolt.
8. Secure Snap Bushing to canopy and align up to NPT fitting.
9. Install solid or flexible conduit from power source to 1/2" cable fitting and secure to tie wire using Plenum Rated Tie Strap.
10. Feed power cord through canopy and J-Box, then install metal strain relief.
11. Attach wires ensuring all connections are properly matched.
12. Cover J-Box using appropriate cover plate.

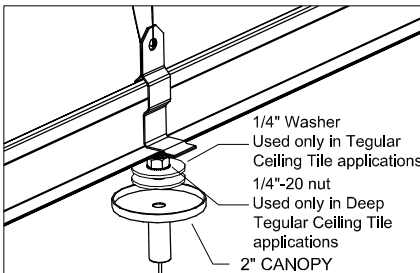
#### POWER TEGULAR\*\*



#### POWER DEEP TEGULAR\*\*



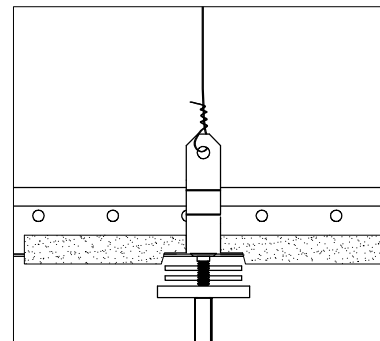
#### NON-POWER



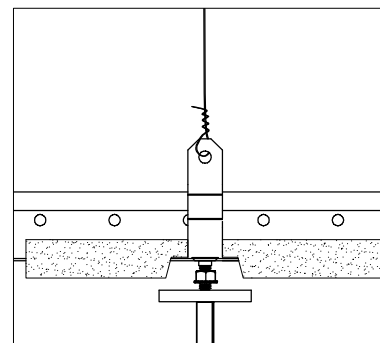
**\*\*All tegular installs must consult factory. Depth of tegular tile will dictate length of 1/4"-20 stud and a 1/4"-20 nut may be required. Depth of tegular tile is required upon sign-off.**

**Tegalur Depth:** \_\_\_\_\_

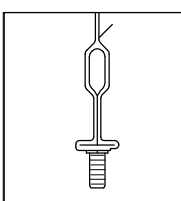
#### NON-POWER TEGULAR\*\*



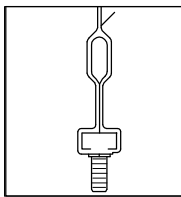
#### NON-POWER DEEP TEGULAR\*\*



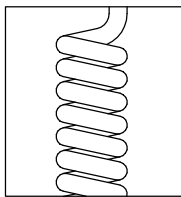
#### OPTIONS:



**9/16" T-Bar (T9):**  
This option provides a T-Bar Clip for 9/16" wide T-Bar.



**Slot T-Bar (TS):**  
This option provides a T-Bar Clip for 9/16" x 5/16" slotted T-Bar.



**Curly Cord (AK):**  
SJT - 18/3 or  
SJT - 18/4  
Curly Cord

\*\*\*\*Standard Stud Lengths are 3/4". If Deep Tegalur Tile installation is required, a 1 1/2" stud will be provided.

#### MOUNTS LOCATIONS

AIRCRAFT CABLES SIT IN .368" FROM THE END OF THE FIXTURE.

