

H A L C O N

NeoCon | 2017



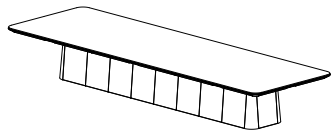
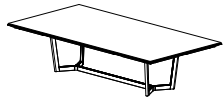
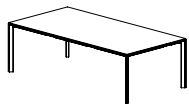
introducing halo



HALO | Tables

HALO brings lasting beauty and innovation to your meeting spaces.

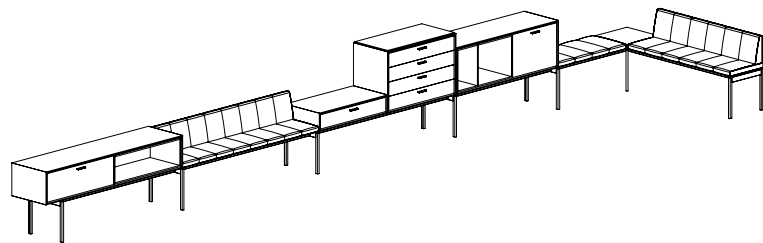
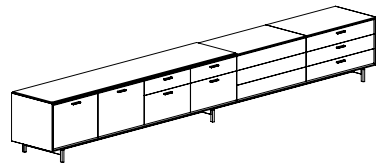
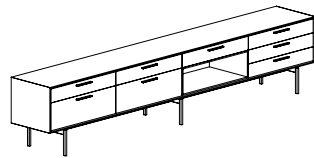
Stunning tables are encircled with the revolutionary Halo edge; providing protection for table and chair while delivering vital connectivity. Conference seating striking the table edge is defended from damage by the remarkable perimeter profile. Table surfaces are equally protected and remain pure in material and form with power and data seamlessly integrated into the Halo edge. Wire management pathways are cleanly concealed in a variety of base styles in a full range of finishes.



HALO | Storage

HALO brings lasting beauty and innovation to your meeting spaces.

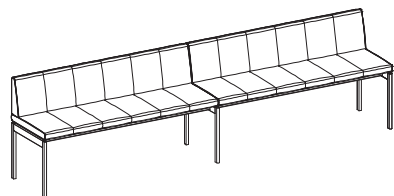
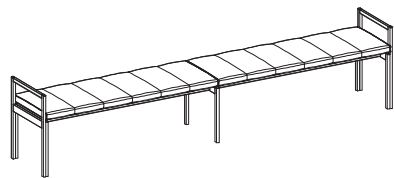
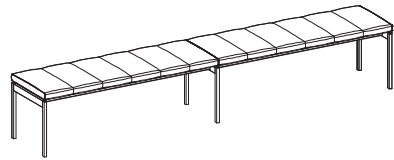
Modern sideboard storage complements Halo tables and seating for both formal and casual spaces. The fully configurable system provides a complete range of components that are practical, functional, and beautiful. Thoughtful modules accommodate refrigeration, cutlery, waste bins, glassware, and more. Available at multiple heights, widths, and depths, Halo will precisely fit your space and your stuff.



HALO | Seating

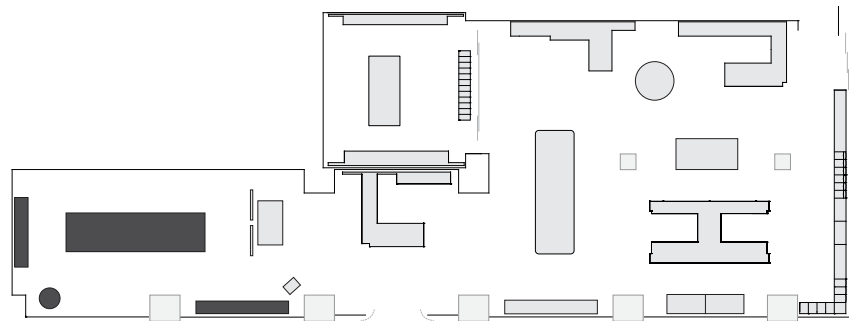
HALO brings lasting beauty and innovation to your meeting spaces.

Beautiful bench seating seamlessly integrates with adjacent sideboard storage, perfectly complementing the Halo collection. Available in two seat depths, an optional back, and a range of sizes, Halo is ideal for conference room gallery seating and informal public spaces.



HALCON | 2017





Mesa

Innovative perimeter power and data access drawers deliver a seamless, intuitive interface that is literally at your fingertips. MESA pairs integrated technology with an uncompromising, award-winning design for the meeting spaces of today and tomorrow.

Conference Table
60d x 216w | Acid-etched glass | Polished Chrome | Silver Sycamore

Occasional Table
42 dia | Acid-etched glass | Polished Chrome | Designer White

Storage Credenza
19.8d x 144w x 26.3h | Glacier White Corian | Polished Chrome

Mitre

Anchored by minimalist detailing and sophisticated materials, Mitre embodies Gary Lee Studios' vision of timeless, elegant design. Pieces integrate perfectly into a variety of environments based on finishes and configurations - from ultra-modern to traditional.

Media Wall
21d x 108w x 84h | Designer White | Glacier IZIT Leather

Motus

MOTUS is a collection of adaptable folding tables and mobile accessories that allows an effortless transformation from board-room to flexible, multi-use space.

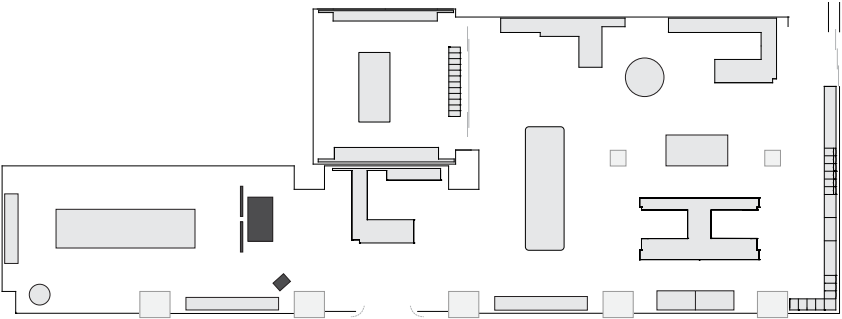
MOTUS pairs uncompromised aesthetics with an innovative and intuitive interface to redefine reconfigurable tables. The design is clean, modern, and timeless. The functional elements of table ganging, caster locking, leveling, cable management, and power distribution have all been thoughtfully engineered to simplify the user experience. Every facet of performance in multipurpose space has been considered and enhanced in the patented design. MOTUS delivers advanced function within the form of a design classic.

design | George Miller-Ramos, James Lawrence, Mark Von Der Heide

Mobile Table
42d x 84w x 29h | Figured Brown Limba | Polished Aluminum

Mobile Lectern
27d x 30w x 44h | Figured Brown Limba | Polished Aluminum

Mobile Screen
48w x 72h | Maharam Kvadrat 460730 | Polished Aluminum



Lex

The LEX office is minimal, utilitarian, timeless. Thin shelves are amazingly robust and light in scale. Beautifully-proportioned casework is built for performance and enduring appeal. LEX is light, lean, and luxurious.

design | STUDIOS Architecture

Adjustable-height Desk

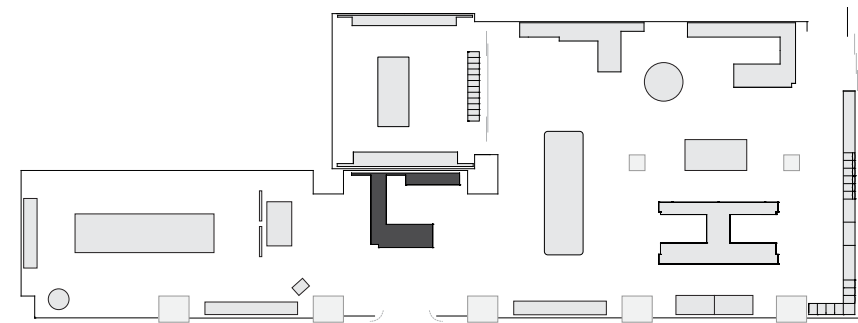
36d x 84w x 29h | Bronze Glass | Taupe Ash | Black Anodized

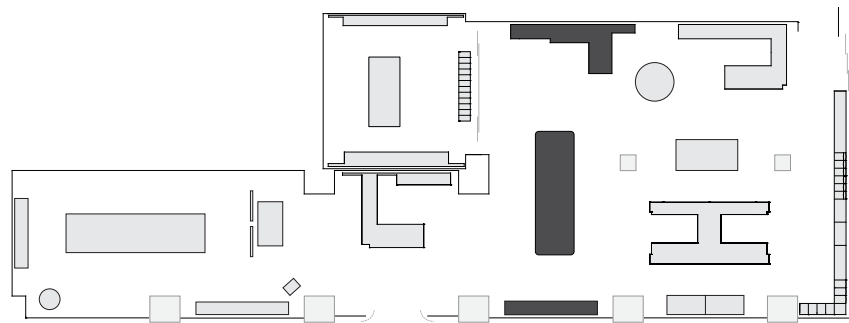
Low Credenza

24d x 108w x 22h | Quarter Cut Taupe Ash

Workwall

15d x 168w x 84h | Bronze Glass | Taupe Ash | Black Anodized





Halo

Stunning tables are encircled with the revolutionary Halo edge; providing protection for table and chair while delivering vital connectivity. The Halo storage system offers a complete range of components that are practical, functional, and beautiful.

Adjustable-height Conference Table
60d x 192w | Walnut | Halo Mink

Storage Credenza
21d x 144w x 29h | Walnut | Matte Bronze Metallic

New Millennia

Clean lines and integral wood finger pulls highlight a modern, time-less aesthetic. Superior design and engineering result in advanced adjustable-height solutions with dual surfaces for maximized work zone efficiency.

Private Office
192w x 84h | Fumed Eucalyptus | Matte Bronze Metallic | Unika Vaev

Halo

Stunning tables are encircled with the revolutionary Halo edge; providing protection for table and chair while delivering vital connectivity.

Meeting Table
48d x 96w x 29h | Black Anodized | Light Mollusk Metallic

Foundry

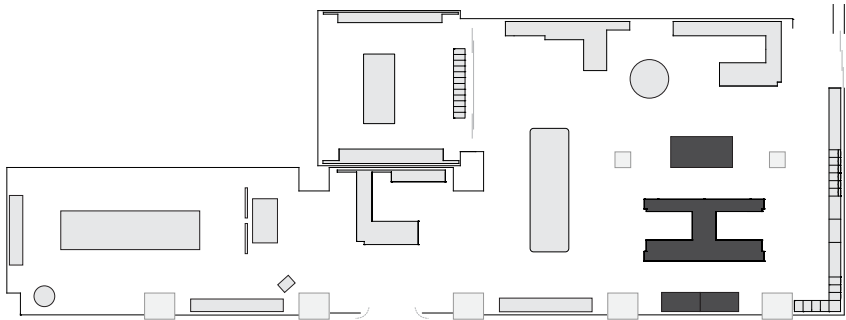
Foundry integrates technology, thoughtful work tools, and complementary materials into the most well-crafted, beautiful millwork system imaginable.

Workstation
42h | Slate Paldao | Nero Forbo | Light Mollusk Metallic

Skill

Mobile tables that are more graceful, more durable, and more beautiful than ever before. Designed by Andreas Krob and offered in three leg frame versions with innovative surfaces and thoughtful connectivity, SKILL is the expert in dynamic, flexible meeting space.

Mobile Table
30 x 60w x 29h | Wilsonart Designer White | Anthracite



Halo

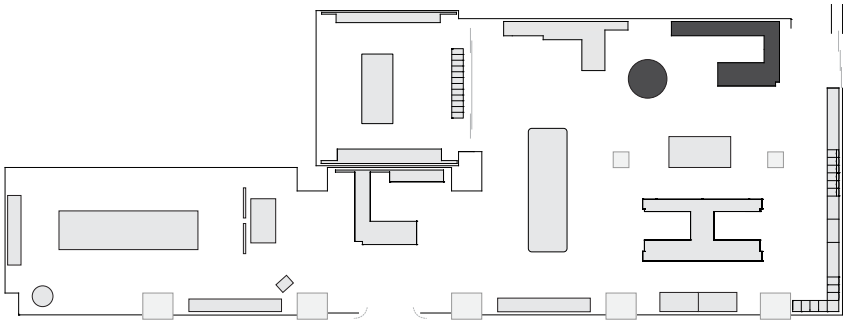
Stunning tables are encircled with the revolutionary Halo edge; providing protection for table and chair while delivering vital connectivity.

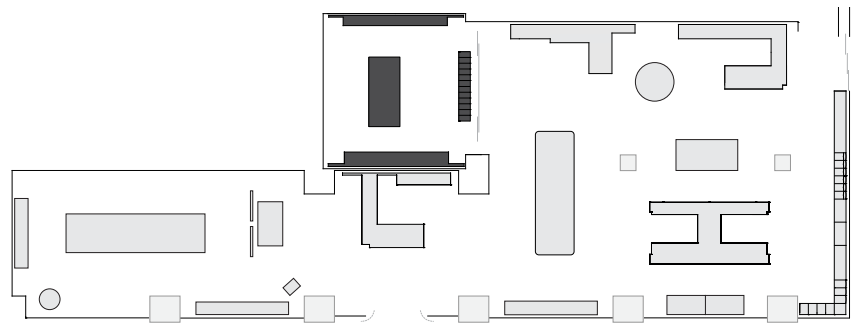
Meeting Table
60dia x 29h | Statuario Marble | Halo Grey | Polished Chrome

New Millennia

New Millennia features clean lines, perfectly matched veneers, and the first beautifully proportioned adjustable-height wood desk. Seamless mitered joinery and perfectly balanced veneers highlight our craft and our quality.

Private Office
168w x 80h | Hazel Paldao | Etched mirror glass





Halo

Stunning tables encircled by the revolutionary Halo edge; providing protection for table and chair while delivering vital connectivity. Modern sideboard storage accommodates refrigeration, cutlery, waste bins, glassware, and more.

Conference Table
60d x 120w x 29h | Glacier White Corian | Halo Black | Brushed Brass

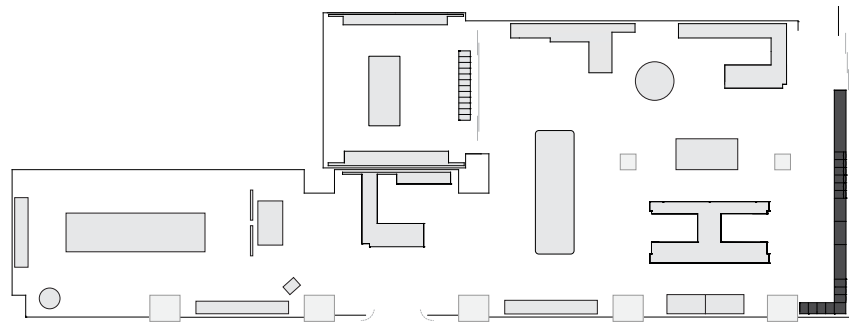
Storage Credenza
21d x 168w x 23.5h | Charcoal Oak | Matte Black Metallic

Bench Seating
18d x 108w x 18.5h | Unika Vaev Feel Satisfied | Black

LEX

LEX is minimal, utilitarian, timeless. Patent-pending thin shelves are amazingly robust and light in scale. Beautifully-proportioned casework is built for performance and enduring appeal. LEX is light, lean, luxurious.

Storage Wall
18d x 162w | Charcoal Oak



Halo

Modern sideboard storage complements Halo tables and seating for both formal and casual spaces. The fully configurable system provides a complete range of components that are practical, functional, and beautiful. Available at multiple heights, widths, and depths, Halo will precisely fit your space and your stuff.

Storage Credenzas
18d x 23.5/29/34.5/40h | Bleached Oak | Designer White | Halo Grey

Light-scale bench seating seamlessly integrates with adjacent sideboard storage, perfectly complementing the Halo collection. Available in two seat depths, an optional back, and a range of sizes, Halo is ideal for conference room gallery seating and versatile benches for informal and public spaces.

Seating
18d | Unika Vaev Feel Confident | Black

OUR ENVIRONMENTAL CONNECTION

From the time I was a child, all my free hours have been spent in the woods and fields or along the streams of Southeastern Minnesota. This love of Nature has informed my deep personal connection with the land and its natural inhabitants.

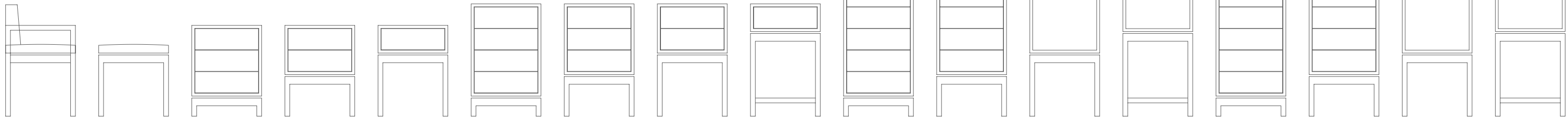
HALCON's commitment to good stewardship and environmentalism is neither new nor driven by market trends, but rather part of our core philosophy that has been present since the inception of the company.

People inherently appreciate the harmony and rhythm of the natural world. Great designers embrace it, and bring it to the interior spaces they create.

Beautiful contemporary design coupled with a thoughtful use of wood and natural materials creates an environment with a sense of inner tranquility. It is conducive to more rational and productive thinking. No matter how urban the setting, all of us benefit from surroundings that connect us with the natural world.

Peter Conway, HALCON Founder and CEO





HALO
design consultant | Gensler



HALCON

WWW.HALCONFURNITURE.COM