



Coalesse Surface Materials Reference Guide August 2017

Note: Actual colors will vary due to printing process.

Availability

Electronic price list updated with release 184.G (U.S.) and 148.G (Canada), dated August 21, 2017.

Transitional products in this specification guide are **maintained for existing customers only** and are likely to be phased out over time. These products are indicated with a . Products that are scheduled to be culled are indicated with an , followed by the last order entry date.

► For a list of all trademarks, refer to the last page of this specification guide.
© 2017 Steelcase Inc.



For Canadian Pricing

Canadian factor can be found at steelcase.com/CADpricing.

Calculate in the following order to avoid rounding errors:

- Multiply the base price and each option by the Canadian factor.
- Round each to the nearest dollar.
- Add base and options for total list price.

Surface Materials-Upholstery	2
Customer's Own Material	3
Flammability Information	5
Upholstery Palette	6
Surface Materials-Leather/Faux	10
Cut Yardage Net Price List	12
Leather and Faux Leather Matrix	14
Leather Palette	16
Faux Leather Palette	19
Surface Materials-Wood	22
Hardwood Matrix	24
Hardwood Stains Palette	26
Veneer Matrix	28
Veneer Palette	29
Surface Materials-Laminate	33
High-Pressure Laminate Matrix	34
High-Pressure Laminate Palette	37
Laminate Edge Band Matrix	40
Recommended Worksurface 3 mm Edge Finishes	42
Surface Materials-Glass	44
Glass Matrix	45
Glass Palette	46
Surface Materials-Metal/Paint	47
Metal/Paints Matrix	48
Metal/Paints Palette	49
Emu Advanced Collection Paint Matrix	51
Emu Paint Palette	52
Surface Materials-Miscellaneous	53
Edges Palette	54
Plastic and Miscellaneous Palette	55
Denizen, Exponents, and SW_1 Exclusives	58
Care and Maintenance	60

Surface Materials- Upholstery

Upholstery

All Coalesse textiles are priced by grades. Some Coalesse fabrics can be treated for flame retardancy, contact Customer Service. All Coalesse products are handcrafted making each unique. Certain fabrics and leathers will appear loose and may differ from like products due to comfort wrinkles when upholstered.

A contrasting welt is available on some products. Consult Customer Service for yardage or square feet requirements and prices. All stripes will be applied vertically unless customer specifies otherwise. Loose cushions on Coalesse products are not fully upholstered (not reversible).

Designtex, Maharam, Steelcase, and select Luna fabrics are graded in our pricing. Simply order Coalesse products with Designtex, Maharam, Steelcase, and select Luna specified. Designtex, Maharam, Steelcase, and select Luna fabrics are graded in on Coalesse products; however, Coalesse does not stock fabrics and can only respond based on Designtex, Maharam, Steelcase, and select Luna fabrics lead times. For current grades, refer to Coalesse website: www.Coalesse.com.

Special Fabric Applications*

Backing*

- Backing information is found on each product page in the Coalesse Specification Guides. Select this option when ordering your product to have backing applied. Price varies by product according to yardage it requires.

*Prices subject to change without notice and an additional 2 week lead time will apply for 54" wide fabrics. Wider fabrics will require 4 week additional lead time.

*Check fabric database to determine if backing is required at www.Coalesse.com.

Seating Upholstery

Coalesse fabrics are priced by grades from 6 through 14 and leathers C and E. Fabrics and leathers may be purchased separately as cut yardage, see page 12. All products are handcrafted, making each unique. Certain fabrics and leathers will appear loose and may differ from like products due to wrinkles when upholstered. A contrasting welt is available on some products. Consult Customer Service for yardage or square feet requirements for pricing.

All stripes will be applied vertically unless customer specifies otherwise. Loose cushions on Coalesse products are not fully upholstered (not reversible). Any graded-in or COM textile should be reviewed with supplier to verify availability. In some cases a textile supplier may require minimums that exceed your furniture order requirements. In these situations, you will be contacted with an option to select a different textile or continue with your original textile selection as a COM-DTP. If you choose to continue with your textile selection as COM-DTP to allow you to order the minimum required, please ship only the textile needed to Coalesse for your furniture order.

Emu Upholstery

Applies to: Emu Advanced Collection

Outdura Collection

Fabric Grade 6

5G30 Natural White
5G31 Kona
5G32 Sandstone
5G33 Cadet Grey
5G34 Stone
5G35 China Red
5G36 Cardinal Red
5G37 Solid Aquamarine
5G38 Canary
5G39 Pesto
5G41 Island Blue

Applies to: Emu Terramare Emu Decorative Fabrics

Fabric Grade 6

DE01 White
DE02 Brown
DE03 Dark Grey
DE04 Light Grey
DE05 Hibiscus
DE06 Turquoise
DE07 Pinstripe

Emu-Text

Fabric Grade 6

5G94 Light Grey
5G95 Grey/Black
5G96 Sand
5G97 Rust

SW_1 Knit

Applies to: SW_1 Collection

5KG0 Stone
5KG1 Grey
5KG2 Brown
5KG3 Black
5KG4 Ivory
5KG5 Coal
5KG6 Garnet
5KG7 Golden
5KG8 Royal

Lagunitas Knit

Applies to: Lagunitas

Grade 1

5K50 Stone
5K51 Grey
5K54 Black
5K58 Ivory
5K59 Coal

Grade 2

5K52 Cement
5K53 Brown
5K55 Garnet
5K56 Golden
5K57 Royal
5K60 Glacier
5K61 Cadet
5K62 Grass
5K63 Forest
5K64 Amber
5K65 Terracotta
5K66 Crimson
5K67 Berry
5K68 Violet
5K69 Khaki

Hexa Upholstery

Applies to Hosu:

Fabric Grade 10

CL50 Dark Grey
CL51 Light Grey
CL52 Blue
CL53 Green
CL54 Red
CL55 Yellow

Fusion Upholstery

Applies to:

Hosu and Massaud

Fabric Grade 11

CL60 Caviar
CL61 Portobello
CL62 Graphite
CL63 Java
CL64 Steam*

* Not available on Hosu

Customer's Own Material

CUSTOMER'S OWN MATERIAL

Coalesse is pleased to cooperate with COM/COL selections. Prior to order placement for exact yardage requirements, a sample cutting of actual COM/COL must be submitted to Coalesse for approval only if fabric approval is not found in Coalesse fabric database. Identify the name and number of units on which the fabric/leather is to be applied. If COM has a repeat the sample should be large enough to show the entire repeat. Coalesse will not accept nor use any painted leathers. A painted leather is described as any suede or leather which is not aniline dyed with the same color throughout the thickness of the hide.

Even after preliminary approval, Coalesse reserves the right to reject COM/COL if necessary when the quality is not satisfactory for the item it is intended to be used on. Once COM/COL is accepted Coalesse assumes no responsibility for its overall appearance, flammability, normal durability, colorfastness, or any other quality, after upholstered on a Coalesse product.

COALESSE STANDARD TO BUY PROGRAM

The Customer's Own Material (COM) Program offers the opportunity for customers to select fabrics that are not offered through the standard Coalesse surface materials program for use on our products. Through the COM program, Coalesse will test your materials for application on Coalesse products. Once approved, you can place your order. Coalesse will facilitate the entire ordering process and give you a production schedule. Coalesse will order the COM fabric directly from the textile manufacturer. For up-to-date information regarding fabric test results for all COM fabrics and details regarding yardage requirements for most Seating lines, visit the fabric database at www.coalesse.com.

CUSTOMERS TO BUY SCHEDULING POLICY/COM/ COL POLICY

COM/COL must be received at manufacturing location no later than 20 working days prior to the order scheduled delivery date. If COM/COL is not received in this time frame, scheduling will move the order's delivery date out to the best available ship date. Customer Service will notify the dealer via e-mail of the order's new scheduled delivery date. Project size order shipment may be affected due to size of order. If the COM/COL is received and the COM/COL requires backing, scheduling will move order out to best available ship date. Backing charges will apply. If COM/COL is received defective or short yardage/sq. ft., the replacement COM/COL order must be received within 3 days to maintain scheduled delivery date on order. It is the responsibility of the dealer to advise Coalesse on what to do with defective materials. In addition, customers may request Coalesse to order for COM/ COL materials.

SQUARE FOOTAGE/YARDAGE REQUIREMENTS

COM and COL price includes application of Customer's Own Material or Leather to frames. All COM and COL should be shipped freight prepaid to designated manufacturing location. Labels will be provided by your Customer Service representative to ensure clear textile identification.

Please have customers send COM/COL and add TAG: COM/ COL.

COM and COL must be identified as follows to prevent order delays:

1. Name and address (Should match purchase order)
2. Your furniture purchase order number/sales order
3. Style number to which fabric is to be applied
4. Supplier name and fabric name, number, and color

COL hides must be rolled for shipment to manufacturing location in a neat manner, avoiding creases and excessive roll marks. All leathers will be rejected if sent in a folded manner.

To determine COL square footage, see COL requirements for each product. Square footage requirements are based on an average hide size of 45-50 square feet of clean, usable leather. If the COL has a smaller average hide size, please consult Customer Service for quotation. Please note, leather is a natural product and all square footage requirements are estimations. The shape of the COL hides supplied and the usable, clean square footage may make it necessary for us to request more leather after COL is received.

Yardage requirements shown are based on 54" width plain material. If fabric design requires vertical/top out, Customer Service should be consulted for additional yards required. If fabric is under 54", refer to fabric database at www.coalesse.com.

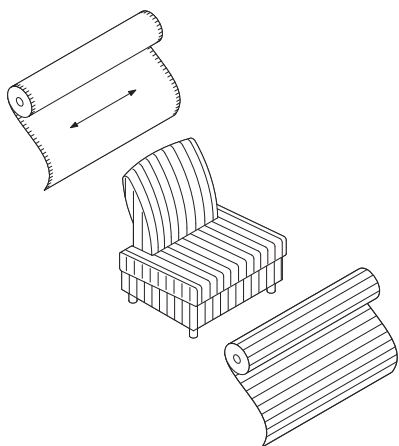
EXCESS COM/COL POLICY

All excess COM/COL will be disposed of after order is completed unless prior arrangements have been made with Coalesse Customer Service. Fedex account number and address to ship to must be referenced. Excess WILL NOT be returned with shipment of furniture.

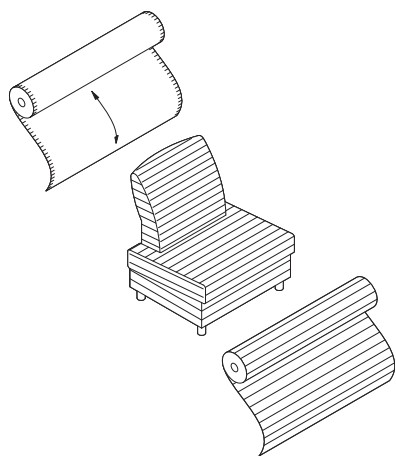
Customer's Own Material *continued*

Cutting Direction Guidelines

Cutting direction is based on the fabric width and the way the fabric is cut from the roll and applied to Coalesse products. There are two cutting directions: railroaded or horizontal.



Horizontal or railroaded (across roll, warp horizontal) means fabric is cut across the roll; selvages are on the top and bottom.



Vertical or top out (down roll, warp vertical) means fabric is cut in the same direction it is woven; selvages are on the left and right sides.

Flammability Information

California Technical Bulletin 133

Definition: California Technical Bulletin 133 (CAL 133) is a flammability test procedure for seating furniture specified in public occupancies. Specifications, test procedures and requirements pertaining to flammability regulations are changing rapidly. Coalesse will make every effort to keep our information and services pertaining to flammability specifications up-to-date.

Coalesse reserves the right to make deletions and additions and cannot guarantee fabric manufacturer materials nor its specifications will not change. A new evaluation will be necessary if materials are altered by manufacturer. This approval information on our website is subject to change without notice. Coalesse is not responsible for textile manufacturer's changes. Contact fabric manufacturer for availability.

For fabrics not pre-approved, please submit the fabric supplier name, fabric name, style number, content, weight, Coalesse product number, and fabric name to be applied to customer service at 1.800.627.6770 or fax to 888.413.5161. Our customer service representative will contact you within 48 hours of your request with information on the fabric's CAL 133 compliance. Actual fabric sample may be required. **If not approved, a burn test may be required at a fee. Contact Customer Service for a quote.**

UFAC – All upholstered seating is constructed to conform to UFAC (Upholstered Furniture Action Council) specifications. This is comparable to NFPA 260. All Coalesse fabrics and leathers meet UFAC specifications and NFPA 260 requirements.

California Bureau of Home Furnishings Technical Bulletin 117 – All Coalesse upholstered seating, fabrics, and leathers meet California Technical Bulletin 117. All products manufactured after May 1, 1993 have CAL 117 label attached.

California Bureau of Home Furnishings Technical Bulletin 133 – On March 1, 1992 Technical Bulletin 133 (TB 133), a fire test for seating furniture in public buildings, became law in California. On and after March 1, 1992 all seating furniture sold in California for use in the public buildings specified in the regulations, must be in compliance with the requirements of TB 133, and each product must be labeled stating that the furniture meets TB 133. If a building is fully sprinklered, compliance with TB 133 becomes discretionary, however, even in sprinklered buildings all furniture must meet the minimum fire standards of the bureau's Technical Bulletin 117.

California Technical Bulletin 133 requires special construction procedures and is based on fabric and product design. For applicable CAL 133 upcharge, refer to up-charge, refer to individual product pages in the specification guide or the fabric database at www.coalesse.com.

Pre-Approved Fabrics – www.coalesse.com If a model or fabric is not listed, consult Customer Service for details at 800.627.6770.

***Note** – California Technical Bulletin 133 is a unit test and requires specific product testing of unit for certification. If certification is required the test of a unit constructed exactly as the unit(s) to be specified in the installation, the cost of the test unit plus the cost of testing (\$500 U.S. net per test) must be added to obtain certification. Coalesse is not responsible for any charges for COM/COL purchased prior to evaluation if unit fails. Textile and unit cannot be returned.

Please consult Customer Service at 1.800.627.6770 or Fax 888.413.5161 for suggested fabrics/leathers, upcharges and minimums required for meeting California Technical Bulletin 133.

General Information – Specifications, test procedures and requirements pertaining to flammability regulations are changing rapidly. Coalesse will make every effort to keep our information and services pertaining to flame specifications up-to-date. However, we do reserve the right to alter the products, fabrics/leathers or upcharges associated with any of the above or any other flame specifications.

When COM or COL is specified for use on Coalesse seating that is to meet the New York Port Authority Code, the COM or COL must be treated to meet this code prior to receipt by Coalesse. Coalesse is not responsible for the flammability treatment or certification of any COM or COL. All upcharges indicated are to be added to list prices.

► See specific product pages in the Coalesse Specification Guides for CAL 133 approval, option, and pricing.

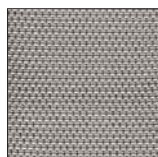
Upholstery Palette Knit

SW_1 – Grade 1

Note: Coalesse reserves the right to reject fabrics when necessary if the quality or construction is not satisfactory for intended use. For most up to date information on fabric usage please check the fabric database on www.coalesse.com.



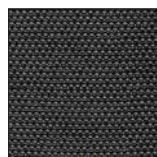
Stone
5KG0



Grey
5KG1



Brown
5KG2



Black
5KG3



Ivory
5KG4



Coal
5KG5



Garnet
5KG6



Golden
5KG7



Royal
5KG8

Lagunitas – Grade 1



Stone
5K50



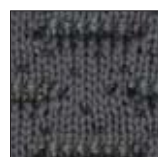
Grey
5K51



Black
5K54

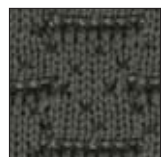


Ivory
5K58



Coal
5K59

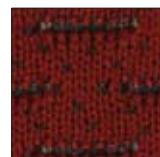
Lagunitas – Grade 2



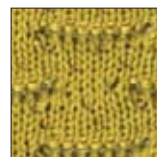
Cement
5K52



Brown
5K53



Garnet
5K55



Golden
5K56



Royal
5K57



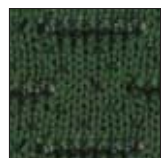
Glacier
5K60



Cadet
5K61



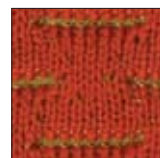
Grass
5K62



Forest
5K63



Amber
5K64



Terracotta
5K65



Crimson
5K66



Berry
5K67



Violet
5K68



Khaki
5K69

Upholstery Palette

Emu Decorative – Grade 6



White
DE01



Brown
DE02



Dark Grey
DE03



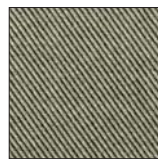
Light Grey
DE04



Hibiscus
DE05



Turquoise
DE06



Pinstripe
DE07

Emu Outdura – Grade 6

For outdoor use on Emu products only

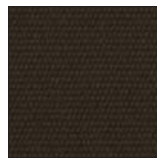
Note: Coalesse reserves the right to reject fabrics when necessary if the quality or construction is not satisfactory for intended use. For most up to date information on fabric usage please check the fabric database on www.coalesse.com.



Natural White
5G30



Kona
5G31



Sandstone
5G32



Cadet Grey
5G33



Stone
5G34



China Red
5G35



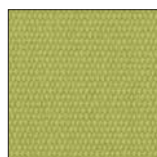
Cardinal Red
5G36



Solid Aquamarine
5G37



Canary
5G38

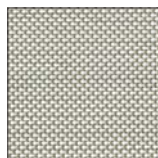


Pesto
5G39

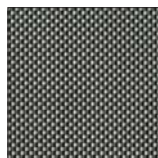


Island Blue
5G41

Emu-Tex – Grade 6



Light Grey
5G94



Grey/Black
5G95



Sand
5G96



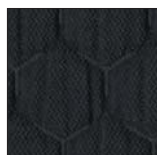
Rust
5G97

Upholstery Palette *continued*

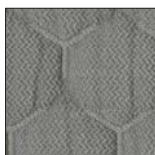
Hexa - Grade 10

For use on Hosu products only

Note: Coalesse reserves the right to reject fabrics when necessary if the quality or construction is not satisfactory for intended use. For most up to date information on fabric usage please check the fabric database on www.coalesse.com.



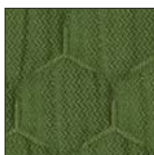
Dark Grey
CL50



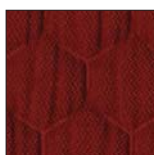
Light Grey
CL51



Blue
CL52



Green
CL53



Red
CL54



Yellow
CL55

Fusion - Grade 11

For use on Hosu and Massaud products only

Note: Coalesse reserves the right to reject fabrics when necessary if the quality or construction is not satisfactory for intended use. For most up to date information on fabric usage please check the fabric database on www.coalesse.com.



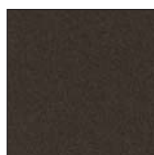
Caviar
CL60



Portobello
CL61



Graphite
CL62



Java
CL63



Steam*
CL64

*Steam is not available on Hosu.

Upholstery Palette - Stitching

Note: Coalesse reserves the right to reject fabrics when necessary if the quality or construction is not satisfactory for intended use. For most up to date information on fabric usage please check the fabric database on www.coalesse.com.

Stitching (Holy day tables)



White
L941 (Matches L151)



Ebony
L900 (Matches L112)



Mica
L904 (Matches L114)



Espresso
L923 (Matches L133)



Saffron
L939



Garnet
L930 (Matches L140)



Scarlet
L925 (Matches L135)



Rosetta
L919



Sky Blue
L910

*ALL PRODUCTS OTHER THAN HOLY DAY TRADITIONAL THREAD COLOR CLOSEST MATCHED TO SURFACE MATERIAL

Surface Materials - Leather/Faux

Leather

ELMOSOFT, ELMORUSTICAL LEATHER CARE

Only the finest hides are used for Elmo leather. Expect some color variations from hide to hide due to the aniline state of the product. Color fading may occur if leather is exposed to direct or intense light. Care is required to allow this product to achieve the rich natural patina that beautiful natural leather develops. The hallmarks of this leather include some naturally occurring markings, such as healed scars, insect bites, stretch marks, and fat wrinkles. Elmorustical's leather treatment is very natural with little protection from spills or body oils. This rich leather will exhibit stains and oils through normal use. Coalesse is not responsible for discoloration, spotting, or staining on this leather.

Special Color Match Leather

Coalesse can provide a special color match in its leather to any supplier's leather color, paint color, carpet color, wall-paper color, etc. Sample to match must be submitted to Coalesse with purchase order. Sample for approval can be supplied if requested.

Note: Minimum order 2,500 sq. ft.

Special Fabric Applications*

Backing*

• Backing information is found on each product page in the Coalesse Specification Guides. Select this option when ordering your product to have backing applied. Price varies by product according to yardage it requires.

*Prices subject to change without notice and an additional 2 week lead time will apply for 54" wide fabrics. Wider fabrics will require 4 weeks additional lead time.

Elmo Leather

Coalesse uses leathers that are provided by Elmo of Sweden.

Elmosoft is a full grain, aniline dyed, semi-aniline finish.

With Elmosoft leather, now recyclable and chromium-free, you have the opportunity to bid on green projects when requested. Elmosoft leathers are never corrected, buffed, or altered in any way. Coalesse purchases only original full grain leathers. The quality of this genuine leather can be felt in the hand immediately. Other leathers are often stiff because of the amount of pigment needed to cover the imperfections of an inferior hide. Using leather of a low quality affects the overall quality of the furniture it is upholstered on. You can feel confident in leather purchased from Coalesse.

Elmosoft

Grade C

Elmosoft

L110	Maritime Blue
L111	Midnight Blue
L112	Ebony
L113	Gunmetal
L114	Mica
L115	Dove Grey
L116	Plum Pleasure
L122	Truffle
L128	Red Birch
L132	Violet
L133	Espresso
L134	Ruby
L135	Scarlet
L138	Bourbon
L139	Cinder
L140	Garnet
L143	Pecan
L144	Chamois
L146	Russet
L147	Saddle
L151	White
L709	Sugar
L711	Parchment
L712	Buff
L716	Khaki
L717	Cameo
L721	Rock
L722	Desert
L723	Storm
L725	Teal
L727	Egyptian Blue
L728	Bright Blue
L730	Hunter
L736	Lemon
L737	Sunshine
L738	Drama
L740	Dazzle
L743	Forest Green
L744	Turtle
L745	Grass
L746	Envy
L747	Cigar
L748	Light Chocolate
L749	Beaver
L750	Bluffstone
L751	Sienna
L752	Oxblood
L753	Dough
L754	Acorn
L755	Peanut Butter
L756	Quinoa
L757	Dark Sand
L758	Mustard
L759	Amber Orange
L760	Bengal
L761	Periwinkle
L762	Canvas
L763	Macadamia
L764	True Blue
L765	Storm Blue
L766	Powder Blue
L767	Blush
L768	Tropical
L769	Mauve
L770	Cadet
L771	Powder Mint
L772	Timberwolf
L773	Chalice
L774	Oil
L775	Coyote

Elmorustical Leather

Elmorustical is a full top grain, aniline dyed leather.

Elmorustical has a grain which varies in structure and offers outstanding comfort. It is an aniline leather with all the distinct features of the natural hide.

Only the finest hides are used for Elmorustical leather. Expect some color variations from hide to hide due to the aniline state of the product. Color fading may occur if leather is exposed to direct or intense light. Care is required to allow this product to achieve the rich natural patina that beautiful leather develops. The hallmarks of this leather include some naturally occurring markings such as healed scars, insect bites, stretch marks, and fat wrinkles. Elmorustical's leather treatment is very natural with little protection from spills or body oils. This rich leather will exhibit stains and oils through normal use. Coalesse is not responsible for discoloration, spotting, or staining on this leather.

Grade E

Elmorustical

L318	Loam
L319	Ebony
L321	Beige
L323	Buff
L325	Camel
L326	Charbrown
L330	Flame
L332	Honey
L334	Mist Green
L337	Russet
L338	Rust
L363	Tendrill
L364	Fog
L365	Sunflower
L366	Terra Cotta
L367	Cadet
L368	Marine
L369	Mallard
L370	Smoke
L371	Merlot
LD54	Twilight

Elmotique

L310	Sage Brush
L311	Flaxen
L312	Earth
L313	Clay
L314	Blue Mountain
L315	Juniper

Saddle Leather

Applies to: Saddle Stitch Color Options For Holy Day Leather Table (only)

L925	Scarlet (matches L135)
L910	Sky Blue
L919	Rosetta
L941	White (matches L151)
L904	Mica (matches L114)
L939	Saffron
L930	Garnet (matches L140)
L923	Espresso (matches L133)
L900	Ebony (matches L112)

Surface Materials - Leather/Faux

Carl Hansen**Loke Leather**

5072	Loke 7210
5073	Loke 7050
5074	Loke 7270
5075	Loke 7170
5076	Loke 7150
5077	Loke 7160
507C	Loke 7060
507D	Loke 7100
507E	Loke 7110
507F	Loke 7140
507G	Loke 7240
507H	Loke 7310
507J	Loke 7732
507K	Loke 7744
507L	Loke 7748
507M	Loke 7763
507N	Loke 7766

Thor Leather

5394	Thor 300
5395	Thor 307
5396	Thor 306
5398	Thor 301
5399	Thor 390
539A	Thor 325
539C	Thor 332
539E	Thor 359
539F	Thor 310
539G	Thor 350
539H	Thor 377

SIF Leather

507P	SIF 91
507Q	SIF 95
507R	SIF 93
507T	SIF 90
507U	SIF 98
507Y	SIF 92

Cowhides

507W	SIF Brown/White
508D	SIF Black/White

Emu Terramare**Emu Eco-Leather**

EC01	White
EC02	Brown
EC03	Grey/Green
EC04	Black

Faux Leather

Coalesse offers a variety of faux leathers. Not all faux leathers are available on all products, check seating matrix on 14 to determine availability.

Grade 11**Destiny**

DY01	Black
DY02	Raisin
DY03	Blueberry
DY04	Chestnut
DY05	Cedar
DY06	Black Rose
DY07	Wine
DY08	Patine
DY09	Dune
DY10	Truffle
DY11	Oak
DY12	Newport
DY13	Evergreen
DY14	Storm
DY15	Juniper
DY16	Olive
DY17	Mocha
DY18	Ash
DY21	Butter
DY23	Deep Red
DY24	Eggshell
DY26	Parchment
DY27	Periwinkle
DY30	Royal Purple
DY31	Saddle
DY32	Cactus Green
DY33	Cypress
DY34	Mink
DY35	Football
DY36	Root

Finesse

AM00	White Cloud
AM01	Gelato
AM02	Winter White
AM04	Mushroom
AM06	Charbrown
AM08	Iceberg
AM09	Gravel
AM10	Colonial Blue
AM24	Rye
AM25	Barley
AM26	Stucco
AM27	Beaver
AM28	Otter
AM65	Bordeaux
AM66	Navy
AM67	Cinder
AM80	Cameo
AM81	Oyster Grey
AM83	Taupe
AM85	Chestnut
AM87	Indigo
AM88	Bone
AM89	Jet Black
AM92	Burgundy
AM93	Hunter Green
AM98	Oxford Brown

Ovation

O500	Dark Brown
O501	Light Grey
O502	Sage
O503	Indigo
O504	Lilac
O505	Terra
O506	Moss
O507	Teal
O508	Stone
O509	Cappuccino

Panache

P800	Ebony
P801	Cactus
P802	Sherwood
P803	Teal Blue
P804	Sweet Sage
P805	Coffee
P806	True Taupe
P807	Cashew
P808	Acorn
P809	Redwood
P810	Exotic Orchid
P811	Maize
P812	Chartreuse
P813	Regal Blue

Prestige

AFA1	Onyx
AFB2	Soft White
AFC3	Saxe Blue
AFD3	Buff
AFDG	Antique White
AFE1	Sandstone
AFH1	Pecan
AFH2	Buttercream
AFI1	Havana
AFI2	Brick
AFL8	French Grey
AFP1	Willow
AFP2	Boxwood Green
AFPA	Tree Moss
AFPC	Celadon
AFS3	Wild Plum

Grade 12**Elegance**

EL01	Ivory
EL02	Cream
EL03	Char
EL04	Saddle
EL05	Dune
EL06	Camel
EL07	Sage
EL08	Gray
EL09	Walnut
EL10	Burgundy
EL11	Green
EL12	Navy
EL13	Black

Grade 13**Destiny Perforated**

DP01	Black
DP02	Raisin
DP03	Blueberry
DP04	Chestnut
DP05	Cedar
DP06	Black Rose
DP07	Wine
DP08	Patine
DP09	Dune
DP10	Truffle
DP11	Oak
DP12	Newport
DP13	Evergreen
DP14	Storm
DP15	Juniper
DP16	Olive
DP17	Mocha
DP21	Butter
DP23	Deep Red
DP24	Eggshell
DP26	Parchment
DP27	Periwinkle
DP30	Royal Purple
DP31	Saddle
DP32	Cactus Green
DP33	Cypress
DP34	Mink
DP35	Football
DP36	Root

Finesse Perforated

AP00	White Cloud
AP01	Gelato
AP02	Winter White
AP04	Mushroom
AP06	Charbrown
AP08	Iceberg
AP09	Gravel
AP10	Colonial Blue
AP24	Rye
AP25	Barley
AP26	Stucco
AP27	Beaver
AP28	Otter
AP65	Bordeaux
AP66	Navy
AP67	Cinder
AP80	Cameo
AP81	Oyster Grey
AP83	Taupe
AP85	Chestnut
AP87	Indigo
AP88	Bone
AP89	Jet Black
AP92	Burgundy
AP93	Hunter Green
AP98	Oxford Brown

Panache Perforated

PR00	Ebony
PR01	Cactus
PR02	Sherwood
PR03	Teal Blue
PR04	Sweet Sage
PR05	Coffee
PR06	True Taupe
PR07	Cashew
PR08	Acorn
PR09	Redwood
PR10	Exotic Orchid
PR11	Maize
PR12	Chartreuse
PR13	Regal Blue

Prestige Perforated

APA1	Onyx
APB2	Soft White
APC3	Saxe Blue
APD3	Buff
APDG	Antique White
APE1	Sandstone
APH1	Pecan
APH2	Buttercream
API1	Havana
API2	Brick
APL8	French Grey
APP1	Willow
APP2	Boxwood Green
APPA	Tree Moss
APPC	Celadon
APS3	Wild Plum

Cut Yardage Net Price List

FABRIC NAME	Under 60 Yards	60 Yards & Over	
Elegance®	\$86.00/yd.	\$82.00/yd.	
Finesse®	\$52.00/yd.	\$51.00/yd.	
Finesse® Perforated (min. 5 yds)	\$63.00/yd.	\$62.00/yd.	
Prestige®	\$57.00/yd.	\$54.00/yd.	
Prestige® Perforated (min. 5 yds)	\$68.00/yd.	\$65.00/yd.	
Destiny®	\$58.00/yd.	\$56.00/yd.	
Destiny® Perforated (min. 5 yds)	\$69.00/yd.	\$66.00/yd.	
Ovation	\$58.00/yd.	\$54.00/yd.	
Panache	\$58.00/yd.	\$56.00/yd.	
LEATHER NAME	Under 500 sq. ft.	500-1000 sq. ft.	Over 1000 sq. ft.
Elmosoft	\$9.00/sq. ft.	\$8.00/sq. ft.	\$7.50/sq. ft.
Elmorustical*	\$11.00/sq. ft.	\$9.00/sq. ft.	\$8.50/sq. ft.

*See page 60 for Elmorustical Leather care.

ORDERING INFORMATION

- F.O.B. High Point, North Carolina
- Minimum Order Requirements
- Fabric: 1 yd. - 1/8 yd. increments.
- Leather: 1 full hide (avg. sq. ft./hide - 50).
- All orders will be filled in full hides only.
- Overage will be invoiced accordingly.
- Cancelled textile orders are subject to a 30% restocking fee. Order must be cancelled 5 days before ship date.
- Special match leather: 2,500 sq. ft. minimum (Check delivery date)
- The embossing techniques used on Novasuede Perforated, to achieve these looks involve very high temperatures. Color and shade may vary slightly based on the fiber density being embossed.

Due to the natural processes of dying, sanding and embossing necessary to achieve these special looks, actual production may vary slightly in appearance from the swatches shown.

COALESSE TEXTILE WARRANTY

Coalesse textile merchandise is produced in accordance with Coalesse high standards. Coalesse does not guarantee, warrant or accept any responsibility whatsoever by reason of its fabrics or leathers fading, wearing, cracking, shrinking, stretching, tearing, seam slippage, alteration in color due to any finish treatment (flameproofing, stain repellent, etc.) or discoloration from liquid contact. Printed textiles are not warranted against irregularity in register. Coalesse is not responsible for dye lot differences or discrepancies in widths of fabrics. Coalesse does not guarantee, warrant or represent an exact color match to cuttings, tabs, memos or sample cards. Coalesse does not warrant exact matching of color or grain of leather. Leather hides may contain certain natural marks, scars, scratches, wrinkles and shade variations within hides, etc., considered by leather tanneries and Coalesse to be inherent characteristics part of the natural beauty of leather and the size or location of such markings cannot be controlled. In any event, upon inspection, Coalesse's responsibility shall be limited to either replacement of merchandise or refund of purchase price at Coalesse's option. The foregoing constitutes the sole and exclusive remedy of the customer. Coalesse is not responsible for the application or installation of our products. In no event shall Coalesse be responsible for any consequential damages or any charges, costs, expenses, or obligations other than as expressly herein set forth. Coalesse makes no other warranties, expressed or implied, as to any product sold by Coalesse. All other warranties (including any warranty of merchantability or fitness for any particular purpose) are hereby excluded.



For Canadian Pricing

Multiply U.S. Price by the Canadian price factor.

► See page 1 for details.

Cut Yardage Net Price List

Leather and Faux Leather Matrix

Note: Coalesse reserves the right to reject fabrics when necessary if the quality or construction is not satisfactory for intended use. For most up to date information on fabric usage please check the fabric database on www.coalesse.com.

Legend	Elmosoft Grade C	Elmotique Grade E	Elmonustical Grade E	Emu Eco-Leather	Luxe Leather	Destiny Grade 11	Destiny Perforated Grade 13	Prestige Grade 11	Prestige Perforated Grade 13	Finesse Grade 11	Finesse Perforated Grade 13	Elegance Grade 12	Panache Grade 11	Panache Perforated Grade 13	Ovation Grade 11	Thor Leather	SIF Leather
• = Not available																	
■ = Available																	
◻ = Must be ordered as COM or COL																	
◻ = Available but will have comfort wrinkles																	
► See specification pages in the Coalesse Specification Guides for details.																	
Airport Lounge Chair CH401	•	•	•	•	■	•	•	•	•	•	•	•	•	•	•	■	■
Astor	■	■	■	•	◻	■	■	■	■	■	■	■	■	■	■	•	•
Await	■	■	■	•	◻	■	■	■	■	■	■	■	■	■	■	•	•
Bindu	■	■	■	•	◻	■	■	■	■	■	■	■	■	■	■	•	•
Bix	■	•	■	•	•	■	•	■	•	■	•	■	■	■	■	•	•
Bob	■	•	■	•	•	■	•	■	•	■	•	■	■	■	■	•	•
Capa	■	■	■	•	◻	■	■	■	■	■	■	■	■	■	■	•	•
Chord	■	•	■	•	◻	■	■	■	■	■	■	■	■	■	■	•	•
Circa	■	■	■	•	◻	■	■	■	■	■	■	■	■	■	■	•	•
Coupe	■	■	■	•	◻	■	■	■	■	■	■	■	■	■	■	•	•
Davos	■	•	■	•	•	■	•	■	•	■	•	■	•	■	•	•	•
Elbow Chair CH20	•	•	•	•	■	•	•	•	•	•	•	•	•	•	•	■	■
Emu Indoor Cushion	■	■	■	•	•	■	■	■	■	■	■	■	■	•	■	•	•
Emu Terramare	•	•	•	■	•	•	•	•	•	•	•	•	•	•	•	•	•
Enea	■	■	■	•	◻	■	■	■	■	■	■	■	■	■	■	•	•
Enea Lottus	■	•	■	•	•	■	•	■	•	■	•	■	■	•	■	•	•
Evaneau	■	■	■	•	◻	■	■	■	■	■	■	■	■	■	■	•	•
Exponents (Benches)	■	■	■	•	•	■	•	■	•	■	•	■	■	•	■	•	•
Holy Day	■	•	■	•	•	■	•	■	•	■	•	■	■	•	■	•	•
Joel	■	•	■	•	•	■	•	■	•	■	•	■	■	•	■	•	•
Kathryn	■	■	■	•	◻	■	■	■	■	■	■	■	■	■	■	•	•
Ladderback Lounge Chair CH44	•	•	•	•	■	•	•	•	•	•	•	•	•	•	•	■	■
Last Minute	■	•	■	•	•	■	•	■	•	■	•	■	■	•	■	•	•
Lounge Seating CH100 Series	•	•	•	•	■	•	•	•	•	•	•	•	•	•	•	■	■
Millbrae	■	■	■	•	◻	■	■	■	■	■	■	■	■	■	■	•	•
Oculus Lounge Chair CH468	•	•	•	•	■	•	•	•	•	•	•	•	•	•	•	■	■
Shell Lounge Chair CH07	•	•	•	•	■	•	•	•	•	•	•	•	•	•	•	■	■
Wishbone Chair CH24	•	•	•	•	■	•	•	•	•	•	•	•	•	•	•	•	•
CH88 Chair	•	•	•	•	■	•	•	•	•	•	•	•	•	•	•	■	■

► Continued on next page

Disclaimer: Coalesse is pleased to provide this information. However, even after preliminary approval, Coalesse reserves the right to reject fabrics/leathers when necessary if the quality or construction is not satisfactory for the item it is intended for use on. Coalesse reserves the right to evaluate data daily and make any necessary changes or improvements to the information provided. Textile recommendations do not imply a warranty for the textiles. The textile manufacturer provides all warranties for textiles. All trademarks and trade names are the property of the different manufacturers. All pricing quotes for product should be obtained from your local Sales Representative or a Coalesse Customer Service Representative. Recommendations such as backing and CAL 133 will require additional cost and may require additional lead-time. All specifications are subject to change without notice.

Leather and Faux Leather Matrix

Note: Coalesse reserves the right to reject fabrics when necessary if the quality or construction is not satisfactory for intended use. For most up to date information on fabric usage please check the fabric database on www.coalesse.com.

► Continued, from previous page

Legend

- = Not available
- = Available
- ☐ = Must be ordered as COM or COL
- ☐ = Available but will have comfort wrinkles

► See specification pages in the Coalesse Specification Guides for details.

	Elmosoft Grade C	Elmotique Grade E	Elmorustical Grade E	Emu Eco-Leather	Loke Leather	Destiny Grade 11	Destiny Perforated Grade 13	Prestige Grade 11	Prestige Perforated Grade 13	Finesse Grade 11	Finesse Perforated Grade 13	Elegance Grade 12	Panache Grade 11	Panache Perforated Grade 13	Ovation Grade 11	Thor Leather	SIF Leather
Lagunitas	■	•	■	•	•	■	■	■	■	■	■	■	■	■	■	•	•
Lox	■	■	■	•	•	■	•	■	•	■	•	■	■	•	■	•	•
Massaud	■	•	■	•	•	•	•	■	■	■	■	■	■	■	■	•	•
Montara650	■	■	■	•	•	■	•	■	•	■	•	■	■	■	■	•	•
Passerelle	■	■	■	•	☐	■	■	■	■	■	■	■	■	■	■	•	•
Ripple	■	■	■	•	☐	■	■	■	■	■	■	■	■	■	■	•	•
Sidewalk	■	■	■	•	☐	■	■	■	■	■	■	■	■	■	■	•	•
SW_1	■	•	■	•	•	■	•	■	•	■	•	■	■	•	■	•	•
Swathmore	■	■	■	•	☐	■	■	■	■	■	■	■	■	■	■	•	•
Swathmore Grande	■	■	■	•	☐	■	■	■	■	■	■	■	■	■	■	•	•
Switch	■	■	■	•	☐	■	■	■	■	■	■	■	■	■	■	•	•
Thoughtful	■	■	■	•	☐	■	■	■	■	■	■	■	■	■	■	•	•
Together	☐	•	☐	•	•	☐	•	☐	•	☐	•	☐	☐	•	■	•	•
Topo Lounge	■	•	■	•	•	■	•	■	•	■	•	■	■	•	■	•	•
Topo Mobile Lounge	■	•	■	•	•	■	•	■	•	■	•	■	■	•	■	•	•
Visalia	■	■	■	•	☐	■	■	■	■	■	■	■	■	■	■	•	•
Wing Lounge Chair CH445	•	•	•	•	■	•	•	•	•	•	•	•	•	•	•	■	■
Wrapp	■	•	■	•	•	■	■	■	■	■	■	■	■	■	■	•	•

Disclaimer: Coalesse is pleased to provide this information. However, even after preliminary approval, Coalesse reserves the right to reject fabrics/leathers when necessary if the quality or construction is not satisfactory for the item it is intended for use on. Coalesse reserves the right to evaluate data daily and make any necessary changes or improvements to the information provided. Textile recommendations do not imply a warranty for the textiles. The textile manufacturer provides all warranties for textiles. All trademarks and trade names are the property of the different manufacturers. All pricing quotes for product should be obtained from your local Sales Representative or a Coalesse Customer Service Representative. Recommendations such as backing and CAL 133 will require additional cost and may require additional lead-time. All specifications are subject to change without notice.

Leather Palette

Note: Coalesse reserves the right to reject fabrics when necessary if the quality or construction is not satisfactory for intended use. For most up to date information on fabric usage please check the fabric database on www.coalesse.com.

► See Leather and Faux Leather Matrix for availability by product list, page 14.

Elmosoft

							
Maritime Blue L110	Midnight Blue L111	Ebony L112	Gunmetal L113	Mica L114	Dove Grey L115	Plum Pleasure L116	Truffle L122
							
Red Birch L128	Violet L132	Espresso L133	Ruby L134	Scarlet L135	Bourbon L138	Cinder L139	Garnet L140
							
Pecan L143	Chamois L144	Russet L146	Saddle L147	White L151	Sugar L709	Parchment L711	Buff L712
							
Khaki L716	Cameo L717	Rock L721	Desert L722	Storm L723	Teal L725	Egyptian Blue L727	Bright Blue L728
							
Hunter L730	Lemon L736	Sunshine L737	Drama L738	Dazzle L740	Forest Green L743	Turtle L744	Grass L745
							
Envy L746	Cigar L747	Light Chocolate L748	Beaver L749	Bluffstone L750	Sienna L751	Oxblood L752	Dough L753
							
Acorn L754	Peanut Butter L755	Quinoa L756	Dark Sand L757	Mustard L758	Amber Orange L759	Bengal L760	Periwinkle L761

Leather Palette

Note: Coalesse reserves the right to reject fabrics when necessary if the quality or construction is not satisfactory for intended use. For most up to date information on fabric usage please check the fabric database on www.coalesse.com.

► See Leather and Faux Leather Matrix for availability by product list, page 14.

Elmosoft (continued)



Surface Materials -
Leather/Faux

Elmorustical



Elmotique



Leather Palette continued

Note: Coalesse reserves the right to reject fabrics when necessary if the quality or construction is not satisfactory for intended use. For most up to date information on fabric usage please check the fabric database on www.coalesse.com.

► See Leather and Faux Leather Matrix for availability by product list, page 14.

Loke (Carl Hansen only)



5072
Loke 7210



5073
Loke 7050



5074
Loke 7270



5075
Loke 7170



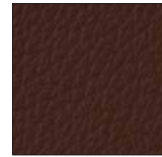
5076
Loke 7150



5077
Loke 7160



507C
Loke 7060



507D
Loke 7100



507E
Loke 7110



507F
Loke 7140



507G
Loke 7240



507H
Loke 7310



507J
Loke 7732



507K
Loke 7744



507L
Loke 7748



507M
Loke 7763



507N
Loke 7766

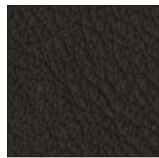
Thor (Carl Hansen only)



5394
Thor 300



5395
Thor 307



5396
Thor 306



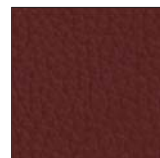
5398
Thor 301



5399
Thor 390



539A
Thor 325



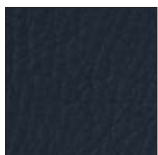
539C
Thor 332



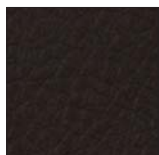
539E
Thor 359



539F
Thor 310



539G
Thor 350



539H
Thor 377

SIF (Carl Hansen only)



507P
SIF 91



507Q
SIF 95



507R
SIF 93



507T
SIF 90



507U
SIF 98



507Y
SIF 92

Cowhides



507W
SIF Brown/White



508D
SIF Black/White

Faux Leather Palette

Note: Coalesse reserves the right to reject fabrics when necessary if the quality or construction is not satisfactory for intended use. For most up to date information on fabric usage please check the fabric database on www.coalesse.com.

► See Leather and Faux Leather Matrix for availability by product list, page 14.

Destiny

							
Black DY01	Raisin DY02	Blue berry DY03	Chestnut DY04	Cedar DY05	Black Rose DY06	Wine DY07	Patine DY08
							
Dune DY09	Truffle DY10	Oak DY11	Newport DY12	Evergreen DY13	Storm DY14	Juniper DY15	Olive DY16
							
Mocha DY17	Ash DY18	Butter DY21	Deep Red DY23	Eggshell DY24	Parchment DY26	Periwinkle DY27	Royal Purple DY30
							
Saddle DY31	Cactus Green DY32	Cypress DY33	Mink DY34	Football DY35	Root DY36		

Surface Materials -
Leather/Faux

Elegance

							
Ivory EL01	Cream EL02	Char EL03	Saddle EL04	Dune EL05	Camel EL06	Sage EL07	Grey EL08
							
Walnut EL09	Burgundy EL10	Green EL11	Navy EL12	Black EL13			

Emu Eco-Leather (Emu Terramare only)

			
White EC01	Brown EC02	Grey/Green EC03	Black EC04

Faux Leather Palette continued

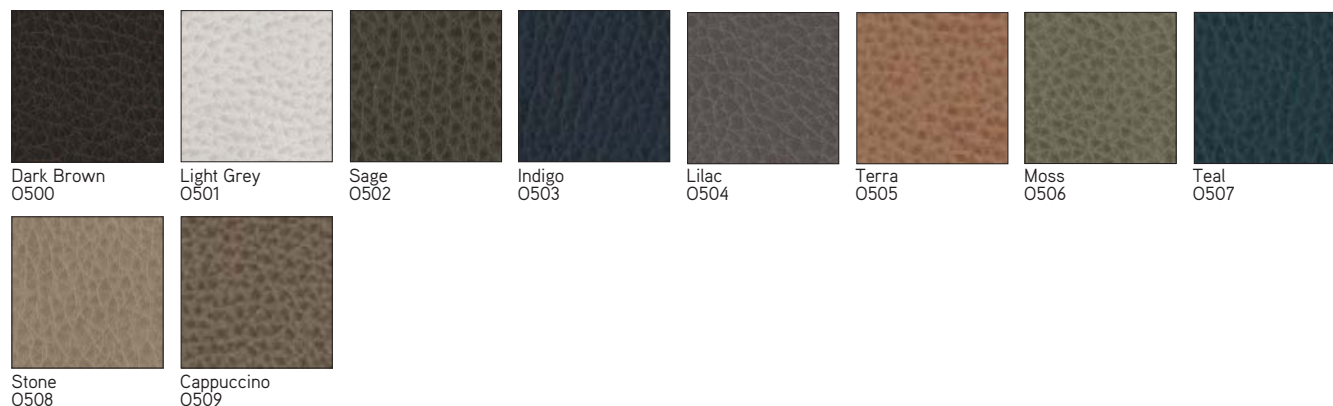
Note: Coalesse reserves the right to reject fabrics when necessary if the quality or construction is not satisfactory for intended use. For most up to date information on fabric usage please check the fabric database on www.coalesse.com.

► See Leather and Faux Leather Matrix for availability by product list, page 14.

Finesse



Ovation



Faux Leather Palette

Note: Coalesse reserves the right to reject fabrics when necessary if the quality or construction is not satisfactory for intended use. For most up to date information on fabric usage please check the fabric database on www.coalesse.com.

► See Leather and Faux Leather Matrix for availability by product list, page 14.

Panache



Surface Materials -
Leather/Faux

Prestige



Surface Materials - Wood

Wood

Standard Wood Finishes

Coalesse's primary wood finish, Clarity, is a water-borne UV topcoat, which protects the environment while providing exceptional durability and resistance to water and chemical stains. Contoured products, such as wood side chairs and occasional tables, are finished with post-catalyzed vinyl, which provides similar properties and matches the sheen and color of Clarity. Due to natural variations in wood, finished products may vary from samples in color, texture, and grain.

Wood will develop a deep, rich patina over time as the wood ages. Mineral streaks, gum pockets, and pin knots are some of the unique characteristics that are visible in veneers and solids.

All wood products will darken with age and exposure to ultraviolet light. This is especially apparent with cherry and maple veneer.

When storing your wood furniture, please follow the following guidelines:

- Do not store products in trailers
- Store products in areas that simulate office temperatures (60°F to 90°F)
- Store products in areas that maintain constant, office-like humidity levels
- Keep product away from light. Cover products to make sure they are not exposed to light.

Samples contact Customer Service at 1.800.627.6770

Steelcase Wood Finishes

Coalesse will match current Steelcase wood finishes at no upcharge. Finish matches are for color only and do not match the Steelcase finish in sheen. Samples will be provided upon request from Customer Service at 1.800.627.6770 and will be produced within 10 working days.

Steelcase Planked Veneers and Natural Veneers

Coalesse offers Steelcase Planked and Natural wood veneers in addition to the standard Steelcase veneer palette. These finishes have intentional and natural variations that include, but are not limited to: character marks, grain pattern, color, and natural color aging. Please note that these finishes may have additional lead times.

Stain-To-Match Wood Finish on cherry, maple, walnut, or oak

Coalesse will Stain-To-Match any wood finish at no upcharge. Samples submitted for matching must be at least 12" x 12" in surface dimension. Customers must specify cherry, maple, oak, or walnut species. Coalesse will produce a strike-off within 5 working days following acknowledgment of the order. Coalesse will not schedule the order for production until the strike-off has been approved and received by Coalesse.

Painted MDF

The painted medium density fiberboard (MDF) is utilizing molding grade MDF, therefore, the 45 lb density is consistent throughout the entire thickness of the board. This allows for a smooth edge when painted. Three coats of water reducible finish is applied to the board in a milk or black. The painted MDF has durability and care properties like a wood veneer, thus, must be treated as such.

Veneer Specifications Cherry

- American Black Cherry
- Flat cut, plain sliced/book matched
- Quarter cut/book matched
- Narrow cathedrals, mild grain, minimal pitch
- 5-10" wide leaves of 1/42" thick veneer, balanced on panel
- No gaps between leaves
- PB (particle board) core
- Low sheen 15 or high sheen 35

Maple

- Eastern Hard White Maple
- Flat cut, plain sliced/slip matched
- Quarter cut/book matched
- Narrow cathedrals, mild grain, minimal pitch
- 5-10" wide leaves of 1/42" thick veneer, balanced on panel
- No gaps between leaves
- PB (particle board) core
- Low sheen 15 or high sheen 35

Oak

- White Oak
- Rift cut
- Slip match
- Mild grain
- 4-8" wide leaves of 1/42" thick veneer, balanced on panel
- No gaps between leaves
- PB (particle board) core
- Low sheen 15 or high sheen 35

Walnut

- American Black Walnut
- Flat cut, plain sliced/book matched
- Quarter cut/book matched
- Narrow cathedrals, mild grain
- 5-10" wide leaves of 1/42" thick veneer, balanced on panel
- No gaps between leaves
- PB (particle board) core
- Low sheen 15 or high sheen 35

Exclusive (by product)

Teak

- Quarter cut/book match
- 15 sheen

Ash (Grey)

- Quarter cut/book match
- 15 sheen

Flat-cut – High Sheen

Grade 1

- V10C FC/HS Natural Cherry
- V11C FC/HS Clear Cherry
- V12C FC/HS Medium Amber Cherry
- V13C FC/HS Dark Cherry
- V10M FC/HS Clear Maple
- V11M FC/HS Natural Beech on Maple
- V12M FC/HS Medium Maple
- V10W FC/HS Natural Walnut
- V11W FC/HS Clear Walnut
- V12W FC/HS Medium Walnut
- V13W FC/HS Black Walnut
- V14W FC/HS Dark Walnut

Flat-cut – Low Sheen

Grade 1

- V1AC FC/LS Natural Cherry
- V1BC FC/LS Clear Cherry
- V1CC FC/LS Medium Amber Cherry
- V1DC FC/LS Dark Cherry
- V1AM FC/LS Clear Maple
- V1BM FC/LS Natural Beech on Maple
- V1CM FC/LS Medium Maple
- V1AW FC/LS Natural Walnut
- V1BW FC/LS Clear Walnut
- V1CW FC/LS Medium Walnut
- V1EW FC/LS Dark Walnut

Rift-cut – High Sheen

Grade 1

- V30K RC/HS Natural Oak
- V31K RC/HS Desert Oak
- V32K RC/HS Medium Brown Oak
- V33K RC/HS Medium Gray Oak
- V34K RC/HS Black Brown Oak

Rift-cut – Low Sheen

Grade 1

- V3AK RC/LS Natural Oak
- V3BK RC/LS Desert Oak
- V3CK RC/LS Medium Brown Oak
- V3DK RC/LS Medium Gray Oak
- V3EK RC/LS Black Brown Oak

Quarter-cut – High Sheen

Grade 2

- V20C QC/HS Natural Cherry
- V21C QC/HS Clear Cherry
- V22C QC/HS Medium Amber Cherry
- V23C QC/HS Dark Cherry
- V20M QC/HS Clear Maple
- V21M QC/HS Natural Beech on Maple
- V22M QC/HS Medium Maple
- V20W QC/HS Natural Walnut
- V21W QC/HS Clear Walnut
- V22W QC/HS Medium Walnut
- V23W QC/HS Black Walnut
- V24W QC/HS Dark Walnut

FC=Flat Cut
RC=Rift Cut
QC=Quarter Cut
WL=Wedge Lay-up
HS=High Sheen
LS=Low Sheen

Surface Materials - Wood

Tip: When specifying for hardwood chairs and occasional tables, select from Flat Cut or Rift Cut style numbers only.

Quarter-cut – Low Sheen

Grade 2

V2AA	QC/LS Ash Natural FSC
V2AC	QC/LS Natural Cherry
V2BC	QC/LS Clear Cherry
V2CC	QC/LS Medium Amber Cherry
V2DC	QC/LS Dark Cherry
V2AM	QC/LS Clear Maple
V2BM	QC/LS Natural Beech on Maple
V2CM	QC/LS Medium Maple
V2AW	QC/LS Natural Walnut
V2BW	QC/LS Clear Walnut
V2CW	QC/LS Medium Walnut
V2EW	QC/LS Dark Walnut
V2AT	QC/LS Teak Natural Raw FSC

Wedge Lay-up* – Flat cut – High Sheen

Grade 1

W10C	WC/FC/HS Natural (Raw) Cherry
W11C	WC/FC/HS Clear Cherry
W12C	WC/FC/HS Medium Amber Cherry
W13C	WC/FC/HS Dark Cherry
W10M	WC/FC/HS Clear Maple
W11M	WC/FC/HS Natural Beech on Maple
W12M	WC/FC/HS Medium Maple
W10W	WC/FC/HS Natural (Raw) Walnut
W11W	WC/FC/HS Clear Walnut
W12W	WC/FC/HS Medium Walnut
W13W	WC/FC/HS Black Walnut
W14W	WC/FC/HS Dark Walnut

Wedge Lay-up* – Flat cut – Low Sheen

Grade 1

W1AC	WC/FC/LS Natural (Raw) Cherry
W1BC	WC/FC/LS Clear Cherry
W1CC	WC/FC/LS Medium Amber Cherry
W1DC	WC/FC/LS Dark Cherry
W1AM	WC/FC/LS Clear Maple
W1BM	WC/FC/LS Natural Beech on Maple
W1CM	WC/FC/LS Medium Maple
W1AW	WC/FC/LS Natural (Raw) Walnut
W1BW	WC/FC/LS Clear Walnut
W1CW	WC/FC/LS Medium Walnut
W1EW	WC/FC/LS Dark Walnut

Wedge Lay-up* – Rift cut – High Sheen

Grade 1

W30K	WC/RC/HS Natural (Raw) Oak
W31K	WC/RC/HS Desert Oak
W32K	WC/RC/HS Medium Brown Oak
W33K	WC/RC/HS Medium Gray Oak
W34K	WC/RC/HS Black Brown Oak

Wedge Lay-up* – Rift cut – Low Sheen

Grade 1

W3AK	WC/RC/LS Natural (Raw) Oak
W3BK	WC/RC/LS Desert Oak
W3CK	WC/RC/LS Medium Brown Oak
W3DK	WC/RC/LS Medium Gray Oak
W3EK	WC/RC/LS Black Brown Oak

FC=Flat Cut
RC=Rift Cut
QC=Quarter Cut
WL=Wedge Lay-up
HS=High Sheen
LS=Low Sheen
OP=Open Pore

Wedge Lay-up* – Quarter cut – High Sheen

Grade 2

W20C	WC/QC/HS Natural (Raw) Cherry
W21C	WC/QC/HS Clear Cherry
W22C	WC/QC/HS Medium Amber Cherry
W23C	WC/QC/HS Dark Cherry
W20M	WC/QC/HS Clear Maple
W21M	WC/QC/HS Natural Beech on Maple
W22M	WC/QC/HS Medium Maple
W20W	WC/QC/HS Natural (Raw) Walnut
W21W	WC/QC/HS Clear Walnut
W22W	WC/QC/HS Medium Walnut
W23W	WC/QC/HS Black Walnut
W24W	WC/QC/HS Dark Walnut

Wedge Lay-up* – Quarter cut – Low Sheen

Grade 2

W2AC	WC/QC/LS Natural (Raw) Cherry
W2BC	WC/QC/LS Clear Cherry
W2CC	WC/QC/LS Medium Amber Cherry
W2DC	WC/QC/LS Dark Cherry
W2AM	WC/QC/LS Clear Maple
W2BM	WC/QC/LS Natural Beech on Maple
W2CM	WC/QC/LS Medium Maple
W2AW	WC/QC/LS Natural (Raw) Walnut
W2BW	WC/QC/LS Clear Walnut
W2CW	WC/QC/LS Medium Walnut
W2EW	WC/QC/LS Dark Walnut

*Available on select tables, refer to pricing pages in the Coalesse Specification Guides for availability.

Steelcase Veneers, Open Pore Only

Cherry, Flat Cut

3402	FC/OP Clear Cherry
3412	FC/OP Natural Cherry
3422	FC/OP Medium Cherry

Maple, Flat Cut

3522	FC/OP Clear Maple
3572	FC/OP Amber on Maple
3582	FC/OP Winter on Maple
3592	FC/OP Blonde on Maple

Maple, Quarter Cut

3222	QC/OP Clear Maple
3272	QC/OP Amber on Maple
3292	QC/OP Blonde on Maple

Walnut, Flat Cut

3062	FC/OP Graphite Walnut
3702	FC/OP Clear Walnut
3712	FC/OP Natural Walnut
3722	FC/OP Dark Mahogany on Walnut
3752	FC/OP Medium Walnut
3762	FC/OP Dark Walnut
3772	FC/OP Medium Mahogany on Walnut

Walnut, Quarter Cut

3302	QC/OP Clear Walnut
3312	QC/OP Natural Walnut
3322	QC/OP Dark Mahogany on Walnut
3352	QC/OP Medium Walnut
3362	QC/OP Dark Walnut
3372	QC/OP Medium Mahogany on Walnut
3382	QC/OP Graphite Walnut

Oak, Rift Cut

3602	RC/OP Desert Oak
3612	RC/OP Warm Oak
3692	RC/OP Espresso Oak

Natural Veneer

32A2	QC/OP Blanch Maple
33A2	QC/OP Thunder Walnut
35A2	FC/OP Blanch Maple
36A2	RC/OP Volcanic Oak
37A2	FC/OP Thunder Walnut

Planked Veneer

3P61	OP/ Planked Oak
3P71	OP/ Planked Walnut

Applies to: Carl Hansen and Son

3103	Oak/Walnut Oil
3105	Oak/Walnut Lacquer
3208	Azure Blue
3209	Light Blue
3210	Petrol Blue
3211	Spring Green
3213	Light Green
3216	Lime Green
3218	Mint Green
3219	Dark Purple
3220	Lavender Purple
3221	Light Purple
3223	Ivory White
3225	Oak Soap
3227	Oak Oil
3228	Anthracite Gray
3229	Red Brown
3233	Smoked Oak Oil
3235	Oak Black
3236	Olive Green
3237	Purple Blue
3238	Steel Blue
3239	Petrol Green
3246	Natural White
3247	Dark Blue
3248	Orange Red
3251	Berry Red
3253	Grass Green
3255	Oak Lacquer
3265	Oak White Oil
3267	Silver Gray
3268	Vanilla White
3269	Black
3325	Walnut Lacquer
3335	Walnut Oil
3407	Cherry Lacquer
3417	Cherry Oil
3603	Ash Soap
3605	Ash Oil
3615	Ash Lacquer
3645	Ash White Oil
3733	Beech Soap
3745	Beech Lacquer
3753	Beech Oil
3783	Smoked Oak Lacquer
3795	Ash Black

Painted MDF

Applies to: Exponents

V145	Milk
V197	Black

Hardwood Matrix

For Conference Chair Bases, Side Chairs, Occasional Tables, and Lounge Chairs

Legend

- = Not available
- = Available
- M = Stain color only on maple
- B = Stain color on Beech
- See specification pages in the Coalesse Specification Guides for details.

Seating

	Maple Flat Cut – High Sheen	Maple Flat Cut – Low Sheen	Maple Quarter Cut – High Sheen	Maple Quarter Cut – Low Sheen	Cherry Flat Cut – High Sheen	Cherry Flat Cut – Low Sheen	Cherry Quarter Cut – High Sheen	Cherry Quarter Cut – Low Sheen	Oak Rift Cut – High Sheen	Oak Rift Cut – Low Sheen	Walnut Flat Cut – High Sheen	Walnut Flat Cut – Low Sheen	Walnut Quarter Cut – High Sheen	Walnut Quarter Cut – Low Sheen	Teak Quarter Cut – High Sheen	Teak Quarter Cut – Low Sheen	Grey Ash – High Sheen	Grey Ash – Low Sheen	Edge Cut Veneers – Any Species	Transolid – Corian	Carl Hansen Exclusive Wood Finishes
Airport Lounge Chair CH401	•	•	•	•	•	•	•	•	•	•	•	•	•	•	•	•	•	•	•	•	■
Astor	■	■	•	•	M	M	•	•	•	M	M	M	•	•	•	•	•	•	•	•	•
Bix Podium Drawer Front	■	•	■	•	■	•	■	•	■	•	■	•	■	•	•	•	•	•	•	•	•
Circa	■	■	•	•	M	M	•	•	M	M	■	■	•	•	•	•	•	•	•	•	•
Coupe	■	■	•	•	M	M	•	•	M	M	■	■	•	•	•	•	•	•	•	•	•
Elbow Chair CH20	•	•	•	•	•	•	•	•	•	•	•	•	•	•	•	•	•	•	•	•	■
Enea	■	■	•	•	M	M	•	•	M	M	M	M	•	•	•	•	•	•	•	•	•
Kathryn	B	B	•	•	B	B	•	•	B	B	B	B	•	•	•	•	•	•	•	•	•
Ladderback Lounge Chair CH44	•	•	•	•	•	•	•	•	•	•	•	•	•	•	•	•	•	•	•	•	■
Paddle Lounge Chair CH25	•	•	•	•	•	•	•	•	•	•	•	•	•	•	•	•	•	•	•	•	■
Passerelle	■	■	•	•	M	M	•	•	M	M	M	M	•	•	•	•	•	•	•	•	•
Sidewalk	■	■	•	•	M	M	•	•	M	M	M	M	•	•	•	•	•	•	•	•	•
Swathmore	■	■	•	•	M	M	•	•	M	M	M	M	•	•	•	•	•	•	•	•	•
Swathmore Grande	■	■	•	•	M	M	•	•	M	M	M	M	•	•	•	•	•	•	•	•	•
Thoughtful	■	■	•	•	•	•	•	•	•	•	■	■	•	•	•	•	•	•	•	•	•
Shell Lounge Chair CH07	•	•	•	•	•	•	•	•	•	•	•	•	•	•	•	•	•	•	•	•	■
Wishbone Chair CH24	•	•	•	•	•	•	•	•	•	•	•	•	•	•	•	•	•	•	•	•	■
CH53 Stool	•	•	•	•	•	•	•	•	•	•	•	•	•	•	•	•	•	•	•	•	■
CH88 Chair	•	•	•	•	•	•	•	•	•	•	•	•	•	•	•	•	•	•	•	•	■

► Continued on next page

* Select colors only: V1AW Natural Walnut, V1EW Dark Walnut, V3AK Natural Oak, V3EK Black Brown Oak

Hardwood Matrix

For Conference Chair Bases, Side Chairs, Occasional Tables, and Lounge Chairs

►Continued from previous page

Legend

- = Not available
- = Available
- = Stain color only on maple
- See specification pages in the Coalesse Specification Guides for details.

	Maple Flat Cut – High Sheen	Maple Flat Cut – Low Sheen	Maple Quarter Cut – High Sheen	Maple Quarter Cut – Low Sheen	Cherry Flat Cut – High Sheen	Cherry Flat Cut – Low Sheen	Cherry Quarter Cut – High Sheen	Cherry Quarter Cut – Low Sheen	Oak Rift Cut – High Sheen	Oak Rift Cut – Low Sheen	Walnut Flat Cut – High Sheen	Walnut Flat Cut – Low Sheen	Walnut Quarter Cut – High Sheen	Walnut Quarter Cut – Low Sheen	Teak Quarter Cut – Low Sheen	Grey Ash – Low Sheen	Edge Cut Veneers – Any Species	Transolid – Corian	Carl Hansen Exclusive Wood Finishes
Occasional Tables																			
Avon	■	■	•	•	M	M	•	•	M	M	M	■	•	•	•	•	•	•	•
Bix Tables	■	■	■	■	■	■	■	■	■	■	■	■	■	■	•	•	•	•	•
CG_1	•	•	•	•	•	•	•	•	■	■	■	■	■	■	•	•	•	•	•
Dining Table CH327	•	•	•	•	•	•	•	•	•	•	•	•	•	•	•	•	•	•	■
Circa	■	■	•	•	M	M	•	•	M	M	■	■	•	•	•	•	•	•	•
Denizen Tablet	•	•	•	■	•	•	•	■	•	■	•	•	•	■	■	■	•	•	•
Diekman	■	■	•	•	M	M	•	•	M	M	M	M	•	•	•	•	•	•	•
Enea	■	■	•	•	M	M	•	•	M	M	M	M	•	•	•	•	•	•	•
Ginger	■	■	•	•	M	M	•	•	M	M	M	M	•	•	•	•	•	•	•
Holy Day	•	•	•	•	•	•	•	•	■	■	■	■	•	•	•	•	•	•	•
Passerelle	■	■	•	•	M	M	•	•	M	M	M	■	•	•	•	•	•	•	•
Sofa Occasional Tables CH008	•	•	•	•	•	•	•	•	•	•	•	•	•	•	•	•	•	•	■

Hardwood Stains Palette

For Conference Chair Bases, Side Chairs, Occasional Tables, and Lounge Chairs

► See Hardwood Matrix for availability by product list, page 24.

Tip: When specifying for hardwood chairs, lounge chairs, and occasional tables select from Flat Cut or Rift Cut finish numbers only.

High Sheen



Clear Maple
V10M



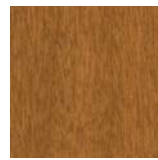
Natural Beech on
Maple
V11M



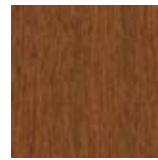
Medium Maple
V12M



Natural Cherry
V10C



Clear Cherry
V11C



Medium Amber
Cherry
V12C



Dark Cherry
V13C



Natural Walnut
V10W



Clear Walnut
V11W



Medium Walnut
V12W



Black Walnut
V13W



Dark Walnut
V14W

All stains on maple except:
Holy Day-stain on Oak and Walnut
Kathryn-stain on Beech
Circa-Maple, Cherry, and Oak on Maple; Walnut on
Walnut
Coupe-Maple, Cherry, and Oak on Maple; Walnut on
Walnut

Low Sheen



Clear Maple
V1AM



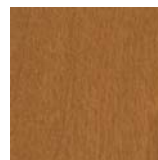
Natural Beech
on Maple
V1BM



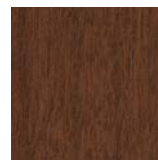
Medium Maple
V1CM



Natural Cherry
V1AC



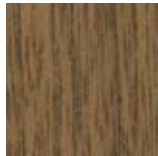
Clear Cherry
V1BC



Medium Amber
Cherry
V1CC



Dark Cherry
V1DC



Natural Walnut
V1AW



Clear Walnut
V1BW



Medium Walnut
V1CW



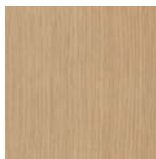
Dark Walnut
V1EW

All stains on maple except:
Holy Day-stain on Oak and Walnut
Kathryn-stain on Beech
Circa-Maple, Cherry, and Oak on Maple; Walnut on
Walnut
Coupe-Maple, Cherry, and Oak on Maple; Walnut on
Walnut

High Sheen



Natural Oak
V3OK



Desert Oak
V31K



Medium Brown Oak
V32K



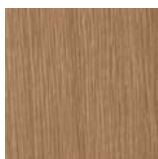
Medium Gray Oak
V33K



Black Brown Oak
V34K

All stains on maple except:
Holy Day-stain on Oak and Walnut
Kathryn-stain on Beech
Circa-Maple, Cherry, and Oak on Maple; Walnut on
Walnut
Coupe-Maple, Cherry, and Oak on Maple; Walnut on
Walnut

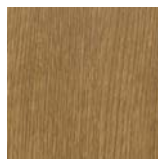
Low Sheen



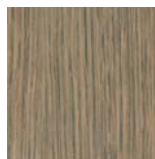
Natural Oak
V3AK



Desert Oak
V3BK



Medium Brown Oak
V3CK



Medium Gray Oak
V3DK



Black Brown Oak
V3EK

All stains on maple except:
Holy Day-stain on Oak and Walnut
Kathryn-stain on Beech
Circa-Maple, Cherry, and Oak on Maple; Walnut on
Walnut
Coupe-Maple, Cherry, and Oak on Maple; Walnut on
Walnut

► Continued on next page

Hardwood Stains Palette continued

For Conference Chair Bases, Side Chairs, Occasional Tables, and Lounge Chairs

► See Hardwood Matrix for availability by product list, page 24.

Tip: When specifying for hardwood chairs, lounge chairs, and occasional tables select from Flat Cut or Rift Cut finish numbers only.

Carl Hansen Wood



Surface Materials-
Wood

Veneer Matrix

For Conference and Multipurpose Tables, Storage, Casegoods, and Occasional Tables, and Montara650 Seating

Legend

- = Not available
- = Available
- ▣ = Stain color only
- ▶ See specification pages for details.

Note: This matrix includes both Coalesse and Steelcase veneers.

Tables and Casegoods

CG_1	•	•	•	•	•	•	•	•	■	■	■	■	■	■	•	•	•	•	•	•	•	•	■	■	
Denizen Casegoods	•	•	•	■	•	•	•	■	•	■	•	•	•	■	■	■	•	•	•	•	•	•	■	■	
Denizen Tables	•	•	•	■	•	•	•	■	•	■	•	•	•	■	■	■	•	■	•	•	•	•	■	■	
E-Tables 2	■	■	■	■	■	■	■	■	■	■	■	■	■	■	■	•	•	•	•	•	•	•	•	•	
Enea	■	■	•	•	▣	▣	•	•	▣	▣	▣	▣	▣	•	•	•	•	•	•	•	•	•	•	•	
Enea Lottus	■	■	•	•	▣	▣	•	•	■	■	■	■	■	■	■	•	•	•	•	•	•	•	•	•	
Exponents	■	■	■	■	■	■	■	■	■	■	■	■	■	■	■	•	•	•	■	•	•	■	■	•	•
Host Collection	■	■	■	■	■	■	■	■	■	■	■	■	■	■	■	•	•	•	•	•	•	•	•	•	
Lagunitas	■	■	■	■	■	■	■	■	■	■	■	■	■	■	■	•	•	•	•	•	•	•	■	■	
Montara650	■	■	■	■	■	■	■	■	■	■	■	■	■	■	■	•	•	•	•	•	•	•	■	■	
Potrero415	■	■	■	■	■	■	■	■	■	■	■	■	■	■	■	•	•	•	•	•	•	•	■	■	
Reunion Collection	■	■	■	■	■	■	■	■	■	■	■	■	■	■	■	•	•	•	•	•	•	•	■	■	
Sebastopol	•	•	•	•	•	•	•	•	■	■	■	■	■	■	■	•	•	•	•	•	•	•	■	■	
SW_1	■	■	■	■	■	■	■	■	■	■	■	■	■	■	■	•	•	•	■	•	•	•	■	■	
Trees	•	•	•	•	•	•	•	•	•	•	•	•	•	•	•	•	•	•	■	•	•	•	•	•	

Seating

Montara650*	•	•	•	•	•	•	•	•	•	■	•	•	•	•	•	•	•	•	•	•	•	•	•
-------------	---	---	---	---	---	---	---	---	---	---	---	---	---	---	---	---	---	---	---	---	---	---	---

* Select colors only: VP01, VP02, VP03, VP04, and VP05

Veneer Palette

For Conference and Multipurpose Tables, Storage, Caseworks, Occasional Tables, and Montara650 Seating

► See Veneer Matrix for availability by product list, page 28.

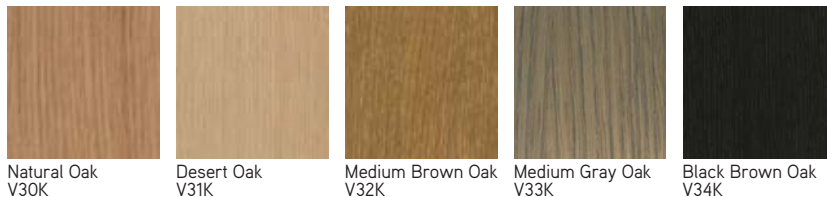
Flat Cut – High Sheen



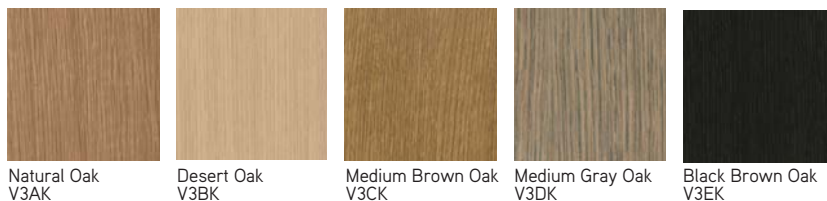
Flat Cut – Low Sheen



Rift Cut – High Sheen



Rift Cut – Low Sheen

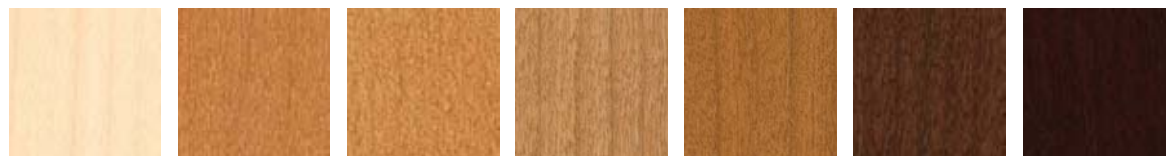


Veneer Palette continued

For Conference and Multipurpose Tables, Storage, Caseworks, Occasional Tables, and Montara650 Seating

► See Veneer Matrix for availability by product list, page 28.

Quarter Cut – High Sheen



Clear Maple
V20M

Natural Beech on
Maple
V21M

Medium Maple
V22M

Natural Cherry
V20C

Clear Cherry
V21C

Medium Amber
Cherry
V22C

Dark Cherry
V23C



Natural Walnut
V20W

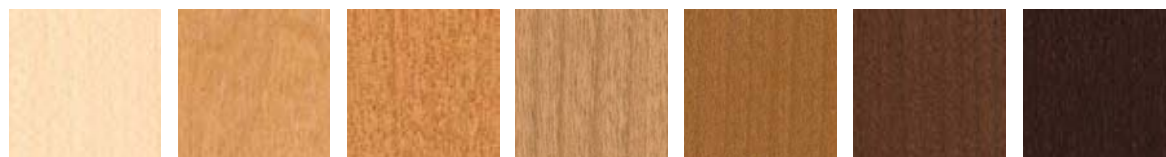
Clear Walnut
V21W

Medium Walnut
V22W

Dark Walnut
V24W

Black Walnut
V23W

Quarter Cut – Low Sheen



Clear Maple
V2AM

Natural Beech
on Maple
V21M

Medium Maple
V2CM

Natural Cherry
V2AC

Clear Cherry
V2BC

Medium Amber
Cherry
V2CC

Dark Cherry
V2DC



Natural Walnut
V2AW

Clear Walnut
V2BW

Medium Walnut
V2CW

Dark Walnut
V2EW

Veneer Palette

For Conference and Multipurpose Tables, Storage, Caseworks, Occasional Tables, and Montara650 Seating

► See Veneer Matrix for availability by product list, page 28.

Steelcase Veneers (open pore only)

Cherry - Flat Cut



Clear Cherry
3402



Natural Cherry
3412

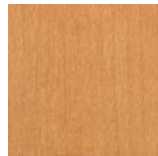


Medium Cherry
3422

Maple - Flat Cut



Clear Maple
3522



Amber on Maple
3572



Winter on Maple
3582



Blonde on Maple
3592

Maple - Quarter Cut



Clear Maple
3222



Amber on Maple
3272



Blonde on Maple
3292

Walnut - Flat Cut



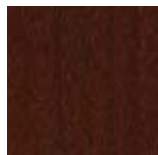
Graphite Walnut
3062



Clear Walnut
3702



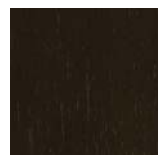
Natural Walnut
3712



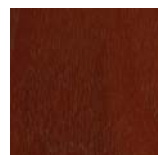
Dark Mahogany
on Walnut
3722



Medium Walnut
3752



Dark Walnut
3762



Medium Mahogany
on Walnut
3772

Walnut - Quarter Cut



Clear Walnut
3302



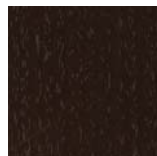
Natural Walnut
3312



Dark Mahogany
on Walnut
3322



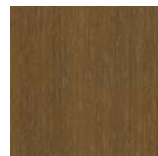
Medium Walnut
3352



Dark Walnut
3362



Medium Mahogany
on Walnut
3372



Graphite Walnut
3382



Desert Oak
3602



Warm Oak
3612



Espresso Oak
3692

Veneer Palette continued

For Conference and Multipurpose Tables, Storage, Casegoods, Occasional Tables, and Montara650 Seating

► See Veneer Matrix for availability by product list, page 28.

Steelcase Veneers (open pore only)

Oak – Rift Cut



Desert Oak
3602



Warm Oak
3612



Espresso
3692

Planked Veneer



Planked Oak
3P61



Planked Walnut
3P71

Natural Veneer



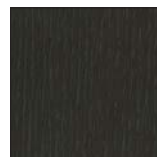
Quarter Cut Blanch
Maple
32A2



Quarter Cut Maple
33A2



Flat Cut Blanch
35A2

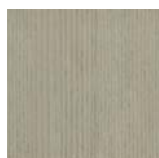


Rift Cut Volcanic
Oak
36A2*



Flat Cut Thunder
Walnut
37A2

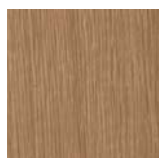
Denizen Wood



Quarter Cut Grey
Ash
V2AA



Quarter Cut Teak
V2AT

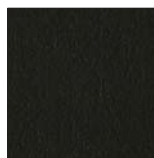


Rift Cut Oak
V3AK

Exponents Painted MDF



Milk
V145



Black
V197

Montara650 Tables and Seating



Light Oak
VP01



Smoked Oak
VP02



Black Oak*
VP03



Grey Oak
VP04



White Oak
VP05

Trees Embossed Wood



Medium Brown
EWMB



Natural
EWNT

*VP03 Black Oak is equivalent in color to Steelcase finish 36A2 Volcanic Oak.

Surface Materials -Laminate

Laminate

Coalesse's graded laminate program includes our standard laminates, Steelcase High-Pressure Laminates, and standard High-Pressure Laminates from Nevamar, Wilsonart, Formica, and Pionite.

Grade 1

Coalesse High-Pressure Laminates are priced as Grade 1.

High-Pressure Laminates listed below are not available on all products, check laminate matrix for availability.

2730	Arctic White
2746	Black
2826	White Nebula
2829	Poppyseed
2830	Charcoal
2884	Milk
2886	Maple
2887	Amber Cherry
2890	Folkstone BMW
2891	Ingot
2892	Ash
2894	Natural Cork
2895	Natural Walnut
2896	Dark Cork
2897	Desert Oak
2898	Satin Stainless

Grade 1

Steelcase High-Pressure Laminates are priced as Grade 1. All Steelcase High-Pressure Laminates may be specified on Coalesse products with exception (must be ordered as Special): Await tables, Enea tables, Enea Lottus tables, and Sidewalk tables. The use of Steelcase High-Pressure Laminate may be subject to extended lead times.

Fiber Laminate

2850	Vanadium Fiber
2851	Rhyme Fiber E
2852	Tungsten Fiber
2854	Vellum Fiber
2859	Novell Fiber
2860	Granite Fiber
2861	Coconut Fiber
2862	Stucco Fiber

Micro Laminate

2920	Marl Micro
2921	Gypsum Micro
2922	Clay Micro
2923	Shadow Micro E

Patina Laminate

2870	Blonde Bronze Patina
2871	Balckened Bronze Patina
2873	Instant Iron Patina

Solid Laminate

2722	Cream E
2730	Arctic White
2746	Black
2759	Warm White E
2811	Mist E
2883	Seagull
2884	Milk
2885	Dune
2HMG	Merle

Speckle Laminate

2820	Coffee Speckle
2822	Woodrose Speckle
2823	Driftwood Speckle
2824	Smoke Speckle
2825	Vanadium Speckle

Woodgrain Laminate

2406	Clear Cherry
2409	Clear Maple
2410	Graphite Walnut
2412	Natural Cherry
2422	Medium Cherry
2511	Winter on Maple
2538	Clear Walnut
2539	Warm Oak E
2592	Blonde on Maple
2714	Natural Walnut
2772	Medium Mahogany on Walnut E
2HAK	Clear Oak
2HAN	Ash Noce
2HAT	Acacia
2HAW	Ash Wenge
2HBN	Bisque Noce
2HBW	Bisque Wenge
2HCN	Clay Noce
2HCW	Clay Wenge
2HSN	Storm Noce
2HSW	Storm Wenge

Textured Woodgrain Laminate

2TH2	Fawn Cypress
2TH3	Weathered Char
2TH4	Saddle Oak
2TH5	Veranda Teak
2TH6	Persian Cherry
2TH7	Walnut Heights

turnstone Laminate Collection

A selection of laminates and edge bands are available on some Coalesse brand products. This collection is stocked and available with standard lead times and supported like standard laminates to help make ordering easy.

2535	Virginia Walnut
2536	Blackwood
2612	Marbled Maple
2614	Chocolate Walnut
2615	Marbled Cherry

Standard Laminates

Any current color within the following High-Pressure Laminate groups may be specified in grade 1 or 2 as indicated — subject to availability. **Contact Customer Service at 1.800.627.6770 to verify that your laminate selection falls within the categories noted below.**

Directional patterns and woodgrains may be used on freestanding systems products, but will not be patterned matched.

Some standard High-Pressure Laminates, may not be available in the appropriate size to produce large products.

Nevamar (Grade 2)
Solids (textured finish)
Patterns (textured finish)

Wilsonart (Grade 1)
Standards (matte finish)
Exceptions: High definition which must be quoted as a special. Marker board which is grade 2.

Formica (Grade 2)
Color portfolio (matte finish)
Patterns (matte finish)
Formations (matte finish)

Pionite (Grade 2)
Decorative surfaces (suede finish)

Non-Standard Laminates
Coalesse can supply additional laminates for an upcharge. Contact your Coalesse sales consultant for a custom quotation. Custom upcharges will vary based upon the cost of the material specified and additional labor required to manufacture the products. Some non-standard laminates will not be available in the appropriate size to produce large Coalesse products. A sample of the laminate may be requested for approval. Some non-standard laminates may be subject to extended lead times.

E = Established

High-Pressure Laminate Matrix

Legend

- = Not available
- = Available
- ▶ See specification pages for details.

Legend	Standard Coalesse High-Pressure Laminate																	Standard Steelcase High-Pressure Laminate									
<div><div>• = Not available</div><div>■ = Available</div><div>► See specification pages for details.</div></div>																											
Seating																											
Await	■	■	■	•	•	•	•	•	•	•	•	•	•	•	•	•	•	•	•	•	•	•	•	•	•		
Bix Podium Drawer Front	•	■	■	■	■	■	■	■	■	■	■	■	■	■	■	■	■	■	■	■	■	■	■	■	■		
Coupe	•	■	■	•	•	•	■	•	•	■	■	■	•	•	•	•	•	•	•	•	•	•	•	•	•		
Swathmore Grande	•	■	■	•	•	•	■	•	•	■	■	■	•	•	•	•	•	•	•	•	•	•	•	•	•		
Occasional Tables																											
Await	■	■	■	•	•	•	•	•	•	•	•	•	•	•	•	•	•	•	•	•	•	•	•	•	•		
Bix Tables	•	■	■	■	■	■	■	■	■	■	■	■	■	■	■	■	■	■	■	■	■	■	■	■	■		
CG_1	•	■	■	■	■	■	■	■	■	■	■	■	■	■	■	■	■	■	■	■	■	■	■	■	■		
Enea	•	■	■	■	■	■	■	■	■	■	■	■	■	■	■	■	■	■	■	■	■	■	■	■	■		
Enea Lottus	•	■	■	■	■	■	■	■	■	■	■	■	■	■	■	■	■	■	■	■	■	■	■	■	■		
Lagunitas	•	■	■	■	■	■	■	■	■	■	■	■	■	■	■	■	■	■	■	■	■	■	■	■	■		
Montara650	•	■	■	■	■	■	■	■	■	■	■	■	■	■	■	■	■	■	■	■	■	■	■	■	■		
Sidewalk	•	■	■	■	■	■	■	■	■	■	■	■	■	■	■	■	■	■	■	■	■	■	■	■	■		
SW_1	•	■	■	■	■	■	■	■	■	■	■	■	■	■	■	■	■	■	■	■	■	■	■	■	■		
Swathmore	•	■	■	•	•	•	■	•	•	■	■	■	•	•	•	•	•	•	•	•	•	•	•	•	•		
Swathmore Grande	•	■	■	•	•	•	■	•	•	■	■	■	•	•	•	•	•	•	•	•	•	•	•	•	•		
Tables and Casegoods																											
Au Lait	•	■	■	■	■	■	■	■	■	■	■	■	■	■	■	■	■	■	■	■	■	■	■	■	■		
Ballet	•	■	■	■	■	■	■	■	■	■	■	■	■	■	■	■	■	■	■	■	■	■	■	■	■		
E-Table 2	•	■	■	■	■	■	■	■	■	■	■	■	■	■	■	■	■	■	■	■	■	■	■	■	■		
Enea	•	■	■	■	■	■	■	■	■	■	■	■	■	■	■	■	■	■	■	■	■	■	■	■	■		
Enea Lottus	•	■	■	■	■	■	■	■	■	■	■	■	■	■	■	■	■	■	■	■	■	■	■	■	■		
Host Collection	•	■	■	■	■	■	■	■	■	■	■	■	■	■	■	■	■	■	■	■	■	■	■	■	■		
Potrero415	•	■	■	■	■	■	■	■	■	■	■	■	■	■	■	■	■	■	■	■	■	■	■	■	■		
Reunion Collection	•	■	■	■	■	■	■	■	■	■	■	■	■	■	■	■	■	■	■	■	■	■	■	■	■		
SW_1	•	■	■	■	■	■	■	■	■	■	■	■	■	■	■	■	■	■	■	■	■	■	■	■	■		
Train	•	■	■	■	■	■	■	■	■	■	■	■	■	■	■	■	■	■	■	■	■	■	■	■	■		

Surface Materials-Laminate

• = Not available
 ■ = Available
 ► See specification pages for details.

36

High-Pressure Laminate Palette

► See High-Pressure Laminate Matrix for availability by product list, page 34.

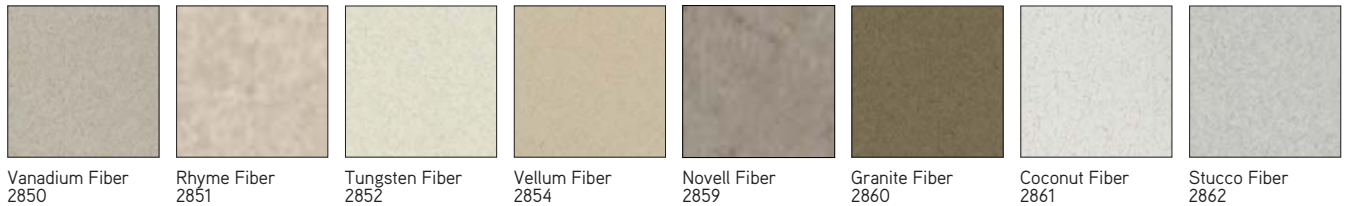
Standard Coalesse High-Pressure Laminate



*Available on Await only.

Standard Steelcase High-Pressure Laminate

Fiber Laminate



Micro Laminate



Speckle Laminate



High-Pressure Laminate Palette *continued*

► See High-Pressure Laminate Matrix for availability by product list, page 34.

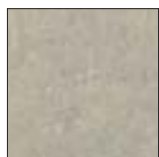
Standard Steelcase High-Pressure Laminate, continued

Metallic Laminate



Brushed Silver
2503

Patina Laminate



Blonde Bronze
Patina
2870



Blackened Bronze
Patina
2871



Instant Iron Patina
2873

Solid Laminate



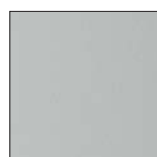
Cream
2722



Warm White
2759



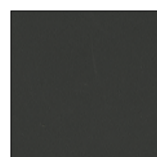
Mist
2811



Seagull
2883



Dune
2885



Merle
2HMG

Woodgrain Laminate



Clear Cherry
2406



Clear Maple
2409



Graphite Walnut
2410



Natural Cherry
2412



Medium Cherry
2422



Winter on Maple
2511



Clear Walnut
2538



Warm Oak
2539



Blonde on Maple
2592



Natural Walnut
2714



Medium Mahogany
on Walnut
2772



Clear Oak
2HAK



Ash Noce
2HAN



Acacia
2HAT



Ash Wenge
2HAW



Bisque Noce
2HBN



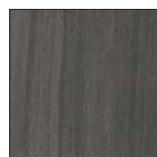
Bisque Wenge
2HBW



Clay Noce
2HCN



Clay Wenge
2HCW



Storm Noce
2HSN



Storm Wenge
2HSW

High-Pressure Laminate Palette *continued*

► See High-Pressure Laminate Matrix for availability by product list, page 34.

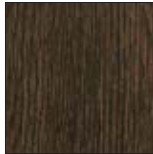
Steelcase Textured Woodgrain Laminate



Fawn Cypress
2TH2



Weathered Char
2TH3



Saddle Oak
2TH4



Veranda Teak
2TH5



Persian Cherry
2TH6



Walnut Heights
2TH7

Standard turnstone High-Pressure Laminate



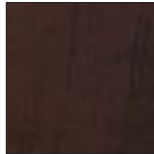
Virginia Walnut
2535



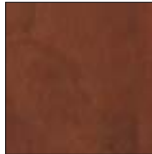
Blackwood
2536



Marbled Maple
2612



Chocolate Walnut
2614



Marbled Cherry
2615

• = Not available
 ■ = Available
 ► See specification pages for details.

[illegible][illegible][illegible]

Note: Self-edge edge bands match the laminate specified.

Surface Materials-Laminate

Recommended Worksurface 3 mm Edge Finishes

For Bix, E-Table2, Lagunitas, Montara650, Potrero415, and SW_1

Recommended Edge Colors—Coalesse and Steelcase High-Pressure Laminate

Edges

The recommended edge color will complement the laminate color you specify. Edge color is specified separately

Laminate Color	Recommended 3 mm Edge Color
Solid Laminate	
Coalesse:	
2830 Charcoal	6000 Black
2890 Folkstone	6086 Folkstone
2891 Ingot	6012 Ingot
2892 Ash	6011 Ash
Solid Laminate	
Steelcase:	
2722 Cream E	6631 Cream
2730 Arctic White	6009 Arctic White
2746 Black	6000 Black
2759 Warm White E	6655 Warm White
2811 Mist E	6636 Mist
2883 Seagull	6053 Seagull
2884 Milk	6052 Milk
2885 Dune	6654 Sand
2HMG Merle	6527 Merle
Pattern Laminate	
Coalesse:	
2826 White Nebula	6635 Dawn
2829 Poppyseed	6249 Platinum Solid
2894 Natural Cork	6126 Greige
2896 Dark Cork	6001 Coffee
2898 Satin Stainless	6093 Dove Grey
Woodgrain Laminate	
Coalesse:	
2886 Maple	6091 Fusion Maple
2887 Amber Cherry	6090 Amber Cherry
2895 Natural Walnut	6012 Ingot
2897 Desert Oak	6128 Taupe
Woodgrain Laminate	
Steelcase:	
2406 Clear Cherry	6234 Clear Cherry
2409 Clear Maple	6237 Clear Maple
2410 Graphite Walnut	6231 Graphite Walnut
2412 Natural Cherry	6034 Natural Cherry
2422 Medium Cherry	6036 Medium Cherry
2511 Winter on Maple	6037 Winter on Maple
2538 Clear Walnut	6245 Clear Walnut
2539 Warm Oak E	6246 Warm Oak E
2592 Blonde on Maple	6038 Blonde on Maple
2714 Natural Walnut	6041 Natural Walnut
2772 Medium Mahogany on Walnut E	6045 Medium Mahogany on Walnut E
2HAK Clear Oak	6219 Clear Oak
2HAN Ash Noce	6707 Ash Noce
2HAT Acacia	6213 Acacia
2HAW Ash Wenge	6703 Ash Wenge
2HBN Bisque Noce	6708 Bisque Noce
2HBW Bisque Wenge	6705 Bisque Wenge
2HCN Clay Noce	6709 Clay Noce
2HCW Clay Wenge	6706 Clay Wenge
2HSN Storm Noce	6710 Storm Noce
2HSW Storm Wenge	6704 Storm Wenge

► Recommended Worksurface 3 mm Edge Finishes, continued on next page

E = Established

Recommended Worksurface 3 mm Edge Finishes

For Bix, E-Table2, Lagunitas, Montara650, Potrero415, and SW_1

Recommended Edge Colors—Coalesse and Steelcase High-Pressure Laminate, continued

Edges

The recommended edge color will complement the laminate color you specify. Edge color is specified separately

Laminate Color	Recommended 3 mm Edge Color
Fiber Laminate	
Steelcase:	
2850 Vanadium Fiber	6654 Sand
2851 Rhyme Fiber E	6631 Cream
2852 Tungsten Fiber	6636 Mist
2854 Vellum Fiber	6655 Warm White
2859 Novell Fiber	6001 Coffee
2860 Granite Fiber	6000 Black
2861 Coconut Fiber	6654 Sand
2862 Stucco Fiber	6053 Seagull
Micro Laminate	
Steelcase:	
2920 Marl Micro	6053 Seagull
2921 Gypsum Micro	6654 Sand
2922 Clay Micro	6654 Sand
2923 Shadow Micro E	6249 Platinum Solid
Patina Laminate	
Steelcase:	
2870 Blonde Bronze Patina	6654 Sand
2871 Blackened Bronze Patina	6615 Grey V5
2873 Instant Iron Patina	6615 Grey V5
Speckle Laminate	
Steelcase:	
2820 Coffee Speckle	6631 Cream
2822 Woodrose Speckle E	6635 Dawn E
2823 Driftwood Speckle	6631 Cream
2824 Smoke Speckle	6636 Mist
2825 Vanadium Speckle	6619 Ice E
Textured Woodgrain Laminate	
Steelcase:	
2TH2 Fawn Cypress	6T02 Fawn Cypress
2TH3 Weathered Char	6T03 Weathered Char
2TH4 Saddle Oak	6T04 Saddle Oak
2TH5 Veranda Teak	6T05 Veranda Teak
2TH6 Persian Cherry	6T06 Persian Cherry
2TH7 Walnut Heights	6T07 Walnut Heights
turnstone Laminate Collection*	
2535 Virginia Walnut	6242 Virginia Walnut
2536 Blackwood	6243 Blackwood
2612 Marbled Maple	6676 Marbled Maple
2614 Chocolate Walnut	6677 Chocolate Walnut
2615 Marbled Cherry	6678 Marbled Cherry

*A selection of laminates and edge bands are available on some Coalesse brand products. This collection is stocked and available with standard leadtimes and supported like standard laminates to help make ordering easy.

E = Established

Surface Materials - Glass

Glass

Not all glass selections are available on every product. Refer to glass matrix for availability by product.

CG	Clear Green
CGF	Clear Green Laminated/Frosted Appearance
AC	Absolute Clear
ACF	Absolute Clear Frosted
ACM	Absolute Clear with Moonlight
ACS	Absolute Clear with Sage
ACP	Absolute Clear with Poppy
ACG	Absolute Clear with Goldenrod
ACB	Absolute Clear with Black
ACC	Absolute Clear with Crystal Spring

Exclusive to Carl Hansen products:

6513 Clear Glass

Exclusive to Emu products:

6547 Transparent

6548 Smoke Grey

Glass Matrix

Legend

- = Not available
- = Available
- See specification pages for details.

	AC Absolute Clear	ACF Absolute Clear Frosted	CG Clear Green	CGF Clear Green Laminated/Frosted Appearance	ACM Absolute Clear with Moonlight	ACS Absolute Clear with Sage	ACC Absolute Clear with Crystal Spring	ACG Absolute Clear with Goldenrod	ACP Absolute Clear with Poppy	ACB Absolute Clear with Black	Emu Exclusive Transparent	Emu Exclusive Smoke	Carl Hansen Exclusive Glass	Standard Clear Glass / Green Tinted / White Enamel Bottom	Green Tinted
Occasional Tables															
Await***	■	■	■	■	■	■	■	■	■	■	•	•	•	•	•
Bob	■	■	■	■	■	■	■	■	■	■	•	•	•	•	•
CG_1	•	•	•	•	■	■	■	■	■	■	•	•	•	•	•
Circa	•	•	•	•	•	•	•	•	•	•	•	•	•	■	•
Diekman	■	•	•	•	•	•	•	•	•	•	•	•	•	•	•
Ginger**	•	•	•	•	•	•	•	•	•	•	•	•	•	■	•
Glass Coffee Table CH100 Series	•	•	•	•	•	•	•	•	•	•	•	•	■	•	•
Emu Heaven	•	•	•	•	•	•	•	•	•	•	■	■	•	•	•
Holy Day	■	■	■	■	■	■	■	■	■	■	•	•	•	•	•
Millbrae	■	■	■	■	■	■	■	■	■	■	•	•	•	•	•
Sidewalk*	•	•	•	■	•	•	•	•	•	•	•	•	•	•	•
Soft Leaf	■	•	•	•	•	•	•	•	•	•	•	•	•	•	•
SW_1***	•	•	•	•	■	■	■	■	■	■	•	•	•	•	•
Swathmore**	•	•	•	■	•	•	•	•	•	•	•	•	•	•	•
Switch	•	•	•	•	•	•	•	•	•	•	•	•	•	•	■
Conference Tables/Office/Storage															
Denizen	•	•	•	•	■	•	•	•	•	•	•	•	•	•	•
Exponents (Credenzas)***	•	•	•	•	■	■	■	■	■	■	•	•	•	•	•
SW_1***	•	•	•	•	■	■	■	■	■	■	•	•	•	•	•
Potrero415***	•	•	•	•	■	■	■	■	■	■	•	•	•	•	•

*3/16" thick glass

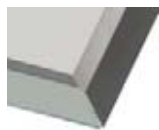
**3/4" thick glass

***1/2" thick glass

Glass Palette

► See Glass Matrix for availability by product list, page 45.

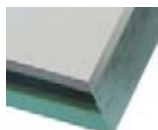
Glass



Absolute Clear
AC



Absolute Clear
Frosted
ACF



Clear Green
CG



Clear Green
Laminated - Frosted
Appearance CGF



Moonlight
ACM



Goldenrod
ACG



Sage
ACS



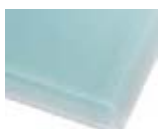
Black
ACB



Poppy
ACP



Crystal Spring
ACC



Green Tinted- White
Enamel Bottom



Green Tinted

Exponents, Potrero415, and SW_1 Glass



Moonlight
ACM



Sage
ACS



Crystal Spring
ACC



Goldenrod
ACG



Poppy
ACP



Black
ACB

Surface Materials- Metal/Paint

Metal/Paint

Coalesse powder coats all painted metal components for an exceptionally durable, environmentally responsible finish — eliminating VOC's (volatile organic compounds) from being released into the environment. Electrostatically charged powder coat material is applied to an exacting thickness and then temperature baked, resulting in a smooth, flawless finish that is abrasion and impact resistant. The following Coalesse metal finishes are available:

Powder Coat paint	
4138	Graphite Gloss
4140	Arctic White Gloss
4141	Platinum Matte
4142	Platinum Gloss
4144	Black Gloss (formerly anthracite gloss)
4145	Milk Gloss
4146	Champagne Matte
4147	Champagne Gloss
4148	Midnight Brown Gloss
4180	Graphite Matte
4193	Midnight Brown Matte
4242	Milk Matte
4710	Low Gloss Black
7196	Midnight Brown Textured
7197	Anthracite Textured

Exclusive to Emu Advanced Collection*:

4251	Emu Indian Brown
4256	Aluminum
4257	Antique Iron
7234	Emu Black
7271	Emu White
7272	Blue
7273	Green
7294	Emu Grey/Green
7295	Emu Mint Green
7296	Emu Taupe
7297	Emu Corten
7298	Emu Copper
7391	Emu Poppy

* Not all colors available on all products, consult Emu advanced paint matrix.

Enea paint colors:	
4018	Silver Metallic
4016	White Gloss
4017	Black Gloss

Enea Lottus Paint colors:	
4016	White Gloss
4017	Black Gloss
4216	Red
4217	Brown
4218	Platinum Silver

Tip: 4216 Red not available on Enea Lottus tables.

Anodized Aluminum	
(Available on rod or disc pulls only)	
5200	Satin Aluminum

Applies to: Potrero415 Legs	
8046	Polished Aluminum

Applies to: Potrero415 Leg Rings	
---	--

9201	Chrome
9260	Black Chrome
9261	Copper

Paint

Applies to: Denizen Collection	
---------------------------------------	--

4138	Graphite Gloss
4142	Platinum Gloss
4144	Black Gloss
4145	Milk Gloss
4147	Champagne Gloss
9238	Brushed Nickel

Applies to: Exponents (Base, Accent Ribbon, Handle, and Grommet)	
---	--

4135	Black Matte
4141	Platinum Matte

Applies to: Exponents mobile displays (Base, Handle, and Inner Frame)	
--	--

4135	Black Matte
4145	Milk Gloss

Base Finish

Polished Aluminum

8046	Polished Aluminum
------	-------------------

Chrome

9201	Chrome
9207	Polished trivalent chrome
9208	Etched trivalent chrome

Applies to: Bob and SW_1	
8040	Aluminum Matte Polished

Exclusive Carl Hansen

4860	Black Powder Coat*
4861	Chrome*
4862	Stainless Steel

* Only available on CH88 and CH88P

Smooth Paint

Applies to: LessThanFive	
---------------------------------	--

4234	Blue Matte
4235	Light Fade Matte
4236	Dark Fade Matte
4237	Red Fade Gloss
4805	Copper Gloss

Woven Carbon Fiber

Applies to: LessThanFive	
---------------------------------	--

4233	Carbon Weave*
* 4233 Carbon Weave has a clear coat finish over woven carbon fiber.	

Coating

Steelcase Lux Coatings

Applies to: CG_1, Lagunitas Tables, Montara650 Seating, Montara650 Tables	
--	--

4B20	Obsidian
4B22	Matte Brass
4B23	Burnished Bronze
4B24	Night Bronze
4B25	Matte Copper

Tip: Lux Coatings are metallic powder coat paints with a clear coat polyurethane layer applied over the base powder. The metallic flake presents itself differently at different points on a surface; therefore, different surface shapes and sizes may slightly alter the aesthetic. Slight variability is to be expected.

Metal/Paints Matrix

Legend

- = Not available
- = Available
- See specification pages for details.

Seating

Coalesse Metals/Paints	4135 Black Matte	4138 Graphite Gloss	4140 Arctic White Gloss	4141 Platinum Matte	4142 Platinum Gloss	4144 Black Gloss	4145 Milk Gloss	4146 Champagne Matte	4147 Champagne Gloss	4148 Midnight Brown Gloss	4180 Graphite Matte	4193 Midnight Brown Matte	4242 Milk Matte	4710 Low Gloss Black	7196 Midnight Brown Textured	7197 Anthracite Textured	Enea Exclusive Finishes	Gunmetal	Silver Gloss	8046 Polished Aluminum	9201 Chrome	9260 Black Chrome	9261 Copper
Bindu Side	•	•	•	•	•	■	•	•	•	•	•	•	•	•	•	•	•	•	•	•	•	•	•
Bix	•	■	■	■	■	■	■	■	■	■	•	•	•	•	■	■	•	•	•	•	•	•	•
Chord	•	•	•	•	•	■	•	•	•	•	•	•	•	•	•	•	•	•	•	•	•	•	•
Circa	•	■	■	•	•	■	•	•	•	•	•	•	•	•	•	•	•	■	■	•	•	•	•
Coupe	•	■	■	•	■	■	•	•	•	■	•	•	•	•	•	•	•	•	•	•	•	•	•
Enea	•	•	•	•	•	•	•	•	•	•	•	•	•	•	•	•	■	•	•	•	•	•	•
Enea Lottus	•	•	•	•	•	•	•	•	•	•	•	•	•	•	•	•	■	•	•	•	•	•	•
Evaneau	•	•	•	•	•	■	•	•	•	•	•	•	•	•	•	•	•	•	•	•	•	•	•
Lagunitas	•	■	■	■	■	■	■	■	■	•	■	■	■	■	■	■	•	•	•	•	•	•	•
Massaud	•	•	•	■	•	•	•	■	•	•	■	■	■	■	•	•	•	•	•	•	•	•	•
Millbrae	•	■	•	■	•	■	■	•	•	■	■	■	■	■	•	•	•	•	•	•	•	•	•
Montara650	•	■	•	■	•	■	■	■	•	■	■	■	■	■	•	•	•	•	•	■	•	•	•
Topo Lounge	•	■	■	■	■	■	■	■	■	■	•	•	•	•	■	■	•	•	•	•	•	•	•
Visalia	•	■	•	■	•	■	■	•	•	■	■	■	■	■	•	•	•	•	•	•	•	•	•

Occasional Tables

Coalesse Metals/Paints	4135 Black Matte	4138 Graphite Gloss	4140 Arctic White Gloss	4141 Platinum Matte	4142 Platinum Gloss	4144 Black Gloss	4145 Milk Gloss	4146 Champagne Matte	4147 Champagne Gloss	4148 Midnight Brown Gloss	4180 Graphite Matte	4193 Midnight Brown Matte	4242 Milk Matte	4710 Low Gloss Black	7196 Midnight Brown Textured	7197 Anthracite Textured	Enea Exclusive Finishes	Gunmetal	Silver Gloss	8046 Polished Aluminum	9201 Chrome	9260 Black Chrome	9261 Copper
Bix (vinyl version)	•	■	■	■	■	■	■	■	■	■	•	•	•	•	■	■	•	•	•	•	•	•	•
Circa	•	■	■	•	■	■	•	•	•	■	•	•	•	•	•	•	•	■	■	•	•	•	•
Enea	•	•	•	•	•	•	•	•	•	•	•	•	•	•	•	•	■	•	•	•	•	•	•
Lagunitas	•	■	■	■	■	■	■	■	■	■	■	■	■	■	■	■	•	•	•	•	•	•	•
Montara650	•	■	•	■	•	■	■	■	•	■	■	■	■	■	•	•	•	•	•	•	•	•	•

Tables and Casegoods

Coalesse Metals/Paints	4135 Black Matte	4138 Graphite Gloss	4140 Arctic White Gloss	4141 Platinum Matte	4142 Platinum Gloss	4144 Black Gloss	4145 Milk Gloss	4146 Champagne Matte	4147 Champagne Gloss	4148 Midnight Brown Gloss	4180 Graphite Matte	4193 Midnight Brown Matte	4242 Milk Matte	4710 Low Gloss Black	7196 Midnight Brown Textured	7197 Anthracite Textured	Enea Exclusive Finishes	Gunmetal	Silver Gloss	8046 Polished Aluminum	9201 Chrome	9260 Black Chrome	9261 Copper
Au Lait	•	•	•	•	•	•	•	•	•	•	•	•	•	•	■	■	•	•	•	•	•	•	•
Ballet	•	■	■	■	■	■	■	■	■	■	•	•	•	•	■	■	•	•	•	•	•	•	•
Bix	•	•	•	•	•	•	•	•	•	•	•	•	•	•	■	■	•	•	•	•	•	•	•
CG_1	•	•	•	■	•	•	•	•	•	•	■	■	■	■	•	•	•	•	•	•	•	•	•
Denizen	•	■	•	•	■	■	■	•	■	•	•	•	•	•	•	•	•	•	•	•	•	•	•
E-Table 2	•	■	■	■	■	■	■	■	■	■	•	•	•	•	■	■	•	•	•	•	•	•	•
Enea	•	•	•	•	•	•	•	•	•	•	•	•	•	•	•	•	■	•	•	•	•	•	•
Enea Lottus	•	•	•	•	•	•	•	•	•	•	•	•	•	•	•	•	■	•	•	•	•	•	•
Exponents	■	•	•	■	•	•	•	•	•	•	•	•	•	•	•	•	•	•	•	•	•	•	•
Exponents Mobile Display	■	•	•	•	•	■	•	•	•	•	•	•	•	•	•	•	•	•	•	•	•	•	•
Millbrae	•	■	•	■	•	■	■	•	■	■	■	■	■	■	•	•	•	•	•	•	•	•	•
Potrero415	•	■	•	•	■	■	■	•	■	■	■	■	■	■	•	•	•	•	■	■	■	■	■
Reunion Collection	•	■	■	■	■	■	■	■	■	■	•	•	•	•	■	■	•	•	•	•	•	•	•
Train	•	■	■	■	■	■	■	■	■	■	•	•	•	•	■	■	•	•	•	•	•	•	•

*Lux Coatings are not available on Montara650 54" or 60" round work-height tables.

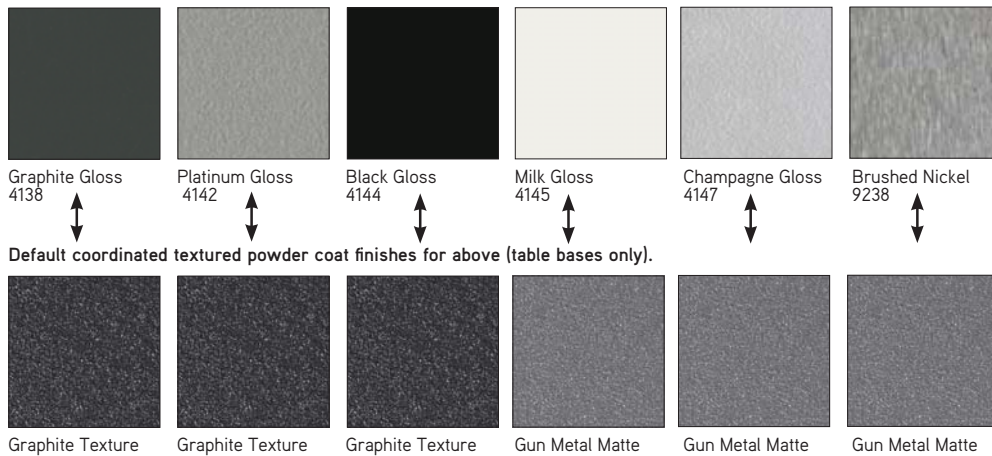
Metal/Paints Palette

► See Metal/Paints Matrix for availability by product list, page 48.

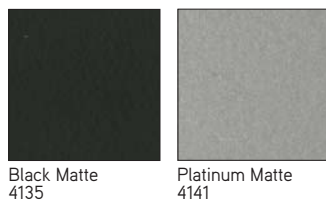
Metal/Paint Colors



Denizen Paint Colors - Standard specifiable powder coat options



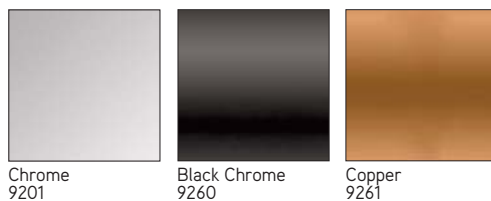
Exponents Paint Colors



Exponents Mobile Display Paint Colors



Potrero415 Metal Color



Metal/Paints Palette continued

► See Metal/Paints Matrix for availability by product list, page 48.

Montara650 and CG_1 Steelcase Lux Coatings



Obsidian
4B20



Matte Brass
4B22



Burnished Bronze
4B23



Night Bronze
4B24

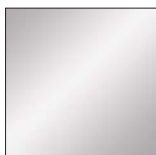


Matte Copper
4B25

Carl Hansen Exclusive



Black Powder Coat
4860

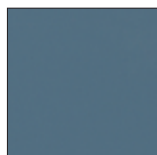


Chrome
4861



Stainless Steel
4862

LessThanFive Smooth Paint



Blue Matte
4234



Light Fade Matte
4235



Dark Fade Matte
4236

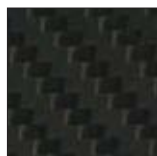


Red Fade Gloss
4237



Copper Gloss
4805

LessThanFive Woven Carbon Fiber



Carbon Weave
4233*

* 4233 Carbon Weave has a clear coat finish over woven carbon fiber.

Emu Advanced Collection Paint Matrix

Legend

- = Not available
- = Available
- See specification pages for details.

	Heaven Seating, Tables, and Pouf	Heaven Vases	Ivy Collection	Pattern Collection	Retrouvé Collection	Round Collection	Kira Tables	Terramare Collection	Lyze Collection
4251 Emu Indian Brown	•	•	•	•	•	■	•	■	•
4256 Aluminum	■	•	•	•	•	•	•	•	•
4257 Antique Iron	•	•	•	•	•	■	•	•	•
7234 Emu Black	•	•	•	■	•	■	■	■	■
7271 Emu White	■	■	■	■	■	■	■	■	■
7272 Blue	•	•	•	■	•	•	•	•	•
7273 Green	•	•	•	■	•	•	•	•	•
7294 Emu Grey/Green	•	•	•	•	•	•	■	■	■
7295 Emu Mint Green	•	•	•	•	•	•	■	•	■
7296 Emu Taupe	•	•	•	•	•	•	•	•	■
7297 Emu Corten	•	•	•	•	•	•	•	■	•
7298 Emu Copper	•	•	•	•	•	•	•	•	■
7391 Emu Poppy	•	•	•	■	•	•	•	•	■

Tip: Not all paints are standard on all products. For paints listed above that are not standard on a particular product line, contact Coalesse Specials for quoting. Extended lead times will apply.

Emu Paint Palette

► See Emu Advanced Collection Paint Matrix for availability by product list, page 51.

Emu Collection



Surface Materials - Miscellaneous

Convex Vinyl Edge Band

Applies to:

- Au Lait (includes cast urethane) and E-Table vinyl
- | | |
|------|------------|
| 6000 | Black |
| 6607 | Woodrose |
| 6609 | Smoke |
| 6655 | Warm White |

Cast Urethane Edge

Applies to:

- Au Lait
- | | |
|------|------------|
| 6000 | Black |
| 6607 | Woodrose |
| 6609 | Smoke |
| 6655 | Warm White |

Fiber Cement

Applies to:

- Emu Lyze Collection
- | | |
|------|------------|
| FC01 | White/Grey |
|------|------------|

Porcelain Stoneware

Applies to:

- Emu Kira and Terramare Tables
- | | |
|------|-----------------|
| ST01 | Basaltina |
| ST02 | Statuario White |
| ST03 | Emperador |
| ST04 | Fokos Rena |
| ST05 | Savoia Grey |

Plastic

Applies to:

- Enea Shell
- | | |
|------|-----------------|
| 0003 | White |
| 0013 | Sunset Orange |
| 0014 | Clover Green |
| 0015 | Sand |
| 0016 | Walnut Brown |
| 0017 | Cool Grey |
| 0414 | Anthracite Grey |
| 0421 | Blue |
| 400 | Black |
| 405 | Periwinkle |
| 406 | Alabaster |
| 409 | Red |

Applies to:

- Enea Lottus Shell and Insert
- | | |
|------|-----------------|
| 0003 | White |
| 0013 | Sunset Orange |
| 0014 | Clover Green |
| 0015 | Sand |
| 0016 | Walnut Brown |
| 0017 | Cool Grey |
| 0414 | Anthracite Grey |
| 0421 | Blue |
| 400 | Black Grey |
| 409 | Red Grey |

Applies to:

- Exponents mobile cart, moby, and mobile display casters
- | | |
|------|--------------|
| 6000 | Black |
| 6009 | Arctic White |

Applies to:

- Lox chairs
- | | |
|------|-------|
| 6345 | Black |
| 6346 | White |

Applies to:

- Lox stools
- | | |
|------|-------------|
| 6347 | Black Gloss |
| 6348 | White Gloss |

Applies to:

- SW_1 tablets, grommet, barrier, wire manager, sub-structure, lounge tablet, Sebastopol grommet
- | | |
|------|-------|
| 6000 | Black |
| 6052 | Milk |

Applies to:

- Potrero415 3 mm edge
- | | |
|------|----------------|
| 6001 | Coffee |
| 6009 | Arctic White |
| 6011 | Ash |
| 6012 | Ingot |
| 6052 | Milk |
| 6090 | Amber Cherry |
| 6091 | Fusion Maple |
| 6093 | Dove Grey |
| 6126 | Greige |
| 6128 | Taupe |
| 6249 | Platinum Solid |
| 6635 | Dawn |

Applies to:

- Grommet, spheres, flex-gangers, Mini-Port, Interport, casters, horizontal wire manager, and vertical wire manager
- Black plastic

TAP Door Finishes

Brushed Anodized Aluminum

Applies to:

- Host
- | | |
|------|--------|
| 8044 | Black |
| 8047 | Silver |

Utility Bay

Applies to:

- E-Table 2
- | | |
|------|---------------|
| 4137 | Matte Black |
| 4745 | Nickel Mica |
| 4746 | Silver Mica |
| 4747 | Charcoal Mica |

Glass Doors

Applies to:

- Host credenzas
- Frosted glass

Door Hardware

Applies to:

- Exponents Version 1
- | | |
|------|-----------------|
| 9152 | Satin Nickel |
| 9201 | Polished Chrome |

Locks

Applies to:

- Denizen and Exponents
- | | |
|------|--------------|
| 9211 | Nickel |
| 9250 | Ember Chrome |

Interior and Plinth

Applies to:

- Exponents
- Black Melamine

Papercord Seating

Applies to:

- Carl Hansen & Son
- | | |
|------|---------|
| P500 | Black |
| P501 | Natural |
| P502 | White* |
- * White papercord is available on CH24 Wishbone chair only.

Solid

Applies to:

- Denizen Bento Box
- | | |
|------|-------------|
| 2976 | White Solid |
|------|-------------|

Applies to:

- Denizen, Exponents, Potrero415, and SW_1 Tables
- | | |
|------|---------------|
| 2801 | Glacier White |
|------|---------------|

Applies to:

- CG_1
- | | |
|------|----------------|
| 2010 | Black |
| 2011 | Midnight Black |
| 2012 | Blue |
| 2013 | Red |
| 2801 | Glacier White |

Grommet

Applies to:

- Exponents
- | | |
|------|----------------|
| 4135 | Black Matte |
| 4141 | Platinum Black |

Power, Voice Data Modules

Applies to:

- Exponents
- | | |
|------|--------------------|
| 4140 | Arctic White Gloss |
| 4141 | Black Gloss |

Soft Surface Worksurface

Applies to:

- Free Stand
- | | |
|------|-------|
| 4433 | Black |
|------|-------|

Glossy Laminate

Applies to:

- Sebastopol
- | | |
|------|---------------------|
| 2001 | Smoky White Glossy |
| 2002 | Studio Gray Glossy |
| 2003 | Wrought Iron Glossy |
| 2004 | Black Pearl Glossy |
| 2005 | Liberty Red Glossy |

Power Module Finishes

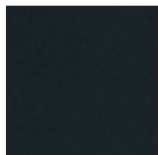
Brushed Anodized Aluminum

Applies to:

- Potrero415
- | | |
|------|--------|
| 8044 | Black |
| 8047 | Silver |

Edges Palette

E-Table Utility Bay



4137 Matte Black



4745 Nickel Mica



4746 Silver Mica



4747 Charcoal Mica

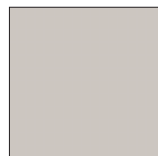
1½" Au Lait Cast Urethane, Au Lait, and Convex Vinyl Edge



6000 Black



6655 Warm White



6607 Woodrose



6609 Smoke

Plastic and Miscellaneous Palette

CG_1 - Solid Surface colors for the leg insert



Black
2010



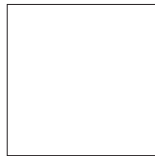
Midnight Brown
2011



Blue
2012



Red
2013



Glacier White
2801

Emu Lyze - Fiber Cement



White/Grey
FC01

Emu Kira and Terramare - Porcelain Stoneware



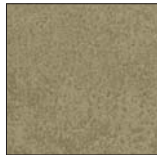
Basaltina
ST01



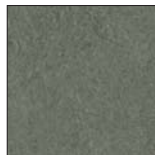
Statuario White
ST02



Emperador
ST03



Fokos Rena
ST04



Savoia Grey
ST05

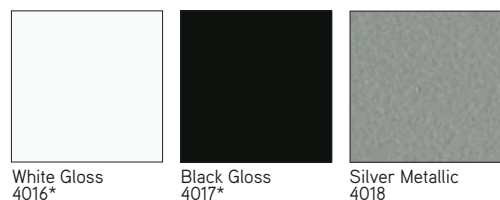
Plastic and Miscellaneous Palette *continued*

Enea Plastic (Note: see next page for Enea Lottus Finish Selection)



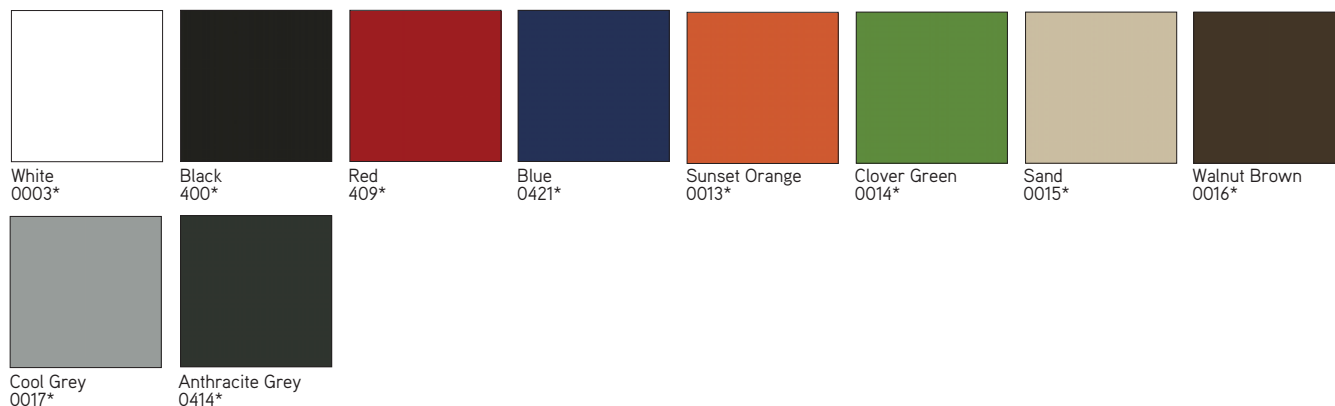
*Available on both Enea and Enea Lottus.

Enea Paint (Note: see next page for Enea Lottus Finish Selection)



*Available on both Enea and Enea Lottus.

Enea Lottus Plastic (Note: see previous page for Enea Finish Selection)



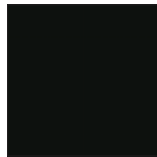
*Available on both Enea and Enea Lottus.

Plastic and Miscellaneous Palette

Enea Lottus Paint (Note: see previous page for Enea Finish Selection)



White Gloss
4016*



Black Gloss
4017*



Red
4216



Brown
4217



Platinum Silver
4218

*Available on both Enea and Enea Lottus.
Tip: 4216 not available on Enea Lottus tables.

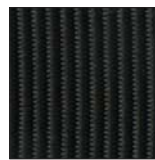
Hosu – Ottoman Pull Tab



Red
CL40

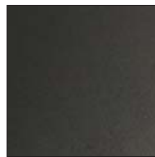


Blue
CL41



Black
CL42

Lox Chair Plastic

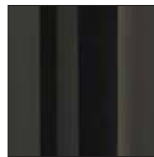


Black
6345



White
6346

Lox Stool Plastic



Black Gloss
6347



White Gloss
6348

Sebastopol – Glossy laminate colors for interior surface



Smoky White
Glossy
2001



Studio Gray Glossy
2002



Wrought Iron
Glossy
2003



Black Pearl Glossy
2004

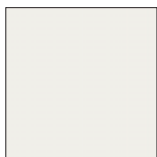


Liberty Red Glossy
2005

SW_1 Tablet, Grommet, Barrier, Wire Manager, Sub-structure and Sebastopol Grommet

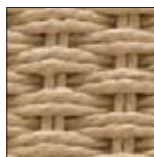


Black
6000

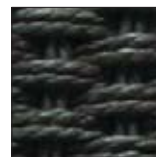


Milk
6052

Papercord



Natural
P501



Black
P500

Denizen, Exponents, Potrero415, and SW_1 Exclusives

Denizen Veneer Exclusive

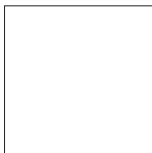


Quarter Cut Grey
Ash
V2AA



Quarter Cut Teak
V2AT

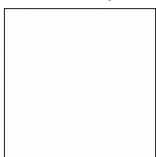
Denizen Bento Box



White Solid
2976

Note: Denizen wood veneer palette also includes the following: Maple Quarter Cut - Low Sheen, Cherry Quarter Cut - Low Sheen, Oak Rift Cut - Low Sheen, Walnut Quarter Cut - Low Sheen.

Denizen, Exponents, Potrero415, and SW_1 Solid Exclusive



Glacier White
Corian
2801

Denizen, Exponents, and SW_1 Exclusives

Care and Maintenance

Chrome

Use commercial cleanser and polish, according to manufacturer's directions.

Fabric

Under normal use, clean with soft cloth dampened with water. For spots and spills, we recommend professional cleaning. For COM, refer to the specific cleaning instructions recommended by the fabric supplier.

Emu Outdoor Fabric:

Remove loose dirt with soft bristle brush or hose down with cold water. Clean with mixture of water and mild soap. Rub in mixture with soft brush and allow to thoroughly soak into fabric. Rinse thoroughly with cold water and air dry. Never use water over 100 degrees Fahrenheit. Do not machine dry. For light cleaning, avoid using detergents.

For stubborn stains use mixture of one gallon cold water, ½ cup bleach and ¼ cup mild soap for one hour.

Detergents can be used without harm, though they may remove some of the water and stain resistant properties in the fabric.

SW_1 Knit:

Clean with warm water and soap. Wet sponge and wipe fabric. Household cleaners such as Windex™ may be used. Do NOT use cleaners containing bleach.

Laminate and solid phenolic

should be cleaned with soap and water. For stubborn stains, use a non-abrasive household cleaner.

SW_1 Tablet surfaces clean with soft cloth dampened with water and soap, if needed. The use of general purpose cleaners are acceptable but must be void of citric content that has z-butoxyethanol in the formulation listing.

Cleaning Laminate

Markerboard Surface

Use dry erase markers only. Remove dry-erase markings with a markerboard eraser or soft cloth as often as possible. Change erasers, as they become dirty. Dirty erasers will leave ink residue on the surface.

For daily cleaning, or as needed, use a dry erase cleaner, or a non-abrasive household cleaner, such as glass cleaner. This may be done with a soft cloth or sponge. Dry the surface with a soft cloth prior to writing. All markings should be removed weekly.

Caution:

- Do not use permanent markers on markerboard surfaces. In the event a permanent marker is used, removal of markings may be attempted by using dry erase cleaner, or by writing over the marking with a dry erase marker and erasing with a markerboard eraser or soft cloth.
- Do not use abrasive cleaners or solvent type cleaning solutions, such as Ketones (Acetone, MEK, etc.) lacquer thinner, nail polish remover, etc. because they may remove the finish from the markerboard surface.

Cleaning e³ ceramicsteel Markerboard Surface

- Wipe board with a clean cloth moistened by a liquid markerboard cleaner or a solution of 50% water and 50% isopropyl alcohol.
 - Rinse with clear water.
 - Wipe dry with a clean cloth
- If your board is used daily, the cleaning should be performed at least 2-3 times a week.

More thorough cleaning may be required if writing is left on the board for more than two days.

Markers

Use any high-quality dry erase marker.

CAUTION! The use of Low Odor markers may cause ghosting to occur. If Low Odor markers have been used, the surface can be completely cleaned by following the cleaning instructions above. Remember to discard eraser if used with Low Odor markers.

Removing Permanent Marker

Option 1:

- Write over the top of the permanent marker ink with a dry-erase marker
- Simply erase

Option 2:

- Moisten a clean, dry cloth with isopropyl alcohol
- Wipe the board in a circular motion to loosen marker residue
- Rinse with clear water
- Dry the board with a clean cloth
- Repeat these steps as necessary

Installer's Instructions for Initial Cleaning at Time of Installation

NOTE: These initial cleaning instructions are shipped with every board.

- For initial cleaning, wipe your board with a clean cloth moistened by a mild, alcohol-based cleaner.
- Rinse with clear water. This step is simple, but very important.
- Wipe dry with a clean cloth.

Leather

Under normal use, regular dusting and vacuum cleaning are all that is necessary. For spots and spills, wipe excess liquid immediately. If necessary, use lukewarm water cleaning the entire area where spot occurred and air dry. For stubborn spots or stains, use a solution of mild non-detergent soap and air dry. For butter, oil, or grease, wipe excess with dry cloth and then leave alone. The spot will dissipate into the leather. Do not apply water.

Faux Leather

Under normal use, clean with soft cloth dampened with water. For spots and stains, use the recommended mixture of Woolite and water. Rinse with clean water and air dry.

Granite/Glass

Under normal use, clean with Windex and soft cotton cloth.

Powder coat finishes on chairs and table bases

should be cleaned with a liquid detergent and water. Remove stubborn stains with liquid cleanser, such as Formula 409.

Emu Outdoor Paint:

Store in an enclosed and dry area during winter to avoid condensation. Before winter and regularly every quarter, clean the metal surfaces with a cloth dipped in water or detergent and protect them with vasoline oil or car polish. Do not use ethyl alcohol or detergents that contain even in small quantities acetone, trichloroethylene, or ammonia (or solvents in general). When storing tables, do not stack them or put the table tops in direct contact with each other. Handle the seats with care when stacking them to avoid damaging the varnished surfaces.

Polished Aluminum finishes

on table bases and chair arms should be cleaned with a commercial powder, liquid, or paste metal cleaner and polish. Follow the manufacturer's directions.

Veneers and painted MDF

should be cleaned regularly with mild soap and water and dried with a soft cloth. Tip: Never use ammonia-based cleaners or wax on wood surfaces.

Protecting Wood Surfaces

Use desk pads and coasters to help protect the finish against dents, scratches, moisture and hot and cold liquids. Do not use desk pads that have plastic backing. Use felt or leather pads on the bottoms of office equipment and accessories.

Periodically move desk accessories and other objects kept on the worksurface to ensure even aging.

Lift objects when you move them, instead of pulling or pushing them across the surface, to avoid scratching the surface. Avoid leaving vinyl binders on worksurface for long periods.

If you use a protective glass top, insert felt pads between the glass and the worksurface, to create an air space and allow the wood to breathe.

Keep your furniture away from direct sunlight. Avoid extreme temperatures and humidity. Maintain temperatures between 60 and 80 degrees Fahrenheit and humidity levels between 30 and 50 percent.

Cleaning Wood Surfaces

Keep a supply of soft, clean, absorbent cloths handy for wiping up spills and regular dusting.

To dust, wipe with a slightly damp, soft cloth, using another soft cloth to dry. Always wipe the surface in the direction of the woodgrain.

Use a quality cleaner or flax soap formulated especially for use on wood surfaces. Do not use oils or ammonia. Dilute the cleaner as directed by the manufacturer. Dampen but do not saturate a soft cloth with the diluted cleaning solution. Wipe the surface in the direction of the woodgrain to remove dirt and fingerprints. Wipe the surface clean with a soft, dry cloth.

Care and Maintenance

For Carl Hansen Wood Finishes:

Oil/White Pigmented Oil:

Wipe clean with damp cloth. Wood should be treated twice per year on all surfaces, or as needed to remove scratches and stubborn stains.

Stain/Varnish, Clear lacquer, CHS Color:

Wipe clean with damp cloth.

Vinyl

Under normal use, clean with soft cloth dampened with mild soap solution. For stubborn stains and spills, a sponge or soft brush may be used with mild non-abrasive cleaner.

Transolid/Corian:

Clean regularly with mild soap and water. Dry with a soft cloth.

Tables should be inspected and maintained regularly by tightening screws and bolts, inspecting casters and glides for damage, and inspecting all moving parts for damage and wear.

For LessThanFive Chair Finishes:

- To clean a chair, start with water and a soft cloth, like microfiber (do not use abrasive cleaners or materials like paper towel)
- If water does not clean the chair, use a common solution, like Formula 409 or window cleaner, with a soft cloth
- For removal of indigo from denim, use isopropyl alcohol (rubbing alcohol) with a soft cloth
- To remove small scratches on the high gloss chairs (Carbon Weave, Red Fade, and Copper), only wax-based paste, like SC Johnson Paste Wax or Trewax Clear Paste Wax, can be used. Waxing is not recommended for matte chairs (Light Fade, Dark Fade, and Blue), as this will change the matte finish of the chair.

For Fusion Fabric:

Following these guidelines will help to extend the life of the fabric:

- Clean regularly with soap and water
- Wipe up spills as soon as they occur
- Use alcohol based cleaners, such as Fantastik® and Formula 409®
- Sanitize using disinfectants such as: bleach (20%) water solution, hydrogen peroxide based, or quaternary based
- For stubborn stains, wipe the stain off with isopropyl alcohol (rubbing alcohol) as soon as possible
- Thoroughly rinse all solution residue with clean water
- Air dry

Trademark List

® The following are registered trademarks for products of Steelcase Inc. or one of its related corporate entities: 4 o'clock, 900 Series, à la carte, Airtouch, Ally, Amia, Answer, Archipelago, Avenir, Ballet, Bix, Brayton International, Cachet, Canopy, Canto, Chancellor, Coalesse, Confidante, Context, Convene, CopyCam, Criterion, Crushed Can, Currency, dash, Designtex, Details, Detour, Drive, Elective Elements, Ellipse, Ember Chrome, Emerge, E-Table 2, FYI, Garland, Gentry, Ginkgo Biloba, Groupwork, Ideo, Jacket, Jenny, Jersey, Kart, Kick, LaCosta, Leap, Let's B, LiveBack, Max-Stacker, media:scape, Metro, Migrations, Mitra, Montage, Nurture, Oriana, Parade, Pathways, PCT, Permiso, Player, PolyVision, Portal, Power Pincher, Progeny, Protégé, R2, Rally, Relevant, Reply, Rizzi Arc, Sensor, Series 9000, Siento, Sieste, Sine, Softcare, Springboard, Steelcase, Steelcase Design Partnership, Stella, Stow Davis, Swathmore, TeamWork, Technique, Texpress, Think, Thunder, Topo, Train, turnstone, Underline, Unison, Vecta, Viridian, Walden, Werndl, and X-Stack.

® The following registered trademarks are under license from AWI Licensing Company, Dover, DE: SoundScapes, DuraBrite, BioBlock, and Armstrong.

® The following registered trademarks are under license from Byrne Electrical, Rockford, MI: Interport, Mini-Port, Axil Z, and Ellora.

® The following is a registered trademark of DuPont, Wilmington, DE: Corian.

® The following is a registered trademark of Genlyte Thomas Company, Louisville, KY: Lightolier.

® The following is a registered trademark of Hilti Corporation, FL-9494 Schaan, Principality of Liechtenstein: Hilti.

® The following is a registered trademark of Leviton Manufacturing Company, Little Neck, NY: Decora.

® The following is a registered trademark of Mechanical Plastics Corp, Elmsford, NY: Toggler.

® The following is a registered trademark of Microsoft Corporation, Redmond, WA: Microsoft.

® The following is a registered trademark of Panduit Corporation, Lockport, IL: Panduit.

® The following is a registered trademark of Trav (Press), Cuneo, Italy: Assisa.

® The following is a registered trademark of Virtual Ink, Boston, MA: mimioActive.

® The following registered trademarks are under license from Wilkhahn Furniture Products: Avera, Senzo, Versal, and Wilkhahn FS.

® The following is a registered trademark of Wilsonart International, Temple, TX: Chemsurf.

® The following is a registered trademark of Wiremold, West Hartford, CT: Wiremold.

® The following is a registered trademark of EMU Group S.P.A., Perugia, Italy: Emu.

™ The following are trademarks for products of Steelcase Inc. or one of its related corporate entities: Access, Active/Passive Shelf, Ainsley, Akira, Alcove, Alerion, alight, Amaris, American Elect, American Tradition, ap40, Arbor, Arriva, Asana, Ascot, Aspekt, Astor, Await, Bassline, B-Free, Bira, Bivi, Bottomline, Brody, Brook, Buoy, Burton, c:scape, Calla, Calm, Camber, Campfire, Capa, Cappuccino, Cesar, Chester, Chord, Circa, Clarendon, Classic Rectangular, cobi, Collaboration, Community, Company, Convey, Cortex, Coupe, Crea, Crew, Cura, Cypress, Davenport, Dearborn, Deck, Déjà, Denizen, Denska, Derby, Divisio, Donovan, Dune, Duo, e³, e³ ceramicsteel, e³ environmental ceramicsteel, Echo, Edge, Elsna, Empath, Empress, Enea, ãno, EnSync, Enviro, Escapade, Exchange, Exponents, Field, Flat Top, FlexFrame, Flip Top, Flute, Folio, FrameOne, FreeFlow, Frontier, Galilei, Gesture, Ginger, Ginkgo, Go Wall, Grip, Groove, Hatchback, Hawthorne, Hitch, Host Collection, Hosu, Huddleboard, i2i, Impact, Indy, InfoLink, IOS, I-Solve, Jack, Jarrah, Jetty, Juice, Kami, Kast, Kathryn, Lagunitas, Lark, L'Attitude, LearnLab, Leela, LessThanFive, Lincoln, Linden, LiveSeat, Loria, Lyric, Malibu, Malibu Too, Mansfield, Marathon, Martini, Mason, Masque, Migration, Millbrae, Mineral, Mingle, Mystic, Mistic Metal, Mistic Wood, Montara650, Montreal, Move, Nadia, Neighbor, nesso, Nickel, Nikko, Nod, Node, Norfolk, Ology, Ontrak, Oom, Opus, Orchid, Outlook Collection, Ovation, Paloma, Paperflo, Parliament, Pasio, Passerelle, Patriarch, Payback, Peek, Pile File, Pisa, Pool, Potrero415, PUCK, QiVi, Quba, Rave, Reed, Regard, Relay, Reunion, Ripple, Riser, Rocco, Rocky, RoomWizard, Runner, Satellite, Sawyer, ScapeSeries, Senti, Sentinel, Senza, Sequoia, Session, ShareLink, Shield, Shortcut, Sidewalk, Skylar, Slumber, Smoke, Snug, Soft Leaf, Sonata, Sorrel, SOTO, Stationkits, Steelcase Series, Stiletto, Surprise!, Surround, Switch, Symphony, Sync, TagWizard, Tava, TeamStudio, TeamTheater, Tenaro, Terrazzo, Theorem, Thread, Topaz, Touchdown, Tour, Tower Too, Trees, Trillium, Trolly, tX2, U-Free, Uno, V.I.A., Verb, Verge, Victor2, Visalia, Waldorf, Woodruff, Workspring, and X-tenz.

™ The following is a trademark of Microsoft Corporation, Redmond, WA: Windows.

™ The following is a trademark of Rodman Industries, Inc., Oconomowoc, WI: ResinCore1.

™ The following is a trademark of Ultrafabrics, LLC, Elmsford, NY: Ultraleather.

™ The following trademarks are under license from Wilkhahn Furniture products: Cana, Linus, Logon, Picto, Range, Stitz, Thema, Timetable, and Tubis.

™ The following is a trademark of MBDC, Charlottesville, VA: Cradle to Cradle and C2C.

™ The following trademarks are under license from Walter Knoll: Andoo, Bob, Lazlo, Lox, Ribbon, and Together.

™ The following trademarks are under license from PP Möbler: Bar and Flag Halyard.

™ The following trademarks are under license from Viccarbe: Davos, Holy Day, Last Minute, RS, and Wrapp.

™ The following trademarks are under license from Carl Hansen: Elbow, Paddle, Shell, Wing, and Wishbone.

™ The following trademarks are under license from Cambridge Sound Management, LLC, Cambridge, MA: QtPro Soundmasking, Qt Quiet Technology, and Sonet Qt.

™ The following is a trademark of Electri-Cable Assemblies, Shelton, CT: Interact.

Trademarks used here in are the property of Steelcase, Inc. or of their respective owners.