



Prices effective February 6, 2017

Casework

Introduction	page 2
Casework	3
Base Cabinets	5
Work Surfaces	29
Overhead Cabinets	38
Storage Cabinets	46
Base Cabinet Components	50
Overhead Cabinet Components	65
Storage Cabinet Components	69
Indices	79
By Name	79
By Number	81
Appendices	
20-Day or Less/Assigned Lead-Time Order Information-Healthcare	
Packaging/Keyed-Alike Information-Casework	
For the latest materials information, refer to the Materials pages on HermanMiller.com.	

Introduction

A Note on the Organization of This Book

There are a few signals that will help you understand the organization of this book. Once you know them, you should be able to find your way around easily.

Like a newspaper, this book is formatted with columns of text and illustrations that run vertically.

Information wraps from one column to the next and continues for as many pages as it needs to.

Black bars are clues.

A black bar at the top of a page signals the start of information about a product.

This information is divided into two sections, each signaled by a black bar. Product Information includes a description, additional notes, and dimensional drawings. Specification Information, which always begins at the top of a column, includes a series of steps. Each step represents a decision you need to make in order to complete your product number. Steps must be followed sequentially. The number of pages needed to complete information on a product varies; some will be complete in one page; others may fill three or four pages. Just continue going through the steps until you run into the next product, signaled by the black bar at the top of the page.

Black tabs running along the outside edge of the page help you locate what section you are in or what section you want to go to. You can thumb forwards or backwards to find a section; tabs and text appear on both sides of the page.

The additional pages in the back of the book include the appendices and indices. They are signaled by a long black bar running along the outside edge of the page.

The index is presented two ways.

The first index is in alphabetical order by product name. It can be helpful if you are new to the products and numbering scheme or if you are looking for a type of product, such as work chair or round table.

The second index is by product number. It lists, in alphanumeric order, the base product number, typically a five-digit number.

General Information

This book is effective February 6, 2017, subject to change without notice. Products may be purchased from authorized Herman Miller dealers who will quote prices upon request. For more information about our products and services or to see a list of dealers, visit www.HermanMiller.com.


All prices are list prices. Additional services, such as planning services, design, storage, and installation, are not included and must be added to these prices when the additional services are requested.


Illustrations, specifications, and prices are based on the latest information at the time of publication. The right is reserved to make changes at any time without notice in prices, fabrics, finishes, materials, specifications, and models, and also to discontinue models and finishes.

Dimensions shown in the drawings are engineering drawing dimensions rounded up to the nearest $\frac{1}{8}$ ". Product is shipped set up or knocked down. Products that include "Shipped knocked down" in the description require some assembly. If this statement does not appear in the description, the product is shipped assembled.

Service problems are normally handled by a Herman Miller authorized dealer. Where this cannot be accomplished on a local level, service problems should be referred to the Customer Care Representative for your region, Herman Miller, Inc., Zeeland, Michigan 49464.

20-Day or Less/Assigned Lead-Time Shipments

All products and options in this price book not designated by an Assigned Program icon  will ship in **20 business days or less** after being acknowledged by Herman Miller.

Products and options designated by an  are on the assigned lead-time program and may ship in 20 days, less than 20 days, or more than 20 days from order acknowledgement.

Base Cabinets

Work Surfaces

Overhead Cabinets

Storage Cabinets

Base Cabinet Components

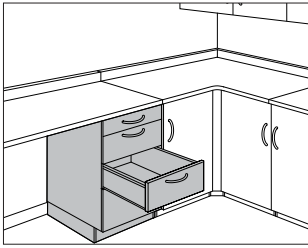
Overhead Cabinet Components

Storage Cabinet Components



Base Cabinet with Drawers

CG602.
CG604.



Product Information

Description

This cabinet has 4 drawers and adjustable glides. Cabinet height without work surface adjusts from 34" to 35½" high.

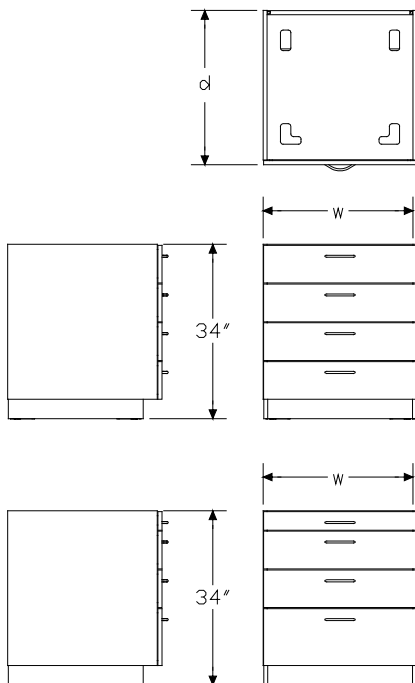
Notes

Order work surface (CG211. or CG212.) or corner work surface (CG218. or CG219.) separately.

For keyed differently lock option (L), all 4 drawers have independent locks.

For keyed-alike locks (K), order lock plugs separately. See Keyed-Alike Information in Appendices.

Dimensions



Specification Information

Step 1.

CG60

Step 2. Configuration

- 2.** 4 medium drawers
- 4.** 4 drawers: 1 small, 2 medium, 1 large

Step 3. Depth

- 18** 18" deep
- 24** 24" deep
- 30** 30" deep

Step 4. Width

- 18** 18" wide
- 24** 24" wide
- 30** 30" wide

Step 5. Lock

- N** no lock
- L** keyed differently
- K** keyed alike

Prices for Steps 1-5.

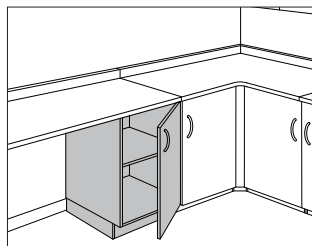
		N	L	K
CG602.	18 18	\$1849	2070	2070
	24	\$2100	2322	2322
	30	\$2392	2613	2613
	24 18	\$1888	2109	2109
	24	\$2135	2356	2356
	30	\$2416	2639	2639
	30 18	\$2128	2347	2347
	24	\$2384	2605	2605
	30	\$2635	2858	2858
CG604.	18 18	\$1849	2070	2070
	24	\$2100	2322	2322
	30	\$2392	2613	2613
	24 18	\$1888	2109	2109
	24	\$2135	2356	2356
	30	\$2416	2639	2639
	30 18	\$2128	2347	2347
	24	\$2384	2605	2605
	30	\$2635	2858	2858

Casework Base Cabinets

Step 6. Surface Finish		
HF	inner tone light	+\$0
LT	light tone	+\$0
LU	soft white	+\$0
WN	warm grey neutral	+\$0
76	light brown walnut	+\$160
91	white	+\$160
HM	natural maple	+\$160
HX	aged cherry	+\$160
OG	honey maple	+\$240
Step 7. Pull Option/Finish		
NN	none	+\$0
BK	black	+\$0
NH	brushed nickel	+\$0

Base Cabinet with Door

CG608.
CG609.



Product Information

Description

This cabinet has a shelf and door and adjustable glides. The shelf is height adjustable in $1\frac{1}{4}$ " increments. Cabinet height without work surface adjusts from 34" to 35 $\frac{1}{2}$ " high.

Notes

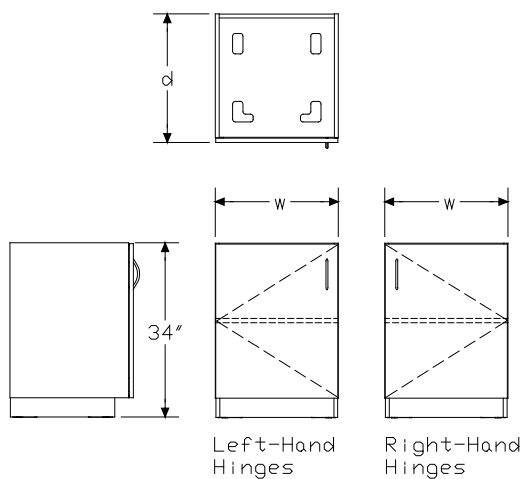
Order work surface (CG211. or CG212.) or corner work surface (CG218. or CG219.) separately.

Order interior components separately:

- Waste container holder (CG903.)

For keyed-alike locks, order lock plugs separately. See Keyed-Alike Information in Appendices.

Dimensions



Specification Information

Step 1.

CG60

Step 2. Hinge Location

- 8.** left-hand hinges
- 9.** right-hand hinges

Step 3. Depth

- 18** 18" deep
- 24** 24" deep
- 30** 30" deep

Step 4. Width

- 18** 18" wide
- 24** 24" wide

Step 5. Lock

- N** no lock
- L** keyed differently
- K** keyed alike

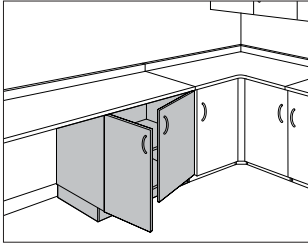
Prices for Steps 1-5.

	N	L	K
CG608. 18 18	\$1014	1072	1072
24	\$1141	1200	1200
24 18	\$1100	1161	1161
24	\$1238	1299	1299
30 18	\$1216	1275	1275
24	\$1362	1420	1420
CG609. 18 18	\$1014	1072	1072
24	\$1141	1200	1200
24 18	\$1100	1161	1161
24	\$1238	1299	1299
30 18	\$1216	1275	1275
24	\$1362	1420	1420

Casework Base Cabinets

Step 6. Surface Finish		
HF	inner tone light	+\$0
LT	light tone	+\$0
LU	soft white	+\$0
WN	warm grey neutral	+\$0
76	light brown walnut	+\$90
91	white	+\$90
HM	natural maple	+\$90
HX	aged cherry	+\$90
OG	honey maple	+\$135
Step 7. Pull Option/Finish		
NN	none	+\$0
BK	black	+\$0
NH	brushed nickel	+\$0

Base Cabinet with Double Doors CG614.



Product Information

Description

This cabinet has a shelf and 2 doors and adjustable glides. The shelf is height adjustable in 1 $\frac{1}{4}$ " increments. Cabinet height without work surface adjusts from 34" to 35 $\frac{1}{2}$ " high.

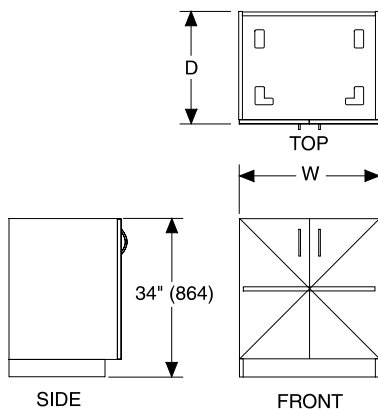
Notes

Order work surface (CG211. or CG212.) or corner work surface (CG218. or CG219.) separately.

Double doors with lock option are controlled by 1 lock.

For keyed-alike locks, order lock plugs separately. See Keyed-Alike Information in Appendices.

Dimensions



Specification Information

Step 1.

CG614.

Step 2. Depth

18	18" deep
24	24" deep
30	30" deep

Step 3. Width

For 18" deep (18) or 30" deep (30)

30	30" wide
-----------	----------

For 24" deep (24)

24	24" wide
30	30" wide
36	36" wide

Step 4. Lock

N	no lock
L	keyed differently
K	keyed alike

Prices for Steps 1-4.

	N	L	K
CG614. 18 30	\$1212	1271	1271
24 24	\$1291	1350	1350
30	\$1318	1375	1375
36	\$1423	1481	1481
30 30	\$1440	1500	1500

Step 5. Surface Finish

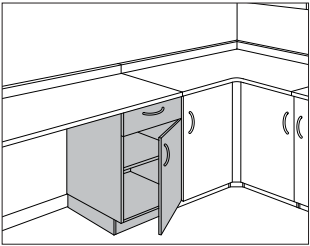
HF	inner tone light	+\$0
LT	light tone	+\$0
LU	soft white	+\$0
WN	warm grey neutral	+\$0
76	light brown walnut	+\$100
91	white	+\$100
HM	natural maple	+\$100
HX	aged cherry	+\$100
OG	honey maple	+\$150

Step 6. Pull Option/Finish

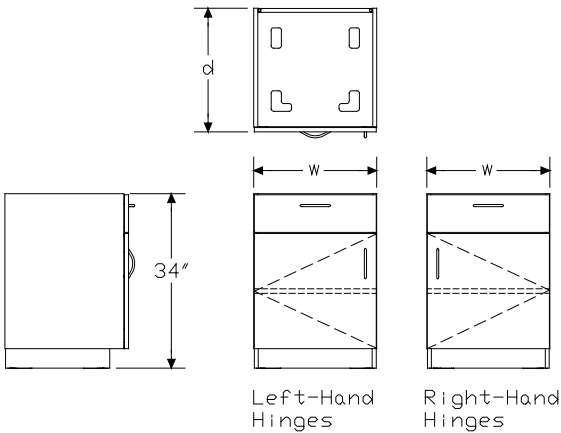
NN	none	+\$0
BK	black	+\$0
NH	brushed nickel	+\$0

Base Cabinet with Drawer and Door

CG626.
CG627.



Product Information
Description This cabinet has a medium drawer, a shelf, a door and adjustable glides. The shelf is height adjustable in 1¼" increments. Cabinet height without work surface adjusts from 34" to 35½" high.
Notes Order work surface (CG211. or CG212.) or corner work surface (CG218. or CG219.) separately. Base cabinet with lock includes lock on drawer and door. For keyed-alike locks, order lock plugs separately. See Keyed-Alike Information in Appendices.
Dimensions



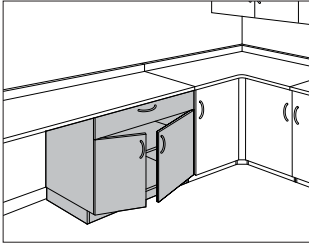
Specification Information				
Step 1.				
CG62				
Step 2. Hinge Location				
6.	left-hand hinges			
7.	right-hand hinges			
Step 3. Depth				
18	18" deep			
24	24" deep			
30	30" deep			
Step 4. Width				
18	18" wide			
24	24" wide			
Step 5. Lock				
N	no lock			
L	keyed differently			
K	keyed alike			
Prices for Steps 1-5.				
		N	L	K
CG626.	18 18	\$1184	1309	1309
	24	\$1318	1440	1440
	24 18	\$1257	1379	1379
	24	\$1408	1530	1530
	30 18	\$1364	1487	1487
	24	\$1540	1663	1663
CG627.	18 18	\$1184	1309	1309
	24	\$1318	1440	1440
	24 18	\$1257	1379	1379
	24	\$1408	1530	1530
	30 18	\$1364	1487	1487
	24	\$1540	1663	1663

Base Cabinet with Drawer and Door *continued*

Step 6. Surface Finish		
HF	inner tone light	+\$0
LT	light tone	+\$0
LU	soft white	+\$0
WN	warm grey neutral	+\$0
76	light brown walnut	+\$100
91	white	+\$100
HM	natural maple	+\$100
HX	aged cherry	+\$100
OG	honey maple	+\$150
Step 7. Pull Option/Finish		
NN	none	+\$0
BK	black	+\$0
NH	brushed nickel	+\$0

Base Cabinet with Drawer and Double Doors

CG625.



Product Information

Description

This cabinet has a medium drawer, a shelf, 2 doors and adjustable glides. The shelf is height adjustable in $1\frac{1}{4}$ " increments. Cabinet height without work surface adjusts from 34" to 35 $\frac{1}{2}$ " high.

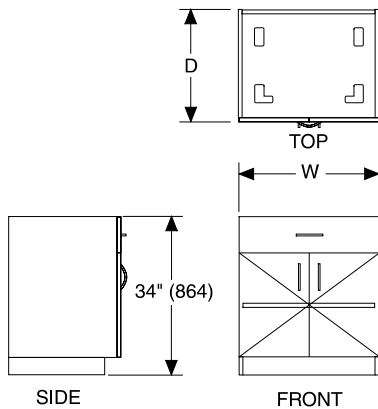
Notes

Order work surface (CG211. or CG212.) or corner work surface (CG218. or CG219.) separately.

Base cabinet with lock includes lock on drawer and both doors.

For keyed-alike locks, order lock plugs separately. See Keyed-Alike Information in Appendices.

Dimensions



Specification Information

Step 1.

CG625.

Step 2. Depth

18	18" deep
24	24" deep
30	30" deep

Step 3. Width

For 18" deep (18) or 30" deep (30)

30	30" wide
-----------	----------

For 24" deep (24)

24	24" wide
30	30" wide
36	36" wide

Step 4. Lock

N	no lock
L	keyed differently
K	keyed alike

Prices for Steps 1-4.

	N	L	K
CG625. 18 30	\$1603	1724	1724
24 24	\$1635	1757	1757
30	\$1674	1793	1793
36	\$1711	1833	1833
30 30	\$1722	1844	1844

Step 5. Surface Finish

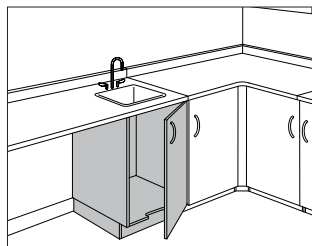
HF	inner tone light	+\$0
LT	light tone	+\$0
LU	soft white	+\$0
WN	warm grey neutral	+\$0
76	light brown walnut	+\$120
91	white	+\$120
HM	natural maple	+\$120
HX	aged cherry	+\$120
OG	honey maple	+\$180

Step 6. Pull Option/Finish

NN	none	+\$0
BK	black	+\$0
NH	brushed nickel	+\$0

Sink Cabinet with Door

CG636.
CG637.



Product Information

Description

This 24"-wide cabinet has a base cabinet bottom with a foot pedal cutout, a door and adjustable glides. Cabinet height without work surface adjusts from 34" to 35 1/2" high.

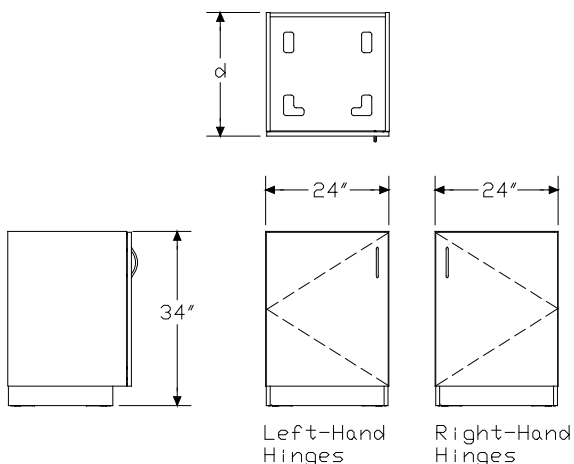
Notes

Order Corian® work surface (CG212. or CG219.) separately.

Sink must be customer supplied and field installed.

For keyed-alike locks, order lock plugs separately. See Keyed-Alike Information in Appendices.

Dimensions



Specification Information

Step 1.

CG63

Step 2. Hinge Location

- 6.** left-hand hinges
- 7.** right-hand hinges

Step 3. Depth

- 1824** 18" deep
- 2424** 24" deep
- 3024** 30" deep

Step 4. Lock

- N** no lock
- L** keyed differently
- K** keyed alike

Prices for Steps 1-4.

	N	L	K
CG636. 1824	\$1081	1149	1149
2424	\$1127	1197	1197
3024	\$1212	1278	1278
CG637. 1824	\$1081	1149	1149
2424	\$1127	1197	1197
3024	\$1212	1278	1278

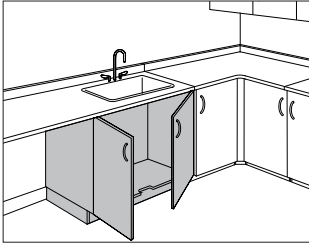
Step 5. Surface Finish

HF	inner tone light	+\$0
LT	light tone	+\$0
LU	soft white	+\$0
WN	warm grey neutral	+\$0
76	light brown walnut	+\$80
91	white	+\$80
HM	natural maple	+\$80
HX	aged cherry	+\$80
OG	honey maple	+\$120

Step 6. Pull Option/Finish

NN	none	+\$0
BK	black	+\$0
NH	brushed nickel	+\$0

Sink Cabinet with Double Doors CG635.



Product Information

Description

This cabinet has a base cabinet bottom with a foot pedal cutout, 2 doors and adjustable glides. Cabinet height without work surface adjusts from 34" to 35 1/2" high.

Notes

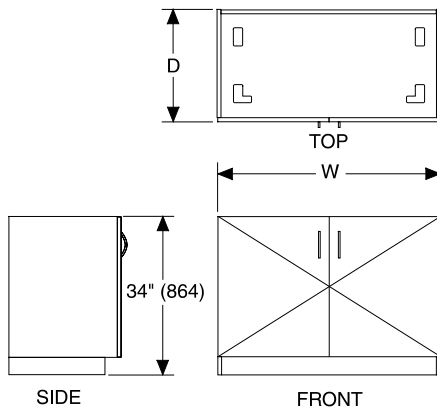
Order Corian® work surface separately:

- Corner work surface (CG219.) for 30"-wide sink cabinet only
- Work surface (CG212.)

Sink must be customer supplied and field installed.

For keyed-alike locks, order lock plugs separately. See Keyed-Alike Information in Appendices.

Dimensions



Specification Information

Step 1.

CG635.

Step 2. Depth

24	24" deep
30	30" deep

Step 3. Width

For 24" deep (24)

30	30" wide
36	36" wide

For 30" deep (30)

30	30" wide
-----------	----------

Step 4. Lock

N	no lock
L	keyed differently
K	keyed alike

Prices for Steps 1-4.

	N	L	K
CG635. 24 30	\$1267	1331	1331
36	\$1366	1431	1431
30 30	\$1370	1435	1435

Step 5. Surface Finish

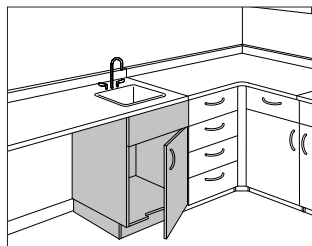
HF	inner tone light	+\$0
LT	light tone	+\$0
LU	soft white	+\$0
WN	warm grey neutral	+\$0
76	light brown walnut	+\$100
91	white	+\$100
HM	natural maple	+\$100
HX	aged cherry	+\$100
OG	honey maple	+\$150

Step 6. Pull Option/Finish

NN	none	+\$0
BK	black	+\$0
NH	brushed nickel	+\$0

Sink Cabinet with Door and Drawer Front

CG643.
CG644.



Product Information

Description

This 24"-wide cabinet has a base cabinet bottom with a foot pedal cutout, a medium-size drawer front, a door and adjustable glides. Cabinet height without work surface adjusts from 34" to 35½" high.

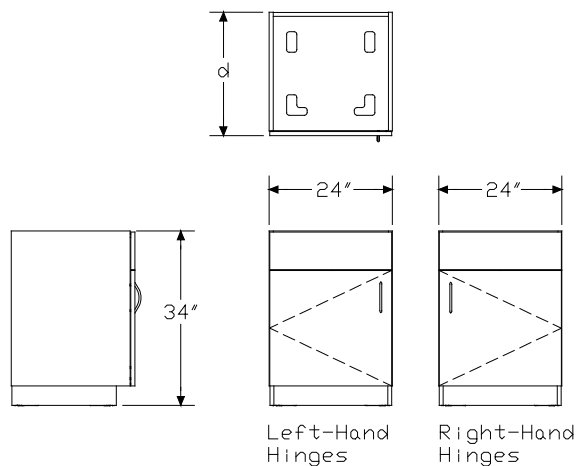
Notes

Order Corian® work surface (CG212. or CG219.) separately.

Sink must be customer supplied and field installed.

For keyed-alike locks, order lock plugs separately. See Keyed-Alike Information in Appendices.

Dimensions



Specification Information

Step 1.

CG64

Step 2. Hinge Location

- 3.** left-hand hinges
- 4.** right-hand hinges

Step 3. Depth

- 1824** 18" deep
- 2424** 24" deep
- 3024** 30" deep

Step 4. Lock

- N** no lock
- L** keyed differently
- K** keyed alike

Prices for Steps 1-4.

	N	L	K
CG643. 1824	\$1058	1124	1124
2424	\$1117	1185	1185
3024	\$1216	1282	1282
CG644. 1824	\$1058	1124	1124
2424	\$1117	1185	1185
3024	\$1338	1282	1282

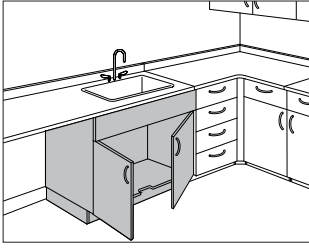
Step 5. Surface Finish

HF	inner tone light	+\$0
LT	light tone	+\$0
LU	soft white	+\$0
WN	warm grey neutral	+\$0
76	light brown walnut	+\$80
91	white	+\$80
HM	natural maple	+\$80
HX	aged cherry	+\$80
OG	honey maple	+\$120

Step 6. Pull Option/Finish

NN	none	+\$0
BK	black	+\$0
NH	brushed nickel	+\$0

Sink Cabinet with Double Doors and Drawer Front CG642.



Product Information

Description

This cabinet has a base cabinet bottom with a foot pedal cutout, a medium-size drawer front, 2 doors and adjustable glides. Cabinet height without work surface adjusts from 34" to 35 1/2" high.

Notes

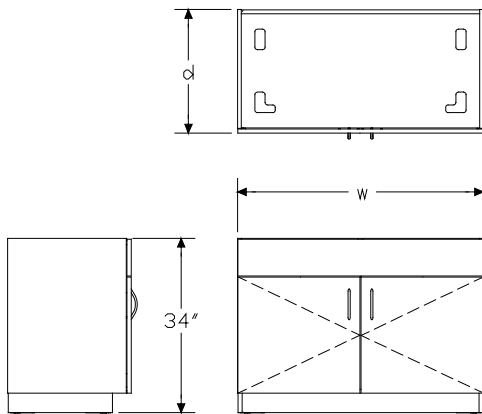
Order Corian® work surface separately:

- Corner work surface (CG219.) for 30"-wide sink cabinet only
- Work surface (CG212.)

Sink must be customer supplied and field installed.

For keyed-alike locks, order lock plugs separately. See Keyed-Alike Information in Appendices.

Dimensions



Specification Information

Step 1.

CG642.

Step 2. Depth

24	24" deep
30	30" deep

Step 3. Width

30	30" wide
36	36" wide
48	48" wide

Step 4. Lock

N	no lock
L	keyed differently
K	keyed alike

Prices for Steps 1-4.

	N	L	K
CG642. 24 30	\$1271	1335	1335
36	\$1496	1561	1561
48	\$1558	1623	1623
30 30	\$1435	1500	1500
36	\$1605	1668	1668
48	\$1671	1738	1738

Step 5. Surface Finish

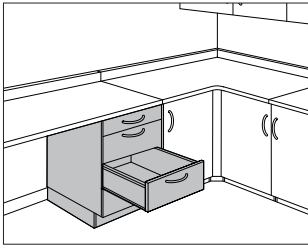
HF	inner tone light	+\$0
LT	light tone	+\$0
LU	soft white	+\$0
WN	warm grey neutral	+\$0
76	light brown walnut	+\$120
91	white	+\$120
HM	natural maple	+\$120
HX	aged cherry	+\$120
OG	honey maple	+\$180

Step 6. Pull Option/Finish

NN	none	+\$0
BK	black	+\$0
NH	brushed nickel	+\$0

ADA Base Cabinet with Drawers

CG800.
CG801.



Product Information

Description

This cabinet has 4 drawers and adjustable glides. Cabinet height without work surface adjusts from 32" to 33½" high.

Notes

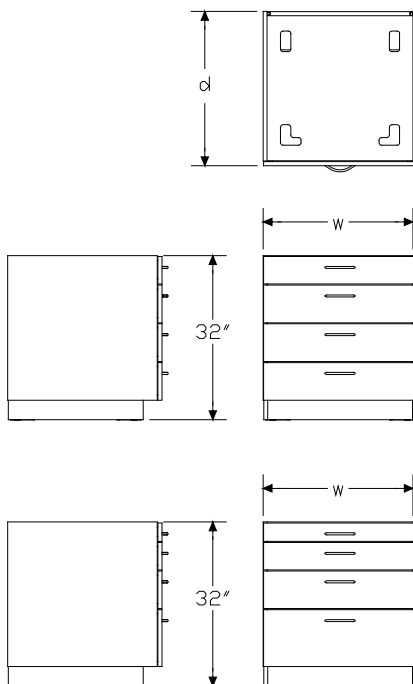
Order work surface (CG211. or CG212.) or corner work surface (CG218. or CG219.) separately.

Height conforms to guidelines of Americans with Disability Act (ADA).

For keyed differently lock option (L), all 4 drawers have independent locks.

For keyed-alike locks (K), order lock plugs separately. See Keyed-Alike Information in Appendices.

Dimensions



Specification Information

Step 1.

CG80

Step 2. Configuration

- 0. 4 drawers: 1 small, 3 medium
- 1. 4 drawers: 2 small, 1 medium, 1 large

Step 3. Depth

- 18 18" deep
- 24 24" deep

Step 4. Width

- 18 18" wide
- 24 24" wide
- 30 30" wide

Step 5. Lock

- N no lock
- L keyed differently
- K keyed alike

Prices for Steps 1-5.

	N	L	K
CG800. 18 18	\$1676	1923	1923
24	\$1906	2149	2149
30	\$2168	2413	2413
24 18	\$1715	1958	1958
24	\$1935	2181	2181
30	\$2190	2433	2433
CG801. 18 18	\$1676	1923	1923
24	\$1906	2149	2149
30	\$2168	2413	2413
24 18	\$1715	1958	1958
24	\$1935	2181	2181
30	\$2190	2433	2433

ADA Base Cabinet with Drawers

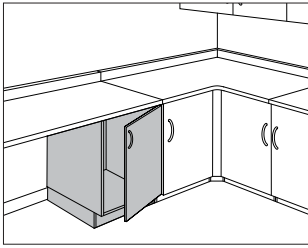
continued

Casework Base Cabinets

Step 6. Surface Finish		
HF	inner tone light	+\$0
LT	light tone	+\$0
LU	soft white	+\$0
WN	warm grey neutral	+\$0
76	light brown walnut	+\$150
91	white	+\$150
HM	natural maple	+\$150
HX	aged cherry	+\$150
OG	honey maple	+\$225
Step 7. Pull Option/Finish		
NN	none	+\$0
BK	black	+\$0
NH	brushed nickel	+\$0

ADA Base Cabinet with Door

CG802.
CG803.



Product Information

Description

This cabinet has a shelf and a door and adjustable glides. The shelf is height adjustable in $1\frac{1}{4}$ " increments. Cabinet height without work surface adjusts from 32" to 33 $\frac{1}{2}$ " high.

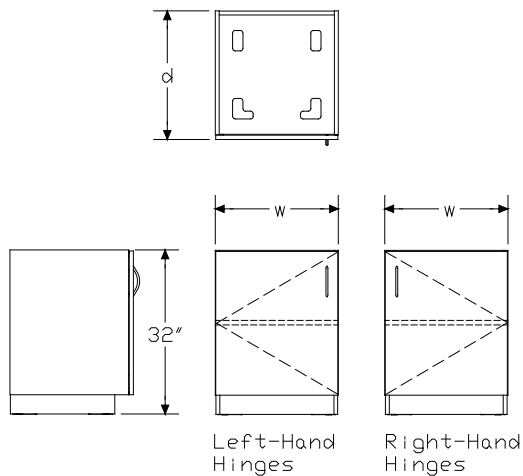
Notes

Order work surface (CG211. or CG212.) or corner work surface (CG218. or CG219.) separately.

Height conforms to guidelines of Americans with Disability Act (ADA).

For keyed-alike locks, order lock plugs separately. See Keyed-Alike Information in Appendices.

Dimensions



Specification Information

Step 1.

CG80

Step 2. Hinge Location

2. left-hand hinges
3. right-hand hinges

Step 3. Depth

- | | |
|-----------|----------|
| 18 | 18" deep |
| 24 | 24" deep |

Step 4. Width

- | | |
|-----------|----------|
| 18 | 18" wide |
| 24 | 24" wide |

Step 5. Lock

- | | |
|----------|-------------------|
| N | no lock |
| L | keyed differently |
| K | keyed alike |

Prices for Steps 1-5.

	N	L	K
CG802. 18 18	\$974	1040	1040
24	\$1093	1161	1161
24 18	\$1056	1123	1123
24	\$1188	1255	1255
CG803. 18 18	\$974	1040	1040
24	\$1093	1161	1161
24 18	\$1056	1123	1123
24	\$1188	1255	1255

Step 6. Surface Finish

HF	inner tone light	+\$0
LT	light tone	+\$0
LU	soft white	+\$0
WN	warm grey neutral	+\$0
76	light brown walnut	+\$80
91	white	+\$80
HM	natural maple	+\$80
HX	aged cherry	+\$80
OG	honey maple	+\$120

ADA Base Cabinet with Door

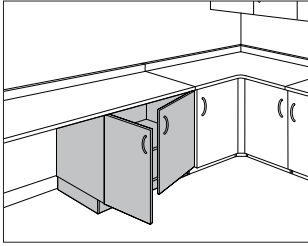
continued

Casework Base Cabinets

Step 7. Pull Option/Finish		
NN	none	+\$0
BK	black	+\$0
NH	brushed nickel	+\$0

ADA Base Cabinet with Double Doors

CG804.



Product Information

Description

This 30"-wide cabinet has a shelf and 2 doors and adjustable glides. The shelf is height adjustable in 1 $\frac{1}{4}$ " increments. Cabinet height without work surface adjusts from 32" to 33 $\frac{1}{2}$ " high.

Notes

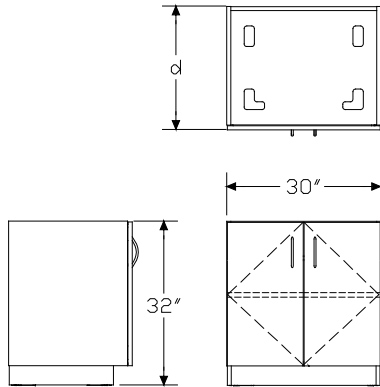
Order work surface (CG211. or CG212.) or corner work surface (CG218. or CG219.) separately.

Height conforms to guidelines of Americans with Disability Act (ADA).

Double doors with lock option are controlled by 1 lock.

For keyed-alike locks, order lock plugs separately. See Keyed-Alike Information in Appendices.

Dimensions



Specification Information

Step 1.

CG804.

Step 2. Depth

1830 18" deep

2430 24" deep

Step 3. Lock

N no lock

L keyed differently

K keyed alike

Prices for Steps 1-3.

	N	L	K
CG804. 1830	\$1145	1206	1206
2430	\$1245	1306	1306

Step 4. Surface Finish

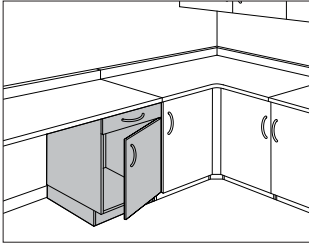
HF	inner tone light	+\$0
LT	light tone	+\$0
LU	soft white	+\$0
WN	warm grey neutral	+\$0
76	light brown walnut	+\$80
91	white	+\$80
HM	natural maple	+\$80
HX	aged cherry	+\$80
OG	honey maple	+\$120

Step 5. Pull Option/Finish

NN	none	+\$0
BK	black	+\$0
NH	brushed nickel	+\$0

ADA Base Cabinet with Drawer and Door

CG805.
CG806.



Product Information

Description

This cabinet has a small drawer, a shelf, a door and adjustable glides. The shelf is height adjustable in $1\frac{1}{4}$ " increments. Cabinet height without work surface adjusts from 32" to 33 $\frac{1}{2}$ " high.

Notes

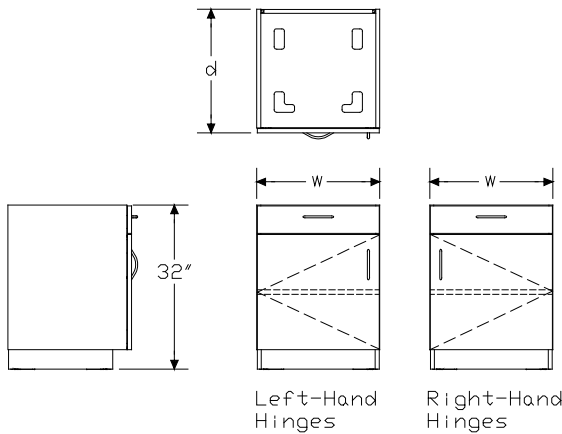
Order work surface (CG211. or CG212.) or corner work surface (CG218. or CG219.) separately.

Height conforms to guidelines of Americans with Disability Act (ADA).

Base cabinet with lock includes lock on drawer and door.

For keyed-alike locks, order lock plugs separately. See Keyed-Alike Information in Appendices.

Dimensions



Specification Information

Step 1.

CG80

Step 2. Hinge Location

- 5. left-hand hinges
- 6. right-hand hinges

Step 3. Depth

- 18 18" deep
- 24 24" deep

Step 4. Width

- 18 18" wide
- 24 24" wide

Step 5. Lock

- N no lock
- L keyed differently
- K keyed alike

Prices for Steps 1-5.

	N	L	K
CG805. 18 18	\$1143	1263	1263
24	\$1253	1374	1374
24 18	\$1212	1336	1336
24	\$1342	1463	1463
CG806. 18 18	\$1143	1263	1263
24	\$1253	1374	1374
24 18	\$1212	1336	1336
24	\$1342	1463	1463

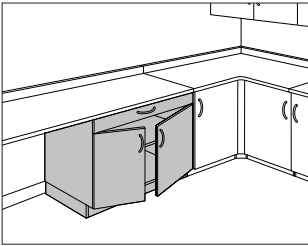
Step 6. Surface Finish

HF	inner tone light	+\$0
LT	light tone	+\$0
LU	soft white	+\$0
WN	warm grey neutral	+\$0
76	light brown walnut	+\$90
91	white	+\$90
HM	natural maple	+\$90
HX	aged cherry	+\$90
OG	honey maple	+\$135

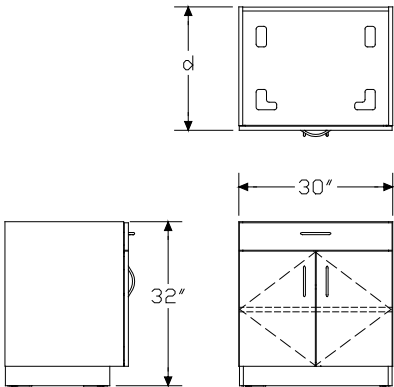
ADA Base Cabinet with Drawer
and Door *continued*

Step 7. Pull Option/Finish		
NN	none	+\$0
BK	black	+\$0
NH	brushed nickel	+\$0

ADA Base Cabinet with Drawer and Double Doors CG807.



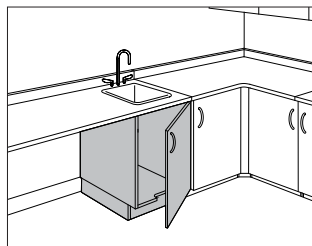
Product Information
<p>Description</p> <p>This 30"-wide cabinet has a small drawer, a shelf, 2 doors and adjustable glides. The shelf is height adjustable in 1¹/₄" increments. Cabinet height without work surface adjusts from 32" to 33¹/₂" high.</p>
<p>Notes</p> <p>Order work surface (CG211. or CG212.) or corner work surface (CG218. or CG219.) separately.</p> <p>Height conforms to guidelines of Americans with Disability Act (ADA).</p> <p>Base cabinet with lock includes lock on drawer and both doors.</p> <p>For keyed-alike locks, order lock plugs separately. See Keyed-Alike Information in Appendices.</p>
<p>Dimensions</p>



Specification Information			
Step 1.			
CG807.			
Step 2. Depth			
1830	18" deep		
2430	24" deep		
Step 3. Lock			
N	no lock		
L	keyed differently		
K	keyed alike		
Prices for Steps 1-3.			
	N	L	K
CG807. 1830	\$1517	1638	1638
2430	\$1623	1744	1744
Step 4. Surface Finish			
HF	inner tone light		+\$0
LT	light tone		+\$0
LU	soft white		+\$0
WN	warm grey neutral		+\$0
76	light brown walnut		+\$120
91	white		+\$120
HM	natural maple		+\$120
HX	aged cherry		+\$120
OG	honey maple		+\$180
Step 5. Pull Option/Finish			
NN	none		+\$0
BK	black		+\$0
NH	brushed nickel		+\$0

ADA Sink Cabinet with Door

CG808.
CG809.



Product Information

Description

This 24"-wide cabinet has a base cabinet bottom with a foot pedal cutout, a door and adjustable glides. Cabinet height without work surface adjusts from 32" to 33½" high.

Notes

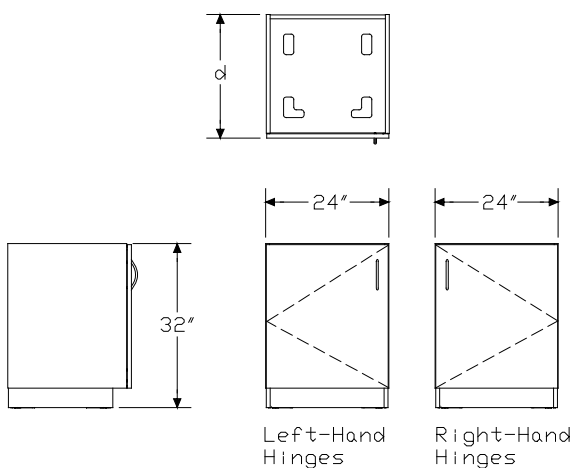
Order Corian® work surface (CG212. or CG219.) separately.

Sink must be customer supplied and field installed.

Height conforms to guidelines of Americans with Disability Act (ADA).

For keyed-alike locks, order lock plugs separately. See Keyed-Alike Information in Appendices.

Dimensions



Specification Information

Step 1.

CG80

Step 2. Hinge Location

- 8. left-hand hinges
- 9. right-hand hinges

Step 3. Depth

- 1824 18" deep
- 2424 24" deep

Step 4. Lock

- N no lock
- L keyed differently
- K keyed alike

Prices for Steps 1-4.

	N	L	K
CG808. 1824	\$1032	1099	1099
2424	\$1092	1161	1161
CG809. 1824	\$1032	1099	1099
2424	\$1092	1161	1161

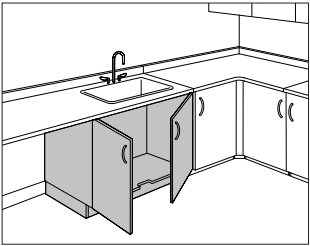
Step 5. Surface Finish

HF	inner tone light	+\$0
LT	light tone	+\$0
LU	soft white	+\$0
WN	warm grey neutral	+\$0
76	light brown walnut	+\$80
91	white	+\$80
HM	natural maple	+\$80
HX	aged cherry	+\$80
OG	honey maple	+\$120

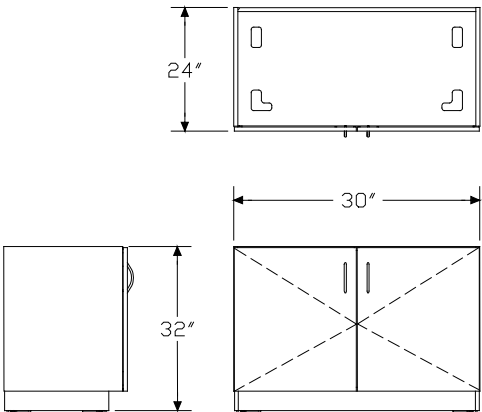
Step 6. Pull Option/Finish

NN	none	+\$0
BK	black	+\$0
NH	brushed nickel	+\$0

ADA Sink Cabinet with Double Doors CG810.



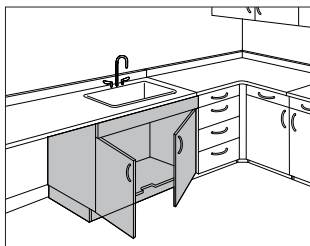
Product Information
Description This 24"-deep, 30"-wide cabinet has a base cabinet bottom with a foot pedal cutout, 2 doors and adjustable glides. Cabinet height without work surface adjusts from 32" to 33½" high.
Notes Order Corian® work surface separately: • Corner work surface (CG219.) for 30"-wide sink cabinet only • Work surface (CG212.) Sink must be customer supplied and field installed. Height conforms to guidelines of Americans with Disability Act (ADA). For keyed-alike locks, order lock plugs separately. See Keyed-Alike Information in Appendices.
Dimensions



Specification Information
Step 1. CG810.2430
Step 2. Lock N no lock L keyed differently K keyed alike
Prices for Steps 1-2. CG810.2430 N \$1214 L \$1283 K \$1283
Step 3. Surface Finish HF inner tone light +\$0 LT light tone +\$0 LU soft white +\$0 WN warm grey neutral +\$0 76 light brown walnut +\$90 91 white +\$90 HM natural maple +\$90 HX aged cherry +\$90 OG honey maple +\$135
Step 4. Pull Option/Finish NN none +\$0 BK black +\$0 NH brushed nickel +\$0

ADA Sink Cabinet with Double Doors and Drawer Front

CG813.



Product Information

Description

This 24"-deep cabinet has a base cabinet bottom with a foot pedal cutout, a small-size drawer front, 2 doors and adjustable glides. Cabinet height without work surface adjusts from 32" to 33½" high.

Notes

Order Corian® work surface separately:

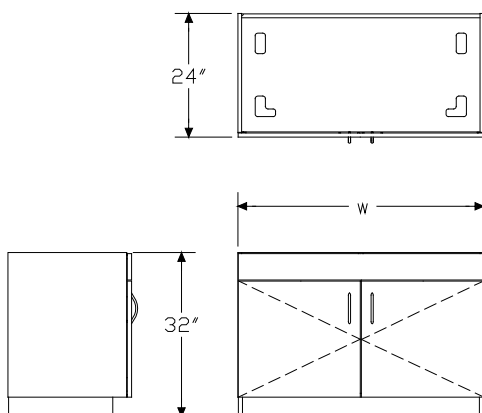
- Corner work surface (CG219.) for 30"-wide sink cabinet only
- Work surface (CG212.)

Sink must be customer supplied and field installed.

Height conforms to guidelines of Americans with Disability Act (ADA).

For keyed-alike locks, order lock plugs separately. See Keyed-Alike Information in Appendices.

Dimensions



Specification Information

Step 1.

CG813.24

Step 2. Width

30 30" wide

48 48" wide

Step 3. Lock

N no lock

L keyed differently

K keyed alike

Prices for Steps 1-3.

		N	L	K
CG813.24	30	\$1315	1384	1384
	48	\$1617	1686	1686

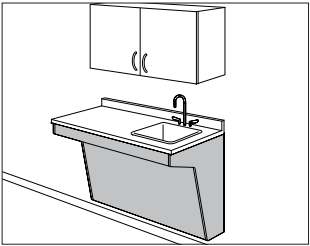
Step 4. Surface Finish

HF	inner tone light	+\$0
LT	light tone	+\$0
LU	soft white	+\$0
WN	warm grey neutral	+\$0
76	light brown walnut	+\$100
91	white	+\$100
HM	natural maple	+\$100
HX	aged cherry	+\$100
OG	honey maple	+\$150

Step 5. Pull Option/Finish

NN	none	+\$0
BK	black	+\$0
NH	brushed nickel	+\$0

ADA Sink Support, Wall Mounted CG508.



Casework Base Cabinets

Product Information

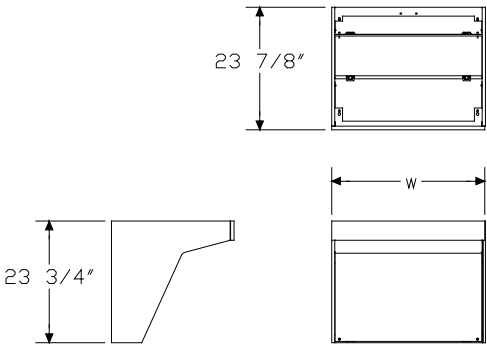
Description

This 24"-deep sink support hangs from an architectural wall. It supports a 5½"-deep sink and a work surface. The sink support has a 4"-high laminate front trim and a removable front panel to allow access to plumbing. Shipped knocked down.

Notes

Order Corian® work surface (CG212.) separately.
Sink must be customer supplied and field installed. A Just SL-ADA-1921-A-GR-3 sink, with drain located in rear center, fits in a 24" × 24" sink support.

Dimensions



Specification Information

Step 1.

CG508.24

Step 2. Width

24	24" wide
30	30" wide
48	48" wide
60	60" wide

Prices for Steps 1-2.

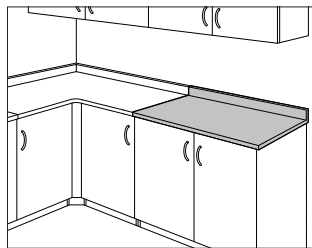
CG508.24	24	\$1285
	30	\$1376
	48	\$1651
	60	\$1837

Step 3. Surface Finish

HF	inner tone light	+\$0
LT	light tone	+\$0
LU	soft white	+\$0
WN	warm grey neutral	+\$0
76	light brown walnut	+\$100
91	white	+\$100
HM	natural maple	+\$100
HX	aged cherry	+\$100
OG	honey maple	+\$150

Work Surface

CG211.



Product Information

Description

This work surface attaches to the top of 1 or more base cabinets or hangs from an architectural wall and abuts the side of a base cabinet. It has a laminate or Chemsurf® top and includes a backsplash.

Notes

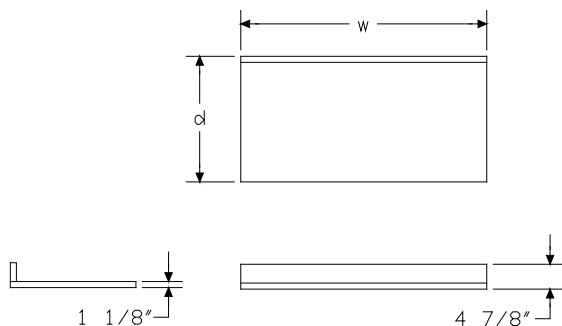
Order base cabinet (CG502., CG602., CG604., CG608., CG609., CG614., CG625., CG626., or CG627.) separately.

Order ADA base cabinet (CG800., CG801., CG802., CG803., CG804., CG805., CG806., CG807., or CG814.) separately.

For work surface attached to wall, order work surface support (CG509.) separately.

For work surface exposed to moisture, use Corian® work surface (CG212.).

Dimensions



Specification Information

Step 1.

CG211.

Step 2. Depth

18	18" deep
24	24" deep
30	30" deep

Step 3. Width

24	24" wide
30	30" wide
36	36" wide
42	42" wide
48	48" wide
60	60" wide
72	72" wide
96	96" wide

Step 4. Surface Material

L	laminate
C	Chemsurf®

Prices for Steps 1-4.

		L	C
CG211. 18	24	\$230	281
	30	\$277	343
	36	\$343	424
	42	\$383	477
	48	\$440	548
	60	\$560	696
	72	\$666	829
	96	\$886	1105
24	24	\$287	335
	30	\$346	412
	36	\$428	508
	42	\$479	573
	48	\$548	654
	60	\$699	833
	72	\$833	996
	96	\$1107	1326

Casework Work Surfaces

30	24	\$346	396
30		\$433	500
36		\$516	594
42		\$603	698
48		\$699	804
60		\$857	993
72		\$998	1162
96		\$1301	1517

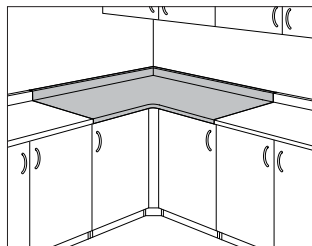
Step 5. Surface Finish

<i>For laminate (L)</i>			
HF	inner tone light		+\$0
LT	light tone		+\$0
LU	soft white		+\$0
WN	warm grey neutral		+\$0
91	white		+\$85

<i>For Chemsurf® (C)</i>			
JD	warm grey neutral Chemsurf®		+\$0
KH	light tone Chemsurf®		+\$0
KR	inner tone light Chemsurf®		+\$0
LE	soft white Chemsurf®		+\$0

Corner Work Surface

CG218.



Product Information

Description

This corner work surface attaches to the top of 1 or more base cabinets or hangs from an architectural wall. It has a laminate or Chemsurf® top and includes a backsplash.

Notes

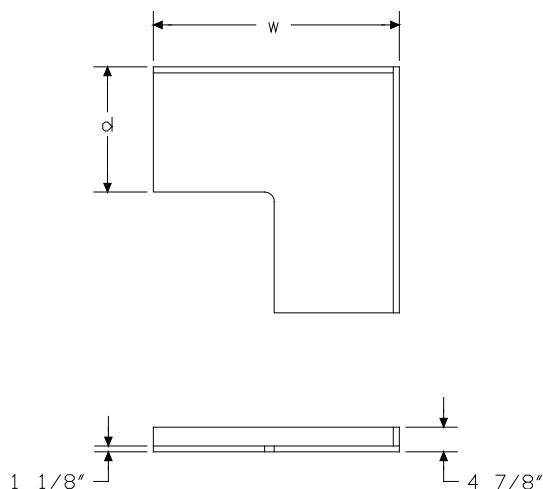
Order base cabinet (CG502., CG602., CG604., CG608., CG609., CG614., CG625., CG626., or CG627.) separately.

Order ADA base cabinet (CG800., CG801., CG802., CG803., CG804., CG805., CG806., CG807., or CG814.) separately.

For work surface attached to wall, order work surface support (CG509.) separately.

For corner work surface exposed to moisture, use Corian® work surface (CG219.).

Dimensions



Specification Information

Step 1.

CG218.

Step 2. Depth/Width

1848 18" deep x 48" wide

2448 24" deep x 48" wide

3060 30" deep x 60" wide

Step 3. Surface Material

L laminate

C Chemsurf®

Prices for Steps 1-3.

	L	C
CG218. 1848	\$781	860
2448	\$1015	1116
3060	\$1404	1545

Step 4. Surface Finish

For laminate (L)

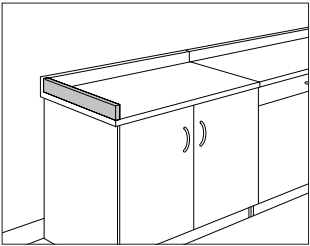
HF	inner tone light	+\$0
LT	light tone	+\$0
LU	soft white	+\$0
WN	warm grey neutral	+\$0
91	white	+\$85

For Chemsurf® (C)

JD	warm grey neutral Chemsurf®	+\$0
KH	light tone Chemsurf®	+\$0
KR	inner tone light Chemsurf®	+\$0
LE	soft white Chemsurf®	+\$0

Sidesplash

CG296.



Product Information

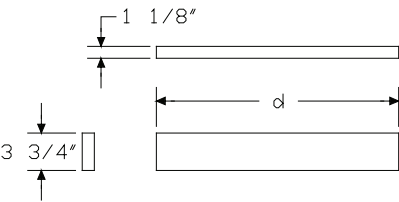
Description

This laminate or Chemsurf® product completes a work surface backsplash at the end of a run of base cabinets.

Notes

Order work surface (CG211.) or corner work surface (CG218.) separately.
Height of sidesplash with work surface is 47/8" from bottom of work surface.

Dimensions



Specification Information

Step 1.

CG296.

Step 2. Depth

18	18" deep
24	24" deep
30	30" deep

Step 3. Surface Material

L	laminate
C	Chemsurf®

Prices for Steps 1-3.

	L	C
CG296. 18	\$96	115
24	\$153	180
30	\$185	201

Step 4. Surface Finish

For laminate (L)

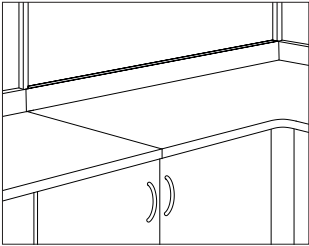
HF	inner tone light	+\$0
LT	light tone	+\$0
LU	soft white	+\$0
WN	warm grey neutral	+\$0
91	white	+\$15

For Chemsurf® (C)

JD	warm grey neutral Chemsurf®	+\$0
KH	light tone Chemsurf®	+\$0
KR	inner tone light Chemsurf®	+\$0
LE	soft white Chemsurf®	+\$0

Backsplash Filler

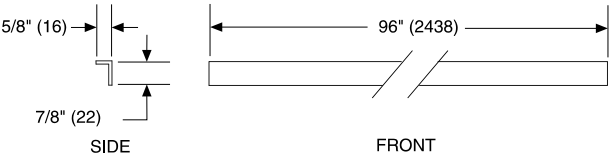
C2920.

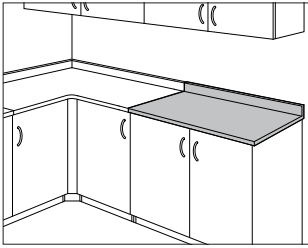


Product Information
Description
This component attaches to a Casework work surface. It fills the gap created when Casework base cabinets are placed against terminal panels or wall strips. Package contains 6. Attachment hardware is included.
Notes
Order work surface (CG211. or CG212.) or corner work surface (CG218. or CG219.) separately.
Dimensions

Specification Information		
Step 1.		
C2920.96		\$148
Step 2. Surface Finish		
HF	inner tone light	+\$0
LT	light tone	+\$0
LU	soft white	+\$0
WN	warm grey neutral	+\$0

Casework Work Surfaces





Product Information

Description

This Corian work surface attaches to the top of 1 or more base cabinets or hangs from an architectural wall and abuts the side of a base cabinet. It includes a backsplash.

Notes

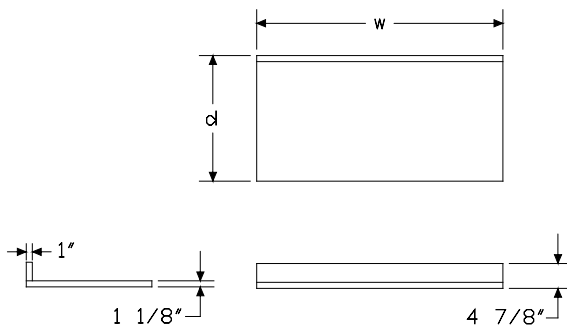
Work surface has a matte gloss level.

Order cabinet separately:

- Base cabinet (CG502., CG602., CG604., CG608., CG609., CG614., CG625., CG626., or CG627.)
- ADA base cabinet or sink cabinet (CG800., CG801., CG802., CG803., CG804., CG805., CG806., CG807., CG808., CG809., CG810., CG813., or CG814.)
- Sink cabinet (CG635., CG636., CG637., CG642., CG643., or CG644.)
- Wall-mounted ADA sink support (CG508.)

For work surface attached to wall, order work surface support (CG509.) separately.

Dimensions



Specification Information

Step 1.

CG212.

Step 2. Depth

18	18" deep
24	24" deep
30	30" deep

Step 3. Width

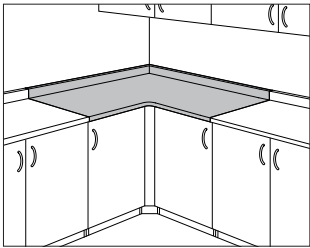
24	24" wide
30	30" wide
36	36" wide
42	42" wide
48	48" wide
60	60" wide
72	72" wide
96	96" wide

Prices for Steps 1-3.

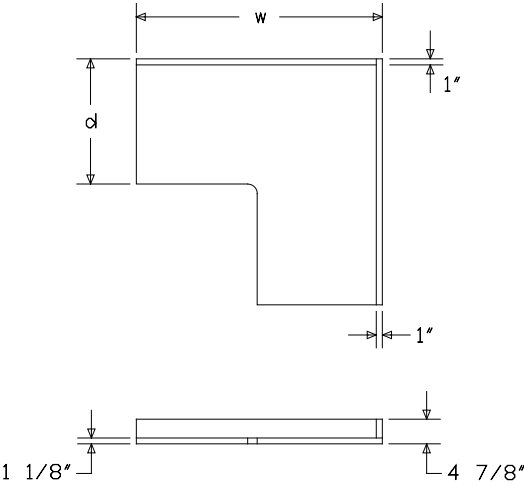
	24	30	36	42	48	60
CG212. 18	\$1419	1651	1885	2121	2355	2822
24	\$1614	1876	2136	2400	2660	3184
30	\$1808	2099	2388	2676	2965	3545
					72	96
CG212. 18					\$3290	4230
24					\$3707	4755
30					\$4121	5279

Step 4. Surface Finish

1N	canyon	+\$200
CQ	glacier white	+\$0
QB	bisque	+\$0
1E	flint	+\$320
1S	savannah	+\$200
1U	sahara	+\$200
3I	mojave	+\$200
4I	sandstone	+\$200
58	cameo white	+\$0
IQ	aurora	+\$200
OQ	silt	+\$200
Q1	vanilla	+\$0
7I	raffia	+\$320
BLP	blue pebble A	+\$540

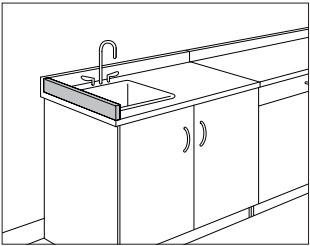


Product Information
Description
This Corian corner work surface with a backsplash attaches to the top of 1 or more base cabinets or hangs from an architectural wall and abuts the side of a base cabinet.
Notes
Order base cabinet (CG502., CG602., CG604., CG608., CG609., CG614., CG625., CG626., or CG627.) separately.
Order ADA base cabinet (CG800., CG801., CG802., CG803., CG804., CG805., CG806., CG807., CG808., CG809., CG810., CG813., or CG814.) separately.
For work surface attached to wall, order work surface support (CG509.) separately.
Surface has a matte gloss level.
Dimensions



Specification Information
Step 1.
CG219.
Step 2. Depth/Width
1848 18" deep x 48" wide
2448 24" deep x 48" wide
3060 30" deep x 60" wide
Prices for Steps 1-2.
CG219. 1848 \$2988
2448 \$3287
3060 \$4456
Step 3. Surface Finish
1N canyon +\$300
CQ glacier white +\$0
QB bisque +\$0
1E flint +\$540
1S savannah +\$300
1U sahara +\$300
3I mojave +\$300
4I sandstone +\$300
58 cameo white +\$0
IQ aurora +\$300
OQ silt +\$300
Q1 vanilla +\$0
7I raffia +\$540
BLP blue pebble <input type="checkbox"/> A +\$540

Corian® SidesplashCG297.

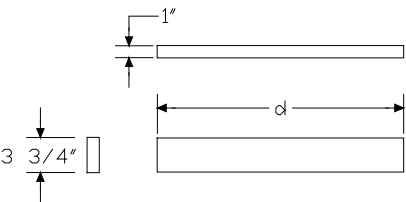


Product Information

Description
This Corian product completes a work surface backsplash at the end of a run of base cabinets.

Notes
Sidesplash has a matte gloss level.
Order Corian work surface (CG212.) or Corian corner work surface (CG219.) separately.
Height of sidesplash with work surface is 47/8" from bottom of work surface.

Dimensions



Specification Information

Step 1.

CG297.

Step 2. Depth

- 18 18" deep
- 24 24" deep
- 30 30" deep

Prices for Steps 1-2.

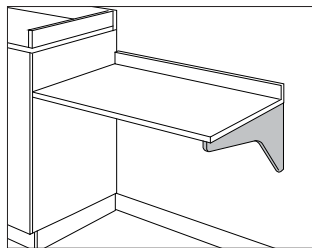
CG297. 18	\$542
24	\$653
30	\$783

Step 3. Surface Finish

1N	canyon	+\$50
CQ	glacier white	+\$0
QB	bisque	+\$0
1E	flint	+\$70
1S	savannah	+\$50
1U	sahara	+\$50
3I	mojave	+\$50
4I	sandstone	+\$50
58	cameo white	+\$0
IQ	aurora	+\$50
OQ	silt	+\$50
Q1	vanilla	+\$0
7I	raffia	+\$70
BLP	blue pebble	+\$70

Work Surface Support

CG509.



Product Information

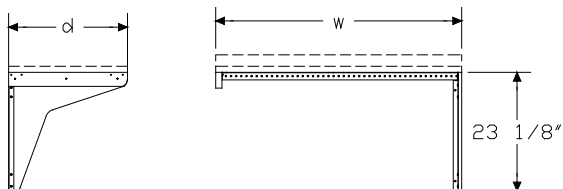
Description

This support bracket holds a work surface or corner work surface that hangs from an architectural wall and abuts the side of a base cabinet.

Notes

Order work surface (CG211. or CG212.) or corner work surface (CG218. or CG219.) separately.

Dimensions



Specification Information

Step 1.

CG509.

Step 2. Depth

18 18" deep

24 24" deep

Step 3. Width

24 24" wide

30 30" wide

36 36" wide

48 48" wide

Prices for Steps 1-3.

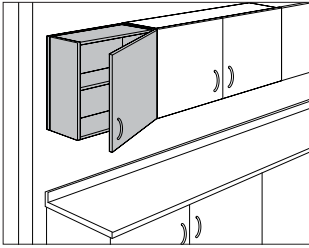
	24	30	36	48
CG509. 18	\$220	226	234	255
24	\$230	236	245	266

Step 4. Surface Finish

HF	inner tone light			+\$0
LT	light tone			+\$0
LU	soft white			+\$0
WN	warm grey neutral			+\$0
91	white			+\$40

Overhead Cabinet with Door

CG301.
CG302.
CG331.
CG332.



Product Information

Description

This 24"-wide cabinet attaches to an architectural wall. It has 1 or 2 shelves and a door. Shelves are height adjustable in 1 $\frac{1}{4}$ " increments.

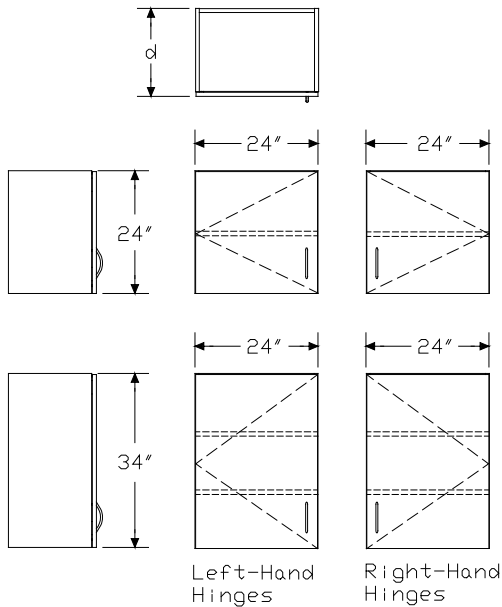
Notes

Order optional products separately:

- Add-on shelf (CG387.)
- Sloped cabinet top (CG396.)

For keyed-alike locks, order lock plugs separately. See Keyed-Alike Information in Appendices.

Dimensions



Specification Information

Step 1.

CG3

Step 2. Configuration/Height

- 0** 1 shelf and 24" high
3 2 shelves and 34" high

Step 3. Hinge Location

- 1.** left-hand hinges
2. right-hand hinges

Step 4. Depth

- 0924** 10 $\frac{1}{2}$ " deep
1624 17" deep

Step 5. Lock

- N** no lock
L keyed differently
K keyed alike

Prices for Steps 1-5.

	N	L	K
CG301. 0924	\$676	736	736
1624	\$951	1011	1011
CG302. 0924	\$676	736	736
1624	\$951	1011	1011
CG331. 0924	\$1042	1096	1096
1624	\$1257	1313	1313
CG332. 0924	\$1042	1096	1096
1624	\$1257	1313	1313

Step 6. Surface Finish

HF	inner tone light	+\$0
LT	light tone	+\$0
LU	soft white	+\$0
WN	warm grey neutral	+\$0
76	light brown walnut	+\$90
91	white	+\$90
HM	natural maple	+\$90
HX	aged cherry	+\$90
OG	honey maple	+\$130

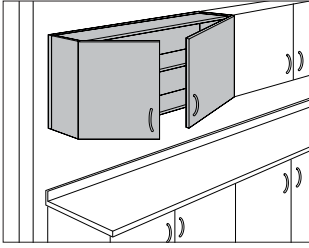
Overhead Cabinet with Door

continued

Step 7. Pull Option/Finish		
NN	none	+\$0
BK	black	+\$0
NH	brushed nickel	+\$0

Overhead Cabinet with Double Doors

CG315.
CG325.



Product Information

Description

This cabinet attaches to an architectural wall. It has 1 or 2 shelves and 2 doors. The shelves are height adjustable in 1/4" increments.

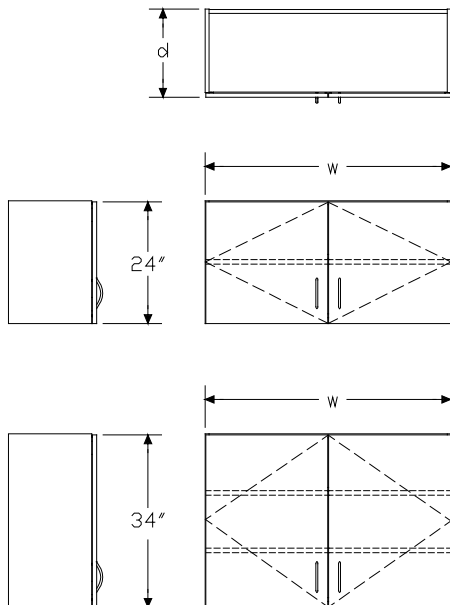
Notes

Order optional products separately:

- Add-on shelf (CG387.)
- Sloped cabinet top (CG396.)

For keyed-alike locks, order lock plugs separately. See Keyed-Alike Information in Appendices.

Dimensions



Specification Information

Step 1.

CG3

Step 2. Configuration/Height

15. 1 shelf and 24" high
25. 2 shelves and 34" high

Step 3. Depth

- 09 10 1/2" deep
16 17" deep

Step 4. Width

- 24 24" wide
30 30" wide
36 36" wide
48 48" wide

Step 5. Lock

- N no lock
L keyed differently
K keyed alike

Prices for Steps 1-5.

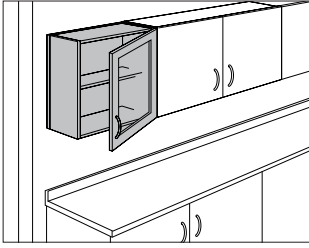
	N	L	K
CG315. 09 24	\$909	967	967
30	\$926	986	986
36	\$995	1054	1054
48	\$1111	1169	1169
16 24	\$1151	1210	1210
30	\$1192	1251	1251
36	\$1281	1340	1340
48	\$1395	1455	1455
CG325. 09 24	\$1006	1066	1066
30	\$1040	1099	1099
36	\$1099	1160	1160
48	\$1225	1283	1283
16 24	\$1198	1258	1258
30	\$1232	1293	1293
36	\$1314	1372	1372
48	\$1469	1528	1528

Overhead Cabinet with Double Doors *continued*

Step 6. Surface Finish		
HF	inner tone light	+\$0
LT	light tone	+\$0
LU	soft white	+\$0
WN	warm grey neutral	+\$0
76	light brown walnut	+\$110
91	white	+\$110
HM	natural maple	+\$110
HX	aged cherry	+\$110
OG	honey maple	+\$150
Step 7. Pull Option/Finish		
NN	none	+\$0
BK	black	+\$0
NH	brushed nickel	+\$0

Overhead Cabinet with Glass Door

CG304.
CG305.
CG334.
CG335.



Product Information

Description

This 24"-wide cabinet attaches to an architectural wall. It has 1 or 2 shelves and a door with a glass insert. Shelves are height adjustable in 1 $\frac{1}{4}$ " increments.

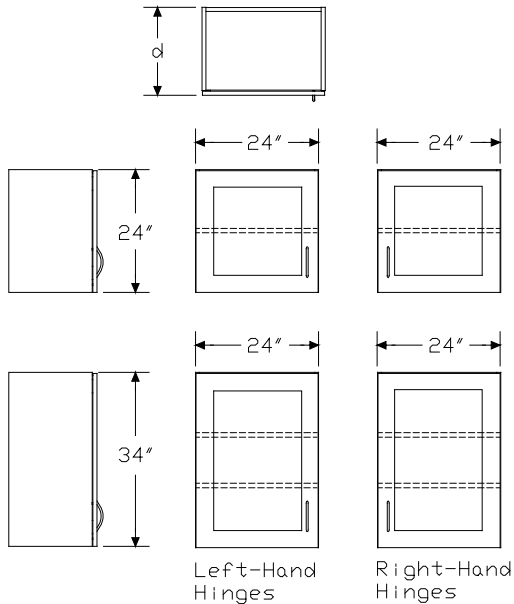
Notes

Order optional products separately:

- Add-on shelf (CG387.)
- Sloped cabinet top (CG396.)

For keyed-alike locks, order lock plugs separately. See Keyed-Alike Information in Appendices.

Dimensions



Specification Information

Step 1.

CG3 ☐

Step 2. Configuration/Height

- 0** 1 shelf and 24" high ☐
- 3** 2 shelves and 34" high ☐

Step 3. Hinge Location

- 4.** left-hand hinges ☐
- 5.** right-hand hinges ☐

Step 4. Depth

- 0924** 10 $\frac{1}{2}$ " deep ☐
- 1624** 17" deep ☐

Step 5. Lock

- N** no lock ☐
- L** keyed differently ☐
- K** keyed alike ☐

Prices for Steps 1-5.

	N	L	K
CG304. 0924	\$957	1027	1027
1624	\$1042	1107	1107
CG305. 0924	\$957	1027	1027
1624	\$1042	1107	1107
CG334. 0924	\$1372	1437	1437
1624	\$1631	1700	1700
CG335. 0924	\$1372	1437	1437
1624	\$1631	1700	1700

Step 6. Surface Finish

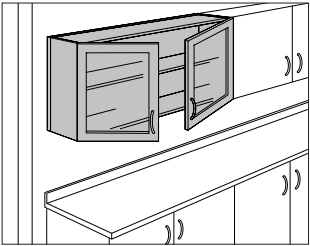
HF	inner tone light <input type="checkbox"/>	+\$0
LT	light tone <input type="checkbox"/>	+\$0
LU	soft white <input type="checkbox"/>	+\$0
WN	warm grey neutral <input type="checkbox"/>	+\$0
76	light brown walnut <input type="checkbox"/>	+\$120
91	white <input type="checkbox"/>	+\$120
HM	natural maple <input type="checkbox"/>	+\$120
HX	aged cherry <input type="checkbox"/>	+\$120
OG	honey maple <input type="checkbox"/>	+\$170

Overhead Cabinet with Glass
Door *continued*

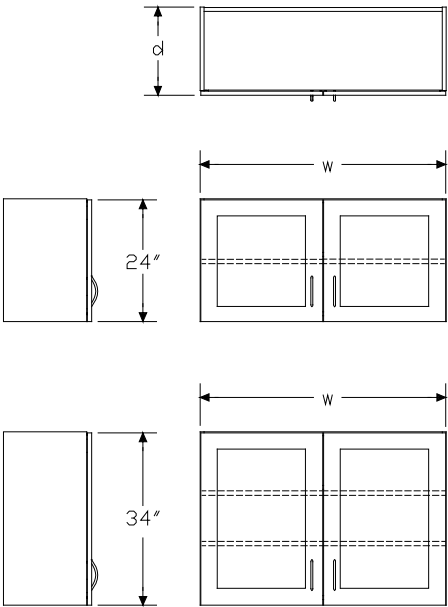
Step 7. Pull Option/Finish		
NN	none <input type="checkbox"/>	+\$0
BK	black <input type="checkbox"/>	+\$0
NH	brushed nickel <input type="checkbox"/>	+\$0

Overhead Cabinet with Double Glass Doors

CG318.
CG328.



Product Information
Description This cabinet attaches to an architectural wall. It has 1 or 2 shelves and 2 doors with glass inserts. The shelves are height adjustable in 1¼" increments.
Notes Order optional products separately: • Add-on shelf (CG387.) • Sloped cabinet top (CG396.) For keyed-alike locks, order lock plugs separately. See Keyed-Alike Information in Appendices.
Dimensions



Specification Information
Step 1. CG3 A
Step 2. Configuration/Height 18. 1 shelf and 24" high A 28. 2 shelves and 34" high A
Step 3. Depth 09 10½" deep A 16 17" deep A
Step 4. Width 30 30" wide A 36 36" wide A 48 48" wide A
Step 5. Lock N no lock A L keyed differently A K keyed alike A

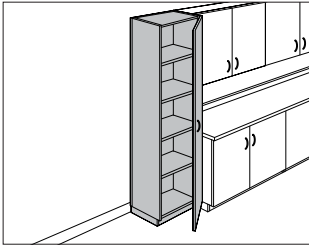
Prices for Steps 1-5.			
	N	L	K
CG318. 09 30	\$1374	1447	1447
36	\$1452	1524	1524
48	\$1583	1654	1654
16 30	\$1471	1541	1541
36	\$1549	1615	1615
48	\$1707	1775	1775
CG328. 09 30	\$1651	1714	1714
36	\$1734	1793	1793
48	\$1890	1951	1951
16 30	\$1900	1961	1961
36	\$1999	2060	2060
48	\$2196	2259	2259

Overhead Cabinet with Double Glass Doors *continued*

Step 6. Surface Finish		
HF	inner tone light <input type="checkbox"/>	+\$0
LT	light tone <input type="checkbox"/>	+\$0
LU	soft white <input type="checkbox"/>	+\$0
WN	warm grey neutral <input type="checkbox"/>	+\$0
76	light brown walnut <input type="checkbox"/>	+\$170
91	white <input type="checkbox"/>	+\$170
HM	natural maple <input type="checkbox"/>	+\$170
HX	aged cherry <input type="checkbox"/>	+\$170
OG	honey maple <input type="checkbox"/>	+\$240
Step 7. Pull Option/Finish		
NN	none <input type="checkbox"/>	+\$0
BK	black <input type="checkbox"/>	+\$0
NH	brushed nickel <input type="checkbox"/>	+\$0

Storage Cabinet with Door

CG700.
CG701.



Product Information

Description

This 80"-high, 24"-wide cabinet with adjustable glides has 4 shelves and a 76"-high door. Shelves are height adjustable in 1 1/4" increments.

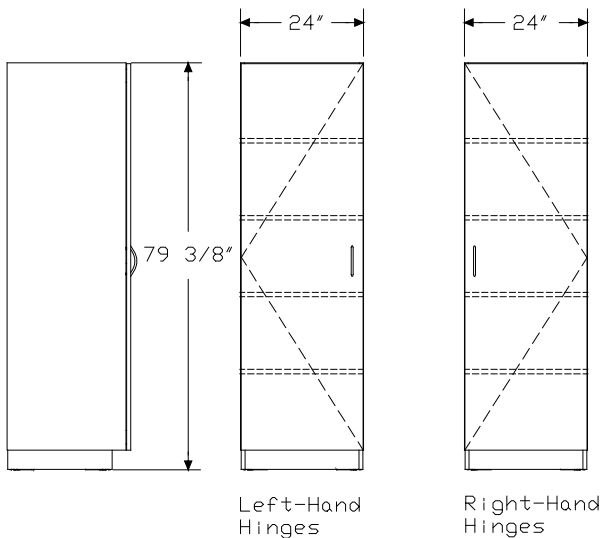
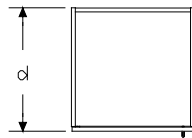
Notes

Order optional products separately:

- Base cabinet shelf (CG516.)
- Sloped cabinet top (CG396.)

For keyed-alike locks, order lock plugs separately. See Keyed-Alike Information in Appendices.

Dimensions



Specification Information

Step 1.

CG70

Step 2. Hinge Location

- 0. left-hand hinges
- 1. right-hand hinges

Step 3. Depth

- 1824 18" deep
- 2424 24" deep

Step 4. Lock

- N no lock
- L keyed differently
- K keyed alike

Prices for Steps 1-4.

	N	L	K
CG700. 1824	\$2265	2324	2324
2424	\$2566	2625	2625
CG701. 1824	\$2265	2324	2324
2424	\$2566	2625	2625

Step 5. Surface Finish

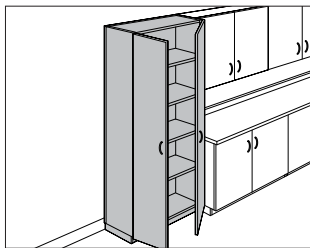
HF	inner tone light	+\$0
LT	light tone	+\$0
LU	soft white	+\$0
WN	warm grey neutral	+\$0
76	light brown walnut	+\$220
91	white	+\$220
HM	natural maple	+\$220
HX	aged cherry	+\$220
OG	honey maple	+\$305

Step 6. Pull Option/Finish

NN	none	+\$0
BK	black	+\$0
NH	brushed nickel	+\$0

Storage Cabinet with Double Doors

CG715.



Product Information

Description

This 80"-high cabinet with adjustable glides has 4 shelves and 2 76"-high doors. The shelves are height adjustable in 1 1/4" increments.

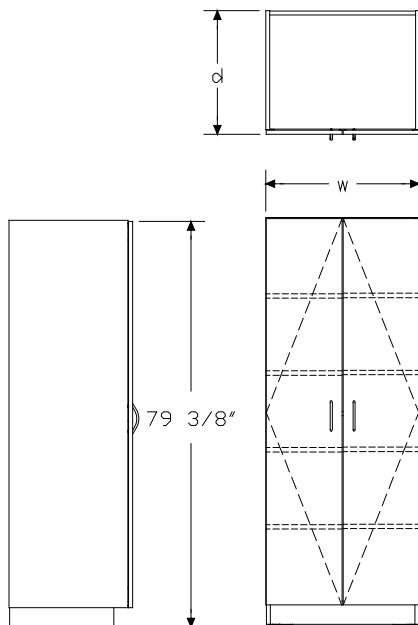
Notes

Order optional products separately:

- Base cabinet shelf (CG516.)
- Sloped cabinet top (CG396.)

For keyed-alike locks, order lock plugs separately. See Keyed-Alike Information in Appendices.

Dimensions



Specification Information

Step 1.

CG715.

Step 2. Depth

18	18" deep
24	24" deep

Step 3. Width

30	30" wide
48	48" wide

Step 4. Lock

N	no lock
L	keyed differently
K	keyed alike

Prices for Steps 1-4.

	N	L	K
CG715. 18 30	\$2324	2384	2384
48	\$3083	3141	3141
24 30	\$2658	2716	2716
48	\$3494	3554	3554

Step 5. Surface Finish

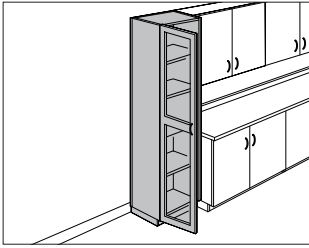
HF	inner tone light	+\$0
LT	light tone	+\$0
LU	soft white	+\$0
WN	warm grey neutral	+\$0
76	light brown walnut	+\$240
91	white	+\$240
HM	natural maple	+\$240
HX	aged cherry	+\$240
OG	honey maple	+\$340

Step 6. Pull Option/Finish

NN	none	+\$0
BK	black	+\$0
NH	brushed nickel	+\$0

Storage Cabinet with Glass Door

CG702.
CG703.



Product Information

Description

This 80"-high, 24"-wide cabinet with adjustable glides has 4 shelves and a 76"-high door with glass inserts. Shelves are height adjustable in 1 1/4" increments.

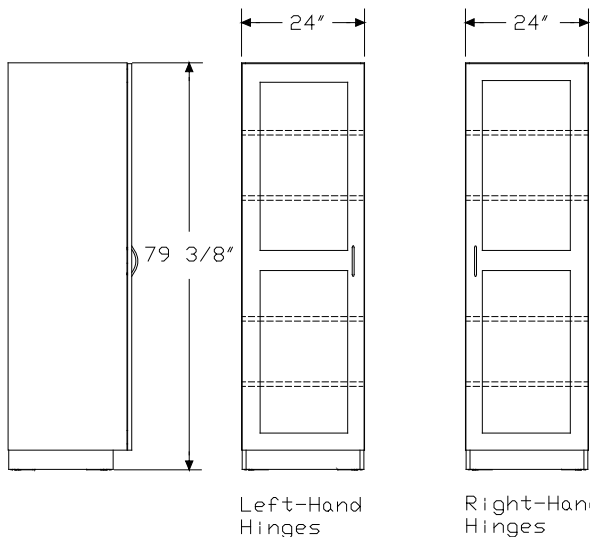
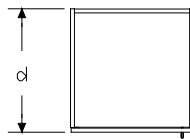
Notes

Order optional products separately:

- Base cabinet shelf (CG516.)
- Sloped cabinet top (CG396.)

For keyed-alike locks, order lock plugs separately. See Keyed-Alike Information in Appendices.

Dimensions



Specification Information

Step 1.

CG70 ☐

Step 2. Hinge Location

- left-hand hinges ☐
- right-hand hinges ☐

Step 3. Depth

- 1824** 18" deep ☐
2424 24" deep ☐

Step 4. Lock

- N** no lock ☐
L keyed differently ☐
K keyed alike ☐

Prices for Steps 1-4.

	N	L	K
CG702. 1824	\$2321	2382	2382
2424	\$2598	2658	2658
CG703. 1824	\$2321	2382	2382
2424	\$2598	2658	2658

Step 5. Surface Finish

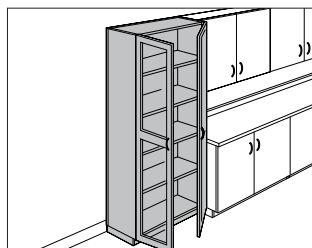
HF	inner tone light <input type="checkbox"/>	+\$0
LT	light tone <input type="checkbox"/>	+\$0
LU	soft white <input type="checkbox"/>	+\$0
WN	warm grey neutral <input type="checkbox"/>	+\$0
76	light brown walnut <input type="checkbox"/>	+\$200
91	white <input type="checkbox"/>	+\$200
HM	natural maple <input type="checkbox"/>	+\$200
HX	aged cherry <input type="checkbox"/>	+\$200
OG	honey maple <input type="checkbox"/>	+\$290

Step 6. Pull Option/Finish

NN	none <input type="checkbox"/>	+\$0
BK	black <input type="checkbox"/>	+\$0
NH	brushed nickel <input type="checkbox"/>	+\$0

Storage Cabinet with Double Glass Doors

CG719.



Product Information

Description

This 80"-high cabinet with adjustable glides has 4 shelves and 2 76"-high doors with glass inserts. The shelves are height adjustable in 1 1/4" increments.

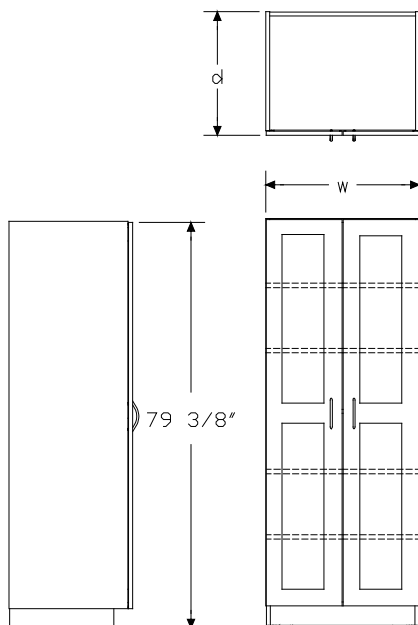
Notes

Order optional products separately:

- Base cabinet shelf (CG516.)
- Sloped cabinet top (CG396.)

For keyed-alike locks, order lock plugs separately. See Keyed-Alike Information in Appendices.

Dimensions



Specification Information

Step 1.

CG719. [A]

Step 2. Depth

18 18" deep [A]

24 24" deep [A]

Step 3. Width

30 30" wide [A]

48 48" wide [A]

Step 4. Lock

N no lock [A]

L keyed differently [A]

K keyed alike [A]

Prices for Steps 1-4.

	N	L	K
CG719. 18 30	\$3132	3190	3190
48	\$3959	4018	4018
24 30	\$3493	3553	3553
48	\$4407	4465	4465

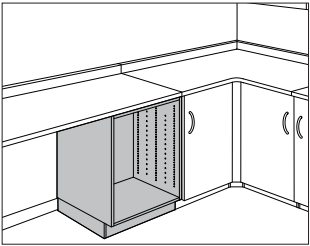
Step 5. Surface Finish

HF	inner tone light [A]	+\$0
LT	light tone [A]	+\$0
LU	soft white [A]	+\$0
WN	warm grey neutral [A]	+\$0
76	light brown walnut [A]	+\$300
91	white [A]	+\$300
HM	natural maple [A]	+\$300
HX	aged cherry [A]	+\$300
OG	honey maple [A]	+\$475

Step 6. Pull Option/Finish

NN	none [A]	+\$0
BK	black [A]	+\$0
NH	brushed nickel [A]	+\$0

Base CabinetCG502.



Product Information

Description

This cabinet has adjustable glides and an open front and can be specified with doors, drawers, and shelves. Cabinet height without work surface adjusts from 34" to 35½" high.

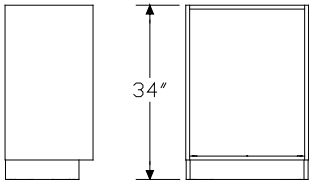
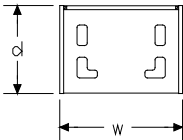
Notes

Order work surface (CG211. or CG212.) or corner work surface (CG218. or CG219.) separately.
Order interior components separately:

- Base cabinet bottle drawer (CG537.)
- Base cabinet drawer (CG532. or CG533.)
- Base cabinet pullout shelf (CG517.)
- Base cabinet shelf (CG516.)
- Interior cabinet adapter (CG591.)
- Waste container holder (CG903.)

To enclose 18"- to 24"-wide cabinet, order base cabinet door (CG538. or CG539.) separately.
To enclose 30"-wide cabinet, order base cabinet double doors (CG548.) separately.
Doors cannot be used in front of cabinet drawers.

Dimensions



Specification Information

Step 1.

CG502.

Step 2. Depth

18

18" deep

24

24" deep

30

30" deep

Step 3. Width

18

18" wide

24

24" wide

30

30" wide

Prices for Steps 1-3.

	18	24	30
CG502. 18	\$649	698	744
24	\$728	781	838
30	\$824	878	930

Step 4. Surface Finish

HF

inner tone light

+\$0

LT

light tone

+\$0

LU

soft white

+\$0

WN

warm grey neutral

+\$0

76

light brown walnut

+\$55

91

white

+\$55

HM

natural maple

+\$55

HX

aged cherry

+\$55

OG

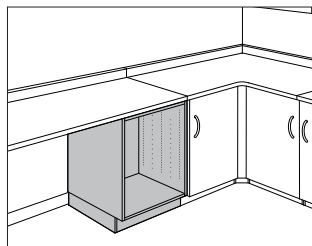
honey maple

+\$80

Casework Base Cabinet Components

ADA Base Cabinet

CG814.



Product Information

Description

This cabinet has adjustable glides and an open front and can be specified with drawers and shelves. Cabinet height without work surface adjusts from 32" to 33½" high.

Notes

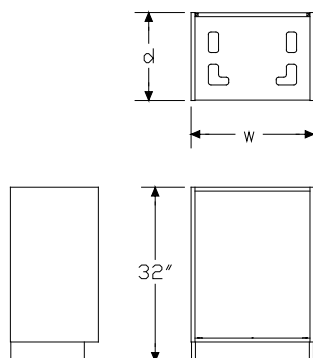
Order work surface (CG211. or CG212.) or corner work surface (CG218. or CG219.) separately.

Height conforms to guidelines of Americans with Disability Act (ADA).

Order interior components separately:

- Base cabinet bottle drawer (CG537.)
- Base cabinet drawer (CG532. or CG533.)
- Base cabinet pullout shelf (CG517.)
- Base cabinet shelf (CG516.)

Dimensions



Specification Information

Step 1.

CG814.

Step 2. Depth

- 18** 18" deep
- 24** 24" deep

Step 3. Width

- 18** 18" wide
- 24** 24" wide
- 30** 30" wide

Prices for Steps 1-3.

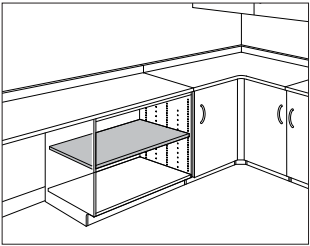
	18	24	30
CG814. 18	\$698	751	801
24	\$783	841	902

Step 4. Surface Finish

HF	inner tone light	+\$0
LT	light tone	+\$0
LU	soft white	+\$0
WN	warm grey neutral	+\$0
76	light brown walnut	+\$50
91	white	+\$50
HM	natural maple	+\$50
HX	aged cherry	+\$50
OG	honey maple	+\$75

Base Cabinet Shelf

CG516.



Product Information

Description

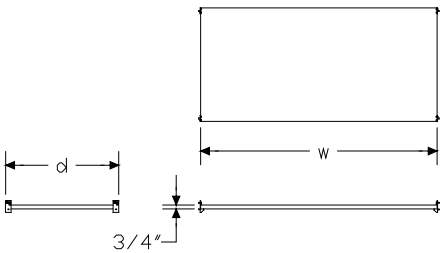
This shelf mounts inside a base cabinet or storage cabinet. It is height adjustable in 1 1/4" increments. Attachment hardware is included.

Notes

Order cabinet separately:

- ADA base cabinet (CG814.)
- Base cabinet (CG502.)
- Storage cabinet (CG716.)

Dimensions



Specification Information

Step 1.

CG516.

Step 2. Depth

- 18** 18" deep
- 24** 24" deep
- 30** 30" deep

Step 3. Width

For 18" deep (18) or 30" deep (30)

- 18** 18" wide
- 24** 24" wide
- 30** 30" wide
- 48** 48" wide

For 24" deep (24)

- 18** 18" wide
- 24** 24" wide
- 30** 30" wide
- 36** 36" wide
- 48** 48" wide

Prices for Steps 1-3.

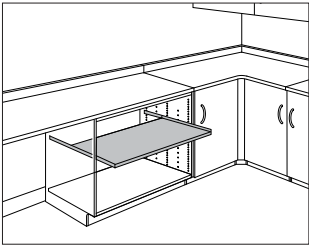
	18	24	30	36	48
CG516. 18	\$157	188	225	—	299
24	\$204	244	281	362	391
30	\$225	266	311	—	444

Step 4. Surface Finish

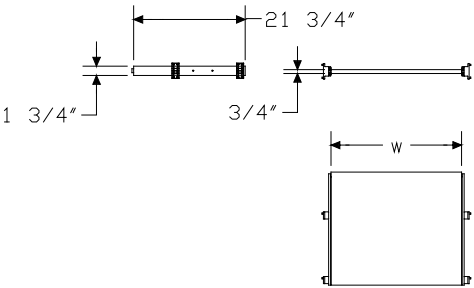
HF	inner tone light	+\$0
LT	light tone	+\$0
LU	soft white	+\$0
WN	warm grey neutral	+\$0
76	light brown walnut	+\$20
91	white	+\$20
HM	natural maple	+\$20
HX	aged cherry	+\$20
OG	honey maple	+\$30

Base Cabinet Pullout Shelf

CG517.



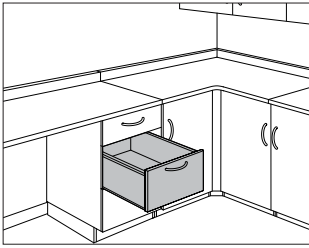
Product Information
Description
This pullout shelf mounts inside a 24"- or 30"-deep base cabinet or 24"-deep storage cabinet. It is height adjustable in 1 1/4" increments. The shelf cannot attach at a door hinge location. Attachment hardware is included.
Notes
Order cabinet separately:
<ul style="list-style-type: none">• ADA base cabinet (CG814.24)• Base cabinet (CG502.24 or CG502.30)• Storage cabinet (CG716.24)
Dimensions



Specification Information
Step 1.
CG517.24
Step 2. Width
18 18" wide
24 24" wide
30 30" wide
36 36" wide
Prices for Steps 1-2.
CG517.24 18 \$362
24 \$427
30 \$484
36 \$560
Step 3. Surface Finish
HF inner tone light +\$0
LT light tone +\$0
LU soft white +\$0
WN warm grey neutral +\$0
76 light brown walnut +\$25
91 white +\$25
HM natural maple +\$25
HX aged cherry +\$25
OG honey maple +\$40

Casework Base Cabinet Components

Base Cabinet Drawer

CG532.
CG533.

Product Information

Description

This drawer mounts inside a base cabinet or storage cabinet. It is available in 3 sizes. Attachment hardware is included.

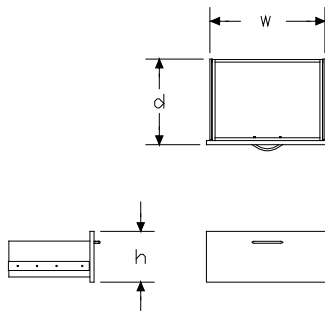
Notes

Order cabinet separately:

- ADA base cabinet (CG814.)
- Base cabinet (CG502.)
- Storage cabinet (CG716.)

For keyed-alike locks, order lock plugs separately. See Keyed-Alike Information in Appendices.

Dimensions



Specification Information

Step 1.

CG53

Step 2. Depth

- 15³/₄" deep
- 21³/₄" deep

Step 3. Height

- 04 small, 5" high
- 08 medium, 7¹/₂" high
- 12 large, 10" high

Step 4. Width

- 18 18" wide
- 24 24" wide
- 30 30" wide

Step 5. Lock

- N no lock
- L keyed differently
- K keyed alike

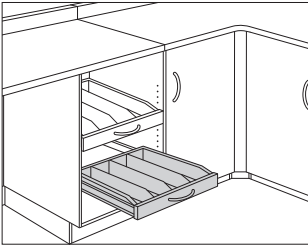
Prices for Steps 1-5.

	N	L	K
CG532. 04 18	\$278	359	359
24	\$325	404	404
30	\$371	449	449
08 18	\$309	390	390
24	\$360	440	440
30	\$412	495	495
12 18	\$344	425	425
24	\$394	479	479
30	\$448	528	528
CG533. 04 18	\$286	366	366
24	\$331	415	415
30	\$379	460	460
08 18	\$315	396	396
24	\$367	448	448
30	\$424	502	502
12 18	\$352	433	433
24	\$402	485	485
30	\$460	540	540

Base Cabinet Drawer *continued*

Step 6. Surface Finish		
HF	inner tone light	+\$0
LT	light tone	+\$0
LU	soft white	+\$0
WN	warm grey neutral	+\$0
76	light brown walnut	+\$30
91	white	+\$30
HM	natural maple	+\$30
HX	aged cherry	+\$30
OG	honey maple	+\$45
Step 7. Pull Option/Finish		
NN	none	+\$0
BK	black	+\$0
NH	brushed nickel	+\$0

Base Cabinet Bottle DrawerCG537.



Product Information

Description

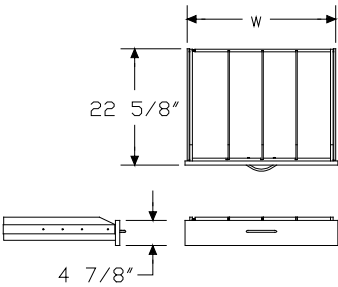
This 6"-high drawer mounts in a base cabinet or storage cabinet. It has a partial-height front for easy access to contents. The drawer is available in 3 widths. The 15⁵/₈"-wide drawer includes 2 dividers; the 21⁵/₈"-wide drawer includes 3 dividers; and the 27⁵/₈"-wide drawer includes 4 dividers. Attachment hardware is included.

Notes

Order cabinet separately:

- ADA base cabinet (CG814.24)
- Base cabinet (CG502.24 or CG502.30)
- Storage cabinet (CG716.24)

Dimensions



Specification Information

Step 1.

CG537.08

Step 2. Width		
18	15 ⁵ / ₈ " wide	
24	21 ⁵ / ₈ " wide	
30	27 ⁵ / ₈ " wide	

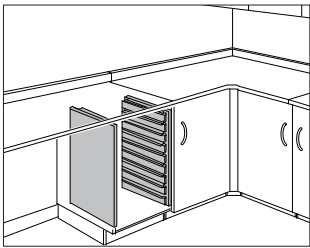
Prices for Steps 1-2.		
CG537.08	18	\$510
	24	\$593
	30	\$678

Step 3. Surface Finish		
HF	inner tone light	+\$0
LT	light tone	+\$0
LU	soft white	+\$0
WN	warm grey neutral	+\$0
76	light brown walnut	+\$40
91	white	+\$40
HM	natural maple	+\$40
HX	aged cherry	+\$40
OG	honey maple	+\$60

Step 4. Pull Option/Finish		
NN	none	+\$0
BK	black	+\$0
NH	brushed nickel	+\$0

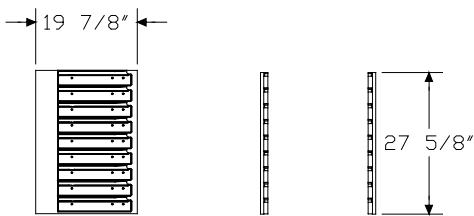
Interior Cabinet Adapter

CG591.



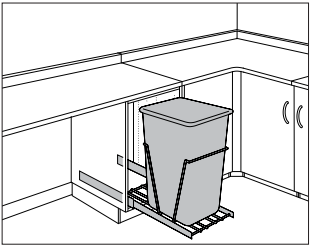
Product Information
Description
This adapter mounts inside a 24"-wide base cabinet. It has 9 slots at 3" intervals to support Co/Struc® storage components and accessories. The adapter can hold lockable drawers. Attachment hardware is included.
Notes
Order base cabinet (CG502.2424) separately.
Order storage components separately:
<ul style="list-style-type: none">• A-, B-, or C-size drawer (CO207, CO208, or CO209)• C tray/shelf (CO203)• C wire shelf (CO252)
Dimensions

Specification Information
Step 1.
CG591.3218
\$912
Step 2. Surface Finish
HF inner tone light
LT light tone
LU soft white
WN warm grey neutral
+\$0
+\$0
+\$0
+\$0



Waste Container Holder

CG903.



Product Information

Description

This holder mounts inside a 24"-deep base cabinet. Finish is white. Wastebasket and attachment hardware are included.

Notes

Order base cabinet (CG502.2424) separately.

Dimensions

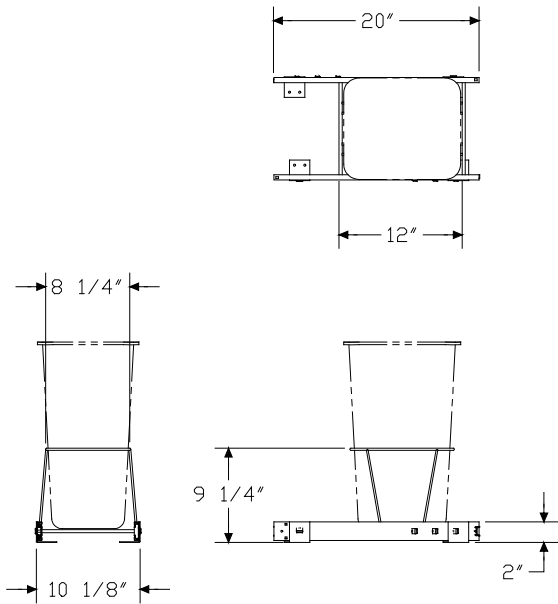
Specification Information

Step 1.

CG903.

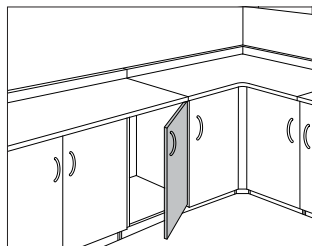
\$514

Casework Base Cabinet Components



Base Cabinet Door

CG538.
CG539.



Product Information

Description

This door encloses a base cabinet. Attachment hardware is included.

Notes

Order base cabinet (CG502.) separately.

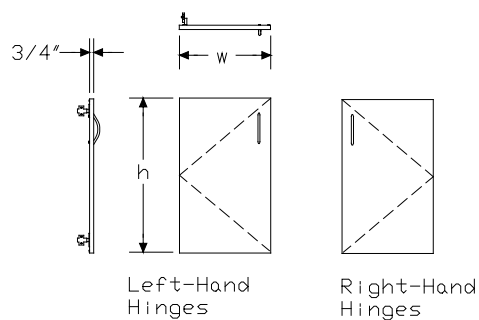
To enclose base cabinet without drawers, specify 30"-high door. To

enclose base cabinet with small drawer, specify 25"-high door. To

enclose base cabinet with medium drawer, specify 22"-high door.

For keyed-alike locks, order lock plugs separately. See Keyed-Alike Information in Appendices.

Dimensions



Specification Information

Step 1.

CG53

Step 2. Hinge Location

8. left-hand hinges

9. right-hand hinges

Step 3. Height

22 22" high

25 25" high

30 30" high

Step 4. Width

18 18" wide

24 24" wide

Step 5. Lock

N no lock

L keyed differently

K keyed alike

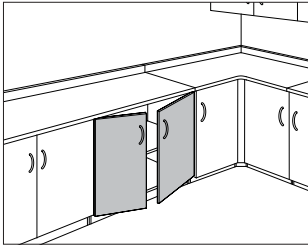
Prices for Steps 1-5.

	N	L	K
CG538. 22 18	\$271	355	355
24	\$344	425	425
25 18	\$305	386	386
24	\$387	467	467
30 18	\$343	424	424
24	\$439	517	517
CG539. 22 18	\$271	355	355
24	\$344	425	425
25 18	\$305	386	386
24	\$387	467	467
30 18	\$343	424	424
24	\$439	517	517

Step 6. Surface Finish		
HF	inner tone light	+\$0
LT	light tone	+\$0
LU	soft white	+\$0
WN	warm grey neutral	+\$0
76	light brown walnut	+\$30
91	white	+\$30
HM	natural maple	+\$30
HX	aged cherry	+\$30
OG	honey maple	+\$45
Step 7. Pull Option/Finish		
NN	none	+\$0
BK	black	+\$0
NH	brushed nickel	+\$0

Base Cabinet Double Doors

CG548.



Product Information

Description

These doors enclose a base cabinet. Attachment hardware is included.

Notes

Order base cabinet (CG502.) separately.

To enclose base cabinet without drawers, specify 30"-high doors. To

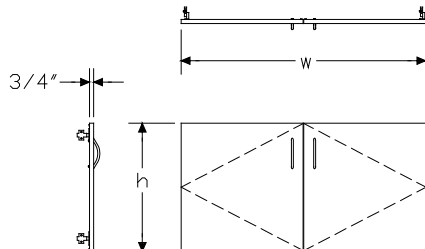
enclose base cabinet with small drawer, specify 25"-high doors. To

enclose base cabinet with medium drawer, specify 22"-high doors.

Double doors with lock option are controlled by 1 lock.

For keyed-alike locks, order lock plugs separately. See Keyed-Alike Information in Appendices.

Dimensions



Specification Information

Step 1.

CG548.

Step 2. Height

22 22" high

25 25" high

30 30" high

Step 3. Width

For 22" high (22) or 30" high (30)

30 30" wide

36 36" wide

48 48" wide

For 25" high (25)

30 30" wide

48 48" wide

Step 4. Lock

N no lock

L keyed differently

K keyed alike

Prices for Steps 1-4.

	N	L	K
CG548. 22 30	\$419	500	500
36	\$532	614	614
48	\$549	630	630
25 30	\$439	517	517
48	\$557	637	637
30 30	\$467	549	549
36	\$637	716	716
48	\$720	800	800

Step 5. Surface Finish

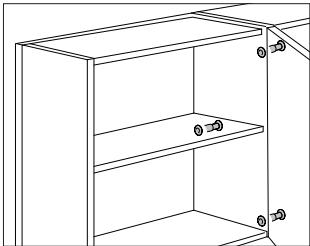
HF	inner tone light	+\$0
LT	light tone	+\$0
LU	soft white	+\$0
WN	warm grey neutral	+\$0
76	light brown walnut	+\$40
91	white	+\$40
HM	natural maple	+\$40
HX	aged cherry	+\$40
OG	honey maple	+\$60

Base Cabinet Double Doors *continued*

Step 6. Pull Option/Finish		
NN	none	+\$0
BK	black	+\$0
NH	brushed nickel	+\$0

Ganging Hardware

CG991.

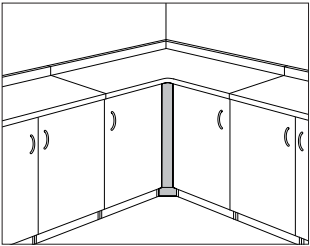


Product Information
Description
This hardware joins 2 side-by-side cabinets and eliminates gaps. 3 fasteners are recommended for each set of cabinet connections. Package contains 50.

Specification Information
Step 1.
CG991.
\$241

Base Cabinet Filler

CG598.
CG599.

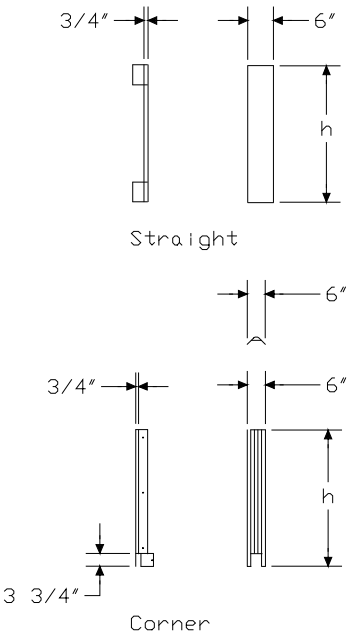


Product Information

Description

This 6"-wide component fills space in a run of base cabinets or storage cabinets. The straight filler fills the space between a run of base cabinets and the wall. The corner filler fills the corner space where 2 runs of base cabinets meet. Attachment hardware is included.

Dimensions



Specification Information

Step 1.

CG59

Step 2. Type

- 8. straight
- 9. corner

Step 3. Height

For straight (8.)

- 34 34" high for ADA base
- 36 36" high for standard base
- 80 80" high for storage cabinets

For corner (9.)

- 34 34" high for ADA base
- 36 36" high for standard base

Prices for Steps 1-3.

CG598. 34	\$267
36	\$277
80	\$469
CG599. 34	\$209
36	\$216

Step 4. Surface Finish

For straight (8.)

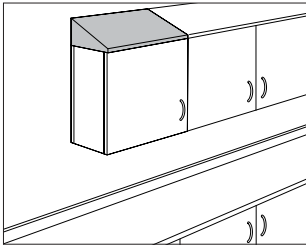
HF	inner tone light	+\$0
LT	light tone	+\$0
LU	soft white	+\$0
WN	warm grey neutral	+\$0
76	light brown walnut	+\$20
91	white	+\$20
HM	natural maple	+\$20
HX	aged cherry	+\$20
OG	honey maple	+\$30

For corner (9.)

HF	inner tone light	+\$0
LT	light tone	+\$0
LU	soft white	+\$0
WN	warm grey neutral	+\$0
91	white	+\$20

Sloped Cabinet Top

CG396.



Product Information

Description

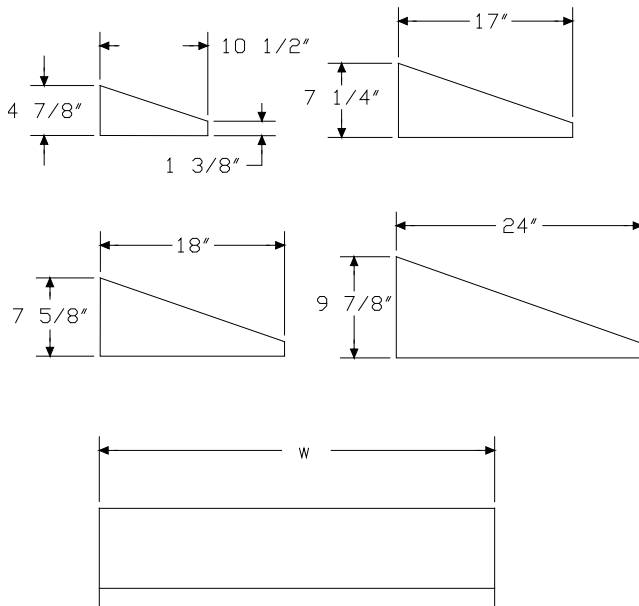
This top attaches to an overhead cabinet or storage cabinet. It is sloped to ease cleaning and prevent the stacking of materials on top of the cabinet. Attachment hardware is included.

Notes

Order 1 of the following support components separately:

- Overhead cabinet with door (CG301., CG302., CG304., CG305., CG331., CG332., CG334., or CG335.)
- Overhead cabinet with double doors (CG315., CG318., CG325., or CG328.)
- Storage cabinet (CG700., CG701., CG702., CG703., CG715., CG716., or CG719.)

Dimensions



Specification Information

Step 1.

CG396.

Step 2. Depth

- 09** 10 1/2" deep
- 16** 17" deep
- 18** 18" deep
- 24** 24" deep

Step 3. Width

For 10 1/2" deep (09) or 17" deep (16)

- 24** 24" wide
- 30** 30" wide
- 36** 36" wide
- 48** 48" wide

For 18" deep (18) or 24" deep (24)

- 24** 24" wide
- 30** 30" wide
- 48** 48" wide

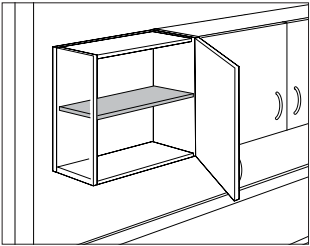
Prices for Steps 1-3.

	24	30	36	48
CG396. 09	\$189	222	253	315
16	\$253	285	315	376
18	\$267	301	—	392
24	\$330	363	—	456

Step 4. Surface Finish

91	white	+\$0
HF	inner tone light	+\$0
LT	light tone	+\$0
LU	soft white	+\$0
WN	warm grey neutral	+\$0

Add-On Shelf, Overhead Cabinet CG387.



Product Information

Description

This shelf fits inside an overhead cabinet and is used as an additional shelf. Attachment hardware is included.

Notes

Order 1 of the following support components separately:

- Overhead cabinet with door (CG301., CG302., CG304., CG305., CG331., CG332., CG334., or CG335.)
- Overhead cabinet with double doors (CG315., CG318., CG325., or CG328.)

Dimensions

Specification Information

Step 1.

CG387.

Step 2. Depth

- 09** 9" deep
16 16" deep

Step 3. Width

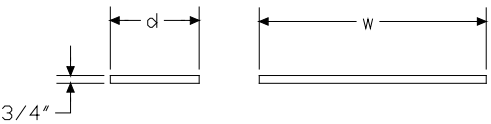
- 24** 22³/₄" wide
30 28³/₄" wide
36 34³/₄" wide
48 46³/₄" wide

Prices for Steps 1-3.

	24	30	36	48
CG387. 09	\$104	107	112	135
16	\$121	129	139	163

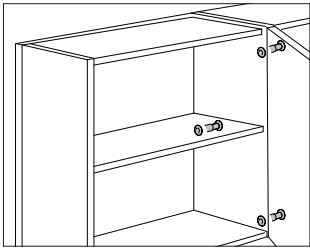
Step 4. Shelf Finish

HF	inner tone light	+\$0
LT	light tone	+\$0
LU	soft white	+\$0
WN	warm grey neutral	+\$0
76	light brown walnut	+\$10
91	white	+\$10
HM	natural maple	+\$10
HX	aged cherry	+\$10
OG	honey maple	+\$15



Ganging Hardware

CG991.

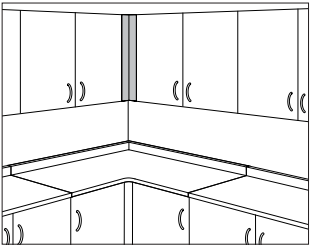


Product Information
Description
This hardware joins 2 side-by-side cabinets and eliminates gaps. 3 fasteners are recommended for each set of cabinet connections. Package contains 50.

Specification Information
Step 1.
CG991.
\$241

Overhead Cabinet Filler

CG398.
CG399.

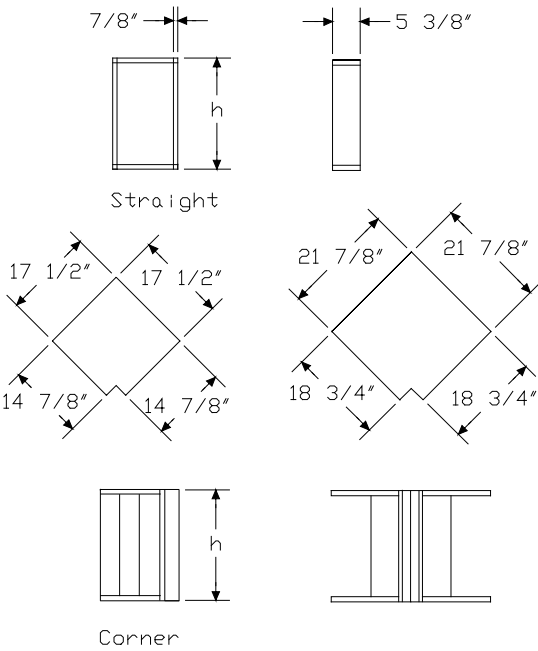


Product Information

Description
This 6"-wide component fills space in a run of overhead cabinets. The straight filler fills the space between a run of overhead cabinets and the wall. The corner filler fills the corner space where 2 runs of overhead cabinets meet. Attachment hardware is included.

Notes
Corner cabinet filler (CG399.) can be used only with cabinets of equal depth.

Dimensions



Specification Information

Step 1.
CG39

Step 2. Type
8. straight
9. corner

Step 3. Height
24 24" high
34 34" high

Step 4. Depth
09 10 1/2" deep
16 17" deep

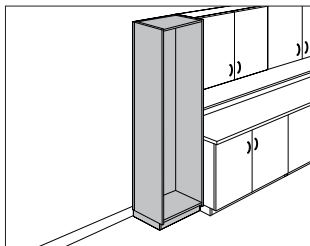
Prices for Steps 1-4.

	09	16
CG398. 24	\$339	374
34	\$407	475
CG399. 24	\$848	933
34	\$1026	1068

Step 5. Surface Finish		
HF	inner tone light	+\$0
LT	light tone	+\$0
LU	soft white	+\$0
WN	warm grey neutral	+\$0
76	light brown walnut	+\$35
91	white	+\$35
HM	natural maple	+\$35
HX	aged cherry	+\$35
OG	honey maple	+\$50

Storage Cabinet

CG716.



Product Information

Description

This 80"-high cabinet with adjustable glides has an open front and can be specified with doors, drawers, and shelves.

Notes

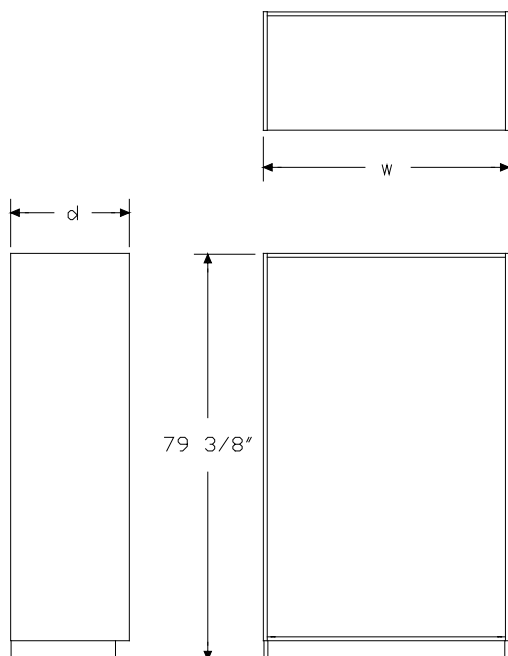
Order interior components separately:

- Base cabinet drawer (CG532. or CG533.)
- Base cabinet shelf (CG516.)
- Distal tube bracket (CV311.)
- Endoscope bracket (CV310.)

To enclose front of cabinet, order storage cabinet door (CG556. or CG557.) or storage cabinet double doors (CG552.) separately. Door cannot be used in front of cabinet drawer.

Order optional sloped cabinet top (CG396.) separately.

Dimensions



Specification Information

Step 1.

CG716.

Step 2. Depth

- 18** 18" deep
- 24** 24" deep

Step 3. Width

- 24** 24" wide
- 30** 30" wide
- 48** 48" wide

Prices for Steps 1-3.

	24	30	48
CG716. 18	\$967	1022	1145
24	\$1137	1200	1347

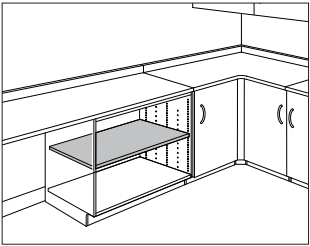
Step 4. Surface Finish

HF	inner tone light	+\$0
LT	light tone	+\$0
LU	soft white	+\$0
WN	warm grey neutral	+\$0
76	light brown walnut	+\$100
91	white	+\$100
HM	natural maple	+\$100
HX	aged cherry	+\$100
OG	honey maple	+\$135

Casework Storage Cabinet Components

Base Cabinet Shelf

CG516.



Product Information

Description

This shelf mounts inside a base cabinet or storage cabinet. It is height adjustable in 1 1/4" increments. Attachment hardware is included.

Notes

Order cabinet separately:

- ADA base cabinet (CG814.)
- Base cabinet (CG502.)
- Storage cabinet (CG716.)

Dimensions

Specification Information

Step 1.

CG516.

Step 2. Depth

18	18" deep
24	24" deep
30	30" deep

Step 3. Width

For 18" deep (18) or 30" deep (30)

18	18" wide
24	24" wide
30	30" wide
48	48" wide

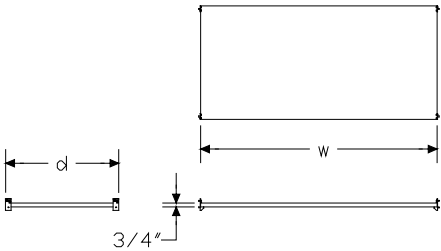
For 24" deep (24)

18	18" wide
24	24" wide
30	30" wide
36	36" wide
48	48" wide

Prices for Steps 1-3.

	18	24	30	36	48
CG516. 18	\$157	188	225	—	299
24	\$204	244	281	362	391
30	\$225	266	311	—	444

Casework Storage Cabinet Components

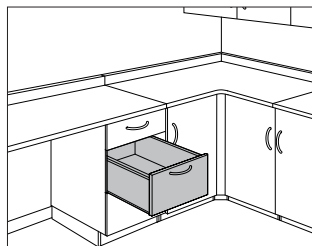


Step 4. Surface Finish

HF	inner tone light	+\$0
LT	light tone	+\$0
LU	soft white	+\$0
WN	warm grey neutral	+\$0
76	light brown walnut	+\$20
91	white	+\$20
HM	natural maple	+\$20
HX	aged cherry	+\$20
OG	honey maple	+\$30

Base Cabinet Drawer

CG532.
CG533.



Product Information

Description

This drawer mounts inside a base cabinet or storage cabinet. It is available in 3 sizes. Attachment hardware is included.

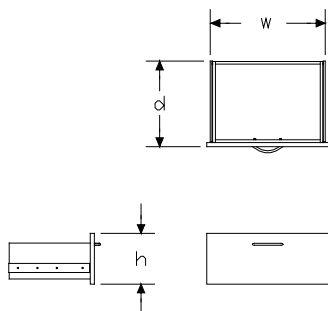
Notes

Order cabinet separately:

- ADA base cabinet (CG814.)
- Base cabinet (CG502.)
- Storage cabinet (CG716.)

For keyed-alike locks, order lock plugs separately. See Keyed-Alike Information in Appendices.

Dimensions



Specification Information

Step 1.

CG53

Step 2. Depth

2. 15³/₄" deep
3. 21³/₄" deep

Step 3. Height

- 04 small, 5" high
- 08 medium, 7¹/₂" high
- 12 large, 10" high

Step 4. Width

- 18 18" wide
- 24 24" wide
- 30 30" wide

Step 5. Lock

- N no lock
- L keyed differently
- K keyed alike

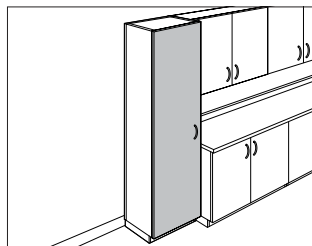
Prices for Steps 1-5.

	N	L	K
CG532. 04 18	\$278	359	359
24	\$325	404	404
30	\$371	449	449
08 18	\$309	390	390
24	\$360	440	440
30	\$412	495	495
12 18	\$344	425	425
24	\$394	479	479
30	\$448	528	528
CG533. 04 18	\$286	366	366
24	\$331	415	415
30	\$379	460	460
08 18	\$315	396	396
24	\$367	448	448
30	\$424	502	502
12 18	\$352	433	433
24	\$402	485	485
30	\$460	540	540

Step 6. Surface Finish		
HF	inner tone light	+\$0
LT	light tone	+\$0
LU	soft white	+\$0
WN	warm grey neutral	+\$0
76	light brown walnut	+\$30
91	white	+\$30
HM	natural maple	+\$30
HX	aged cherry	+\$30
OG	honey maple	+\$45
Step 7. Pull Option/Finish		
NN	none	+\$0
BK	black	+\$0
NH	brushed nickel	+\$0

Storage Cabinet Door

CG556.
CG557.



Product Information

Description

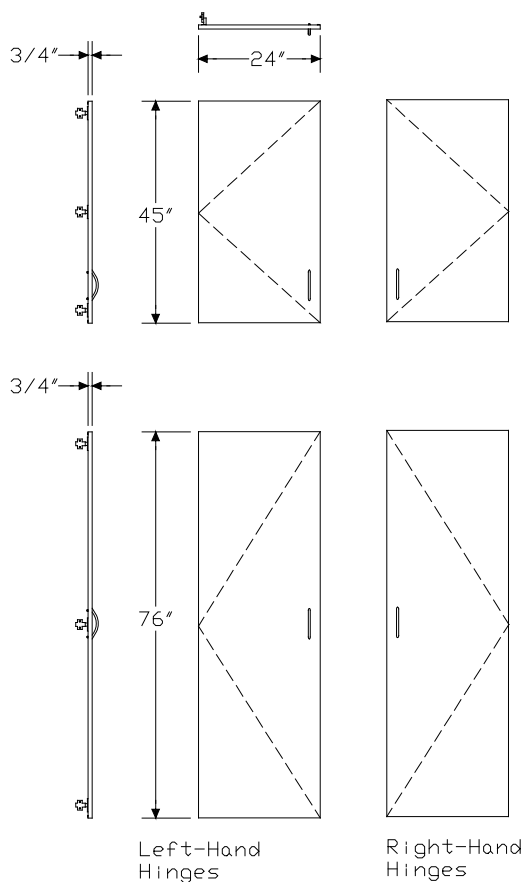
This 24"-wide door encloses a storage cabinet. Attachment hardware is included.

Notes

Order storage cabinet (CG716.) separately.

For keyed-alike locks, order lock plugs separately. See Keyed-Alike Information in Appendices.

Dimensions



Specification Information

Step 1.

CG55

Step 2. Hinge Location

- 6.** left-hand hinges
- 7.** right-hand hinges

Step 3. Height

- 4524** 45" high
- 7624** 76" high

Step 4. Lock

- N** no lock
- L** keyed differently
- K** keyed alike

Prices for Steps 1-4.

	N	L	K
CG556. 4524	\$363	421	421
7624	\$606	664	664
CG557. 4524	\$363	421	421
7624	\$606	664	664

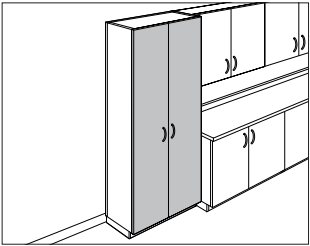
Step 5. Surface Finish

HF	inner tone light	+\$0
LT	light tone	+\$0
LU	soft white	+\$0
WN	warm grey neutral	+\$0
76	light brown walnut	+\$50
91	white	+\$50
HM	natural maple	+\$50
HX	aged cherry	+\$50
OG	honey maple	+\$75

Step 6. Pull Option/Finish

NN	none	+\$0
BK	black	+\$0
NH	brushed nickel	+\$0

Storage Cabinet Double DoorsCG552.



Product Information

Description

These doors enclose a storage cabinet. Attachment hardware is included.

Notes

Order storage cabinet (CG716.) separately.
For keyed-alike locks, order lock plugs separately. See Keyed-Alike Information in Appendices.

Dimensions

Specification Information

Step 1.

CG552.

Step 2. Height

4545" high

7676" high

Step 3. Width

3030" wide

4848" wide

Step 4. Lock

Nno lock

Lkeyed differently

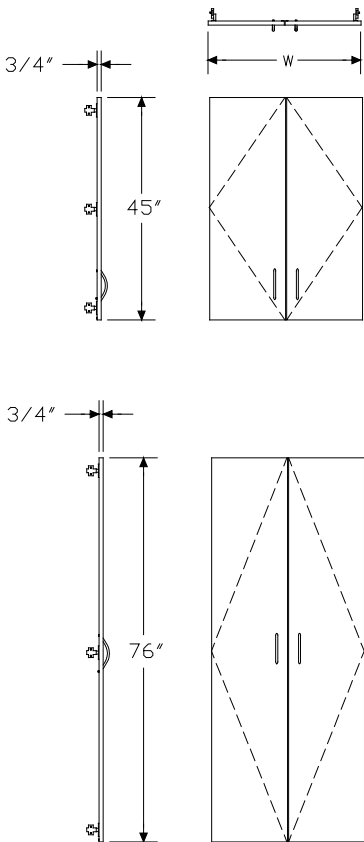
Kkeyed alike

Prices for Steps 1-4.			
	N	L	K
CG552. 45 30	\$666	727	727
48	\$1040	1099	1099
76 30	\$852	910	910
48	\$1330	1390	1390

Step 5. Surface Finish		
HF	inner tone light	+\$0
LT	light tone	+\$0
LU	soft white	+\$0
WN	warm grey neutral	+\$0
76	light brown walnut	+\$70
91	white	+\$70
HM	natural maple	+\$70
HX	aged cherry	+\$70
OG	honey maple	+\$105

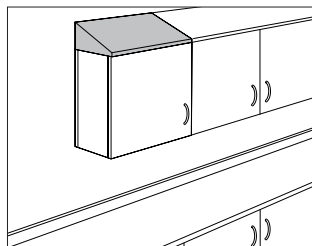
Step 6. Pull Option/Finish		
NN	none	+\$0
BK	black	+\$0
NH	brushed nickel	+\$0

Casework Storage Cabinet Components



Sloped Cabinet Top

CG396.



Product Information

Description

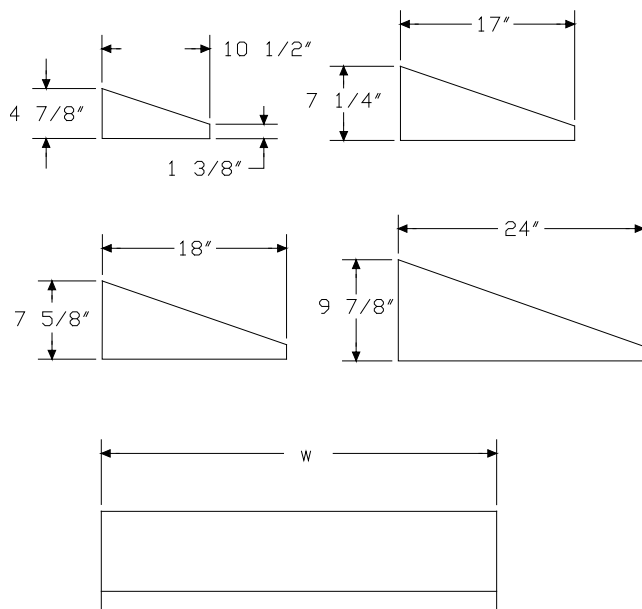
This top attaches to an overhead cabinet or storage cabinet. It is sloped to ease cleaning and prevent the stacking of materials on top of the cabinet. Attachment hardware is included.

Notes

Order 1 of the following support components separately:

- Overhead cabinet with door (CG301., CG302., CG304., CG305., CG331., CG332., CG334., or CG335.)
- Overhead cabinet with double doors (CG315., CG318., CG325., or CG328.)
- Storage cabinet (CG700., CG701., CG702., CG703., CG715., CG716., or CG719.)

Dimensions



Specification Information

Step 1.

CG396.

Step 2. Depth

- 09** 10 1/2" deep
- 16** 17" deep
- 18** 18" deep
- 24** 24" deep

Step 3. Width

For 10 1/2" deep (09) or 17" deep (16)

- 24** 24" wide
- 30** 30" wide
- 36** 36" wide
- 48** 48" wide

For 18" deep (18) or 24" deep (24)

- 24** 24" wide
- 30** 30" wide
- 48** 48" wide

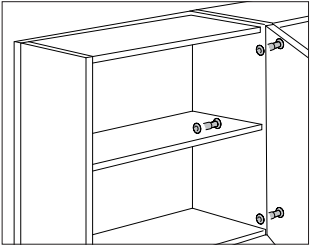
Prices for Steps 1-3.

	24	30	36	48
CG396. 09	\$189	222	253	315
16	\$253	285	315	376
18	\$267	301	—	392
24	\$330	363	—	456

Step 4. Surface Finish

91	white	+\$0
HF	inner tone light	+\$0
LT	light tone	+\$0
LU	soft white	+\$0
WN	warm grey neutral	+\$0

Ganging HardwareCG991.



Product Information

Description

This hardware joins 2 side-by-side cabinets and eliminates gaps. 3 fasteners are recommended for each set of cabinet connections. Package contains 50.

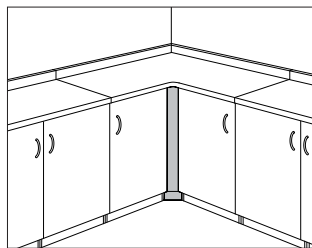
Specification Information

Step 1.

CG991.\$241

Base Cabinet Filler

CG598.
CG599.

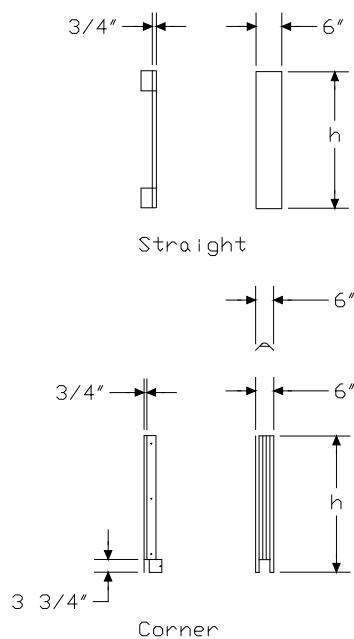


Product Information

Description

This 6"-wide component fills space in a run of base cabinets or storage cabinets. The straight filler fills the space between a run of base cabinets and the wall. The corner filler fills the corner space where 2 runs of base cabinets meet. Attachment hardware is included.

Dimensions



Specification Information

Step 1.

CG59

Step 2. Type

- 8.** straight
- 9.** corner

Step 3. Height

For straight (8.)

- 34** 34" high for ADA base
- 36** 36" high for standard base
- 80** 80" high for storage cabinets

For corner (9.)

- 34** 34" high for ADA base
- 36** 36" high for standard base

Prices for Steps 1-3.

CG598. 34	\$267
36	\$277
80	\$469
CG599. 34	\$209
36	\$216

Step 4. Surface Finish

For straight (8.)

HF	inner tone light	+\$0
LT	light tone	+\$0
LU	soft white	+\$0
WN	warm grey neutral	+\$0
76	light brown walnut	+\$20
91	white	+\$20
HM	natural maple	+\$20
HX	aged cherry	+\$20
OG	honey maple	+\$30

For corner (9.)

HF	inner tone light	+\$0
LT	light tone	+\$0
LU	soft white	+\$0
WN	warm grey neutral	+\$0
91	white	+\$20

Index by Product Name

Casework	
ADA Base Cabinet	page(s) 51
ADA Base Cabinet with Door	19
ADA Base Cabinet with Double Doors	21
ADA Base Cabinet with Drawer and Door	22
ADA Base Cabinet with Drawer and Double Doors	24
ADA Base Cabinet with Drawers	17
ADA Sink Cabinet with Door	25
ADA Sink Cabinet with Double Doors	26
ADA Sink Cabinet with Double Doors and Drawer Front	27
ADA Sink Support, Wall Mounted	28
Add-On Shelf, Overhead Cabinet	66
Backsplash Filler	33
Base Cabinet	50
Base Cabinet Bottle Drawer	56
Base Cabinet Door	59
Base Cabinet Double Doors	61
Base Cabinet Drawer	54, 71
Base Cabinet Filler	64, 77
Base Cabinet Pullout Shelf	53
Base Cabinet Shelf	52, 70
Base Cabinet with Door	7
Base Cabinet with Double Doors	9
Base Cabinet with Drawer and Door	10
Base Cabinet with Drawer and Double Doors	12
Base Cabinet with Drawers	5
Corian® Corner Work Surface	35
Corian® Sidesplash	36
Corian® Work Surface	34
Corner Work Surface	31
Ganging Hardware	63, 67, 76
Interior Cabinet Adapter	57
Overhead Cabinet Filler	68
Overhead Cabinet with Door	38
Overhead Cabinet with Double Doors	40
Overhead Cabinet with Double Glass Doors	44
Overhead Cabinet with Glass Door	42
Sidesplash	32
Sink Cabinet with Door	13
Sink Cabinet with Door and Drawer Front	15
Sink Cabinet with Double Doors	14
Sink Cabinet with Double Doors and Drawer Front	16
Sloped Cabinet Top	65, 75
Storage Cabinet	69
Storage Cabinet Door	73
Storage Cabinet Double Doors	74

Storage Cabinet with Door	46
Storage Cabinet with Double Doors	47
Storage Cabinet with Double Glass Doors	49
Storage Cabinet with Glass Door	48
Waste Container Holder	58
Work Surface	29
Work Surface Support	37



Index by Product Number

C2920. Backsplash Filler	page(s) 33
CG211. Work Surface	29
CG212. Corian® Work Surface	34
CG218. Corner Work Surface	31
CG219. Corian® Corner Work Surface	35
CG296. Sidesplash	32
CG297. Corian® Sidesplash	36
CG301. Overhead Cabinet with Door	38
CG302.	
CG304. Overhead Cabinet with Glass Door	42
CG305.	
CG315. Overhead Cabinet with Double Doors	40
CG318. Overhead Cabinet with Double Glass Doors	44
CG325. Overhead Cabinet with Double Doors	40
CG328. Overhead Cabinet with Double Glass Doors	44
CG331. Overhead Cabinet with Door	38
CG332.	
CG334. Overhead Cabinet with Glass Door	42
CG335.	
CG387. Add-On Shelf, Overhead Cabinet	66
CG396. Sloped Cabinet Top	65, 75
CG398. Overhead Cabinet Filler	68
CG399.	
CG502. Base Cabinet	50
CG508. ADA Sink Support, Wall Mounted	28
CG509. Work Surface Support	37
CG516. Base Cabinet Shelf	52, 70
CG517. Base Cabinet Pullout Shelf	53
CG532. Base Cabinet Drawer	54, 71
CG533.	
CG537. Base Cabinet Bottle Drawer	56
CG538. Base Cabinet Door	59
CG539.	
CG548. Base Cabinet Double Doors	61
CG552. Storage Cabinet Double Doors	74
CG556. Storage Cabinet Door	73
CG557.	
CG591. Interior Cabinet Adapter	57
CG598. Base Cabinet Filler	64, 77
CG599.	
CG602. Base Cabinet with Drawers	5
CG604.	
CG608. Base Cabinet with Door	7
CG609.	
CG614. Base Cabinet with Double Doors	9
CG625. Base Cabinet with Drawer and Double Doors	12



CG626. Base Cabinet with Drawer and Door	10
CG627.	
CG635. Sink Cabinet with Double Doors	14
CG636. Sink Cabinet with Door	13
CG637.	
CG642. Sink Cabinet with Double Doors and Drawer Front	16
CG643. Sink Cabinet with Door and Drawer Front	15
CG644.	
CG700. Storage Cabinet with Door	46
CG701.	
CG702. Storage Cabinet with Glass Door	48
CG703.	
CG715. Storage Cabinet with Double Doors	47
CG716. Storage Cabinet	69
CG719. Storage Cabinet with Double Glass Doors	49
CG800. ADA Base Cabinet with Drawers	17
CG801.	
CG802. ADA Base Cabinet with Door	19
CG803.	
CG804. ADA Base Cabinet with Double Doors	21
CG805. ADA Base Cabinet with Drawer and Door	22
CG806.	
CG807. ADA Base Cabinet with Drawer and Double Doors	24
CG808. ADA Sink Cabinet with Door	25
CG809.	
CG810. ADA Sink Cabinet with Double Doors	26
CG813. ADA Sink Cabinet with Double Doors and Drawer Front	27
CG814. ADA Base Cabinet	51
CG903. Waste Container Holder	58
CG991. Ganging Hardware	63, 67, 76



20-Day or Less/Assigned Lead-Time Order Information – Healthcare

20-Day or Less/Assigned Lead-Time Programs

20-day or less and assigned lead-time products are designed for established Herman Miller dealers with pre-approved credit.

Products are distributed from multiple manufacturing facilities across the United States. All products and options not designated by an Assigned Lead-Time icon  will ship in 20 business days or less after being acknowledged by Herman Miller. Products and options designated by an  are on the assigned lead-time program and will ship in 20 days, less than 20 days, or more than 20 days from order acknowledgement.

Ordering Procedure

Please place orders through Order Manager. If this is not available to you, place orders through mail or fax. Verbal purchase orders will not be accepted.

Order Entry fax number: (616) 654 3085.

For more information, contact your Customer Care representative at: (866) 854 3048 EXT 3400

Shipments and Delivery

Per Herman Miller Terms and Conditions.

Changes and Cancellation

Per Herman Miller Terms and Conditions.



Packaging

Packaging varies according to individual product. A surcharge may be added for special packaging requests. Contact Customer Care for specific information.

Keyed-Alike Locks

All components with locks may be specified keyed alike.

Keyed-alike Casework components will be shipped with lock chassis installed. Lock plugs will be shipped separately, tagged for product and location as specified. Installation of lock plugs will be on-site according to instructions provided. Herman Miller Inc., will not be responsible for lock plug installation.

To order keyed-alike locks for Casework components, specify keyed alike. Then place a separate order for plugs and locks:

1. List plug part number and key number (232092-XXX); select a key number (or numbers) between 226 and 427, excluding numbers 408 and 412.
2. List quantity of locks per key number.
3. Indicate this is a no charge order.

Keyed-alike locks are field installed.

A master key can be used to open any lock on a Casework component. To remove lock plugs from existing components, a removal key (#232228) or lock change tool (#234559) is required. Customers interested in ordering master keys, removal keys, or lock change tools should contact Customer Care with a written request.



For more information about our products and services or to see a list of dealers, please visit us at HermanMiller.com or call (800) 851 1196.

This book is recyclable. Printed in U.S.A. on recycled paper.

© 2017 Herman Miller, Inc., Zeeland, Michigan

® **HermanMiller**, 3D Intelligent, AO, Action Office, Aeron, ArcSpan, Aside, Avall, Avive, Bubble Lamps, Canvas Office Landscape, Caper, Celle, Co/Struc, Daisiyone, Distil, Eames, Eco-Dematerialized, Embody, Envelop, Equa 2, Ergon 3, Ethospace, Exclave, Fine-Tune, FlexFront, Flo, Formcoat, Formwork, Ground Cloth, Herman Miller for the Home, Herman Miller for Healthcare, Intersect, Kinemat, Lapjack, Layout Studio, Lifework, Limerick, Live Unframed, Living Office, Locale, Maharam, Meridian, Mirra, Passage, Pellicle, Perspectives, PostureFit, Public Office Landscape, Resolve, Rodney, Sayl, Setu, Thrive, Tu, Wishbone, and Y-Tower are among the registered trademarks of Herman Miller, Inc., and its owned subsidiaries.

™ 8Z Pellicle, About Face, AireWeave, Albert, Backfit, Bubbletack, Burdick Group, Butterfly Back, Celeste, Cellular Suspension, Clam, Compass, Connect, Cubert, DOT, Duracare, Durawrap, Eames Soft Pad, EnhancedAccess, Everywhere, Flex-Edge, Flute, Harmonic, Herman Miller Select, Hopsak 2, Iota, Jaw, Keyless Entry, Keyn Chair Group by Herman Miller, Latitude, Locale, Logic Mini, Logic Power Access Solutions, Loop, Lyris, Lyris 2, Made-to-Measure Storage, Metaform Portfolio, Motia, Multiscrim, Nelson, Pari, Pixelated Support, Plex, PostureFit SL, Q, Renew, Sense, Soft Pad, Stackable Storage, Striad, Swoop, Tone, TriFlex, Twist, Ubi, and Wireframe are among the trademarks of Herman Miller, Inc., and its owned subsidiaries.

SM Herman Miller Options is among the service marks of Herman Miller, Inc.

Alexander Girard® is a registered trademark of The Alexander Girard Estate.

Chemsurf® is a registered trademark of Wilsonart International.

Corian® is a registered trademark of E. I. du Pont de Nemours and Company Corporation.

Crypton® is a registered trademark of Crypton, Inc.

DACRON® is a registered trademark of INVISTA S.a r.l.

Edelman® Leather is a registered trademark of Edelman Leather, Inc.

FLEXNET™ is a trademark of Milliken & Company.

Floor Saver Glide® is a registered trademark of Carpin Manufacturing, Inc.

Geiger® is a registered trademark, and Bumper™, Saiba™, and Ward Bennett™ are trademarks, of Geiger International.

Goetz™ is a trademark of Mark W. Goetz.

Hang-It-All® is a registered trademark of Lucia Eames Demetrios, d.b.a. Eames Office.

Holophane® is a registered trademark of Holophane.

Ingeo™ is a trademark of Cargill Dow LLC.

iPad® is a registered trademark of Apple, Inc.

LifeSize® is a registered trademark of LifeSize Communications, Inc.

Magis®, Bombo®, and Me Too® are registered trademarks of Magis SpA.

Microsoft® and Natural® Keyboard are registered trademarks of Microsoft Corporation.

Noguchi® and the Noguchi table configuration (trade dress) are registered trademarks, and Rudder Table™ is a trademark, of The Isamu Noguchi Foundation and Garden Museum.

Place Textiles® is a registered trademark of Place Textiles.

SuperSeat™ is a trademark of Dahti Seating, a division of ITW.