



GSA prices effective April 3, 2017
(based on February 1, 2016, commercial price list)
Published April 2017

Laboratory Furniture

Casework

General Services Administration Federal Supply Service Authorized Federal Supply Schedule Price List

Online access to contract ordering information, terms and conditions, up-to-date pricing, and the option to create an electronic delivery order is available through GSA Advantage!, a menu-driven database system. The Internet address for GSA Advantage! is www.gsaadvantage.gov. For more information on ordering from Federal Supply Schedules, click on the FSS Schedules button at www.fss.gsa.gov.

FSC Group 66, Part II, Section N
FSC Classes 6640
Contract Number: GS-07F-5623R
Contract Period: February 1, 2015, through January 31, 2020

Herman Miller, Inc.
855 East Main Avenue
Zeeland, Michigan 49464
(616) 654 3000 Phone
(616) 654 8278 Fax
HermanMiller.com/government

Business Size: Large

Contract Information

1a. Special Item Numbers (SIN)

566-1: Modular Laboratory Furniture Systems, all product except non-modular Laboratory Tables.

566-5: Workstation Design/Installation option. Including:

Workstation Design/Layout Option: Includes the design/redesign of lab furniture. Design service will be provided by Herman Miller, Inc., or its participating dealer based on a fee of \$65 per hour.

Workstation Furniture and Equipment Installation: Includes delivery coordination of furniture and related equipment, unpacking, inspection, inventory and assembly of furniture components. Pricing shall be negotiated on a project-by-project basis.

Workstation Disassembly and Reinstallation Option: Includes the taking down of installed furniture and related hardware for the purpose of packing and moving or storage. Pricing shall be negotiated on a project-by-project basis.

Workstation Repair: Includes the repair and/or replacement of damaged furniture and related hardware. Pricing shall be negotiated on a project-by-project basis.

1b. Lowest Price Model:

566-1 = CG296.18L \$72.00

1c. Not applicable.

2. **Maximum Order.** \$400,000 net product value.

3. **Minimum Order.** \$50 net.

4. **Geographic Coverage.** 48 contiguous states and District of Columbia. Other geographic locations see box below.

5. **Production Points.** Zeeland, Michigan, County of Ottawa.

6. **Pricing.** Prices shown are list. To calculate contract prices, \$0-\$25,000 list, deduct 56%, \$25,001 to MO, deduct 58.5%.

7. **Quantity Discounts.** Reference item #6.

8. **Payment Terms.** Net 30 days.

9a. **Government Purchase Cards.** ARE accepted below the micropurchase threshold.

9b. **Government Purchase Cards.** ARE accepted above the micropurchase threshold.

10. **Foreign Items.** Not applicable.

11a. **Time of Delivery.** 56 days ARO.

11b. **Expedited Delivery.** Select items may be available for expedited delivery. Contact Herman Miller, Inc., or local authorized dealer for availability.

11c. **Overnight and 2-Day Delivery.** Select items may be available for overnight or 2-day delivery. Contact Herman Miller, Inc., or local authorized dealer for availability.

11d. **Urgent Requirements.** Select items may be available for urgent delivery. Contact Herman Miller, Inc., or local authorized dealer for availability.

12. **F.O.B. Point.** Destination within the 48 contiguous states and District of Columbia.

13a. **Order Address.** Herman Miller, Inc., Government Customer Care 0161, 855 East Main Avenue, Zeeland, MI 49464.

13b. **Order Procedures.** For supplies and services, the ordering procedures, information on Blanket Purchase Agreements (BPAs), and a sample BPA can be found at the GSA/FSS Schedule home page (www.fss.gsa.gov/schedules).

14. **Payment Address.** Herman Miller, Inc., 22764 Network Place, Chicago, IL 60673-1227.

15. **Warranty Provisions.** Herman Miller, Inc., commercial warranty applies.

16. **Export Packing Charges.** Prices supplied on request.

17. **Terms and Conditions of Government Commercial Credit Card Acceptance.** None.

18. **Terms and Conditions of Rental, Maintenance, and Repair.** Not applicable.

19. **Terms and Conditions of Installation.** Installation services shall be negotiated between ordering agency and Herman Miller local authorized dealer.

20. **Terms and Conditions of Repair Parts.** Not applicable.

20a. **Terms and Conditions for Any Other Services.** Services shall be negotiated between ordering agency and Herman Miller local authorized dealer.

21. **List of Service and Distribution Points.** Access Herman Miller web site for current list of participating dealers: www.HermanMiller.com.

22. **List of Participating Dealers.** Access Herman Miller web site for current list of participating dealers: www.HermanMiller.com.

23. **Preventive Maintenance.** Not applicable.

24. **Special Attributes.** Reconfigurable, renewable.

25. **DUNS Number.** 0060112801

26. **Registered in Central Contractor Registration (CCR) Database.**
"Herman Miller, Inc."

Herman Miller Miscellaneous Information:

Federal ID Number: 38-0837640

Commercial and Government Entity Code (CAGE): 40636

Introduction	page 2
Casework	3
Base Cabinets	5
Work Surfaces	29
Overhead Cabinets	38
Storage Cabinets	46
Base Cabinet Components	50
Overhead Cabinet Components	65
Storage Cabinet Components	69
Indices	79
By Name	79
By Number	81
Appendices	
20-Day or Less/Assigned Lead-Time Order Information - Healthcare	
Packaging/Keyed-Alike Information-Casework	
For the latest materials information, refer to the Materials pages on	
HermanMiller.com.	

Introduction

A Note on the Organization of This Book

There are a few signals that will help you understand the organization of this book. Once you know them, you should be able to find your way around easily.

Like a newspaper, this book is formatted with columns of text and illustrations that run vertically.

Information wraps from one column to the next and continues for as many pages as it needs to.

Black bars are clues.

A black bar at the top of a page signals the start of information about a product.

This information is divided into two sections, each signaled by a black bar. Product Information includes a description, additional notes, and dimensional drawings. Specification Information, which always begins at the top of a column, includes a series of steps. Each step represents a decision you need to make in order to complete your product number. Steps must be followed sequentially. The number of pages needed to complete information on a product varies; some will be complete in one page; others may fill three or four pages. Just continue going through the steps until you run into the next product, signaled by the black bar at the top of the page.

Black tabs running along the outside edge of the page help you locate what section you are in or what section you want to go to. You can thumb forwards or backwards to find a section; tabs and text appear on both sides of the page.

The additional pages in the back of the book include the appendices and indices. They are signaled by a long black bar running along the outside edge of the page.

The index is presented two ways.

The first index is in alphabetical order by product name. It can be helpful if you are new to the products and numbering scheme or if you are looking for a type of product, such as work chair or round table. The second index is by product number. It lists, in alphanumeric order, the base product number, typically a five-digit number.

General Information

This book is effective April 3, 2017, subject to change without notice. Products may be purchased from authorized Herman Miller dealers who will quote prices upon request. For more information about our products and services or to see a list of dealers, visit www.HermanMiller.com.


All prices are list prices. Additional services, such as planning services, design, storage, and installation, are not included and must be added to these prices when the additional services are requested.


Illustrations, specifications, and prices are based on the latest information at the time of publication. The right is reserved to make changes at any time without notice in prices, fabrics, finishes, materials, specifications, and models, and also to discontinue models and finishes.

Dimensions shown in the drawings are engineering drawing dimensions rounded up to the nearest 1/8". Product is shipped set up or knocked down. Products that include "Shipped knocked down" in the description require some assembly. If this statement does not appear in the description, the product is shipped assembled.

Service problems are normally handled by a Herman Miller authorized dealer. Where this cannot be accomplished on a local level, service problems should be referred to the Customer Care Representative for your region, Herman Miller, Inc., Zeeland, Michigan 49464.

20-Day or Less/Assigned Lead-Time Shipments

All products and options in this price book not designated by an Assigned Program icon  will ship in **20 business days or less** after being acknowledged by Herman Miller.

Products and options designated by an  are on the assigned lead-time program and may ship in 20 days, less than 20 days, or more than 20 days from order acknowledgement.

Base Cabinets

Work Surfaces

Overhead Cabinets

Storage Cabinets

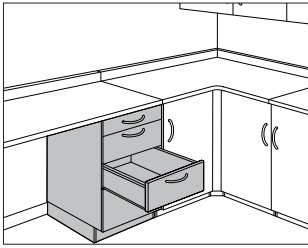
Base Cabinet Components

Overhead Cabinet Components

Storage Cabinet Components

Base Cabinet with Drawers

CG602.
CG604.



Product Information

Description

This cabinet has 4 drawers and adjustable glides. Cabinet height without work surface adjusts from 34" to 35½" high.

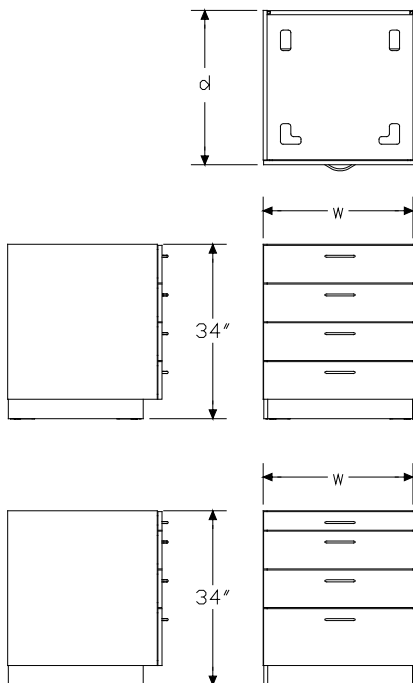
Notes

Order work surface (CG211. or CG212.) or corner work surface (CG218. or CG219.) separately.

For keyed differently lock option (L), all 4 drawers have independent locks.

For keyed-alike locks (K), order lock plugs separately. See Keyed-Alike Information in Appendices.

Dimensions



Specification Information

Step 1.

CG60

Step 2. Configuration

- 2. 4 medium drawers
- 4. 4 drawers: 1 small, 2 medium, 1 large

Step 3. Depth

- 18 18" deep
- 24 24" deep
- 30 30" deep

Step 4. Width

- 18 18" wide
- 24 24" wide
- 30 30" wide

Step 5. Lock

- N no lock
- L keyed differently
- K keyed alike

Prices for Steps 1-5.

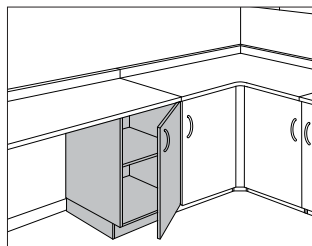
		N	L	K
CG602.	18 18	\$1392	1558	1558
	24	\$1581	1748	1748
	30	\$1801	1967	1967
	24 18	\$1421	1588	1588
	24	\$1607	1774	1774
	30	\$1819	1987	1987
	30 18	\$1602	1767	1767
	24	\$1795	1961	1961
	30	\$1984	2152	2152
CG604.	18 18	\$1392	1558	1558
	24	\$1581	1748	1748
	30	\$1801	1967	1967
	24 18	\$1421	1588	1588
	24	\$1607	1774	1774
	30	\$1819	1987	1987
	30 18	\$1602	1767	1767
	24	\$1795	1961	1961
	30	\$1984	2152	2152

Casework Base Cabinets

Step 6. Surface Finish		
HF	inner tone light	+\$0
LT	light tone	+\$0
LU	soft white	+\$0
WN	warm grey neutral	+\$0
76	light brown walnut	+\$160
91	white	+\$160
HM	natural maple	+\$160
HX	aged cherry	+\$160
OG	honey maple	+\$240
Step 7. Pull Option/Finish		
NN	none	+\$0
BK	black	+\$0
NH	brushed nickel	+\$0

Base Cabinet with Door

CG608.
CG609.



Product Information

Description

This cabinet has a shelf and door and adjustable glides. The shelf is height adjustable in $1\frac{1}{4}$ " increments. Cabinet height without work surface adjusts from 34" to 35 $\frac{1}{2}$ " high.

Notes

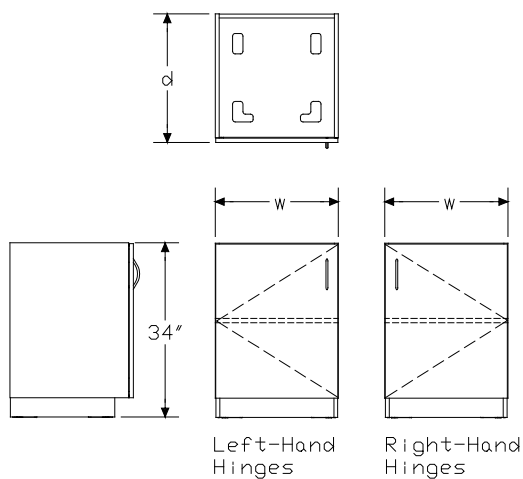
Order work surface (CG211. or CG212.) or corner work surface (CG218. or CG219.) separately.

Order interior components separately:

- Waste container holder (CG903.)

For keyed-alike locks, order lock plugs separately. See Keyed-Alike Information in Appendices.

Dimensions



Specification Information

Step 1.

CG60

Step 2. Hinge Location

- 8.** left-hand hinges
- 9.** right-hand hinges

Step 3. Depth

- 18** 18" deep
- 24** 24" deep
- 30** 30" deep

Step 4. Width

- 18** 18" wide
- 24** 24" wide

Step 5. Lock

- N** no lock
- L** keyed differently
- K** keyed alike

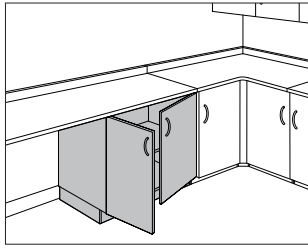
Prices for Steps 1-5.

	N	L	K
CG608. 18 18	\$763	807	807
24	\$859	903	903
24 18	\$828	874	874
24	\$932	978	978
30 18	\$915	960	960
24	\$1025	1069	1069
CG609. 18 18	\$763	807	807
24	\$859	903	903
24 18	\$828	874	874
24	\$932	978	978
30 18	\$915	960	960
24	\$1025	1069	1069

Casework Base Cabinets

Step 6. Surface Finish		
HF	inner tone light	+\$0
LT	light tone	+\$0
LU	soft white	+\$0
WN	warm grey neutral	+\$0
76	light brown walnut	+\$90
91	white	+\$90
HM	natural maple	+\$90
HX	aged cherry	+\$90
OG	honey maple	+\$135
Step 7. Pull Option/Finish		
NN	none	+\$0
BK	black	+\$0
NH	brushed nickel	+\$0

Base Cabinet with Double Doors CG614.



Product Information

Description

This cabinet has a shelf and 2 doors and adjustable glides. The shelf is height adjustable in 1 $\frac{1}{4}$ " increments. Cabinet height without work surface adjusts from 34" to 35 $\frac{1}{2}$ " high.

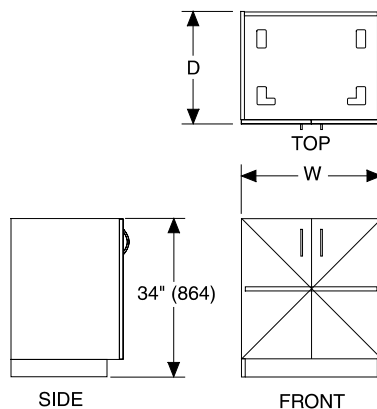
Notes

Order work surface (CG211. or CG212.) or corner work surface (CG218. or CG219.) separately.

Double doors with lock option are controlled by 1 lock.

For keyed-alike locks, order lock plugs separately. See Keyed-Alike Information in Appendices.

Dimensions



Specification Information

Step 1.

CG614.

Step 2. Depth

18	18" deep
24	24" deep
30	30" deep

Step 3. Width

For 18" deep (18) or 30" deep (30)

30	30" wide
-----------	----------

For 24" deep (24)

24	24" wide
30	30" wide
36	36" wide

Step 4. Lock

N	no lock
L	keyed differently
K	keyed alike

Prices for Steps 1-4.

	N	L	K
CG614. 18 30	\$912	957	957
24 24	\$972	1016	1016
30	\$992	1035	1035
36	\$1071	1115	1115
30 30	\$1084	1129	1129

Step 5. Surface Finish

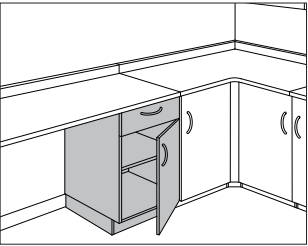
HF	inner tone light	+\$0
LT	light tone	+\$0
LU	soft white	+\$0
WN	warm grey neutral	+\$0
76	light brown walnut	+\$100
91	white	+\$100
HM	natural maple	+\$100
HX	aged cherry	+\$100
OG	honey maple	+\$150

Step 6. Pull Option/Finish

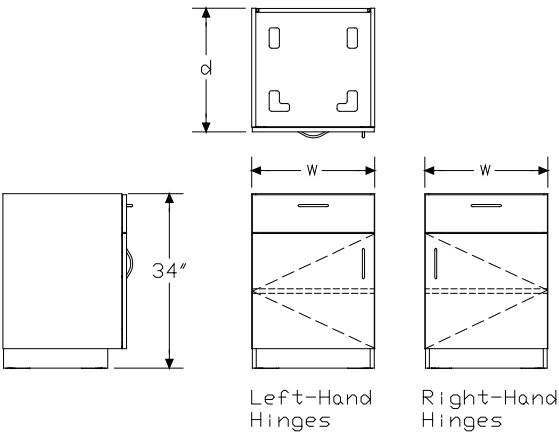
NN	none	+\$0
BK	black	+\$0
NH	brushed nickel	+\$0

Base Cabinet with Drawer and Door

CG626.
CG627.



Product Information
Description This cabinet has a medium drawer, a shelf, a door and adjustable glides. The shelf is height adjustable in 1¼" increments. Cabinet height without work surface adjusts from 34" to 35½" high.
Notes Order work surface (CG211. or CG212.) or corner work surface (CG218. or CG219.) separately. Base cabinet with lock includes lock on drawer and door. For keyed-alike locks, order lock plugs separately. See Keyed-Alike Information in Appendices.
Dimensions



Specification Information
Step 1. CG62
Step 2. Hinge Location 6. left-hand hinges 7. right-hand hinges
Step 3. Depth 18 18" deep 24 24" deep 30 30" deep
Step 4. Width 18 18" wide 24 24" wide
Step 5. Lock N no lock L keyed differently K keyed alike

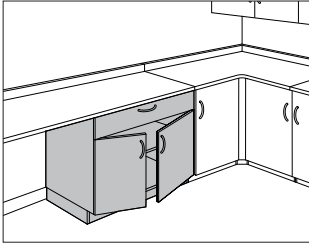
Prices for Steps 1-5.			
	N	L	K
CG626. 18 18	\$891	985	985
24	\$992	1084	1084
24 18	\$946	1038	1038
24	\$1060	1152	1152
30 18	\$1027	1119	1119
24	\$1159	1252	1252
CG627. 18 18	\$891	985	985
24	\$992	1084	1084
24 18	\$946	1038	1038
24	\$1060	1152	1152
30 18	\$1027	1119	1119
24	\$1159	1252	1252

Base Cabinet with Drawer and Door *continued*

Step 6. Surface Finish		
HF	inner tone light	+\$0
LT	light tone	+\$0
LU	soft white	+\$0
WN	warm grey neutral	+\$0
76	light brown walnut	+\$100
91	white	+\$100
HM	natural maple	+\$100
HX	aged cherry	+\$100
OG	honey maple	+\$150
Step 7. Pull Option/Finish		
NN	none	+\$0
BK	black	+\$0
NH	brushed nickel	+\$0

Base Cabinet with Drawer and Double Doors

CG625.



Product Information

Description

This cabinet has a medium drawer, a shelf, 2 doors and adjustable glides. The shelf is height adjustable in $1\frac{1}{4}$ " increments. Cabinet height without work surface adjusts from 34" to 35 $\frac{1}{2}$ " high.

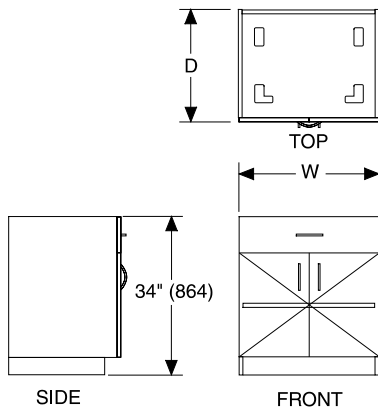
Notes

Order work surface (CG211. or CG212.) or corner work surface (CG218. or CG219.) separately.

Base cabinet with lock includes lock on drawer and both doors.

For keyed-alike locks, order lock plugs separately. See Keyed-Alike Information in Appendices.

Dimensions



Specification Information

Step 1.

CG625.

Step 2. Depth

18	18" deep
24	24" deep
30	30" deep

Step 3. Width

For 18" deep (18) or 30" deep (30)

30	30" wide
-----------	----------

For 24" deep (24)

24	24" wide
30	30" wide
36	36" wide

Step 4. Lock

N	no lock
L	keyed differently
K	keyed alike

Prices for Steps 1-4.

	N	L	K
CG625. 18 30	\$1207	1298	1298
24 24	\$1231	1323	1323
30	\$1260	1350	1350
36	\$1288	1380	1380
30 30	\$1296	1388	1388

Step 5. Surface Finish

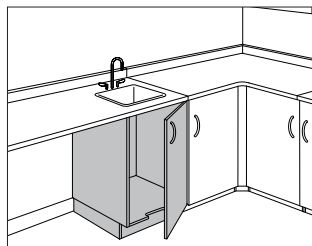
HF	inner tone light	+\$0
LT	light tone	+\$0
LU	soft white	+\$0
WN	warm grey neutral	+\$0
76	light brown walnut	+\$120
91	white	+\$120
HM	natural maple	+\$120
HX	aged cherry	+\$120
OG	honey maple	+\$180

Step 6. Pull Option/Finish

NN	none	+\$0
BK	black	+\$0
NH	brushed nickel	+\$0

Sink Cabinet with Door

CG636.
CG637.



Product Information

Description

This 24"-wide cabinet has a base cabinet bottom with a foot pedal cutout, a door and adjustable glides. Cabinet height without work surface adjusts from 34" to 35 1/2" high.

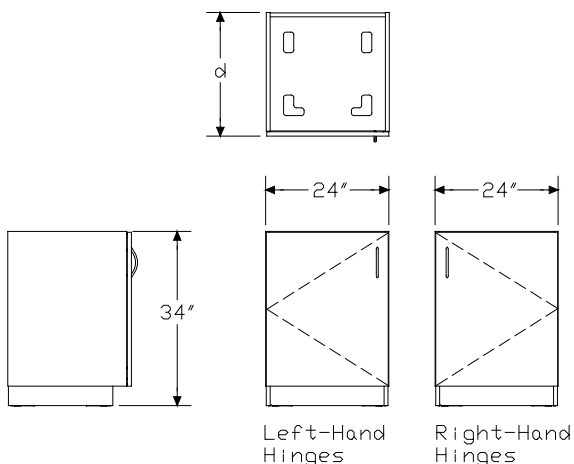
Notes

Order Corian® work surface (CG212. or CG219.) separately.

Sink must be customer supplied and field installed.

For keyed-alike locks, order lock plugs separately. See Keyed-Alike Information in Appendices.

Dimensions



Specification Information

Step 1.

CG63

Step 2. Hinge Location

- 6.** left-hand hinges
- 7.** right-hand hinges

Step 3. Depth

- 1824** 18" deep
- 2424** 24" deep
- 3024** 30" deep

Step 4. Lock

- N** no lock
- L** keyed differently
- K** keyed alike

Prices for Steps 1-4.

	N	L	K
CG636. 1824	\$814	865	865
2424	\$848	901	901
3024	\$912	962	962
CG637. 1824	\$814	865	865
2424	\$848	901	901
3024	\$912	962	962

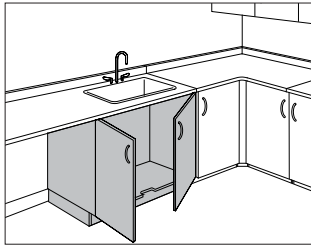
Step 5. Surface Finish

HF	inner tone light	+\$0
LT	light tone	+\$0
LU	soft white	+\$0
WN	warm grey neutral	+\$0
76	light brown walnut	+\$80
91	white	+\$80
HM	natural maple	+\$80
HX	aged cherry	+\$80
OG	honey maple	+\$120

Step 6. Pull Option/Finish

NN	none	+\$0
BK	black	+\$0
NH	brushed nickel	+\$0

Sink Cabinet with Double Doors CG635.



Product Information

Description

This cabinet has a base cabinet bottom with a foot pedal cutout, 2 doors and adjustable glides. Cabinet height without work surface adjusts from 34" to 35 1/2" high.

Notes

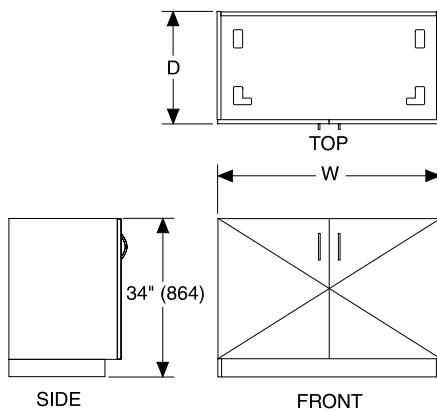
Order Corian® work surface separately:

- Corner work surface (CG219.) for 30"-wide sink cabinet only
- Work surface (CG212.)

Sink must be customer supplied and field installed.

For keyed-alike locks, order lock plugs separately. See Keyed-Alike Information in Appendices.

Dimensions



Specification Information

Step 1.

CG635.

Step 2. Depth

24	24" deep
30	30" deep

Step 3. Width

For 24" deep (24)

30	30" wide
36	36" wide

For 30" deep (30)

30	30" wide
-----------	----------

Step 4. Lock

N	no lock
L	keyed differently
K	keyed alike

Prices for Steps 1-4.

	N	L	K
CG635. 24 30	\$954	1002	1002
36	\$1028	1077	1077
30 30	\$1031	1080	1080

Step 5. Surface Finish

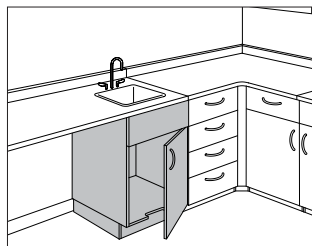
HF	inner tone light	+\$0
LT	light tone	+\$0
LU	soft white	+\$0
WN	warm grey neutral	+\$0
76	light brown walnut	+\$100
91	white	+\$100
HM	natural maple	+\$100
HX	aged cherry	+\$100
OG	honey maple	+\$150

Step 6. Pull Option/Finish

NN	none	+\$0
BK	black	+\$0
NH	brushed nickel	+\$0

Sink Cabinet with Door and Drawer Front

CG643.
CG644.



Product Information

Description

This 24"-wide cabinet has a base cabinet bottom with a foot pedal cutout, a medium-size drawer front, a door and adjustable glides. Cabinet height without work surface adjusts from 34" to 35½" high.

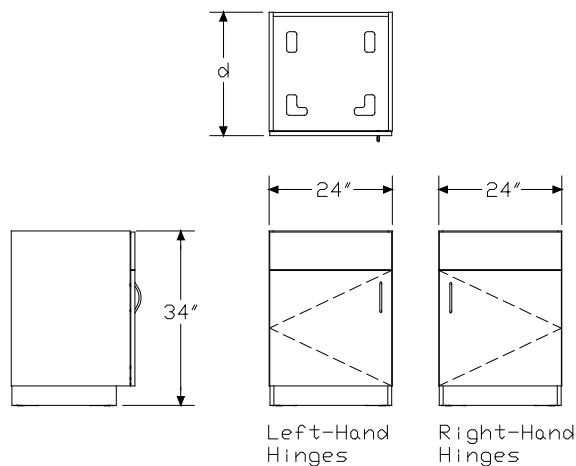
Notes

Order Corian® work surface (CG212. or CG219.) separately.

Sink must be customer supplied and field installed.

For keyed-alike locks, order lock plugs separately. See Keyed-Alike Information in Appendices.

Dimensions



Specification Information

Step 1.

CG64

Step 2. Hinge Location

- 3.** left-hand hinges
- 4.** right-hand hinges

Step 3. Depth

- 1824** 18" deep
- 2424** 24" deep
- 3024** 30" deep

Step 4. Lock

- N** no lock
- L** keyed differently
- K** keyed alike

Prices for Steps 1-4.

	N	L	K
CG643. 1824	\$796	846	846
2424	\$841	892	892
3024	\$915	965	965
CG644. 1824	\$796	846	846
2424	\$841	892	892
3024	\$1007	965	965

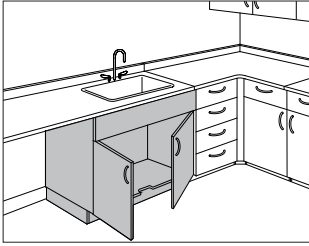
Step 5. Surface Finish

HF	inner tone light	+\$0
LT	light tone	+\$0
LU	soft white	+\$0
WN	warm grey neutral	+\$0
76	light brown walnut	+\$80
91	white	+\$80
HM	natural maple	+\$80
HX	aged cherry	+\$80
OG	honey maple	+\$120

Step 6. Pull Option/Finish

NN	none	+\$0
BK	black	+\$0
NH	brushed nickel	+\$0

Sink Cabinet with Double Doors and Drawer Front CG642.



Product Information

Description

This cabinet has a base cabinet bottom with a foot pedal cutout, a medium-size drawer front, 2 doors and adjustable glides. Cabinet height without work surface adjusts from 34" to 35 1/2" high.

Notes

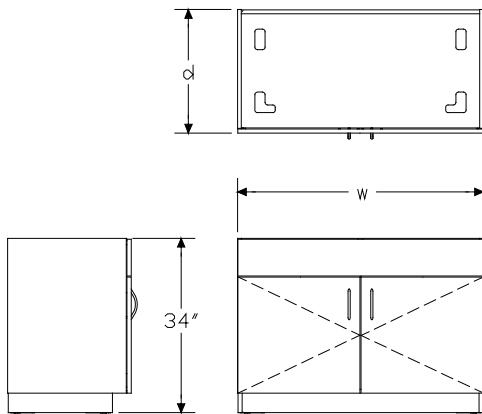
Order Corian® work surface separately:

- Corner work surface (CG219.) for 30"-wide sink cabinet only
- Work surface (CG212.)

Sink must be customer supplied and field installed.

For keyed-alike locks, order lock plugs separately. See Keyed-Alike Information in Appendices.

Dimensions



Specification Information

Step 1.

CG642.

Step 2. Depth

24	24" deep
30	30" deep

Step 3. Width

30	30" wide
36	36" wide
48	48" wide

Step 4. Lock

N	no lock
L	keyed differently
K	keyed alike

Prices for Steps 1-4.

	N	L	K
CG642. 24 30	\$957	1005	1005
36	\$1126	1175	1175
48	\$1173	1222	1222
30 30	\$1080	1129	1129
36	\$1208	1256	1256
48	\$1258	1308	1308

Step 5. Surface Finish

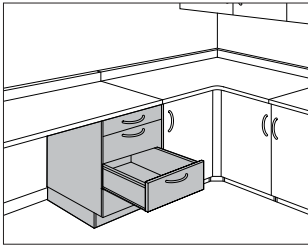
HF	inner tone light	+\$0
LT	light tone	+\$0
LU	soft white	+\$0
WN	warm grey neutral	+\$0
76	light brown walnut	+\$120
91	white	+\$120
HM	natural maple	+\$120
HX	aged cherry	+\$120
OG	honey maple	+\$180

Step 6. Pull Option/Finish

NN	none	+\$0
BK	black	+\$0
NH	brushed nickel	+\$0

ADA Base Cabinet with Drawers

CG800.
CG801.



Product Information

Description

This cabinet has 4 drawers and adjustable glides. Cabinet height without work surface adjusts from 32" to 33½" high.

Notes

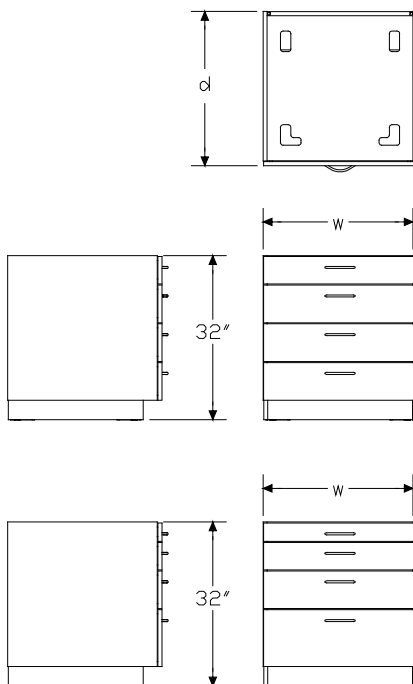
Order work surface (CG211. or CG212.) or corner work surface (CG218. or CG219.) separately.

Height conforms to guidelines of Americans with Disability Act (ADA).

For keyed differently lock option (L), all 4 drawers have independent locks.

For keyed-alike locks (K), order lock plugs separately. See Keyed-Alike Information in Appendices.

Dimensions



Specification Information

Step 1.

CG80

Step 2. Configuration

- 0. 4 drawers: 1 small, 3 medium
- 1. 4 drawers: 2 small, 1 medium, 1 large

Step 3. Depth

- 18 18" deep
- 24 24" deep

Step 4. Width

- 18 18" wide
- 24 24" wide
- 30 30" wide

Step 5. Lock

- N no lock
- L keyed differently
- K keyed alike

Prices for Steps 1-5.

	N	L	K
CG800. 18 18	\$1262	1448	1448
24	\$1435	1618	1618
30	\$1632	1817	1817
24 18	\$1291	1474	1474
24	\$1457	1642	1642
30	\$1649	1832	1832
CG801. 18 18	\$1262	1448	1448
24	\$1435	1618	1618
30	\$1632	1817	1817
24 18	\$1291	1474	1474
24	\$1457	1642	1642
30	\$1649	1832	1832

ADA Base Cabinet with Drawers

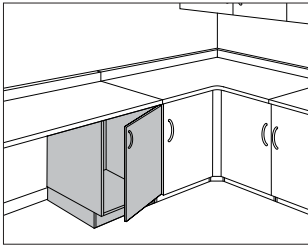
continued

Casework Base Cabinets

Step 6. Surface Finish		
HF	inner tone light	+\$0
LT	light tone	+\$0
LU	soft white	+\$0
WN	warm grey neutral	+\$0
76	light brown walnut	+\$150
91	white	+\$150
HM	natural maple	+\$150
HX	aged cherry	+\$150
OG	honey maple	+\$225
Step 7. Pull Option/Finish		
NN	none	+\$0
BK	black	+\$0
NH	brushed nickel	+\$0

ADA Base Cabinet with Door

CG802.
CG803.



Product Information

Description

This cabinet has a shelf and a door and adjustable glides. The shelf is height adjustable in $1\frac{1}{4}$ " increments. Cabinet height without work surface adjusts from 32" to 33 $\frac{1}{2}$ " high.

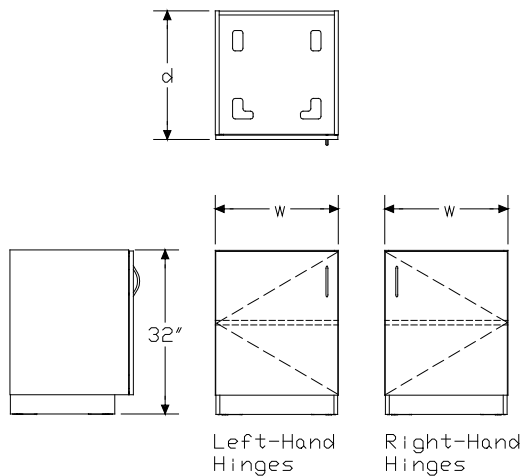
Notes

Order work surface (CG211. or CG212.) or corner work surface (CG218. or CG219.) separately.

Height conforms to guidelines of Americans with Disability Act (ADA).

For keyed-alike locks, order lock plugs separately. See Keyed-Alike Information in Appendices.

Dimensions



Specification Information

Step 1.

CG80

Step 2. Hinge Location

2. left-hand hinges
3. right-hand hinges

Step 3. Depth

- | | |
|-----------|----------|
| 18 | 18" deep |
| 24 | 24" deep |

Step 4. Width

- | | |
|-----------|----------|
| 18 | 18" wide |
| 24 | 24" wide |

Step 5. Lock

- | | |
|----------|-------------------|
| N | no lock |
| L | keyed differently |
| K | keyed alike |

Prices for Steps 1-5.

	N	L	K
CG802. 18 18	\$733	783	783
24	\$823	874	874
24 18	\$795	845	845
24	\$894	945	945
CG803. 18 18	\$733	783	783
24	\$823	874	874
24 18	\$795	845	845
24	\$894	945	945

Step 6. Surface Finish

HF	inner tone light	+\$0
LT	light tone	+\$0
LU	soft white	+\$0
WN	warm grey neutral	+\$0
76	light brown walnut	+\$80
91	white	+\$80
HM	natural maple	+\$80
HX	aged cherry	+\$80
OG	honey maple	+\$120

ADA Base Cabinet with Door

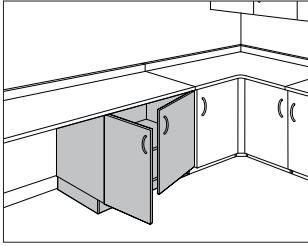
continued

Casework Base Cabinets

Step 7. Pull Option/Finish		
NN	none	+\$0
BK	black	+\$0
NH	brushed nickel	+\$0

ADA Base Cabinet with Double Doors

CG804.



Product Information

Description

This 30"-wide cabinet has a shelf and 2 doors and adjustable glides. The shelf is height adjustable in 1 $\frac{1}{4}$ " increments. Cabinet height without work surface adjusts from 32" to 33 $\frac{1}{2}$ " high.

Notes

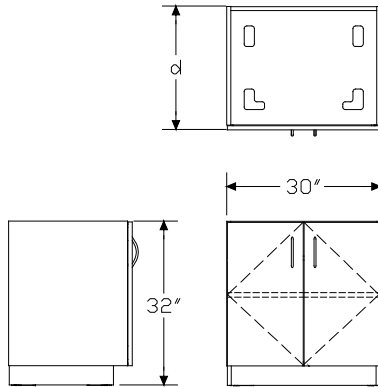
Order work surface (CG211. or CG212.) or corner work surface (CG218. or CG219.) separately.

Height conforms to guidelines of Americans with Disability Act (ADA).

Double doors with lock option are controlled by 1 lock.

For keyed-alike locks, order lock plugs separately. See Keyed-Alike Information in Appendices.

Dimensions



Specification Information

Step 1.

CG804.

Step 2. Depth

1830 18" deep

2430 24" deep

Step 3. Lock

N no lock

L keyed differently

K keyed alike

Prices for Steps 1-3.

	N	L	K
CG804. 1830	\$862	908	908
2430	\$937	983	983

Step 4. Surface Finish

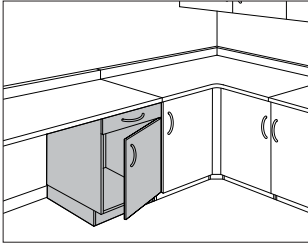
HF	inner tone light	+\$0
LT	light tone	+\$0
LU	soft white	+\$0
WN	warm grey neutral	+\$0
76	light brown walnut	+\$80
91	white	+\$80
HM	natural maple	+\$80
HX	aged cherry	+\$80
OG	honey maple	+\$120

Step 5. Pull Option/Finish

NN	none	+\$0
BK	black	+\$0
NH	brushed nickel	+\$0

ADA Base Cabinet with Drawer and Door

CG805.
CG806.



Product Information

Description

This cabinet has a small drawer, a shelf, a door and adjustable glides. The shelf is height adjustable in $1\frac{1}{4}$ " increments. Cabinet height without work surface adjusts from 32" to 33 $\frac{1}{2}$ " high.

Notes

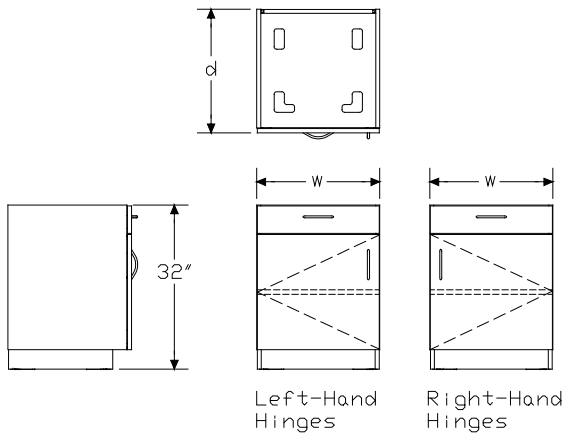
Order work surface (CG211. or CG212.) or corner work surface (CG218. or CG219.) separately.

Height conforms to guidelines of Americans with Disability Act (ADA).

Base cabinet with lock includes lock on drawer and door.

For keyed-alike locks, order lock plugs separately. See Keyed-Alike Information in Appendices.

Dimensions



Specification Information

Step 1.

CG80

Step 2. Hinge Location

- 5. left-hand hinges
- 6. right-hand hinges

Step 3. Depth

- 18 18" deep
- 24 24" deep

Step 4. Width

- 18 18" wide
- 24 24" wide

Step 5. Lock

- N no lock
- L keyed differently
- K keyed alike

Prices for Steps 1-5.

	N	L	K
CG805. 18 18	\$860	951	951
24	\$943	1034	1034
24 18	\$912	1006	1006
24	\$1010	1101	1101
CG806. 18 18	\$860	951	951
24	\$943	1034	1034
24 18	\$912	1006	1006
24	\$1010	1101	1101

Step 6. Surface Finish

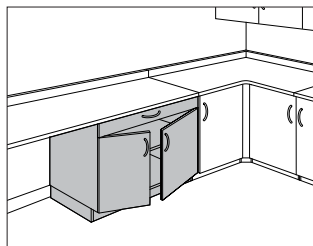
HF	inner tone light	+\$0
LT	light tone	+\$0
LU	soft white	+\$0
WN	warm grey neutral	+\$0
76	light brown walnut	+\$90
91	white	+\$90
HM	natural maple	+\$90
HX	aged cherry	+\$90
OG	honey maple	+\$135

ADA Base Cabinet with Drawer and Door *continued*

Step 7. Pull Option/Finish		
NN	none	+\$0
BK	black	+\$0
NH	brushed nickel	+\$0

ADA Base Cabinet with Drawer and Double Doors

CG807.



Casework Base Cabinets

Product Information

Description

This 30"-wide cabinet has a small drawer, a shelf, 2 doors and adjustable glides. The shelf is height adjustable in 1 $\frac{1}{4}$ " increments. Cabinet height without work surface adjusts from 32" to 33 $\frac{1}{2}$ " high.

Notes

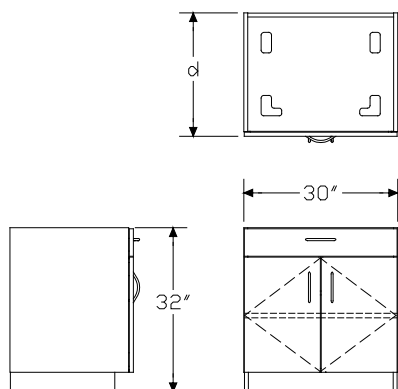
Order work surface (CG211. or CG212.) or corner work surface (CG218. or CG219.) separately.

Height conforms to guidelines of Americans with Disability Act (ADA).

Base cabinet with lock includes lock on drawer and both doors.

For keyed-alike locks, order lock plugs separately. See Keyed-Alike Information in Appendices.

Dimensions



Specification Information

Step 1.

CG807.

Step 2. Depth

1830 18" deep

2430 24" deep

Step 3. Lock

N no lock

L keyed differently

K keyed alike

Prices for Steps 1-3.

	N	L	K
CG807. 1830	\$1142	1233	1233
2430	\$1222	1313	1313

Step 4. Surface Finish

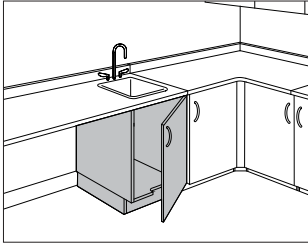
HF	inner tone light	+\$0
LT	light tone	+\$0
LU	soft white	+\$0
WN	warm grey neutral	+\$0
76	light brown walnut	+\$120
91	white	+\$120
HM	natural maple	+\$120
HX	aged cherry	+\$120
OG	honey maple	+\$180

Step 5. Pull Option/Finish

NN	none	+\$0
BK	black	+\$0
NH	brushed nickel	+\$0

ADA Sink Cabinet with Door

CG808.
CG809.



Product Information

Description

This 24"-wide cabinet has a base cabinet bottom with a foot pedal cutout, a door and adjustable glides. Cabinet height without work surface adjusts from 32" to 33½" high.

Notes

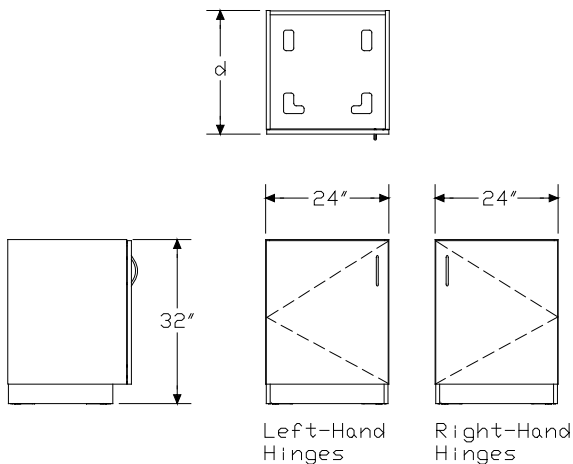
Order Corian® work surface (CG212. or CG219.) separately.

Sink must be customer supplied and field installed.

Height conforms to guidelines of Americans with Disability Act (ADA).

For keyed-alike locks, order lock plugs separately. See Keyed-Alike Information in Appendices.

Dimensions



Specification Information

Step 1.

CG80

Step 2. Hinge Location

- 8. left-hand hinges
- 9. right-hand hinges

Step 3. Depth

- 1824 18" deep
- 2424 24" deep

Step 4. Lock

- N no lock
- L keyed differently
- K keyed alike

Prices for Steps 1-4.

	N	L	K
CG808. 1824	\$777	827	827
2424	\$822	874	874
CG809. 1824	\$777	827	827
2424	\$822	874	874

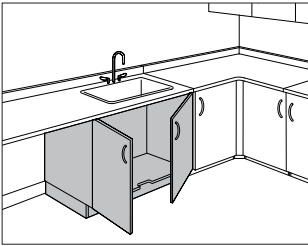
Step 5. Surface Finish

HF	inner tone light	+\$0
LT	light tone	+\$0
LU	soft white	+\$0
WN	warm grey neutral	+\$0
76	light brown walnut	+\$80
91	white	+\$80
HM	natural maple	+\$80
HX	aged cherry	+\$80
OG	honey maple	+\$120

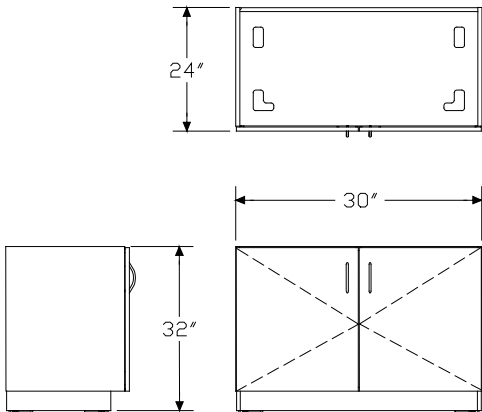
Step 6. Pull Option/Finish

NN	none	+\$0
BK	black	+\$0
NH	brushed nickel	+\$0

ADA Sink Cabinet with Double Doors CG810.



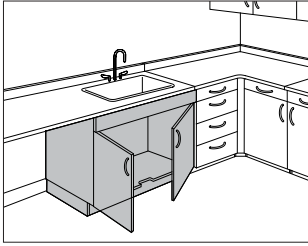
Product Information
Description This 24"-deep, 30"-wide cabinet has a base cabinet bottom with a foot pedal cutout, 2 doors and adjustable glides. Cabinet height without work surface adjusts from 32" to 33½" high.
Notes Order Corian® work surface separately: • Corner work surface (CG219.) for 30"-wide sink cabinet only • Work surface (CG212.) Sink must be customer supplied and field installed. Height conforms to guidelines of Americans with Disability Act (ADA). For keyed-alike locks, order lock plugs separately. See Keyed-Alike Information in Appendices.
Dimensions



Specification Information
Step 1. CG810.2430
Step 2. Lock N no lock L keyed differently K keyed alike
Prices for Steps 1-2.
CG810.2430 N \$914 L \$966 K \$966
Step 3. Surface Finish
HF inner tone light +\$0 LT light tone +\$0 LU soft white +\$0 WN warm grey neutral +\$0 76 light brown walnut +\$90 91 white +\$90 HM natural maple +\$90 HX aged cherry +\$90 OG honey maple +\$135
Step 4. Pull Option/Finish
NN none +\$0 BK black +\$0 NH brushed nickel +\$0

ADA Sink Cabinet with Double Doors and Drawer Front

CG813.



Product Information

Description

This 24"-deep cabinet has a base cabinet bottom with a foot pedal cutout, a small-size drawer front, 2 doors and adjustable glides. Cabinet height without work surface adjusts from 32" to 33½" high.

Notes

Order Corian® work surface separately:

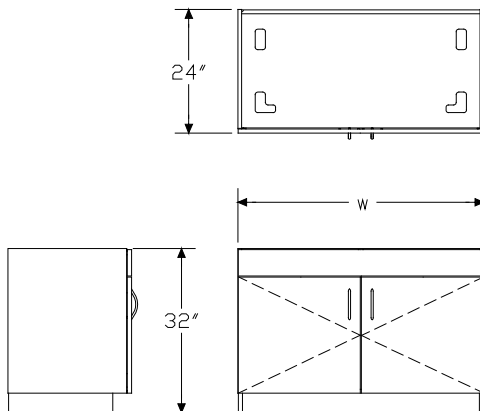
- Corner work surface (CG219.) for 30"-wide sink cabinet only
- Work surface (CG212.)

Sink must be customer supplied and field installed.

Height conforms to guidelines of Americans with Disability Act (ADA).

For keyed-alike locks, order lock plugs separately. See Keyed-Alike Information in Appendices.

Dimensions



Specification Information

Step 1.

CG813.24

Step 2. Width

30	30" wide
48	48" wide

Step 3. Lock

N	no lock
L	keyed differently
K	keyed alike

Prices for Steps 1-3.

	N	L	K
CG813.24 30	\$990	1042	1042
48	\$1217	1269	1269

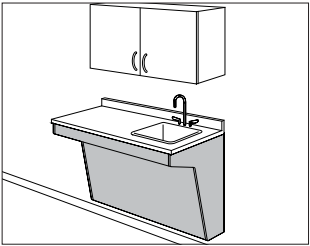
Step 4. Surface Finish

HF	inner tone light	+\$0
LT	light tone	+\$0
LU	soft white	+\$0
WN	warm grey neutral	+\$0
76	light brown walnut	+\$100
91	white	+\$100
HM	natural maple	+\$100
HX	aged cherry	+\$100
OG	honey maple	+\$150

Step 5. Pull Option/Finish

NN	none	+\$0
BK	black	+\$0
NH	brushed nickel	+\$0

ADA Sink Support, Wall Mounted CG508.



Casework Base Cabinets

Product Information

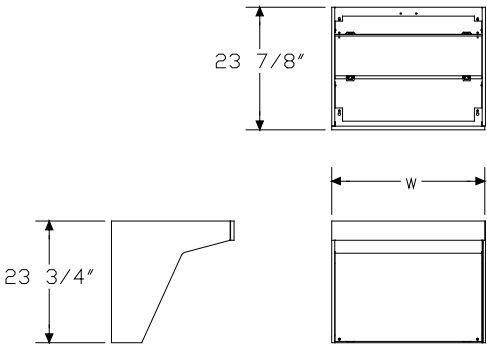
Description

This 24"-deep sink support hangs from an architectural wall. It supports a 5½"-deep sink and a work surface. The sink support has a 4"-high laminate front trim and a removable front panel to allow access to plumbing. Shipped knocked down.

Notes

Order Corian® work surface (CG212.) separately.
Sink must be customer supplied and field installed. A Just SL-ADA-1921-A-GR-3 sink, with drain located in rear center, fits in a 24" × 24" sink support.

Dimensions



Specification Information

Step 1.

CG508.24

Step 2. Width

24	24" wide
30	30" wide
48	48" wide
60	60" wide

Prices for Steps 1-2.

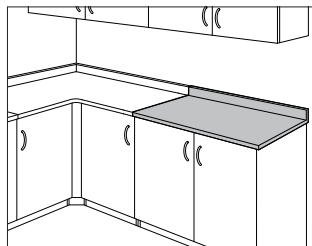
CG508.24	24	\$967
	30	\$1036
	48	\$1243
	60	\$1383

Step 3. Surface Finish

HF	inner tone light	+\$0
LT	light tone	+\$0
LU	soft white	+\$0
WN	warm grey neutral	+\$0
76	light brown walnut	+\$100
91	white	+\$100
HM	natural maple	+\$100
HX	aged cherry	+\$100
OG	honey maple	+\$150

Work Surface

CG211.



Product Information

Description

This work surface attaches to the top of 1 or more base cabinets or hangs from an architectural wall and abuts the side of a base cabinet. It has a laminate or Chemsurf® top and includes a backsplash.

Notes

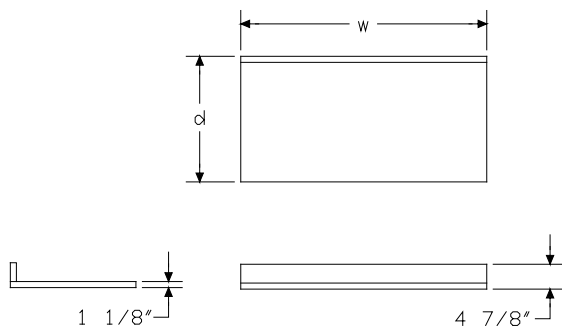
Order base cabinet (CG502., CG602., CG604., CG608., CG609., CG614., CG625., CG626., or CG627.) separately.

Order ADA base cabinet (CG800., CG801., CG802., CG803., CG804., CG805., CG806., CG807., or CG814.) separately.

For work surface attached to wall, order work surface support (CG509.) separately.

For work surface exposed to moisture, use Corian® work surface (CG212.).

Dimensions



Specification Information

Step 1.

CG211.

Step 2. Depth

18	18" deep
24	24" deep
30	30" deep

Step 3. Width

24	24" wide
30	30" wide
36	36" wide
42	42" wide
48	48" wide
60	60" wide
72	72" wide
96	96" wide

Step 4. Surface Material

L	laminate
C	Chemsurf®

Prices for Steps 1-4.

		L	C
CG211. 18	24	\$173	211
	30	\$208	258
	36	\$258	319
	42	\$288	359
	48	\$331	412
	60	\$421	524
	72	\$501	624
	96	\$667	832
24	24	\$216	252
	30	\$260	310
	36	\$322	382
	42	\$360	431
	48	\$412	492
	60	\$526	627
	72	\$627	750
	96	\$833	998

Casework Work Surfaces

30 24	\$260	298
30	\$326	376
36	\$388	447
42	\$454	525
48	\$526	605
60	\$645	747
72	\$751	875
96	\$979	1142

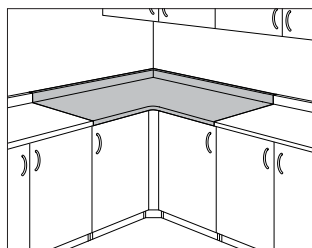
Step 5. Surface Finish

<i>For laminate (L)</i>		
HF	inner tone light	+\$0
LT	light tone	+\$0
LU	soft white	+\$0
WN	warm grey neutral	+\$0
91	white	+\$85

<i>For Chemsurf® (C)</i>		
JD	warm grey neutral Chemsurf®	+\$0
KH	light tone Chemsurf®	+\$0
KR	inner tone light Chemsurf®	+\$0
LE	soft white Chemsurf®	+\$0

Corner Work Surface

CG218.



Product Information

Description

This corner work surface attaches to the top of 1 or more base cabinets or hangs from an architectural wall. It has a laminate or Chemsurf® top and includes a backsplash.

Notes

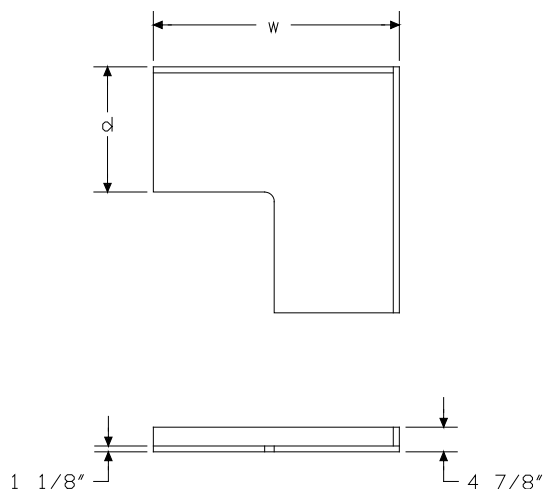
Order base cabinet (CG502., CG602., CG604., CG608., CG609., CG614., CG625., CG626., or CG627.) separately.

Order ADA base cabinet (CG800., CG801., CG802., CG803., CG804., CG805., CG806., CG807., or CG814.) separately.

For work surface attached to wall, order work surface support (CG509.) separately.

For corner work surface exposed to moisture, use Corian® work surface (CG219.).

Dimensions



Specification Information

Step 1.

CG218.

Step 2. Depth/Width

1848 18" deep x 48" wide

2448 24" deep x 48" wide

3060 30" deep x 60" wide

Step 3. Surface Material

L laminate

C Chemsurf®

Prices for Steps 1-3.

	L	C
CG218. 1848	\$588	647
2448	\$764	840
3060	\$1057	1163

Step 4. Surface Finish

For laminate (L)

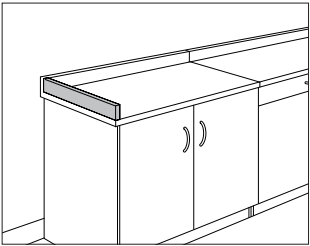
HF	inner tone light	+\$0
LT	light tone	+\$0
LU	soft white	+\$0
WN	warm grey neutral	+\$0
91	white	+\$85

For Chemsurf® (C)

JD	warm grey neutral Chemsurf®	+\$0
KH	light tone Chemsurf®	+\$0
KR	inner tone light Chemsurf®	+\$0
LE	soft white Chemsurf®	+\$0

Sidesplash

CG296.



Product Information

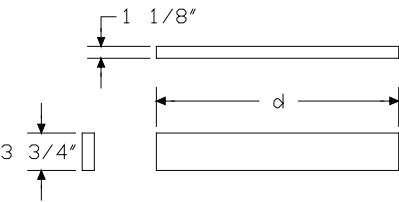
Description

This laminate or Chemsurf® product completes a work surface backsplash at the end of a run of base cabinets.

Notes

Order work surface (CG211.) or corner work surface (CG218.) separately.
Height of sidesplash with work surface is 47/8" from bottom of work surface.

Dimensions



Specification Information

Step 1.

CG296.

Step 2. Depth

18	18" deep
24	24" deep
30	30" deep

Step 3. Surface Material

L	laminate
C	Chemsurf®

Prices for Steps 1-3.

	L	C
CG296. 18	\$72	86
24	\$115	135
30	\$139	151

Step 4. Surface Finish

For laminate (L)

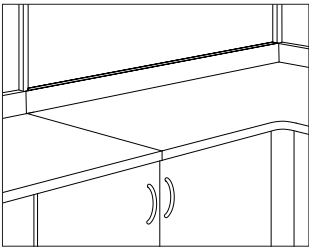
HF	inner tone light	+\$0
LT	light tone	+\$0
LU	soft white	+\$0
WN	warm grey neutral	+\$0
91	white	+\$15

For Chemsurf® (C)

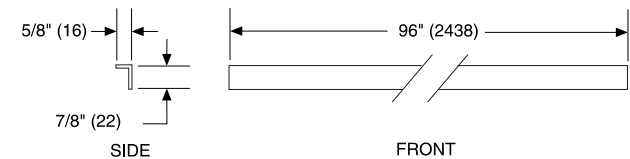
JD	warm grey neutral Chemsurf®	+\$0
KH	light tone Chemsurf®	+\$0
KR	inner tone light Chemsurf®	+\$0
LE	soft white Chemsurf®	+\$0

Backsplash Filler

C2920.

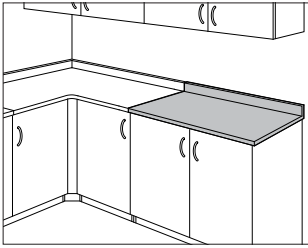


Product Information
Description
This component attaches to a Casework work surface. It fills the gap created when Casework base cabinets are placed against terminal panels or wall strips. Package contains 6. Attachment hardware is included.
Notes
Order work surface (CG211. or CG212.) or corner work surface (CG218. or CG219.) separately.
Dimensions



Specification Information
Step 1.
C2920.96
\$143
Step 2. Surface Finish
HF inner tone light
LT light tone
LU soft white
WN warm grey neutral
+\$0
+\$0
+\$0
+\$0

Casework Work Surfaces



Product Information

Description

This Corian work surface attaches to the top of 1 or more base cabinets or hangs from an architectural wall and abuts the side of a base cabinet. It includes a backsplash.

Notes

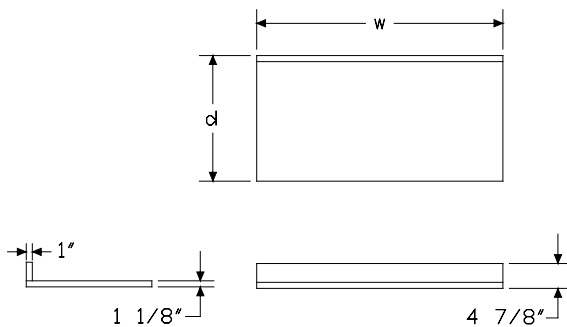
Work surface has a matte gloss level.

Order cabinet separately:

- Base cabinet (CG502., CG602., CG604., CG608., CG609., CG614., CG625., CG626., or CG627.)
- ADA base cabinet or sink cabinet (CG800., CG801., CG802., CG803., CG804., CG805., CG806., CG807., CG808., CG809., CG810., CG813., or CG814.)
- Sink cabinet (CG635., CG636., CG637., CG642., CG643., or CG644.)
- Wall-mounted ADA sink support (CG508.)

For work surface attached to wall, order work surface support (CG509.) separately.

Dimensions



Specification Information

Step 1.

CG212.

Step 2. Depth

18	18" deep
24	24" deep
30	30" deep

Step 3. Width

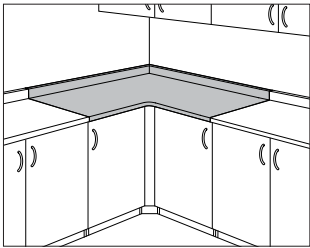
24	24" wide
30	30" wide
36	36" wide
42	42" wide
48	48" wide
60	60" wide
72	72" wide
96	96" wide

Prices for Steps 1-3.

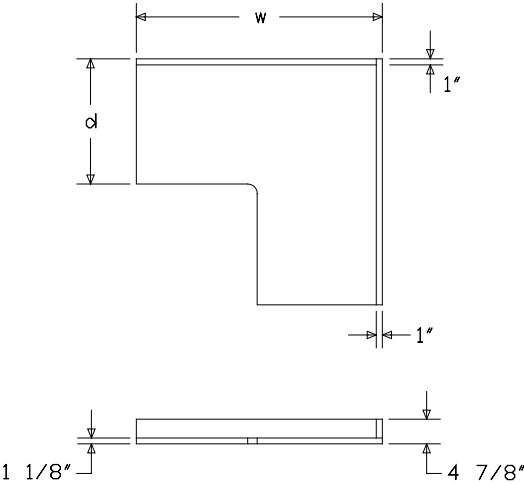
	24	30	36	42	48	60
CG212. 18	\$1068	1243	1419	1597	1773	2125
24	\$1215	1412	1608	1807	2003	2397
30	\$1361	1580	1798	2015	2232	2669
					72	96
CG212. 18					\$2477	3185
24					\$2791	3580
30					\$3103	3975

Step 4. Surface Finish

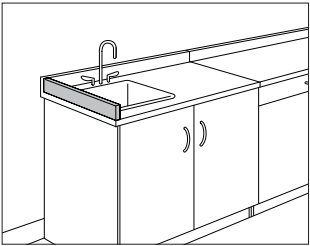
1N	canyon	+\$200
CQ	glacier white	+\$0
QB	bisque	+\$0
1E	flint	+\$320
1S	savannah	+\$200
1U	sahara	+\$200
3I	mojave	+\$200
4I	sandstone	+\$200
58	cameo white	+\$0
IQ	aurora	+\$200
OQ	silt	+\$200
Q1	vanilla	+\$0
7I	raffia	+\$320
BLP	blue pebble A	+\$540



Product Information
Description
This Corian corner work surface with a backsplash attaches to the top of 1 or more base cabinets or hangs from an architectural wall and abuts the side of a base cabinet.
Notes
Order base cabinet (CG502., CG602., CG604., CG608., CG609., CG614., CG625., CG626., or CG627.) separately.
Order ADA base cabinet (CG800., CG801., CG802., CG803., CG804., CG805., CG806., CG807., CG808., CG809., CG810., CG813., or CG814.) separately.
For work surface attached to wall, order work surface support (CG509.) separately.
Surface has a matte gloss level.
Dimensions



Specification Information
Step 1.
CG219.
Step 2. Depth/Width
1848 18" deep x 48" wide
2448 24" deep x 48" wide
3060 30" deep x 60" wide
Prices for Steps 1-2.
CG219. 1848 \$2250
2448 \$2475
3060 \$3355
Step 3. Surface Finish
1N canyon +\$300
CQ glacier white +\$0
QB bisque +\$0
1E flint +\$540
1S savannah +\$300
1U sahara +\$300
3I mojave +\$300
4I sandstone +\$300
58 cameo white +\$0
IQ aurora +\$300
OQ silt +\$300
Q1 vanilla +\$0
7I raffia +\$540
BLP blue pebble <input type="checkbox"/> A +\$540



Product Information

Description

This Corian product completes a work surface backsplash at the end of a run of base cabinets.

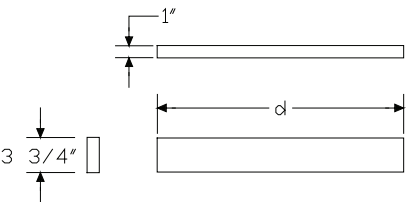
Notes

Sidesplash has a matte gloss level.

Order Corian work surface (CG212.) or Corian corner work surface (CG219.) separately.

Height of sidesplash with work surface is 4 7/8" from bottom of work surface.

Dimensions



Specification Information

Step 1.

CG297.

Step 2. Depth

- 18 18" deep
- 24 24" deep
- 30 30" deep

Prices for Steps 1-2.

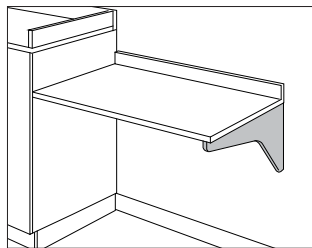
CG297. 18	\$408
24	\$491
30	\$589

Step 3. Surface Finish

1N	canyon	+\$50
CQ	glacier white	+\$0
QB	bisque	+\$0
1E	flint	+\$70
1S	savannah	+\$50
1U	sahara	+\$50
3I	mojave	+\$50
4I	sandstone	+\$50
58	cameo white	+\$0
IQ	aurora	+\$50
OQ	silt	+\$50
Q1	vanilla	+\$0
7I	raffia	+\$70
BLP	blue pebble	+\$70

Work Surface Support

CG509.



Product Information

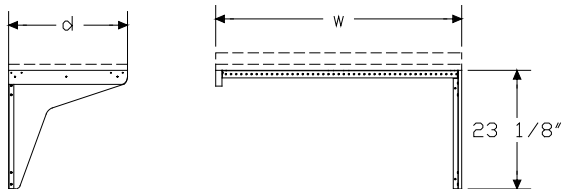
Description

This support bracket holds a work surface or corner work surface that hangs from an architectural wall and abuts the side of a base cabinet.

Notes

Order work surface (CG211. or CG212.) or corner work surface (CG218. or CG219.) separately.

Dimensions



Specification Information

Step 1.

CG509.

Step 2. Depth

18 18" deep

24 24" deep

Step 3. Width

24 24" wide

30 30" wide

36 36" wide

48 48" wide

Prices for Steps 1-3.

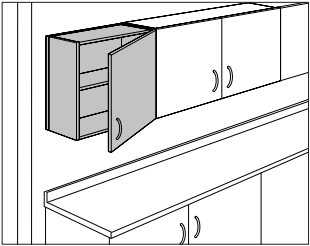
	24	30	36	48
CG509. 18	\$165	170	176	192
24	\$173	177	184	200

Step 4. Surface Finish

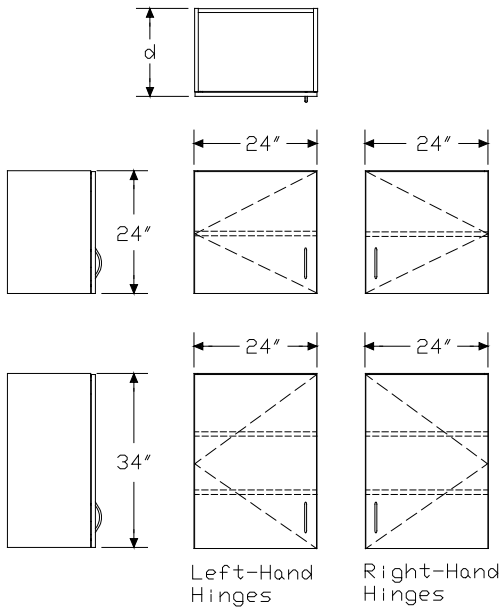
HF	inner tone light			+\$0
LT	light tone			+\$0
LU	soft white			+\$0
WN	warm grey neutral			+\$0
91	white			+\$40

Overhead Cabinet with Door

CG301.
CG302.
CG331.
CG332.



Product Information
Description This 24"-wide cabinet attaches to an architectural wall. It has 1 or 2 shelves and a door. Shelves are height adjustable in 1 ¹ / ₄ " increments.
Notes Order optional products separately: • Add-on shelf (CG387.) • Sloped cabinet top (CG396.) For keyed-alike locks, order lock plugs separately. See Keyed-Alike Information in Appendices.
Dimensions



Specification Information			
Step 1.			
CG3			
Step 2. Configuration/Height			
0	1 shelf and 24" high		
3	2 shelves and 34" high		
Step 3. Hinge Location			
1.	left-hand hinges		
2.	right-hand hinges		
Step 4. Depth			
0924	10½" deep		
1624	17" deep		
Step 5. Lock			
N	no lock		
L	keyed differently		
K	keyed alike		
Prices for Steps 1-5.			
	N	L	K
CG301. 0924	\$509	554	554
1624	\$716	761	761
CG302. 0924	\$509	554	554
1624	\$716	761	761
CG331. 0924	\$784	825	825
1624	\$946	988	988
CG332. 0924	\$784	825	825
1624	\$946	988	988
Step 6. Surface Finish			
HF	inner tone light		+\$0
LT	light tone		+\$0
LU	soft white		+\$0
WN	warm grey neutral		+\$0
76	light brown walnut		+\$90
91	white		+\$90
HM	natural maple		+\$90
HX	aged cherry		+\$90
OG	honey maple		+\$130

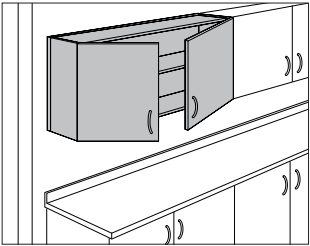
Overhead Cabinet with Door

continued

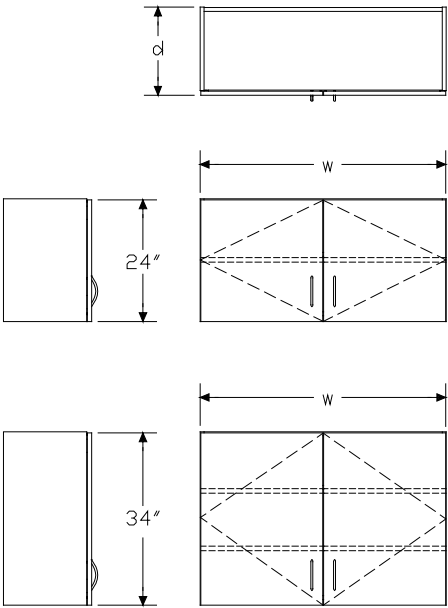
Step 7. Pull Option/Finish		
NN	none	+\$0
BK	black	+\$0
NH	brushed nickel	+\$0

Overhead Cabinet with Double
Doors

CG315.
CG325.



Product Information
Description This cabinet attaches to an architectural wall. It has 1 or 2 shelves and 2 doors. The shelves are height adjustable in 1¼" increments.
Notes Order optional products separately: • Add-on shelf (CG387.) • Sloped cabinet top (CG396.) For keyed-alike locks, order lock plugs separately. See Keyed-Alike Information in Appendices.
Dimensions



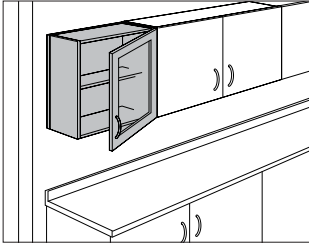
Specification Information				
Step 1.				
CG3				
Step 2. Configuration/Height				
15.	1 shelf and 24" high			
25.	2 shelves and 34" high			
Step 3. Depth				
09	10½" deep			
16	17" deep			
Step 4. Width				
24	24" wide			
30	30" wide			
36	36" wide			
48	48" wide			
Step 5. Lock				
N	no lock			
L	keyed differently			
K	keyed alike			
Prices for Steps 1-5.				
		N	L	K
CG315.	09 24	\$684	728	728
	30	\$697	742	742
	36	\$749	793	793
	48	\$836	880	880
	16 24	\$866	911	911
	30	\$897	942	942
	36	\$964	1009	1009
	48	\$1050	1095	1095
CG325.	09 24	\$757	802	802
	30	\$783	827	827
	36	\$827	873	873
	48	\$922	966	966
	16 24	\$902	947	947
	30	\$927	973	973
	36	\$989	1033	1033
	48	\$1106	1150	1150

Overhead Cabinet with Double Doors *continued*

Step 6. Surface Finish		
HF	inner tone light	+\$0
LT	light tone	+\$0
LU	soft white	+\$0
WN	warm grey neutral	+\$0
76	light brown walnut	+\$110
91	white	+\$110
HM	natural maple	+\$110
HX	aged cherry	+\$110
OG	honey maple	+\$150
Step 7. Pull Option/Finish		
NN	none	+\$0
BK	black	+\$0
NH	brushed nickel	+\$0

Overhead Cabinet with Glass Door

CG304.
CG305.
CG334.
CG335.



Product Information

Description

This 24"-wide cabinet attaches to an architectural wall. It has 1 or 2 shelves and a door with a glass insert. Shelves are height adjustable in 1 $\frac{1}{4}$ " increments.

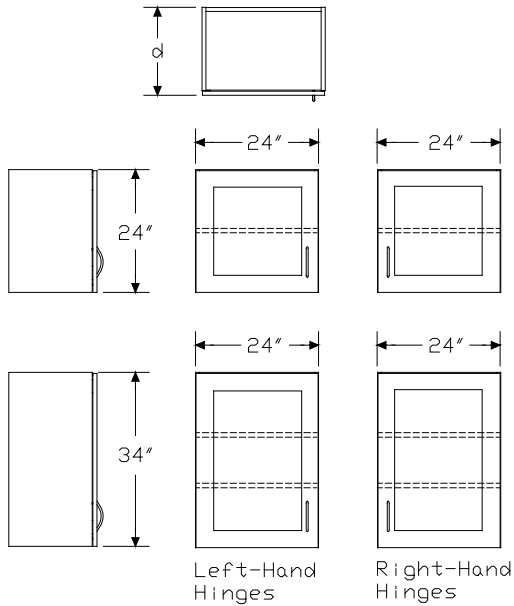
Notes

Order optional products separately:

- Add-on shelf (CG387.)
- Sloped cabinet top (CG396.)

For keyed-alike locks, order lock plugs separately. See Keyed-Alike Information in Appendices.

Dimensions



Specification Information

Step 1.

CG3

Step 2. Configuration/Height

- 0 1 shelf and 24" high
- 3 2 shelves and 34" high

Step 3. Hinge Location

4. left-hand hinges
5. right-hand hinges

Step 4. Depth

- 0924 10 1/2" deep
- 1624 17" deep

Step 5. Lock

- N no lock
- L keyed differently
- K keyed alike

Prices for Steps 1-5.

	N	L	K
CG304. 0924	\$720	773	773
1624	\$784	833	833
CG305. 0924	\$720	773	773
1624	\$784	833	833
CG334. 0924	\$1033	1082	1082
1624	\$1228	1280	1280
CG335. 0924	\$1033	1082	1082
1624	\$1228	1280	1280

Step 6. Surface Finish

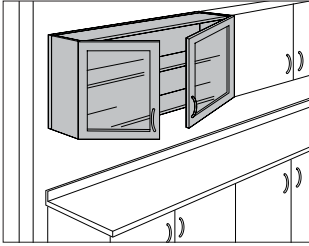
HF	inner tone light <input type="text"/>	+\$0
LT	light tone <input type="text"/>	+\$0
LU	soft white <input type="text"/>	+\$0
WN	warm grey neutral <input type="text"/>	+\$0
76	light brown walnut <input type="text"/>	+\$120
91	white <input type="text"/>	+\$120
HM	natural maple <input type="text"/>	+\$120
HX	aged cherry <input type="text"/>	+\$120
OG	honey maple <input type="text"/>	+\$170

Overhead Cabinet with Glass
Door *continued*

Step 7. Pull Option/Finish		
NN	none <input type="checkbox"/>	+\$0
BK	black <input type="checkbox"/>	+\$0
NH	brushed nickel <input type="checkbox"/>	+\$0

Overhead Cabinet with Double Glass Doors

CG318.
CG328.



Product Information

Description

This cabinet attaches to an architectural wall. It has 1 or 2 shelves and 2 doors with glass inserts. The shelves are height adjustable in 1 $\frac{1}{4}$ " increments.

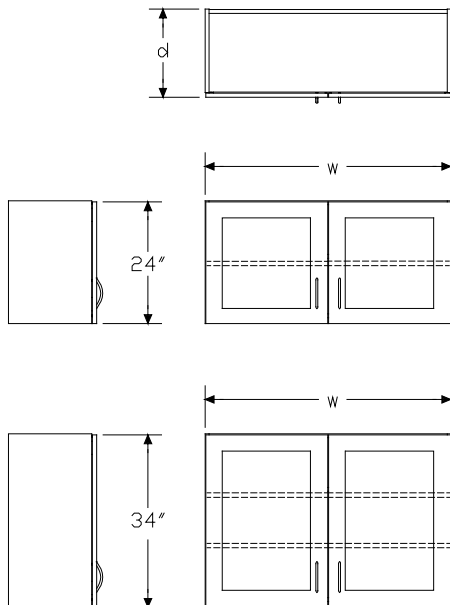
Notes

Order optional products separately:

- Add-on shelf (CG387.)
- Sloped cabinet top (CG396.)

For keyed-alike locks, order lock plugs separately. See Keyed-Alike Information in Appendices.

Dimensions



Specification Information

Step 1.

CG3 ☐

Step 2. Configuration/Height

18. 1 shelf and 24" high ☐

28. 2 shelves and 34" high ☐

Step 3. Depth

09 10 $\frac{1}{2}$ " deep ☐

16 17" deep ☐

Step 4. Width

30 30" wide ☐

36 36" wide ☐

48 48" wide ☐

Step 5. Lock

N no lock ☐

L keyed differently ☐

K keyed alike ☐

Prices for Steps 1-5.

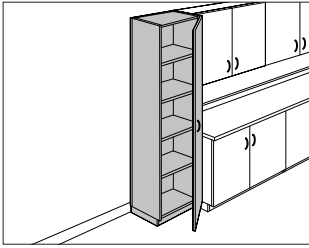
	N	L	K
CG318. 09 30	\$1034	1089	1089
36	\$1093	1147	1147
48	\$1192	1245	1245
16 30	\$1107	1160	1160
36	\$1166	1216	1216
48	\$1285	1336	1336
CG328. 09 30	\$1243	1290	1290
36	\$1305	1350	1350
48	\$1423	1469	1469
16 30	\$1430	1476	1476
36	\$1505	1551	1551
48	\$1653	1701	1701

Overhead Cabinet with Double Glass Doors *continued*

Step 6. Surface Finish		
HF	inner tone light <input type="checkbox"/>	+\$0
LT	light tone <input type="checkbox"/>	+\$0
LU	soft white <input type="checkbox"/>	+\$0
WN	warm grey neutral <input type="checkbox"/>	+\$0
76	light brown walnut <input type="checkbox"/>	+\$170
91	white <input type="checkbox"/>	+\$170
HM	natural maple <input type="checkbox"/>	+\$170
HX	aged cherry <input type="checkbox"/>	+\$170
OG	honey maple <input type="checkbox"/>	+\$240
Step 7. Pull Option/Finish		
NN	none <input type="checkbox"/>	+\$0
BK	black <input type="checkbox"/>	+\$0
NH	brushed nickel <input type="checkbox"/>	+\$0

Storage Cabinet with Door

CG700.
CG701.



Product Information

Description

This 80"-high, 24"-wide cabinet with adjustable glides has 4 shelves and a 76"-high door. Shelves are height adjustable in 1 1/4" increments.

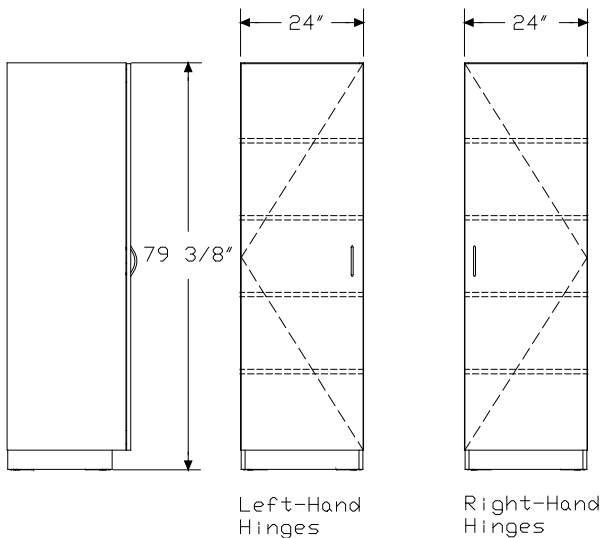
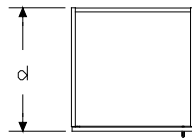
Notes

Order optional products separately:

- Base cabinet shelf (CG516.)
- Sloped cabinet top (CG396.)

For keyed-alike locks, order lock plugs separately. See Keyed-Alike Information in Appendices.

Dimensions



Specification Information

Step 1.

CG70

Step 2. Hinge Location

- 0. left-hand hinges
- 1. right-hand hinges

Step 3. Depth

- 1824 18" deep
- 2424 24" deep

Step 4. Lock

- N no lock
- L keyed differently
- K keyed alike

Prices for Steps 1-4.

	N	L	K
CG700. 1824	\$1705	1750	1750
2424	\$1932	1976	1976
CG701. 1824	\$1705	1750	1750
2424	\$1932	1976	1976

Step 5. Surface Finish

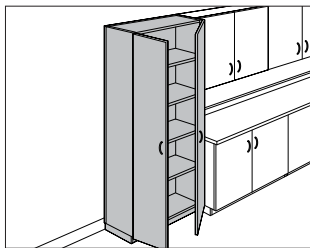
HF	inner tone light	+\$0
LT	light tone	+\$0
LU	soft white	+\$0
WN	warm grey neutral	+\$0
76	light brown walnut	+\$220
91	white	+\$220
HM	natural maple	+\$220
HX	aged cherry	+\$220
OG	honey maple	+\$305

Step 6. Pull Option/Finish

NN	none	+\$0
BK	black	+\$0
NH	brushed nickel	+\$0

Storage Cabinet with Double Doors

CG715.



Product Information

Description

This 80"-high cabinet with adjustable glides has 4 shelves and 2 76"-high doors. The shelves are height adjustable in 1 1/4" increments.

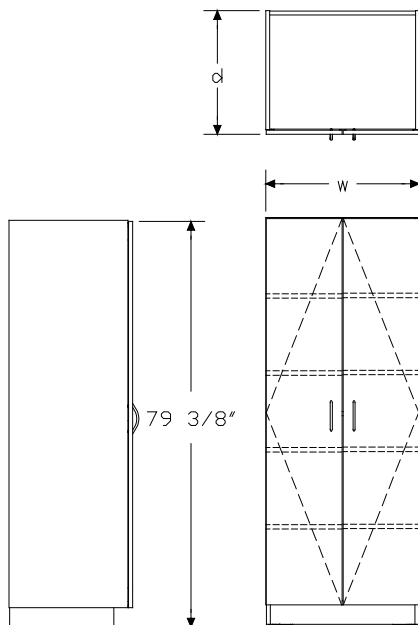
Notes

Order optional products separately:

- Base cabinet shelf (CG516.)
- Sloped cabinet top (CG396.)

For keyed-alike locks, order lock plugs separately. See Keyed-Alike Information in Appendices.

Dimensions



Specification Information

Step 1.

CG715.

Step 2. Depth

18	18" deep
24	24" deep

Step 3. Width

30	30" wide
48	48" wide

Step 4. Lock

N	no lock
L	keyed differently
K	keyed alike

Prices for Steps 1-4.

	N	L	K
CG715. 18 30	\$1750	1795	1795
48	\$2321	2365	2365
24 30	\$2001	2045	2045
48	\$2631	2676	2676

Step 5. Surface Finish

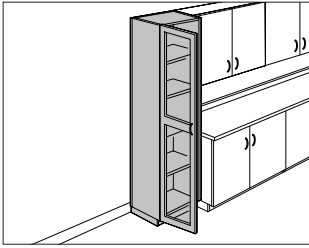
HF	inner tone light	+\$0
LT	light tone	+\$0
LU	soft white	+\$0
WN	warm grey neutral	+\$0
76	light brown walnut	+\$240
91	white	+\$240
HM	natural maple	+\$240
HX	aged cherry	+\$240
OG	honey maple	+\$340

Step 6. Pull Option/Finish

NN	none	+\$0
BK	black	+\$0
NH	brushed nickel	+\$0

Storage Cabinet with Glass Door

CG702.
CG703.



Product Information

Description

This 80"-high, 24"-wide cabinet with adjustable glides has 4 shelves and a 76"-high door with glass inserts. Shelves are height adjustable in 1 1/4" increments.

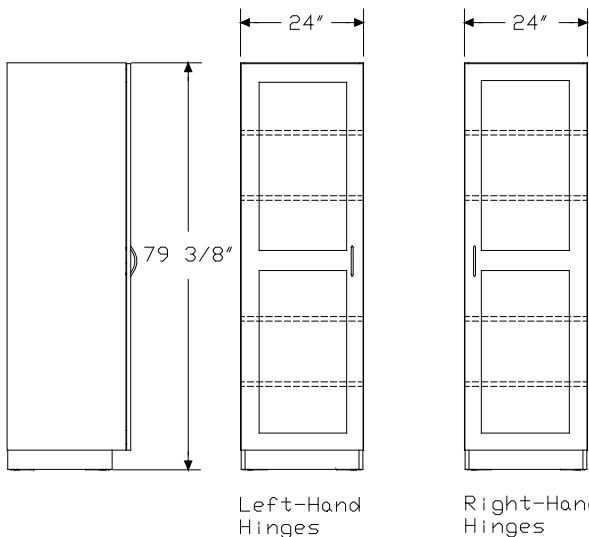
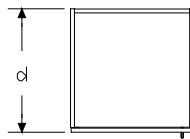
Notes

Order optional products separately:

- Base cabinet shelf (CG516.)
- Sloped cabinet top (CG396.)

For keyed-alike locks, order lock plugs separately. See Keyed-Alike Information in Appendices.

Dimensions



Specification Information

Step 1.

CG70 ☐

Step 2. Hinge Location

- left-hand hinges ☐
- right-hand hinges ☐

Step 3. Depth

- 1824** 18" deep ☐
- 2424** 24" deep ☐

Step 4. Lock

- N** no lock ☐
- L** keyed differently ☐
- K** keyed alike ☐

Prices for Steps 1-4.

	N	L	K
CG702. 1824	\$1747	1793	1793
2424	\$1956	2001	2001
CG703. 1824	\$1747	1793	1793
2424	\$1956	2001	2001

Step 5. Surface Finish

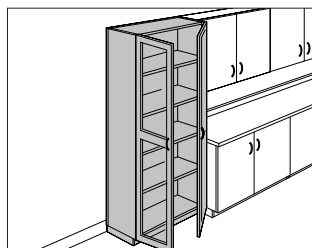
HF	inner tone light <input type="checkbox"/>	+\$0
LT	light tone <input type="checkbox"/>	+\$0
LU	soft white <input type="checkbox"/>	+\$0
WN	warm grey neutral <input type="checkbox"/>	+\$0
76	light brown walnut <input type="checkbox"/>	+\$200
91	white <input type="checkbox"/>	+\$200
HM	natural maple <input type="checkbox"/>	+\$200
HX	aged cherry <input type="checkbox"/>	+\$200
OG	honey maple <input type="checkbox"/>	+\$290

Step 6. Pull Option/Finish

NN	none <input type="checkbox"/>	+\$0
BK	black <input type="checkbox"/>	+\$0
NH	brushed nickel <input type="checkbox"/>	+\$0

Storage Cabinet with Double Glass Doors

CG719.



Product Information

Description

This 80"-high cabinet with adjustable glides has 4 shelves and 2 76"-high doors with glass inserts. The shelves are height adjustable in 1 1/4" increments.

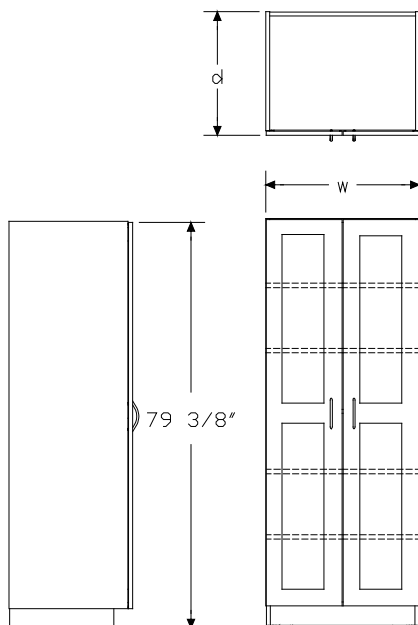
Notes

Note: Order optional products separately:

- Base cabinet shelf (CG516.)
- Sloped cabinet top (CG396.)

For keyed-alike locks, order lock plugs separately. See Keyed-Alike Information in Appendices.

Dimensions



Specification Information

Step 1.

CG719. [A]

Step 2. Depth

18 18" deep [A]

24 24" deep [A]

Step 3. Width

30 30" wide [A]

48 48" wide [A]

Step 4. Lock

N no lock [A]

L keyed differently [A]

K keyed alike [A]

Prices for Steps 1-4.

	N	L	K
CG719. 18 30	\$2358	2402	2402
48	\$2981	3025	3025
24 30	\$2630	2675	2675
48	\$3318	3362	3362

Step 5. Surface Finish

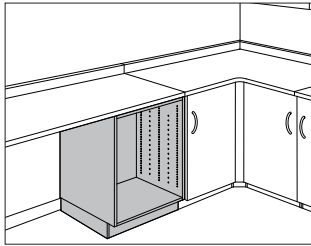
HF	inner tone light [A]	+\$0
LT	light tone [A]	+\$0
LU	soft white [A]	+\$0
WN	warm grey neutral [A]	+\$0
76	light brown walnut [A]	+\$300
91	white [A]	+\$300
HM	natural maple [A]	+\$300
HX	aged cherry [A]	+\$300
OG	honey maple [A]	+\$475

Step 6. Pull Option/Finish

NN	none [A]	+\$0
BK	black [A]	+\$0
NH	brushed nickel [A]	+\$0

Base Cabinet

CG502.



Product Information

Description

This cabinet has adjustable glides and an open front and can be specified with doors, drawers, and shelves. Cabinet height without work surface adjusts from 34" to 35½" high.

Notes

Order work surface (CG211. or CG212.) or corner work surface (CG218. or CG219.) separately.

Order interior components separately:

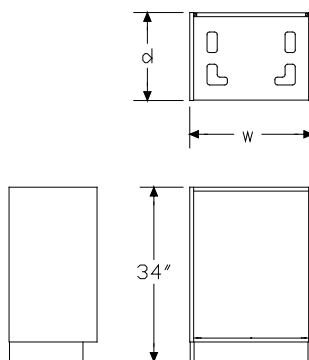
- Base cabinet bottle drawer (CG537.)
- Base cabinet drawer (CG532. or CG533.)
- Base cabinet pullout shelf (CG517.)
- Base cabinet shelf (CG516.)
- Interior cabinet adapter (CG591.)
- Waste container holder (CG903.)

To enclose 18"- to 24"-wide cabinet, order base cabinet door (CG538. or CG539.) separately.

To enclose 30"-wide cabinet, order base cabinet double doors (CG548.) separately.

Doors cannot be used in front of cabinet drawers.

Dimensions



Specification Information

Step 1.

CG502.

Step 2. Depth

18	18" deep
24	24" deep
30	30" deep

Step 3. Width

18	18" wide
24	24" wide
30	30" wide

Prices for Steps 1-3.

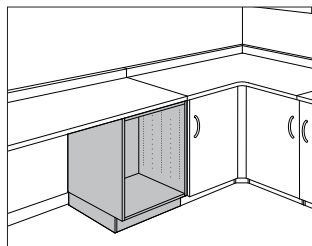
	18	24	30
CG502. 18	\$488	525	560
24	\$548	588	631
30	\$620	661	700

Step 4. Surface Finish

HF	inner tone light	+\$0
LT	light tone	+\$0
LU	soft white	+\$0
WN	warm grey neutral	+\$0
76	light brown walnut	+\$55
91	white	+\$55
HM	natural maple	+\$55
HX	aged cherry	+\$55
OG	honey maple	+\$80

ADA Base Cabinet

CG814.



Product Information

Description

This cabinet has adjustable glides and an open front and can be specified with drawers and shelves. Cabinet height without work surface adjusts from 32" to 33½" high.

Notes

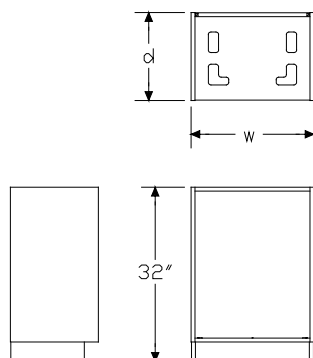
Order work surface (CG211. or CG212.) or corner work surface (CG218. or CG219.) separately.

Height conforms to guidelines of Americans with Disability Act (ADA).

Order interior components separately:

- Base cabinet bottle drawer (CG537.)
- Base cabinet drawer (CG532. or CG533.)
- Base cabinet pullout shelf (CG517.)
- Base cabinet shelf (CG516.)

Dimensions



Specification Information

Step 1.

CG814.

Step 2. Depth

- 18** 18" deep
24 24" deep

Step 3. Width

- 18** 18" wide
24 24" wide
30 30" wide

Prices for Steps 1-3.

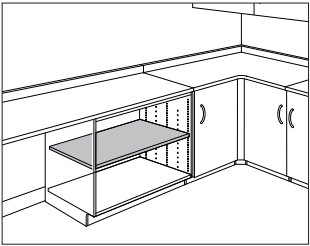
	18	24	30
CG814. 18	\$525	565	603
24	\$589	633	679

Step 4. Surface Finish

HF	inner tone light	+\$0
LT	light tone	+\$0
LU	soft white	+\$0
WN	warm grey neutral	+\$0
76	light brown walnut	+\$50
91	white	+\$50
HM	natural maple	+\$50
HX	aged cherry	+\$50
OG	honey maple	+\$75

Base Cabinet Shelf

CG516.

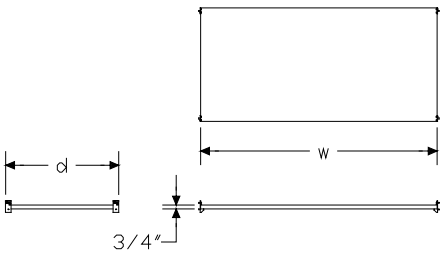


Product Information

Description
This shelf mounts inside a base cabinet or storage cabinet. It is height adjustable in 1 1/4" increments. Attachment hardware is included.

- Notes**
- Order cabinet separately:
- ADA base cabinet (CG814.)
 - Base cabinet (CG502.)
 - Storage cabinet (CG716.)

Dimensions



Specification Information

Step 1.
CG516.

Step 2. Depth

18	18" deep
24	24" deep
30	30" deep

Step 3. Width

For 18" deep (18) or 30" deep (30)

18	18" wide
24	24" wide
30	30" wide
48	48" wide

For 24" deep (24)

18	18" wide
24	24" wide
30	30" wide
36	36" wide
48	48" wide

Prices for Steps 1-3.

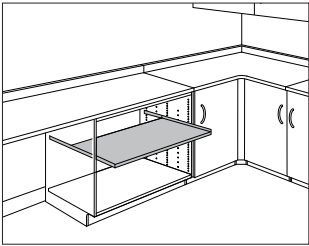
	18	24	30	36	48
CG516. 18	\$118	141	169	—	225
24	\$153	183	211	272	294
30	\$169	200	234	—	334

Step 4. Surface Finish

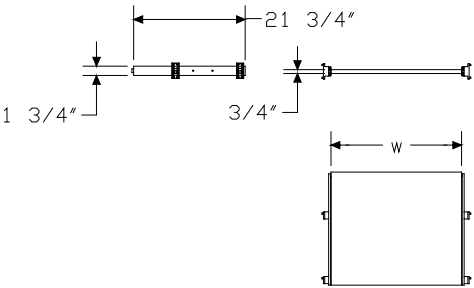
HF	inner tone light	+\$0
LT	light tone	+\$0
LU	soft white	+\$0
WN	warm grey neutral	+\$0
76	light brown walnut	+\$20
91	white	+\$20
HM	natural maple	+\$20
HX	aged cherry	+\$20
OG	honey maple	+\$30

Base Cabinet Pullout Shelf

CG517.



Product Information
Description
This pullout shelf mounts inside a 24"- or 30"-deep base cabinet or 24"-deep storage cabinet. It is height adjustable in 1 1/4" increments. The shelf cannot attach at a door hinge location. Attachment hardware is included.
Notes
Order cabinet separately:
• ADA base cabinet (CG814.24)
• Base cabinet (CG502.24 or CG502.30)
• Storage cabinet (CG716.24)
Dimensions

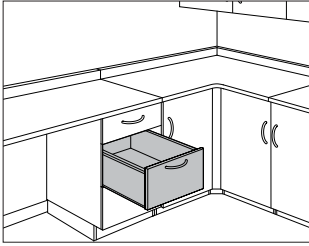


Specification Information
Step 1.
CG517.24
Step 2. Width
18 18" wide
24 24" wide
30 30" wide
36 36" wide
Prices for Steps 1-2.
CG517.24 18 \$272
24 \$321
30 \$364
36 \$421
Step 3. Surface Finish
HF inner tone light +\$0
LT light tone +\$0
LU soft white +\$0
WN warm grey neutral +\$0
76 light brown walnut +\$25
91 white +\$25
HM natural maple +\$25
HX aged cherry +\$25
OG honey maple +\$40

Casework Base Cabinet Components

Base Cabinet Drawer

CG532.
CG533.



Product Information

Description

This drawer mounts inside a base cabinet or storage cabinet. It is available in 3 sizes. Attachment hardware is included.

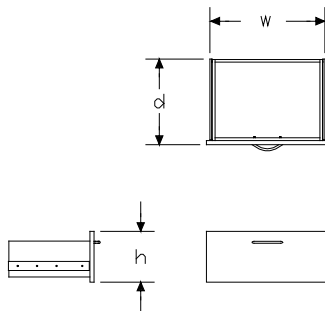
Notes

Order cabinet separately:

- ADA base cabinet (CG814.)
- Base cabinet (CG502.)
- Storage cabinet (CG716.)

For keyed-alike locks, order lock plugs separately. See Keyed-Alike Information in Appendices.

Dimensions



Specification Information

Step 1.

CG53

Step 2. Depth

- 15³/₄" deep
- 21³/₄" deep

Step 3. Height

- 04 small, 5" high
- 08 medium, 7¹/₂" high
- 12 large, 10" high

Step 4. Width

- 18 18" wide
- 24 24" wide
- 30 30" wide

Step 5. Lock

- N no lock
- L keyed differently
- K keyed alike

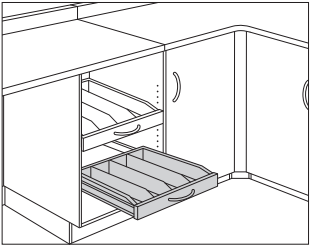
Prices for Steps 1-5.

	N	L	K
CG532. 04 18	\$209	270	270
24	\$244	304	304
30	\$279	338	338
08 18	\$232	293	293
24	\$271	331	331
30	\$310	372	372
12 18	\$259	320	320
24	\$296	360	360
30	\$337	397	397
CG533. 04 18	\$215	275	275
24	\$249	312	312
30	\$285	346	346
08 18	\$237	298	298
24	\$276	337	337
30	\$319	378	378
12 18	\$265	326	326
24	\$302	365	365
30	\$346	406	406

Base Cabinet Drawer *continued*

Step 6. Surface Finish		
HF	inner tone light	+\$0
LT	light tone	+\$0
LU	soft white	+\$0
WN	warm grey neutral	+\$0
76	light brown walnut	+\$30
91	white	+\$30
HM	natural maple	+\$30
HX	aged cherry	+\$30
OG	honey maple	+\$45
Step 7. Pull Option/Finish		
NN	none	+\$0
BK	black	+\$0
NH	brushed nickel	+\$0

Base Cabinet Bottle DrawerCG537.



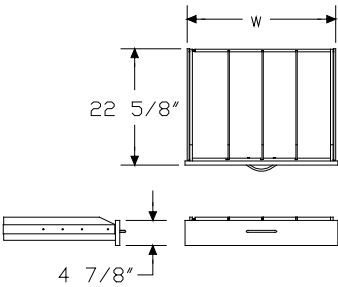
Product Information

Description

This 6"-high drawer mounts in a base cabinet or storage cabinet. It has a partial-height front for easy access to contents. The drawer is available in 3 widths. The 15⁵/₈"-wide drawer includes 2 dividers; the 21⁵/₈"-wide drawer includes 3 dividers; and the 27⁵/₈"-wide drawer includes 4 dividers. Attachment hardware is included.

- Notes**
- Order cabinet separately:
- ADA base cabinet (CG814.24)
 - Base cabinet (CG502.24 or CG502.30)
 - Storage cabinet (CG716.24)

Dimensions



Specification Information

Step 1.

CG537.08

Step 2. Width		
18	15 ⁵ / ₈ " wide	
24	21 ⁵ / ₈ " wide	
30	27 ⁵ / ₈ " wide	

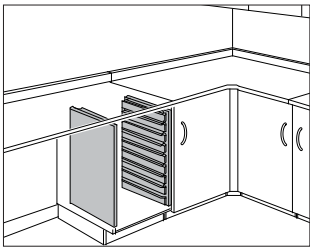
Prices for Steps 1-2.		
CG537.08	18	\$384
	24	\$446
	30	\$510

Step 3. Surface Finish		
HF	inner tone light	+\$0
LT	light tone	+\$0
LU	soft white	+\$0
WN	warm grey neutral	+\$0
76	light brown walnut	+\$40
91	white	+\$40
HM	natural maple	+\$40
HX	aged cherry	+\$40
OG	honey maple	+\$60

Step 4. Pull Option/Finish		
NN	none	+\$0
BK	black	+\$0
NH	brushed nickel	+\$0

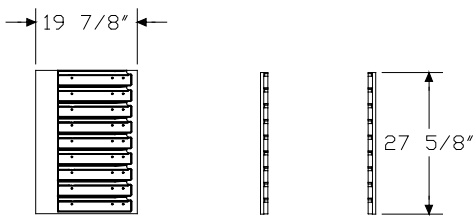
Interior Cabinet Adapter

CG591.



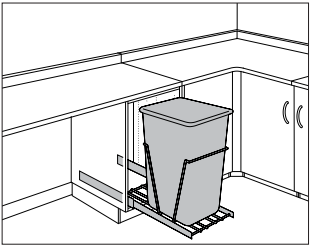
Product Information
Description
This adapter mounts inside a 24"-wide base cabinet. It has 9 slots at 3" intervals to support Co/Struc® storage components and accessories. The adapter can hold lockable drawers. Attachment hardware is included.
Notes
Order base cabinet (CG502.2424) separately.
Order storage components separately:
<ul style="list-style-type: none">• A-, B-, or C-size drawer (CO207, CO208, or CO209)• C tray/shelf (CO203)• C wire shelf (CO252)
Dimensions

Specification Information
Step 1.
CG591.3218
\$686
Step 2. Surface Finish
HF inner tone light
LT light tone
LU soft white
WN warm grey neutral
+\$0
+\$0
+\$0
+\$0



Waste Container Holder

CG903.



Product Information

Description

This holder mounts inside a 24"-deep base cabinet. Finish is white. Wastebasket and attachment hardware are included.

Notes

Order base cabinet (CG502.2424) separately.

Dimensions

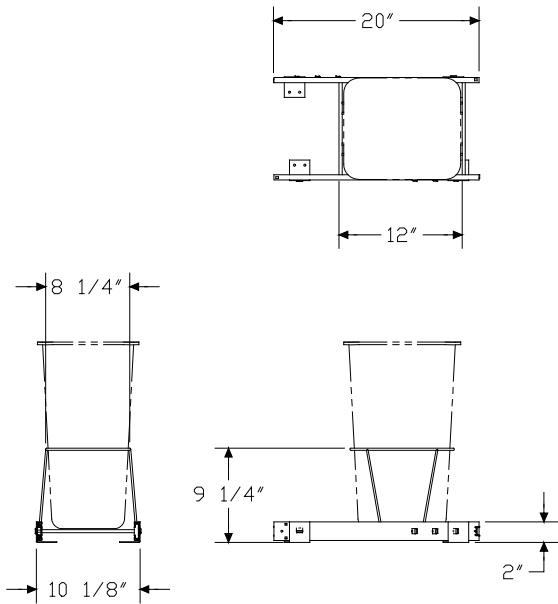
Specification Information

Step 1.

CG903.

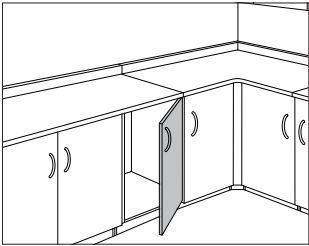
\$387

Casework Base Cabinet Components

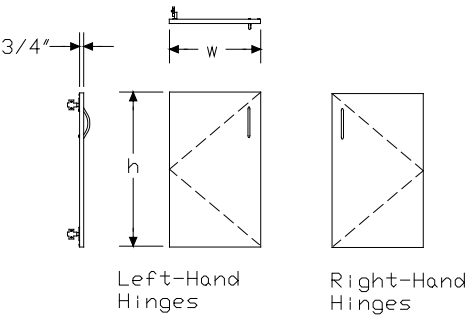


Base Cabinet Door

CG538.
CG539.



Product Information
Description
This door encloses a base cabinet. Attachment hardware is included.
Notes
Order base cabinet (CG502.) separately.
To enclose base cabinet without drawers, specify 30"-high door. To enclose base cabinet with small drawer, specify 25"-high door. To enclose base cabinet with medium drawer, specify 22"-high door.
For keyed-alike locks, order lock plugs separately. See Keyed-Alike Information in Appendices.
Dimensions



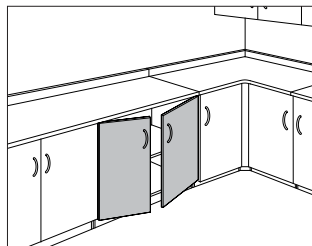
Specification Information
Step 1.
CG53
Step 2. Hinge Location
8. left-hand hinges
9. right-hand hinges
Step 3. Height
22 22" high
25 25" high
30 30" high
Step 4. Width
18 18" wide
24 24" wide
Step 5. Lock
N no lock
L keyed differently
K keyed alike

Prices for Steps 1-5.				
	N	L	K	
CG538.	22 18	\$204	267	267
	24	\$259	320	320
	25 18	\$229	290	290
	24	\$291	351	351
	30 18	\$258	319	319
	24	\$330	389	389
CG539.	22 18	\$204	267	267
	24	\$259	320	320
	25 18	\$229	290	290
	24	\$291	351	351
	30 18	\$258	319	319
	24	\$330	389	389

Step 6. Surface Finish		
HF	inner tone light	+\$0
LT	light tone	+\$0
LU	soft white	+\$0
WN	warm grey neutral	+\$0
76	light brown walnut	+\$30
91	white	+\$30
HM	natural maple	+\$30
HX	aged cherry	+\$30
OG	honey maple	+\$45
Step 7. Pull Option/Finish		
NN	none	+\$0
BK	black	+\$0
NH	brushed nickel	+\$0

Base Cabinet Double Doors

CG548.



Product Information

Description

These doors enclose a base cabinet. Attachment hardware is included.

Notes

Order base cabinet (CG502.) separately.

To enclose base cabinet without drawers, specify 30"-high doors.

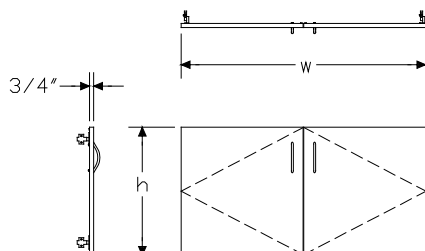
To enclose base cabinet with small drawer, specify 25"-high doors.

To enclose base cabinet with medium drawer, specify 22"-high doors.

Double doors with lock option are controlled by 1 lock.

For keyed-alike locks, order lock plugs separately. See Keyed-Alike Information in Appendices.

Dimensions



Specification Information

Step 1.

CG548.

Step 2. Height

22 22" high

25 25" high

30 30" high

Step 3. Width

For 22" high (22) or 30" high (30)

30 30" wide

36 36" wide

48 48" wide

For 25" high (25)

30 30" wide

48 48" wide

Step 4. Lock

N no lock

L keyed differently

K keyed alike

Prices for Steps 1-4.

	N	L	K
CG548. 22 30	\$315	376	376
36	\$400	462	462
48	\$413	474	474
25 30	\$330	389	389
48	\$419	479	479
30 30	\$351	413	413
36	\$479	539	539
48	\$542	602	602

Step 5. Surface Finish

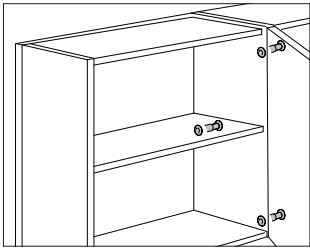
HF	inner tone light	+\$0
LT	light tone	+\$0
LU	soft white	+\$0
WN	warm grey neutral	+\$0
76	light brown walnut	+\$40
91	white	+\$40
HM	natural maple	+\$40
HX	aged cherry	+\$40
OG	honey maple	+\$60

Base Cabinet Double Doors *continued*

Step 6. Pull Option/Finish		
NN	none	+\$0
BK	black	+\$0
NH	brushed nickel	+\$0

Ganging Hardware

CG991.

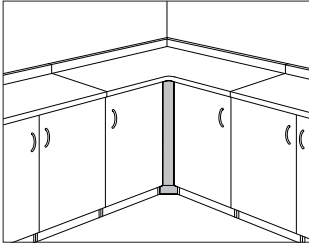


Product Information
Description
This hardware joins 2 side-by-side cabinets and eliminates gaps. 3 fasteners are recommended for each set of cabinet connections. Package contains 50.

Specification Information
Step 1.
CG991. \$181

Base Cabinet Filler

CG598.
CG599.

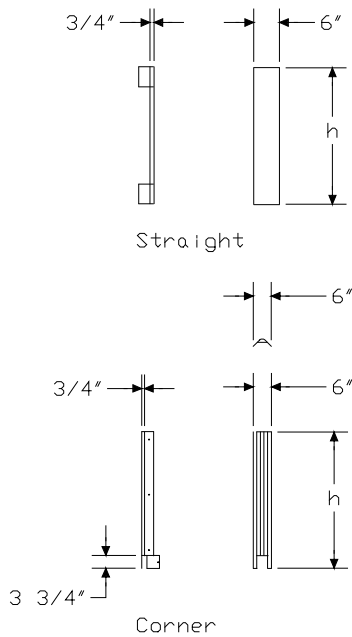


Product Information

Description

This 6"-wide component fills space in a run of base cabinets or storage cabinets. The straight filler fills the space between a run of base cabinets and the wall. The corner filler fills the corner space where 2 runs of base cabinets meet. Attachment hardware is included.

Dimensions



Specification Information

Step 1.

CG59

Step 2. Type

- 8. straight
- 9. corner

Step 3. Height

For straight (8.)

- 34 34" high for ADA base
- 36 36" high for standard base
- 80 80" high for storage cabinets

For corner (9.)

- 34 34" high for ADA base
- 36 36" high for standard base

Prices for Steps 1-3.

CG598. 34	\$201
36	\$208
80	\$353
<hr/>	
CG599. 34	\$157
36	\$162

Step 4. Surface Finish

For straight (8.)

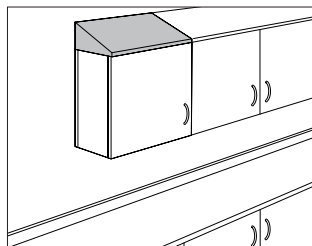
HF	inner tone light	+\$0
LT	light tone	+\$0
LU	soft white	+\$0
WN	warm grey neutral	+\$0
76	light brown walnut	+\$20
91	white	+\$20
HM	natural maple	+\$20
HX	aged cherry	+\$20
OG	honey maple	+\$30

For corner (9.)

HF	inner tone light	+\$0
LT	light tone	+\$0
LU	soft white	+\$0
WN	warm grey neutral	+\$0
91	white	+\$20

Sloped Cabinet Top

CG396.



Product Information

Description

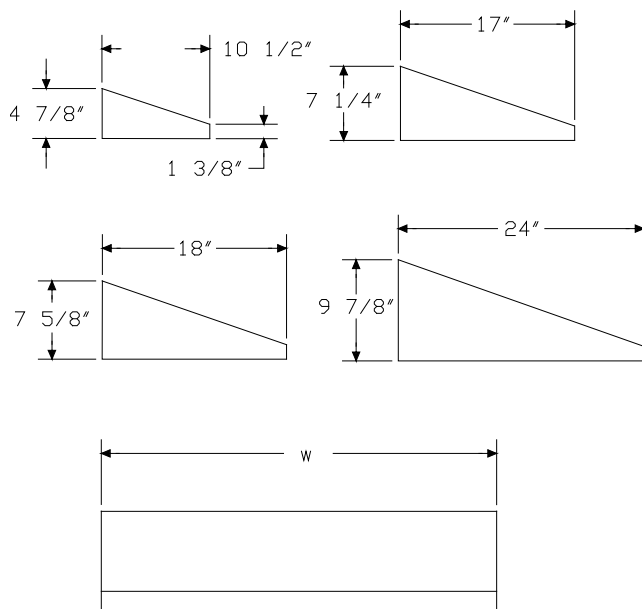
This top attaches to an overhead cabinet or storage cabinet. It is sloped to ease cleaning and prevent the stacking of materials on top of the cabinet. Attachment hardware is included.

Notes

Order 1 of the following support components separately:

- Overhead cabinet with door (CG301., CG302., CG304., CG305., CG331., CG332., CG334., or CG335.)
- Overhead cabinet with double doors (CG315., CG318., CG325., or CG328.)
- Storage cabinet (CG700., CG701., CG702., CG703., CG715., CG716., or CG719.)

Dimensions



Specification Information

Step 1.

CG396.

Step 2. Depth

- 09** 10 1/2" deep
- 16** 17" deep
- 18** 18" deep
- 24** 24" deep

Step 3. Width

For 10 1/2" deep (09) or 17" deep (16)

- 24** 24" wide
- 30** 30" wide
- 36** 36" wide
- 48** 48" wide

For 18" deep (18) or 24" deep (24)

- 24** 24" wide
- 30** 30" wide
- 48** 48" wide

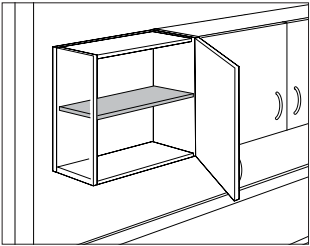
Prices for Steps 1-3.

	24	30	36	48
CG396. 09	\$142	167	190	237
16	\$190	214	237	283
18	\$201	226	—	295
24	\$248	273	—	343

Step 4. Surface Finish

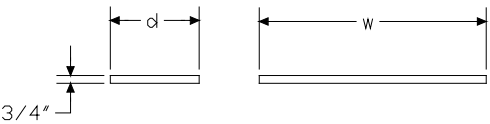
91	white			+\$0
HF	inner tone light			+\$0
LT	light tone			+\$0
LU	soft white			+\$0
WN	warm grey neutral			+\$0

Add-On Shelf, Overhead CabinetCG387.



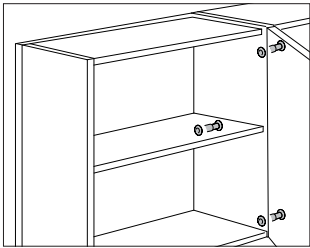
Product Information
Description
This shelf fits inside an overhead cabinet and is used as an additional shelf. Attachment hardware is included.
Notes
Order 1 of the following support components separately:
• Overhead cabinet with door (CG301., CG302., CG304., CG305., CG331., CG332., CG334., or CG335.)
• Overhead cabinet with double doors (CG315., CG318., CG325., or CG328.)
Dimensions

Specification Information				
Step 1.				
CG387.				
Step 2. Depth				
09	9" deep			
16	16" deep			
Step 3. Width				
24	22 ³ / ₄ " wide			
30	28 ³ / ₄ " wide			
36	34 ³ / ₄ " wide			
48	46 ³ / ₄ " wide			
Prices for Steps 1-3.				
	24	30	36	48
CG387. 09	\$78	80	84	101
16	\$91	97	104	122
Step 4. Shelf Finish				
HF	inner tone light			+\$0
LT	light tone			+\$0
LU	soft white			+\$0
WN	warm grey neutral			+\$0
76	light brown walnut			+\$10
91	white			+\$10
HM	natural maple			+\$10
HX	aged cherry			+\$10
OG	honey maple			+\$15



Ganging Hardware

CG991.

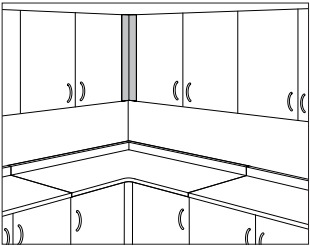


Product Information
Description
This hardware joins 2 side-by-side cabinets and eliminates gaps. 3 fasteners are recommended for each set of cabinet connections. Package contains 50.

Specification Information
Step 1.
CG991. \$181

Overhead Cabinet Filler

CG398.
CG399.



Product Information

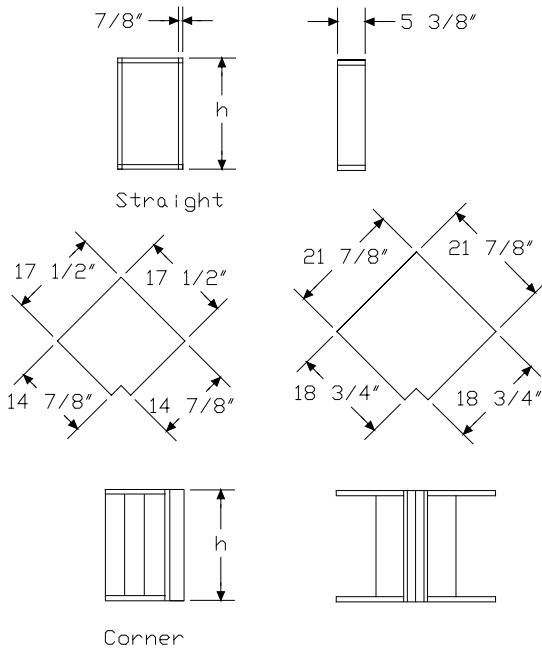
Description

This 6"-wide component fills space in a run of overhead cabinets. The straight filler fills the space between a run of overhead cabinets and the wall. The corner filler fills the corner space where 2 runs of overhead cabinets meet. Attachment hardware is included.

Notes

Corner cabinet filler (CG399.) can be used only with cabinets of equal depth.

Dimensions



Specification Information

Step 1.

CG39

Step 2. Type

- 8. straight
- 9. corner

Step 3. Height

- 24 24" high
- 34 34" high

Step 4. Depth

- 09 10 1/2" deep
- 16 17" deep

Prices for Steps 1-4.

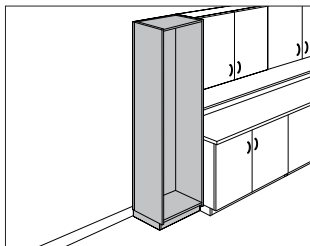
	09	16
CG398. 24	\$255	281
34	\$306	357
CG399. 24	\$638	702
34	\$772	804

Step 5. Surface Finish

HF	inner tone light	+\$0
LT	light tone	+\$0
LU	soft white	+\$0
WN	warm grey neutral	+\$0
76	light brown walnut	+\$35
91	white	+\$35
HM	natural maple	+\$35
HX	aged cherry	+\$35
OG	honey maple	+\$50

Storage Cabinet

CG716.



Product Information

Description

This 80"-high cabinet with adjustable glides has an open front and can be specified with doors, drawers, and shelves.

Notes

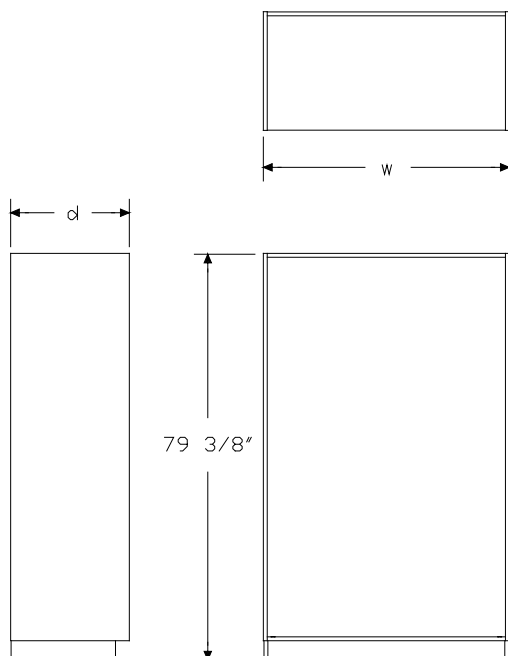
Order interior components separately:

- Base cabinet drawer (CG532. or CG533.)
- Base cabinet shelf (CG516.)
- Distal tube bracket (CV311.)
- Endoscope bracket (CV310.)

To enclose front of cabinet, order storage cabinet door (CG556. or CG557.) or storage cabinet double doors (CG552.) separately. Door cannot be used in front of cabinet drawer.

Order optional sloped cabinet top (CG396.) separately.

Dimensions



Specification Information

Step 1.

CG716.

Step 2. Depth

- 18** 18" deep
24 24" deep

Step 3. Width

- 24** 24" wide
30 30" wide
48 48" wide

Prices for Steps 1-3.

	24	30	48
CG716. 18	\$728	769	862
24	\$856	903	1014

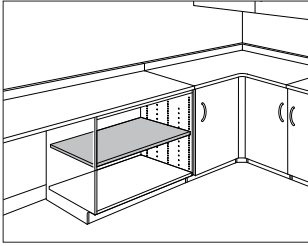
Step 4. Surface Finish

HF	inner tone light	+\$0
LT	light tone	+\$0
LU	soft white	+\$0
WN	warm grey neutral	+\$0
76	light brown walnut	+\$100
91	white	+\$100
HM	natural maple	+\$100
HX	aged cherry	+\$100
OG	honey maple	+\$135

Casework Storage Cabinet Components

Base Cabinet Shelf

CG516.



Product Information

Description

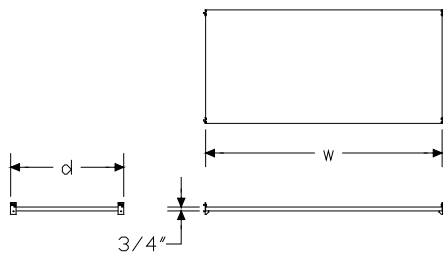
This shelf mounts inside a base cabinet or storage cabinet. It is height adjustable in 1¹/₄" increments. Attachment hardware is included.

Notes

Order cabinet separately:

- ADA base cabinet (CG814.)
- Base cabinet (CG502.)
- Storage cabinet (CG716.)

Dimensions



Specification Information

Step 1.

CG516.

Step 2. Depth

- | | |
|-----------|----------|
| 18 | 18" deep |
| 24 | 24" deep |
| 30 | 30" deep |

Step 3. Width

For 18" deep (18) or 30" deep (30)

- | | |
|-----------|----------|
| 18 | 18" wide |
| 24 | 24" wide |
| 30 | 30" wide |
| 48 | 48" wide |

For 24" deep (24)

- | | |
|-----------|----------|
| 18 | 18" wide |
| 24 | 24" wide |
| 30 | 30" wide |
| 36 | 36" wide |
| 48 | 48" wide |

Prices for Steps 1-3.

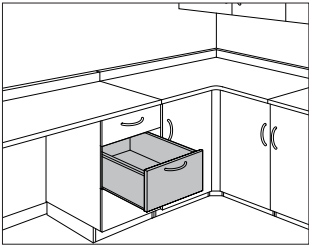
	18	24	30	36	48
CG516. 18	\$118	141	169	—	225
24	\$153	183	211	272	294
30	\$169	200	234	—	334

Step 4. Surface Finish

HF	inner tone light	+\$0
LT	light tone	+\$0
LU	soft white	+\$0
WN	warm grey neutral	+\$0
76	light brown walnut	+\$20
91	white	+\$20
HM	natural maple	+\$20
HX	aged cherry	+\$20
OG	honey maple	+\$30

Base Cabinet Drawer

CG532.
CG533.



Product Information

Description

This drawer mounts inside a base cabinet or storage cabinet. It is available in 3 sizes. Attachment hardware is included.

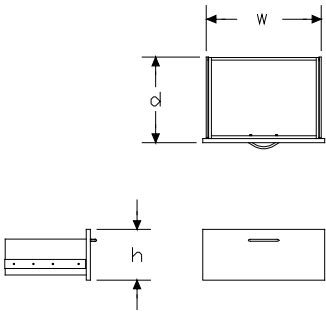
Notes

Order cabinet separately:

- ADA base cabinet (CG814.)
- Base cabinet (CG502.)
- Storage cabinet (CG716.)

For keyed-alike locks, order lock plugs separately. See Keyed-Alike Information in Appendices.

Dimensions



Specification Information

Step 1.

CG53

Step 2. Depth

2. 15³/₄" deep

3. 21³/₄" deep

Step 3. Height

04 small, 5" high

08 medium, 7¹/₂" high

12 large, 10" high

Step 4. Width

18 18" wide

24 24" wide

30 30" wide

Step 5. Lock

N no lock

L keyed differently

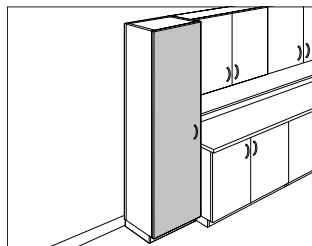
K keyed alike

Prices for Steps 1-5.			
	N	L	K
CG532. 04 18	\$209	270	270
24	\$244	304	304
30	\$279	338	338
08 18	\$232	293	293
24	\$271	331	331
30	\$310	372	372
12 18	\$259	320	320
24	\$296	360	360
30	\$337	397	397
CG533. 04 18	\$215	275	275
24	\$249	312	312
30	\$285	346	346
08 18	\$237	298	298
24	\$276	337	337
30	\$319	378	378
12 18	\$265	326	326
24	\$302	365	365
30	\$346	406	406

Step 6. Surface Finish		
HF	inner tone light	+\$0
LT	light tone	+\$0
LU	soft white	+\$0
WN	warm grey neutral	+\$0
76	light brown walnut	+\$30
91	white	+\$30
HM	natural maple	+\$30
HX	aged cherry	+\$30
OG	honey maple	+\$45
Step 7. Pull Option/Finish		
NN	none	+\$0
BK	black	+\$0
NH	brushed nickel	+\$0

Storage Cabinet Door

CG556.
CG557.



Product Information

Description

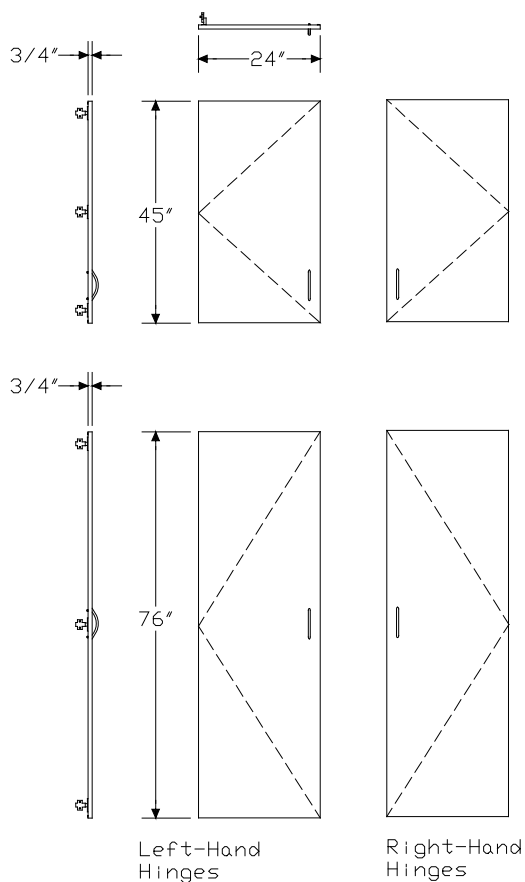
This 24"-wide door encloses a storage cabinet. Attachment hardware is included.

Notes

Order storage cabinet (CG716.) separately.

For keyed-alike locks, order lock plugs separately. See Keyed-Alike Information in Appendices.

Dimensions



Specification Information

Step 1.

CG55

Step 2. Hinge Location

- 6.** left-hand hinges
- 7.** right-hand hinges

Step 3. Height

- 4524** 45" high
- 7624** 76" high

Step 4. Lock

- N** no lock
- L** keyed differently
- K** keyed alike

Prices for Steps 1-4.

	N	L	K
CG556. 4524	\$273	317	317
7624	\$456	500	500
CG557. 4524	\$273	317	317
7624	\$456	500	500

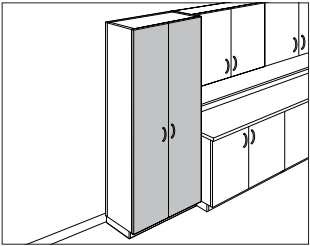
Step 5. Surface Finish

HF	inner tone light	+\$0
LT	light tone	+\$0
LU	soft white	+\$0
WN	warm grey neutral	+\$0
76	light brown walnut	+\$50
91	white	+\$50
HM	natural maple	+\$50
HX	aged cherry	+\$50
OG	honey maple	+\$75

Step 6. Pull Option/Finish

NN	none	+\$0
BK	black	+\$0
NH	brushed nickel	+\$0

Storage Cabinet Double DoorsCG552.



Product Information

Description

These doors enclose a storage cabinet. Attachment hardware is included.

Notes

Order storage cabinet (CG716.) separately.
For keyed-alike locks, order lock plugs separately. See Keyed-Alike Information in Appendices.

Dimensions

Specification Information

Step 1.

CG552.

Step 2. Height

4545" high

7676" high

Step 3. Width

3030" wide

4848" wide

Step 4. Lock

Nno lock

Lkeyed differently

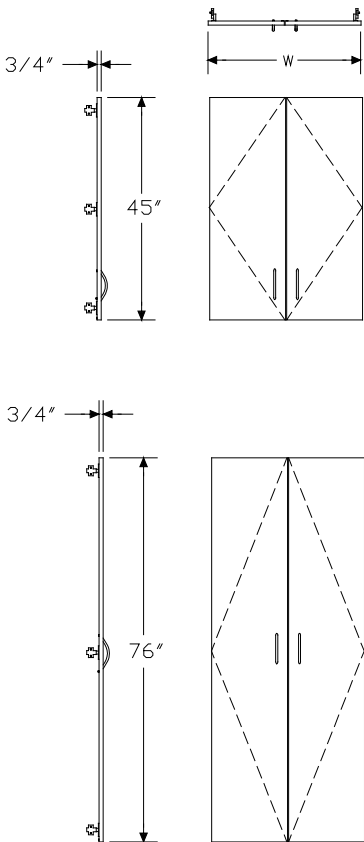
Kkeyed alike

Prices for Steps 1-4.			
	N	L	K
CG552. 45 30	\$501	547	547
48	\$783	827	827
76 30	\$641	685	685
48	\$1001	1046	1046

Step 5. Surface Finish		
HF	inner tone light	+\$0
LT	light tone	+\$0
LU	soft white	+\$0
WN	warm grey neutral	+\$0
76	light brown walnut	+\$70
91	white	+\$70
HM	natural maple	+\$70
HX	aged cherry	+\$70
OG	honey maple	+\$105

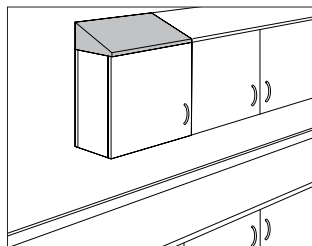
Step 6. Pull Option/Finish		
NN	none	+\$0
BK	black	+\$0
NH	brushed nickel	+\$0

Casework Storage Cabinet Components



Sloped Cabinet Top

CG396.



Product Information

Description

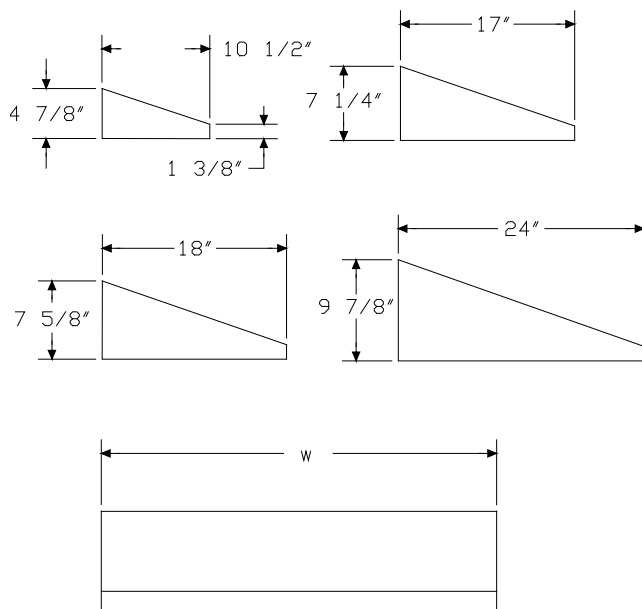
This top attaches to an overhead cabinet or storage cabinet. It is sloped to ease cleaning and prevent the stacking of materials on top of the cabinet. Attachment hardware is included.

Notes

Order 1 of the following support components separately:

- Overhead cabinet with door (CG301., CG302., CG304., CG305., CG331., CG332., CG334., or CG335.)
- Overhead cabinet with double doors (CG315., CG318., CG325., or CG328.)
- Storage cabinet (CG700., CG701., CG702., CG703., CG715., CG716., or CG719.)

Dimensions



Specification Information

Step 1.

CG396.

Step 2. Depth

- 09** 10 1/2" deep
- 16** 17" deep
- 18** 18" deep
- 24** 24" deep

Step 3. Width

For 10 1/2" deep (09) or 17" deep (16)

- 24** 24" wide
- 30** 30" wide
- 36** 36" wide
- 48** 48" wide

For 18" deep (18) or 24" deep (24)

- 24** 24" wide
- 30** 30" wide
- 48** 48" wide

Prices for Steps 1-3.

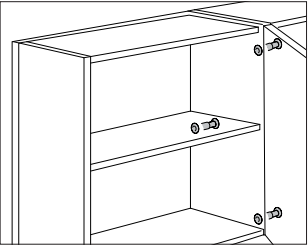
	24	30	36	48
CG396. 09	\$142	167	190	237
16	\$190	214	237	283
18	\$201	226	—	295
24	\$248	273	—	343

Step 4. Surface Finish

91	white	+\$0
HF	inner tone light	+\$0
LT	light tone	+\$0
LU	soft white	+\$0
WN	warm grey neutral	+\$0

Ganging Hardware

CG991.



Product Information

Description

This hardware joins 2 side-by-side cabinets and eliminates gaps. 3 fasteners are recommended for each set of cabinet connections. Package contains 50.

Specification Information

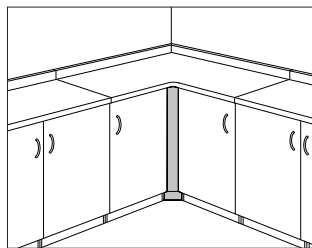
Step 1.

CG991.

\$181

Base Cabinet Filler

CG598.
CG599.

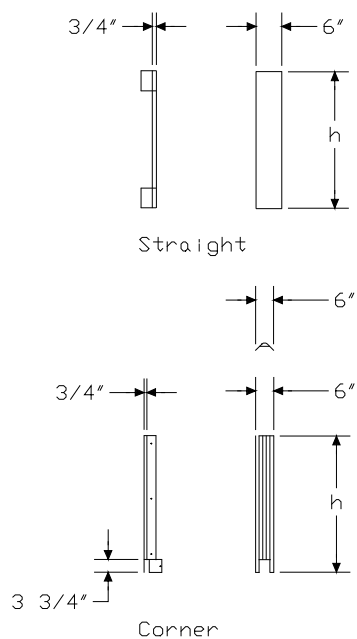


Product Information

Description

This 6"-wide component fills space in a run of base cabinets or storage cabinets. The straight filler fills the space between a run of base cabinets and the wall. The corner filler fills the corner space where 2 runs of base cabinets meet. Attachment hardware is included.

Dimensions



Specification Information

Step 1.

CG59

Step 2. Type

- 8.** straight
- 9.** corner

Step 3. Height

For straight (8.)

- 34** 34" high for ADA base
- 36** 36" high for standard base
- 80** 80" high for storage cabinets

For corner (9.)

- 34** 34" high for ADA base
- 36** 36" high for standard base

Prices for Steps 1-3.

CG598. 34	\$201
36	\$208
80	\$353
CG599. 34	\$157
36	\$162

Step 4. Surface Finish

For straight (8.)

HF	inner tone light	+\$0
LT	light tone	+\$0
LU	soft white	+\$0
WN	warm grey neutral	+\$0
76	light brown walnut	+\$20
91	white	+\$20
HM	natural maple	+\$20
HX	aged cherry	+\$20
OG	honey maple	+\$30

For corner (9.)

HF	inner tone light	+\$0
LT	light tone	+\$0
LU	soft white	+\$0
WN	warm grey neutral	+\$0
91	white	+\$20

Index by Product Name

Casework	
ADA Base Cabinet	page(s) 51
ADA Base Cabinet with Door	19
ADA Base Cabinet with Double Doors	21
ADA Base Cabinet with Drawer and Door	22
ADA Base Cabinet with Drawer and Double Doors	24
ADA Base Cabinet with Drawers	17
ADA Sink Cabinet with Door	25
ADA Sink Cabinet with Double Doors	26
ADA Sink Cabinet with Double Doors and Drawer Front	27
ADA Sink Support, Wall Mounted	28
Add-On Shelf, Overhead Cabinet	66
Backsplash Filler	33
Base Cabinet	50
Base Cabinet Bottle Drawer	56
Base Cabinet Door	59
Base Cabinet Double Doors	61
Base Cabinet Drawer	54, 71
Base Cabinet Filler	64, 77
Base Cabinet Pullout Shelf	53
Base Cabinet Shelf	52, 70
Base Cabinet with Door	7
Base Cabinet with Double Doors	9
Base Cabinet with Drawer and Door	10
Base Cabinet with Drawer and Double Doors	12
Base Cabinet with Drawers	5
Corian® Corner Work Surface	35
Corian® Sidesplash	36
Corian® Work Surface	34
Corner Work Surface	31
Ganging Hardware	63, 67, 76
Interior Cabinet Adapter	57
Overhead Cabinet Filler	68
Overhead Cabinet with Door	38
Overhead Cabinet with Double Doors	40
Overhead Cabinet with Double Glass Doors	44
Overhead Cabinet with Glass Door	42
Sidesplash	32
Sink Cabinet with Door	13
Sink Cabinet with Door and Drawer Front	15
Sink Cabinet with Double Doors	14
Sink Cabinet with Double Doors and Drawer Front	16
Sloped Cabinet Top	65, 75
Storage Cabinet	69
Storage Cabinet Door	73
Storage Cabinet Double Doors	74

Storage Cabinet with Door	46
Storage Cabinet with Double Doors	47
Storage Cabinet with Double Glass Doors	49
Storage Cabinet with Glass Door	48
Waste Container Holder	58
Work Surface	29
Work Surface Support	37



Index by Product Number

C2920. Backsplash Filler	page(s) 33
CG211. Work Surface	29
CG212. Corian® Work Surface	34
CG218. Corner Work Surface	31
CG219. Corian® Corner Work Surface	35
CG296. Sidesplash	32
CG297. Corian® Sidesplash	36
CG301. Overhead Cabinet with Door	38
CG302.	
CG304. Overhead Cabinet with Glass Door	42
CG305.	
CG315. Overhead Cabinet with Double Doors	40
CG318. Overhead Cabinet with Double Glass Doors	44
CG325. Overhead Cabinet with Double Doors	40
CG328. Overhead Cabinet with Double Glass Doors	44
CG331. Overhead Cabinet with Door	38
CG332.	
CG334. Overhead Cabinet with Glass Door	42
CG335.	
CG387. Add-On Shelf, Overhead Cabinet	66
CG396. Sloped Cabinet Top	65, 75
CG398. Overhead Cabinet Filler	68
CG399.	
CG502. Base Cabinet	50
CG508. ADA Sink Support, Wall Mounted	28
CG509. Work Surface Support	37
CG516. Base Cabinet Shelf	52, 70
CG517. Base Cabinet Pullout Shelf	53
CG532. Base Cabinet Drawer	54, 71
CG533.	
CG537. Base Cabinet Bottle Drawer	56
CG538. Base Cabinet Door	59
CG539.	
CG548. Base Cabinet Double Doors	61
CG552. Storage Cabinet Double Doors	74
CG556. Storage Cabinet Door	73
CG557.	
CG591. Interior Cabinet Adapter	57
CG598. Base Cabinet Filler	64, 77
CG599.	
CG602. Base Cabinet with Drawers	5
CG604.	
CG608. Base Cabinet with Door	7
CG609.	
CG614. Base Cabinet with Double Doors	9
CG625. Base Cabinet with Drawer and Double Doors	12



CG626. Base Cabinet with Drawer and Door	10
CG627.	
CG635. Sink Cabinet with Double Doors	14
CG636. Sink Cabinet with Door	13
CG637.	
CG642. Sink Cabinet with Double Doors and Drawer Front	16
CG643. Sink Cabinet with Door and Drawer Front	15
CG644.	
CG700. Storage Cabinet with Door	46
CG701.	
CG702. Storage Cabinet with Glass Door	48
CG703.	
CG715. Storage Cabinet with Double Doors	47
CG716. Storage Cabinet	69
CG719. Storage Cabinet with Double Glass Doors	49
CG800. ADA Base Cabinet with Drawers	17
CG801.	
CG802. ADA Base Cabinet with Door	19
CG803.	
CG804. ADA Base Cabinet with Double Doors	21
CG805. ADA Base Cabinet with Drawer and Door	22
CG806.	
CG807. ADA Base Cabinet with Drawer and Double Doors	24
CG808. ADA Sink Cabinet with Door	25
CG809.	
CG810. ADA Sink Cabinet with Double Doors	26
CG813. ADA Sink Cabinet with Double Doors and Drawer Front	27
CG814. ADA Base Cabinet	51
CG903. Waste Container Holder	58
CG991. Ganging Hardware	63, 67, 76



20-Day or Less/Assigned Lead-Time Order Information – Healthcare

20-Day or Less/Assigned Lead-Time Programs

20-day or less and assigned lead-time products are designed for established Herman Miller dealers with pre-approved credit.

Products are distributed from multiple manufacturing facilities across the United States. All products and options not designated by an Assigned Lead-Time icon  will ship in 20 business days or less after being acknowledged by Herman Miller. Products and options designated by an  are on the assigned lead-time program and will ship in 20 days, less than 20 days, or more than 20 days from order acknowledgement.

Ordering Procedure

Please place orders through Order Manager. If this is not available to you, place orders through mail or fax. Verbal purchase orders will not be accepted.

Order Entry fax number: (616) 654 3085.

For more information, contact your Customer Care representative at: (866) 854 3048 EXT 3400

Shipments and Delivery

Per Herman Miller Terms and Conditions.

Changes and Cancellation

Per Herman Miller Terms and Conditions.



Packaging

Packaging varies according to individual product. A surcharge may be added for special packaging requests. Contact Customer Care for specific information.

Keyed-Alike Locks

All components with locks may be specified keyed alike.

Keyed-alike Casework components will be shipped with lock chassis installed. Lock plugs will be shipped separately, tagged for product and location as specified. Installation of lock plugs will be on-site according to instructions provided. Herman Miller Inc., will not be responsible for lock plug installation.

To order keyed-alike locks for Casework components, specify keyed alike. Then place a separate order for plugs and locks:

1. List plug part number and key number (232092-XXX); select a key number (or numbers) between 226 and 427, excluding numbers 408 and 412.
2. List quantity of locks per key number.
3. Indicate this is a no charge order.

Keyed-alike locks are field installed.

A master key can be used to open any lock on a Casework component. To remove lock plugs from existing components, a removal key (#232228) or lock change tool (#234559) is required. Customers interested in ordering master keys, removal keys, or lock change tools should contact Customer Care with a written request.



For more information about our products and services or to see a list of dealers, please visit us at HermanMiller.com or call (800) 851 1196.

This book is recyclable. Printed in U.S.A. on recycled paper.

© 2017 Herman Miller, Inc., Zeeland, Michigan

® **HermanMiller**, ●, Action Office, Aeron, Aside, Avive, Canvas Office Landscape, Caper, Celle, Co/Struc, Eames, Embody, Equa 2, Ergon 3, Ethospace, Exclave, Fine-Tune, FlexFront, Formcoat, Ground Cloth, Herman Miller Healthcare, Layout Studio, Maharam, Meridian, Mirra, Passage, Pellicle, Perspectives, PostureFit, Resolve, Sayl, Setu, Thrive, Tu, Y-Tower, and Z-Axis are among the registered trademarks of Herman Miller, Inc., and its owned subsidiaries.

™ AireWeave, Bubbletack, Cellular Suspension, Compass, Connect, DOT, Durawrap, Everywhere, Flex-Edge, Hopsak 2, Iota, Keyless Entry, Latitude, Lyris 2, Motia, Multiscrim, Nelson, Renew, Stackable, Swoop, TriFlex, and Twist are among the trademarks of Herman Miller, Inc., and its owned subsidiaries.

®Chemsurf® is a registered trademark of Wilsonart International.

Corian® is a registered trademark of E.I. du Pont de Nemours and Company Corporation.

FLEXNET™ is a trademark of Milliken & Company.

Floor Saver Glide® is a registered trademark of Carpin Manufacturing, Inc.

Geiger® is a registered trademark of Geiger International.

Microsoft® and Natural® Keyboard are registered trademarks of Microsoft Corporation.

Place Textiles® is a registered trademark of Place Textiles.