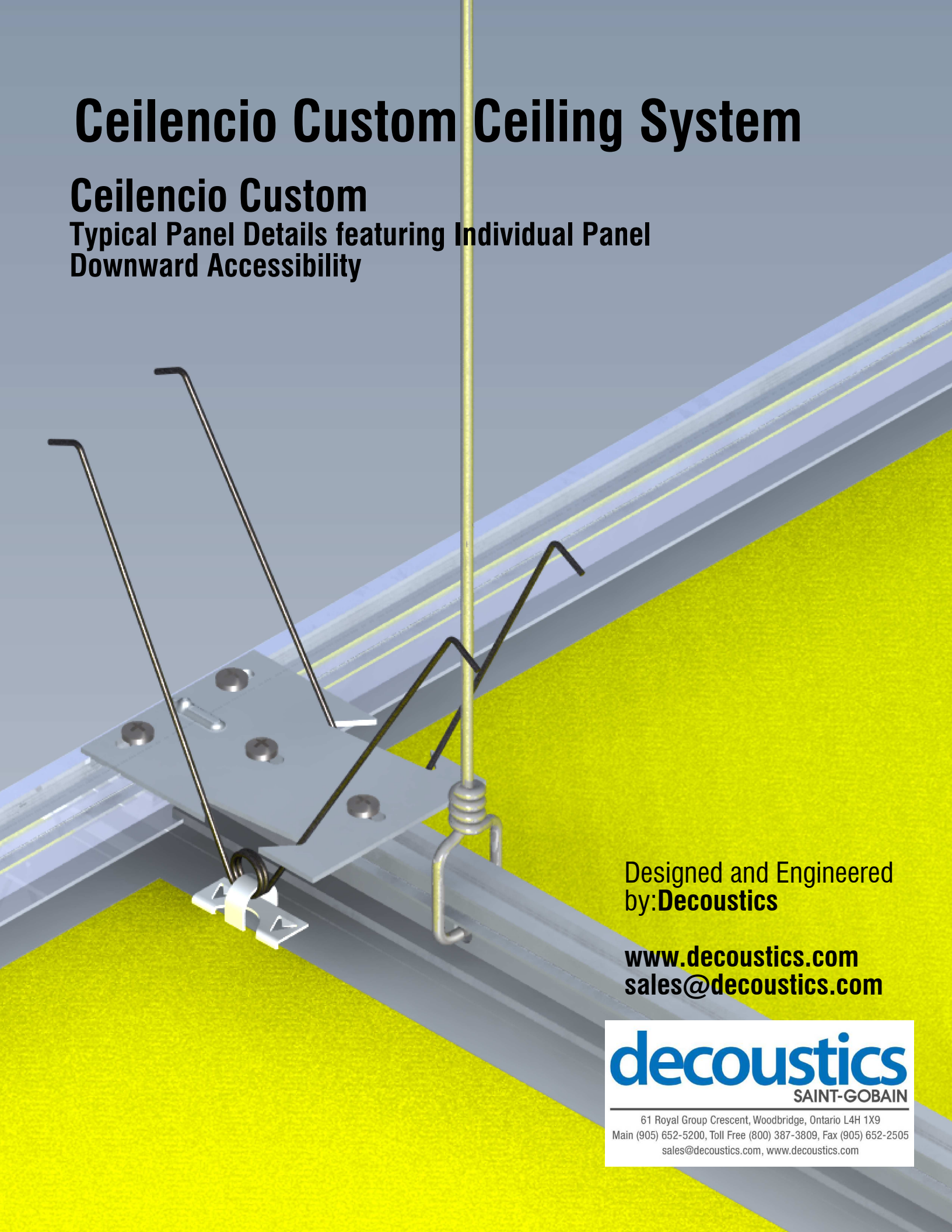


# Ceilencio Custom Ceiling System

## Ceilencio Custom

Typical Panel Details featuring Individual Panel  
Downward Accessibility



Designed and Engineered  
by: **Decoustics**

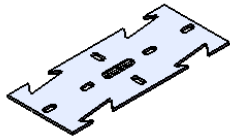
[www.decoustics.com](http://www.decoustics.com)  
[sales@decoustics.com](mailto:sales@decoustics.com)

**decoustics**  
SAINT-GOBAIN

61 Royal Group Crescent, Woodbridge, Ontario L4H 1X9  
Main (905) 652-5200, Toll Free (800) 387-3809, Fax (905) 652-2505  
[sales@decoustics.com](mailto:sales@decoustics.com), [www.decoustics.com](http://www.decoustics.com)

# Ceilencio Custom Suspension Installation Instructions

1. Prior to installation please check and verify that all required components have been received. Using the attached drawings identify all components received.
2. Check and verify the quantities of components received against the quantities required for the project.



Butterfly type B1  
(assemble with Hump up)



Butterfly type B2  
(assemble with Hump up)



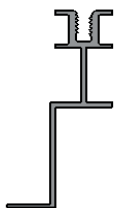
Type "G" Grid



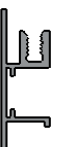
Type "F" Grid



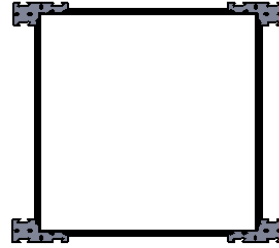
Type "P" Grid



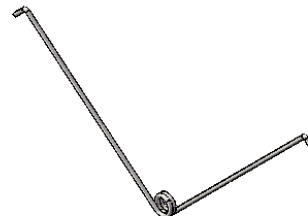
Lay in light fixture grid



Type 'PR' Grid



Pre-assembled  
light frame



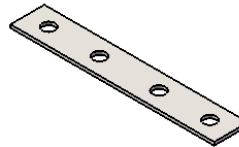
Torsion Spring



KFIA Spring  
retainer  
(screw on type)



Spring retainer (SR 94)  
(snap on type)



Splice Plate



Type A screw  
#10 x 3/8"



Wood Tapping Screw  
#8 x 3/8" SM & #8 x 1/8" Q



TEK screw  
#8 x 1/2"

**decoustics**  
SAINT-GOBAIN

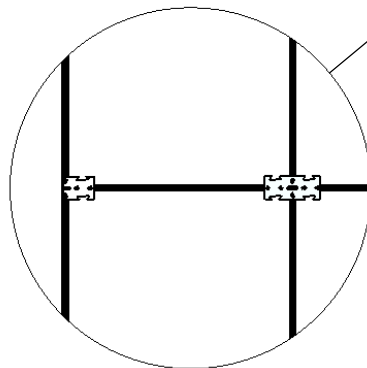
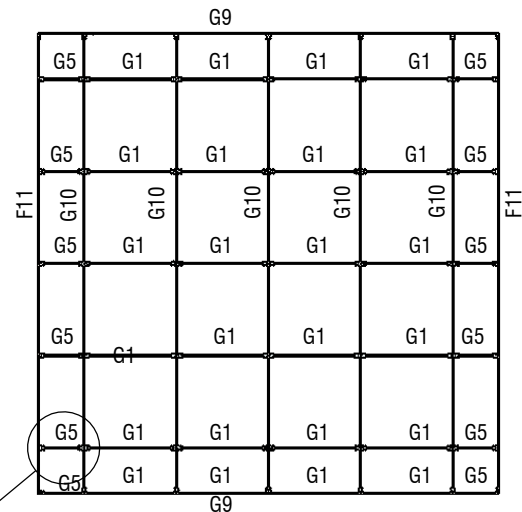
61 Royal Group Crescent, Woodbridge, Ontario L4H 1X9  
Main (905) 652-5200, Toll Free (800) 387-3809, Fax (905) 652-2505  
sales@decoustics.com, www.decoustics.com

### 3. Review installation drawings (grid Layout and Panel Layout)

(Panel Layout)

24	22	22	22	22	24
23	21	21	21	21	23
23	21	21	21	21	23
23	21	21	21	21	23
23	21	21	21	21	23
24	22	22	22	22	24

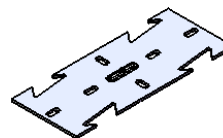
Ceiling Grid Location  
(Reflected Plan)



## Grid Layout Considerations

**Note** - Grid layout shown is typical for panel sizes up to 48" x 48" x 1 1/8" (1220mm x 1220mm x 29mm) thick. For panels exceeding 48" (1220mm), or greater than 1 1/8" (29mm) thick, additional grid cross members, butterflies, springs and hanger wires will be required. For special acoustic panel types (ei. REF, STC, etc.), grid, butterflies, springs and hanger wires will be spaced nominally on 24" (610mm) centers. Please contact **Decoustics** for any project specific questions that you may have.

## Legend



Butterfly type B1  
(assemble with Hump up)



Butterfly type B 2  
(assemble with Hump up)



Type "F" Grid  
F11



Type "G" Grid  
G1

24

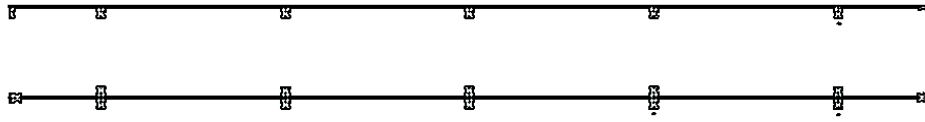
Panel Item Number

**decoustics**  
SAINT-GOBAIN

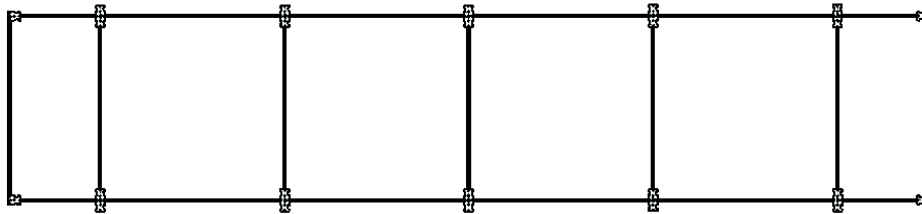
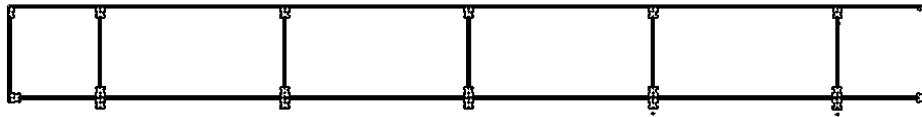
61 Royal Group Crescent, Woodbridge, Ontario L4H 1X9  
Main (905) 652-5200, Toll Free (800) 387-3809, Fax (905) 652-2505  
sales@decoustics.com, www.decoustics.com

# Ceilencio Custom Installation Instructions

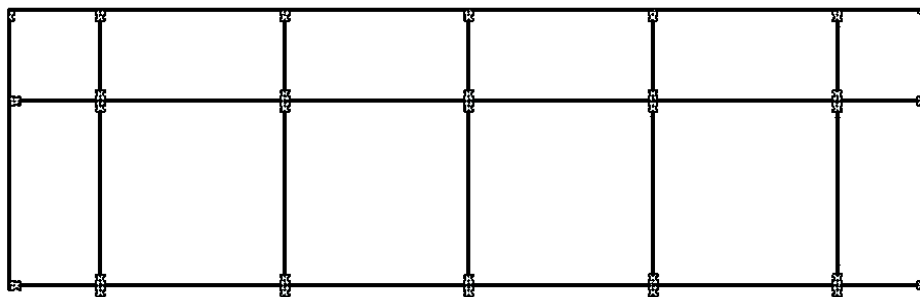
## Grid Assembly Process



4. Layout grid and butterfly components on the floor or other level surface, accurately locate and attach the butterflies (hump up) to the long grid members using the #10-3/8" type A screws. Ensure that the orientation of butterflies matches the project drawings. Attach all splice plates as required using tek screws.



5. Assemble pairs or sections of grid into "Ladders" using the shorter grid members.



6. Hang the assembled "ladders" in their final ceiling locations. It is best to handle workable sizes and fasten these members in place by fastening to existing butterflies. (refer to grid layout drawing - sheet 2 in this example)

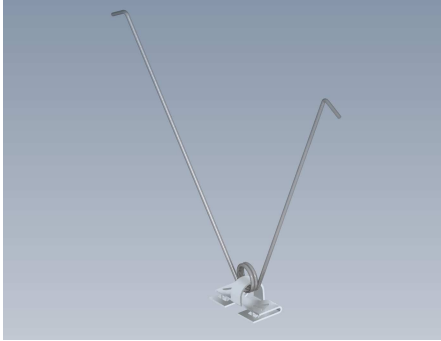
**Note** - Hanger wires must be located adjacent to each butterfly. Appropriate splay wires must be installed for specific seismic applications (ref. CISC guidelines for seismic restraint for direct hung suspended ceiling assemblies).

**decoustics**  
SAINT-GOBAIN

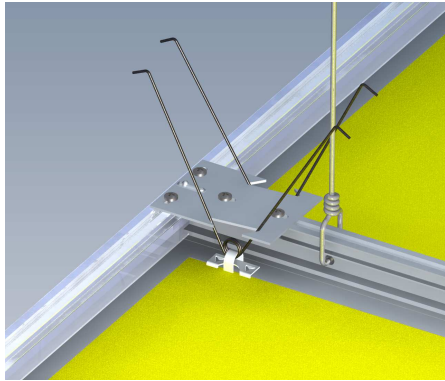
61 Royal Group Crescent, Woodbridge, Ontario L4H 1X9  
Main (905) 652-5200, Toll Free (800) 387-3809, Fax (905) 652-2505  
sales@decoustics.com, www.decoustics.com



# Ceilencio Custom Installation Instructions



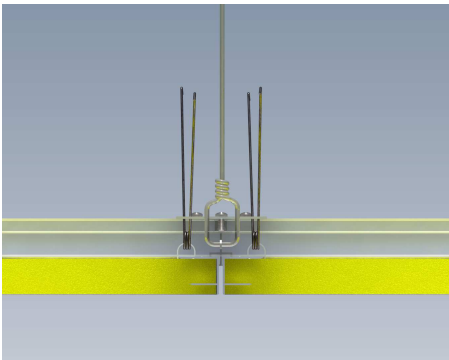
7. Insert torsion spring into retainer clip.  
The spring is now attached and cannot fall out of the retainer.



- 8a. Locate the spring retainer torsion spring assembly to the interior back edge of the ceiling panel with the centre of the spring receiver aligned with the butterfly.



- b. Using a pair of channel lock pliers, or similar, "snap" the spring retainer onto the aluminum panel edge.

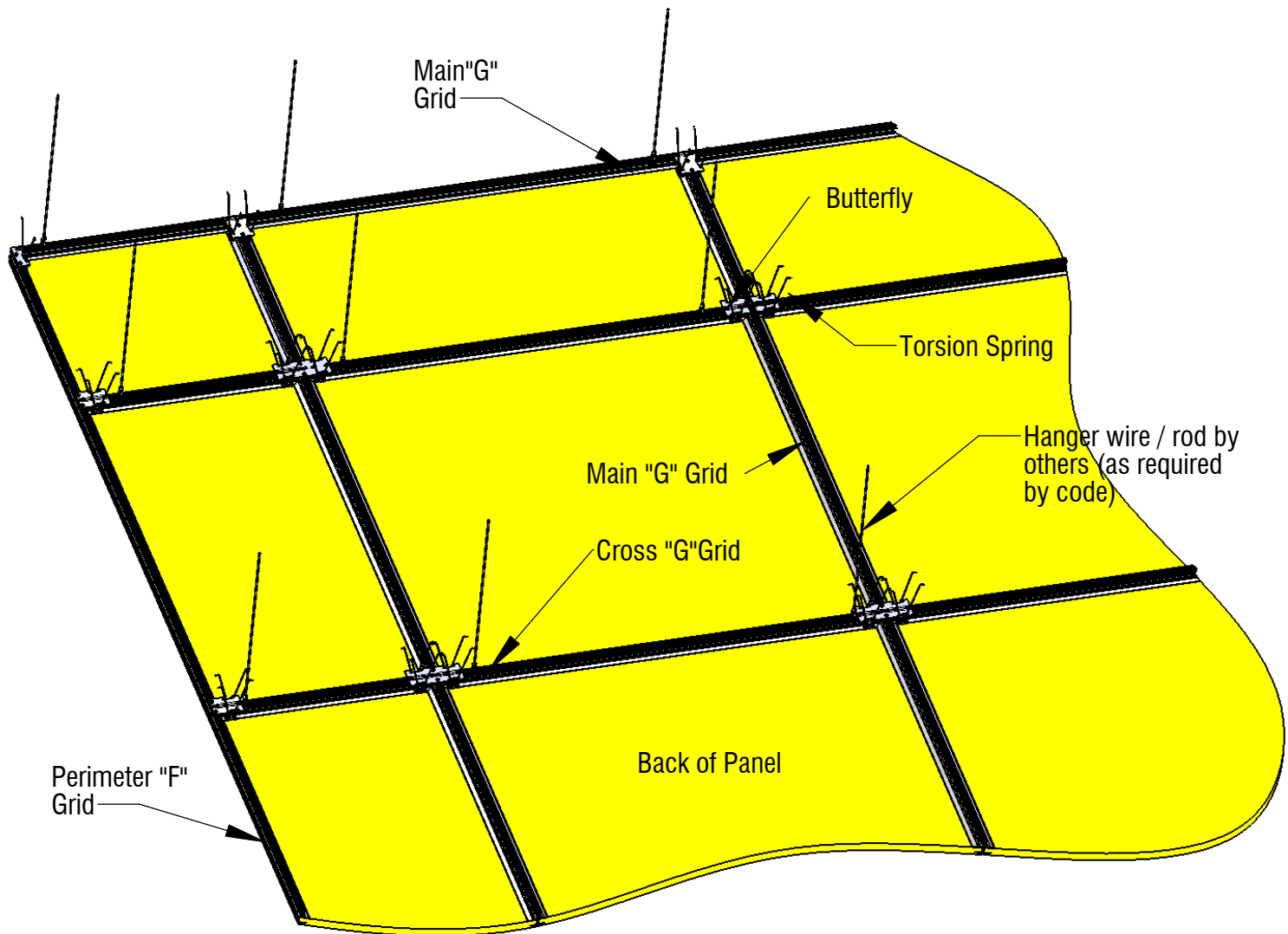


9. When installing the ceiling panels engage springs into the butterflies. When all springs on a panel are engaged push the panel up to secure.

**decoustics**  
SAINT-GOBAIN

61 Royal Group Crescent, Woodbridge, Ontario L4H 1X9  
Main (905) 652-5200, Toll Free (800) 387-3809, Fax (905) 652-2505  
sales@decoustics.com, www.decoustics.com

# Ceilencio Custom Suspension Installation

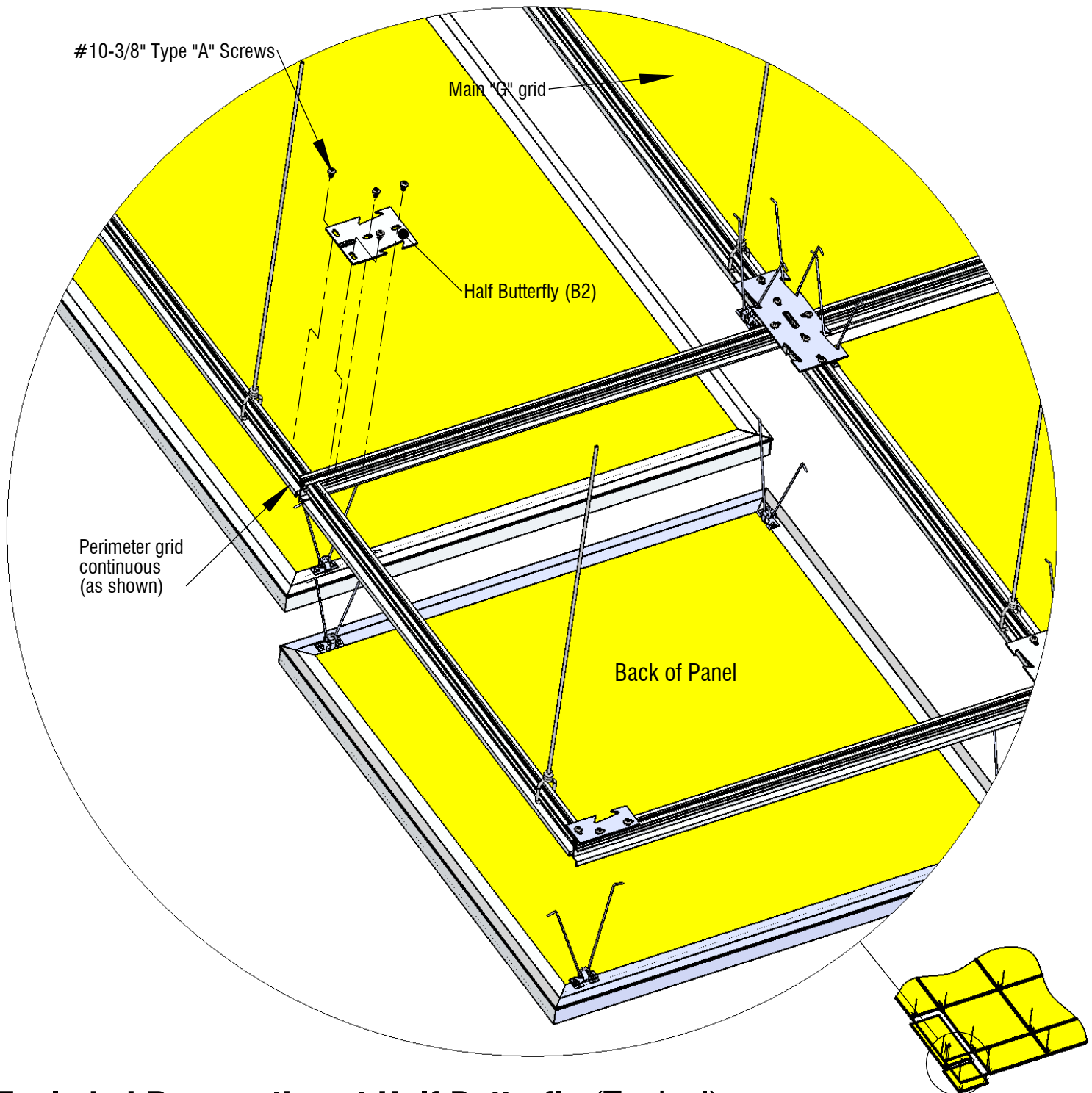


**Perspective View - Back of Ceiling Assembly to Plenum Shown**

**decoustics**  
SAINT-GOBAIN

61 Royal Group Crescent, Woodbridge, Ontario L4H 1X9  
Main (905) 652-5200, Toll Free (800) 387-3809, Fax (905) 652-2505  
sales@decoustics.com, www.decoustics.com

# Ceilencio Custom Suspension Installation

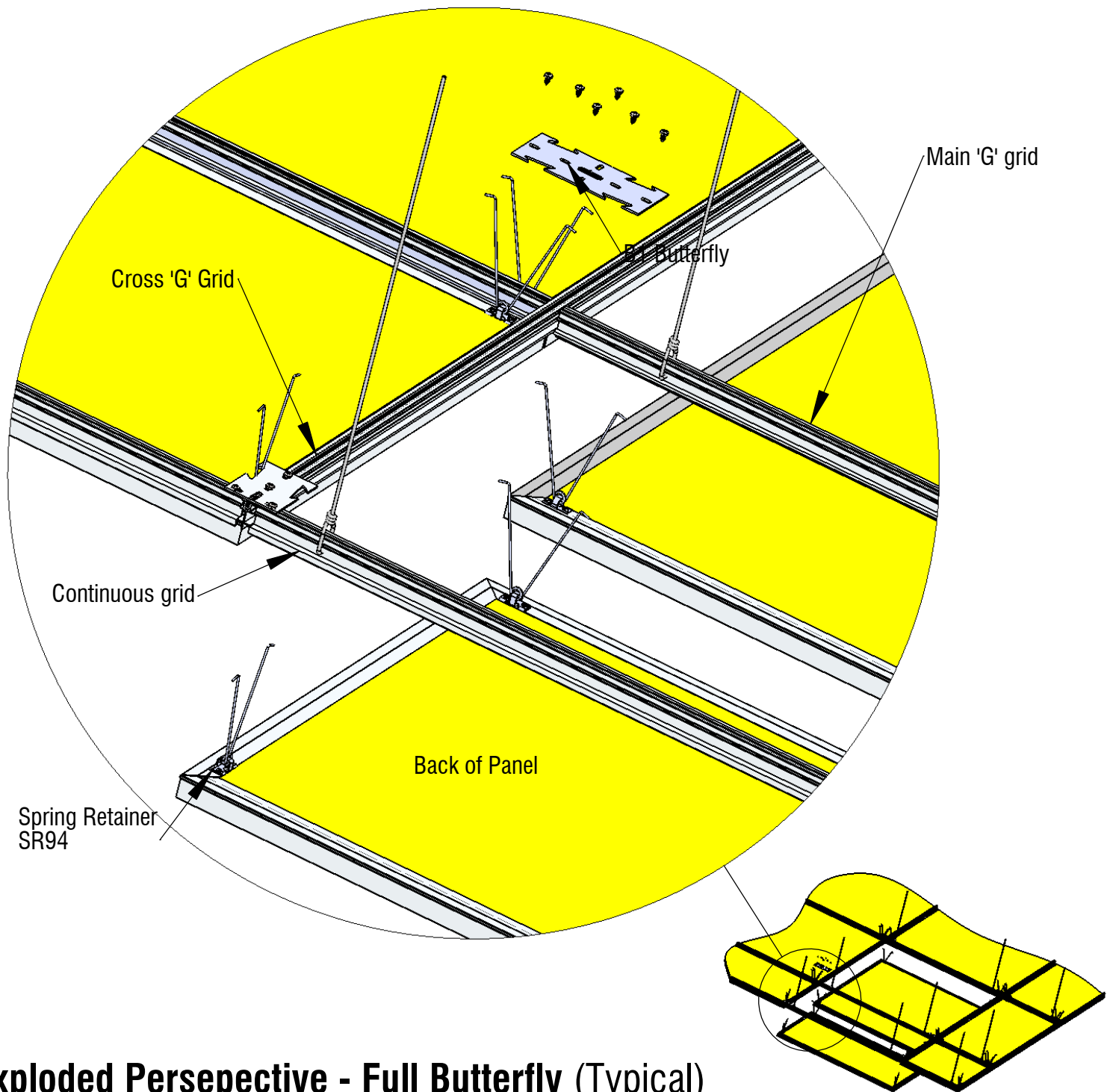


**- Exploded Perspective at Half Butterfly (Typical)**

**decoustics**  
SAINT-GOBAIN

61 Royal Group Crescent, Woodbridge, Ontario L4H 1X9  
Main (905) 652-5200, Toll Free (800) 387-3809, Fax (905) 652-2505  
sales@decoustics.com, www.decoustics.com

# Ceilencio Custom Suspension Installation



**- Exploded Persepective - Full Butterfly (Typical)**

**decoustics**  
SAINT-GOBAIN

61 Royal Group Crescent, Woodbridge, Ontario L4H 1X9  
Main (905) 652-5200, Toll Free (800) 387-3809, Fax (905) 652-2505  
sales@decoustics.com, www.decoustics.com