

Color By Numbers®

Design Solutions™

# AMERICAN

*Distinctly American. Uniquely Crossville.*



# Color By Numbers®

## Design Solutions™

### We've Got Your Number.

Multiply your sophistication factor with perfectly posh wall tile from Crossville. Whether selecting oh-so-chic brights or toned down neutrals, Color by Numbers dials up style with 16 picture-perfect hues. Mix in both satin and gloss sheens, along with coordinated glass accents, for an image greater than the sum of its parts.

Available in 4x8 and 4x12 field tile, advantageous sizing offers almost limitless possibilities. Add matching cove base or bullnose to the mix and complete your masterpiece.

Whether in hospitality, healthcare, home, or beyond, Color by Numbers is the perfect equation to add to the mix.

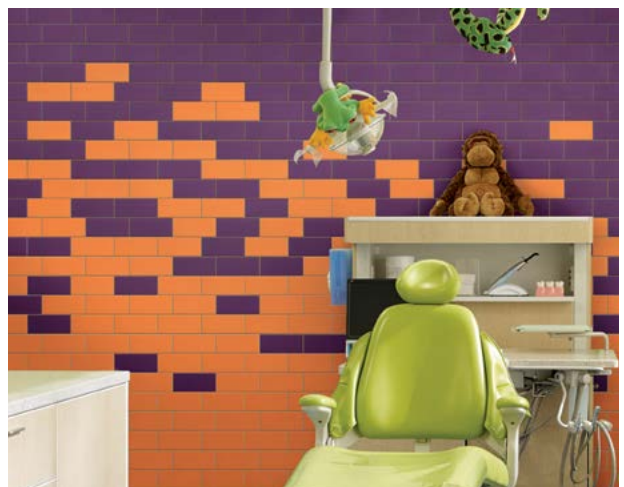


WT07 ▶ Seventh Inning Stretch 4 x 8 Gloss



# Color By Numbers®

Design Solutions™



Top:

**WT03** ▶ Three Hour Tour 4 x 8 Satin

**WT06** ▶ Sixth Sense 4 x 8 Gloss

**WT11** ▶ Eleventh Hour 4 x 8 Gloss

Left:

**WT03** ▶ Three Hour Tour 4 x 8 Gloss

**WT10** ▶ A perfect Ten 4 x 8 Gloss

**WT16** ▶ Sixteen Candles 4 x 8 Gloss

Above Right:

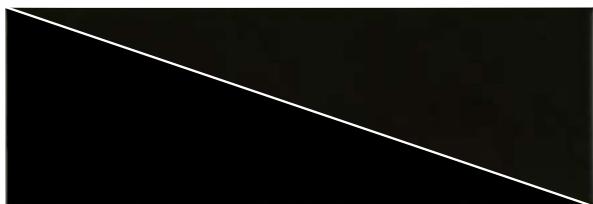
**WT19** ▶ 19th Hole 4 x 8 Gloss

**WT20** ▶ 20/20 Vision 4 x 8 Gloss

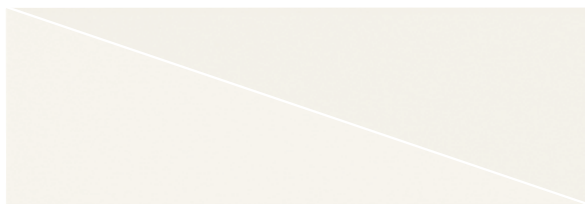
# Color Palette

## Neutral Colors – Gloss/Satin

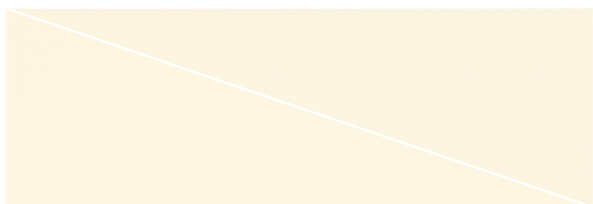
(Available in 4 x 8 and 4 x 12. WT01, WT02 and WT03 also available in 8 x 8.)



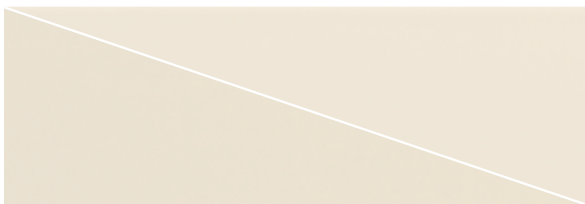
**WT01** ▶ One of a Kind



**WT02** ▶ Tea For Two



**WT03** ▶ Three Hour Tour



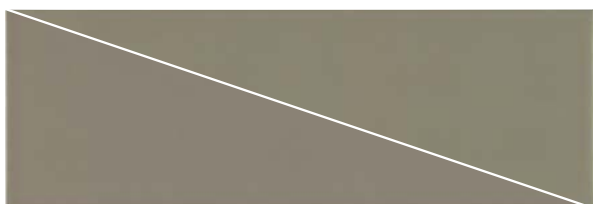
**WT17** ▶ Edge of Seventeen



**WT18** ▶ 1812 Overture



**WT06** ▶ Sixth Sense  
Coordinates with Color Blox A1103 Slinky



**WT07** ▶ Seventh Inning Stretch  
Coordinates with Color Blox A1108 Sea Otter



**WT08** ▶ Eight Days a Week  
Coordinates with Color Blox A1118 Chocolate Candy



**WT09** ▶ Nine Lives  
Coordinates with Color Blox A1113 Blue Suede Shoes



**WT10** ▶ A Perfect Ten  
Coordinates with Color Blox A1117 I See the Moon

# Color Palette

## Brights – Gloss Only

(Available only in 4 x 8)



**WT11** ▶ Eleventh Hour



**WT19** ▶ 19th Hole



**WT13** ▶ Lucky Thirteen



**WT14** ▶ Carbon-14



**WT20** ▶ 20/20 Vision



**WT16** ▶ Sixteen Candles

## Listellos



**WTL1/.1.512** ▶ White/Black



**WTL2/.1.512** ▶ Brown/Cream



**WTL3/.1.512** ▶ Gray/Aqua



**WTL4/.1.512** ▶ Red/Maroon



**WTL5/.1.512** ▶ Yellow/Green



**WTL6/.1.512** ▶ Blue/Aqua

# Specifications



## Sizes (shown in One of a Kind)



8 x 8



4 x 8



4 x 12

## Sizes & Finishes

### Field Tile

Nominal (in)	Actual (in)	Thickness (in)
4 x 8	3-15/16 x 7-7/8	1/4
4 x 12	3-15/16 x 11-13/16	1/4
8 x 8*	7-7/8 x 7-7/8	1/4

Crossville recommends a minimum 1/16 inch grout joint.

\* 8 x 8 available in WT01, WT02 and WT03 only.

### Coordinating Trim

Nominal (in)	Actual (in)	Thickness (in)
4 x 8 Cove Base*	3-15/16 x 7-7/8	1/4
4 x 8 Cove Base (left & right)*	3-15/16 x 7-7/8	1/4
2 x 8 Single Bullnose	2-3/16 x 7-7/8	1/4
2 x 2 Bullnose Corners	2-3/16 x 2-3/16	1/4
4 x 12 Single Bullnose	3-15/16 x 11-13/16	1/4
4 x 4 Bullnose Corners	3-15/16 x 3-15/16	1/4
1/2 x 12 Listello	7/16 x 11-11/16	1/4



4 x 8 Cove Base\*



4 x 8 Cove Base Corner (left & right)\*



2 x 8 Single Bullnose



2 x 2 Bullnose Corner



4 x 12 Single Bullnose



4 x 4 Bullnose Corner

\* Cove Base has an unglazed flat top

## Shade & Texture Index

Color by Numbers has a shade variation of V1.

V1	V2	V3	V4	<b>V1 Uniform appearance</b>
				V2 Slight Variation
				V3 Moderate Variation
				V4 Substantial Variation

This tile product is produced with a V1 variation. Differences among pieces from the same production run are minimal. Inspect the product upon delivery and for best results, blend tile from several cartons during installation.

## Color, Finishes and Sizes Chart

Color	Finish		4 x 8	4 x 12	8 x 8	4 x 8 Cove Base & Corners	2 x 8 Single Bullnose & Corners	4 x 12 Single Bullnose & Corners
	Gloss	Satin						
WT01	✓	✓	✓	✓	✓	✓	✓	✓
WT02	✓	✓	✓	✓	✓	✓	✓	✓
WT03	✓	✓	✓	✓	✓	✓	✓	✓
WT06	✓	✓	✓	✓		✓	✓	✓
WT07	✓	✓	✓	✓		✓	✓	✓
WT08	✓	✓	✓	✓		✓	✓	✓
WT09	✓	✓	✓	✓		✓	✓	✓
WT10	✓	✓	✓	✓		✓	✓	✓
WT17	✓	✓	✓	✓		✓	✓	✓
WT18	✓	✓	✓	✓		✓	✓	✓
WT11	✓		✓					
WT13	✓		✓					
WT14	✓		✓					
WT16	✓		✓					
WT19	✓		✓					
WT20	✓		✓					

Information listed here is subject to change. Please refer to [CrossvilleInc.com](http://CrossvilleInc.com) for the latest, most accurate information.



Be Inspired



WT14 ▶ Carbon-14 4 x 8 Gloss  
WT01 ▶ One of a Kind 4 x 8 Gloss

## Environmentally Conscious

Color by Numbers contains a minimum of 4% pre-consumer recycled content and is certified by Third Party Certification Systems. For more information, visit [CrossvilleInc.com/green](http://CrossvilleInc.com/green).

## Recommended Use

Color by Numbers tile is recommended for interior vertical surfaces in wet or dry applications. See [CrossvilleInc.com](http://CrossvilleInc.com) for detailed installation instructions.

## Care and Maintenance

Regular cleaning is the best way to keep Color By Numbers tile looking good for years to come. Use clean, hot water (combined with a non-abrasive household cleaner, if needed). Rinse thoroughly and dry with a soft cloth to prevent spots. No waxes or sealers are need. More information regarding the care and maintenance of Crossville® products is available at [CrossvilleInc.com](http://CrossvilleInc.com).

## Our Warranty

Crossville Inc. guarantees that its products will meet or exceed the performance specifications outlined in ANSI A137.1- 2012 and in the performance data section of the Crossville, Inc. general product catalog. For complete details check our website at [CrossvilleInc.com](http://CrossvilleInc.com).

## Hydrotect

Our porcelain tiles are available with Hydrotect. Crossville's revolutionary invisible coating harnesses the power of light, water, and oxygen to create the best defense against dirt and pollution. Whether indoors or out, floors and walls stay cleaner, providing a superior experience in any space. For complete details check our website at [CrossvilleInc.com](http://CrossvilleInc.com).



Product featured in photo above:  
**WT06** ▶ Sixth Sense 4 x 12 Satin  
**Laminam by Crossville** ▶ Kauri\_Grigio

Cover:  
**WT02** ▶ Tea For Two 4 x 8 Gloss  
**WTL1/.1512** ▶ White/Black 1/2 x 12 Listello



## Trade Organizations



## Environmentally Aware

