

TARAFLEX® SPORTS FLOORING

gerflorusa.com
gerflorcanada.com



Gerflor
theflooringgroup



Contact us at
info@gerflorusa.com

50

**million square feet
of Taraflex®**

installed in the USA for sports and
multi-use activities



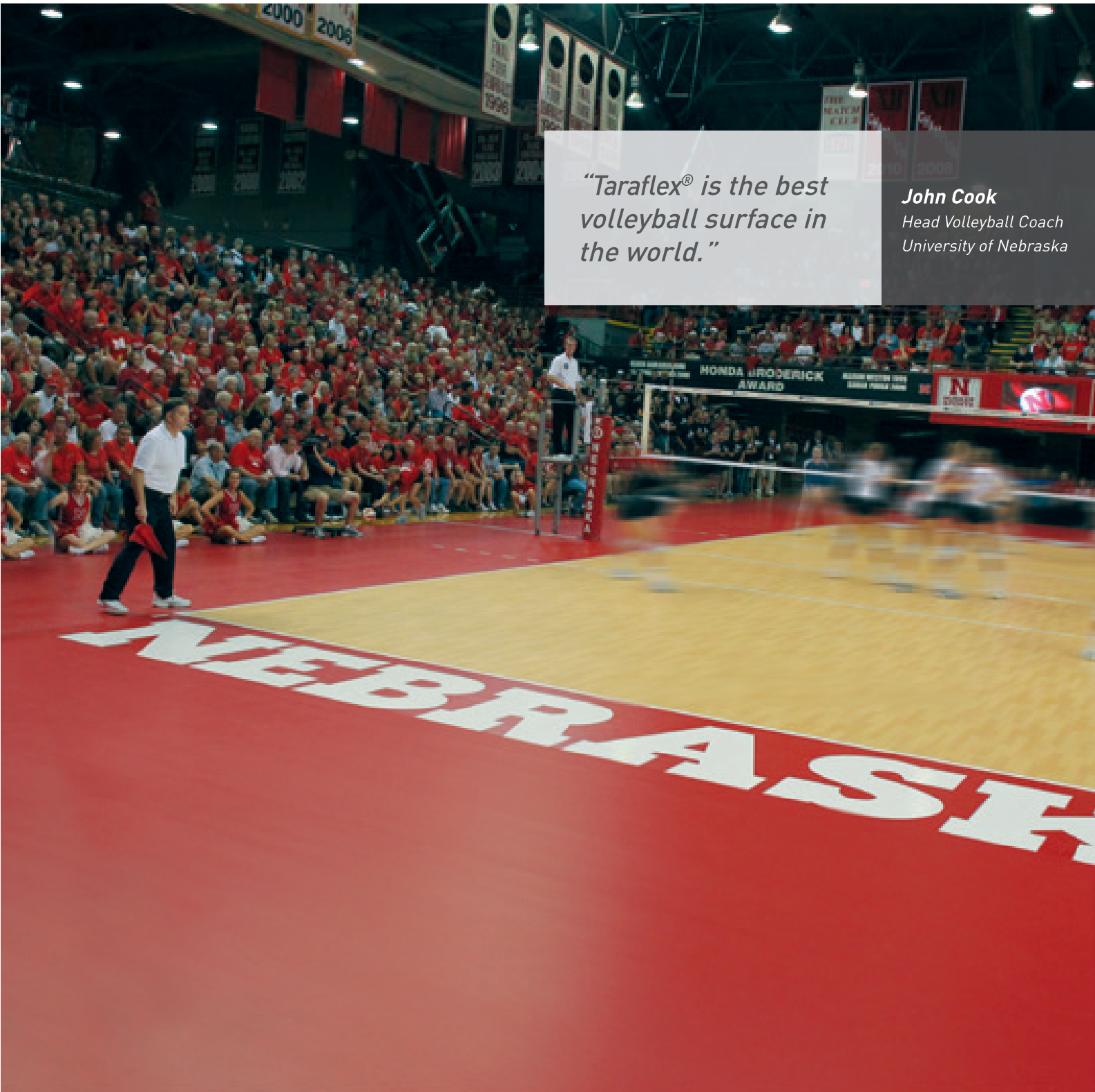
5

**million children
and athletes**

play safely on Taraflex® Sports
Flooring everyday



largest sports flooring inventory in the USA
stocked in Chicago



*"Taraflex® is the best
volleyball surface in
the world."*

John Cook
Head Volleyball Coach
University of Nebraska

70,000 **gymnasiums**
have been fitted with
Taraflex® Sports Flooring

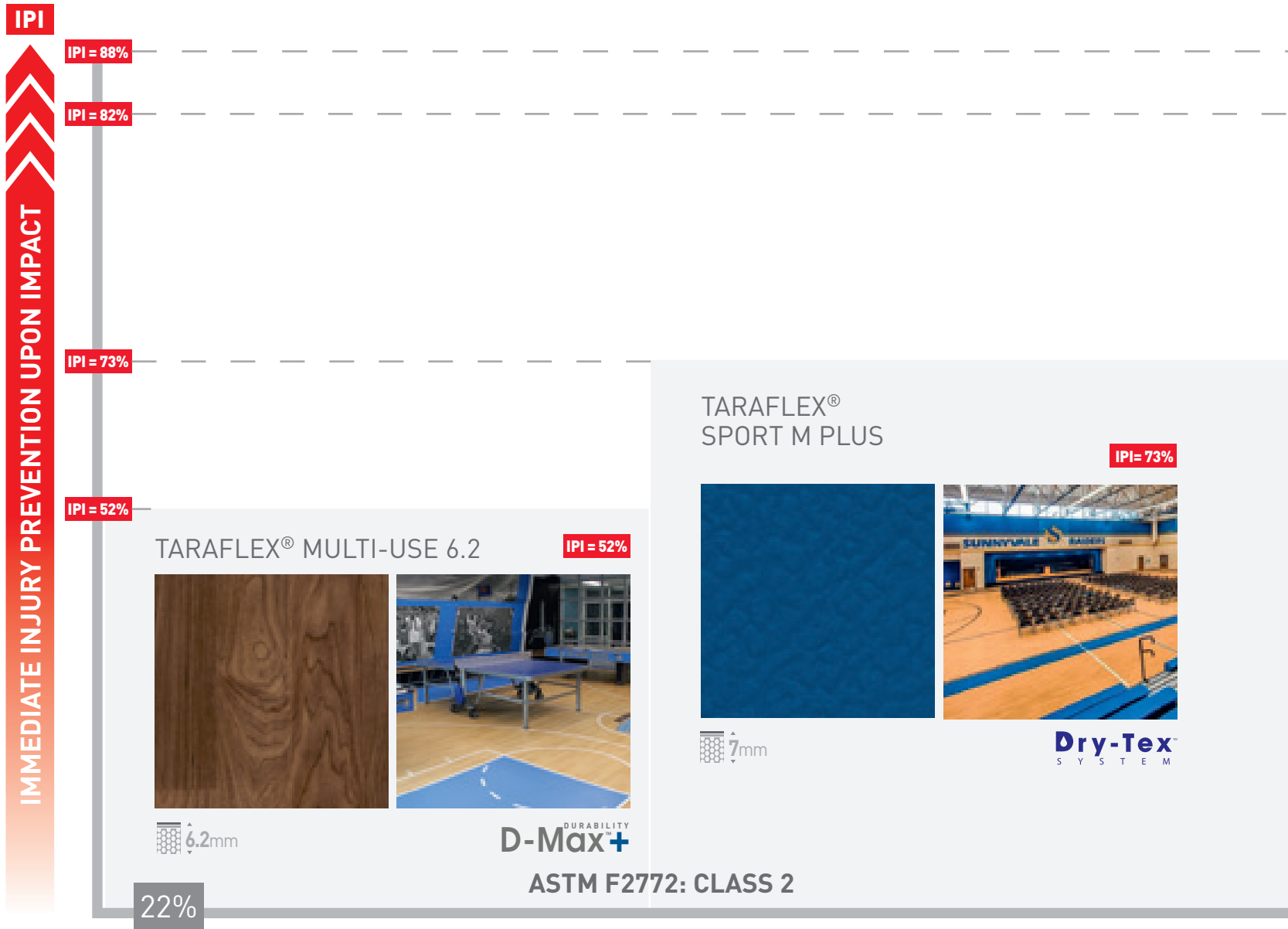
more than 50 **sports
specialists** 
at your service

 **more than 3,000** **top level matches**
are played on Taraflex® Sports
Flooring every year









ALL TARAFLEX® SPORTS & MULTI-USE FLOORING COMPLY WITH THE ASTM F2772 SPORTS FLOORING STANDARD

ASTM F2772: THE AMERICAN SPORTS FLOORING SAFETY STANDARD is the only material testing method recognized in the United States for indoor sports flooring. It establishes clear criteria and minimum requirements for safe sports floors and classifies floors into five performance levels (Class 1 to Class 5) based on the shock absorption level.

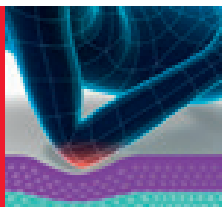
Request a certificate of compliance from your sports flooring provider.
If it doesn't comply with the ASTM F2772 standard it's not a safe sports floor!



APPLICATIONS

MULTI-USE	TARAFLEX® MULTI-USE 6.2		<div><div></div><div></div><div></div><div></div><div></div><div></div></div>	TARAFLEX® SPORT M PLUS		<div><div></div><div></div><div></div><div></div><div></div><div></div></div>
MULTI-SPORT GYMNASIUMS			<div><div></div><div></div><div></div><div></div><div></div><div></div></div>			<div><div></div><div></div><div></div><div></div><div></div><div></div></div>
COLLEGES, SPORT COMPETITIONS & CLUBS			<div><div></div><div></div><div></div><div></div><div></div><div></div></div>			<div><div></div><div></div><div></div><div></div><div></div><div></div></div>
TRAINING CAMPS			<div><div></div><div></div><div></div><div></div><div></div><div></div></div>			<div><div></div><div></div><div></div><div></div><div></div><div></div></div>

COMFORT is a mechanical property of the sports floor that provides immediate protection when athletes fall, slide or dive on the floor. As the **Impact Protection Index (IPI)** of a floor increases, so does protection and injury prevention for athletes. And that means reduced pain, fewer bruises and less bone trauma upon impact.

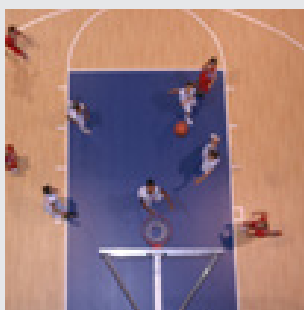
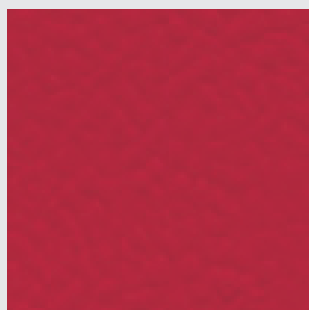


IPI= IMPACT PROTECTION INDEX

> 80%	high protection
50% to 80%	medium protection
≤ 50%	low protection

**TARAFLEX®
SPORT M PERFORMANCE**

IPI = 82%



9mm

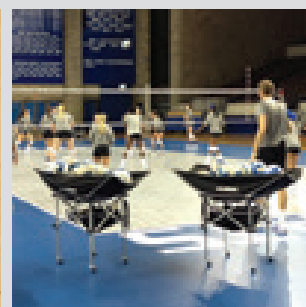
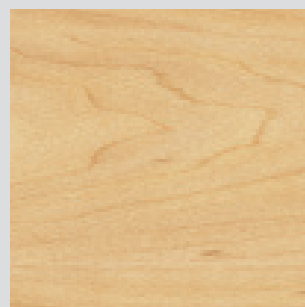
**Dry-Tex™
SYSTEM**

ASTM F2772: CLASS 3

34%

TARAFLEX® SPORT M COMFORT

IPI = 88%



12mm

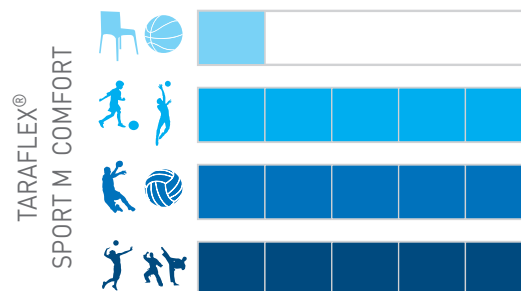
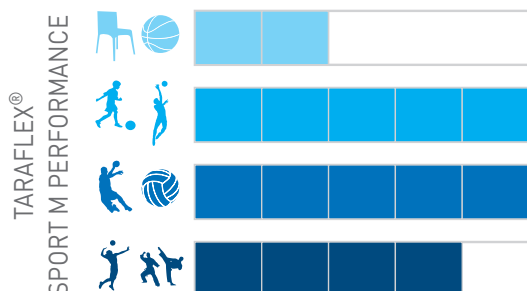
CXP^{COMFORT} HD

ASTM F2772: CLASS 4

46%

57%

LONG TERM INJURY PREVENTION - ASTM F2772 % OF SHOCK ABSORPTION LEVEL



TARAFLEX® SPORTS FLOORING

A WORLD OF COLORS AND DESIGNS



6381 - Maple Design



6430 - Blue



6557 - Forest



6445 - Lagoon



6570 - Mint Green



2404 - London Light Blue



6559 - Spring



6830 - Black



6211 - Gold

Online 3D court designer

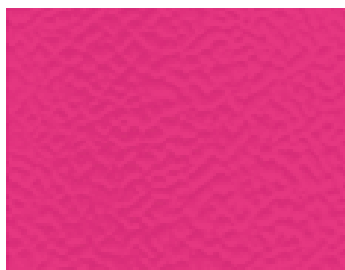
Select your school, team, facility or favorite sports floor colors and visualize them in the Taraflex® Sports Flooring 3D court designer available at gerflorusa.com



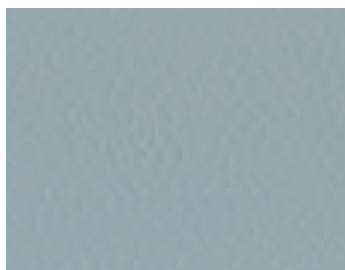
6180 - Red



6038 - Terracotta



6159 - Pink



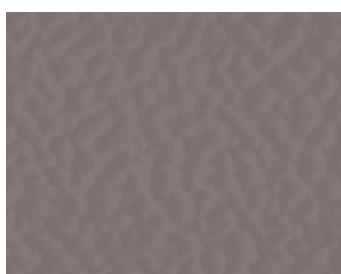
6758 - Silver Gray



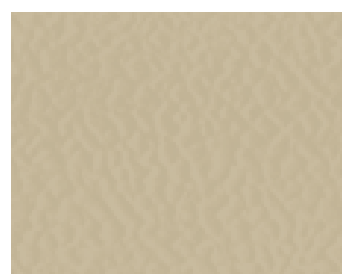
6375 - Oak Design



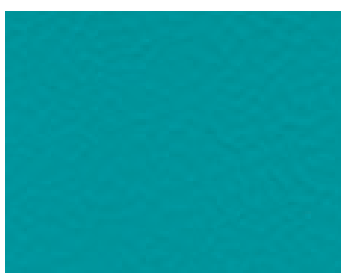
6873 - Anthracite



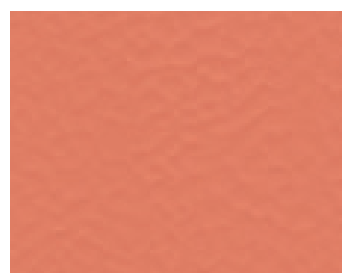
3764 - Taupe



6347 - Beige



6431 - Teal



6146 - Coral

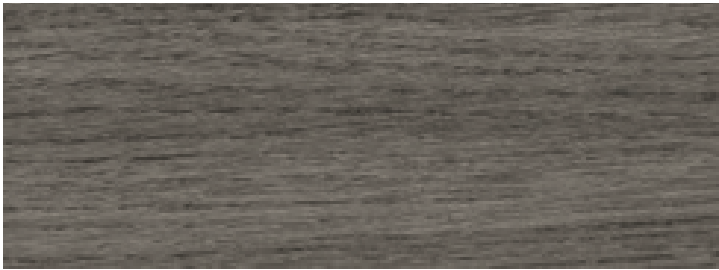
FIVB
Official FIVB colors

TARAFLEX® MULTI-USE 6.2

ENHANCE YOUR SPACE WITH NEW WOOD DESIGNS



8068 - Wood Chocolate



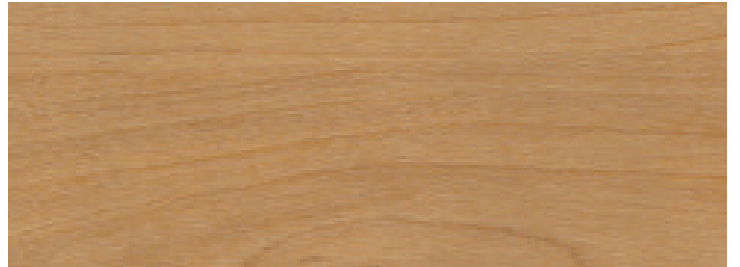
8840 - Wood Black



6375 - Oak Design



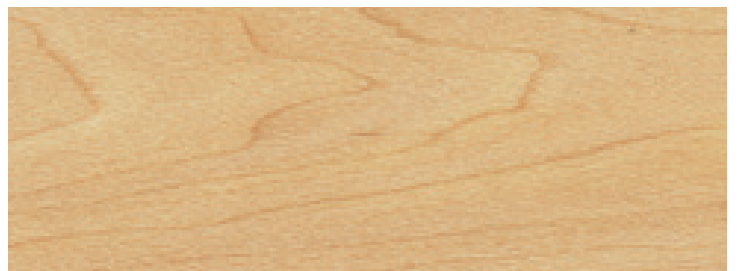
3708 - Wood Grey



4331 - Wood Natural



4453 - Wood Blue



6381 - Maple Design



6445 - Lagoon



6430 - Blue



6180 - Red

TARAFLEX®: AN ECO-RESPONSIBLE PLAYER

1

BEST INDOOR AIR QUALITY

- Floorscore certified
- Very low VOC emissions—less than 100 ug/m³
- Allergen Free & Sanosol Antimicrobial treatment



2

PRODUCT DECLARATION & RECYCLABILITY

- Made from 30% recycled content
- 100% manufacturing waste recycled
- Complies with REACH regulations



3

BUILDING PERFORMANCE OPTIMIZATION

- Easy to maintain—No wax for life
- Life expectancy of more than 20 years
- Over 80% reduction of water and detergent use for maintenance



4

CONTRIBUTES TO LEED

- Oak Park Community Center, Sacramento, CA
- The first LEED Gold certified building built for the City of Sacramento
- Specified product: Gerflor Taraflex® Sport M Plus Maple 6381



SAVE TIME AND MONEY

PLAN AHEAD AND SPECIFY TARAFLEX® WITH DRY-TEX™ SYSTEM

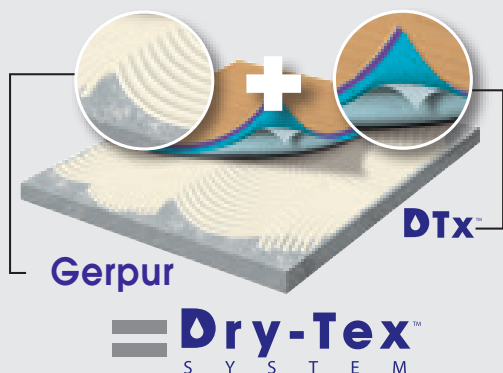


NEW CENTURY JOHNSON COUNTY PARKS AND RECREATION

The first LEED Gold community center in the Kansas City Metro area
More than 45,000 square feet of Taraflex® Sport M Plus with Dry-Tex™ System

installed **45** days after the slab was poured

Dry-Tex
SYSTEM



► TARAFLEX® DRY-TEX™ SYSTEM

Prevent delays and additional costs when faced with the most common issue in flooring installation—high moisture levels.

Available on Taraflex® Sport M Plus and Taraflex® Sport M Performance, the Dry-Tex™ System is the only moisture mitigation system integrated in the backing of the sports floor and allowing a full-spread adhesive installation method recommended for multi-purpose gymnasiums with tables, chairs and rolling loads.

PROVEN METHOD:

- More than 2.5 million square feet installed in the US
- 10-year moisture resistance warranty

- **HIGHEST moisture tolerance of any sports floor : 98% RH (15 lbs)**
- **Up to 70% cost savings** compared to other third party mitigation systems
- **No risk of mold** with our full-spread adhesive installation method

TARAFLEX® VOLLEYBALL COURTS

A DIFFERENCE YOU CAN FEEL



► SINCE 2005, THE FIVB SELECTED TARAFLEX® VOLLEYBALL COURTS EXCLUSIVELY FOR ALL THEIR OFFICIAL COMPETITION EVENTS WORLDWIDE.

Extended by FIVB through 2016



2013 World Grand Champions Cup

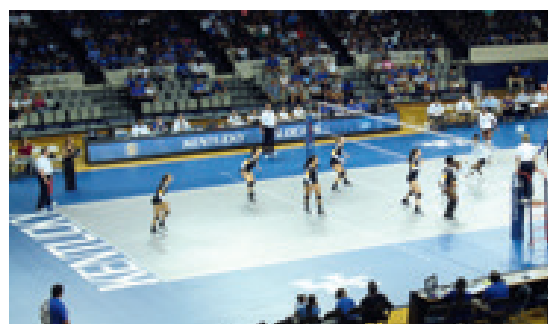
TARAFLEX® VOLLEYBALL COURTS ARE CUSTOMIZED FOR EACH FACILITY AND TEAM'S UNIQUE NEEDS

Taraflex® offers the best sports floor properties for elite volleyball players rapid pivoting, sliding, diving and jumping:

- Drastically reduces friction burns
- Superior shock absorption
- Safe and consistent floor properties throughout the surface—no tile gaps

Players are protected and know exactly how the floor will react at all times.

PORTABLE COURTS



University of Kentucky Memorial Coliseum

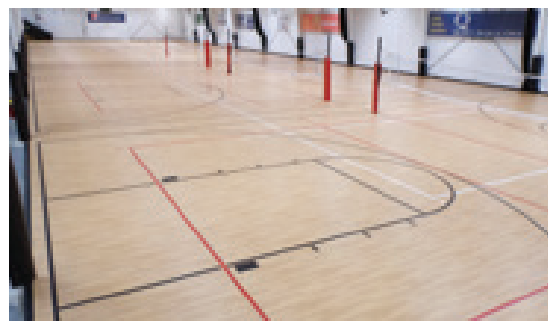
"The first time I played on Taraflex® was at the Olympics. It's the best volleyball surface in the world. Every player and child deserves to play on Taraflex®."

A handwritten signature in black ink that reads "Caren Kemner" followed by "HOF 13" in a smaller script.

Caren Kemner

Owner of Riverfront Athletic Association
Three-time Olympian and 1992 Olympic Medalist
2013 Volleyball Hall of Fame Inductee
1992 FIVB Best Volleyball Player in the World

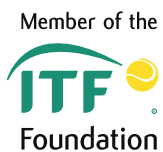
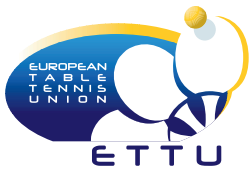
PERMANENT INSTALLATIONS



Riverfront Athletic Association, Quincy, Illinois







TARAFLEX®



Gerflor has supplied
all volleyball floors for
the last Summer Olympic
Games—from Montreal
1976 to London 2012—
through an agreement
with FIVB:

Montreal

Moscow

Los Angeles

Seoul

Barcelona

Atlanta

Sydney

Beijing

London





GERFLOR USA
877.437.3567
info@gerflorusa.com



GERFLOR CANADA
438.333.0752
gerflorcanada@gerflor.com

gerflorusa.com
gerflorcanada.com

Made in USA. January 2014. I Imagine.
RC Lyon B 726 580 152 - jpe - Photo credit S. Pillaud



Committed to Sustainable Development



Gerflor[®]
theflooringroup