

# RECESSED DRYWALL MOUNT INSTALLATION INSTRUCTIONS FOR SLIP-THROUGH BRACKET (DB)

## PART LIST

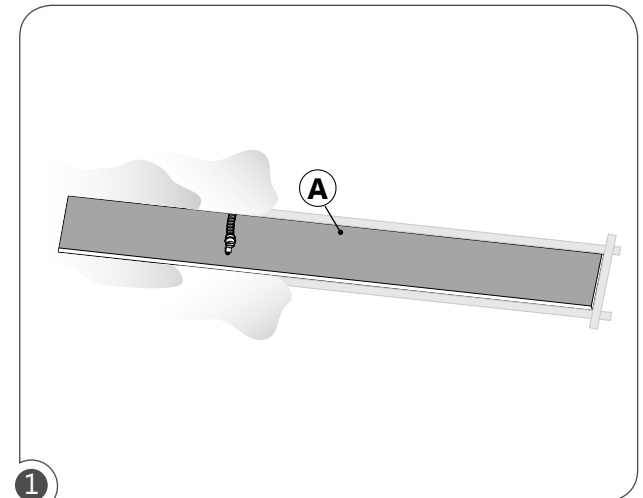
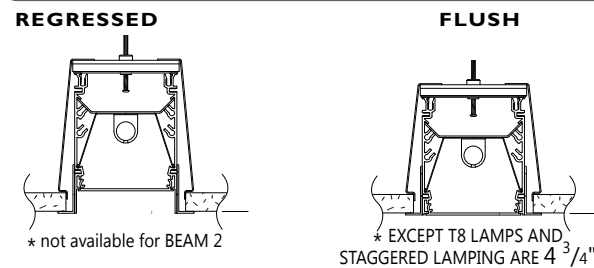
A Opening	I Wire nuts
B Optics	J Slip-through bracket
C Lamps (by others)	K Retaining bolt
D Reflectors	L Fixture 2
E BX cable connector	M Joining brackets
F Power plate	N Treaded rod
G BX cable wires (by others)	O Quick-wire connectors
H Fixture 1	

## DIMENSIONS (4' FIXTURES)

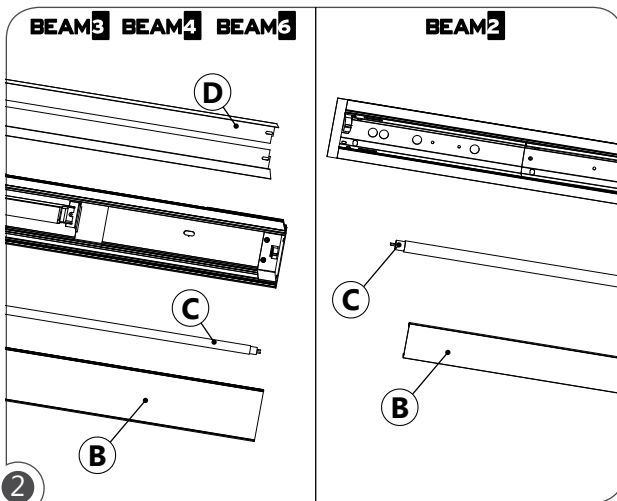
PRODUCT	FIXTURE WIDTH WITH FLANGES	FIXTURE LENGTH		HOLE WIDTH ALL LAMPS	HOLE LENGTH	
		T5/T5HO	T8		T5/T5HO	T8
Beam 2	2 1/4"	47 9/16"	49 1/4"	2 13/16"	46 7/8"	48 9/16"
Beam 3	3 13/32"	47 9/16"	49 1/4"	3 31/32"	46 7/8"	48 9/16"
Beam 4	4 5/32"	47 9/16"	49 1/4"	4 23/32"	46 7/8"	48 9/16"
Beam 6	5 1/32"	47 9/16"	49 1/4"	5 19/32"	46 7/8"	48 9/16"

\* for longer fixture lengths please consult shop drawing.

## SECTION VIEW



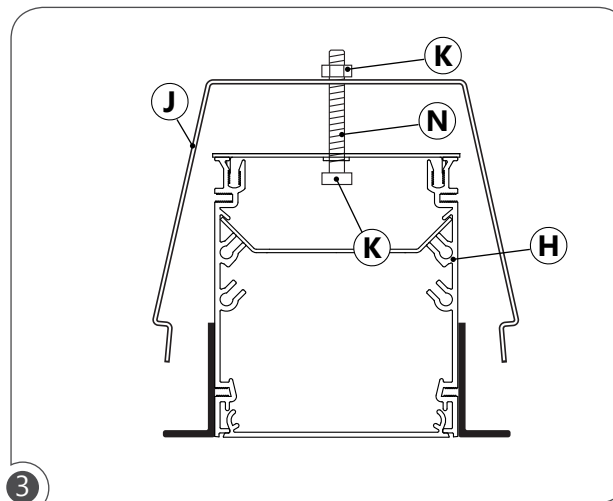
1 Ensure that the power to the fixture's circuit is turned off. Make an opening (A) in drywall according to the diagram and dimensions chart on the left. Tape and finish around the edges.



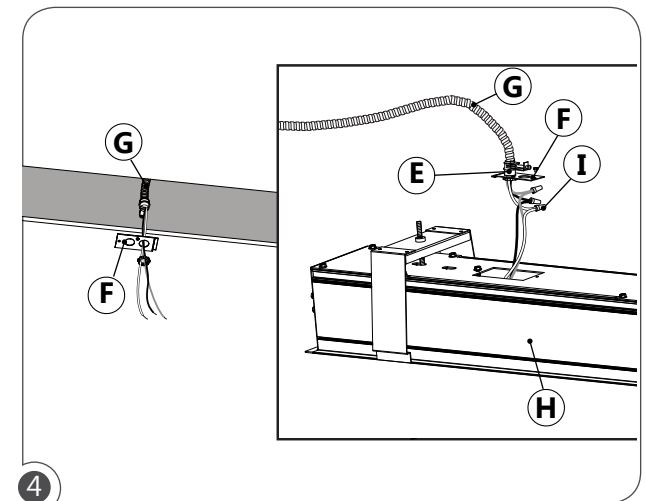
**BEAM3 BEAM4 BEAM6** Remove optics (B) to gain access to lamps (C). Remove lamps (C) if installed. Unscrew reflector (D) to get access to the mounting holes.

**BEAM2** Remove optics (B) to gain access to lamps (C). Remove lamps (C) if installed.

FILENAME:OLD-BR-BMR-BBR-B6R.DB,INST October 17, 2013

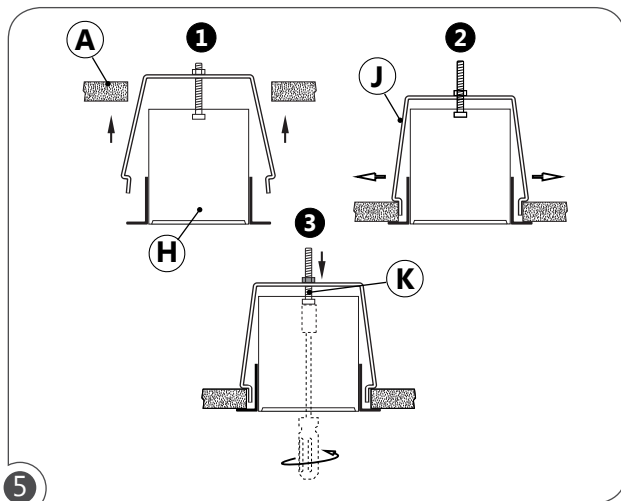


3 Place the split through bracket arm (J) on both sides of fixture (H). Insert the treaded rod (N) through the hole in the fixture (H) and place the two retaining bolts on the treaded rod (N), do not tighten bolts (K) until fixture (H) is installed into cut hole.

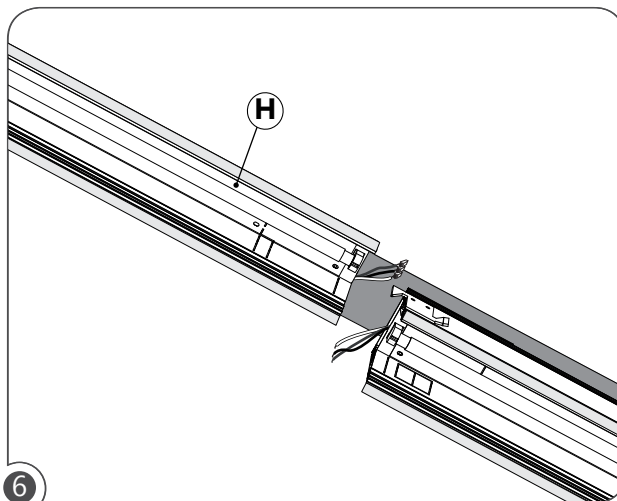


4 Install BX cable connector (E) through the power plate (F). Connect BX cable (G) wires to fixture wires (H) using provided wire nuts (I). Push connected wires into fixture. Fasten power plate (F) to fixture (H).

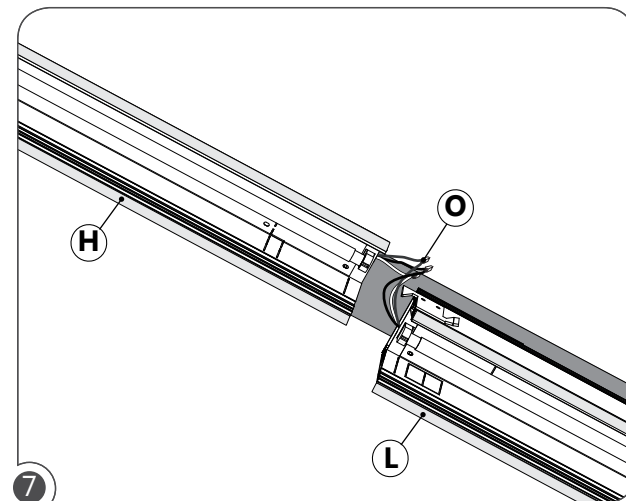
# **RECESSED DRYWALL MOUNT - END-TO-END LAMPING** **INSTALLATION INSTRUCTIONS FOR SLIP-THROUGH BRACKET (DB)**



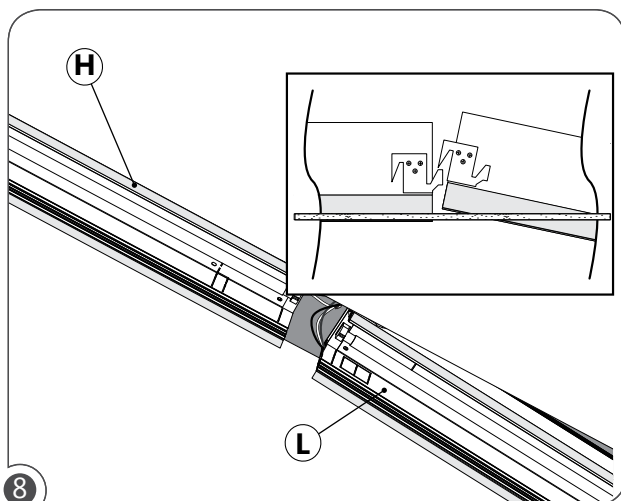
- (1) Push fixture (H) through hole in drywall (A)
- (2) Bracket arms (J) will snap out
- (3) Tighten bolts (K) until fixture is tight to ceiling.



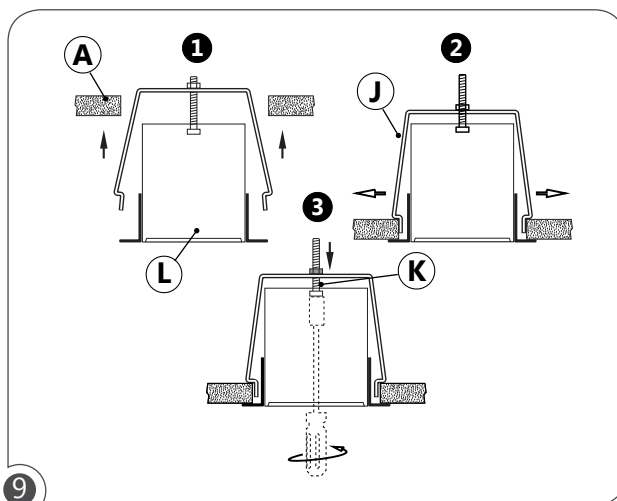
**CONTINUOUS ROW:** Follow steps 1 to 5 for the first fixture (H) in the row.



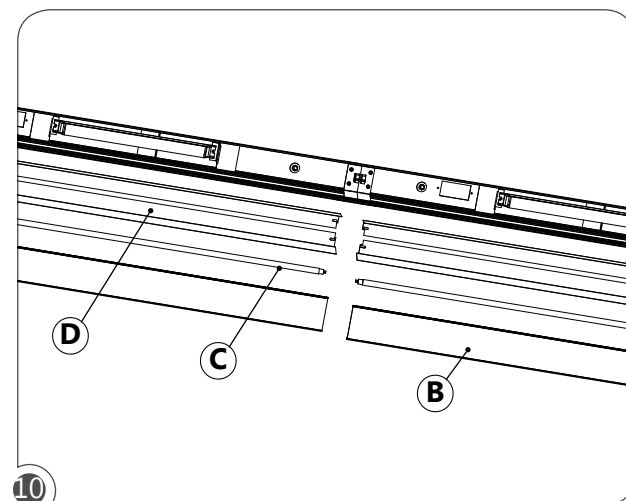
Make electrical connection between the first fixture (H) and the next fixture (L) using quick-wire connectors (O).



Slide fixtures (H) and (L) together and hook the brackets (M) together to join fixtures.

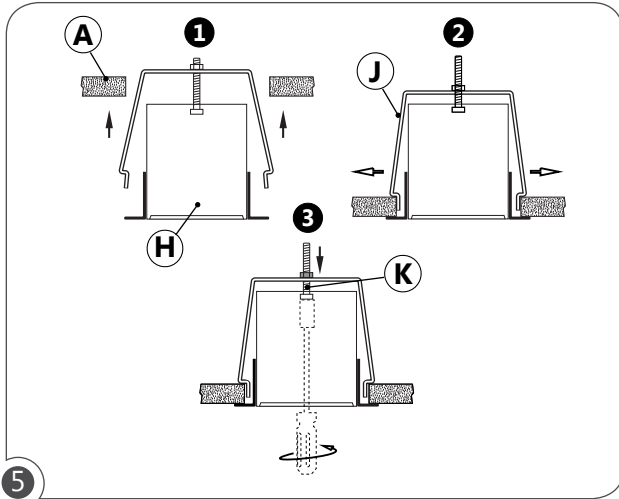


- (1) Push fixture (L) through hole in drywall (A)
- (2) Bracket arms (J) will snap out
- (3) Tighten bolts (K) until fixture is tight to ceiling.

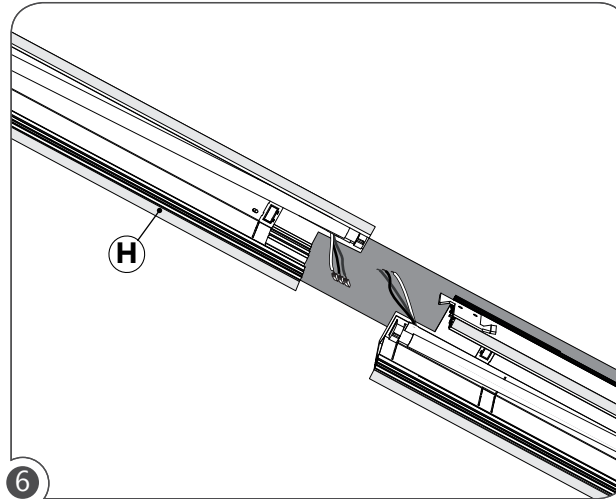


Re-install the reflectors (D), lamps (C) and optics (B).

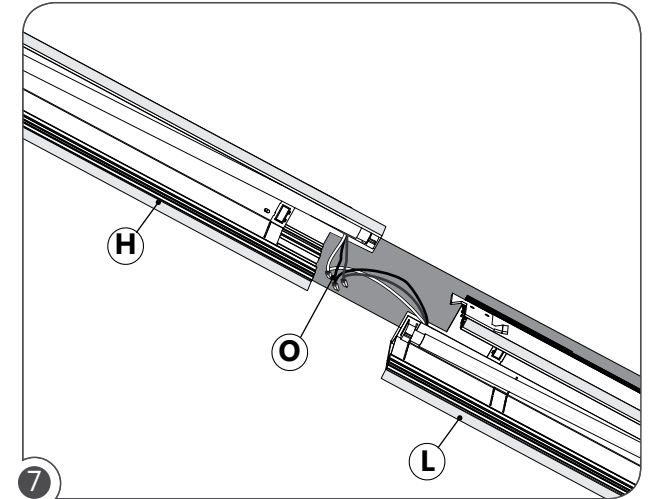
# RECESSED DRYWALL MOUNT - STAGGERD LAMPING INSTALLATION INSTRUCTIONS FOR SLIP-THROUGH BRACKET (DB)



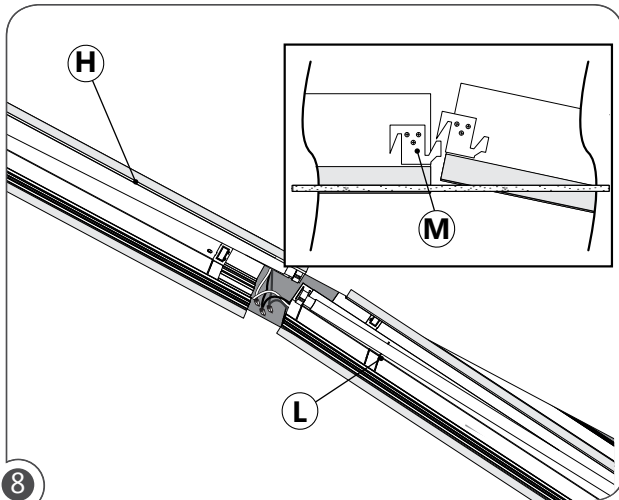
- (1) Push fixture (H) through hole in drywall (A)  
(2) Bracket arms (J) will snap out  
(3) Tighten bolts (K) until fixture is tight to ceiling.



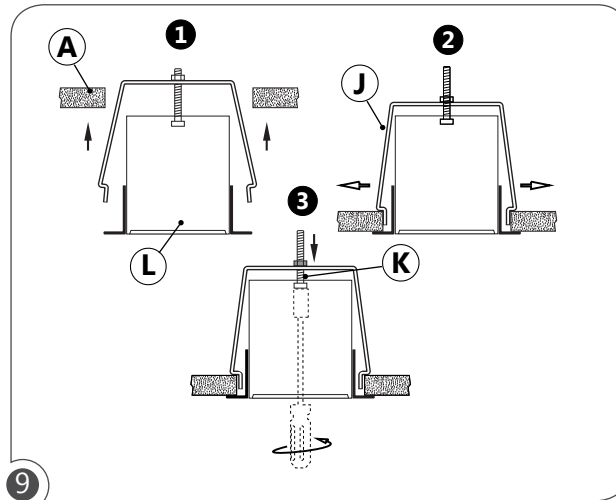
**CONTINUOUS ROW:** Follow steps 1 to 5 for the first fixture (H) in the row.



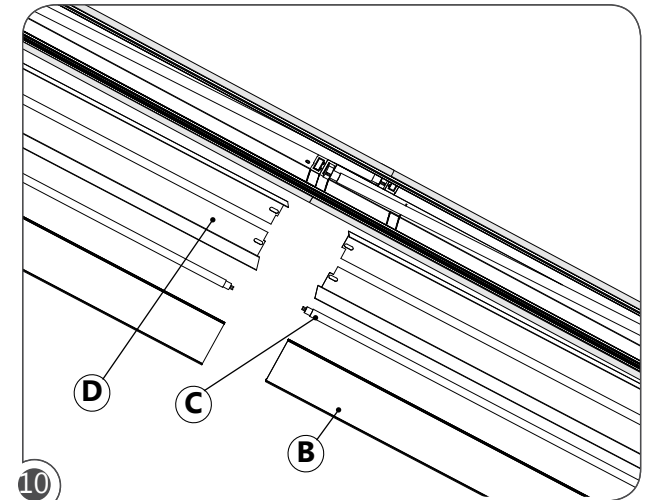
Make electrical connection between the first fixture (H) and the next fixture (L) using quick-wire connectors (O).



Slide fixtures (H) and (L) together and hook the brackets (M) together to join fixtures.



- (1) Push fixture (L) through hole in drywall (A)  
(2) Bracket arms (J) will snap out  
(3) Tighten bolts (K) until fixture is tight to ceiling.



Re-install the reflectors (D), lamps (C) and optics (B).